

SILVERDALE SIXTH FORM PROSPECTUS



CONTENTS

Welcome to Silverdale Sixth Form	3
Consistently outstanding results	4
Student life	5
Supporting aspiration	6
Destinations	7
Support and wellbeing	8
Financial assistance	9
Courses	10
Apply to Silverdale Sixth Form	11

.....

Students in the sixth form support each other and display extremely positive attitudes to learning.

Ofsted, October 2022

WELCOME TO SILVERDALE SIXTH FORM



Jo Charlesworth,
Deputy Head
of Sixth Form



Jo Fisher,
Deputy Head
of Sixth Form

Selecting a Sixth Form is one of the most important decisions that you will make after your GCSEs. Here at Silverdale Sixth Form our students thrive and flourish, both academically and personally, in a welcoming and supportive learning community. Ofsted rated Silverdale Sixth Form as 'Outstanding' in the most recent inspection.

Silverdale Sixth Form has a track record of high achievement and success, centred on a close relationship between teachers and students. Our students enjoy learning with highly experienced members of staff across a wide range of subjects. The Sixth Form staff team works with students to check on their progress and wellbeing, with assistance and support offered when it is required.

I am proud to be Head of Silverdale Sixth Form, a vibrant and exciting place to learn, develop and grow as an individual. I thank you for your interest in joining us and hope to welcome you into our Sixth Form in the future.

John Naylor,
Head of Silverdale Sixth Form



CONSISTENTLY OUTSTANDING RESULTS

Silverdale Sixth Form is consistently one of the most successful in Sheffield. We pride ourselves on the exceptionally high levels of attainment and progress achieved by our students.

The close academic and pastoral relationship between students and staff results in sixth formers fulfilling their potential and beyond, year after year. This opens doors for them to pursue their chosen career path.

11%
of all grades
were A*

38.9%
of all grades
were A*-A

69.6%
of all grades
were A*-B

83.3%
of all grades
were A*-C

93%
gained a place
at their first
choice university

58%
of university
places were at
Russell Group
universities

B
average
grade

STUDENT LIFE



Friendly and welcoming

Silverdale Sixth Form is a welcoming community. In the words of one of our students: "After a few weeks you just forgot who was from which school originally because it's such a friendly place".

Enrichment opportunities

At Silverdale Sixth Form we passionately believe that a post-16 education must include a wide variety of enrichment options to enhance our students' experience in class, develop lifelong skills and provide the essential qualities that set our students apart when applying for university, apprenticeships or employment.

Enrichment opportunities at Silverdale Sixth Form include:

- Work experience and hospital volunteering.
- FutureLearn MOOCs (massive open online courses) giving access to prestigious universities and professionals worldwide; IRIS Research projects; university lectures and other super-curricular activities.
- Extended Project Qualification (EPQ), Level 3 Core Maths Qualification.
- Debating Society and Culture Club to develop discussion and debating skills.
- Home language support for bilingual or multilingual students wishing to take GCSE or A-level exams in a number of languages, such as Urdu, Persian, Japanese, Polish, Tamil, Mandarin Chinese.

Leadership skills are developed through active involvement in events such as school open evenings and events, becoming a paid lunchtime supervisor or providing positive role models for students by acting as paired reading mentors or subject ambassadors.

Beyond the classroom

As well as our enrichment programme, we offer numerous extracurricular activities, opportunities, trips and visits. Sixth Form student leaders (the 'Head Team') have the chance to make a difference by leading activities and events including Year 13 Prom - a highlight of their time at Silverdale Sixth Form.



SUPPORTING ASPIRATION

At Silverdale Sixth Form we support academic and individual aspiration for all students.

We have strong associations with local universities. In the summer term, all Year 12 students undertake a full day at a local university, giving them the chance to experience university life and undertake workshops in preparation for their applications. We work in partnership with the University of Sheffield through their Access to Sheffield outreach programme and also the Universities of Newcastle and Leeds to support their widening participation programmes. This provides our students with a wonderful range of experiences in a range of subjects including dentistry, medicine, engineering, law and humanities.

We strongly believe that all students, irrespective of social or economic background, should have equal access to the opportunities available, including residential courses with major employers and mentoring from Year 12 until university graduation. We partner with a range of organisations including the Social Mobility Foundation, the Sutton Trust and Villiers Park Educational Trust to ensure that this happens.

We work extremely hard to ensure students start thinking about their choices from the time they join us. This process starts with discussions in tutor groups and supported by our careers specialist advisor and visiting speakers who inform students about student finance, gap years, career paths, degree apprenticeships, CVs and interviews.

Focused support is given to potential applicants to Oxbridge and to competitive courses such as medicine and law. We run

Moving from another school was daunting but teachers believed in me from day one and were always there for support.

Former student

Oxbridge and Russell Group sessions within school as well as attending the Sheffield Oxbridge Conference each year. The opportunities we offer have helped our students to enhance their skills and knowledge in a chosen subject and extend their higher education and career goals.

In Year 13, their tutor will help them to manage the transition to university, higher level degree apprenticeships or the world of work. They help students to complete their applications and also write references using the academic references provided by subject teachers as guidance. We then provide interview practice should students require it.

Our support continues during results day, and beyond if necessary.

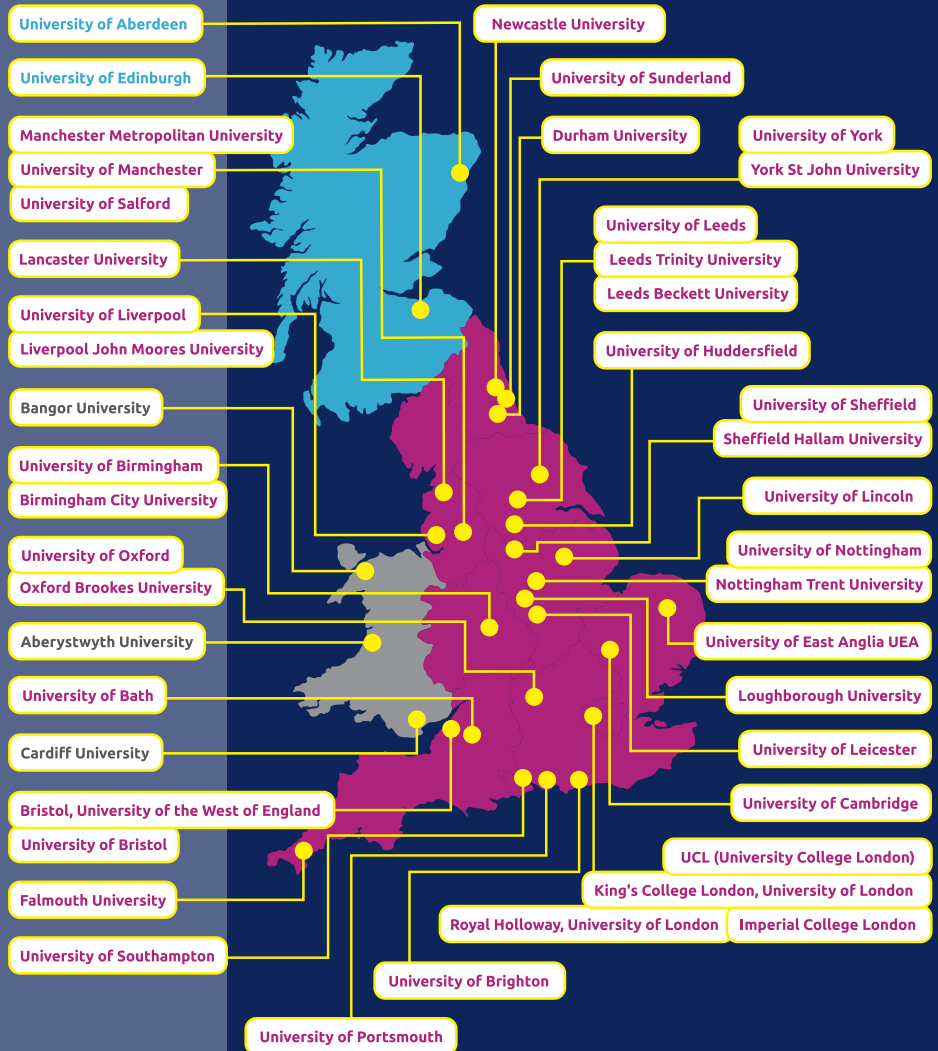


DESTINATIONS



I got to study at my first choice course at Manchester because of the fantastic support and care from the sixth form team.

Former student



SUPPORT AND WELLBEING

Our team of committed staff ensures that students are well supported throughout their time at Silverdale Sixth Form.

The team includes form tutors, who provide one-to-one mentoring and skilled teaching staff who work with students to developing study skills and knowledge of personal finance, health and relationships, and post-18 career options over and above curricular studies. Our experienced pastoral team support academic mentoring and progress monitoring. Where additional academic or pastoral support might be beneficial, we will discuss the various options with students and their parents to help identify the most appropriate course of action.



Leaders' support for students in the sixth form continues after they leave Silverdale. For example students embarking on a gap year have offers of help available to assist them with university applications upon their return.

Ofsted, October 2022

Our Special Educational Needs and/or Disabilities (SEND) and Inclusion Teams work extremely hard to ensure that all students can access their education and feel included within our community. This includes access to mental health support from dedicated social, emotional and mental health support co-ordinators. At Silverdale Sixth Form we work in partnership with the school's two integrated resources to enable young adults with an EHCP (for example, those students who are deaf or with high functioning autism spectrum conditions) to access high quality post-16 education.



FINANCIAL ASSISTANCE



The 16 to 19 Bursary Fund is money from the government to provide for students who need financial help to stay in education.

There are two types of 16 to 19 bursary:

1. A discretionary bursary for young people on free school meals or with a household income below the threshold.

2. A vulnerable bursary for young people in one of the following groups:

- In care.
- Care leaver.
- Receiving Income Support or Universal Credit.
- Receiving Employment Support Allowance.
- Receiving Disability Living Allowance.

Students are advised to apply for the bursary at the start of term in September, as the funding is limited. Applications can be made throughout the year if their household circumstances change; however, it is not guaranteed there will be sufficient funds. Please note that funding is not backdated and commences from the point of the application being successful. Application is via an online form.

Further details are available at:

www.silverdale.chorustrust.org/sixthformfinancialsupport



COURSES



We offer a wide range of subjects* to study at Silverdale Sixth Form:

- Art and Design (Fine Art)
- Biology
- Chemistry
- Computer Science
- Drama and Theatre
- Economics
- English Language
- English Literature
- French
- Geography
- Health and Social Care
- History
- Maths
- Maths (Further)
- Media Studies
- Physical Education
- Physics
- Psychology
- Religious Studies
- Sociology
- Spanish

*Please note that all courses are subject to change, depending on the number of students who apply and the availability of teaching staff.

Option blocks

Our courses are arranged in option blocks. Usually, students will choose three subjects. However, students with a grade average of 7+ can opt to study four subjects. The option blocks can be found at:

www.silverdale.chorustrust.org/coursesinsixthform

FOR FULL DETAILS OF OUR SUBJECTS, VISIT:

www.silverdale.chorustrust.org/coursesinsixthform



APPLY TO SILVERDALE SIXTH FORM

Priority access

- Chorus Education Trust students: students who are predicted to meet the entry criteria and who attend a school within Chorus Education Trust will get priority over other students.
- Other criteria for priority treatment can apply (for example students in care and students facing exceptional circumstances, such as illness) and are detailed in Sheffield City Council's A Guide for Parents: Transfer to Secondary School guidance.

In the event of there being insufficient places for students from other schools, oversubscription criteria are stipulated in the Sheffield City Council's 'A Guide for Parents – Transfer to Secondary School' available at www.sheffield.gov.uk/schools-childcare/apply-school-place

Entry criteria

To qualify for a place at Silverdale Sixth Form, students must meet both criteria:

- 5 subjects at grades 4 to 9, including English and maths.
- Individual subject entry requirements as stipulated at www.silverdale.chorustrust.org/coursesinsixthform

If students do not meet the entry requirements for a course applied for, they will be offered alternatives. We cannot guarantee that a student will gain a place on their original course if they subsequently achieve the required grade in their GCSE. We operate a waiting list process once the maximum number for a course is reached.

21 November 2024
Silverdale Sixth Form open evening

1 December 2024
Apply online at:
www.sheffieldprogress.co.uk

31 January 2025
Application deadline

27/28 February 2025
Conditional offers of places made

14 March 2025
Offer acceptance deadline

June 2025
Year 12 induction day

21 August 2025
GCSE results day/enrolment
at Silverdale Sixth Form

September 2025
Start at Silverdale Sixth Form



SILVERDALE SIXTH FORM

Silverdale School
Bents Crescent
Sheffield S11 9QH



T 0114 236 9991

E sixthform@silverdale.chorustrust.org

W www.silverdalesixthform.org