



# Brand profile

# United. Innovative. Conscious.

Profilink is a brand of LINKIN, committed to providing high-quality aluminium and PVC systems for architectural applications.

With a rich history of more than 30 years and a strong focus on customer satisfaction, we have established ourselves as one of the oldest architectural brands in Europe.



## Mission

---

To deliver a great product experience for architectural solutions at scale.

## Vision

---

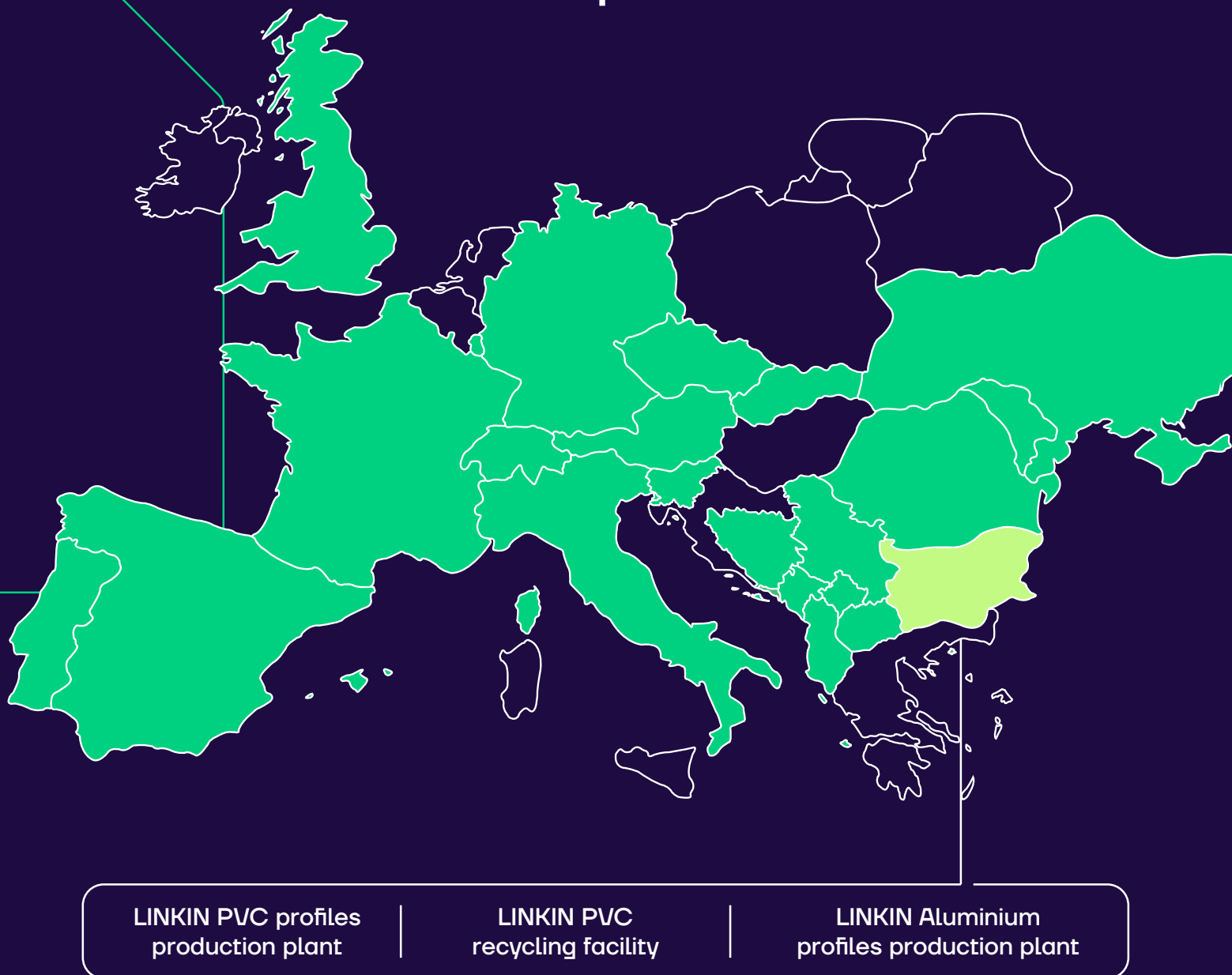
Creating the world's best products and services to deliver an exceptional user experience.

## Values

---

Insist on the highest standards  
We make reliable products that we are proud of Sustainable Development. We simplify through innovation

# Profilink markets & LINKIN production facilities



1992

Establishment of the company under the name Teolino Plast in Bulgaria.

1994

Construction of the first production base for the extrusion of PVC profiles for external roller shutters.

1996

Enlargement of the production base and capacity.

2004

Construction of a second production base. Start of the production of PVC profiles for doors and windows under Profilink brand

2007

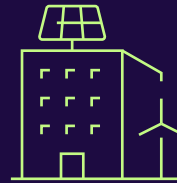
Construction of a third modern production base with an area of 120,000 m<sup>2</sup> and a significant increase in the production quantities.

# For a sustainable future



## Extending Product Life Cycles for a Greener Tomorrow

By prioritizing responsible resource management, we're reducing waste and minimizing our environmental footprint.



## Conscious Carbon Footprint Management

By adopting innovative strategies, we're actively working to reduce this impact and drive change.



## Smart Raw Material Use: Combating Climate Change

Our commitment to environmental stewardship drives us to find ways to minimize waste, promote recycling, and maximize the utility of resources



## LINKIN Recycle - Empowering Change Through Collaboration

Working alongside our clients, we collectively reduce our CO2 footprint by a remarkable 9,190,000 kg of CO2 emissions per year. This collaborative effort underlines our commitment to driving change at a significant scale.

2008

Penetration on foreign markets

2014

Establishment of Profilink Recycle (now LINKIN Recycle), a PVC recycling plant.

2020

Successful partnership with the largest German brands for the extrusion of architectural PVC systems. Investments in the latest generation of PVC extrusion lines, leading to an increase in production capacity.

2021

Start of the construction of the largest fully automated aluminium extrusion plant in the Balkans.

2024

Repositioning and rebranding of Profilink, now part of the LINKIN Industrial Group. Continuation as a product brand for aluminum and PVC architectural systems. Inauguration of an aluminum extrusion plant under the LINKIN brand.

# Our solutions

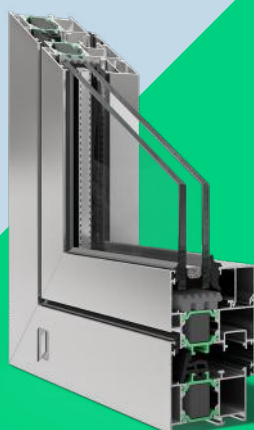
## Window and door solutions



Partner with Proflink to access a comprehensive range of high-quality aluminium and PVC solutions for your projects

### Proflink Orbis ●

The intelligent aluminium profiles construction of Proflink Orbis combined with an excellent thermal insulation are able to meet various customer needs and many different project requirements.



### Proflink Fluxis ■

Proflink Fluxis is a modern, mid-range thermal break window system. It is designed for standard residential and industrial construction, meeting high demands for design and functionality. Its development and production incorporate the latest technologies in the industry.



### Proflink Veltra ◆

Proflink Veltra is a PVC system where elegance meets performance. Proflink Veltra has a modern design and straight lines, providing an elegant and minimal look to the windows.



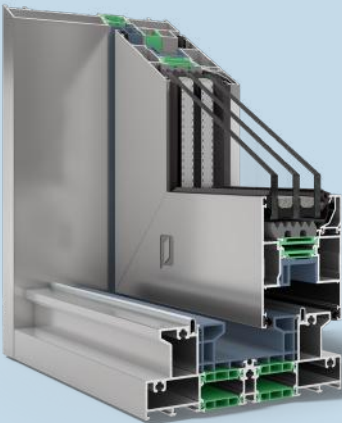
### Proflink Nolix ◆

Proflink Nolix provides a contemporary design with excellent energy efficiency. The three levels of sealing guarantee an impressive resistance to air, water, noise and dust.

Shared accessories: ◆ ● ■

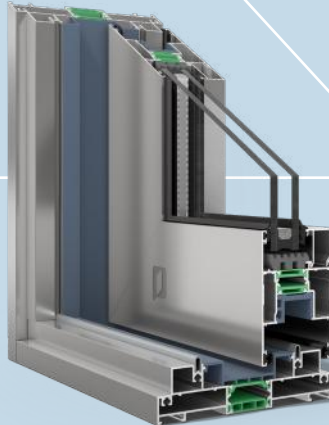


## Sliding solutions



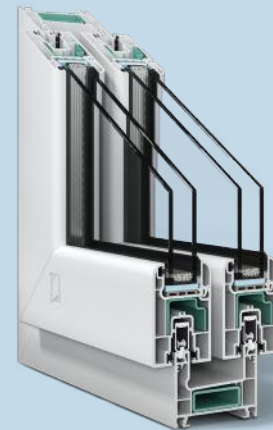
### Profilink Strox ●

Profilink Strox is an aluminium sliding system that delivers exceptional thermal transmittance, along with superior strength and a sleek appearance for modern architectural applications.



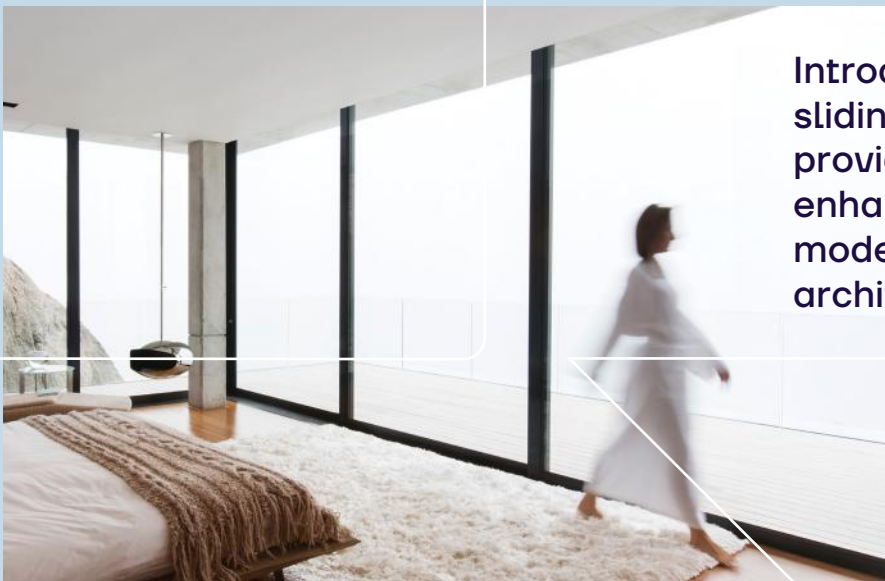
### Profilink Dravos ■

Profilink Dravos is a robust aluminium sliding system that unites strength and elegance, delivering lasting durability, smooth functionality, and a bold architectural presence for modern living spaces.



### Profilink Aspin

Profilink Aspin is a complete and economical sliding system for unrestricted furnishing of balconies, terraces and winter gardens. It is a great alternative to the traditional balcony windows.



Introducing our advanced sliding systems, designed to provide seamless operation, enhanced durability, and modern aesthetics for any architectural project.

### Profilink Mysta ■

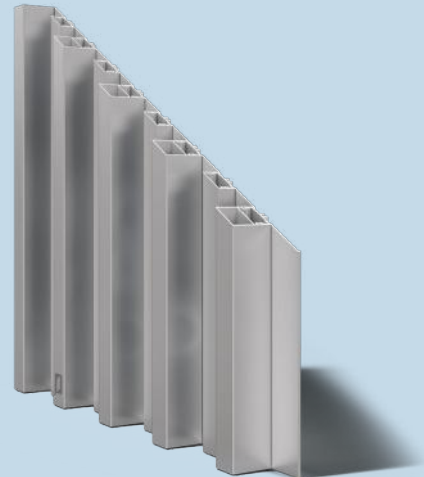
Profilink Mysta is a refined sliding aluminium system that brings together lightness, elegance, and modern design for seamless living spaces.

## Facade solutions



### Profilink Tectra

Profilink Tectra is an elegant curtain wall system that brings refined design and maximum natural light, combining slim profiles with architectural sophistication.



### Profilink Elyra

Profilink Elyra is an aluminium façade slat system that enhances architecture with elegant lines, refined geometry, and a distinctly modern design expression.

## Speciality solutions



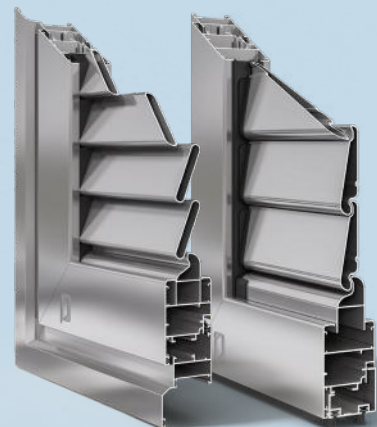
### Opening system without thermal break ■

Suitable for the implementation of interior doors, internal partitions and showcases. The design of the system allows extremely fast and efficient assembly in the production of frames.



### Sliding system without thermal break ■

Ideal for constructing internal sliding structures and glazing balconies or other spaces, this system features a design that enables extremely fast and efficient frame assembly.



### Shutters ■

Profilink shutters with movable or fixed lamellas offer a range of benefits, including enhanced privacy, improved energy efficiency, and versatile light control, all while adding a stylish and functional element to any building.

