

SHEILA BARRY
REALTY REPRESENTATIVE
&
LINDA ZYLIK
REALTY

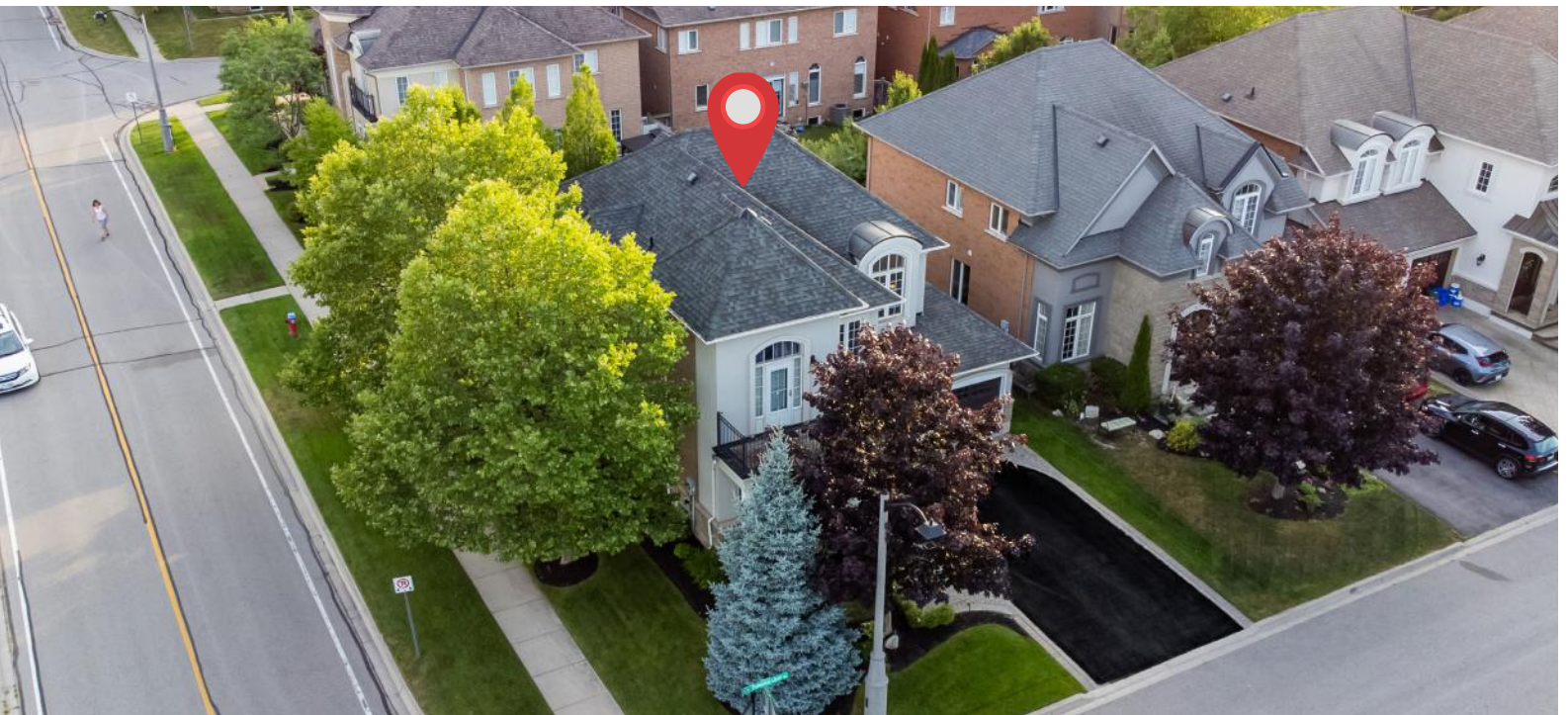
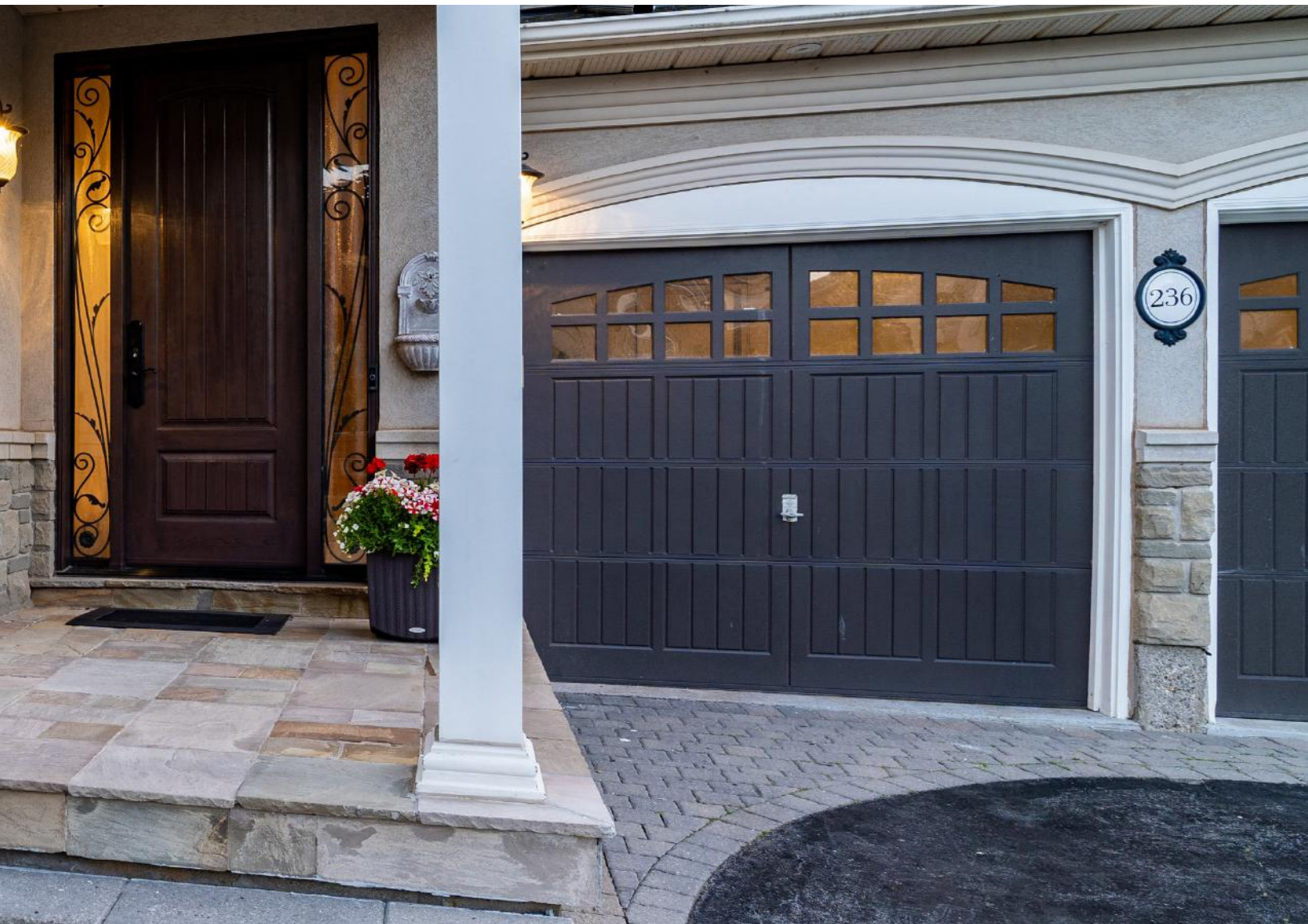


236 *Turning Leaf Rd*
OAKVILLE



Welcome To...

236 TURNING LEAF RD... LOCATION, LOCATION. Stunning family home in one of GTA's most sought after lakeside communities. Handsome curb appeal, 51ft frontage, east-facing home w/inviting front porch is filled with natural light. Beautiful home is the full package complete with newer, gorgeous, SALTWATER POOL w/waterfall - full size: 14ft x 30ft, 5ft 8" deep. Prof.FIN. LOWER LEVEL. Entertainers delight in the resort style backyard oasis & 3,597 sq ft finished living space. Smooth ceilings throughout (9ft,11ft, 8ft LL),hardwoods/ceramics (no carpet), two walkouts, two skylights, granite counters, LED pot lights. Flowing, spacious, open plan layout. Main floor family room w/vaulted ceiling, skylights, stone wall, built-ins, gas fireplace. Gourmet eat-in kitchen, granite counters, Jenn-Air gas stove/range-hood & walk-out to patio. Primary bedroom/en-suite spa, glass shower, soaker tub, double vanity. 4th bedroom w/11ft ceiling & walkout to wraparound balcony - perfect for home office. Newer, spacious lower level with built-ins, spa-like bathroom w/natural stone tile, glass walk-in shower. Cold room storage; plenty space for office, kids to play. Main floor laundry w/window/entry to garage. Freshly painted in today's neutral palette. Prof. landscaped front, back & side. Numerous mature trees (privacy); stone patio, automatic sprinkler system, exterior pot lights & in-ground LED lighting. . Steps to extensive parks, tennis/pickle ball, soccer, splash-pad, fantastic lakefront, beaches, woodland trails, bike path to d'town Burlington. Enjoy a walk or few mins drive to Bronte village, marina, boardwalk, trendy boutiques & restaurants. Quick access to big-box mall, cinemas & QEW. See supplement for long list of upgrades/highlights. 6-car parking, no sidewalk at front. Brand new plumbing throughout, newly sealed driveway & newer custom front door complete this fabulous move-in ready home on quiet inside corner of prime, well-established neighbourhood. THIS IS LAKESHORE WOODS! Call today.













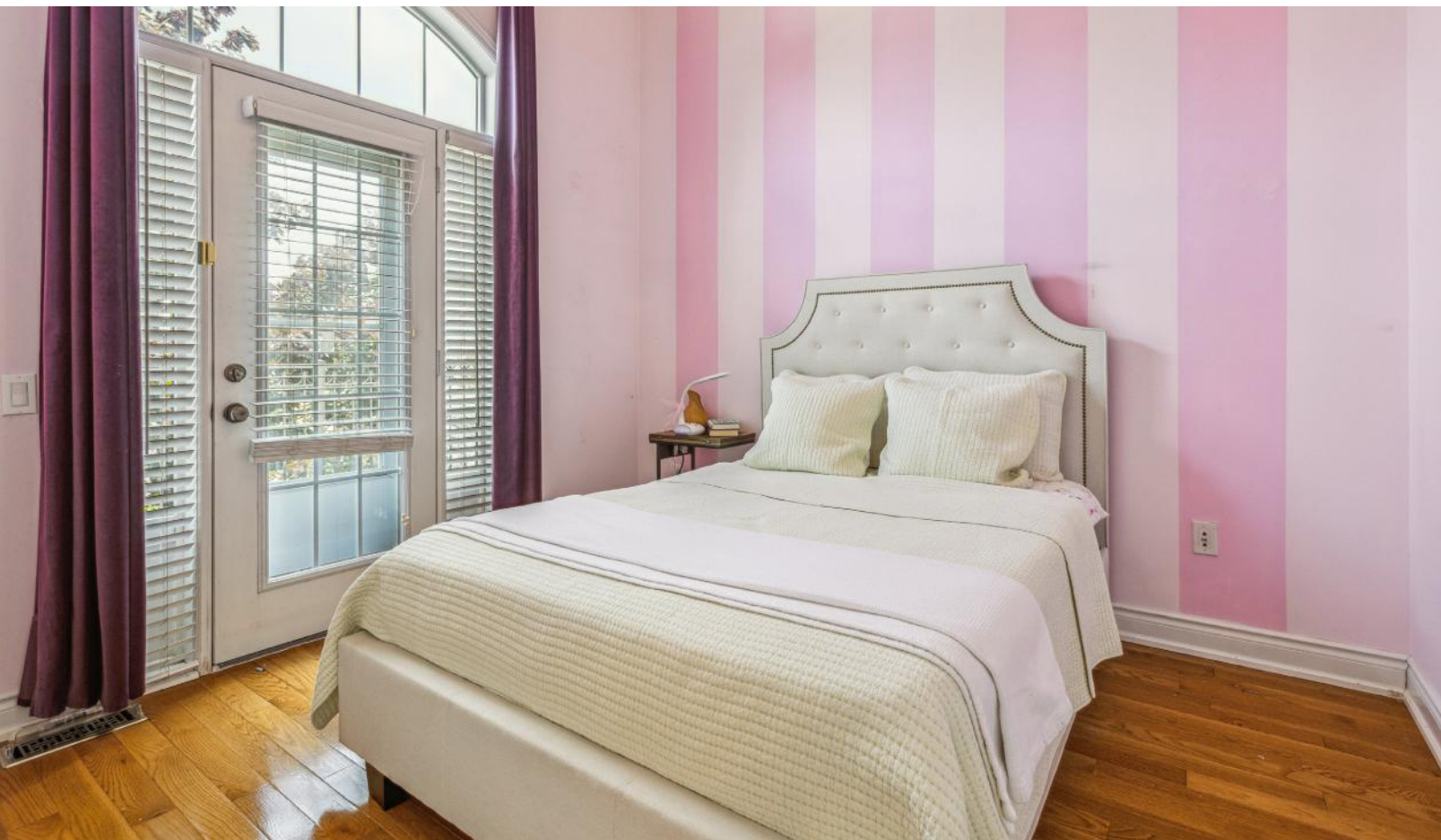




















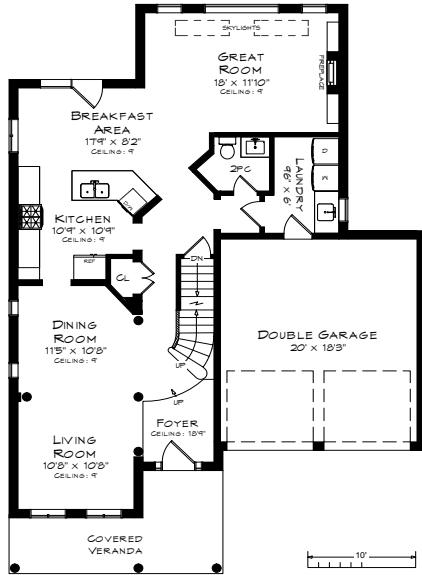




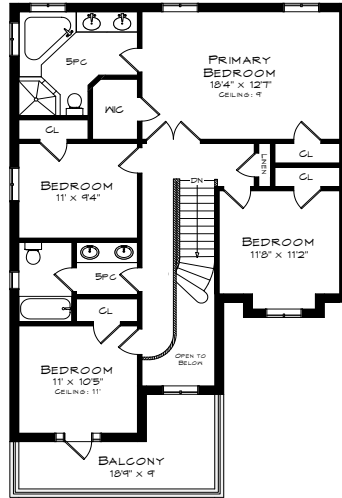




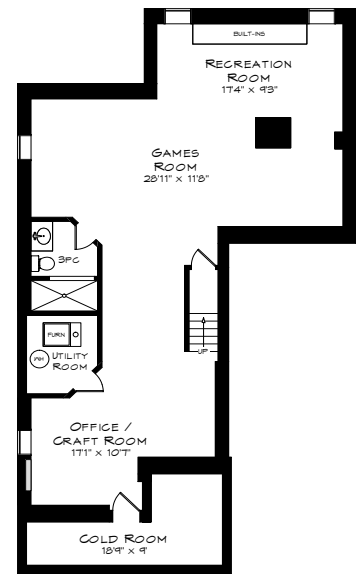
FLOORPLANS & SCHOOLS



MAIN LEVEL
1,143 SQUARE FEET
+ 404 SF (GARAGE)



UPPER LEVEL
1,174 SQUARE FEET
+ 143 SF (BALCONY)



LOWER LEVEL
1,280 SQUARE FEET

CATHOLIC SCHOOLS

ST. DOMINIC CES
2405 Rebecca Street
Oakville
905-827-4401
Regular Track: JK – Grade 8

ST. MARY CES
2175 Colonel William Parkway
Oakville
905-469-0038
Early French Immersion
Grade 1 - 8

ST. NICHOLAS CES
477 Warminster Drive
Oakville
905-827-4231
Extended French Immersion
Grade 5 - 12

**ST. THOMAS AQUINAS
CSS**
124 Dorval Drive
Oakville
905-842-9494
Regular Track &
French Immersion
Grade 9 - 12

PUBLIC SCHOOLS

GLADYS SPEERS PS
2150 Samway Road
Oakville
905-827-4841
English: JK – Grade 6

EASTVIEW PS
2266 Hixon Street
Oakville
905-322-6000
English: Grade 7 – 8

PINE GROVE PS
529 Fourth Line
Oakville
905-844-6371
French Immersion Grade 2 – 8

T.A. BLAKELOCK HS
1160 Rebecca Street
Oakville
905-827-1158
English & French Immersion
Grade 9 – 12



LINDA ZYLIK

Broker

905.467.4745

Linda@SheilaAndLinda.com



SHEILA BARRY

Sales Representative

905.334.4360

Info@SheilaAndLinda.com



LAUREN ZYLIK

Broker

905.399.4693

Lauren@SheilaAndLinda.com



We receive it as a privilege when you entrust us with the sale of your home and our goal is to exceed your expectations. Our team shares a strong work ethic, a desire to always improve, a commitment to always empathize with our sellers and buyers. We are an award-winning team because we have blended our unique strengths and abilities while always striving to be professional, honest and compassionate.

SheilaAndLinda.com