

GET SMART

THE CONNECTED SHOP



**SMART WIFI SOLAR MOTION DETECTOR
USER MANUAL**

Welcome to the Smart WiFi Solar Motion Detector User Manual. Your easy, step-by-step guide to set up and connect your Smart WiFi Solar Motion Detector.

The device is designed to be easy-to-use and to replace all motion detectors with this modern smart motion detector.



SUMMARY

I. Device Set Up



1. Set-up Guide
 - a) Set-up Video

II. Initialization



2. Initial State of your device
 - a) Manage Device

III. Mobile App Connection



3. Registering on the Mobile App
 - a) Downloading the Mobile App
 - b) Adding Devices

PACKAGING DETAILS

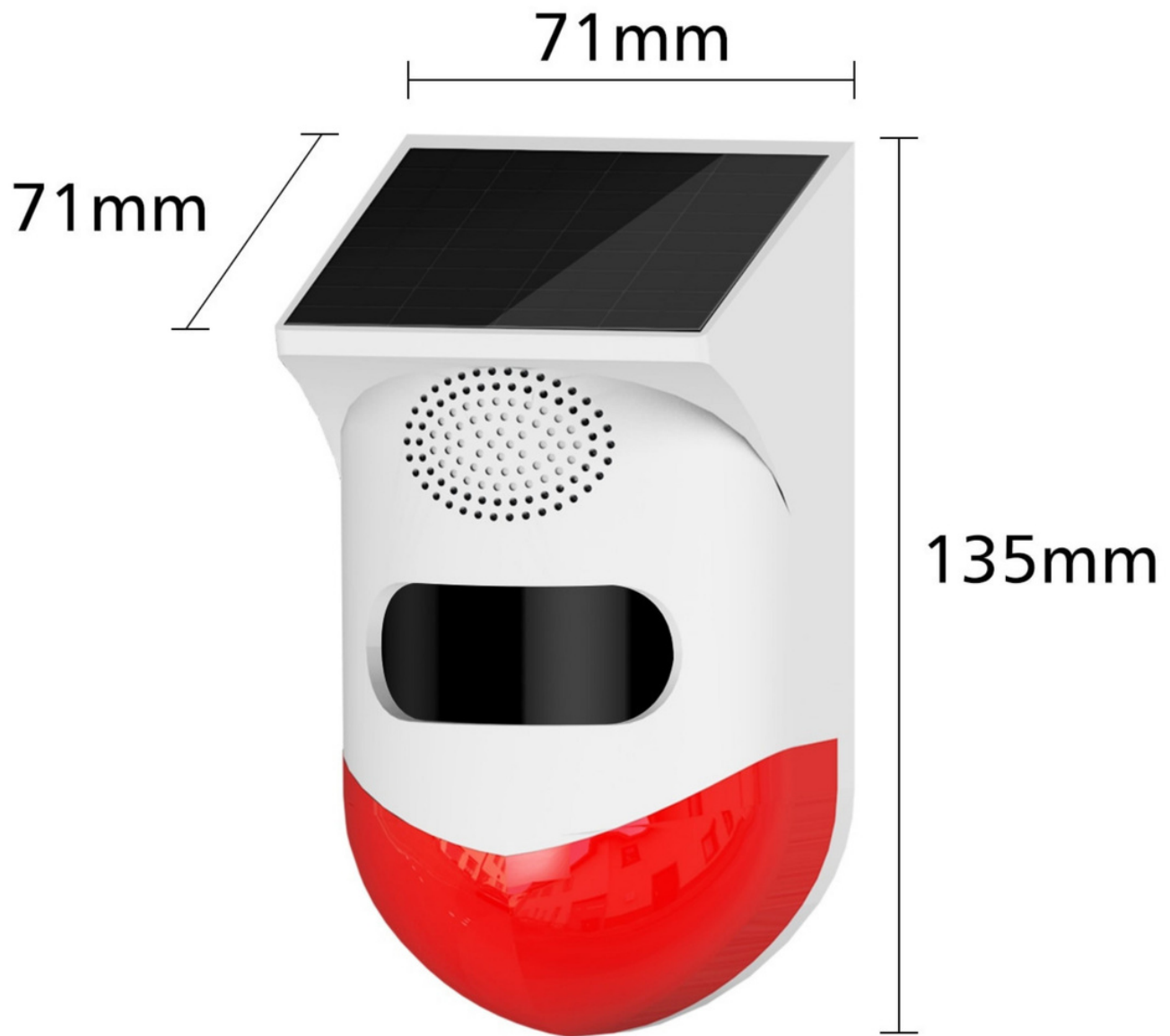


1 Smart Motion Detector

3 Remote Control

2 Screws

STEP-BY-STEP SET-UP GUIDE



1. SET UP



- a. Remove all items from its original box
- b. Long-press the power button (until the light flashes) at the back of the device to activate it and begin network setup
- c. Afterwards, place the device on a flat surface (e.g., wall)
- d. You can now follow the following videos and steps on how to properly pair your device with the mobile app



2. INITIAL STATE OF YOUR DEVICE



a) Manage Device

- To manage the device via the app, pair the device and your phone first via Bluetooth
- Make sure to long-press the power button on the device and turn on mobile Bluetooth
- Wait for the device to successfully pair
- Afterwards, you can now control the device via the mobile app and the remote control



3. MOBILE APP CONNECTION



a) Downloading the App

Download the application on the Google Play Store or Apple AppStore by searching “Tuya Smart” or by scanning the QR code below

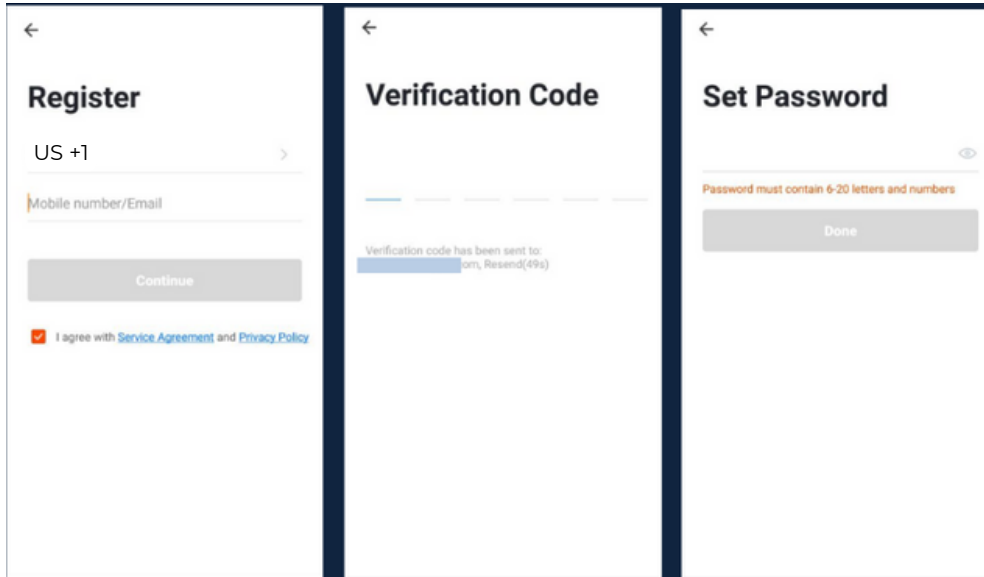


b) Logging in and Registering

After Downloading the App

- Select the country from which you will be using the device, usually the app will prompt it automatically
- You will be redirected to register via email where a verification code will be sent and proceed to enter it on the app in the allotted time limit
- Once the verification code has been entered into the app, you will be asked to set your password
- You will then have full access to the Tuya Smart Platform

3. MOBILE APP CONNECTION

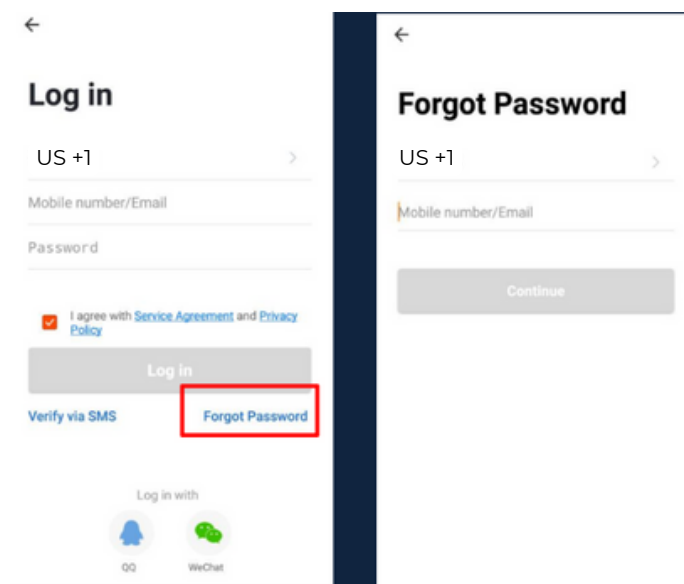


Should you be an existing user to the Tuya Smart Platform, log in using your email and password from the login page.

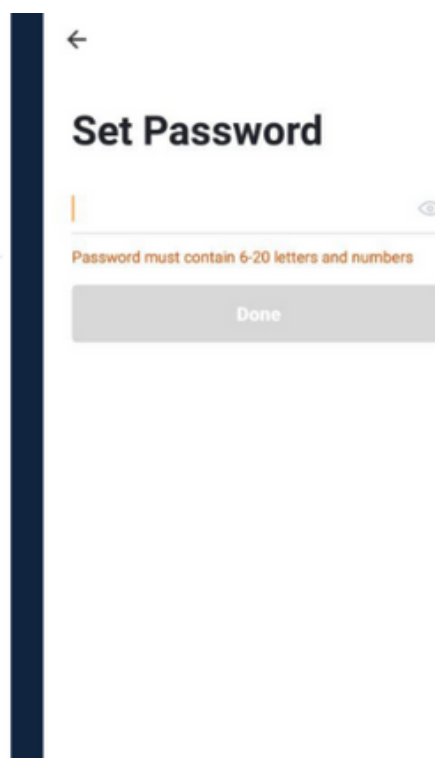
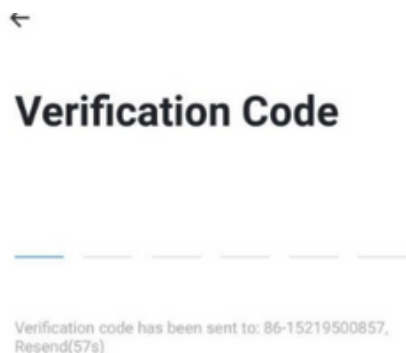
c) Resetting your Password

In case you have forgotten your password and need to reset it, please follow the steps below:

- On the Login Page, when prompted for your email & password, click “Forgot Password” button located below the “Login” button
- Select the country from which you will be using the device, usually the app will prompt it automatically



3. MOBILE APP CONNECTION



- You will be prompted to enter the email where a verification code will be sent and proceed to enter it on the app in the allotted time limit
- Once the verification code has been entered into the app, you will be asked to set your new password
- You will then have full access to the Tuya Smart Platform

In the case that you would like to change your password from the app, please follow the steps below:

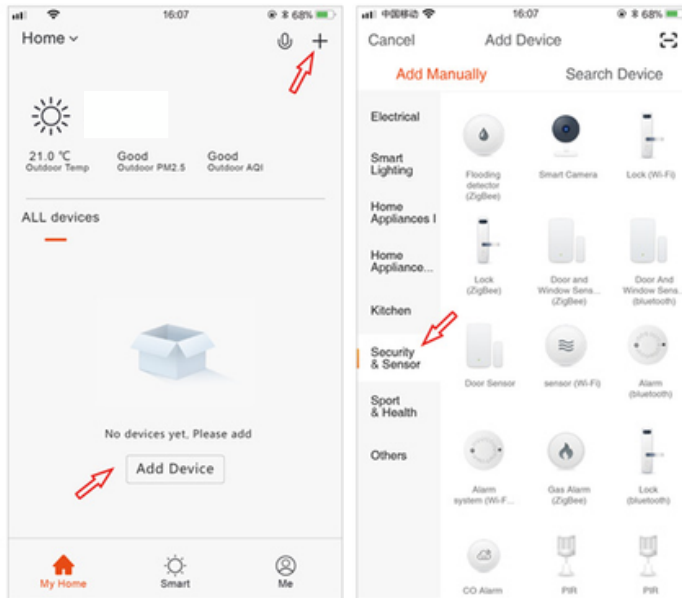
- Tap the 'Me' tab on the bottom right hand corner of your screen
- Click 'Change Login Password'
- You will be taken to the 'Account Verification' page and then tap 'Get Verification Code' button
- This will send a verification to your registered email
- Enter the code in the app
- Proceed to enter the new password

3. MOBILE APP CONNECTION



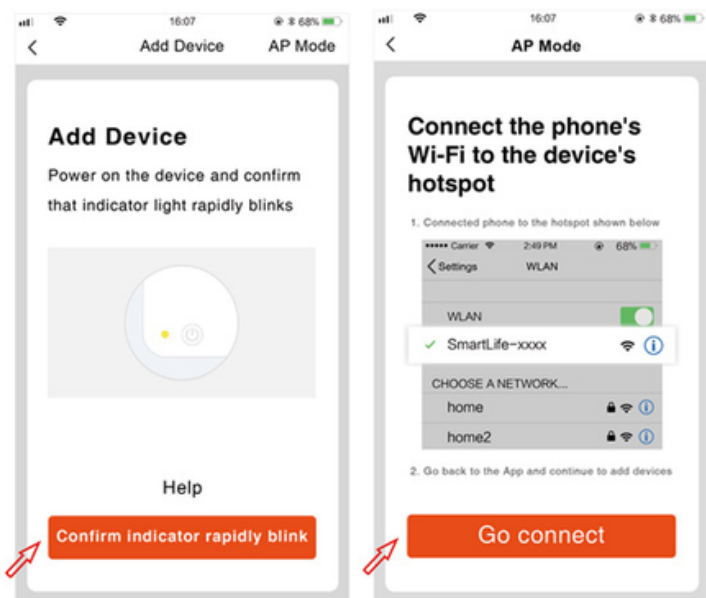
d) Adding Devices

To add devices on the app, please follow the instructions below. Your devices and phone must be connected to the same Wi-Fi network in order for this to work.

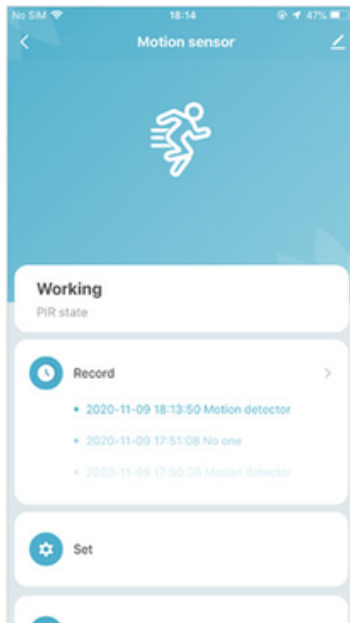


- To add a device, click the 'Add Device' or tap the 'Plus' button on the top-right corner of your screen and select 'Add Device'

- Make sure to turn on the device by pressing the power button and keeping your mobile phone in close proximity

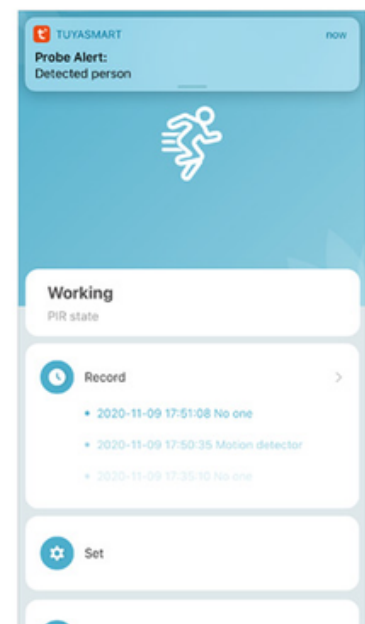


3. MOBILE APP CONNECTION



- Wait for the app to finish searching for the device until a successful message pops up.

- Finish adding your device. Once this has been done successfully, you can go on to change the name of your device and control its functions.



Congratulations!

You have successfully set up your very own Smart WiFi Solar Motion Detector.

Thank you for being a valued customer of The Connected Shop.

www.theconnectedshop.com





THE CONNECTED SHOP