

HP

HALLIDAY PRODUCTS

PRODUCT CATALOG

OPTIONAL PROTECTIVE GRATING PANEL

STANDARD FEATURES:

- ALUMINUM "1" BAR CONSTRUCTION
- ALL T-316 STAINLESS STEEL HARDWARE
- LOCKABLE WITH OWNER-SUPPLIED PADLOCK
- HINGED WITH POSITIVE LATCH TO MAINTAIN UPRIGHT POSITION
- LOAD RATED CONSISTENT WITH ACCESS COVER

PADLOCK LUG FOR GRATING PANEL

COVER LOCKING DEVICE

NUTRIL (TWO SIDES)

STL. H FOR

ARM FOR GRATING

HINGED GRATING PANEL

APPLICATIONS:

THE OPTIONAL PROTECTIVE GRATING PANEL SHOULD BE SPECIFIED FOR APPLICATIONS IN AREAS THAT REQUIRE ADDITIONAL PROTECTION. SHOULD THE ACCESS COVER BE LEFT IN THE OPEN POSITION, IT WILL ALSO BE

SAFETY ORANGE POWDER COATING FINISH

CONCRETE OPENING





1-800-298-1027

www.HallidayProducts.com

What kind of organization do you prefer doing business with? What factors help you decide? Is product quality, fast and efficient customer service, and price important to you? How about timely shipments and an easy-to-use website?

At Halliday Products, we've been in business since 1972, and we believe that every aspect of your experience with us is crucial. We're constantly striving to improve our products and provide top-notch customer service to ensure your complete satisfaction.

At Halliday Products, we always put in our utmost effort to give you an exceptional experience. While we may not always achieve perfection, you can trust that we'll go above and beyond to make sure you're satisfied as a customer. Your happiness is our priority, and we're committed to continuously improving our products and customer service.

Experience the difference. Choose Halliday Products, your source for quality metal products since 1972.



Halliday Products Inc. WEFTEC Booth



120,000 Square Foot Facility

Contact us by any of the following methods:



Visit us online: www.hallidayproducts.com



Call our friendly team: 800-298-1027



Email us: sales@hallidayproducts.com

Table Of Contents

Access Doors and Options	5-26
Series W Access Doors	6-9, 12-13
Series S Access Doors	10-11, 14-15
Series C1R Access Door	16
Series R1R Access Door	17
Series H Access Doors	18-23
Series F1R Access Door	24
Access Cover Popular Options	25
Optional Protective Grating Panel	26
Series F1H Floodtight Covers	28
Retro-Grade™	29-32
About Retro-Grade	30
Series X Retro-Grade	31
Price Quotation Form	32
Portable Hoists and Sockets	33-36
Series D Portable Hoists	34-35
Series D Hoist Sockets	36
Mixer Masts	37-38
Series M Mixer Masts	38
Telescoping Valves	39-41
Series V Telescoping Valves 3	40-41
Portable Safety Grates	42-43
Series P Portable Manhole Safety Gate	43
Ladders/Safety Extension	44-46
Series L1B and L1D Ladders	45
Series L1E Ladder Extension	46
Debris Baskets	47-49
Series B Trash Baskets	48-49
Slide and Stop Gates	50-53
Series G Slide Gates	51-52
Series N Stop Gate	53
Guide Rail Brackets	54-55
Series U Guide Rail Brackets	55
Accessories	56-57
Series K4A Cable Assembly	57
Series J4A Cable Holder	57
Series A Anchor Bolts	57

Access Door Standard Features

	W1S	W2S	W1C	W2C	S1S	S2S	H1C	H2C	W1R	W2R	S1R	S2R	H1W	H2W	C1R	R1R	H1R	H2R	F1R	F1H
Lifetime Guarantee	●	●	●	●	●	●	●	●	●	●	●	●	●	●	●	●	●	●	●	●
Auto Lock T316 SS Hold Open Arm	●	●	●	●	●	●	●	●	●	●	●	●	●	●	●	●	●	●	●	●
316 Stainless Steel Hinges	●	●	●	●	●	●	●	●	●	●	●	●	●	●	●	●	●	●	●	●
316 SS Slam Lock W/Removable Key	●	●	●	●	●	●	●	●					●	●			●	●		
Non Corrosive Locking Bar									●	●	●	●			●	●				
Padlock Lug																			●	
Single Leaf Construction	●		●		●		●		●		●		●		●	●	●		●	●
Double Leaf Construction		●		●		●		●		●		●		●				●		
300 lb per sq ft Load Rating	●	●	●	●	●	●			●	●	●	●			●	●				
625 per square ft																			●	
H2O Load Rating							●	●					●	●			●	●		●
Extruded Aluminum Channel Frame	●	●	●	●			●	●	●	●			●	●						
Extruded Aluminum Angle Frame					●	●					●	●				●	●	●	●	●
Recessed Lifting Handle	●	●	●	●	●	●	●	●	●	●	●	●	●	●	●	●	●	●		●
Stainless Steel Spring Assist	●	●	●	●	●	●	●	●					●	●			●	●		●
Built In Neoprene Gasket	●	●	●	●	●	●													●	●
Bituminous Coating	●	●	●	●	●	●														
1 1/2" NPT Coupling	●	●	●	●			●	●	●	●			●	●						
Stainless Steel Pressure Locks																			●	
Maximum Allowable Deflection of 1/150 of the Span	●	●	●	●	●	●	●	●	●	●	●	●	●	●	●	●	●	●	●	●

Access Doors and Options



STANDARD FEATURES

- 300 LBS. PER SQ. FT. (1464 KG PER SQ. M.)
- EXTRUDED ALUMINUM
- SINGLE LEAF CONSTRUCTION
- AUTO-LOCK T-316 STAINLESS
- HOLD OPEN ARM T-316 STAINLESS
- T-316 STAINLESS
- STAINLESS STEEL
- BUILT-IN EPDM GASKET
- NON-OZONING
- RECESSED HINGES
- LIFETIME WARRANTY

HARDWARE
AVAILABLE KEY

S.S.T.L.
SPRING
ASSIST

HINGE
TAMPER
PROOF
FASTENERS

C DIM
A DIM + 7 1/2" (190 MM)

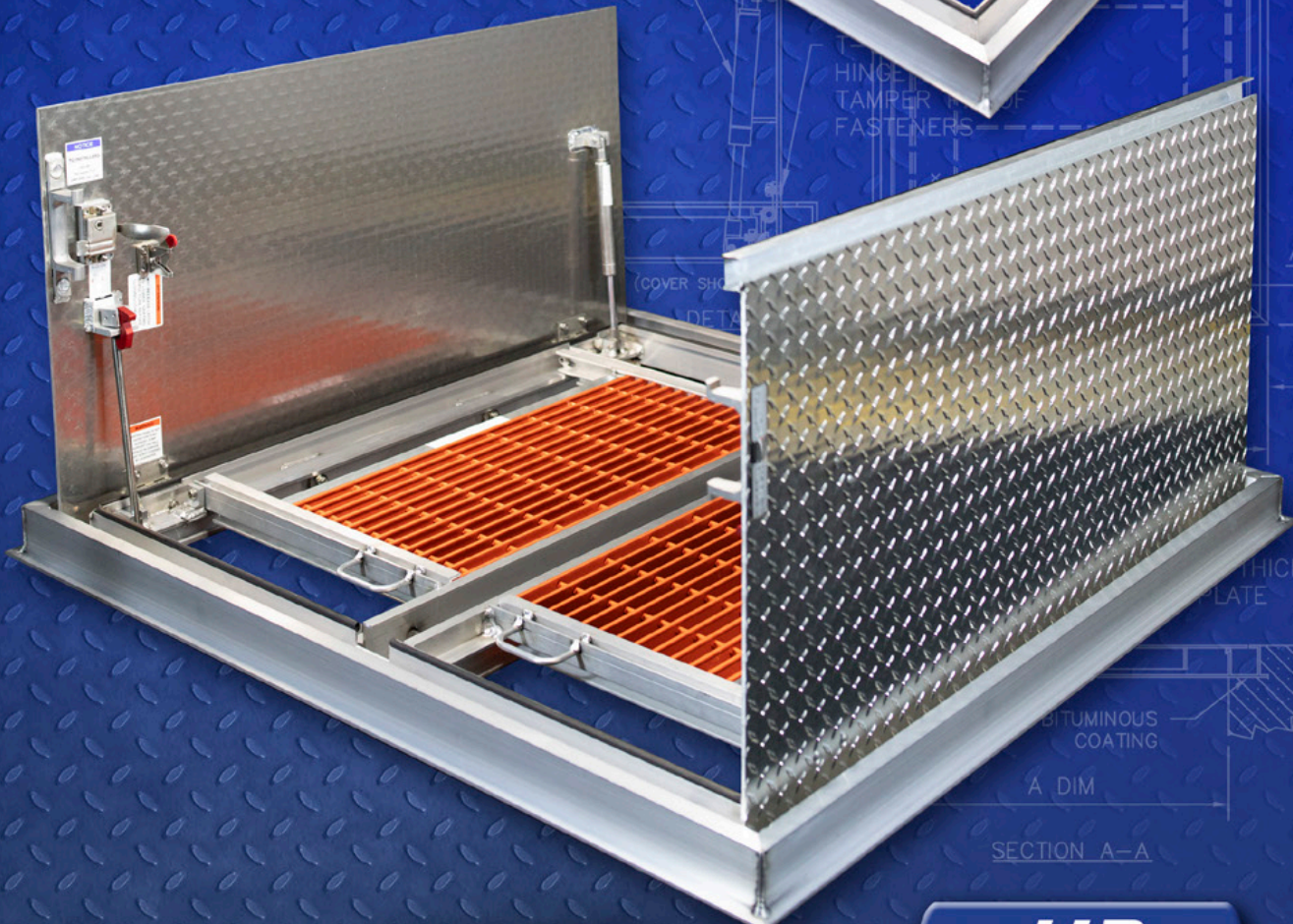
3 3/4" (95 MM) TYP.

THICK ALUM.
PLATE

BITUMINOUS
COATING

A DIM

SECTION A-A



Series W1S Access Door

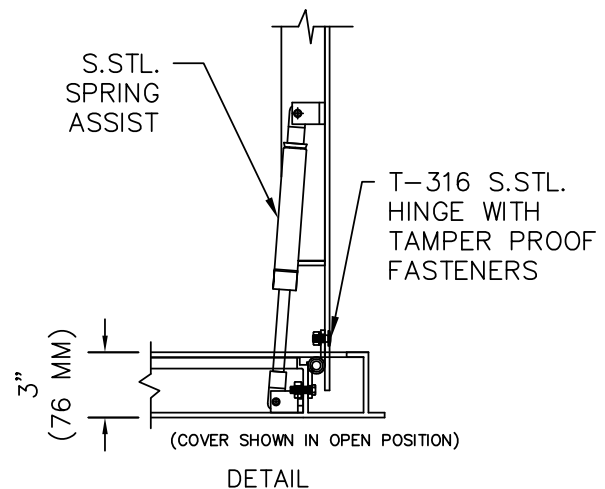
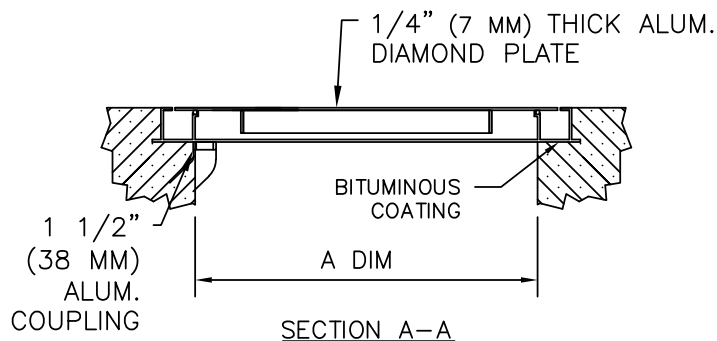
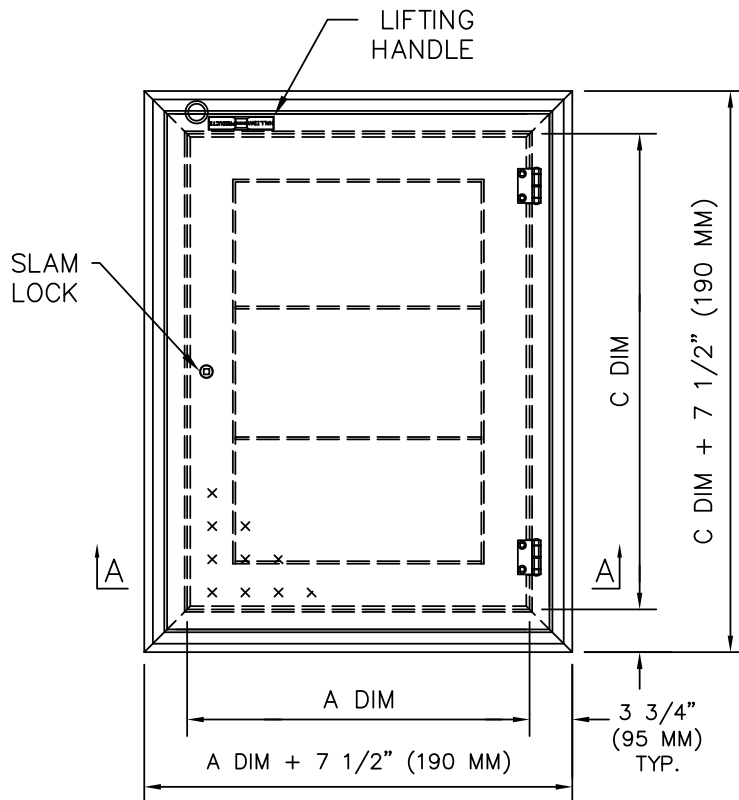


STANDARD FEATURES:

- 300 LBS. PER SQ. FT. LOAD RATING
(1464 KG PER SQ. METER LOAD RATING)
- EXTRUDED ALUMINUM CHANNEL FRAME
- SINGLE LEAF CONSTRUCTION
- AUTO-LOCK T-316 STAINLESS STEEL
HOLD OPEN ARM WITH RELEASE HANDLE
- T-316 STAINLESS STEEL HINGES AND ATTACHING HARDWARE
- T-316 STAINLESS STEEL SLAM LOCK WITH REMOVABLE KEY
- STAINLESS STEEL COMPRESSION SPRING ASSIST
- BUILT-IN EPDM CUSHION/GASKET
- NON-OZONE DEPLETING BITUMINOUS COATING
- RECESSED LIFTING HANDLE
- LIFETIME GUARANTEE

STANDARD SIZES

QTY.	MODEL NO.	A DIM INCHES (MM)	C DIM INCHES (MM)	UNIT WT. LBS. (KG)
	W1S2424	24 (610)	24 (610)	46 (20)
	W1S2430	24 (610)	30 (762)	51 (23)
	W1S2436	24 (610)	36 (914)	61 (28)
	W1S2442	24 (610)	42 (1067)	77 (35)
	W1S2448	24 (610)	48 (1219)	85 (39)
	W1S3030	30 (762)	30 (762)	62 (28)
	W1S3036	30 (762)	36 (914)	69 (31)
	W1S3042	30 (762)	42 (1067)	77 (35)
	W1S3048	30 (762)	48 (1219)	85 (39)
	W1S3054	30 (762)	54 (1372)	99 (45)
	W1S3060	30 (762)	60 (1524)	102 (46)
	W1S3636	36 (914)	36 (914)	78 (35)
	W1S3642	36 (914)	42 (1067)	89 (40)
	W1S3648	36 (914)	48 (1219)	97 (44)
	W1S3654	36 (914)	54 (1372)	107 (49)
	W1S3660	36 (914)	60 (1524)	116 (53)
	W1S3666	36 (914)	66 (1676)	126 (57)
	W1S3672	36 (914)	72 (1829)	135 (61)
	W1S4242	42 (1067)	42 (1067)	108 (49)

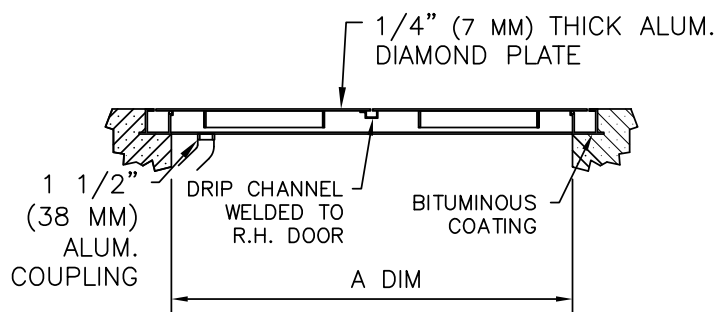
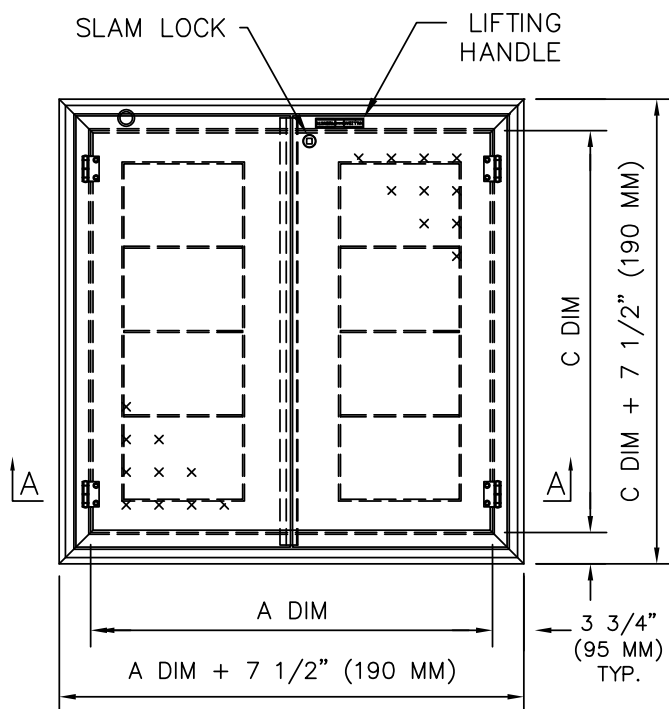


Series W2S Access Door



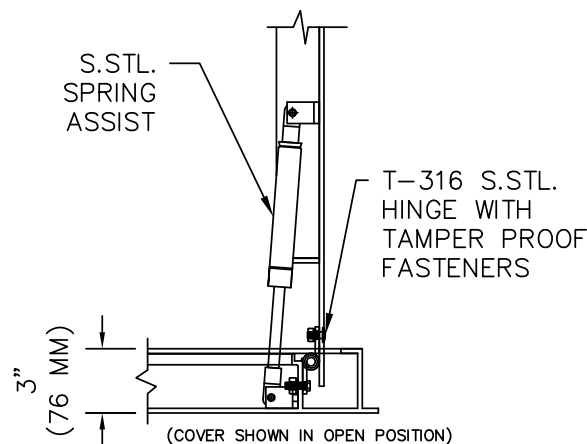
STANDARD FEATURES:

- 300 LBS. PER SQ. FT. LOAD RATING
(1464 KG PER SQ. METER LOAD RATING)
- EXTRUDED ALUMINUM CHANNEL FRAME
- DOUBLE LEAF CONSTRUCTION
- AUTO-LOCK T-316 STAINLESS STEEL
HOLD OPEN ARM WITH RELEASE HANDLE
- T-316 STAINLESS STEEL HINGES AND ATTACHING HARDWARE
- T-316 STAINLESS STEEL SLAM LOCK WITH REMOVABLE KEY
- STAINLESS STEEL COMPRESSION SPRING ASSIST
- BUILT-IN EPDM CUSHION/GASKET
- NON-OZONE DEPLETING BITUMINOUS COATING
- RECESSED LIFTING HANDLE
- LIFETIME GUARANTEE



SECTION A-A

STANDARD SIZES				
QTY.	MODEL NO.	A DIM INCHES (MM)	C DIM INCHES (MM)	UNIT WT. LBS. (KG)
	W2S4242	42 (1067)	42 (1067)	108 (48)
	W2S4842	48 (1219)	42 (1067)	115 (52)
	W2S4848	48 (1219)	48 (1219)	126 (57)
	W2S5442	54 (1372)	42 (1067)	124 (56)
	W2S5448	54 (1372)	48 (1219)	136 (62)
	W2S5454	54 (1372)	54 (1372)	149 (68)
	W2S6030	60 (1524)	30 (762)	102 (46)
	W2S6036	60 (1524)	36 (914)	116 (53)
	W2S6042	60 (1524)	42 (1067)	132 (60)
	W2S6048	60 (1524)	48 (1219)	148 (67)
	W2S6054	60 (1524)	54 (1372)	162 (73)
	W2S6060	60 (1524)	60 (1524)	177 (80)
	W2S6636	66 (1676)	36 (914)	126 (57)
	W2S6648	66 (1676)	48 (1219)	160 (73)
	W2S7236	72 (1829)	36 (914)	135 (61)
	W2S7242	72 (1829)	42 (1067)	154 (70)
	W2S7248	72 (1829)	48 (1219)	171 (78)
	W2S7254	72 (1829)	54 (1372)	188 (85)
	W2S7260	72 (1829)	60 (1524)	203 (92)



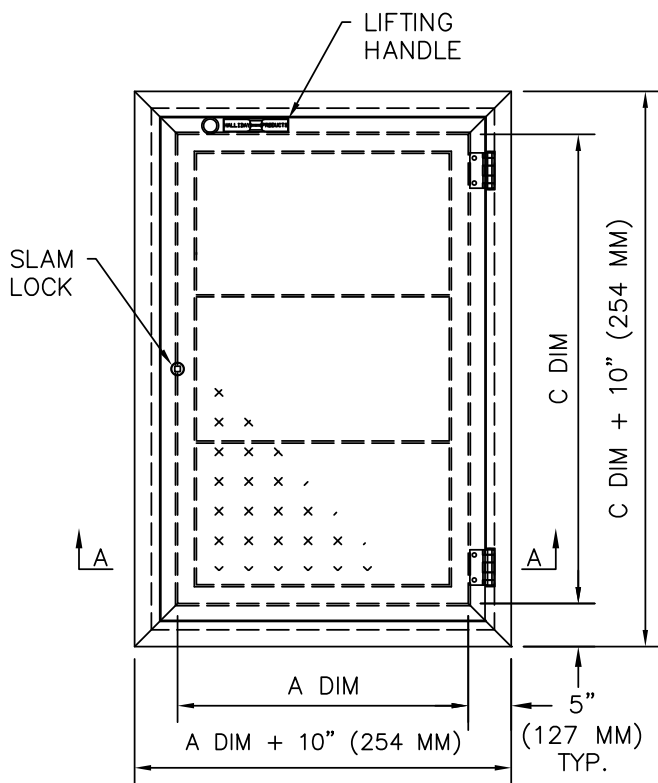
DETAIL

Series W1C Access Door



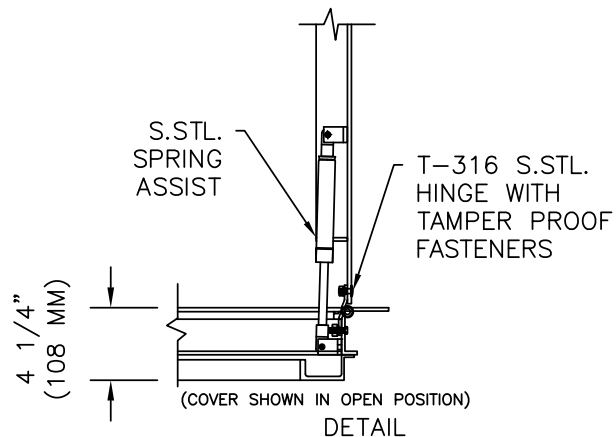
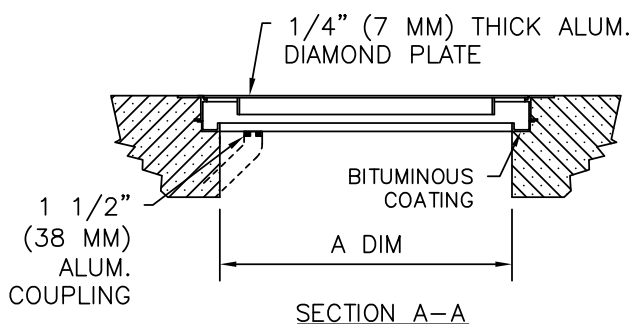
STANDARD FEATURES:

- 300 LBS. PER SQ. FT. LOAD RATING
(1464 KG PER SQ. METER LOAD RATING)
- EXTRUDED ALUMINUM CHANNEL FRAME
- SINGLE LEAF CONSTRUCTION
- AUTO-LOCK T-316 STAINLESS STEEL
HOLD OPEN ARM WITH RELEASE HANDLE
- T-316 STAINLESS STEEL HINGES AND ATTACHING HARDWARE
- T-316 STAINLESS STEEL SLAM LOCK WITH REMOVABLE KEY
- STAINLESS STEEL COMPRESSION SPRING ASSIST
- BUILT-IN EPDM CUSHION/GASKET
- NON-OZONE DEPLETING BITUMINOUS COATING
- RECESSED LIFTING HANDLE
- LIFETIME GUARANTEE



STANDARD SIZES

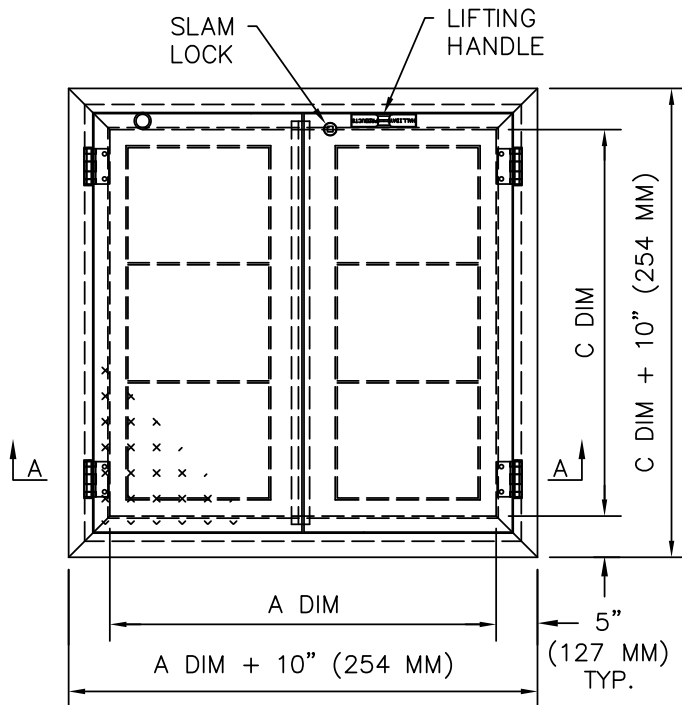
QTY.	MODEL NO.	A DIM INCHES (MM)	C DIM INCHES (MM)	UNIT WT. LBS. (KG)
	W1C2424	24 (610)	24 (610)	57 (26)
	W1C2430	24 (610)	30 (762)	64 (29)
	W1C2436	24 (610)	36 (914)	72 (33)
	W1C2442	24 (610)	42 (1067)	80 (36)
	W1C2448	24 (610)	48 (1219)	88 (40)
	W1C3030	30 (762)	30 (762)	73 (33)
	W1C3036	30 (762)	36 (914)	82 (37)
	W1C3042	30 (762)	42 (1067)	90 (41)
	W1C3048	30 (762)	48 (1219)	100 (45)
	W1C3054	30 (762)	54 (1372)	108 (49)
	W1C3060	30 (762)	60 (1524)	116 (53)
	W1C3636	36 (914)	36 (914)	91 (41)
	W1C3642	36 (914)	42 (1067)	101 (46)
	W1C3648	36 (914)	48 (1219)	111 (50)
	W1C3654	36 (914)	54 (1372)	120 (54)
	W1C3660	36 (914)	60 (1524)	130 (59)
	W1C3666	36 (914)	66 (1676)	140 (64)
	W1C3672	36 (914)	72 (1829)	150 (68)
	W1C4242	42 (1067)	42 (1067)	113 (51)



Series W2C Access Door

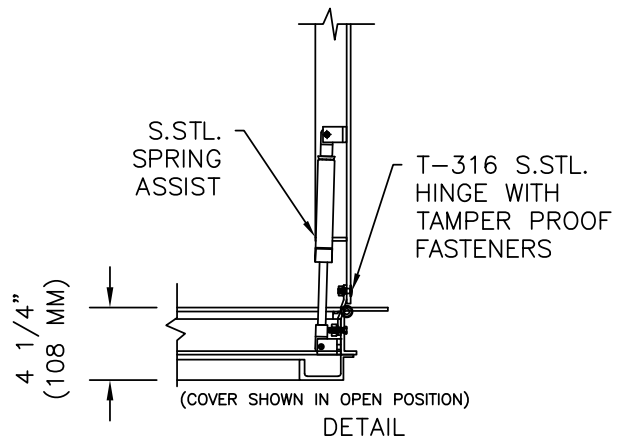
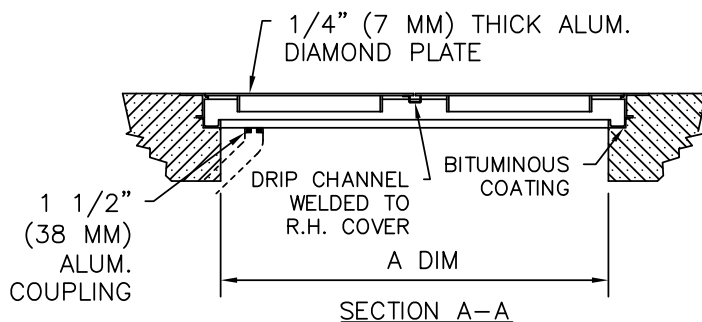
STANDARD FEATURES:

- 300 LBS. PER SQ. FT. LOAD RATING
(1464 KG PER SQ. METER LOAD RATING)
- EXTRUDED ALUMINUM CHANNEL FRAME
- DOUBLE LEAF CONSTRUCTION
- AUTO-LOCK T-316 STAINLESS STEEL
HOLD OPEN ARM WITH RELEASE HANDLE
- T-316 STAINLESS STEEL HINGES AND ATTACHING HARDWARE
- T-316 STAINLESS STEEL SLAM LOCK WITH REMOVABLE KEY
- STAINLESS STEEL COMPRESSION SPRING ASSIST
- BUILT-IN EPDM CUSHION/GASKET
- NON-OZONE DEPLETING BITUMINOUS COATING
- RECESSED LIFTING HANDLE
- LIFETIME GUARANTEE



STANDARD SIZES

QTY.	MODEL NO.	A DIM INCHES (MM)	C DIM INCHES (MM)	UNIT WT. LBS. (KG)
	W2C4242	42 (1067)	42 (1067)	119 (54)
	W2C4842	48 (1219)	42 (1067)	130 (59)
	W2C4848	48 (1219)	48 (1219)	142 (64)
	W2C5442	54 (1372)	42 (1067)	141 (64)
	W2C5448	54 (1372)	48 (1219)	154 (70)
	W2C5454	54 (1372)	54 (1372)	166 (75)
	W2C6030	60 (1524)	30 (762)	122 (55)
	W2C6036	60 (1524)	36 (914)	135 (61)
	W2C6042	60 (1524)	42 (1067)	151 (68)
	W2C6048	60 (1524)	48 (1219)	165 (75)
	W2C6054	60 (1524)	54 (1372)	179 (81)
	W2C6060	60 (1524)	60 (1524)	195 (88)
	W2C6636	66 (1676)	36 (914)	145 (66)
	W2C6648	66 (1676)	48 (1219)	177 (80)
	W2C7236	72 (1829)	36 (914)	154 (70)
	W2C7242	72 (1829)	42 (1067)	173 (78)
	W2C7248	72 (1829)	48 (1219)	188 (85)
	W2C7254	72 (1829)	54 (1372)	204 (92)
	W2C7260	72 (1829)	60 (1524)	222 (101)

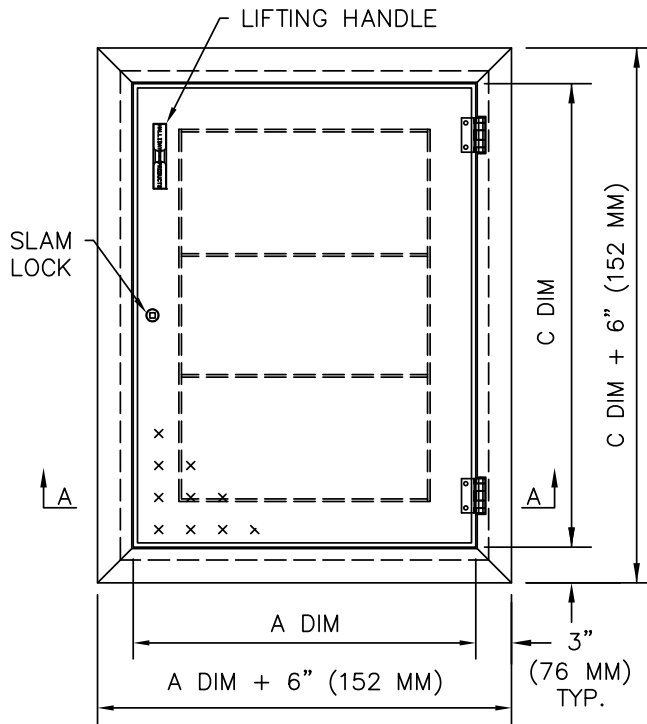


Series S1S Access Door

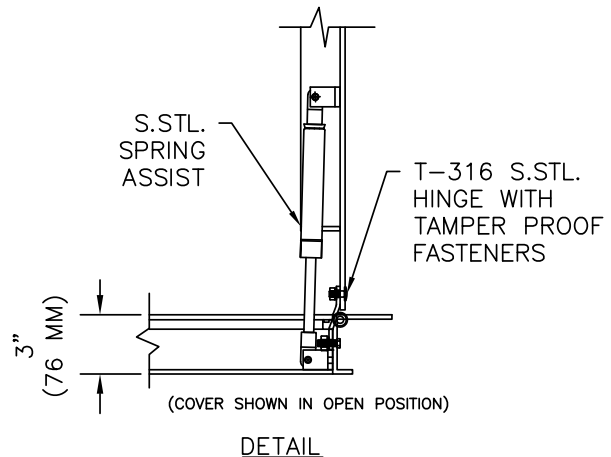
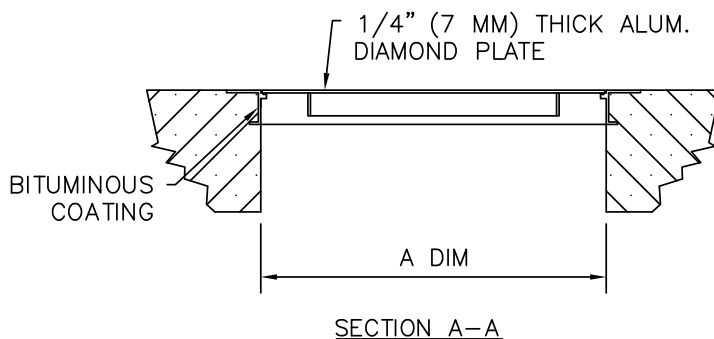


STANDARD FEATURES:

- 300 LBS. PER SQ. FT. LOAD RATING
(1464 KG PER SQ. METER LOAD RATING)
- EXTRUDED ALUMINUM ANGLE FRAME
- SINGLE LEAF CONSTRUCTION
- AUTO-LOCK T-316 STAINLESS STEEL
HOLD OPEN ARM WITH RELEASE HANDLE
- T-316 STAINLESS STEEL HINGES AND ATTACHING HARDWARE
- T-316 STAINLESS STEEL SLAM LOCK WITH REMOVABLE KEY
- STAINLESS STEEL COMPRESSION SPRING ASSIST
- BUILT-IN EPDM CUSHION/GASKET
- NON-OZONE DEPLETING BITUMINOUS COATING
- RECESSED LIFTING HANDLE
- LIFETIME GUARANTEE



STANDARD SIZES				
QTY.	MODEL NO.	A DIM INCHES (MM)	C DIM INCHES (MM)	UNIT WT. LBS. (KG)
	S1S2424	24 (610)	24 (610)	37 (17)
	S1S2430	24 (610)	30 (762)	42 (19)
	S1S2436	24 (610)	36 (914)	48 (22)
	S1S2442	24 (610)	42 (1067)	55 (25)
	S1S2448	24 (610)	48 (1219)	61 (28)
	S1S3030	30 (762)	30 (762)	49 (22)
	S1S3036	30 (762)	36 (914)	57 (26)
	S1S3042	30 (762)	42 (1067)	64 (29)
	S1S3048	30 (762)	48 (1219)	71 (32)
	S1S3054	30 (762)	54 (1372)	79 (36)
	S1S3060	30 (762)	60 (1524)	87 (39)
	S1S3636	36 (914)	36 (914)	65 (25)
	S1S3642	36 (914)	42 (1067)	79 (36)
	S1S3648	36 (914)	48 (1219)	85 (39)
	S1S3654	36 (914)	54 (1372)	91 (41)
	S1S3660	36 (914)	60 (1524)	100 (45)
	S1S3666	36 (914)	66 (1676)	109 (49)
	S1S3672	36 (914)	72 (1829)	116 (53)
	S1S4242	42 (1067)	42 (1067)	93 (42)



Series S2S Access Door

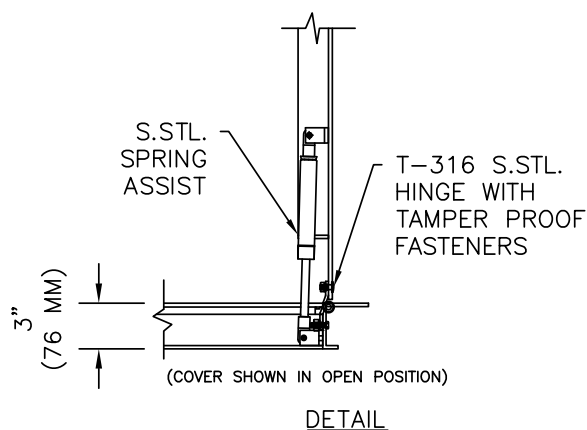
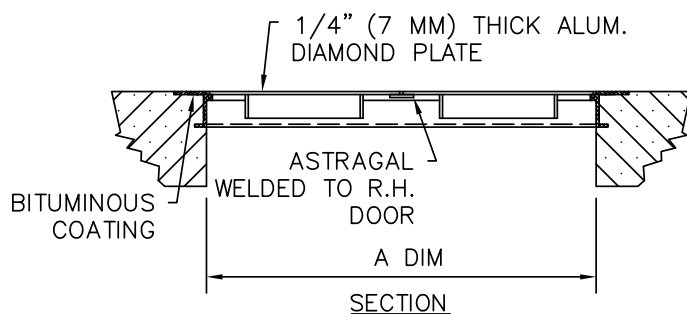
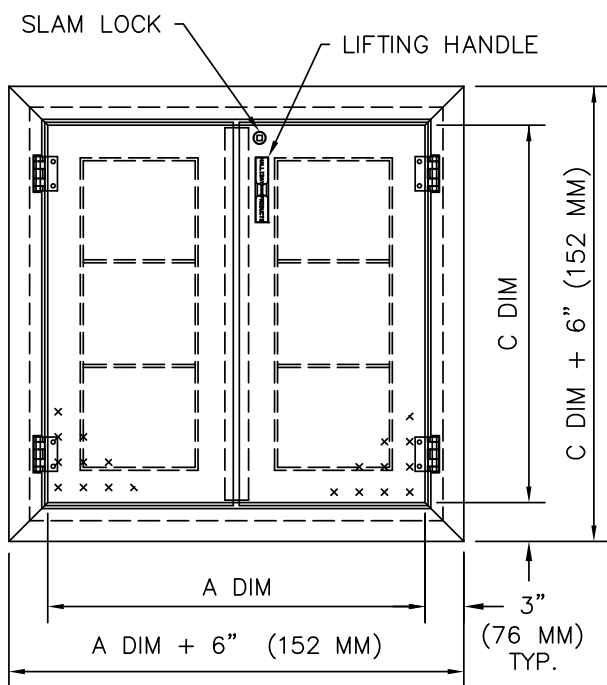


STANDARD FEATURES:

- 300 LBS. PER SQ. FT. LOAD RATING
(1464 KG PER SQ. METER LOAD RATING)
- EXTRUDED ALUMINUM ANGLE FRAME
- DOUBLE LEAF CONSTRUCTION
- AUTO-LOCK T-316 STAINLESS STEEL
HOLD OPEN ARM WITH RELEASE HANDLE
- T-316 STAINLESS STEEL HINGES AND ATTACHING HARDWARE
- T-316 STAINLESS STEEL SLAM LOCK WITH REMOVABLE KEY
- STAINLESS STEEL COMPRESSION SPRING ASSIST
- BUILT-IN EPDM CUSHION/GASKET
- NON-OZONE DEPLETING BITUMINOUS COATING
- RECESSED LIFTING HANDLE
- LIFETIME GUARANTEE

STANDARD SIZES

QTY.	MODEL NO.	A DIM INCHES (MM)	C DIM INCHES (MM)	UNIT WT. LBS. (KG)
	S2S4242	42 (1067)	42 (1067)	93 (42)
	S2S4842	48 (1219)	42 (1067)	99 (45)
	S2S4848	48 (1219)	48 (1219)	110 (50)
	S2S5442	54 (1372)	42 (1067)	108 (49)
	S2S5448	54 (1372)	48 (1219)	119 (54)
	S2S5454	54 (1372)	54 (1372)	127 (58)
	S2S6030	60 (1524)	30 (762)	87 (39)
	S2S6036	60 (1524)	36 (914)	100 (45)
	S2S6042	60 (1524)	42 (1067)	115 (52)
	S2S6048	60 (1524)	48 (1219)	130 (59)
	S2S6054	60 (1524)	54 (1372)	143 (65)
	S2S6060	60 (1524)	60 (1524)	158 (72)
	S2S6636	66 (1676)	36 (914)	109 (49)
	S2S6648	66 (1676)	48 (1219)	141 (64)
	S2S7236	72 (1829)	36 (914)	116 (53)
	S2S7242	72 (1829)	42 (1067)	135 (61)
	S2S7248	72 (1829)	48 (1219)	151 (68)
	S2S7254	72 (1829)	54 (1372)	168 (76)
	S2S7260	72 (1829)	60 (1524)	178 (81)



Series W1R Access Door

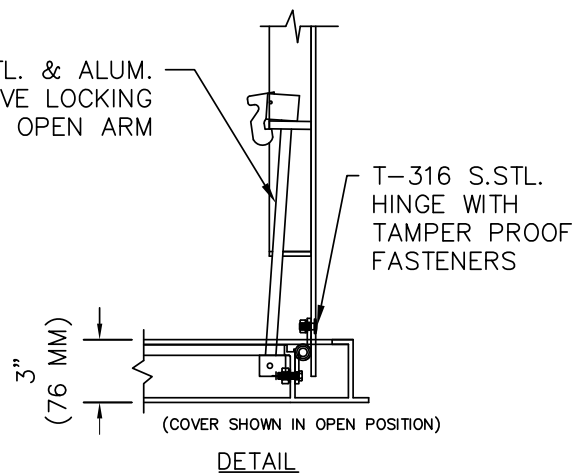
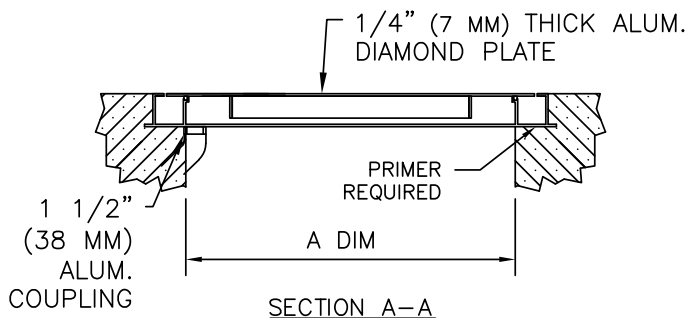
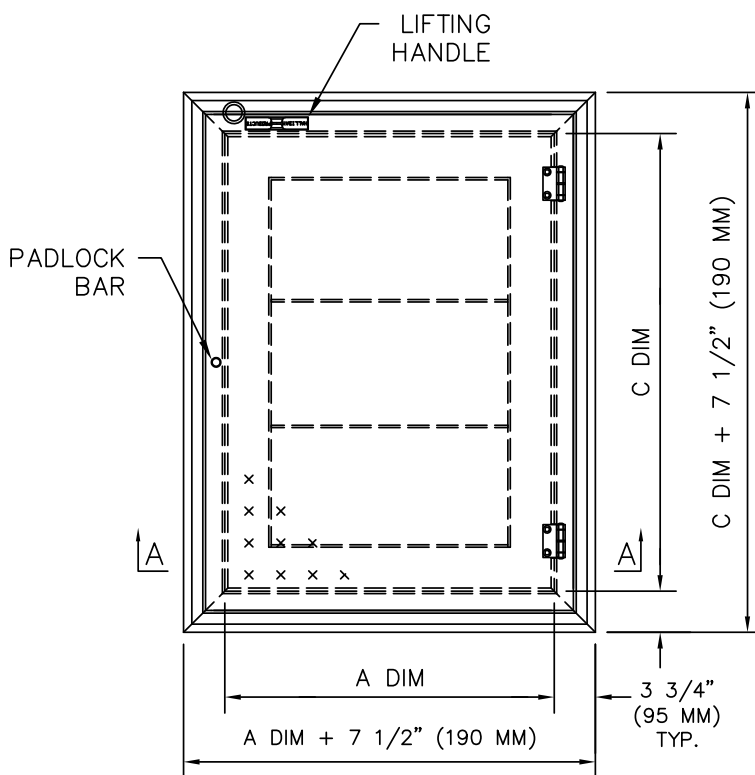


STANDARD FEATURES:

- 300 LBS. PER SQ. FT. LOAD RATING
(1464 KG PER SQ. METER LOAD RATING)
- EXTRUDED ALUMINUM CHANNEL FRAME
- SINGLE LEAF CONSTRUCTION
- AUTO-LOCK T-316 STAINLESS STEEL
HOLD OPEN ARM WITH RELEASE HANDLE
- T-316 STAINLESS STEEL HINGES AND ATTACHING HARDWARE
- NON-CORROSIVE PADLOCK BAR
- RECESSED LIFTING HANDLE
- LIFETIME GUARANTEE

STANDARD SIZES

QTY.	MODEL NO.	A DIM INCHES (MM)	C DIM INCHES (MM)	UNIT WT. LBS. (KG)
	W1R2424	24 (610)	24 (610)	46 (20)
	W1R2430	24 (610)	30 (762)	51 (23)
	W1R2436	24 (610)	36 (914)	61 (28)
	W1R2442	24 (610)	42 (1067)	77 (35)
	W1R2448	24 (610)	48 (1219)	85 (39)
	W1R3030	30 (762)	30 (762)	62 (28)
	W1R3036	30 (762)	36 (914)	69 (31)
	W1R3042	30 (762)	42 (1067)	77 (35)
	W1R3048	30 (762)	48 (1219)	85 (39)
	W1R3054	30 (762)	54 (1372)	99 (45)
	W1R3060	30 (762)	60 (1524)	102 (46)
	W1R3636	36 (914)	36 (914)	78 (35)
	W1R3642	36 (914)	42 (1067)	89 (40)
	W1R3648	36 (914)	48 (1219)	97 (44)
	W1R3654	36 (914)	54 (1372)	107 (49)
	W1R3660	36 (914)	60 (1524)	116 (53)
	W1R3666	36 (914)	66 (1676)	126 (57)
	W1R3672	36 (914)	72 (1829)	135 (61)
	W1R4242	42 (1067)	42 (1067)	108 (49)

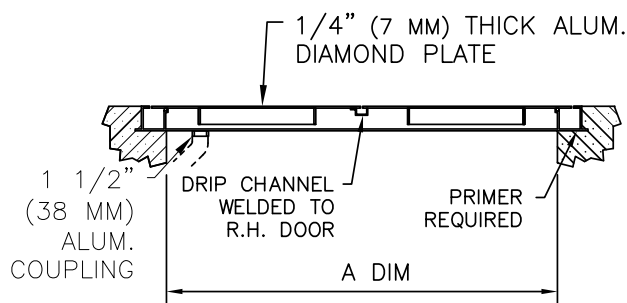
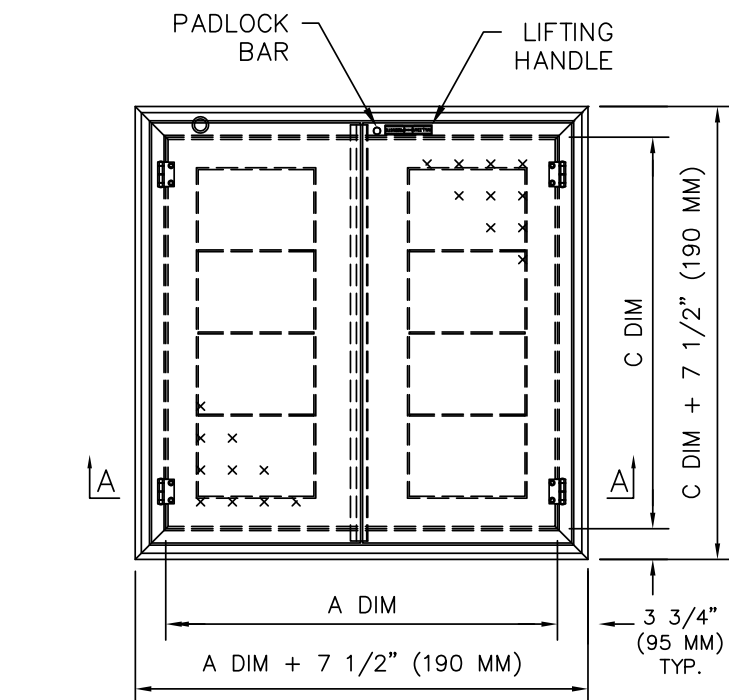


Series W2R Access Door

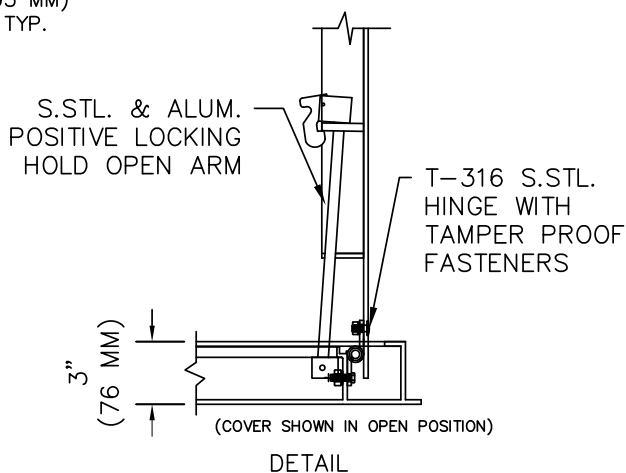


STANDARD FEATURES:

- 300 LBS. PER SQ. FT. LOAD RATING
(1464 KG PER SQ. METER LOAD RATING)
- EXTRUDED ALUMINUM CHANNEL FRAME
- DOUBLE LEAF CONSTRUCTION
- AUTO-LOCK T-316 STAINLESS STEEL
HOLD OPEN ARM WITH RELEASE HANDLE
- T-316 STAINLESS STEEL HINGES AND ATTACHING HARDWARE
- NON-CORROSIVE PADLOCK BAR
- RECESSED LIFTING HANDLE
- LIFETIME GUARANTEE



SECTION A-A



STANDARD SIZES

QTY.	MODEL NO.	A DIM INCHES (MM)	C DIM INCHES (MM)	UNIT WT. LBS. (KG)
	W2R4242	42 (1067)	42 (1067)	108 (48)
	W2R4842	48 (1219)	42 (1067)	115 (52)
	W2R4848	48 (1219)	48 (1219)	126 (57)
	W2R5442	54 (1372)	42 (1067)	124 (56)
	W2R5448	54 (1372)	48 (1219)	136 (62)
	W2R5454	54 (1372)	54 (1372)	149 (68)
	W2R6030	60 (1524)	30 (762)	102 (46)
	W2R6036	60 (1524)	36 (914)	116 (53)
	W2R6042	60 (1524)	42 (1067)	132 (60)
	W2R6048	60 (1524)	48 (1219)	148 (67)
	W2R6054	60 (1524)	54 (1372)	162 (73)
	W2R6060	60 (1524)	60 (1524)	177 (80)
	W2R6636	66 (1676)	36 (914)	126 (57)
	W2R6648	66 (1676)	48 (1219)	160 (73)
	W2R7236	72 (1829)	36 (914)	135 (61)
	W2R7242	72 (1829)	42 (1067)	154 (70)
	W2R7248	72 (1829)	48 (1219)	171 (78)
	W2R7254	72 (1829)	54 (1372)	188 (85)
	W2R7260	72 (1829)	60 (1524)	203 (92)

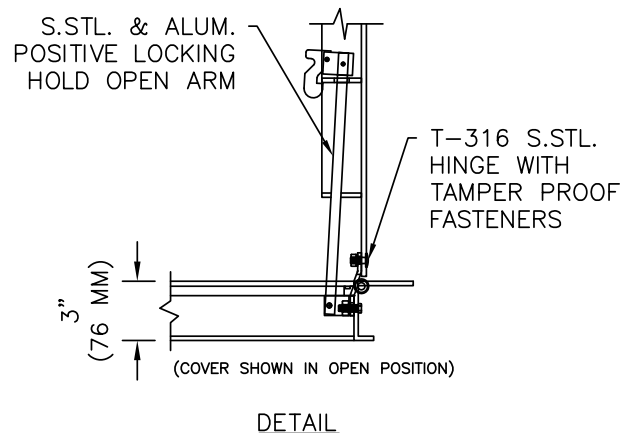
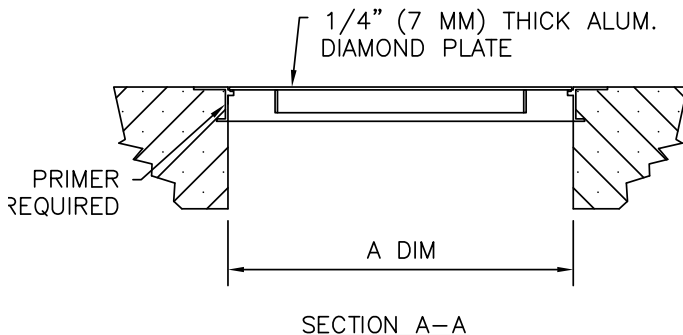
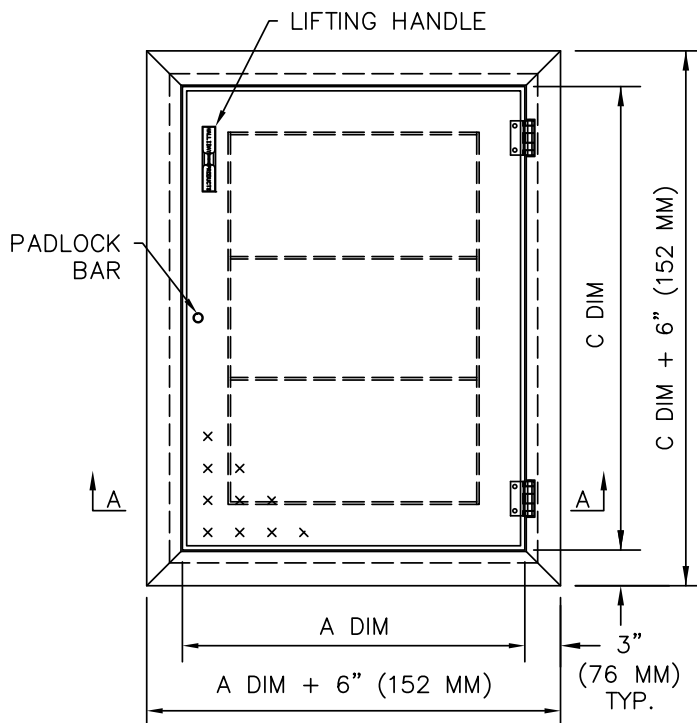
Series S1R Access Door



STANDARD FEATURES:

- 300 LBS. PER SQ. FT. LOAD RATING
(1464 KG PER SQ. METER LOAD RATING)
- EXTRUDED ALUMINUM ANGLE FRAME
- SINGLE LEAF CONSTRUCTION
- AUTO-LOCK T-316 STAINLESS STEEL
HOLD OPEN ARM WITH RELEASE HANDLE
- T-316 STAINLESS STEEL HINGES AND ATTACHING HARDWARE
- NON-CORROSIVE PADLOCK BAR
- RECESSED LIFTING HANDLE
- LIFETIME GUARANTEE

STANDARD SIZES				
QTY.	MODEL NO.	A DIM INCHES (MM)	C DIM INCHES (MM)	UNIT WT. LBS. (KG)
	S1R2424	24 (610)	24 (610)	37 (17)
	S1R2430	24 (610)	30 (762)	42 (19)
	S1R2436	24 (610)	36 (914)	48 (22)
	S1R2442	24 (610)	42 (1067)	55 (25)
	S1R2448	24 (610)	48 (1219)	61 (28)
	S1R3030	30 (762)	30 (762)	49 (22)
	S1R3036	30 (762)	36 (914)	57 (26)
	S1R3042	30 (762)	42 (1067)	64 (29)
	S1R3048	30 (762)	48 (1219)	71 (32)
	S1R3054	30 (762)	54 (1372)	79 (36)
	S1R3060	30 (762)	60 (1524)	87 (39)
	S1R3636	36 (914)	36 (914)	65 (25)
	S1R3642	36 (914)	42 (1067)	79 (36)
	S1R3648	36 (914)	48 (1219)	85 (39)
	S1R3654	36 (914)	54 (1372)	91 (41)
	S1R3660	36 (914)	60 (1524)	100 (45)
	S1R3666	36 (914)	66 (1676)	109 (49)
	S1R3672	36 (914)	72 (1829)	116 (53)
	S1R4242	42 (1067)	42 (1067)	93 (42)



Series S2R Access Door

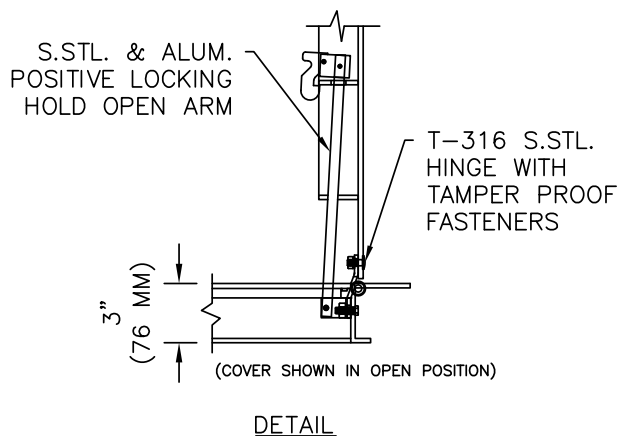
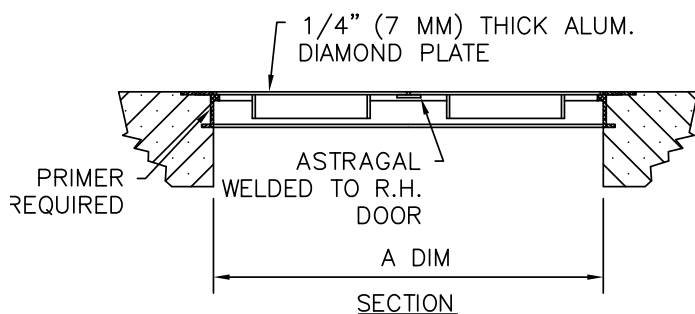
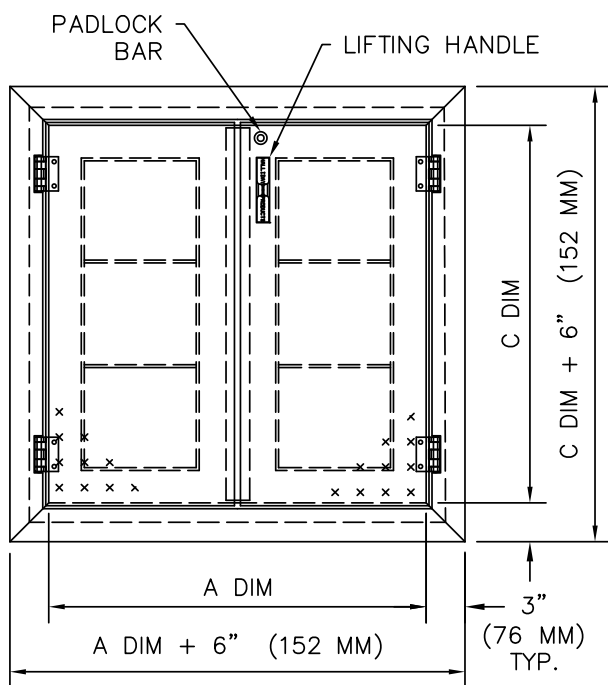


STANDARD FEATURES:

- 300 LBS. PER SQ. FT. LOAD RATING
(1464 KG PER SQ. METER LOAD RATING)
- EXTRUDED ALUMINUM ANGLE FRAME
- DOUBLE LEAF CONSTRUCTION
- AUTO-LOCK T-316 STAINLESS STEEL
HOLD OPEN ARM WITH RELEASE HANDLE
- T-316 STAINLESS STEEL HINGES AND ATTACHING HARDWARE
- NON-CORROSIVE PADLOCK BAR
- RECESSED LIFTING HANDLE
- LIFETIME GUARANTEE

STANDARD SIZES

QTY.	MODEL NO.	A DIM INCHES (MM)	C DIM INCHES (MM)	UNIT WT. LBS. (KG)
	S2R4242	42 (1067)	42 (1067)	93 (42)
	S2R4842	48 (1219)	42 (1067)	99 (45)
	S2R4848	48 (1219)	48 (1219)	110 (50)
	S2R5442	54 (1372)	42 (1067)	108 (49)
	S2R5448	54 (1372)	48 (1219)	119 (54)
	S2R5454	54 (1372)	54 (1372)	127 (58)
	S2R6030	60 (1524)	30 (762)	87 (39)
	S2R6036	60 (1524)	36 (914)	100 (45)
	S2R6042	60 (1524)	42 (1067)	115 (52)
	S2R6048	60 (1524)	48 (1219)	130 (59)
	S2R6054	60 (1524)	54 (1372)	143 (65)
	S2R6060	60 (1524)	60 (1524)	158 (72)
	S2R6636	66 (1676)	36 (914)	109 (49)
	S2R6648	66 (1676)	48 (1219)	141 (64)
	S2R7236	72 (1829)	36 (914)	116 (53)
	S2R7242	72 (1829)	42 (1067)	135 (61)
	S2R7248	72 (1829)	48 (1219)	151 (68)
	S2R7254	72 (1829)	54 (1372)	168 (76)
	S2R7260	72 (1829)	60 (1524)	178 (81)



Series C1R Access Door



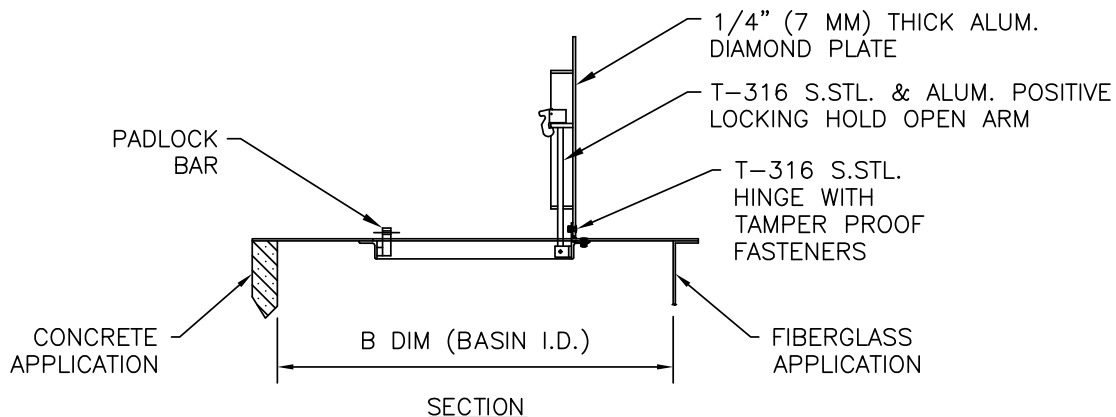
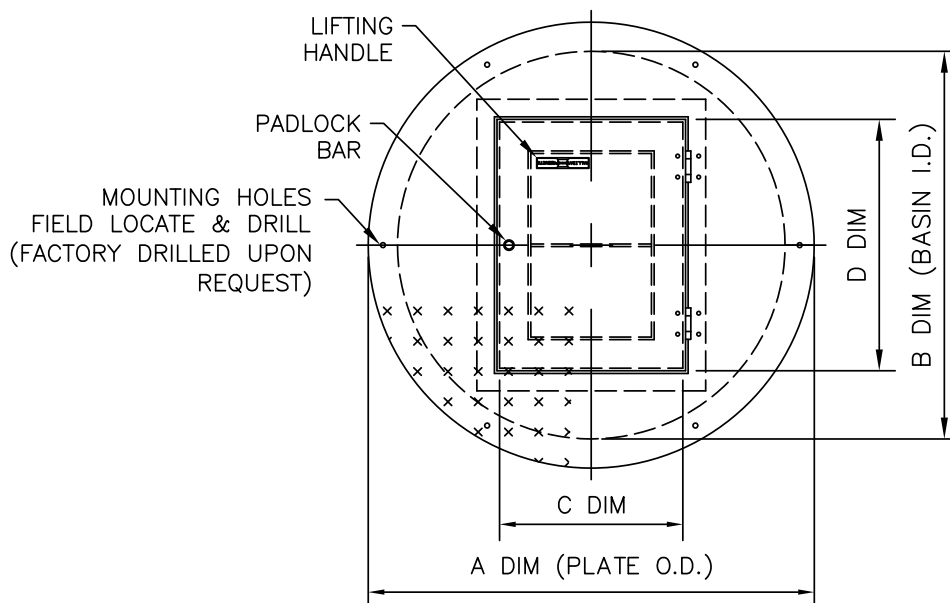
STANDARD FEATURES:

- 300 LBS. PER SQ. FT. LOAD RATING
(1464 KG PER SQ. METER LOAD RATING)
- SINGLE LEAF CONSTRUCTION (ADDITIONAL LEAVES OPTIONAL)
- AUTO-LOCK T-316 STAINLESS STEEL HOLD OPEN ARM WITH RELEASE HANDLE
- T-316 STAINLESS STEEL HINGES AND ATTACHING HARDWARE
- NON-CORROSIVE PADLOCK BAR
- VENT COUPLING & MOUNTING HOLES UPON REQUEST
- RECESSED LIFTING HANDLE
- LIFETIME GUARANTEE
- LARGER SIZES AVAILABLE
- ALSO AVAILABLE FOR RECTANGULAR BASINS

STANDARD SIZES						
QTY.	MODEL NO.	A DIM INCHES (MM)	B DIM INCHES (MM)	C DIM INCHES (MM)	D DIM INCHES (MM)	UNIT WT. LBS. (KG)
	C1R40	40 (1016)	36 (914)			45 (20)
	C1R52	52 (1320)	48 (1219)			80 (36)
	C1R64	64 (1626)	60 (1524)			125 (57)
	C1R76	76 (1930)	72 (1829)			180 (82)

NOTES:

- 1) WHEN MOUNTING ON CONCRETE ADD A MINIMUM OF 2" TO THE "A" DIMENSION TO ENSURE PROPER EDGE DISTANCE FOR ANCHOR BOLTS (ANCHORS BY OTHERS)
- 2) C & D DIMENSIONS SIZED AS REQUIRED



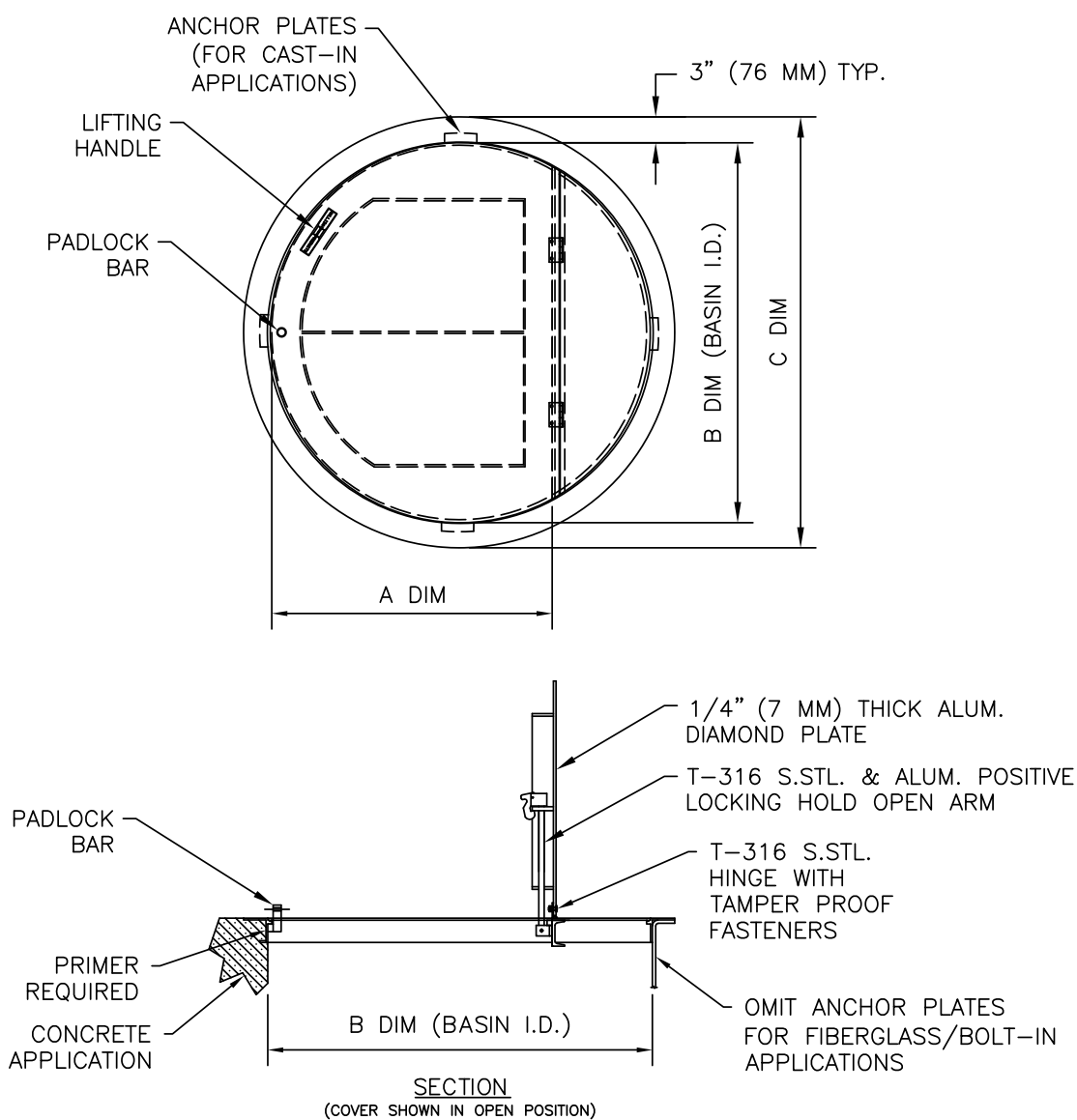
Series R1R Access Door



STANDARD FEATURES:

- 300 LBS. PER SQ. FT. LOAD RATING (1464 KG PER SQ. METER LOAD RATING)
- EXTRUDED ALUMINUM ANGLE FRAME
- SINGLE LEAF CONSTRUCTION FOR MAXIMUM ACCESS (TWO LEAF OPTIONAL)
- AUTO-LOCK T-316 STAINLESS STEEL HOLD OPEN ARM WITH RELEASE HANDLE
- T-316 STAINLESS STEEL HINGES AND ATTACHING HARDWARE
- NON-CORROSIVE PADLOCK BAR
- ANCHOR PLATES (ORDER WITHOUT FOR FIBERGLASS OR BOLT-IN APPLICATIONS)
- RECESSED LIFTING HANDLE
- LIFETIME GUARANTEE
- LARGER SIZES AVAILABLE

STANDARD SIZES					
QTY.	MODEL NO.	A DIM INCHES (MM)	B DIM INCHES (MM)	C DIM INCHES (MM)	UNIT WT. LBS. (KG)
	R1R36	24 (610)	36 (914)	42 (1067)	62 (28)
	R1R48	32 (813)	48 (1219)	54 (1372)	86 (39)
	R1R60	40 (1016)	60 (1524)	66 (1676)	136 (62)
	R1R72	48 (1219)	72 (1829)	78 (1981)	175 (79)

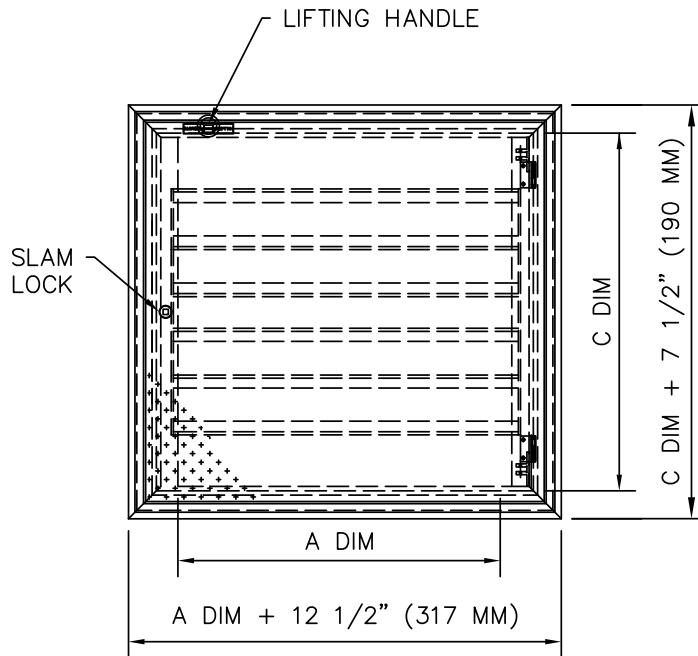


Series H1W Access Door



STANDARD FEATURES:

- H20 LOAD RATING (SEE NOTES)
- EXTRUDED ALUMINUM CHANNEL FRAME
- SINGLE LEAF CONSTRUCTION
- AUTO-LOCK T-316 STAINLESS STEEL HOLD OPEN ARM WITH RELEASE HANDLE
- T-316 STAINLESS STEEL HINGES AND ATTACHING HARDWARE
- T-316 STAINLESS STEEL SLAM LOCK WITH REMOVABLE KEY
- STAINLESS STEEL COMPRESSION SPRING ASSIST
- RECESSED LIFTING HANDLE
- LIFETIME GUARANTEE

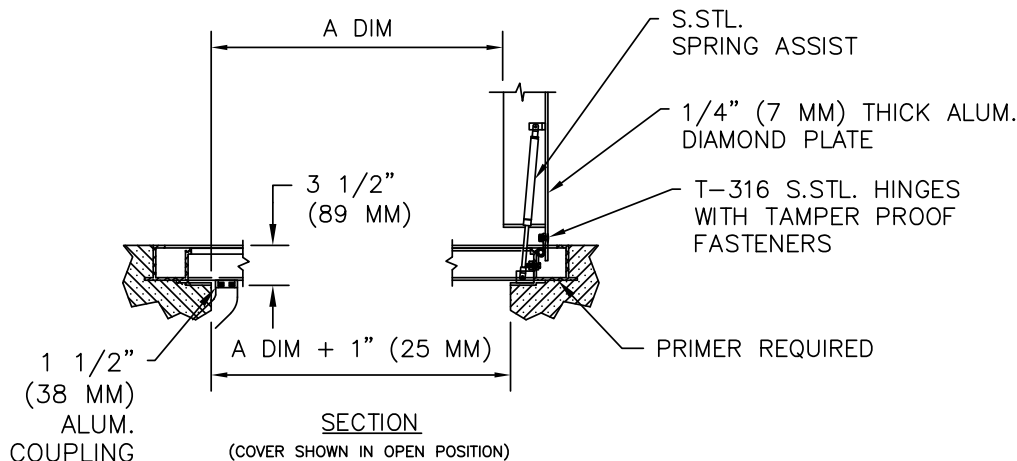


STANDARD SIZES				
QTY.	MODEL NO.	A DIM INCHES (MM)	C DIM INCHES (MM)	UNIT WT. LBS. (KG)
	H1W2424	24 (610)	24 (610)	72 (33)
	H1W2430	24 (610)	30 (762)	90 (41)
	H1W2436	24 (610)	36 (914)	108 (49)
	H1W2442	24 (610)	42 (1067)	126 (57)
	H1W3030	30 (762)	30 (762)	113 (51)
	H1W3036	30 (762)	36 (914)	135 (61)
	H1W3042	30 (762)	42 (1067)	158 (72)
	H1W3048	30 (762)	48 (1219)	180 (82)
	H1W3636	36 (914)	36 (914)	162 (73)
	H1W3642	36 (914)	42 (1067)	189 (86)
	H1W3648	36 (914)	48 (1219)	216 (98)

NOTES:

1) SUITABLE FOR USE IN OFF STREET LOCATION WHERE NOT SUBJECTED TO HIGH DENSITY TRAFFIC.

2) PROVIDE A FULL BED OF CLASS "A" CONCRETE UNDER FRAME AND SUPPORT ANGLES.

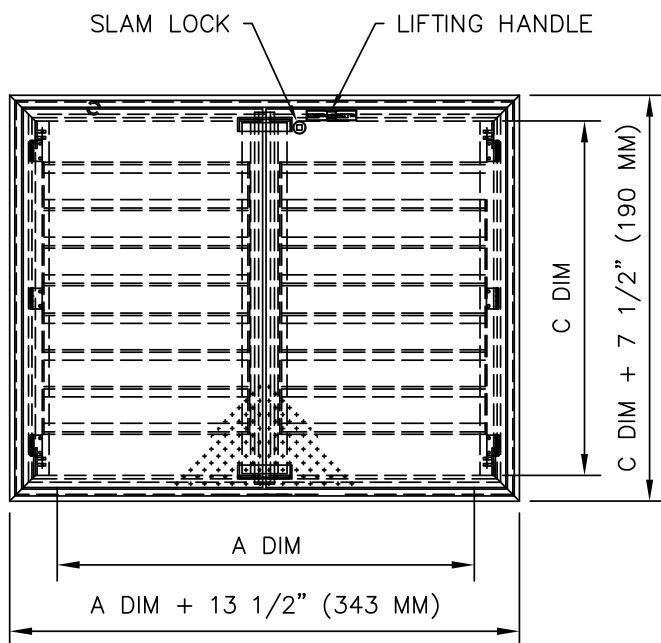


Series H2W Access Door



STANDARD FEATURES:

- H20 LOAD RATING (SEE NOTES)
- EXTRUDED ALUMINUM CHANNEL FRAME
- DOUBLE LEAF CONSTRUCTION
- AUTO-LOCK T-316 STAINLESS STEEL HOLD OPEN ARM WITH RELEASE HANDLE
- T-316 STAINLESS STEEL HINGES AND ATTACHING HARDWARE
- T-316 STAINLESS STEEL SLAM LOCK WITH REMOVABLE KEY
- STAINLESS STEEL COMPRESSION SPRING ASSIST
- RECESSED LIFTING HANDLE
- LIFETIME GUARANTEE

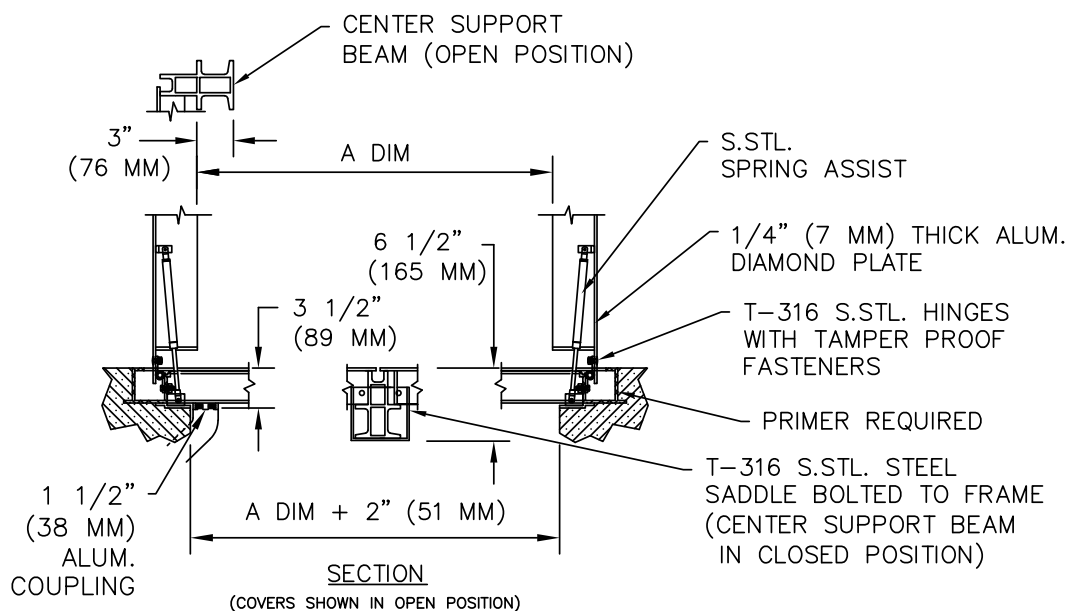


STANDARD SIZES				
QTY.	MODEL NO.	A DIM INCHES (MM)	C DIM INCHES (MM)	UNIT WT. LBS. (KG)
	H2W4242	42 (1067)	42 (1067)	223 (101)
	H2W4842	48 (1219)	42 (1067)	238 (108)
	H2W4848	48 (1219)	48 (1219)	263 (119)
	H2W5442	54 (1372)	42 (1067)	252 (114)
	H2W5448	54 (1372)	48 (1219)	284 (129)
	H2W6048	60 (1524)	48 (1219)	300 (136)
	H2W6060	60 (1524)	60 (1524)	373 (169)
	H2W7248	72 (1829)	48 (1219)	341 (155)
	H2W7260	72 (1829)	60 (1524)	413 (187)
	H2W7272	72 (1829)	72 (1829)	504 (229)

NOTES:

1) SUITABLE FOR USE IN OFF STREET LOCATION WHERE NOT SUBJECTED TO HIGH DENSITY TRAFFIC.

2) PROVIDE A FULL BED OF CLASS "A" CONCRETE UNDER FRAME AND SUPPORT ANGLES.

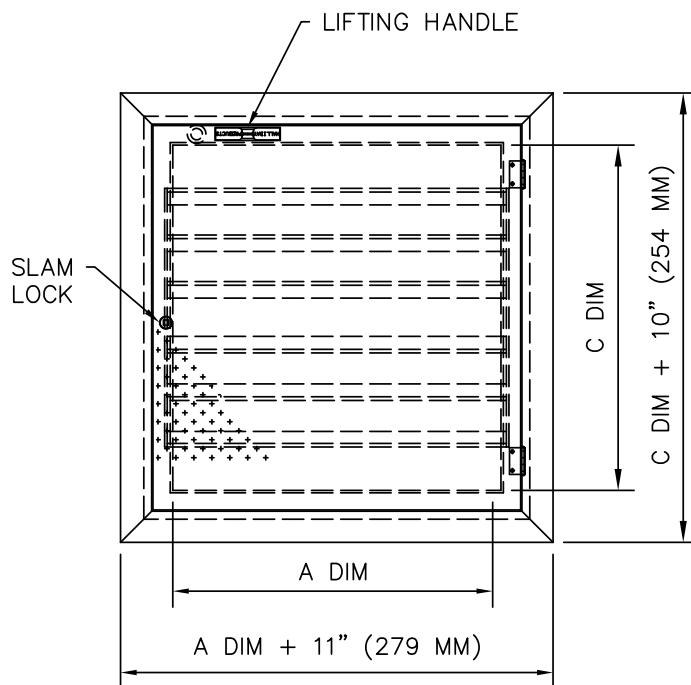


Series H1C Access Door



STANDARD FEATURES:

- H20 LOAD RATING (SEE NOTES)
- EXTRUDED ALUMINUM CHANNEL FRAME
- SINGLE LEAF CONSTRUCTION
- AUTO-LOCK T-316 STAINLESS STEEL HOLD OPEN ARM WITH RELEASE HANDLE
- T-316 STAINLESS STEEL HINGES AND ATTACHING HARDWARE
- T-316 STAINLESS STEEL SLAM LOCK WITH REMOVABLE KEY
- STAINLESS STEEL COMPRESSION SPRING ASSIST
- RECESSED LIFTING HANDLE
- LIFETIME GUARANTEE

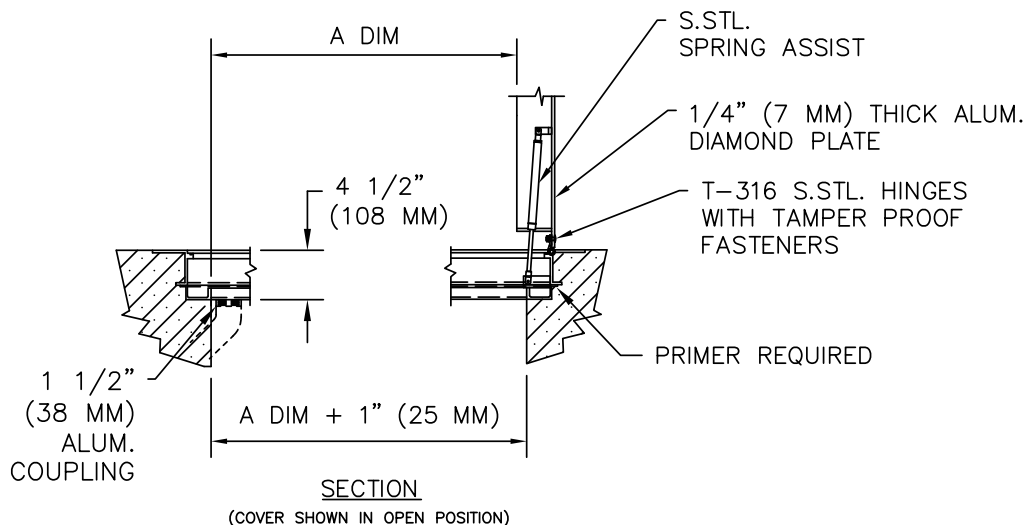


STANDARD SIZES				
QTY.	MODEL NO.	A DIM INCHES (MM)	C DIM INCHES (MM)	UNIT WT. LBS. (KG)
	H1C2424	24 (610)	24 (610)	85 (39)
	H1C2430	24 (610)	30 (762)	100 (45)
	H1C2436	24 (610)	36 (914)	115 (52)
	H1C2442	24 (610)	42 (1067)	130 (59)
	H1C3030	30 (762)	30 (762)	108 (49)
	H1C3036	30 (762)	36 (914)	124 (56)
	H1C3042	30 (762)	42 (1067)	140 (64)
	H1C3048	30 (762)	48 (1219)	157 (71)
	H1C3636	36 (914)	36 (914)	134 (61)
	H1C3642	36 (914)	42 (1067)	151 (68)
	H1C3648	36 (914)	48 (1219)	166 (75)

NOTES:

1) SUITABLE FOR USE IN OFF STREET LOCATION WHERE NOT SUBJECTED TO HIGH DENSITY TRAFFIC.

2) PROVIDE A FULL BED OF CLASS "A" CONCRETE UNDER FRAME AND SUPPORT ANGLES.

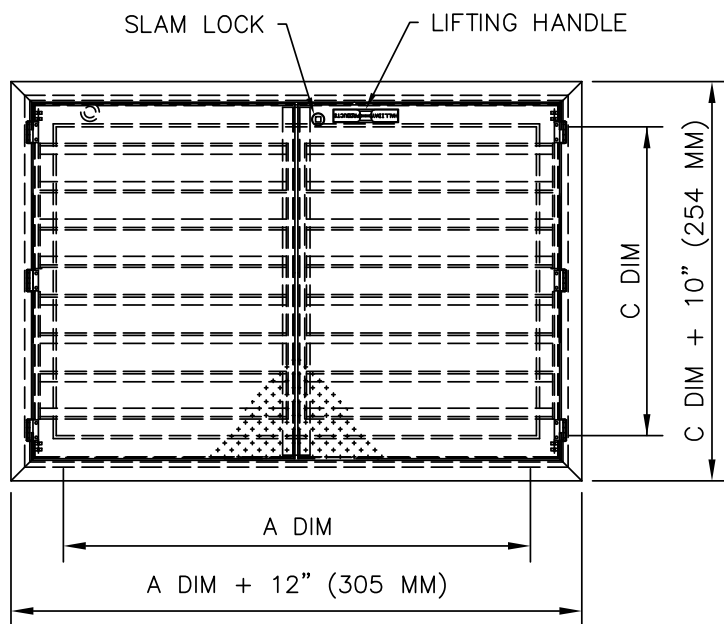


Series H2C Access Door



STANDARD FEATURES:

- H20 LOAD RATING (SEE NOTES)
- EXTRUDED ALUMINUM CHANNEL FRAME
- DOUBLE LEAF CONSTRUCTION
- AUTO-LOCK T-316 STAINLESS STEEL HOLD OPEN ARM WITH RELEASE HANDLE
- T-316 STAINLESS STEEL HINGES AND ATTACHING HARDWARE
- T-316 STAINLESS STEEL SLAM LOCK WITH REMOVABLE KEY
- STAINLESS STEEL COMPRESSION SPRING ASSIST
- RECESSED LIFTING HANDLE
- LIFETIME GUARANTEE



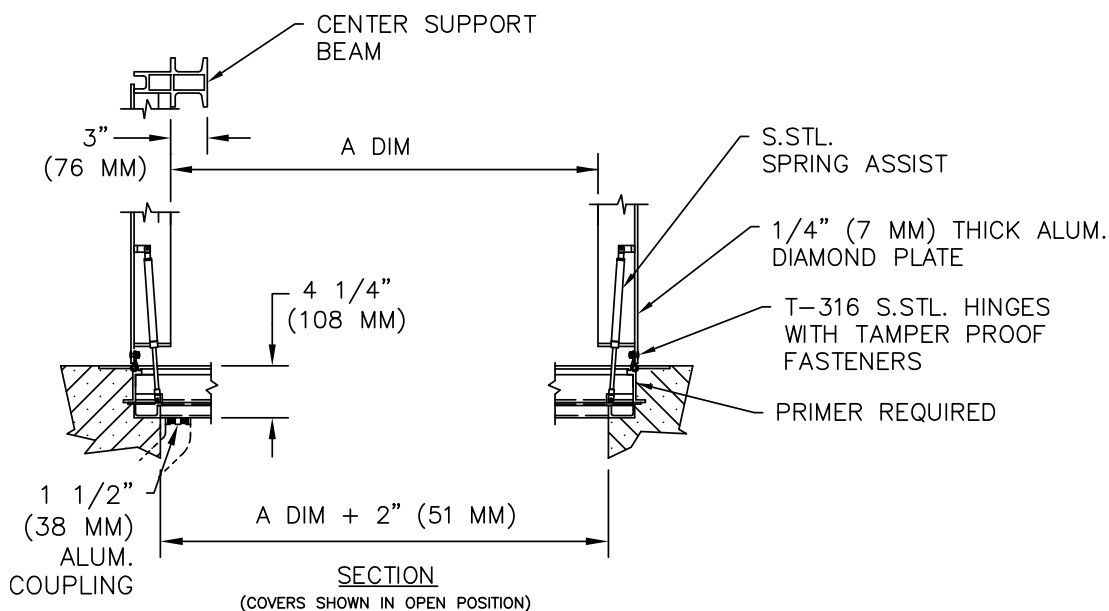
STANDARD SIZES

QTY.	MODEL NO.	A DIM. INCHES (mm)	C DIM. INCHES (mm)	UNIT WT. LBS. (kg.)
	H2C4242	42 (1067)	42 (1067)	260 (118)
	H2C4842	48 (1219)	42 (1067)	289 (131)
	H2C4848	48 (1219)	48 (1219)	323 (147)
	H2C5442	54 (1372)	42 (1067)	318 (144)
	H2C5448	54 (1372)	48 (1219)	355 (161)
	H2C6048	60 (1524)	48 (1219)	367 (166)
	H2C6060	60 (1524)	60 (1524)	429 (195)
	H2C7248	72 (1829)	48 (1219)	400 (181)
	H2C7260	72 (1829)	60 (1524)	483 (219)
	H2C7272	72 (1829)	72 (1829)	566 (257)

NOTES:

1) SUITABLE FOR USE IN OFF STREET LOCATION WHERE NOT SUBJECTED TO HIGH DENSITY TRAFFIC.

2) PROVIDE A FULL BED OF CLASS "A" CONCRETE UNDER FRAME AND SUPPORT ANGLES.

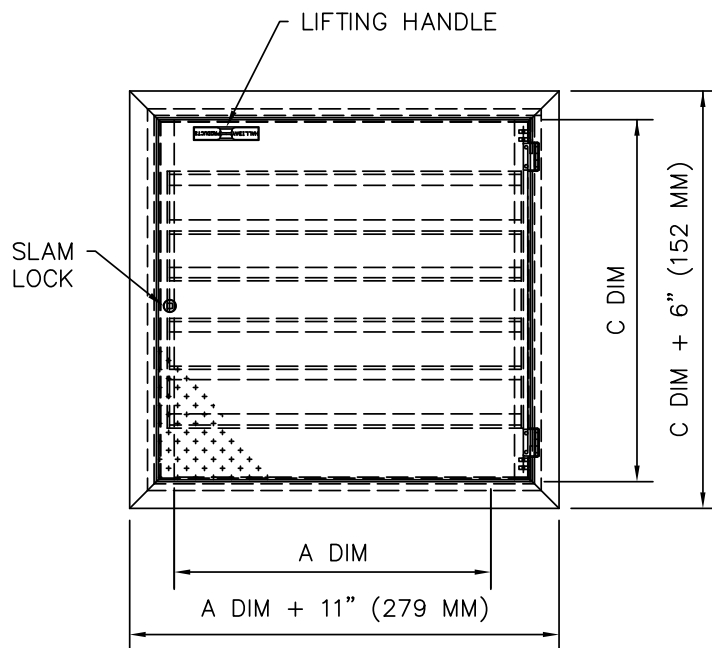


Series H1R Access Door



STANDARD FEATURES:

- H20 LOAD RATING (SEE NOTES)
- EXTRUDED ALUMINUM ANGLE FRAME
- SINGLE LEAF CONSTRUCTION
- AUTO-LOCK T-316 STAINLESS STEEL HOLD OPEN ARM WITH RELEASE HANDLE
- T-316 STAINLESS STEEL HINGES AND ATTACHING HARDWARE
- T-316 STAINLESS STEEL SLAM LOCK WITH REMOVABLE KEY
- STAINLESS STEEL COMPRESSION SPRING ASSIST
- RECESSED LIFTING HANDLE
- LIFETIME GUARANTEE

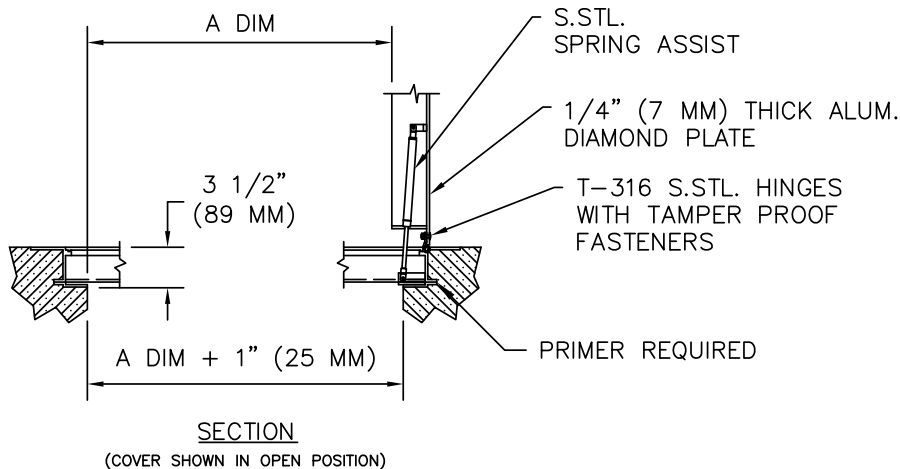


STANDARD SIZES				
QTY.	MODEL NO.	A DIM. INCHES (MM)	C DIM. INCHES (MM)	UNIT WT. LBS. (KG)
	H1R2424	24 (610)	24 (610)	60 (27)
	H1R2430	24 (610)	30 (762)	75 (34)
	H1R2436	24 (610)	36 (914)	90 (41)
	H1R2442	24 (610)	42 (1067)	105 (48)
	H1R3030	30 (762)	30 (762)	94 (43)
	H1R3036	30 (762)	36 (914)	113 (51)
	H1R3042	30 (762)	42 (1067)	131 (59)
	H1R3048	30 (762)	48 (1219)	150 (68)
	H1R3636	36 (914)	36 (914)	135 (61)
	H1R3642	36 (914)	42 (1067)	158 (72)
	H1R3648	36 (914)	48 (1219)	180 (82)

NOTES:

1) SUITABLE FOR USE IN OFF STREET LOCATION WHERE NOT SUBJECTED TO HIGH DENSITY TRAFFIC.

2) PROVIDE A FULL BED OF CLASS "A" CONCRETE UNDER FRAME AND SUPPORT ANGLES.

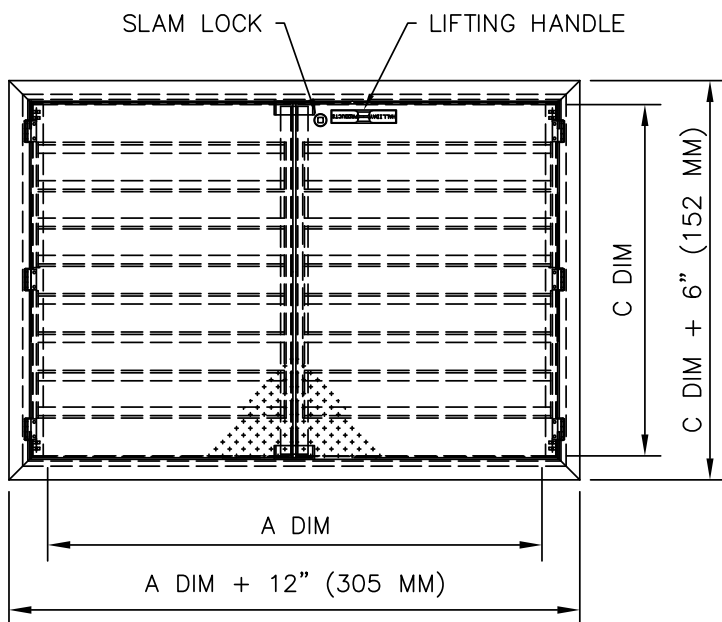


Series H2R Access Door



STANDARD FEATURES:

- H20 LOAD RATING (SEE NOTES)
- EXTRUDED ALUMINUM ANGLE FRAME
- DOUBLE LEAF CONSTRUCTION
- AUTO-LOCK T-316 STAINLESS STEEL HOLD OPEN ARM WITH RELEASE HANDLE
- T-316 STAINLESS STEEL HINGES AND ATTACHING HARDWARE
- T-316 STAINLESS STEEL SLAM LOCK WITH REMOVABLE KEY
- STAINLESS STEEL COMPRESSION SPRING ASSIST
- RECESSED LIFTING HANDLE
- LIFETIME GUARANTEE



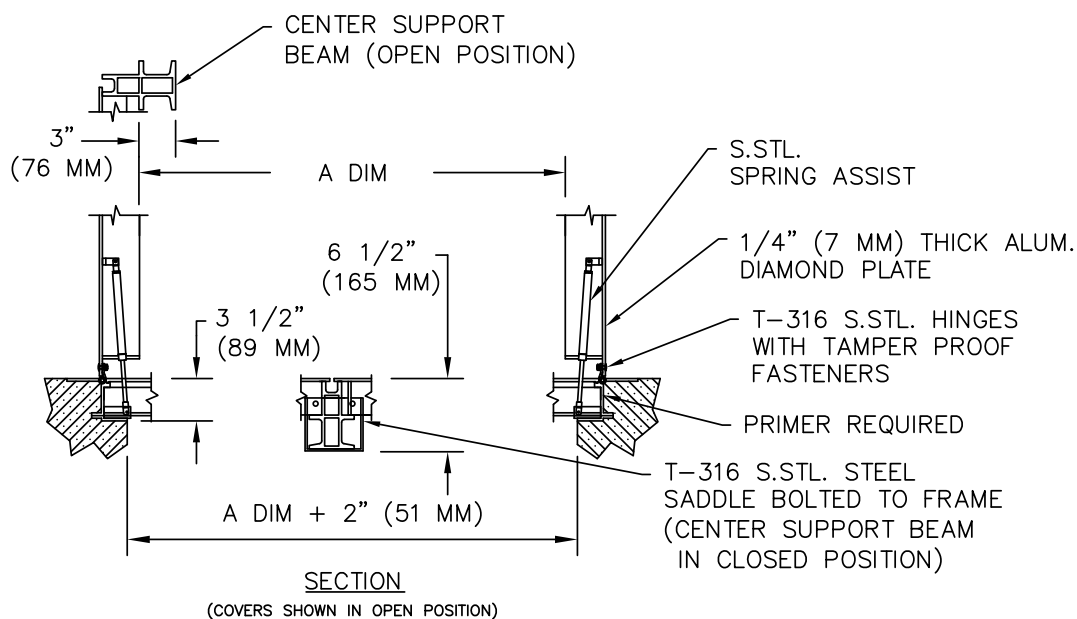
STANDARD SIZES

QTY.	MODEL NO.	A DIM INCHES (MM)	C DIM INCHES (MM)	UNIT WT. LBS. (KG)
	H2R4242	42 (1067)	42 (1067)	198 (90)
	H2R4842	48 (1219)	42 (1067)	217 (98)
	H2R4848	48 (1219)	48 (1219)	235 (107)
	H2R5442	54 (1372)	42 (1067)	228 (103)
	H2R5448	54 (1372)	48 (1219)	257 (117)
	H2R6048	60 (1524)	48 (1219)	268 (122)
	H2R6060	60 (1524)	60 (1524)	339 (154)
	H2R7248	72 (1829)	48 (1219)	305 (138)
	H2R7260	72 (1829)	60 (1524)	374 (170)
	H2R7272	72 (1829)	72 (1829)	449 (204)

NOTES:

1) SUITABLE FOR USE IN OFF STREET LOCATION WHERE NOT SUBJECTED TO HIGH DENSITY TRAFFIC.

2) PROVIDE A FULL BED OF CLASS "A" CONCRETE UNDER FRAME AND SUPPORT ANGLES.



Series F1R Access Door

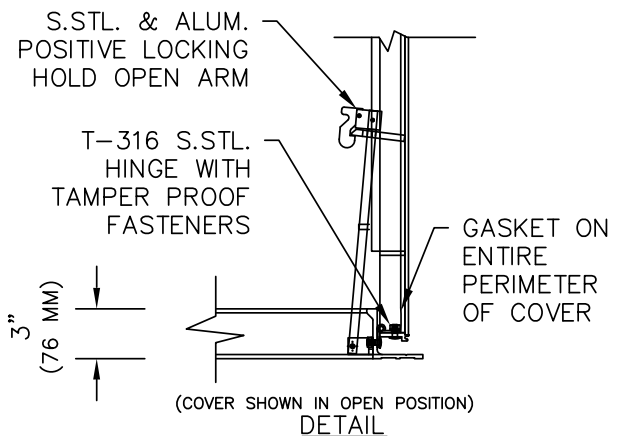
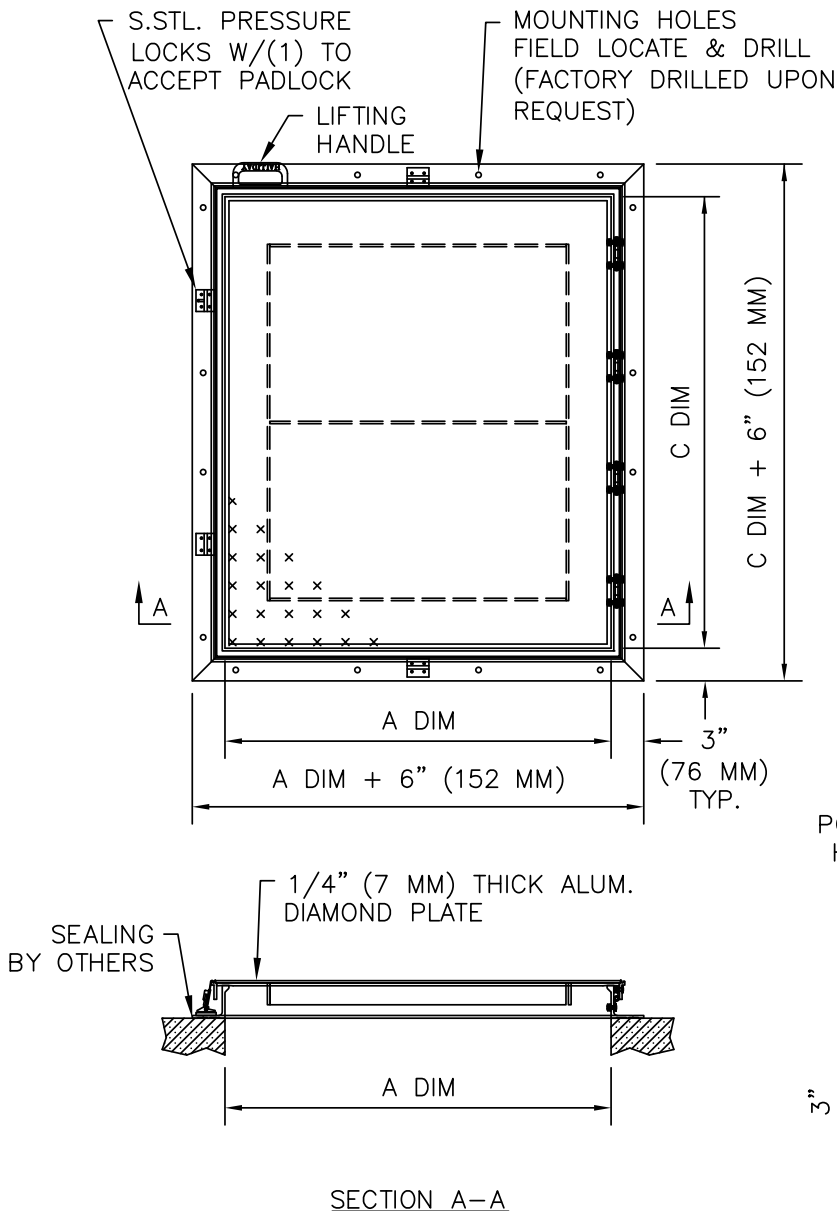


STANDARD FEATURES:

- 625 LBS. PER SQ. FT. LOAD RATING
(3051 KG PER SQ. METER LOAD RATING)
- FLOODTIGHT UP TO 10FT COLUMN OF WATER
- EXTRUDED ALUMINUM ANGLE FRAME
- AUTO-LOCK T-316 STAINLESS STEEL HOLD OPEN ARM WITH RELEASE HANDLE
- TYPE-316 STAINLESS STEEL HINGES AND ATTACHING HARDWARE
- STAINLESS STEEL PRESSURE LOCKS
- 1/4" (7 MM) X 1 1/2" (38 MM) EPDM/NEOPRENE GASKET
- PADLOCK LUG
- SINGLE LEAF CONSTRUCTION
- LIFETIME GUARANTEE

STANDARD SIZES

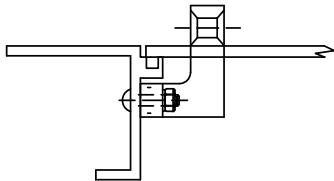
QTY.	MODEL NO.	A DIM. INCHES (MM)	C DIM. INCHES (MM)	UNIT WT. LBS. (KG)
	F1R2424	24 (610)	24 (610)	46 (21)
	F1R2430	24 (610)	30 (762)	51 (23)
	F1R2436	24 (610)	36 (914)	61 (28)
	F1R2442	24 (610)	42 (1067)	77 (35)
	F1R2448	24 (610)	48 (1219)	85 (39)
	F1R3030	30 (762)	30 (762)	54 (24)
	F1R3036	30 (762)	36 (914)	69 (31)
	F1R3042	30 (762)	42 (1067)	77 (35)
	F1R3048	30 (762)	48 (1219)	85 (39)
	F1R3054	30 (762)	54 (1372)	99 (45)
	F1R3060	30 (762)	60 (1524)	106 (48)
	F1R3636	36 (914)	36 (914)	70 (32)
	F1R3642	36 (914)	42 (1067)	89 (40)
	F1R3648	36 (914)	48 (1219)	97 (44)
	F1R3654	36 (914)	54 (1372)	107 (49)
	F1R3660	36 (914)	60 (1524)	104 (47)
	F1R3666	36 (914)	66 (1676)	126 (57)
	F1R3672	36 (914)	72 (1829)	135 (61)



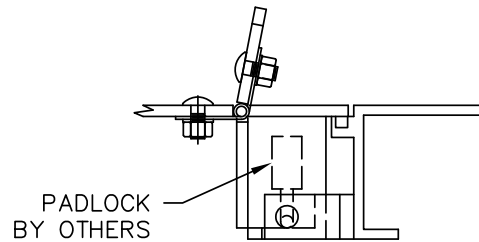
Access Cover Popular Options



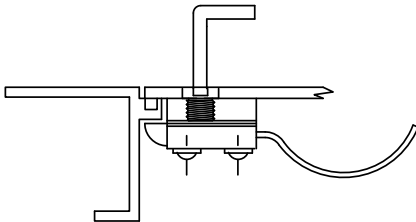
HALLIDAY PRODUCTS OFFERS A VARIETY OF OPTIONS FOR OUR EXTENSIVE LINE OF QUALITY ACCESS FRAMES AND COVERS. PLEASE CONSULT FACTORY IF YOUR APPLICATION REQUIRES AN OPTION THAT IS NOT SHOWN.



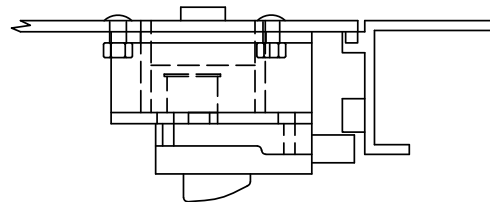
PADLOCK BAR



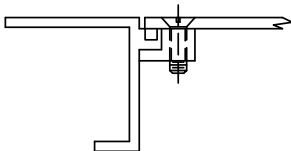
RECESSED LOCK BOX



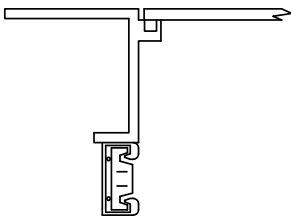
SLAM LOCK



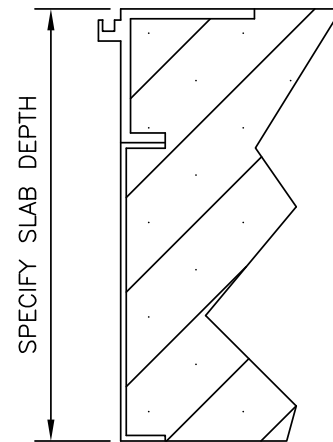
KEYED CYLINDER LOCK



BOLT DOWN FEATURE



NUTRAIL



SLAB SKIRTING

Optional Protective Grating Panel



STANDARD FEATURES:

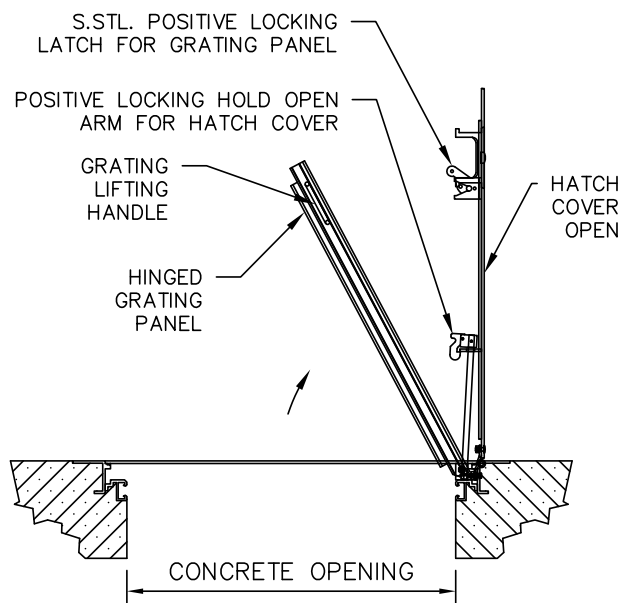
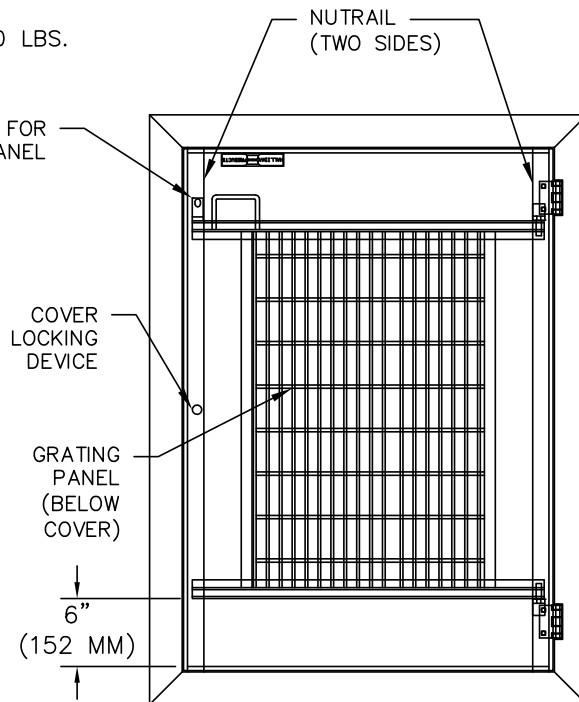
- ALUMINUM "I" BAR CONSTRUCTION
- ALL T-316 STAINLESS STEEL HARDWARE
- LOCKABLE WITH OWNER-SUPPLIED PADLOCK
- HINGED WITH POSITIVE LATCH TO MAINTAIN UPRIGHT POSITION
- LOAD RATED CONSISTENT WITH ACCESS COVER
- VIEW AREA FOR OBSERVATION AND LIMITED MAINTENANCE
- SAFETY ORANGE POWDER-COATED FINISH
- NUTRAIL W/S.TL. SPRING NUTS (INCLUDED ON 300 LBS. PSF (1464 KG PSM) RATED HATCHES ONLY)
- LIFETIME GUARANTEE

APPLICATIONS:

THE OPTIONAL PROTECTIVE GRATING PANEL SHOULD BE SPECIFIED FOR APPLICATIONS IN AREAS THAT REQUIRE ADDITIONAL PROTECTION SHOULD THE ACCESS COVER BE LEFT IN THE OPEN POSITION. THIS OPTION SHOULD ALSO BE CONSIDERED WHEN A SINGLE PERSON INSPECTION OF WET WELLS IS DESIRABLE. THE GRATING PANEL HAS PROVISIONS FOR AN OWNER-SUPPLIED PADLOCK THAT WOULD PROVIDE SECONDARY PROTECTION AGAINST UNAUTHORIZED PERSONNEL OPENING THE ACCESS COVER. THIS OPTION IS NOT AVAILABLE FOR ALL ACCESS COVERS MODELS. PLEASE CONSULT THE FACTORY.

HALLIDAY PRODUCTS OPTIONAL PROTECTIVE GRATING PANEL IS EQUIPPED WITH ALL T-316 STAINLESS STEEL HARDWARE. THIS LOCKABLE GRATING PANEL CAN BE FACTORY INSTALLED ON MOST MODELS IN OUR EXTENSIVE LINE OF QUALITY ACCESS COVERS. EACH GRATING PANEL IS POWDER COAT FINISHED IN SAFETY ORANGE COLOR, AND IS EQUIPPED WITH A T-316 STAINLESS STEEL POSITIVE LATCH WITH RELEASE HANDLE THAT SECURES THE GRATING PANEL IN THE OPEN POSITION. THE GRATING SUPPORT LEDGES FEATURE BUILT-IN NUTRAIL. EACH UNIT IS SUPPLIED WITH FOUR STAINLESS STEEL SPRING NUTS USED TO MOUNT PUMP BRACKETS AND CABLE HOLDERS.

- CONSULT FACTORY FOR ALL PRICING
- FOR ADDITIONAL INFORMATION VISIT US AT:
www.HallidayProducts.com



GRATING OPTION RO



**MODEL F1H
Floodtight**

- EDPM Compression Gasket
- Flush Mount Design
- Spring Assist
- Stainless Steel Locks
- Warranty: Lifetime



MADE IN THE USA


NEW FLUSH MOUNT FLOODTIGHT PROTECTION

When waters rise, Halliday has you covered.

Halliday Products has done it again – from EDPM compression gaskets to multiple stainless steel cam locks and more, our new floodtight designs offer the strongest, most reliable aluminum and stainless steel features on the market.

A trusted industry leader since 1972.

A trusted industry leader since 1972, the Halliday Products name has become synonymous with quality metal products for the municipal and wastewater treatment industries. Call us today and experience the difference.



**SUPPORTS
25 FT.
OF WATER**



HP

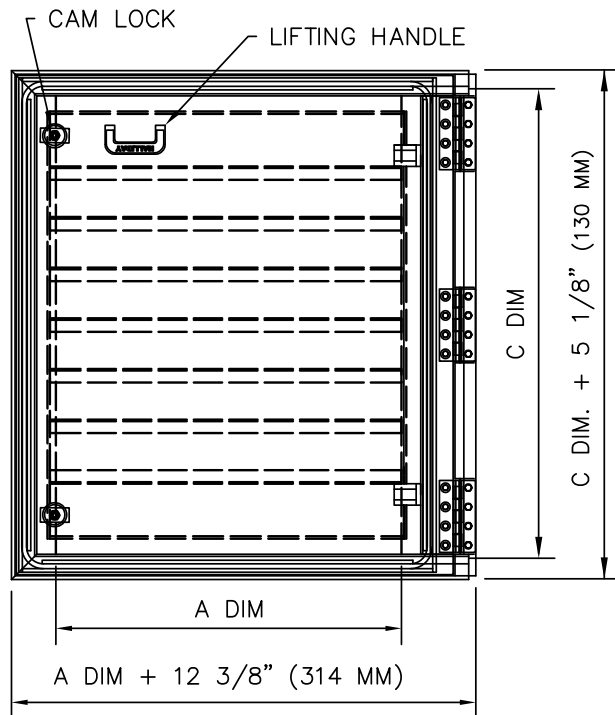
HALLIDAY PRODUCTS

Series F1H Floodtight Covers



STANDARD FEATURES:

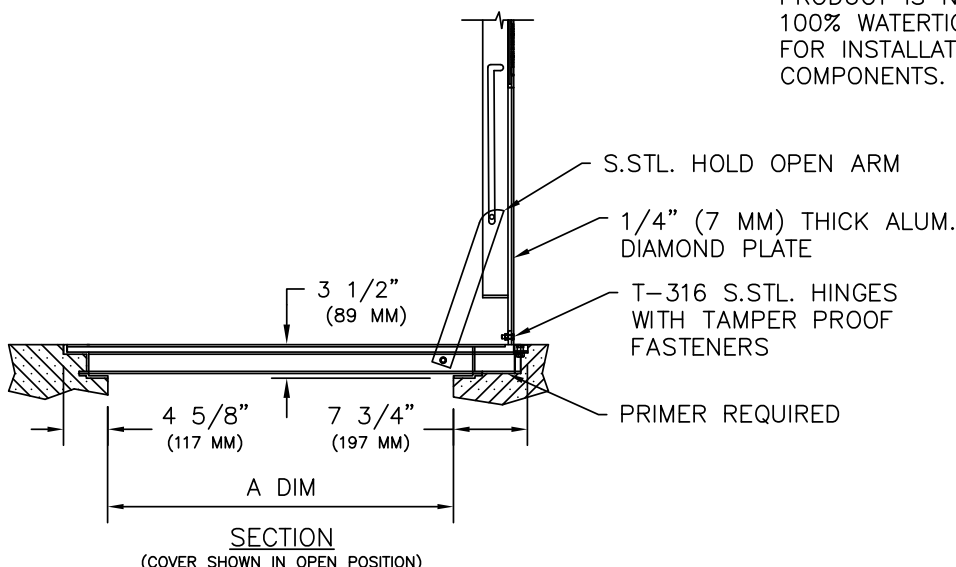
- FLOODTIGHT/ODOR TIGHT UP TO 25FT COLUMN OF WATER (H-20 LOAD RATING)
- EXTRUDED ALUMINUM FRAME
- AUTO-LOCK T-316 STAINLESS STEEL HOLD OPEN ARM WITH RELEASE HANDLE
- TYPE-316 STAINLESS STEEL HINGES AND ATTACHING HARDWARE
- EPDM GASKET/CUSHION (ON COVER)
- CAM LOCKS
- STAINLESS STEEL COMPRESSION SPRING ASSIST
- RECESSED LIFTING HANDLE
- LIFETIME GUARANTEE



STANDARD SIZES				
QTY.	MODEL NO.	A DIM INCHES (MM)	C DIM INCHES (MM)	UNIT WT. LBS. (KG)
	F1H2424	24 (610)	24 (610)	95 (43)
	F1H2430	24 (610)	30 (762)	108 (49)
	F1H2436	24 (610)	36 (914)	120 (54)
	F1H2442	24 (610)	42 (1067)	141 (64)
	F1H2448	24 (610)	48 (1219)	158 (72)
	F1H3030	30 (762)	30 (762)	120 (54)
	F1H3036	30 (762)	36 (914)	134 (61)
	F1H3042	30 (762)	42 (1067)	156 (71)
	F1H3048	30 (762)	48 (1219)	172 (78)
	F1H3054	30 (762)	54 (1372)	187 (85)
	F1H3060	30 (762)	60 (1524)	201 (91)
	F1H3072	30 (762)	72 (1829)	232 (105)
	F1H3636	36 (914)	36 (914)	149 (68)
	F1H3642	36 (914)	42 (1067)	175 (79)
	F1H3648	36 (914)	48 (1219)	194 (88)
	F1H3654	36 (914)	54 (1372)	209 (95)
	F1H3660	36 (914)	60 (1524)	225 (102)
	F1H3672	36 (914)	72 (1829)	256 (116)

NOTES:

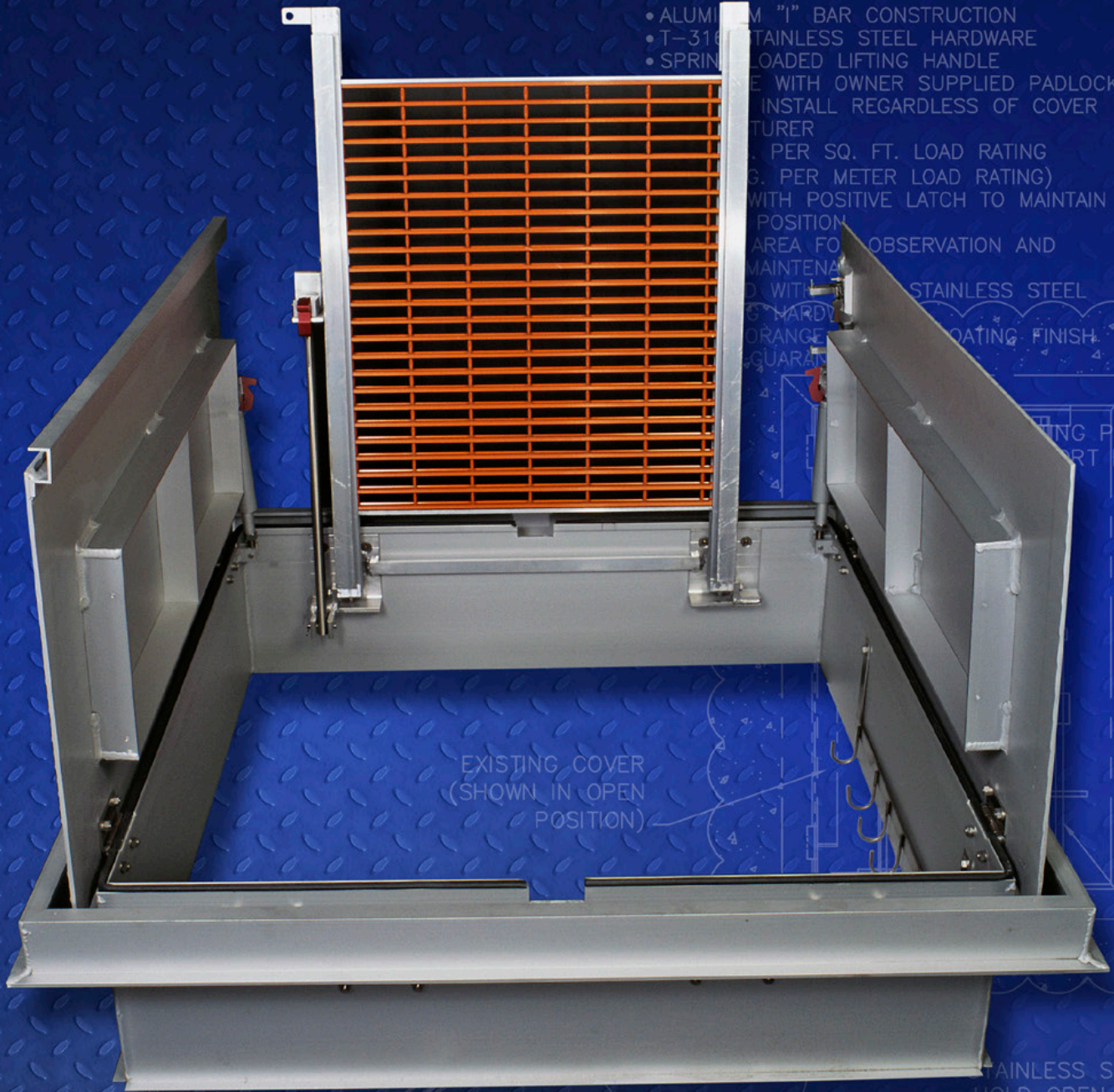
- 1) SUITABLE FOR USE IN OFF STREET LOCATION WHERE NOT SUBJECTED TO TRAFFIC
- 2) PROVIDE A FULL BED OF CLASS "A" CONCRETE UNDER FRAME AND SUPPORT ANGLES.
- 3) MINIMAL LEAKAGE MAY OCCUR UNDER NORMAL OPERATION AS THIS PRODUCT IS NOT GUARANTEED TO BE 100% WATERTIGHT. NOT RECOMMENDED FOR INSTALLATION OVER ELECTRICAL COMPONENTS.



Retro-Grate™

STANDARD FEATURES:

- ALUMINUM "1" BAR CONSTRUCTION
- T-316 STAINLESS STEEL HARDWARE
- SPRING LOADED LIFTING HANDLE
- LOCK WITH OWNER SUPPLIED PADLOCK
- EASY INSTALL REGARDLESS OF COVER
- MANUFACTURER
- PER SQ. FT. LOAD RATING
- (G. PER METER LOAD RATING)
- WITH POSITIVE LATCH TO MAINTAIN
- POSITION
- AREA FOR OBSERVATION AND
- MAINTENANCE
- STAINLESS STEEL
- HARDWARE
- COATING FINISH



EXISTING COVER
(SHOWN IN OPEN
POSITION)

STAINLESS STEEL
HOLD OPEN ARM

(2) SUPPORT BRACKETS
WITH MOUNTING
HARDWARE (8)

HP

HALLIDAY PRODUCTS



Introducing Retro-Grate™

The custom made fall-thru protection system designed to fit most openings, regardless of the cover manufacturer. Easily installed, Retro-Grate™ changes a potentially hazardous access cover opening into a safe and secure surrounding.

Each and every time an access cover is opened, the possibility of a fall-thru accident exists. Retro-Grate™ by Halliday Products eliminates the hazard by covering the opening with a hinged grating panel. When access to the opening is required, the safety color orange powder coated grating panel hinges up and out of the way. Once the work is complete, simply release the latch and lower Retro-Grate™ back into position. The next operator to open the access cover is protected.

Retro-Grate™ is easy to install and allows for minor maintenance and adjustments beneath the access cover without exposing the operator to an uncovered opening. Retro-Grate™ provides additional security against unauthorized entry with the use of an owner supplied padlock and allows for single person inspections.

So, why gamble? Choose Retro-Grate™ by Halliday Products, a proven industry leader you have trusted for over 50 years.

To receive a price quote, use the convenient form on page 32.

RETRO GRATE™
FALL-THRU PROTECTION SYSTEM



Before Retro-Grate™



After Retro-Grate™

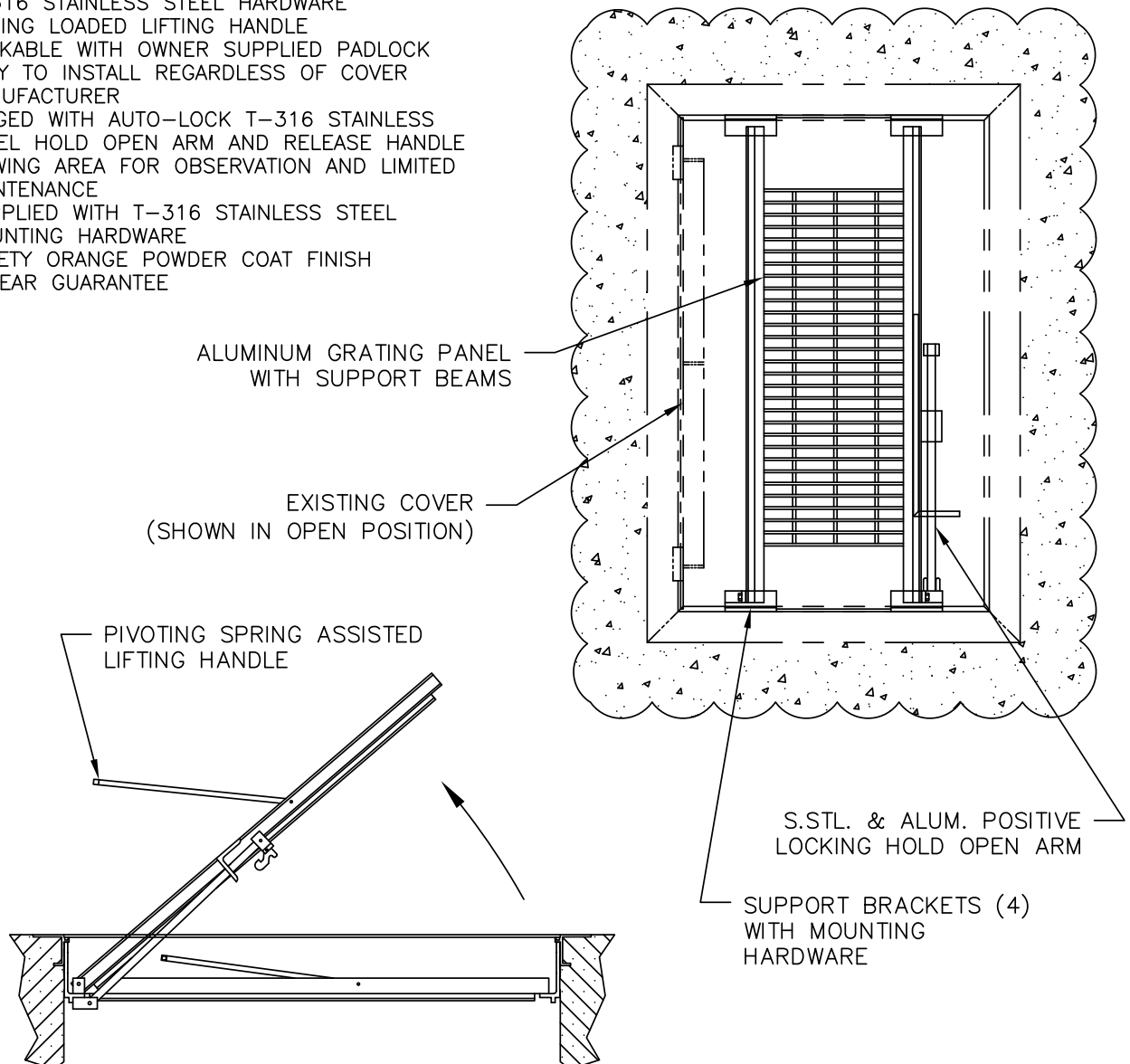


Series X Retro-Grate™



STANDARD FEATURES:

- 300 LBS. PER SQ. FT. LOAD RATING (1464 KG PER SQ. METER LOAD RATING)
- ALUMINUM "1" BAR CONSTRUCTION
- T-316 STAINLESS STEEL HARDWARE
- SPRING LOADED LIFTING HANDLE
- LOCKABLE WITH OWNER SUPPLIED PADLOCK
- EASY TO INSTALL REGARDLESS OF COVER MANUFACTURER
- HINGED WITH AUTO-LOCK T-316 STAINLESS STEEL HOLD OPEN ARM AND RELEASE HANDLE
- VIEWING AREA FOR OBSERVATION AND LIMITED MAINTENANCE
- SUPPLIED WITH T-316 STAINLESS STEEL MOUNTING HARDWARE
- SAFETY ORANGE POWDER COAT FINISH
- 3 YEAR GUARANTEE



APPLICATIONS:

THE SERIES X RETRO-GRATE IS A HINGED ALUMINUM GRATING PANEL THAT IS EASILY INSTALLED BENEATH EXISTING ACCESS COVERS REGARDLESS OF THE ORIGINAL COVER MANUFACTURER. THE RETRO-GRATE PROVIDES ADDITIONAL PROTECTION AGAINST FALL THROUGH ACCIDENTS WHEN THE COVER IS LEFT IN THE OPEN POSITION. THE UNIT IS LOCKABLE BY AN OWNER SUPPLIED PADLOCK AND INCORPORATES A SPRING ASSISTED LIFTING HANDLE THAT POSITIONS THE HANDLE NEAR THE SLAB LEVEL. THE UNIT IS SUPPLIED WITH T-316 STAINLESS STEEL MOUNTING HARDWARE AND AN AUTOMATIC HOLD OPEN ARM WITH ALUMINUM RELEASE LATCH. THE RETRO-GRATE IS DESIGNED TO BE INSTALLED BY MOUNTING THE SUPPORT BRACKETS TO EITHER THE EXISTING FRAMEWORK OR TO THE CONCRETE SLAB BELOW THE FRAMEWORK.

Retro-Grate™ installations require specific information that must be obtained from field measurements and observations acquired at each site. **For units larger than 72" x 72", consult factory.** To obtain a price quotation, each unit will need its own form completed with all required information and faxed to the number below. To submit online, select Retro-Grate™ at www.HallidayProducts.com. Please call 800-298-1027 with any questions and our sales staff will be happy to help you. **Pictures may be necessary to ensure proper installation.**

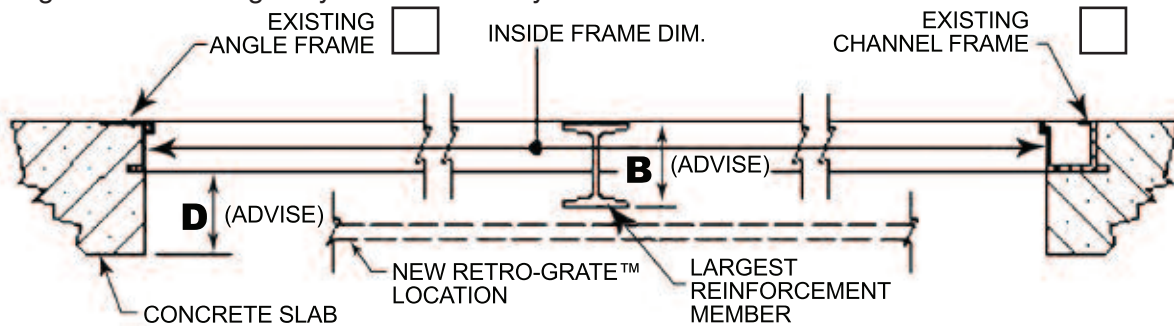


CONTACT INFORMATION

COMPANY		CONTACT PERSON	
PHONE	FAX	EMAIL	

RETRO-GRATE™ REQUIRED INFORMATION

Is the existing frame work angle style or channel style? Check one below.



What is the inside dimension of the frame in both directions? _____

X

(Hinge Side)

What is the depth of the concrete slab below the existing frame? (D)	
What is the largest reinforcement member on the existing cover? (B)	
What is the condition of the concrete at the proposed installation? (If condition of concrete is poor, photos will be required.)	<input type="radio"/> Good <input type="radio"/> Poor
How many door leaves are in the existing frame work?	<input type="radio"/> One <input type="radio"/> Two <input type="radio"/> Other
Are there any obstructions in the existing opening? (If so, consult factory, photos will be required.)	<input type="radio"/> Yes <input type="radio"/> No
Is the slab flush with the inside of the existing frame below the cover?	<input type="radio"/> Yes <input type="radio"/> No
What is the job or location tag?	
Who is the existing cover manufacturer?	
City, State and Zip Code of the shipping destination? (For a Freight ESTIMATE)	



Please Fax to 407-298-4534

6401 Edgewater Drive
Orlando, Florida 32810

Portable Hoists and Sockets

STANDARD FEATURES:

- TYPE-304 STAINLESS STEEL CONSTRUCTION
- 30 FEET (9.14 METERS) OF STAINLESS STEEL CABLE
- GALVANIZED 1 TON (907 KG) HOOK
- STAINLESS STEEL BRAKE WINCH
- ADJUSTABLE REACH IN 1" (25 MM) INCREMENTS

OPTIONS:

- TYPE-316 CONSTRUCTION
- ADDITIONAL CABLE AVAILABLE (SPECIFY 1/2" - 5/8" (12.7 MM - 15.9 MM))
- ADDITIONAL WINCHES AVAILABLE
- STAINLESS STEEL HOOK
- OTHER REACHS AVAILABLE UPON REQUEST (CONSULT US)



Series DA Portable Hoist



STANDARD FEATURES:

- TYPE-304 STAINLESS STEEL CONSTRUCTION
- 30 FEET (9.14 METERS) OF STAINLESS STEEL CABLE
- GALVANIZED 1 TON (907 KG) HOOK
- STAINLESS STEEL BRAKE WINCH
- 3 YEAR GUARANTEE

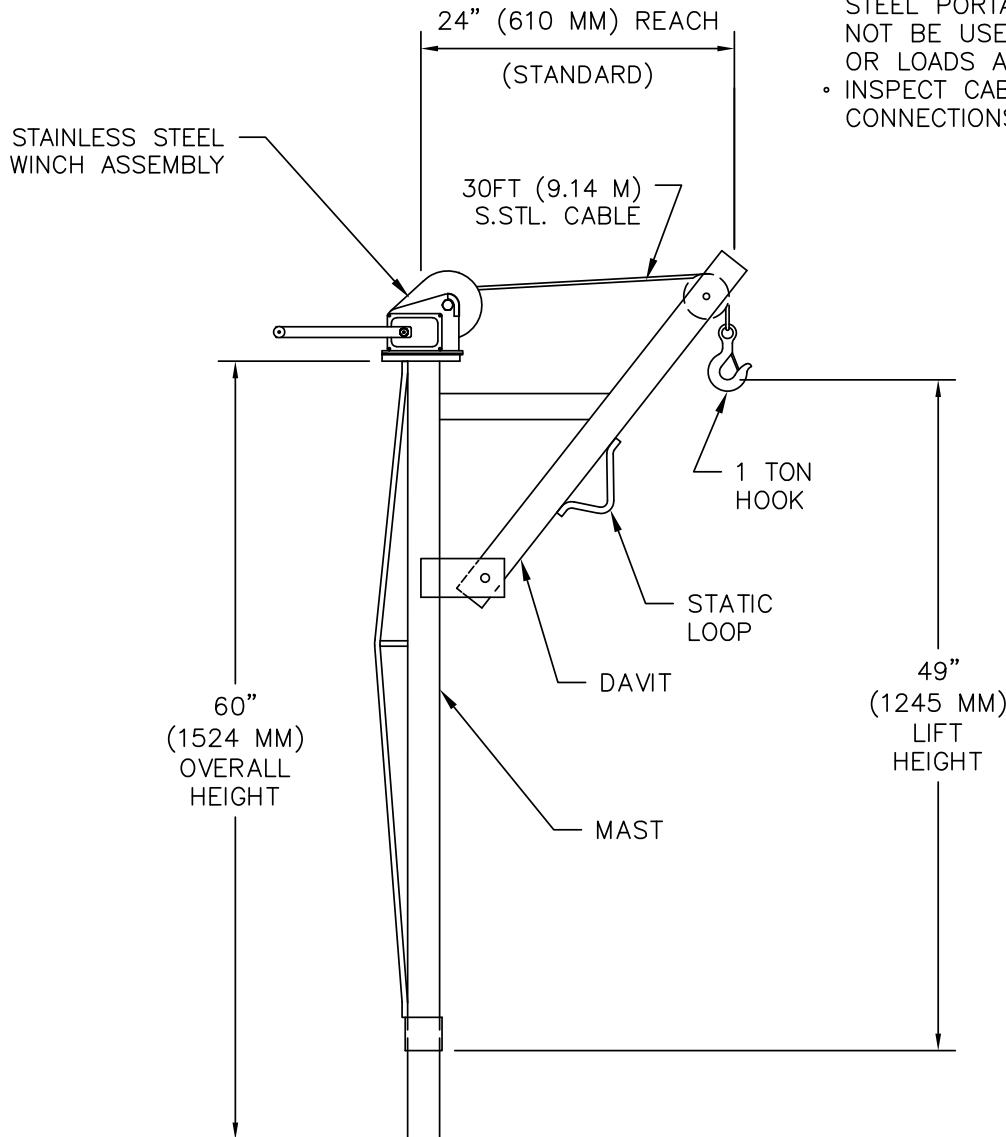
OPTIONS:

- TYPE-316 CONSTRUCTION
- ADDITIONAL CABLE AVAILABLE (SPECIFY LENGTH)
- ADDITIONAL WINCHES AVAILABLE
- STAINLESS STEEL HOOK
- OTHER REACHES AVAILABLE UPON REQUEST (CONSULT FACTORY)

STANDARD SIZES				
QTY.	MODEL NO.	CABLE SIZE INCHES (MM)	MAX. LOAD LBS. (KG)	UNIT WT. LBS. (KG)
	D1A24F	3/16" (4.76)	500 (227)	65 (30)
	D2A24G	1/4" (6.35)	1000 (454)	88 (40)
	D3A24H	1/4" (6.35)	1500 (680)	103 (48)

NOTICE:

- HALLIDAY PRODUCTS STAINLESS STEEL PORTABLE HOIST SHOULD NOT BE USED TO MOVE PEOPLE OR LOADS ABOVE PEOPLE.
- INSPECT CABLE AND HOOK CONNECTIONS BEFORE EACH USE.



Series DB Portable Hoist



STANDARD FEATURES:

- TYPE-304 STAINLESS STEEL CONSTRUCTION
- 30 FEET (9.14 METERS) OF STAINLESS STEEL CABLE
- GALVANIZED 1 TON (907 KG) HOOK
- STAINLESS STEEL BRAKE WINCH
- ADJUSTABLE REACH IN 1" (25 MM) INCREMENTS

OPTIONS:

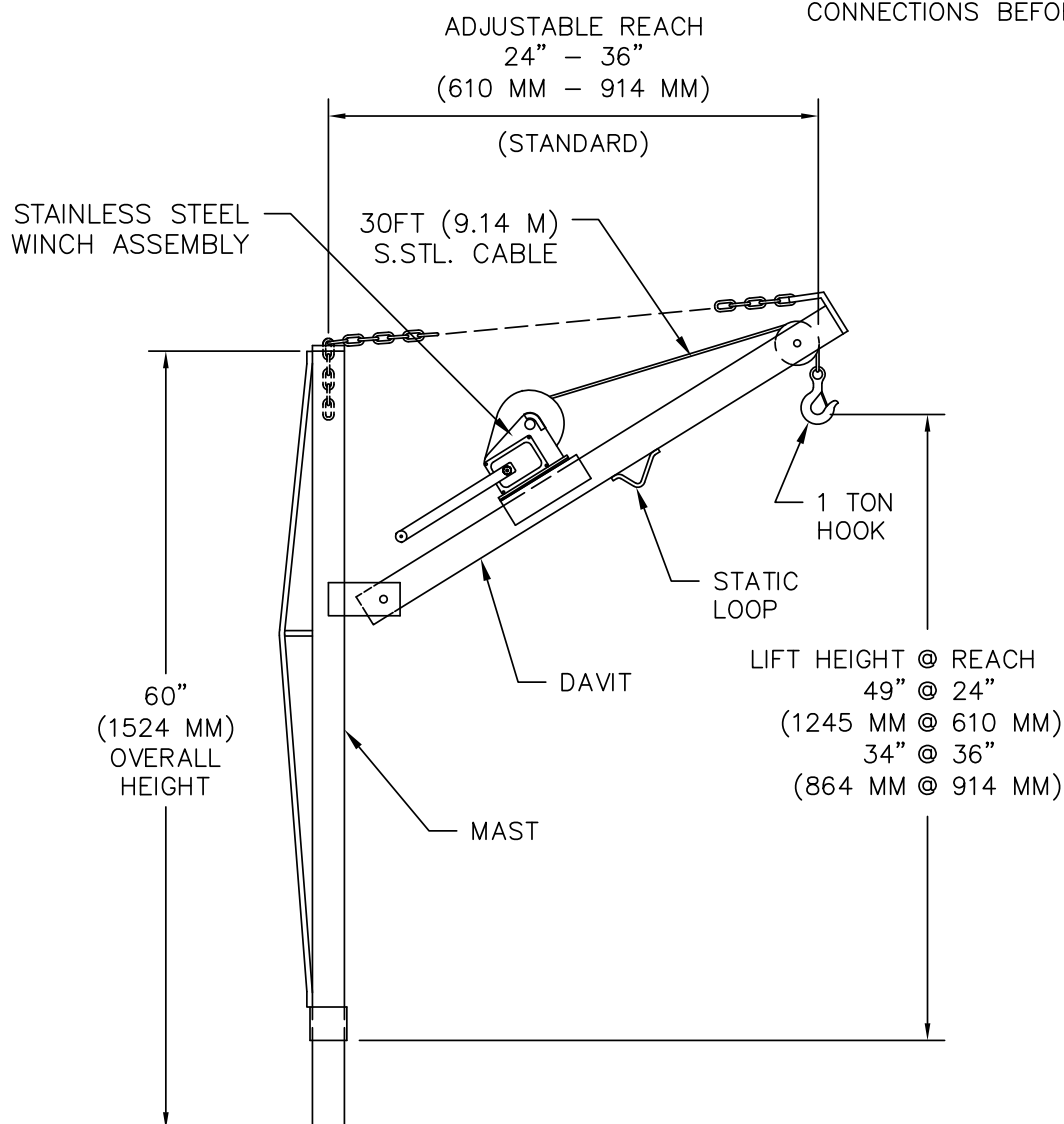
- TYPE-316 CONSTRUCTION
- ADDITIONAL CABLE AVAILABLE (SPECIFY LENGTH)
- ADDITIONAL WINCHES AVAILABLE
- STAINLESS STEEL HOOK
- OTHER REACHES AVAILABLE UPON REQUEST (CONSULT FACTORY)

STANDARD SIZES

QTY.	MODEL NO.	CABLE SIZE INCHES (MM)	MAX. LOAD LBS. (KG)	UNIT WT. LBS. (KG)
	D1B36F	3/16" (4.76)	310 (141)	73 (33)
	D2B36G	1/4" (6.35)	1000 (454)	96 (44)
	D3B36H	1/4" (6.35)	1300 (590)	136 (62)

NOTICE:

- HALLIDAY PRODUCTS STAINLESS STEEL PORTABLE HOIST SHOULD NOT BE USED TO MOVE PEOPLE OR LOADS ABOVE PEOPLE.
- INSPECT CABLE AND HOOK CONNECTIONS BEFORE EACH USE.

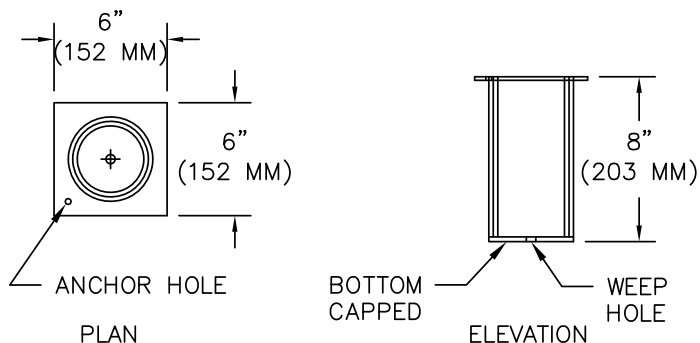


Series D Hoist Sockets

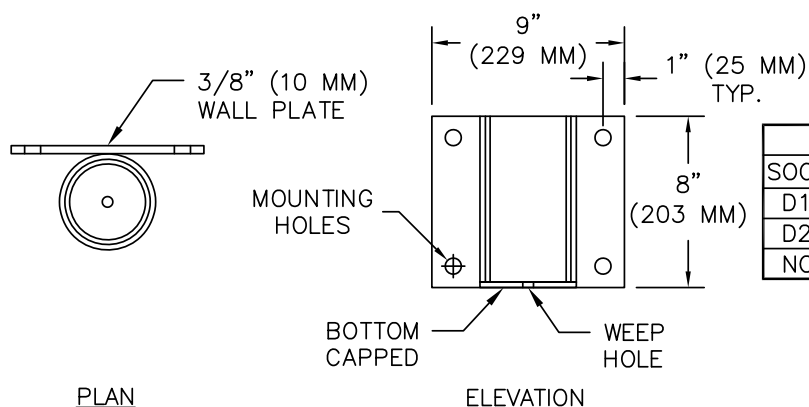


STANDARD FEATURES:

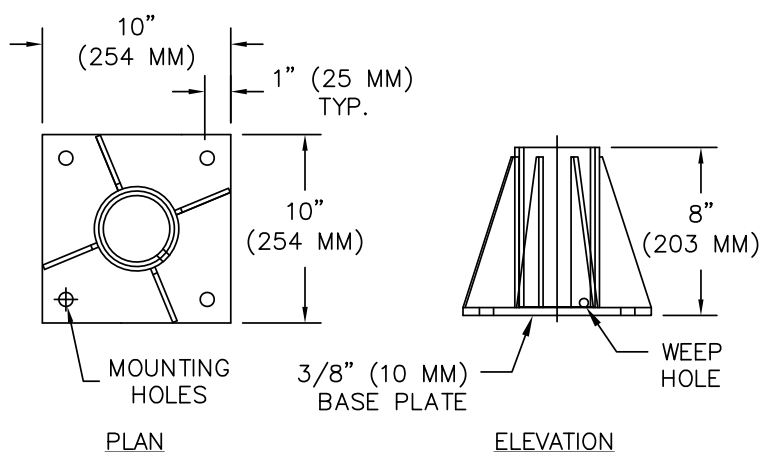
- STAINLESS STEEL TYPE-304 (STANDARD) OR TYPE-316 (OPTIONAL) CONSTRUCTION
- POLYMER LINING FOR SMOOTHER ROTATION
- AVAILABLE IN 3 STYLES
- 3 YEAR GUARANTEE



EMBED HOIST SOCKETS	
SOCKET MODEL #	FOR HOIST MODELS
D1R LINED	D1A AND D1B
D2R LINED	D2A AND D2B
D3R LINED	D3A AND D3B



WALL MOUNT HOIST SOCKETS	
SOCKET MODEL #	FOR HOIST MODELS
D1V LINED	D1A AND D1B
D2V LINED	D2A AND D2B
NOT AVAILABLE	D3A AND D3B



FLOOR MOUNT HOIST SOCKETS	
SOCKET MODEL #	FOR HOIST MODELS
D1S LINED	D1A AND D1B
D2S LINED	D2A AND D2B
D3S LINED	D3A AND D3B

NOTES:

- 1) MOUNTING HOLES ARE $\phi 3/4"$ ($\phi 19$ MM)
- 2) D3S BASE PLATE IS 12" X 12"
- 3) D3S MOUNTING HOLES ARE $\phi 7/8"$ ($\phi 22$ MM)

Mixer Masts

REQUIRED INFORMATION:

- QUANTITY
- OVERALL TANK DEPTH
- TYPE 304 OR 316 STAINLESS
- 2" (51 MM) OR 4" (102 MM)

SQUARE TUBE WALL THICKNESS:

- .125" (3.2 MM)
- .1875" (4.8 MM)
- .25" (6.4 MM)

STANDARD FEATURES:

AVAILABLE IN 2" (51 MM) AND 4" (102 MM) MO
ALL WELDED CONSTRUCTION
POLYMER BUSHINGS AT ALL PIVOT POINTS
POSITIONER PLATE W/MULTIPLE SETTINGS
HOIST SOCKET W/BUSHING
STAINLESS STEEL M
CUSTOM FIT FOR E
PIVOTING BASE BR
EXTENSION BRACKET
5 YEAR GUARANTEE



LOWER BRACKET STYLE

- PIVOT BASE BRACKET (STANDARD)
- WALL MOUNT BASE BRACKET (OPTIONAL)

ADDITIONAL OPTIONS

- PORTABLE HOIST (SPECIFY MIXER M)
- MIXER STOP BRACKET (SPECIFY MIX)
- EXTENSION BRACKET (FOR OFFSET)
- LIFT CABLE
- STATIC CABLE

HP

HALLIDAY PRODUCTS

Series M Mixer Masts



STANDARD FEATURES:

- AVAILABLE IN 2" (51 MM) AND 4" (102 MM) MODELS
- ALL WELDED CONSTRUCTION
- POLYMER BUSHINGS AT ALL PIVOT POINTS
- POSITIONER PLATE W/MULTIPLE SETTINGS
- HOIST SOCKET W/BUSHING
- STAINLESS STEEL MOUNTING ANCHORS
- CUSTOM FIT FOR EACH APPLICATION
- PIVOTING BASE BRACKET
- EXTENSION BRACKETS AVAILABLE
- 3 YEAR GUARANTEE

REQUIRED INFORMATION:

- QUANTITY
- OVERALL TANK DEPTH
- TYPE 304 OR 316 STAINLESS STEEL
- 2" (51 MM) OR 4" (102 MM)

SQUARE TUBE WALL THICKNESS OPTIONS

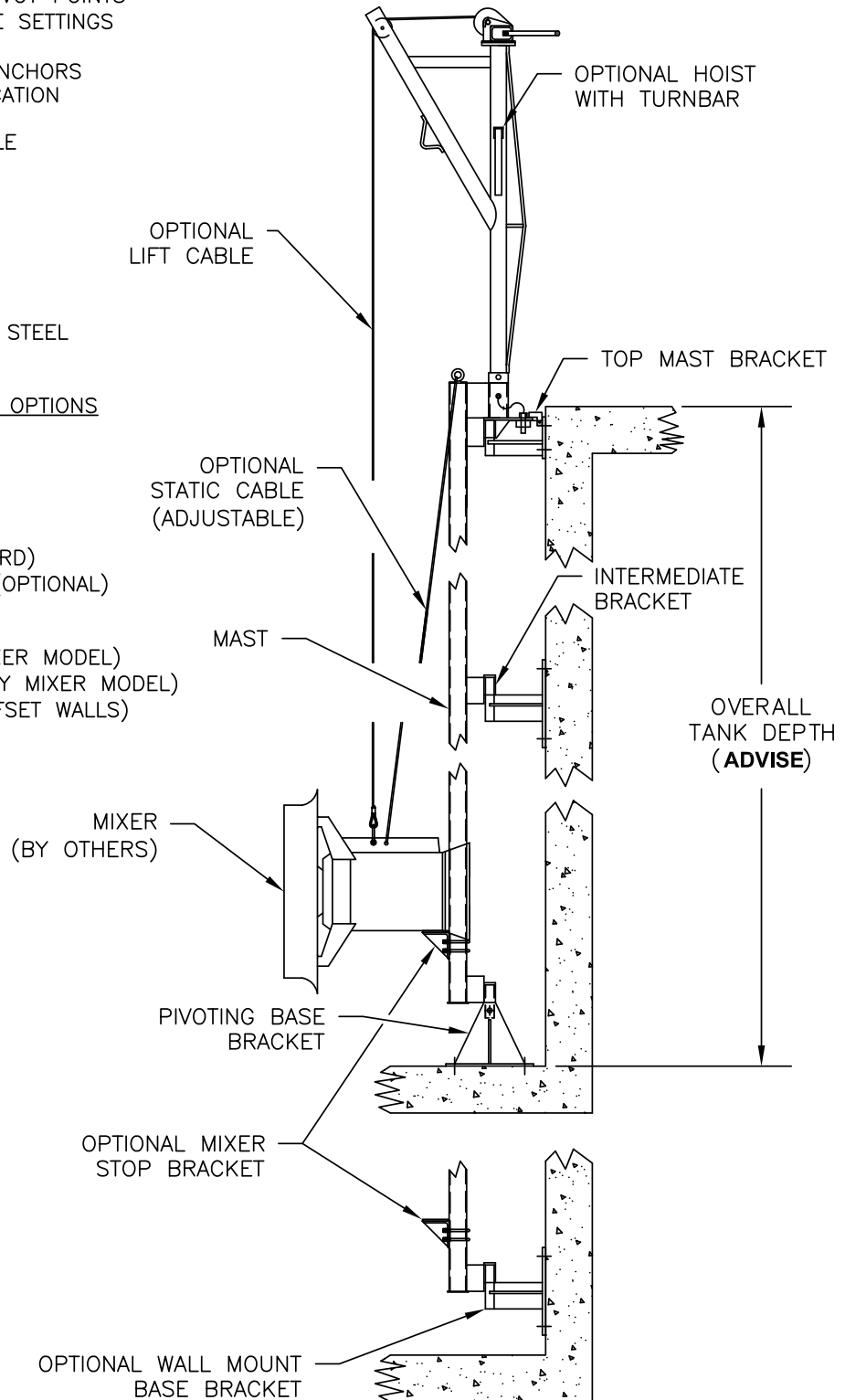
- .125" (3.2 MM)
- .1875" (4.8 MM)
- .25" (6.4 MM)

LOWER BRACKET STYLE

- PIVOT BASE BRACKET (STANDARD)
- WALL MOUNT BASE BRACKET (OPTIONAL)

ADDITIONAL OPTIONS

- PORTABLE HOIST (SPECIFY MIXER MODEL)
- MIXER STOP BRACKET (SPECIFY MIXER MODEL)
- EXTENSION BRACKET (FOR OFFSET WALLS)
- LIFT CABLE
- STATIC CABLE



Telescoping Valves

STANDARD FEATURES:

- T-304 STAINLESS STEEL CONSTRUCTION
(NOTE: NOT AVAILABLE IN T-316 S.STL.)
- NON-RISING STEM DESIGN
- 16" (406 MM) DIAMETER ALUMINUM HANDWHEEL
- $\phi 1 \frac{1}{8}$ ($\phi 29$ MM) S.STL. TRIPLE LEAD ACME ROD
- BRASS LIFTING NUT
- POLYMER BEARING PADS
- 150# S.STL. COMPANION FLANGE
- $\frac{1}{4}$ " (7 MM) THICK NEOPRENE WIPE GASKET (2)
- 3 YEAR GUARANTEE

REQUIRED INFORMATION:

- BASE PLATE ELEVATION
- OFFSET - IF REQUIRED
- HIGH WATER ELEVATION
- SLIDE PIPE MODEL (501, 502, 503)
- LENGTH OF TRAVEL
- EXISTING RISER PIPE SIZE

MODEL 501

MODEL 502

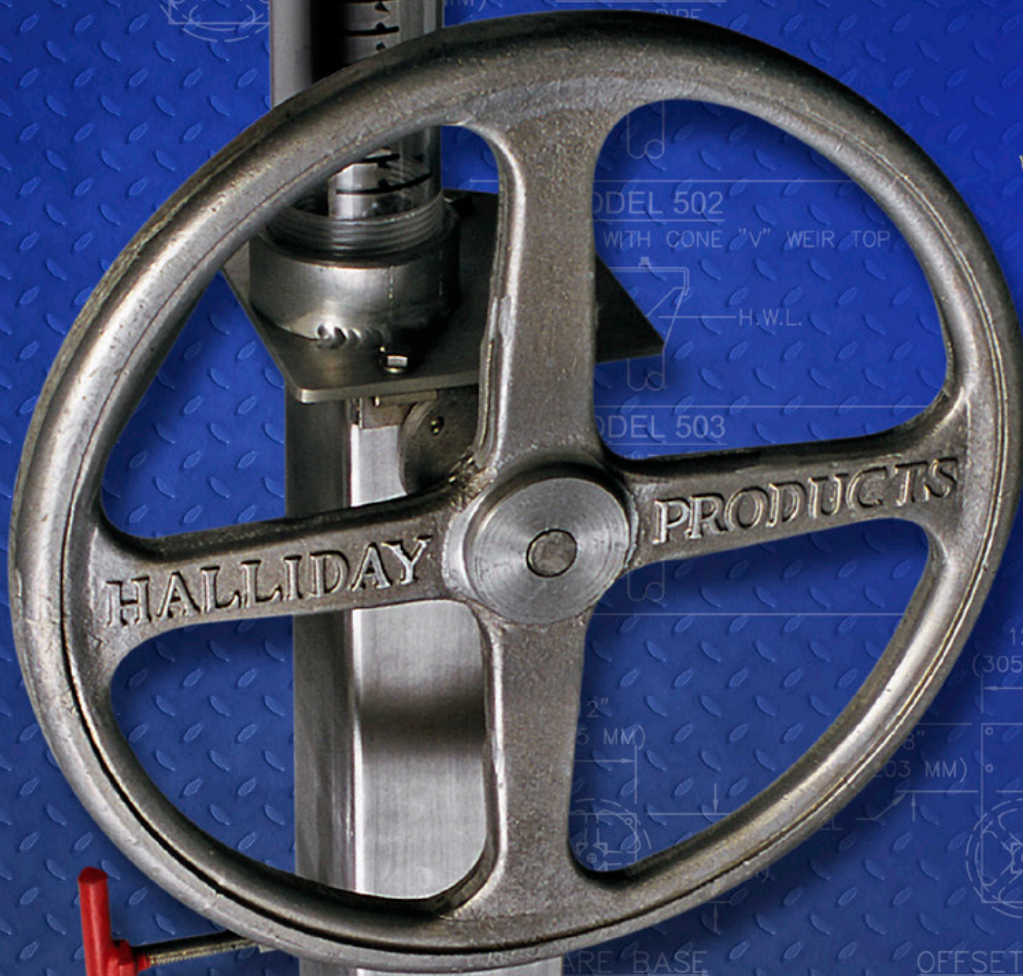
WITH CONE "V" WEIR TOP

H.W.L.

MODEL 503

ARE BASE
(MM) S.STL. PLATE)

OFFSET BASE
($\frac{1}{2}$ " (13 MM) S.STL. PLATE)



HP

HALLIDAY PRODUCTS

Series V4A Telescoping Valve



STANDARD FEATURES:

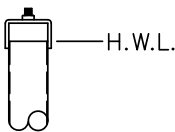
- T-304 STAINLESS STEEL CONSTRUCTION
(NOTE: NOT AVAILABLE IN T-316 S.STL.)
- NON-RISING STEM DESIGN
- 16" (406 MM) DIAMETER ALUMINUM HANDWHEEL
- $\phi 1 \frac{1}{8}$ ($\phi 29$ MM) S.STL. TRIPLE LEAD ACME ROD
- BRASS LIFTING NUT
- POLYMER BEARING PADS
- 150# S.STL. COMPANION FLANGE
- 1/4" (7 MM) THICK NEOPRENE WIPE GASKET (2)
- 3 YEAR GUARANTEE

REQUIRED INFORMATION:

- BASE PLATE ELEVATION
- OFFSET - IF REQUIRED
- HIGH WATER ELEVATION
- SLIDE PIPE MODEL (501, 502, 503)
- LENGTH OF TRAVEL
- EXISTING RISER PIPE SIZE

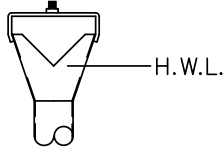
MODEL 501

SLIDE PIPE



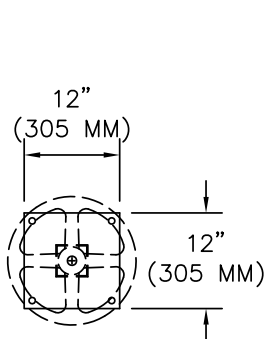
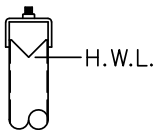
MODEL 502

SLIDE PIPE WITH CONE "V" WEIR TOP



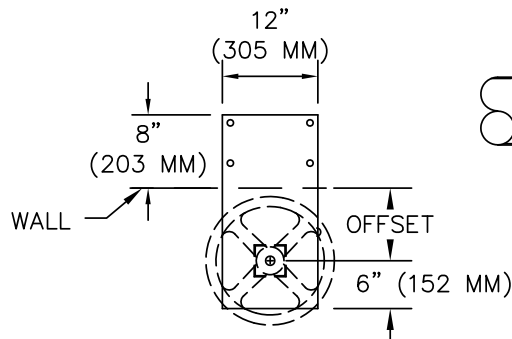
MODEL 503

SLIDE PIPE WITH "V" WEIR TOP



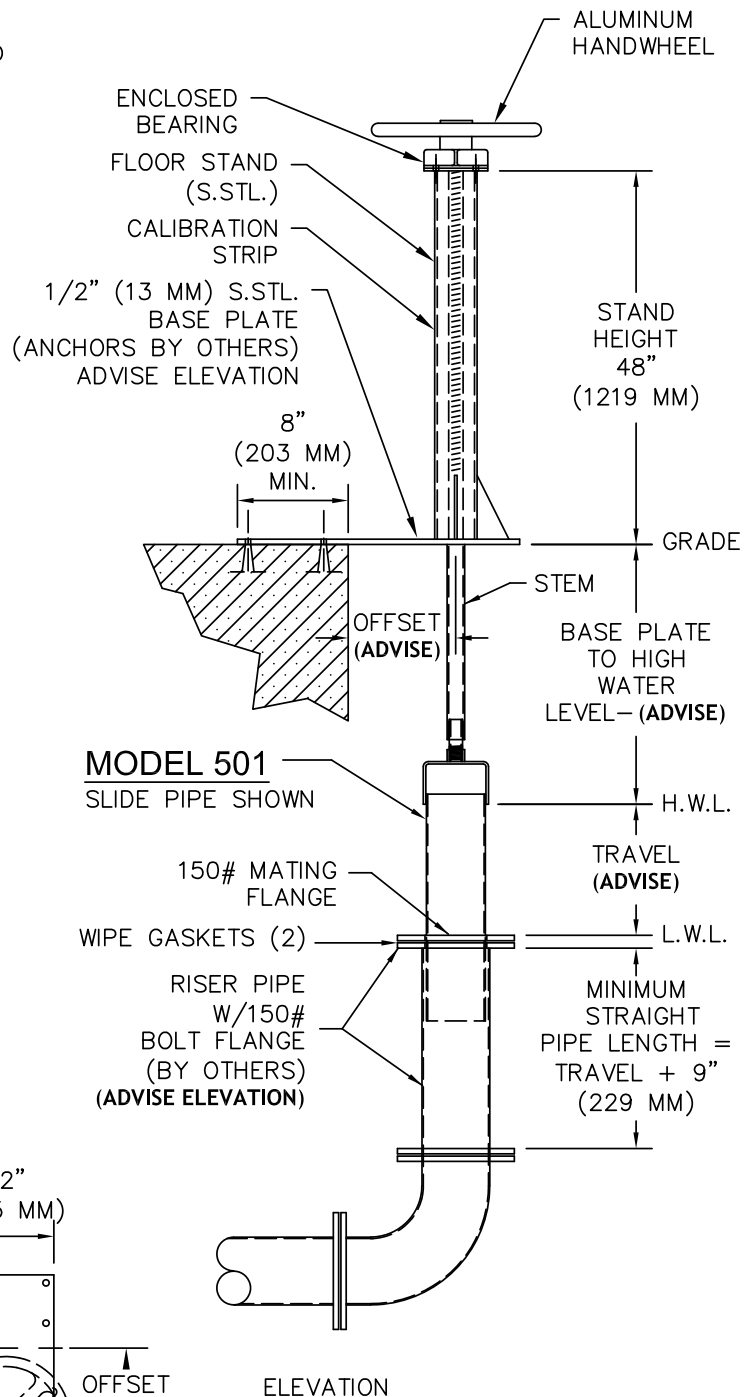
SQUARE BASE

(3/8" (10 MM) S.STL. PLATE)



OFFSET BASE

(1/2" (13 MM) S.STL. PLATE)



Series V4R Telescoping Valve



STANDARD FEATURES:

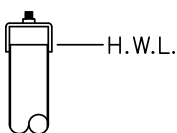
- T-304 STAINLESS STEEL CONSTRUCTION
(NOT AVAILABLE IN T-316 S.STL.)
- RISING STEM DESIGN
- 16" (406 MM) DIAMETER ALUMINUM HANDWHEEL
- 1" (25 MM) STAINLESS STEEL RACK W/S.STL. PINION
- OIL-IMPREGNATED SINTERED BRONZE BEARING
- CLEAR STEM COVER WITH CALIBRATION STRIP
- 150# S.STL. COMPANION FLANGE
- 1/4" (7 MM) THICK NEOPRENE WIPE GASKET (2)
- 3 YEAR GUARANTEE

REQUIRED INFORMATION:

- BASE PLATE ELEVATION
- OFFSET - IF REQUIRED
- HIGH WATER ELEVATION
- SLIDE PIPE MODEL (501, 502, 503)
- LENGTH OF TRAVEL
- EXISTING RISER PIPE SIZE

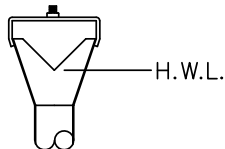
MODEL 501

SLIDE PIPE



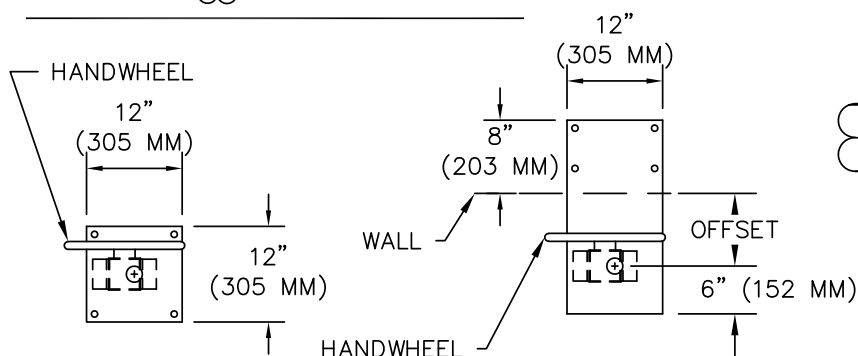
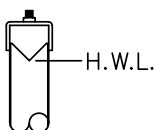
MODEL 502

SLIDE PIPE WITH CONE "V" WEIR TOP



MODEL 503

SLIDE PIPE WITH "V" WEIR TOP

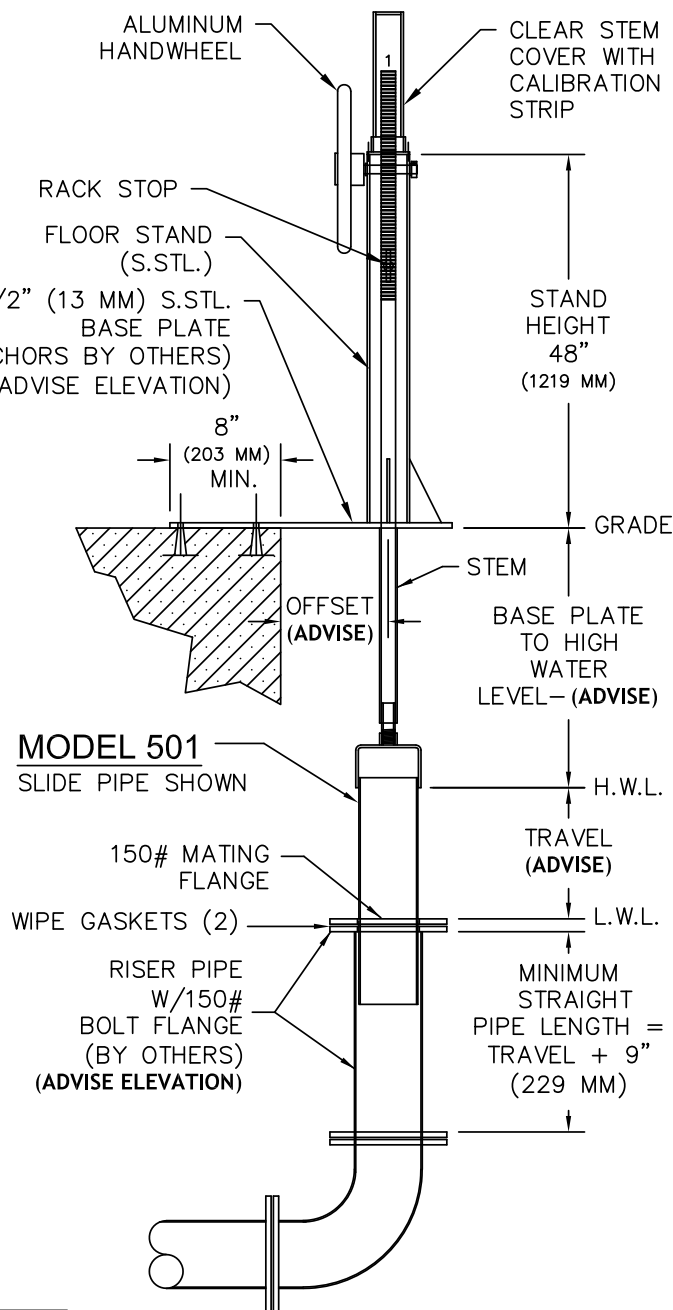


SQUARE BASE

(3/8" (10 MM) S.STL. PLATE)

OFFSET BASE

(1/2" (13 MM) S.STL. PLATE)



ELEVATION

PORTABLE PROTECTION FALL-THRU PREVENTION SYSTEM

Halliday Products is now the exclusive USA manufacturer of the New Portable Manhole Safety Grate, designed by Mass Products.

safety
grates
BY MASS



Easily installed, just fold and move to where you need it.



Hinged opening provides easy access to manholes.



Slot and nylon roller for hoses and camera.



Series P Portable Manhole Safety Grate

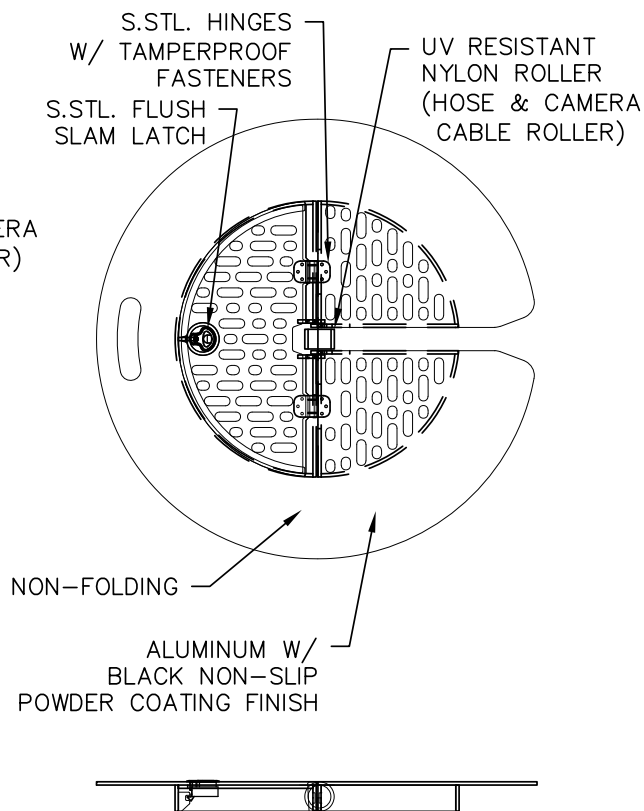
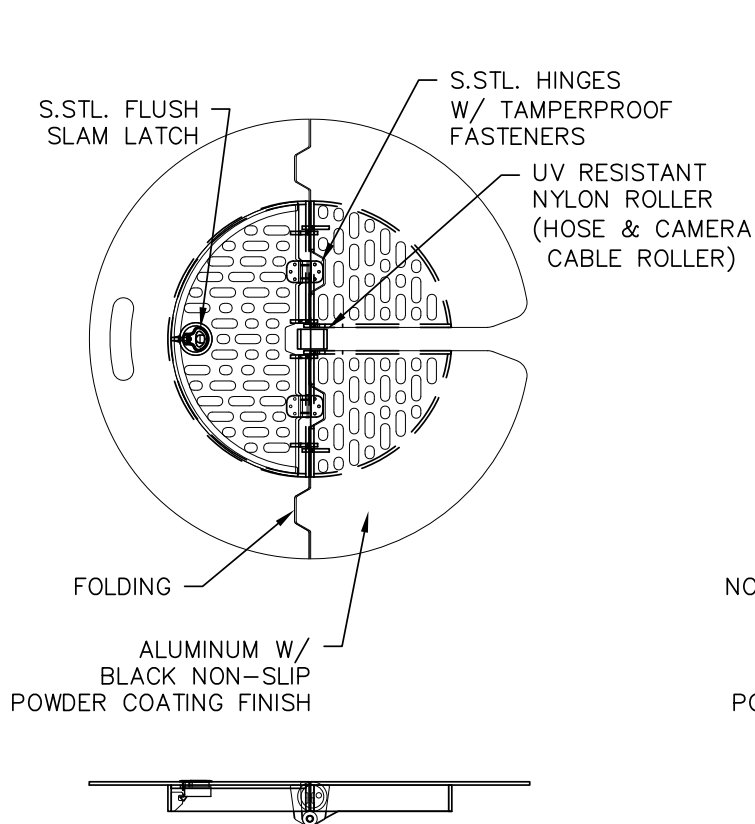


STANDARD FEATURES:

- ALL ALUMINUM CONSTRUCTION (HIGH QUALITY, LIGHTWEIGHT MATERIAL)
- SPECIAL BLACK NON-SLIP POWDER COATED FINISH
- SINGLE PORT ACCESS OPENING FOR SAFETY
- A "UV" RESISTANT NYLON ROLLER TO ACCOMMODATE JET ROD HOSES AND CAMERA CABLES
- SELF-VENTILATING ALLOWING FOR NATURAL AIR FLOW AND/OR SMOKE TESTING
- T-316 STAINLESS STEEL HINGES AND HARDWARE
- 300 LBS. PER SQ FT. LOAD RATING (1464 KG PER SQ. METER LOAD RATING)
- PORTABLE FOLDING & NON-FOLDING DESIGNS

STANDARD SIZES (FOLDING)			
QTY.	MODEL NO.	MANHOLE SIZE INCHES (MM)	UNIT WT. LBS (KG)
	P1S B	21.654" – 25.591" (550 – 650)	27 (12.4)
	P1S C	29.33" – 33.267" (745 – 845)	32 (14.5)

STANDARD SIZE (NON-FOLDING)			
QTY.	MODEL NO.	MANHOLE SIZE INCHES (MM)	UNIT WT. LBS (KG)
	P1S N	21.654" – 25.591" (550 – 650)	28 (12.7)



P1S SERIES R0

Ladders/Safety Extension

SERIES L1B AND LADDERS

STANDARD FEATURES

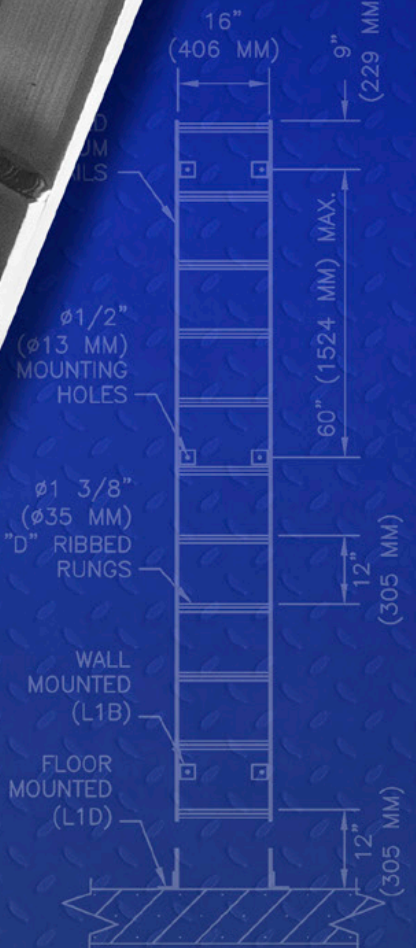
- ALL ALUMINUM CONSTRUCTION
- 1 3/8" DIAMETER RAILS WITH SLIP RESISTANT SURFACE
- CUSTOM FIT WALL MOUNTING (SPECIFY)
- FLOOR AND WALL MOUNTING (SPECIFY)
- FLAT OR RIBBED RUNGS (SPECIFY)
- ALSO AVAILABLE IN STAINLESS STEEL CONSTRUCTION
- 3 YEAR WARRANTY

REQUIRED INFORMATION

- BASIN DIAMETER
- RAIL LENGTH
- STANDOFF
- L1B OR L1D
- L1B MADE

STANDOFF
[178 MM] MIN.)
(ADVISE)

SPECIFY DIAMETER
AND WALL MOUNTING



FLOOR AND WALL MOUNT

HP

HALLIDAY PRODUCTS

Series L1B and L1D Ladders

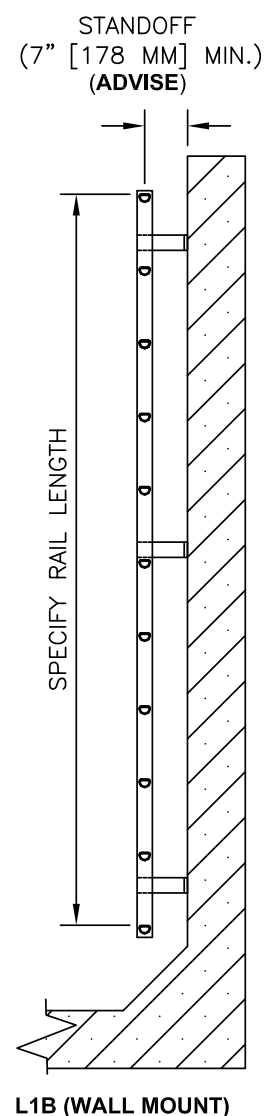
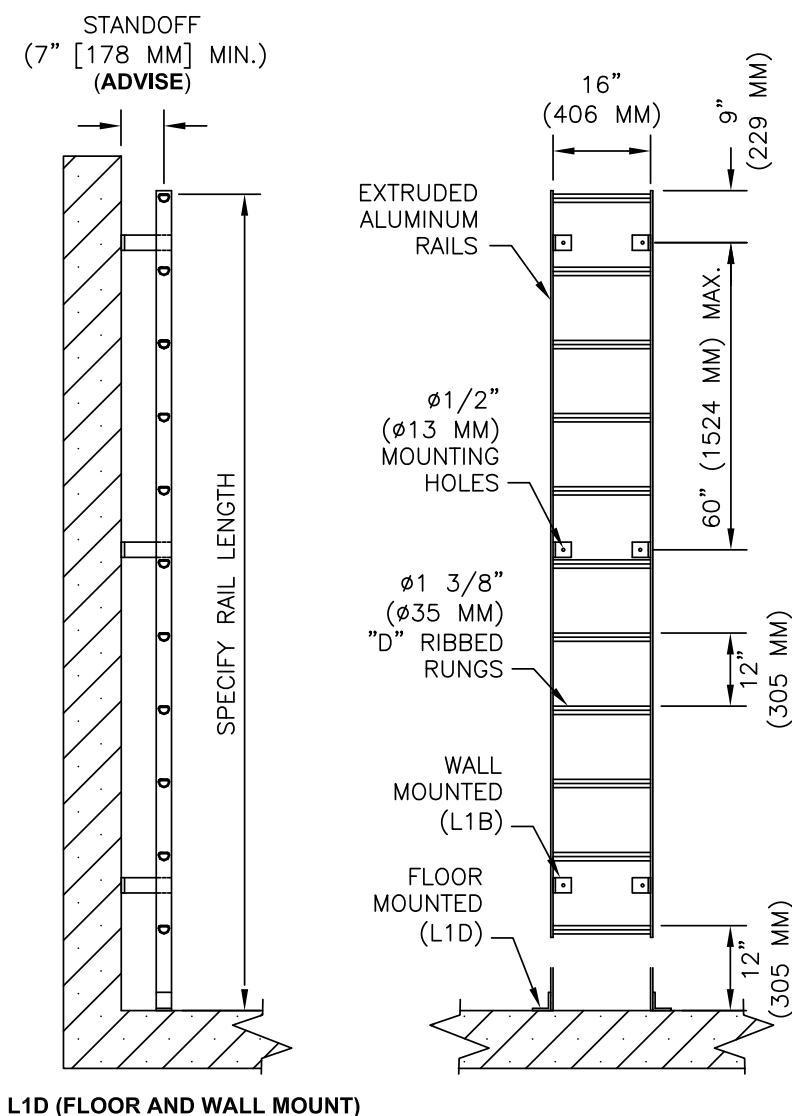
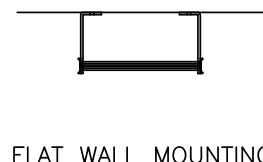
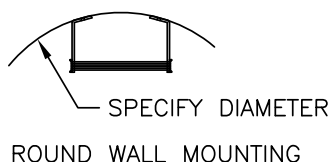


STANDARD FEATURES:

- ALL ALUMINUM WELDED CONSTRUCTION
- 1 3/8" DIAMETER TYPE "D" RUNG WITH SLIP RESISTANT SURFACE
- CUSTOM FIT WALL MOUNTED STANDOFFS
- FLOOR AND WALL OR WALL-ONLY MOUNTING (SPECIFY)
- FLAT OR ROUND WALL MOUNTING (SPECIFY)
- ALSO AVAILABLE IN T-304 OR T-316 STAINLESS STEEL CONSTRUCTION
- 3 YEAR GUARANTEE

REQUIRED INFORMATION:

- BASIN DIAMETER OR FLAT WALL
- RAIL LENGTH IN FEET
- STANDOFF LENGTH (7" [178 MM] MIN.)
- L1B OR L1D MOUNTING
- L1B MADE IN EVEN FOOT INCREMENTS ONLY



Series L1E Ladder Extension



STANDARD FEATURES:

- EASY TO INSTALL ON ALUMINUM OR STAINLESS LADDERS
- SECURE LOCKING IN THE EXTENDED POSITION
- LIGHT WEIGHT OPERATION
- ALL ALUMINUM AND STAINLESS STEEL CONSTRUCTION
- ALSO AVAILABLE IN ALL TYPE 304 OR TYPE 316 S.STL. CONSTRUCTION
- 3 YEAR GUARANTEE

MODEL NO.	HEIGHT INCHES (MM)	ABOVE LADDER INCHES (MM)	MINIMUM TANK DEPTH INCHES (MM)
A	37" (940 MM)	42" (1067 MM)	73" (1854 MM)
B	34" (864 MM)	39" (991 MM)	55" (1397 MM)

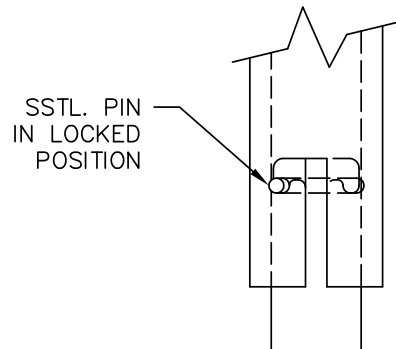
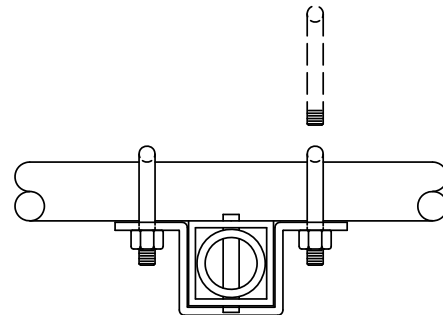
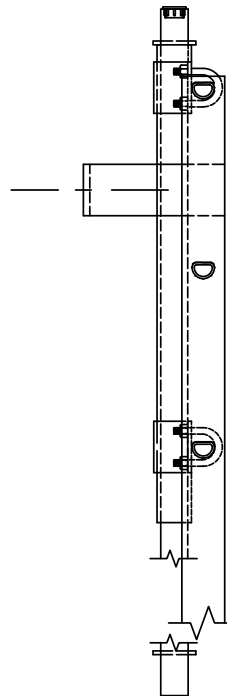
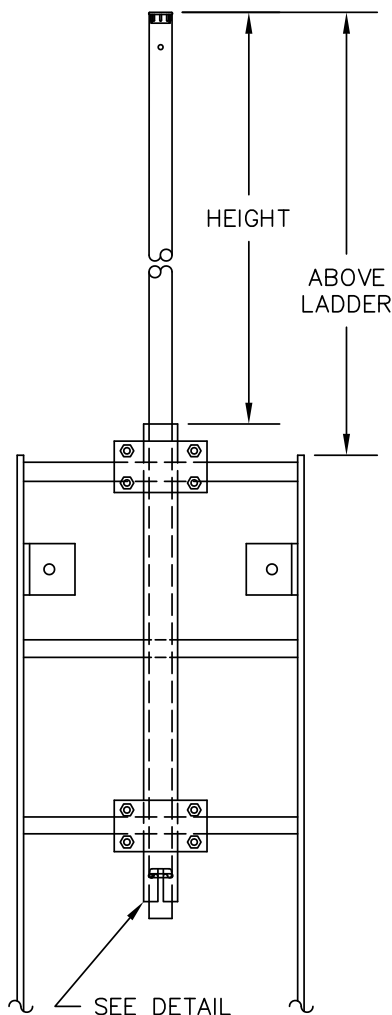
INSTALLATION & OPERATION INSTRUCTIONS

Installation:

- Place ladder flat on the ground with standoffs up.
- Place 2" (51 MM) square aluminum tube in center of rungs with the "T" shaped slot below third rung as shown (Model A) or second rung (Model B).
- Place stainless steel channel clamp over square aluminum tube so "U" bolt holes line up on either side of rungs as shown.
- Insert stainless steel "U" bolts over rung and through holes in stainless steel channel clamp as shown.
- Apply 10-15 foot pounds (1.3-2.1 KG/M) of torque to all "U" bolt nuts.
- Verify that square aluminum tube is secured to ladder rungs.

Operation:

- To engage ladder extension, grasp aluminum post above the top stainless steel channel clamp, and pull straight up until lower stainless steel pin is seated.
- Rotate aluminum post 1/4 turn in either direction to secure pin in slot as shown in Detail.



DETAIL

NOTES:
PIN MUST BE IN LOCKED POSITION PRIOR TO OPERATION.

Debris Baskets

STANDARD FEATURES:

- ALL ALUMINUM CONSTRUCTION
- PUNCHED HOLE SCREENING STYLE
- EXTRUDED ALUMINUM GUIDERAIL
- CUSTOM SIZES AVAILABLE
- PIPE RAIL & CHANNEL GUIDERAIL AVAILABLE
- ALSO AVAILABLE IN T-304 OR T-316 STAINLESS STEEL CONSTRUCTION
- RECOMMENDED UP TO 8" INFLUENT PIPE

STANDARD
(7" [178 MM])
(ADVISE)

INFLUENT
PIPE

BASKET
BACK

BASKET STOP
(LOCATE)

INFLUENT PIPE

INFLUENT

RAILS MOUNTED IN FLANK
/ FLUSH INFLUENT PIPE

RAILS MOUNTED IN ROUND
BASIN

Ø2" (Ø51 MM)
HOLE SIZE
3" (Ø76 MM)
CENTERS

2 5/8" (65 MM)

18" (457 MM)

9" (229 MM)

28" (711 MM)

INFLUENT
PIPE

9" (229 MM)
BACK

8" (203 MM)

BASKET

STOP

BASKET AND RAILS

HP

HALLIDAY PRODUCTS

Series B1A Trash Basket

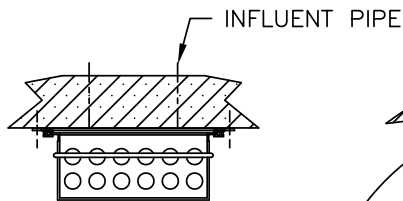


STANDARD FEATURES:

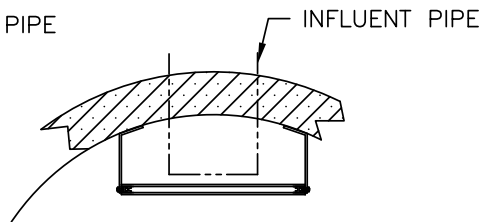
- ALL ALUMINUM CONSTRUCTION
- PUNCHED HOLE SCREENING STYLE
- EXTRUDED ALUMINUM GUIDERAIL
- CUSTOM SIZES AVAILABLE
- PIPE RAIL & CHANNEL GUIDERAIL AVAILABLE
- ALSO AVAILABLE IN T-304 OR T-316 S.STL. CONSTRUCTION
- RECOMMENDED UP TO 8" INFLUENT PIPE

REQUIRED INFORMATION:

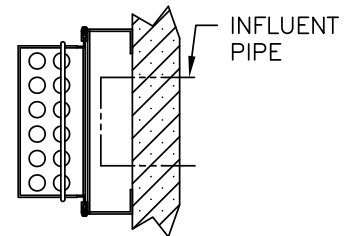
- BASIN DIAMETER
- RAIL LENGTH
- STANDOFF LENGTH



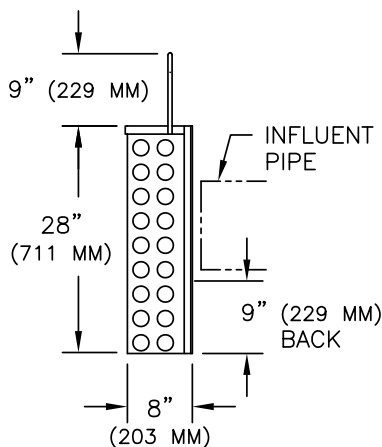
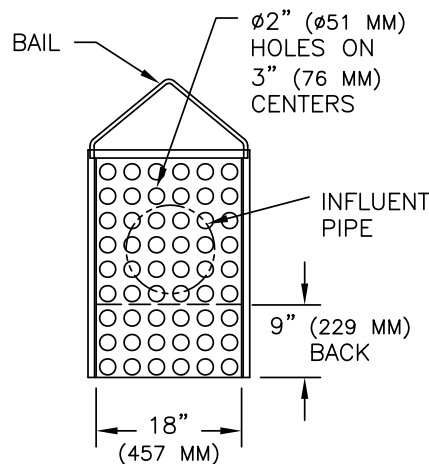
RAILS MOUNTED IN TANK
W/FLUSH INFLUENT PIPE



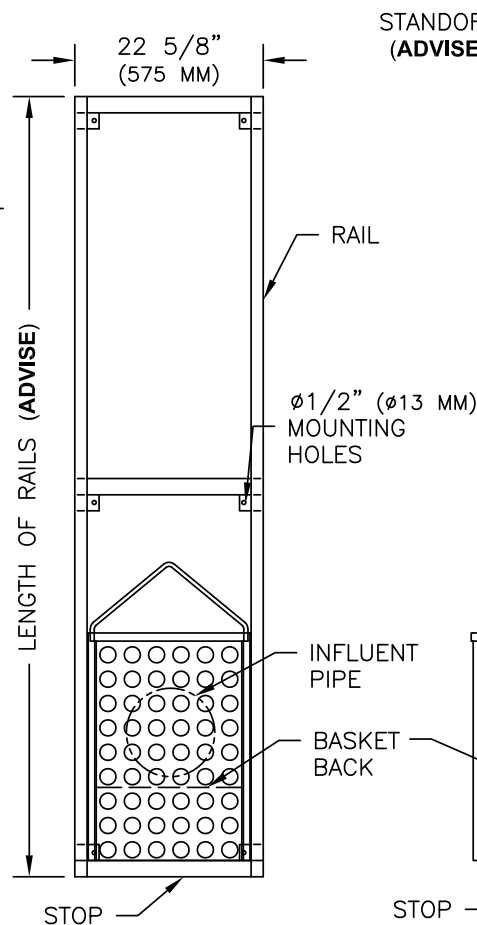
RAILS MOUNTED IN ROUND
BASIN



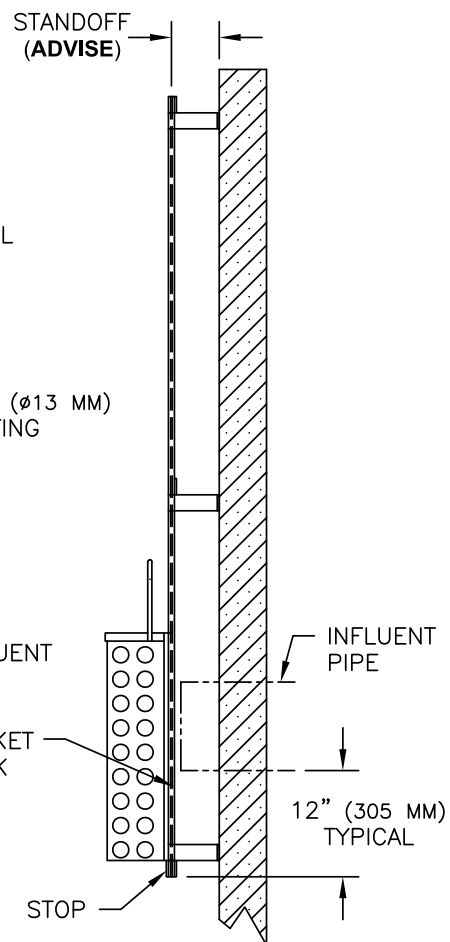
RAILS MOUNTED IN
RECTANGULAR BASIN



BASKET



BASKET AND RAILS



Series B1B Trash Basket

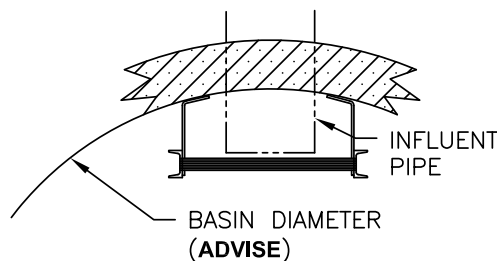


STANDARD FEATURES:

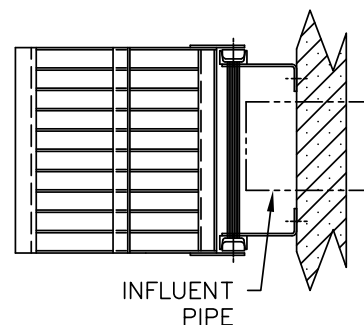
- ALL ALUMINUM CONSTRUCTION
- SOLID ALUMINUM WHEELS AND STAINLESS STEEL AXLES
- 1 3/8" (35 MM) TYPE "D" RUNG W/ SLIP RESISTANT SURFACE
- BAR SCREEN STYLE BASKET
- HEAVY DUTY LADDER/GUIDE RAIL COMBINATION
- AVAILABLE W/O LADDER RUNGS (GUIDE RAILS ONLY)
- CUSTOM SIZES AVAILABLE
- ALSO AVAILABLE IN T-304 OR T-316 S.STL. CONSTRUCTION

REQUIRED INFORMATION:

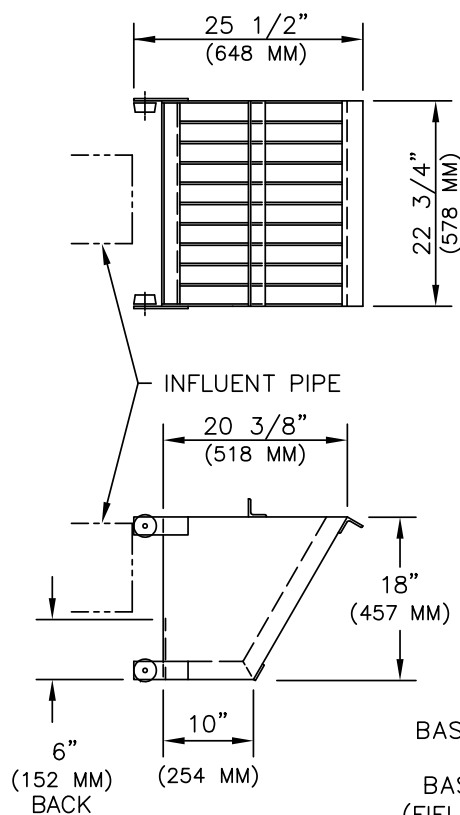
- BASIN DIAMETER
- RAIL LENGTH
- STANDOFF LENGTH (7" [178 MM] MIN. FOR LADDER COMBO)



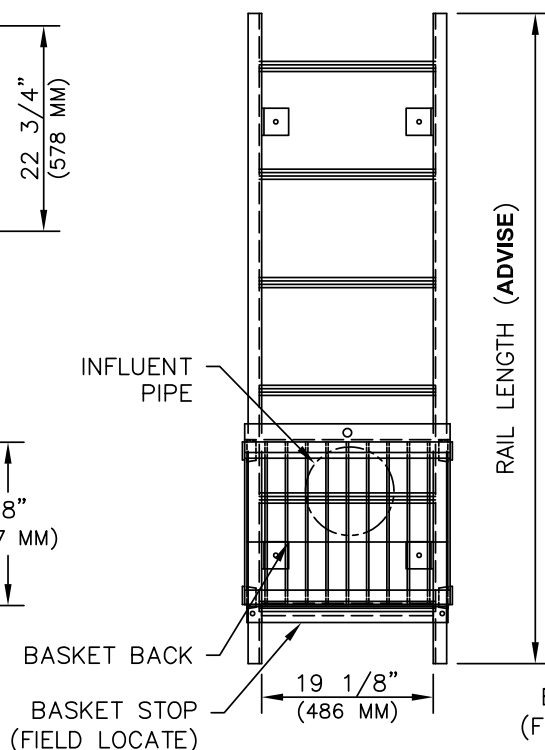
ROUND WALL MOUNTING



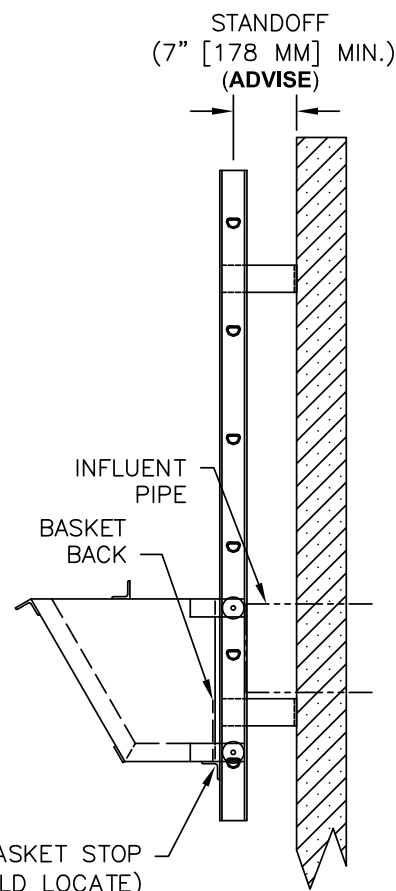
FLAT WALL MOUNTING



BASKET



BASKET AND RAILS



Slide and Stop Gates

STANDARD FEATURES:

- ONE-PIECE 6061-T6 EXTRUDED ALUMINUM FRAME
- ONE-PIECE POLYMER GUIDE
- 1/4" (7.62 MM) THICK REINFORCED AS
- 1/360th
- LOW
- DEF
- OPTIMUM
- (29 MM) S.S.T.L. TR
- LIFTING NUT
- POLYMER BEARING PADS
- STAINLESS STEEL HARDWARE
- NON-OZONE DEPLETING BITU
- COATING ON FRAME
- 3 YEAR GUARANTEE

Ø16" ALUM HAND



HALLIDAY

PRODUCTS

GATE

CHANNEL WIDTH (ADVISE)

(ADVISE)

(ADVISE)

SERIES G1A
MOUNTED

SERIES G1B
(EMBEDDED)

HP

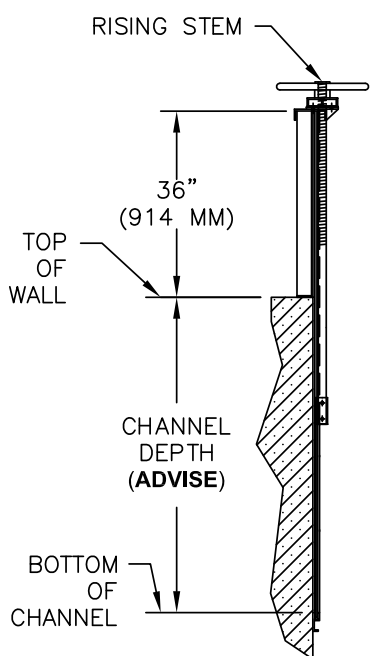
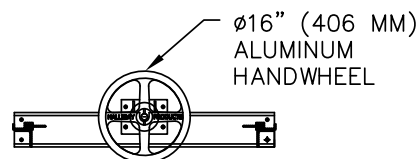
HALLIDAY PRODUCTS

Series G1A and G1B Slide Gates

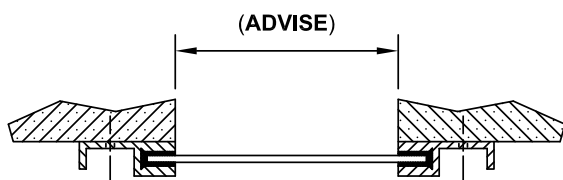
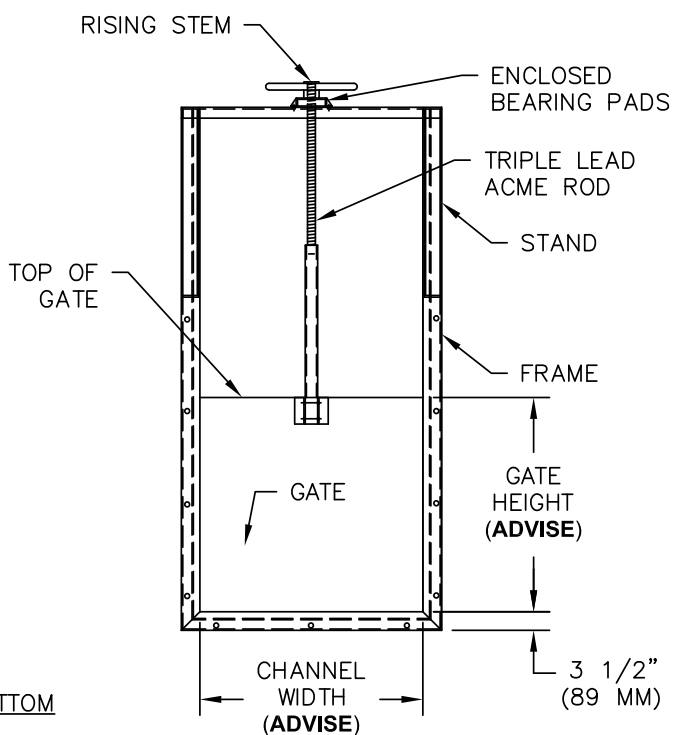


STANDARD FEATURES:

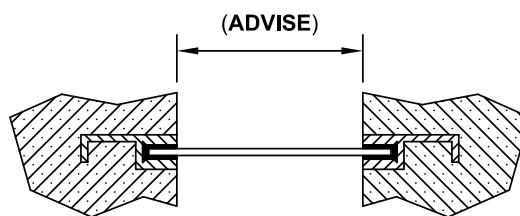
- ONE-PIECE 6061-T6 EXTRUDED ALUMINUM FRAME
- ONE-PIECE POLYMER GUIDE
- 1/4" (7 MM) THICK 6061-T6 ALUMINUM GATE REINFORCED AS REQUIRED TO DEFLECT NO MORE THAN 1/360th OF SPAN (5' MAX HEAD PRESSURE)
- LOW COEFFICIENT OF FRICTION
- DEEP SEATING FOR OPTIMUM TRACKING
- 16" (406 MM) DIAMETER ALUMINUM HANDWHEEL
- $\phi 1 \frac{1}{8}$ ($\phi 29$ MM) S.STL. TRIPLE LEAD ACME ROD
- BRASS LIFTING NUT
- POLYMER BEARING PADS
- STAINLESS STEEL HARDWARE THROUGHOUT
- NON-OZONE DEPLETING BITUMINOUS COATING ON FRAME
- OPTIONAL CLEAR STEM COVER
- 3 YEAR GUARANTEE



GATE BOTTOM



SERIES G1A
(WALL MOUNTED)



SERIES G1B
(EMBEDDED)

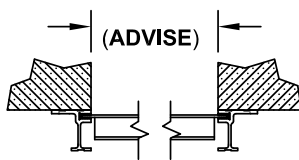
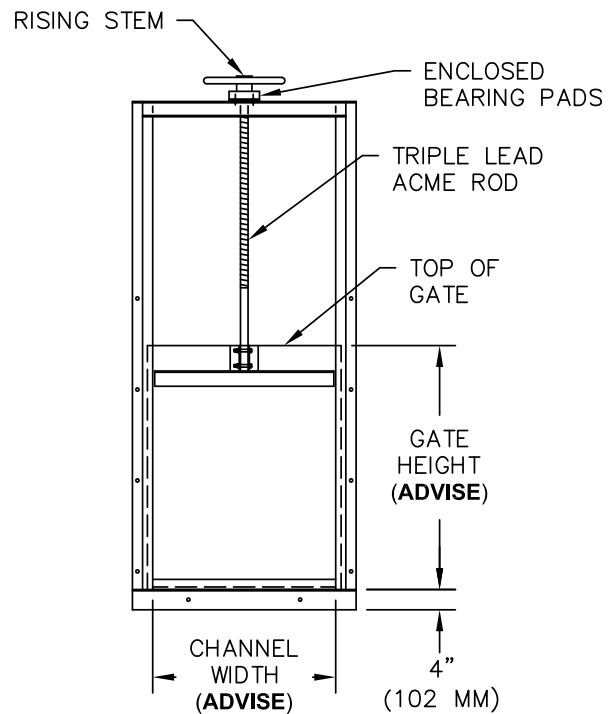
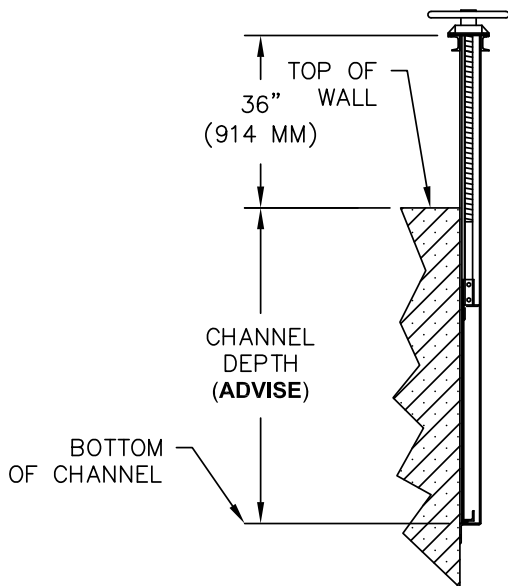
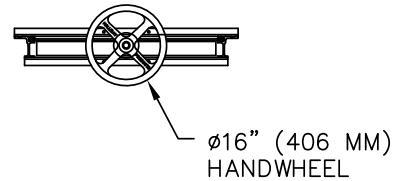
G1A & G1B SERIES R

Series G1D and G1E Slide Gates

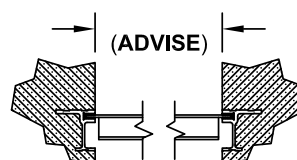
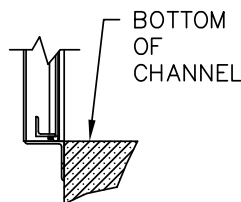


STANDARD FEATURES:

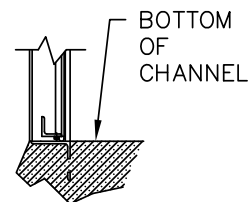
- ONE-PIECE 6061-T6 EXTRUDED ALUMINUM FRAME WEIGHING 4 LBS./FT. (6 KG/METER)
- DUAL SLOT DESIGN
- ONE-PIECE POLYMER GUIDE
- 1/4" (7 MM) THICK 6061-T6 ALUMINUM GATE REINFORCED AS REQUIRED TO DEFLECT NO MORE THAN 1/360th OF SPAN (5' MAX HEAD PRESSURE)
- LOW COEFFICIENT OF FRICTION
- DEEP SEATING FOR OPTIMUM TRACKING
- 16" (406 MM) DIAMETER ALUMINUM HANDWHEEL
- $\phi 1 \frac{1}{2}$ ($\phi 38$ MM) S.STL. TRIPLE LEAD ACME ROD
- BRASS LIFTING NUT
- POLYMER BEARING PADS
- STAINLESS STEEL HARDWARE THROUGHOUT
- NON-OZONE DEPLETING BITUMINOUS COATING ON FRAME
- OPTIONAL CLEAR STEM COVER
- 3 YEAR GUARANTEE



SERIES G1D
(WALL MOUNTED)



SERIES G1E
(EMBEDDED)



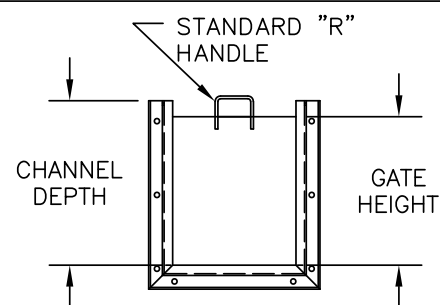
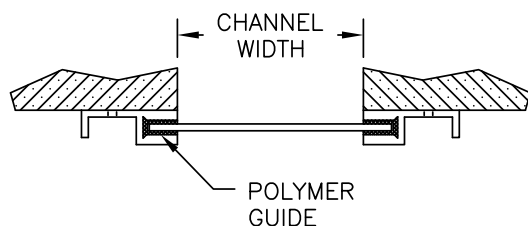
Series N1 Stop Gate



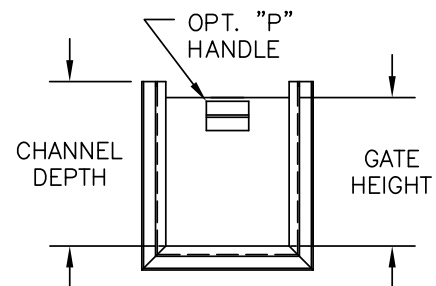
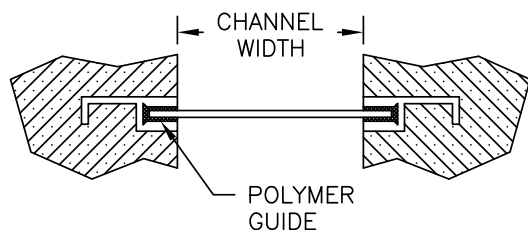
STANDARD FEATURES:

- ONE-PIECE 6061-T6 EXTRUDED ALUMINUM FRAME
- ONE-PIECE POLYMER GUIDE
- 1/4" (7 MM) THICK 6061-T6 ALUMINUM GATE REINFORCED TO DEFLECT NO MORE THAN 1/360th OF SPAN (5' MAX HEAD PRESSURE)
- LOW COEFFICIENT OF FRICTION
- NON-OZONE DEPLETING BITUMINOUS COATING ON FRAME
- DEEP SEATING FOR OPTIMUM TRACKING
- STANDARD "R" HANDLE OR OPTIONAL "P" HANDLE
- SERIES N1A AND N1C SUPPLIED WITH $\phi 9/16"$ (14 MM) MOUNTING HOLES AND 1/2" (13 MM) X 4" (102 MM) S.STL. WEDGE ANCHORS
- 3 YEAR GUARANTEE

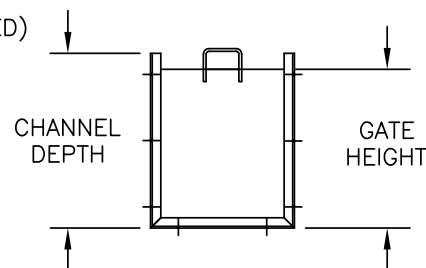
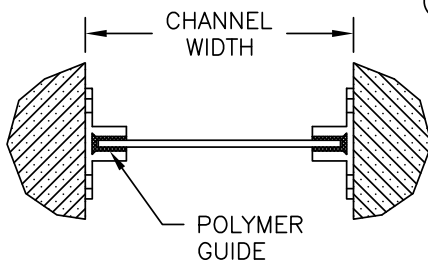
SERIES N1A
(WALL MOUNTED)



SERIES N1B
(EMBEDDED)



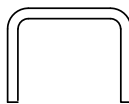
SERIES N1C
(IN-CHANNEL MOUNTED)



GATE BOTTOM



STANDARD
"R" HANDLE



OPTIONAL
"P" HANDLE



Guide Rail Brackets

STANDARD FEATURES:

- AVAILABLE IN TYPE 304 OR 316 STAINLESS STEEL
- SINGLE AND DOUBLE RAIL DESIGNS
- UPPER AND INTERMEDIATE BRACKETS AVAILABLE
- MANUFACTURED FOR ALL SUBMERSIBLE PUMP LINES
- MOST UPPER BRACKETS PROVIDED WITH NEOPRENE BUSHINGS WITH COMPRESSION STEMS

HALLIDAY PRODUCTS INC. MANUFACTURES A VARIETY OF STAINLESS STEEL UPPER AND INTERMEDIATE GUIDE RAIL BRACKETS THAT ARE USED ON ALL MAJOR SUBMERSIBLE PUMP LINES. PRICING AS WELL AS FIT AND ALIGNMENT INFORMATION IS REQUIRED.

UPPER BRACKETS:

- MANUFACTURER'S GUIDE RAIL SIZE
- GUIDE RAIL SPACING
- DISTANCE FROM FACE OF WALL TO CENTERLINE OF GUIDE RAIL
- T-304 OR T-316 STAINLESS STEEL

FOR INTERMEDIATE BRACKETS:

- DISCHARGE PIPE SIZE
- CENTERLINE OF GUIDE RAIL TO CENTERLINE OF DISCHARGE DIMENSION

UPPER GUIDE RAIL BRACKET



DOUBLE RAIL

SINGLE RAIL



DOUBLE RAIL

SINGLE RAIL



DOUBLE RAIL

SINGLE RAIL



DOUBLE RAIL

SINGLE RAIL



DOUBLE RAIL

SINGLE RAIL



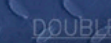
DOUBLE RAIL

SINGLE RAIL



DOUBLE RAIL

SINGLE RAIL



DOUBLE RAIL

SINGLE RAIL



DOUBLE RAIL

SINGLE RAIL



DOUBLE RAIL

SINGLE RAIL



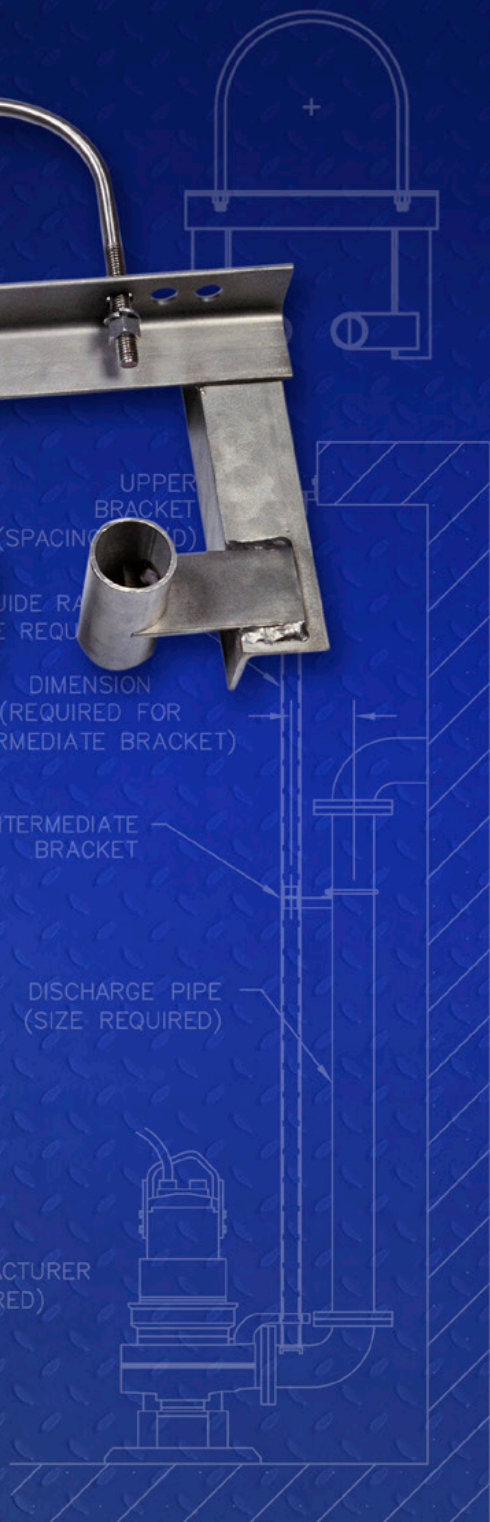
UPPER BRACKET (SPACING REQUIRED)

DIMENSION (REQUIRED FOR INTERMEDIATE BRACKET)

INTERMEDIATE BRACKET

DISCHARGE PIPE (SIZE REQUIRED)

PUMP MANUFACTURER (REQUIRED)



Series U Guide Rail Brackets



STANDARD FEATURES:

- AVAILABLE IN TYPE 304 OR 316 STAINLESS STEEL
- SINGLE AND DOUBLE RAIL DESIGNS
- UPPER AND INTERMEDIATE BRACKETS AVAILABLE
- MANUFACTURED FOR ALL SUBMERSIBLE PUMPS
- MOST UPPER BRACKETS PROVIDED WITH NEOPRENE BUSHINGS WITH COMPRESSION STEMS

HALLIDAY PRODUCTS INC. MANUFACTURES A WIDE VARIETY OF STAINLESS STEEL UPPER AND INTERMEDIATE GUIDE RAIL BRACKETS THAT ARE COMPATIBLE WITH ALL MAJOR SUBMERSIBLE PUMP LINES. TO INSURE PROPER PRICING AS WELL AS FIT AND ALIGNMENT, THE FOLLOWING INFORMATION IS REQUIRED:

FOR UPPER BRACKETS:

- PUMP MANUFACTURER
- GUIDE RAIL SIZE
- GUIDE RAIL SPACING
- DISTANCE FROM FACE OF WALL TO CENTERLINE OF GUIDE RAIL
- T-304 OR T-316 STAINLESS STEEL

FOR INTERMEDIATE BRACKETS:

- DISCHARGE PIPE SIZE
- CENTERLINE OF GUIDE RAIL TO CENTERLINE OF DISCHARGE DIMENSION

UPPER GUIDE RAIL BRACKET



SECTION



PLAN



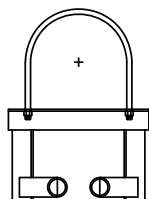
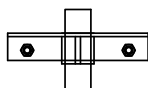
DOUBLE
RAIL

SINGLE
RAIL

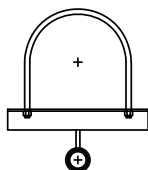
INTERMEDIATE GUIDE RAIL BRACKET



SECTION

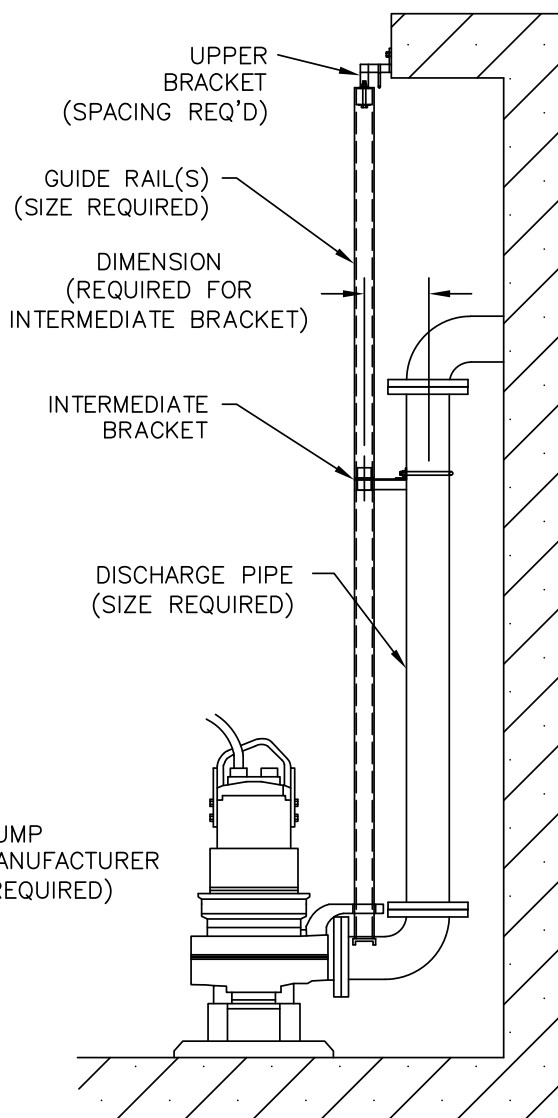


PLAN



DOUBLE
RAIL

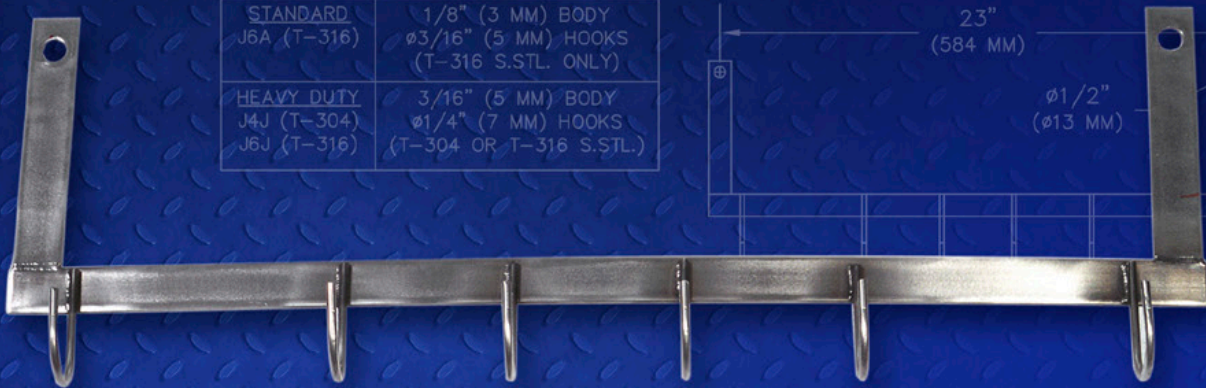
SINGLE
RAIL



Accessories

SERIES J CABLE HOLDER

MODEL	CABLE HOLDER
STANDARD J6A (T-316)	1/8" (3 MM) BODY Ø3/16" (5 MM) HOOKS (T-316 S.STL. ONLY)
HEAVY DUTY J4J (T-304) J6J (T-316)	3/16" (5 MM) BODY Ø1/4" (7 MM) HOOKS (T-304 OR T-316 S.STL.)



STANDARD FEATURES:

- STAINLESS STEEL CONSTRUCTION
- 6 HOOKS STANDARD — FOR FLOAT SWITCHES
- AVAILABLE STANDARD DUTY OR HEAVY DUTY

SERIES A ANCHOR BOLT

STANDARD FEATURES:

- TYPE 316 STAINLESS
- SPECIAL SIZES AVAILABLE



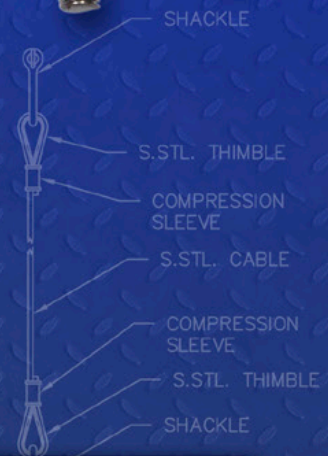
SERIES K-A CABLE ASSEMBLY

STANDARD FEATURES:

- TYPE 304 OR 316 STAINLESS STEEL CONSTRUCTION
- Ø1/4" (Ø7 MM) CABLE W/1285 LBS. (583 KG) SAFE LOAD
- VARIOUS HOOKS AND SHACKLES AVAILABLE
- ALSO AVAILABLE IN Ø3/16" (Ø5 MM)



1 TON SAFETY HOOK



HP

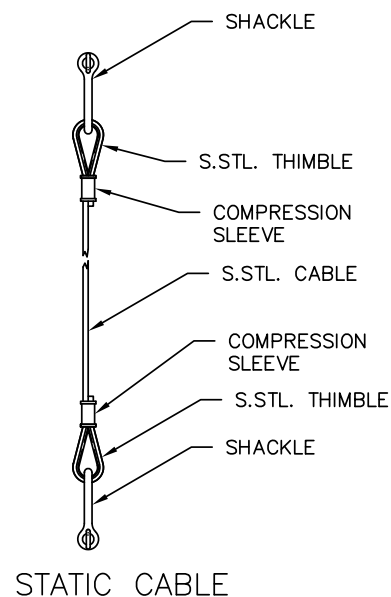
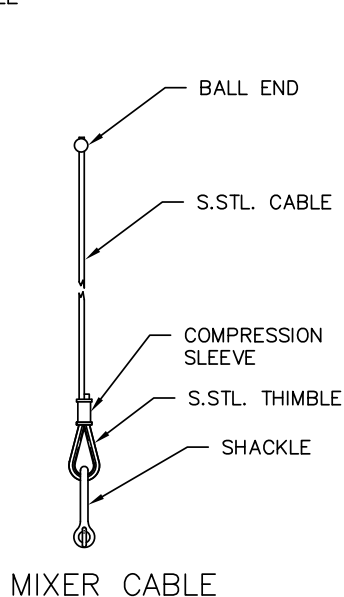
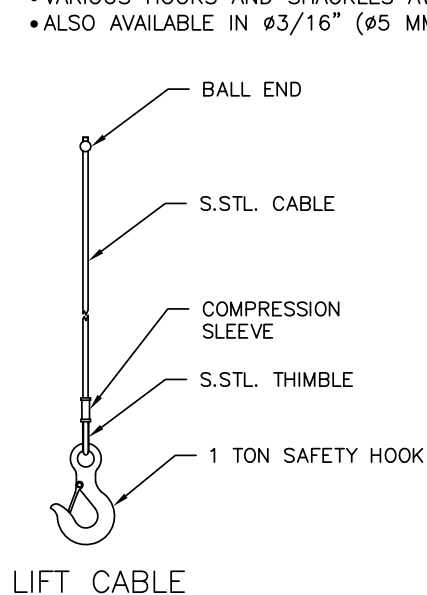
HALLIDAY PRODUCTS

Series K4A Cable Assembly



STANDARD FEATURES:

- TYPE 304 OR 316 STAINLESS STEEL CONSTRUCTION
- $\phi 1/4"$ ($\phi 7$ MM) CABLE W/1285 LBS (583 KG) SAFE LOAD
- VARIOUS HOOKS AND SHACKLES AVAILABLE
- ALSO AVAILABLE IN $\phi 3/16"$ ($\phi 5$ MM)

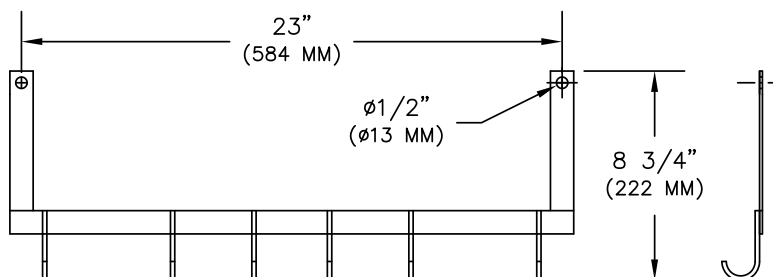


SERIES J CABLE HOLDER

MODEL	CABLE HOLDER
STANDARD J6A (T-316)	1/8" (3 MM) BODY $\phi 3/16"$ (5 MM) HOOKS (T-316 S.STL. ONLY)
HEAVY DUTY J4J (T-304) J6J (T-316)	3/16" (5 MM) BODY $\phi 1/4"$ (7 MM) HOOKS (T-304 OR T-316 S.STL.)

STANDARD FEATURES:

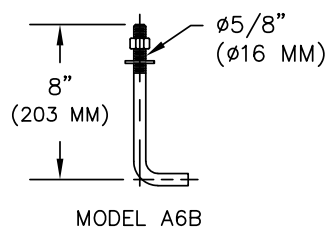
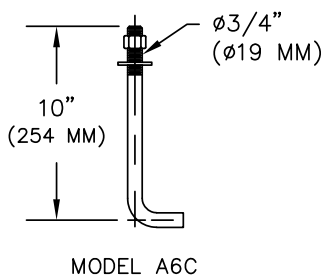
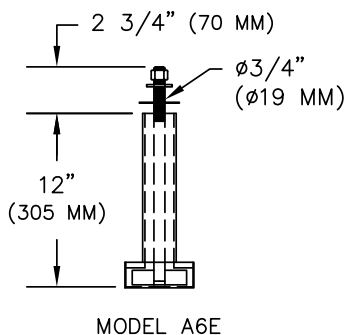
- STAINLESS STEEL CONSTRUCTION
- 6 HOOKS STANDARD – FOR FLOAT SWITCHES
- AVAILABLE STANDARD DUTY OR HEAVY DUTY



SERIES A ANCHOR BOLT

STANDARD FEATURES:

- TYPE 316 STAINLESS STEEL CONSTRUCTION
- SPECIAL SIZES AVAILABLE



**A few of the places
our products can be found...**



www.HallidayProducts.com

[illegible]

STANDARD FEATURES:

- TYPE-304 STAINLESS STEEL CONSTRUCTION
- 30 FEET (9.14 METERS) OF STAINLESS STEEL CABLE
- GALVANIZED 1 TON (907 KG) HOOK
- STAINLESS STEEL BRAKE WINCH
- ADJUSTABLE REACH IN 1" (25 MM) INCREMENTS

OPTIONS:

- TYPE-316 CONSTRUCTION
- ADDITIONAL CABLE AVAILABLE (SPECIFY LENGTH)
- ADDITIONAL WINCHES AVAILABLE
- STAINLESS STEEL HOOK
- OTHER REACHES AVAILABLE UPON REQUEST (CONSULT FACTORY)
- STAINLESS STEEL WINCH ASSEMBLY

ADJUSTABLE REACH
24" — 36"
(610 MM — 914 MM)

(STANDARD)

30FT (9.14 M)
S.S.T.L. CABLE

1 TON
HOOK

STATIC
LOOP

LIFT HEIGHT @ REACH

SAFETY

HP

HALLIDAY PRODUCTS

6401 EDGEWATER DRIVE
ORLANDO, FLORIDA 32810

800-298-1027
407-298-4470

www.HallidayProducts.com
sales@HallidayProducts.com

T-316 STAINLESS STEEL

