

The MARATHON

Marathon Coach Magazine - SPRING 2026

10

Luxury in Motion

Coach #1412 Spotlight



Audio/Video Tech

Upgrades for your Marathon

8

Click & Drag, Scroll or use the
Arrow Keys to navigate!



Table of

10

Coach Showcase: #1412

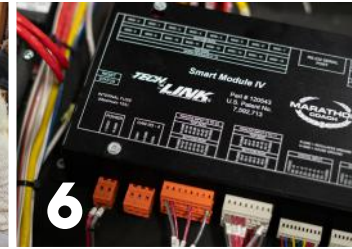
An in-depth look inside a Marathon

Contents

Coach #1412 Spotlight - Page 10

The MARATIME SPRING 2026

- 5** Message from the Club
- 6** TechLink: Connecting Your Coach
- 8** A/V Tech Service Upgrades
- 10** Coach 1412 Spotlight
- 14** Rally Registration Form
Sign up for Marathon Coach Club rallies online
- 16** Coach Showcase
Find out more about our current inventory listings



The MARATIME

Follow Along

Discover the latest from Marathon Coach, from coach showcases and service expertise to Club Rallies and exclusive events. Click the links below to join the conversation.



marathoncoach.com



facebook.com/marathoncoach



instagram.com/marathoncoachhq



youtube.com/marathoncoach1



pinterest.com/marathoncoach1

MARATHON
mondays with *Mal*

facebook.com/marathonmal

EXECUTIVE PUBLISHER

Steve Schoellhorn

CONTENT WRITERS

Dick Baltus

Ed Cheeney

EDITOR

Sara Fideler

GRAPHIC DESIGNER

Laurel Bruce

CLUB-RELATED QUESTIONS

Lydia Admire

Office Administrator

(800) 234-9991

(541) 343-9991

email:

LydiaA@marathoncoach.com

MARATHON BOUTIQUE

Katelyn Thiel

(800) 234-9991

email:

KatelynT@marathoncoach.com

SPECIAL THANKS

TO ALL OF OUR

Contributors

THIS ISSUE



Message from the Club

By Marathon Club President, Ed Cheeney

Dear MCCI Family,

If there were frequent flyer miles for friendships, laughter, and unforgettable memories, every single one of us would be traveling first class for life. Marathon Coach Club International truly is the best motorhome club in the galaxy—and yes, we’ve checked... no other planet comes close.

Jan and I want to start by saying thank you. Thank you to each and every member for making this club not just a group, but a family. The experiences we’ve shared—rolling across the North American continent in our outofthisworld Marathon coaches—are priceless. Where else can you wake up in a luxury motorhome, have coffee with friends you didn’t know last year, and somehow still end the day saying, “I laughed so hard my cheeks hurt”?

Traveling to our rallies deserves special mention, because let’s be honest—getting there is half the fun. With our Marathon coaches (beautifully built on Prevost chassis), the journey is smooth, dependable, and just a bit bragworthy. A huge thank you to Prevost and Marathon for creating the ultimate touring machines. Without them, we’d still have great friends—but far fewer cupholders and way less airconditioned happiness.

In Paso Robles, California, 78 Marathon Club members gathered to reconnect with old friends and welcome new ones—proof once again that nobody was ever “new” for more than about five minutes. By the time you’re reading this, we will have already blasted through yet another fantastic rally filled with laughter, stories, and memories that somehow sound even better every time we retell them.

Our week was packed tighter than a full basement storage bay:

Firsttimers, their buddies, and board members kicked things off with a predinner social in the Pavilion (also known as the “how many rallies have YOU been to?” zone). As the sun dipped behind the Paso hills, Sensorio lit up the night—an immersive experience that made us all feel like we’d accidentally driven into another universe.

Highlights included visits to Hearst Castle, the Elephant Seal Rookery, coastal lunches at Cambria Pines Lodge, Fiscalini Ranch Preserve, the Warbird Museum, wine tastings at Caelesta Vineyard, a Paso Robles wine tour (purely educational, of course), a stainedglass class at Through Eyes of Glass, and unforgettable dinners at the Madonna Inn, Sirena Resort and Winery, and our private farewell celebration at Cass Winery’s Barrel Room—where goodbyes were said, plans were made, and nobody actually wanted to leave.

Looking ahead, be sure to keep our Fall 2026 Rally at The Ridge in Sevierville, Tennessee on your calendar. Another great time awaits—and yes, more memories are guaranteed.

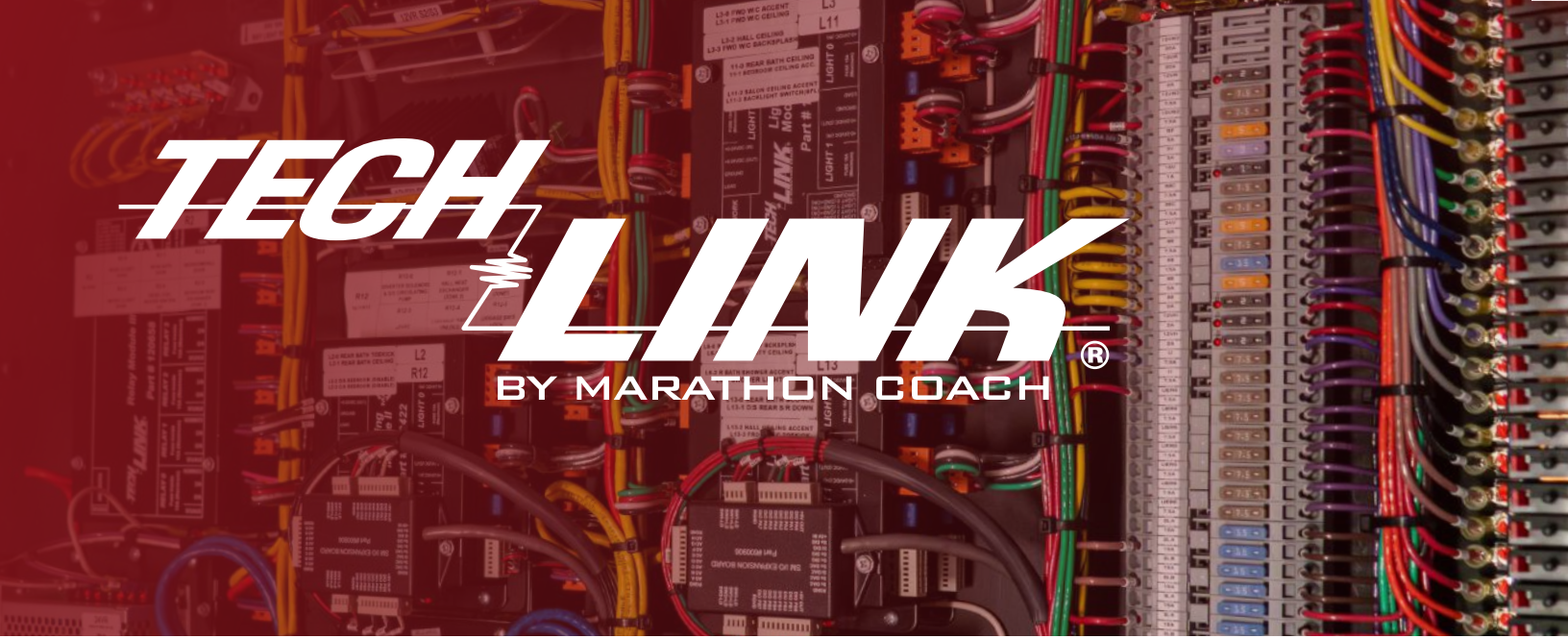
Finally, a huge thank you to Lydia, Hannah, our Board, and the many volunteers who make every rally possible. You are the behind-the-scenes heroes who keep this club rolling smoothly.

With Warmest Regards,
Good Night & Good Luck,

Ed Cheeney

President
Marathon Coach Club International





TECH LINK[®]

BY MARATHON COACH

Connecting Your Coach

Leading the industry with proprietary tech

Inside the walls of every Marathon Coach is a complex network of wires, switches, modules and the myriad other components required to power the electrical systems of the most advanced luxury motor coach on the road.

As impressive as this behind-the-scenes technology is, however, we understand that our clients aren't terribly concerned about how the many electrical features of their coaches work. What's important to them is that those features do work without fail, whether they're flipping a switch, adjusting a slider or touching a screen. To ensure we always meet our clients' needs for reliability and ease of use, almost 20 years ago Marathon engineers developed proprietary software to control key electrical systems in all Marathon Coaches. Called Techlink, the software enables our clients to intuitively control their coaches' key electrical systems through onboard displays and connected devices.

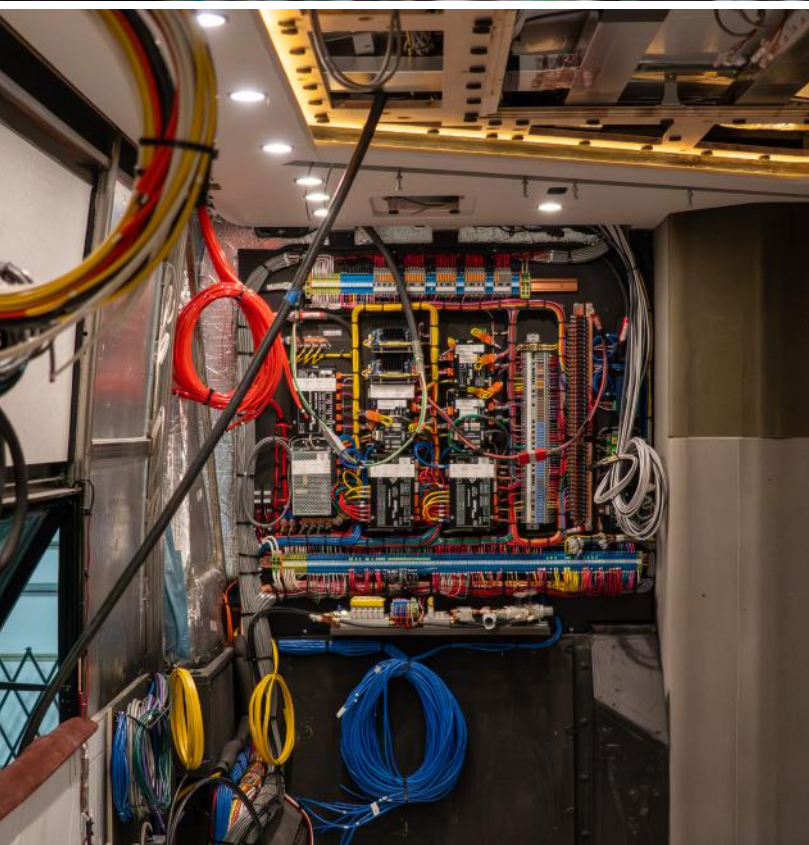
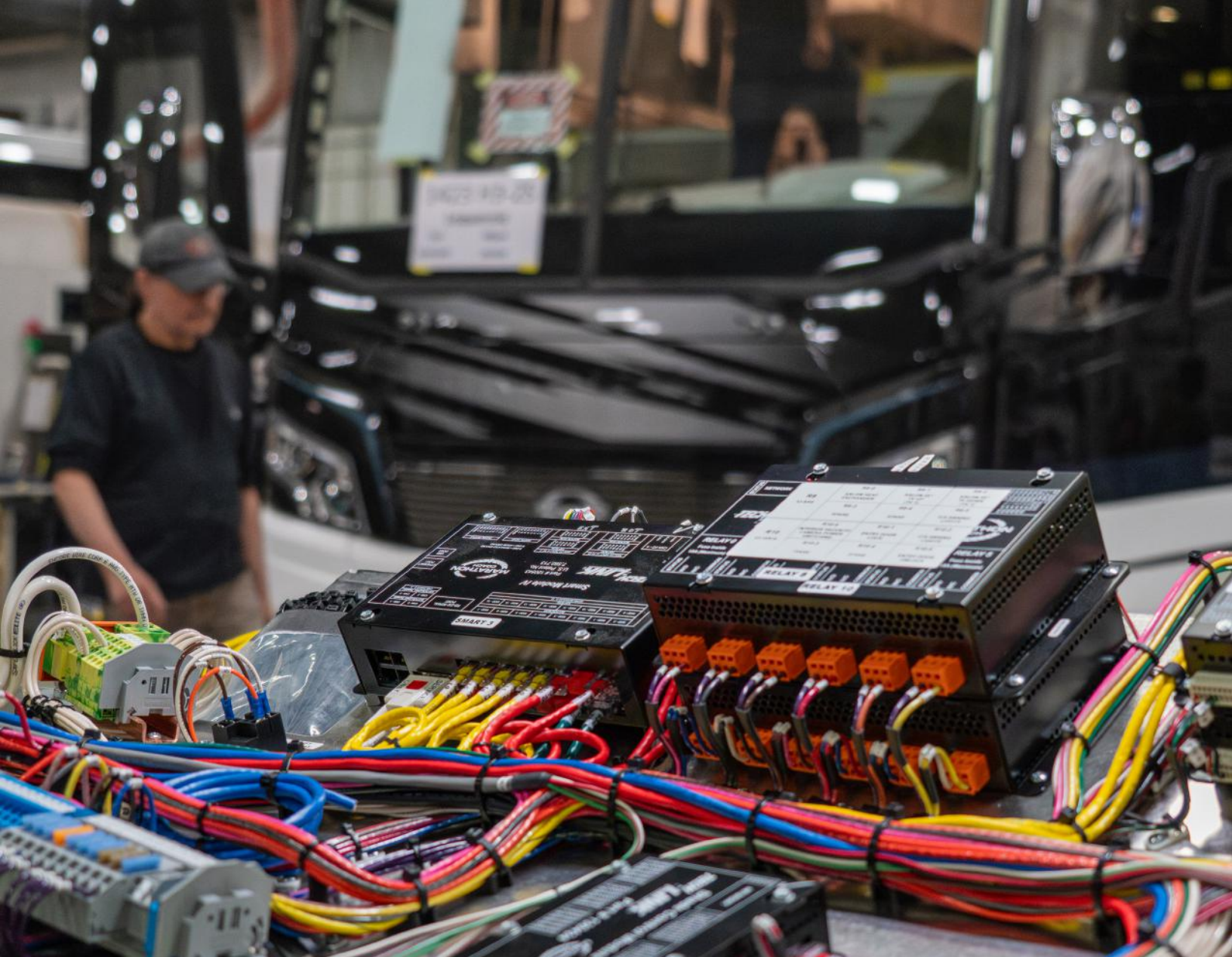
Techlink's many advantages include the ability to customize its features to meet clients' specific

wishes and needs, says Kent Clark, who manages the software and customizes it as needed for each new owner.

"New customers will tell our engineering department how they would like to control, for example, their coach lighting," Clark says. "They may want dimmers versus switches or have ideas for how and where they want to control colors or backlighting. That gets passed on to me, and I'll customize the software accordingly."

Advanced and flexible as the software is, its general purpose is fairly basic, says Mark Bryan, who oversees production and engineering at Marathon.

"It basically turns things on and off, whether it's lights or the water pump," he says. "But it does that in a way that's easy for the customer to use and highly reliable. It's one of those things that just works. So our customers feel confident knowing they can rely on it whether they're traveling or parked." 🐾





SERVICE UPGRADES



Audio/Visual Tech Service Upgrade Feature

Updating the audio and visual features in your coach can be a simple way to bring a more current feel to your time on the road. With the right combination of technology and thoughtful installation, it is possible to enhance comfort and entertainment while preserving the clean, refined interior Marathon owners appreciate.

Many owners begin with television and sound improvements. Premium sound bars for the salon and bedroom can offer a richer listening experience, supported by wireless subwoofers that add depth without taking up space. Installations are designed to keep wiring out of sight, with custom mounting that blends naturally into the coach.

Stereo and speaker upgrades can extend that experience throughout the interior and exterior. Updated systems with touchscreen displays make control more intuitive, while Bluetooth and Wi Fi streaming allow easy access to music and media. Multi zone audio gives you the flexibility to enjoy different sound levels or sources depending on where you are in the coach.

For those interested in streaming, Apple TV integration can be added to one or multiple screens. This allows smooth switching between satellite, streaming services, and personal media, all within a clean, discreet setup that keeps components and cabling hidden from view.

When travel takes you beyond reliable connectivity, Blu ray and 4K UHD players offer a dependable way to enjoy movies and shows offline. These systems can be integrated with your existing TVs and audio, making them a practical addition for longer trips.

Some owners also choose to incorporate gaming or console setups, with dedicated HDMI inputs, secure mounting, and organized cable management to keep everything in place.

Each upgrade can be tailored to suit your preferences and how you use your coach. If you have something in mind, the Marathon Service Department can help you explore the possibilities and design a solution that fits seamlessly into your space. 📍

Call our experts to schedule an appointment for your coach today.

TEXAS

800-448-8881

OREGON

800-365-0156

FLORIDA

800-437-8295



MARATHON COACH

#1412





THE GEOMETRY OF GRANDEUR

In the world of luxury travel, the true measure of a vehicle is not merely its ability to move, but its capacity to transport the spirit. When Marathon Coach 1412 rolls into a premier resort, it does more than arrive. This 2026 Prevost X3-45 makes an architectural statement, asserting a presence that is both bold and impeccably refined. The exterior is a masterclass in chromatic precision, featuring an interlocking geometric pattern in a striking palette of vibrant red, deep crimson, and obsidian. As the sun catches the mirror-like polish of the stainless steel, the Escher-esque linework seems to dance across the X-Model body, while black fender flares and polished chrome hubcaps ground the design in classic masculine elegance.

The lifestyle afforded by such a machine begins long before one steps inside. True luxury is

found in the ability to command the environment, transforming a secluded canyon or a coastal bluff into a private terrace. The Girard Nova Awning extends to provide a vast canopy of shade, creating an outdoor salon perfect for hosting. One can easily imagine an evening spent entertaining guests with a curated playlist or a film on the swiveling 50-inch 4K television as the ground-effect lighting casts a soft, welcoming glow against the pavement. With Starlink In-Motion high-speed Wi-Fi, the world remains at your fingertips, whether you are streaming a live gallery opening from London or finalizing a business merger from the comfort of a folding lounge chair.

Crossing the threshold into the salon reveals an interior that rivals the world's most exclusive





boutique hotels. The aesthetic is one of balanced tranquility, defined by matte Shadow cabinetry and Cashmere walls that provide a soft, tactile backdrop to the journey. Underfoot, Carrara-textured porcelain tile runs the length of the coach, offering the timeless look of Italian statuary marble with the modern indulgence of radiant floor heating. This is a space designed for the art of the “slow live,” where one might sink into the plush leather recliner to enjoy a quiet morning coffee or gather friends for a cinematic experience using the 50-inch theater screen positioned above the cockpit.

Culinary endeavors are elevated in a galley that prioritizes both form and high-capacity function. The kitchen is anchored by a remarkable pantry featuring 12 deep-sliding drawers

crafted with traditional dovetail joinery, offering ample space to tuck away high-end appliances behind elegant pocket doors. When it is time to host a dinner party, the Fisher & Paykel suite provides every residential convenience, from the expansive refrigerator to the discreet dishwasher. The social heart of the coach is the expandable dinette, which adapts at the touch of a button to accommodate extra guests, while the swiveling table surface allows the space to transition effortlessly from a formal breakfast nook to a workspace with a view.

The journey through the coach concludes in the rear suite, a private sanctuary of layered textiles and thoughtful utility. The adjustable king bed is dressed in a sophisticated mix of jacquard velvets and plush throws, positioned

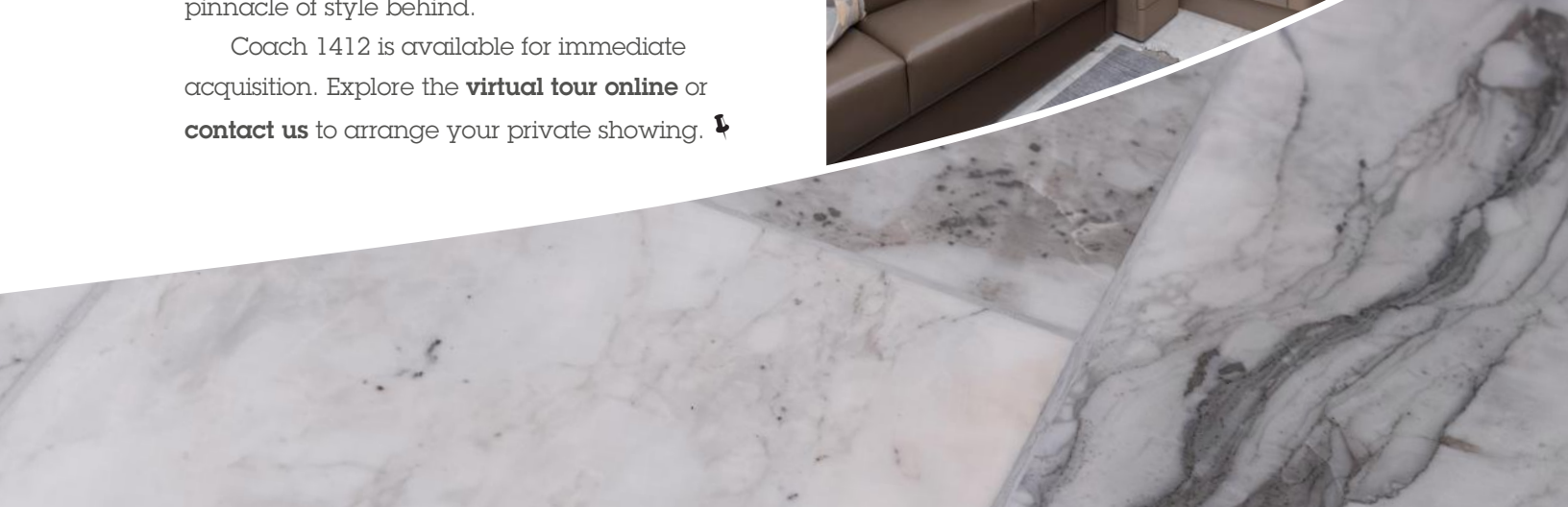


[CLICK HERE TO VIEW THE OFFICIAL COACH VIDEO!](#)



for optimal viewing of the bedroom television or easy movement when the slides are retracted. This retreat is supported by a mid-ship bathroom featuring a porcelain-tiled shower with a rainfall fixture and a temperature-sensing valve to ensure consistent comfort. With a spacious walk-in closet and a private, stacked washer and dryer, the suite functions as a self-contained residence. Coach 1412 is a declaration of independence for the modern traveler, offering the freedom of the open road without ever asking its owner to leave the pinnacle of style behind.

Coach 1412 is available for immediate acquisition. Explore the [virtual tour online](#) or [contact us](#) to arrange your private showing. 📍



Rally Regis

2026 Coburg, OR

June 18th - 23rd, 2026

The Marathon Coach Factory Pacific Shores RV Resort

Marathon Coach Club Mini-Rally

Begin at Marathon HQ with a factory tour, McKenzie River excursions, and a TrackTown USA visit, then head to Pacific Shores to explore Oregon's coastline.



2026 Bristol, TN

September 17th - 19th, 2026

Bristol Motor Speedway

Marathon Coach Club Mini-Rally

Rev your engines for the 2026 Bristol Mini Rally at the legendary Bristol Motor Speedway. A high energy weekend for Marathon Coach owners & enthusiasts.

RALLY REGISTRATION CLOSED



2026 Sevierville, TN

October 2nd - 9th, 2026

The Ridge Outdoor RV Resort

Celebrate fall in the Smoky Mountains with scenic drives, Southern hospitality, and crisp mountain air. This rally offers community connection and memorable views from The Ridge Outdoor Resort.



stration

MARATHON COACH

Marathon Coach Club: Rally Registration Form

[Redacted]

[Redacted]

[Redacted]

[Redacted]

[Redacted]

[Redacted]

[Redacted]

[Redacted]

[Redacted]

[Redacted]

[Redacted]

CLICK HERE TO REGISTER

Deposits are **\$150 per rally** and are **non-refundable**.

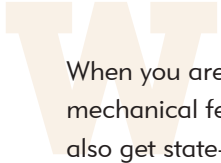
After submitting this form, you will receive a follow-up email from our Club Coordinator, Lydia Admire, which will include a QuickBooks invoice for your rally fees and Club dues. All payments can be made online at your convenience.

Rally fees are due 60–90 days before the event, depending on the rally. A reminder will be sent before payment is due.

Questions? 800-234-9991 | LydiaA@marathoncoach.com



Coach Showcase



When you are looking for a Prevost bus conversion, come to Marathon Coach. With a Prevost chassis, you get superior mechanical features, outstanding engine performance and exceptional road dynamics. With Marathon Coach you also get state-of-the-art technology and luxurious accommodations, whether you choose a new or pre-owned coach.

Our Prevost bus conversions are handcrafted works of art. Marathon Coach produces luxury bus conversions on the unparalleled Prevost H3-45 and X3-45 chassis models. Why settle for anything less than a Marathon?

AVAILABLE NOW



#1421 | 2026 Marathon

Double Slide-Out X3-45

TOP FEATURES:

- Expanding Dinette
- Temperature-Sensing Shower Valve
- Star Link RV In Motion
- Girard Nova Awning Package
- 50" 4K LED TV in Underbelly Entertainment Center

AVAILABLE NOW



#1405 | 2026 Marathon
Double Slide-Out X3-45

TOP FEATURES:

- Adjustable Reclining King Bed
- Four Roof Air Conditioners



- L-Shaped Leather Dinette
- Fisher Paykel Refrigerator
- Fireplace Insert in the Salon

AVAILABLE NOW



#1414 | 2026 Marathon
Double Slide-Out H3-45

TOP FEATURES:

- Large Rear Wardrobe
- Temperature-Sensing Shower Valve



- Girard Automatic Awning Package
- Patented Freedom-Plus Sewer System
- Patented TechLink Electrical System

AVAILABLE NOW



#1412 | 2026 Marathon
Double Slide-Out X3-45

TOP FEATURES:

- Fireplace Insert in Salon
- EXPEL Front Protective Shield



- Patented Freedom-Plus Sewer System
- 50" 4K LED TV in Underbelly Entertainment Center
- Four Roof Air Conditioners

PENDING SALE



#1418 | 2026 Marathon

Quad Slide-Out H3-45

TOP FEATURES:

- L-Shaped Dinette with Fabric Back
- 50" LED Backlit LCD in the Salon & Bedroom
- Radiant Heated Flooring Throughout
- Girard Automatic Awning Package
- Asko Stack Washer Dryer in Rear Closet

AVAILABLE NOW



#1288 | 2019 Marathon

Double Slide-Out H3-45

TOP FEATURES:

- Bunk Bed with A/V System (iPad in each bunk)
- 49" Samsung 4K LED TV in Bedroom
- "Amtico" Vinyl Flooring in Storage Bays
- Fireplace Insert in Salon
- Backlit Glass Sinks at both Vanities

PENDING SALE



#1309 | 2020 Marathon
Double Slide-Out H3-45

TOP FEATURES:

- Parquet Tile Throughout Coach
- 49" Samsung 4K LED TV in Bedroom



- Ground Effects Lighting (RGB)
- Convertible Wardrobe to Bunk Beds
- Girard Nova Awning Package

AVAILABLE NOW



#1341 | 2022 Marathon
Quad Slide-Out H3-45

TOP FEATURES:

- Liquid Crystal Privacy Glass Shower Door
- Fisher & Paykel Induction Cooktop



- Apple TV Integration
- Appliance Center with Miele Coffee Center, Combi-Steam Oven and Liebherr Wine Cooler

AVAILABLE NOW



#1367 | 2024 Marathon
Quad Slide-Out H3-45

TOP FEATURES:

- Solid Bamboo Planking Throughout
- 50" LED Backlit LCD in the Bedroom



- Fisher and Paykel Induction Cooktop
- Liquid Crystal Privacy Glass Shower Door
- Leather Recliners, Sofa and Dinette Seating

PREVOST
THE ULTIMATE EXPERIENCE



**EVERY MILE
FEELS LIKE THE
RIGHT DECISION.**

| prevostmotorhomes.com