

# TAHITI & ISLANDS OF FRENCH POLYNESIA 2026-2027

## Society Islands 11-Nights Cruise

- All year round aboard the 25-cabin M/S Panorama II
- Society Islands 11-Nights Cruise Adventure

upd24mar26



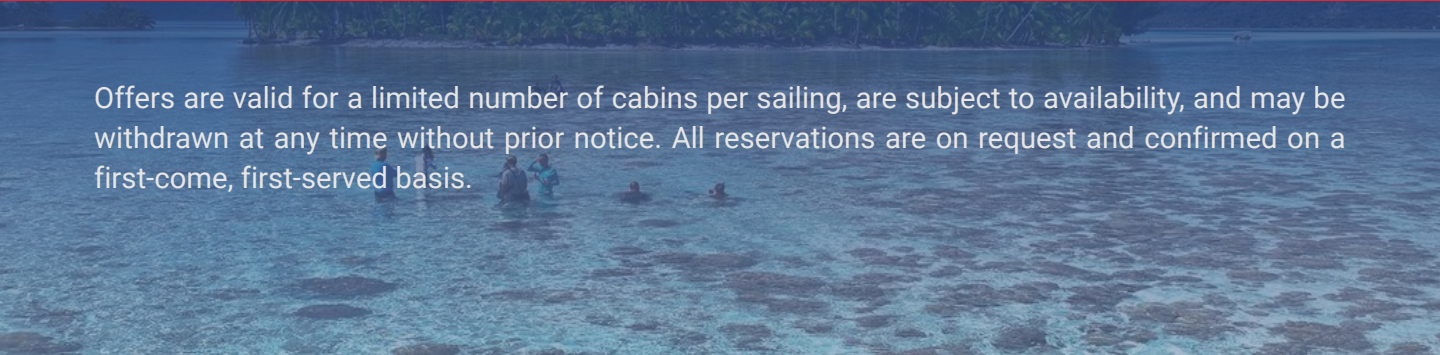
# TAHITI & ISLANDS OF FRENCH POLYNESIA

**SAVE  
\$1,270**

**LIMITED-TIME OFFER**  
**BOOK BY MAY 22**

**Up to 20% OFF + 2 FREE Shore Excursions !**

Offers are valid for a limited number of cabins per sailing, are subject to availability, and may be withdrawn at any time without prior notice. All reservations are on request and confirmed on a first-come, first-served basis.

A photograph of a tropical beach scene with people swimming in the water. The water is clear and blue, and there are palm trees and a small island in the background.



# AT A GLANCE

Embark on an extraordinary voyage with Variety Cruises and immerse yourself in the splendor of French Polynesia's exquisite islands. Tahiti and Bora Bora stand as epitomes of paradise, boasting pristine beaches and an atmosphere steeped in romance. These idyllic havens offer the perfect setting for intimate moments, with their verdant landscapes and enchanting lagoons that inspire hand-in-hand strolls. Meanwhile, the heart-shaped sanctuary of Mo'orea beckons adventurers, serving as a captivating gateway to explore its vibrant barrier reef. And on the sacred shores of Huahine, partake in a profound local tradition by feeding the majestic eels—an experience that encapsulates the essence of Polynesian culture. Join us on this unparalleled journey, where memories forged will be cherished for a lifetime.

Highlights include:

**Bora Bora - Moorea - Huahine - Taha'a - Raiatea**

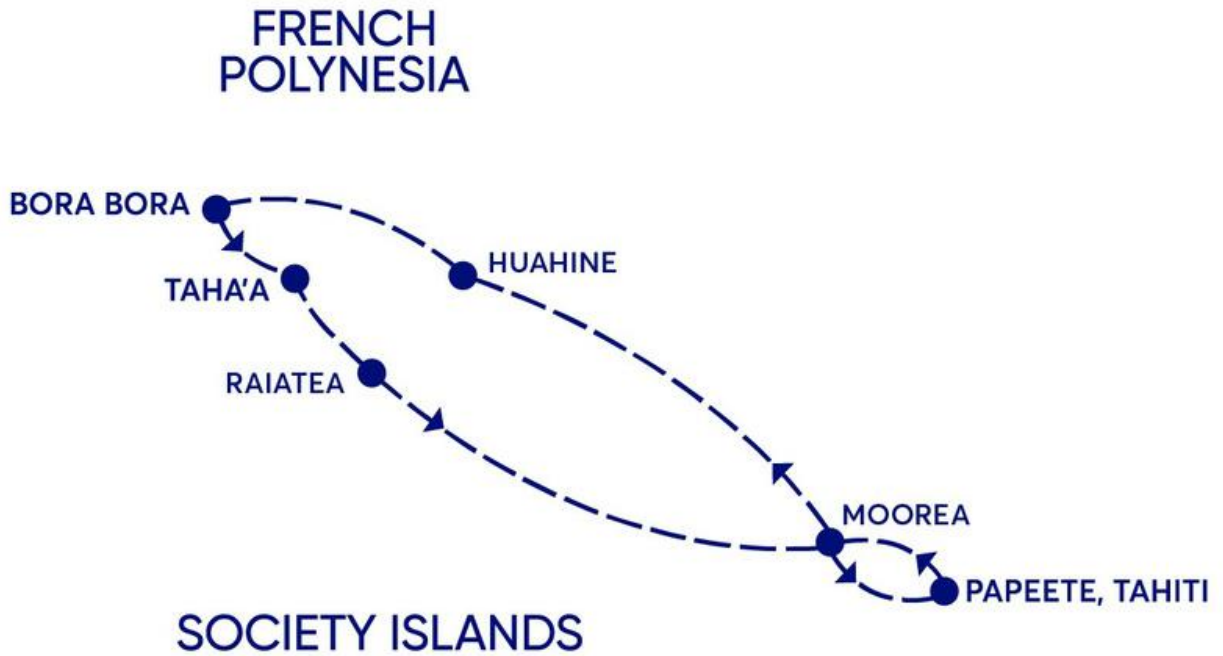


updated Apr 10, 2024

# TAHITI & ISLES OF FRENCH POLYNESIA

## SOCIETY ISLANDS 11-NIGHTS CRUISE ADVENTURE

### ON THE M/S PANORAMA II | 2026-2027



#### DAY 1 - PAPEETE, TAHITI

Your adventure begins at the picturesque Papeete port, Society Islands, where you'll board the sleek beauty M/Y Panorama II. Boarding Time : 3pm

As you step on board, immerse yourself in a world of ambience and hospitality with a gracious welcome, a refreshing drink, and a delectable Welcome Dinner that sets the perfect tone for your journey ahead. As twilight descends, we'll bid farewell to Papeete and set sail for the enchanting island of Moorea.

#### DAY2 - MOOREA, SOCIETY ISLANDS

Moorea, often referred to as "The Magical Island", is said to have been the muse behind the mythical Bali Hai from James Michener's Tales of the South Pacific, and it stands as one of the most breathtaking gems in French Polynesia.

As we lay at anchor in Moorea, you will enjoy swimming, snorkeling and watersports from our swimming platform in her beautiful sapphire waters! A delicious lunch will boost your energy for your afternoon exploration of the island!

Join us on an enchanting 3.5-hour island tour (optional) where your knowledgeable guide will regale you with captivating tales of Moorea's rich history, vibrant culture, and diverse ecology. Traverse through the lush Opunohu Valley, ascend the slopes of Mt. Tohi'e'a, and meander past the picturesque Cook's and Opunohu Bays.

After this delightful tour, relish in some free time to explore Moorea at your leisure before we set sail for our next destination, Huahine.

# TAHITI & ISLES OF FRENCH POLYNESIA

## SOCIETY ISLANDS 11-NIGHTS CRUISE ADVENTURE

### ON THE M/S PANORAMA II | 2026-2027



#### DAY 3 – HUAHINE

Huahine, often likened to the mythical Garden of Eden, emerges as a vast tropical paradise teeming with life. Its lush expanses are adorned with coconut groves, vanilla orchids, banana plantations, breadfruit trees, and sprawling watermelon fields, creating a tapestry of vibrant colors and fragrant scents.

Today offers the freedom to explore Huahine at your own pace or partake in our meticulously crafted optional Private Motu Picnic and Snorkeling tour: Board the comfortable, traditional outrigger canoe for a cruise to Huahine. Along the way your guides will share the island's history, sacred legends and provide insight into island life. Then there is a stop in the coral gardens for snorkeling among the many species of tropical fish. After working up a good appetite, you will enjoy a delectable picnic on a white, sandy motu. On the way back stop at the aquarium to meet the fish and reef sharks. Overnight in Huahine.

#### DAY 4 – HUAHINE

A single day scarcely does justice to the allure of Huahine!

Today, you have the freedom to explore Huahine at your leisure or opt for our optional tour taking us in many of the island's temples and small villages offering a chance to see and feed the sacred blue-eyed eels of Faie Bay, as well as visit a vanilla plantation. If you're a keen cook, we recommend you purchase vanilla beans while here; you won't find tastier - or cheaper! - versions elsewhere. Overnight at sea to Bora Bora.

#### DAY 5 - BORA BORA

Without a doubt, Bora Bora reigns supreme as the crown jewel of the South Pacific, holding the spotlight as French Polynesia's undisputed star.

Today, we've arranged for you to experience the essence of Bora Bora with a unique excursion aboard Le Truck, a vibrant journey lasting approximately 2.5 hours (optional). Climb aboard this colorful chariot as it guides you through Bora Bora's picturesque landscapes. Immerse yourself in the rich tapestry of Tahitian history, traditions, and cultures as your knowledgeable guide narrates the 22-mile road encircling this legendary island. Explore the villages of Farepiti, Faanui, and Anau, each adorned with ancient "Marae" shrouded in mystery.

And as your adventure unfolds, be captivated by the breathtaking vistas from Matira Point, a vantage point offering unparalleled panoramas of paradise. Overnight in Bora Bora.

#### DAY 6 – BORA BORA

One mere day in Bora Bora simply doesn't suffice! As you descend, camera in hand, prepare for the awe-inspiring moment when the iconic Mount Otemanu graces your view.

Once Bora Bora captivates your gaze, it's a memory that stays etched in your heart forever. Therefore, ensure your second day in Bora Bora is brimming with unforgettable moments that will linger with you for years to come.

Whether you choose to explore at your own pace or join us on one of our meticulously crafted optional Shore Excursions, seize the opportunity to create memories that will last a lifetime. Overnight at sea to Taha'a.



# TAHITI & ISLES OF FRENCH POLYNESIA

## SOCIETY ISLANDS 11-NIGHTA CRUISE ADVENTURE

### ON THE M/S PANORAMA II | 2026-2027



#### DAY 7 – TAHA'A

Taha'a fondly referred to as Vanilla Island, boasts an exquisite natural landscape. Its verdant valleys are adorned with lush banana, watermelon, and coconut plantations. Resembling a flower in shape, the island serves as a sprawling sanctuary for the prized Tahitian vanilla orchid. Taha'a shares a continuous coral reef and crystal-clear lagoon, enhancing its allure as an idyllic retreat. As we lay at anchor in Taha'a, you will enjoy swimming, snorkeling and watersports from our swimming platform in her beautiful sapphire waters!

Today, guests can opt for a leisurely exploration or embark on our enticing Vanilla Plantation & Rhumerie optional Shore Excursion, promising a delightful journey into Taha'a's aromatic world. Overnight in Taha'a.



#### DAY 8 – RAIATEA

With its name translating to "faraway heaven," Raiatea once stood as the paramount cultural and religious hub of the Society Islands. Today, Raiatea is believed to be a sacred resting place for the spirits of these ancestors, drawing pilgrims seeking spiritual connection.

Embark on our enriching Shore Excursion to the Faaroa River with a Motu Beach Break (optional), where you'll journey aboard a traditional Polynesian outrigger canoe.

Arriving at a serene motu, or islet, immerse yourself in the warm embrace of the sea and bask in the rejuvenating sun, a perfect interlude to your Raiatea exploration. Overnight in Raiatea.

#### DAY 9 – RAIATEA

Immerse yourself in the captivating tales and ancient legends, beckoning you to uncover its mysteries. Whether you yearn to traverse its verdant jungles or plunge into its sapphire-blue waters, Raiatea promises an enriching journey.

Savor the freedom to craft your day at your leisure, or opt to join one of our tailored optional Shore Excursions, curated to offer a deeper immersion into the island's unique ambiance, allowing you to embrace the essence of Mana. After dinner, set sail for Moorea.



#### DAY 10 – MOOREA

Today, our voyage brings us back to Moorea. It's no wonder that Moorea continues to captivate; it's a true marvel of nature. Today grants you the freedom to explore.



# TAHITI & ISLES OF FRENCH POLYNESIA SOCIETY ISLANDS 11-NIGHTS CRUISE ADVENTURE ON THE M/S PANORAMA II | 2026-2027

## DAY11 – PAPEETE PORT, TAHITI

Today you have the opportunity to discover the capital of Tahiti. Begin your day with the ½ day included excursion to the West Coast, visiting the Venus Point, the Faarumai Waterfalls (20 min hike, very easy) and the Arahoho blow hole. The East coast is considered as the "wild side" of Tahiti where you can only see black sand beach without any lagoon. Return to the ship for lunch and then take some free time to wander through the downtown municipal market, Le Marché, or explore LA Centre Vaima. For an authentic local experience, visit Vai'ete Square after sunset. Dinner on board.

## DAY12 – PAPEETE PORT, TAHITI

The morning sun graces Papeete Port. Breakfast on board , before disembarkation at 09:00AM  
Our dedicated Concierge stands ready to assist with any final arrangements, ensuring your journey concludes seamlessly.



*Variety Cruises' itineraries are contingent upon weather and sea conditions as well as local port authorities. In cases where wind speeds reach 6/7 Beaufort or high swells occur, itinerary changes may be necessary. It is upon Captain's discretion to alter the itinerary or skip port calls due to adverse weather or sea conditions to ensure the safety and comfort of passengers and crew. Such changes do not entitle passengers to any kind of refunds. Variety Cruises guarantees that passengers will be disembarked at the advertised port of disembarkation on time for their flights.*



TAHITI & ISLES OF FRENCH POLYNESIA  
SOCIETY ISLANDS 11-NIGHTS CRUISE ADVENTURE  
ON THE M/S PANORAMA II  
SAILING DATES 2026-2027

## 2026

From Papeete to Papeete	<b>Jan</b>	19
	<b>Mar</b>	02
	<b>Apr</b>	06
	<b>Jul</b>	13
	<b>Aug</b>	10
	<b>Sep</b>	14

## 2027

From Papeete to Papeete	Value Season	High Season
	<b>Jan</b> 04	<b>Feb</b> 01
<b>May</b> 03, 31	<b>Mar</b> 08	
<b>Jun</b> 21	<b>Apr</b> 05	
<b>Jul</b> 19	<b>Oct</b> 11	
<b>Aug</b> 23	<b>Nov</b> 08	
<b>Sep</b> 13	<b>Dec</b> 27	



YOUR BOAT

# M/S PANORAMA II

## Motor Sailer

### GENERAL INFORMATION

**Length:** 50m

**Launched:** 2004 | **Renovated:** 2015

**Cabins:** 25

**Capacity:** 49 passengers

**Crew:** 16-18

The two-mast M/S Panorama II, launched in 2004, carries just 49 passengers and offers high standard accommodation, comfort and safety. This state of the art Motorsailer has performed several Atlantic Ocean crossings, from the Seychelles to Monte Carlo and from the Black Sea to Tunis. The public areas include a main bar and lounge, which was renovated in 2015 to feature wood flooring and new furniture with soft fabrics in warm coral tones. Service on board is provided by your Captain, the Cruise Coordinator and your experienced Marine and Hotel crew members.



updated Apr 10, 2024

#16000



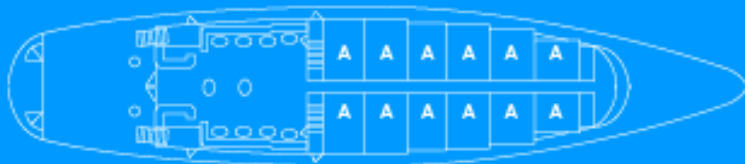
YOUR BOAT  
**M/S PANORAMA II**

Motor Sailer

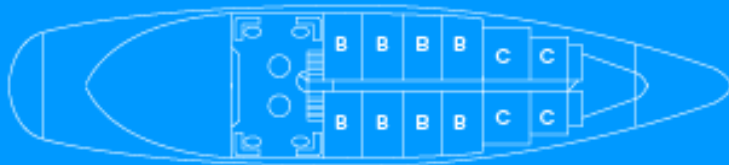
**360°**  
SUN DECK



**RIVIERA**  
MAIN DECK



**OCEANS**  
LOWER DECK



The Panorama II is a 164 ft Motor Sailer which complies with the latest SOLAS regulations for International Voyages. Her state of the art twin masts with 600 m<sup>3</sup> of sails allow safe and comfortable sailing.



YOUR BOAT

# M/S PANORAMA II

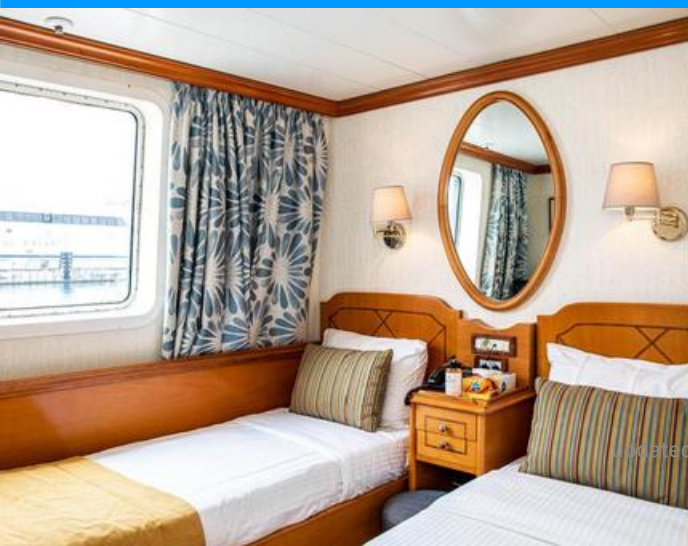
## Motor Sailer

### CABIN SPECIFICATIONS

The M/S Panorama II outside cabins are located at the Upper, Main and Lower decks and are handsomely designed, finished with lustrous wood trims and warm fabrics. They all have marble-appointed en suite bathrooms with showers and are equipped with windows (Upper & Main deck cabins) and portholes (Lower deck cabins). All cabins have individually controlled A/C and fitted with Flat screen TV, telephone (for internal use), hairdryers, mini-fridge, central music, public address system and safe deposit boxes. 4 Main Deck cabins are convertible into 2 suites. 4 Lower deck cabins can be offered as Triple cabins.

### LIFE ON BOARD

During the day life on board centers around the indoor Lounge area and the indoor dining room, as well as the open and inviting deck areas, natural gathering places, perfect for enjoying your meals al fresco, settling into a chair with a good book, or gather with your fellow passengers and enjoy the views of the places you visit. The swim platform on PANORAMA II's stern enables you to swim off the yacht when weather and anchorage conditions permit.



Updated Apr 10, 2024



YOUR BOAT

# M/S PANORAMA II

## Motor Sailer

### Main deck lounge

The main lounge with comfortable sofas has a full-service bar and a plasma TV screen and is the hub of social activities such as the daily briefings on the destinations visited and other gatherings. This area is ideal for enjoying the company of your fellow travelers or simply for reading a good book from the library. The area was beautifully renovated in 2015 to feature wood flooring and new furniture and comfortable sofas with soft fabrics in warm coral tones.

### Indoor and Outdoor dining room

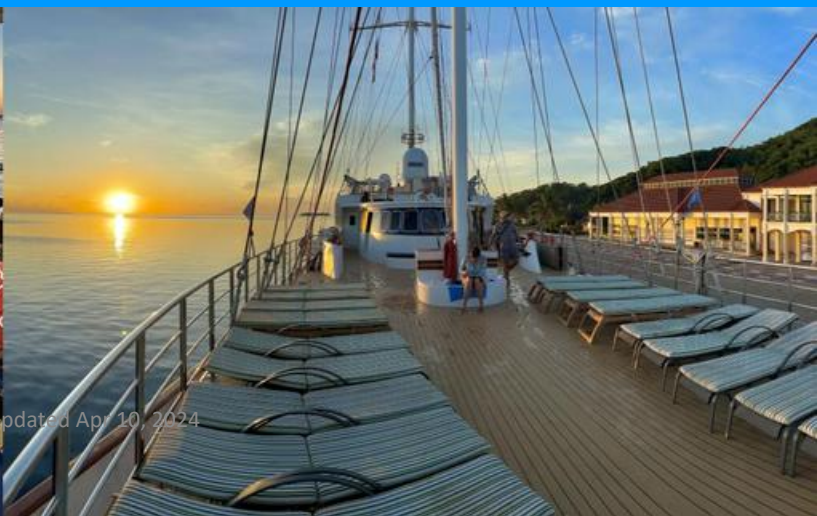
Located on the Lower deck, the indoor dining room seat all passengers in a single, unassigned seating and offer generous buffet space. The aft area at the Upper Deck provides generous semi-covered area where guests can enjoy their meals al fresco in a single, unassigned seating, with wonderful views, weather permitting. Food is served at the table or displayed on the state of the art hot & cold buffets, also including an “a la minute cooking” section. The menu is international, with a focus on local specialties.

### Sun deck

The bow area at the Upper deck provides generous space and comfortable sun loungers are available to sunbathe in total comfort.

360Tour

**[Pan Orama II | Variety Cruises \(thevivistia.com\)](http://thevivistia.com)**



updated Apr 10, 2024

# WHAT'S INCLUDED

## Included

- Accommodation in double or twin cabins with private SH/WC & air conditioning.
- Full-board: Buffet breakfast and two meals daily, including a Welcome Cocktail, a local Theme Evening, fun BBQ (weather permitting) and Captain's Dinner.
- Regular (filter) coffee, tea and drinking water free all day.
- Use of fishing and snorkelling equipment (subject to availability).
- English-Speaking Chief Experience Officer.

## Not included

- Beverages (except those mentioned above).
- Shore excursions on the islands or other land arrangements unless specifically included.
- Crew tips.
- Passenger personal expenses.
- Wi-Fi (available at charge).

# 11-NIGHTS TAHITI & ISLANDS OF FRENCH POLYNESIA

Travel for  
Travellers  
BY GLP WORLDWIDE

SAVE  
\$1,270

From: ~~\$6,360~~ per person

**CAD \$5,090 + PORT TAXES**

**Up to 20% OFF + 2 FREE Shore Excursions !**

**Additional Incentives Available  
for Webinar Attendees**

**LIVE WEBINAR**

APR 29, 2026 | 1:00 - 2:00 PM EDT

**REGISTER NOW**



[https://info.glpworldwide.com/cc20260401-variety\\_tahiti](https://info.glpworldwide.com/cc20260401-variety_tahiti)

## CONTACT



1.866.760.1987



info@glpworldwide.com



www.travelfortravellers.com



26-1211 Denison St, Markham,  
ON L3R4B3, Canada