

Standard 16 Way (8+8) Fused Distribution Unit For The Telecoms Industry 2023

Edition V11 - Jan 2024

Part number; 8+8FDU

Design & Manufacturers of:

| AC Switchgear | DC Switchgear | Bespoke Control Panels | AC & DC
PDC's & PDU's |
| Copper Junction Boxes | Marshalling Panels | Transition Boxes | Earth
Bars |

Contents

Page	
2	Introduction
3	Technical Information
4	Schematic Diagram
5	General Arrangement Drawings
6	Possible DC Input configurations

All ratings based on an operating temperature of 40°C ambient temperature, with 50°C temperature rise



Head Office:
34 Forest Road
Hinckley
Leicestershire
LE10 1HB
Tel: 01455 234996
Email:
info@amjelectricaldesigns.co.uk
Web:
www.amjelectricaldesigns.co.uk

Workshop:
Units 53 & 73 Sparkenhoe Business
Centre
Southfield Road
Hinckley
Leicestershire
LE10 1UB
Tel: 01455 616686
Email:
info@amjelectricaldesigns.co.uk

STANDARD 16 WAY (8+8) FUSED DISTRIBUTION UNIT

Fused distribution unit for telecoms 19" racks.
Rated -48V DC at 41A per A and B feed
8 ways for A feeds (max10A fuses)
8 ways for B feeds (max10A fuses)
Can be loop fed to create a single 16 way board
LED to show fuse is fitted and healthy
Accepts 6.3mm x 32mm fuses, 6A fitted
5mm x 20mm fuses can be fitted with different fuse cap
different cap)



Technical Information

TECHNICAL DATA	
Supply Voltage	MINUS 48V DC
Supply Current	40A
Supply Terminals	A FEED IN = 32A POS AND NEG UPTO 6mm ² A FEED OUT = 32A POS AND NEG UPTO 6mm ² B FEED IN = 32A POS AND NEG UPTO 6mm ² B FEED OUT = 32A POS AND NEG UPTO 6mm ²
Earthing arrangement	ISOLATED EARTH SUITABLE FOR UPTO 16mm ²
Operating temperature	Minus 30 DegC to Plus 60 DegC
Mechanical Protection	IK08
Construction	Lid and base 2mm Polished Aluminium Front and rear 2mm Aluminium with silver pvc label Sides 66 x 22 Aluminium profile
Min degree of protection	IPxxB AND IP4x
Compliance	EN60670 and EN60950
Intended use	19" Rack mounting 1 1/2 U
Configurable	All A, All B, separate A and B
Max output	10A per way
Output Sockets	Molex 19-09-2038 with male pins 02092118 Suitable for Molex cable assembly 11254201
Output Plugs	MOLEX 19-09-1039 (no pins fitted) for IP only
Weight	2.75KG

Head Office:

34 Forest Road

Hinckley

Leicestershire

LE10 1HB

Tel: 01455 234996

Email:

info@amjelectricaldesigns.co.uk

Web:

www.amjelectricaldesigns.co.uk

Workshop:

Units 53 & 73 Sparkenhoe Business
Centre

Southfield Road

Hinckley

Leicestershire

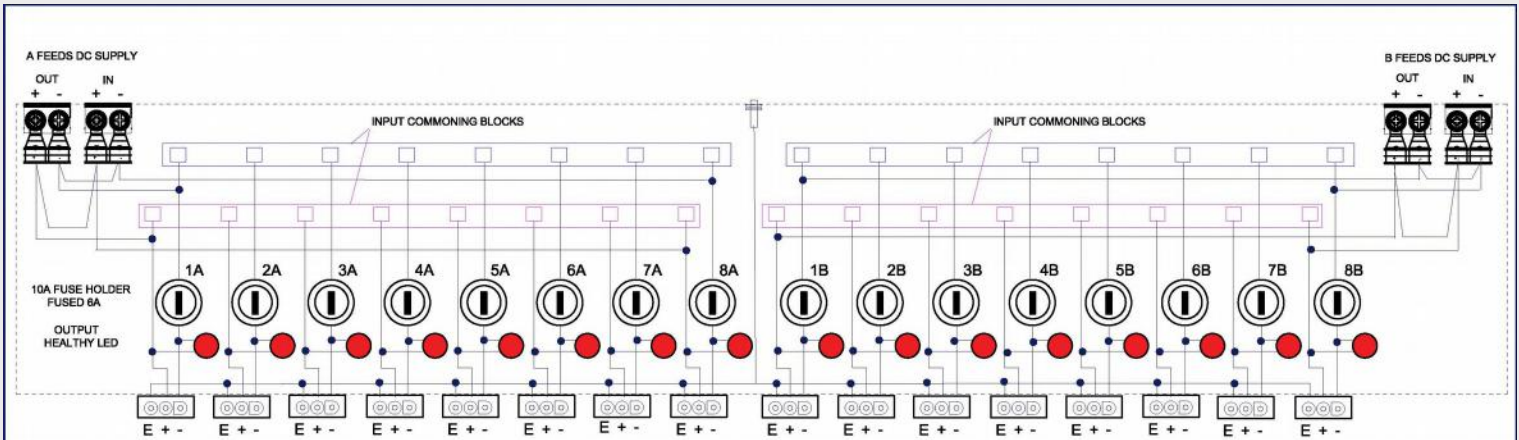
LE10 1UB

Tel: 01455 616686

Email:

info@amjelectricaldesigns.co.uk

SCHEMATIC DIAGRAM



LABEL ATTACHED TO RACK SET BACK BRACKET AT FRONT LEFT

LABEL ATTACHED TO RACK SET BACK BRACKET AT FRONT RIGHT

A M JOYNES
ELECTRICAL DESIGNS

'A' FEEDS
FUSES 1A - 8A MAX 10A FUSE
FUSE TYPE 6.3mm X 32mm HBC
SYSTEM VOLTAGE -48V DC

SEE FUSE CHART
FOR CIRCUIT IDENTIFICATION
www.amjelectricaldesigns.co.uk

DITTO 'B' FEEDS

Drawing Notes:

- 1 - Fuse rating on each outgoing socket = 10A max 54V DC (fused at 6A)
- 2 - Fascia sockets rated 11A max 48V DC Ip4x finger proof and lockable
- 3 - Each socket complete with 48V high brightness LEDs "fuse healthy"
- 4 - Front and rear panel anodised aluminium, sides extruded aluminium
- 7 - Top and bottom polished aluminium, removable via screws
- 8 - Rack set back brackets finished gloss black

A			
Rev:	Description:	By:	Date:
Amendments			
Drawing Number:	Drawn:	Date:	Rev:
J6174	AMJ	31-03-23	A
Quote Number:	Checked:	Date:	Sheet:
Q23220	JMJ	31-01-23	2 of 3

A M JOYNES
ELECTRICAL DESIGNS

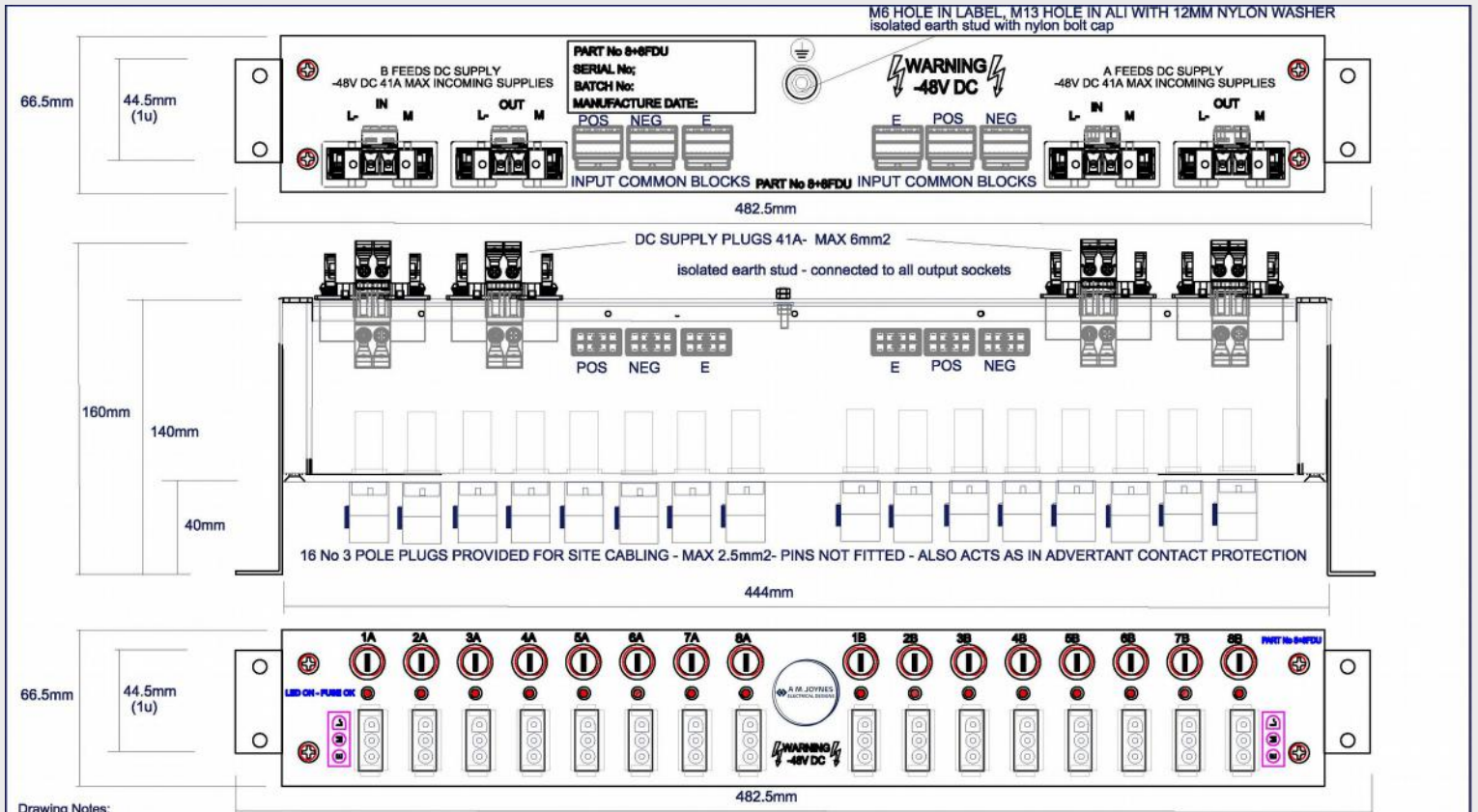
A M Joynes Electrical Designs
34 Forest Road, Hinckley, Leics, LE10 1HB
t: 01455 234996 / 01455 616686
e: info@amjelectricaldesigns.co.uk
w: www.amjelectricaldesigns.co.uk

Customer: **ADVILLE LTD**

Title: **16 WAY A PLUS B - 48V DC PDU
RACK MOUNTING
SCHEMATIC DIAGRAM**



GENERAL ARRANGEMENT DRAWINGS



Drawing Notes:

- 1 - Fuse rating on each outgoing socket = 10A max 54V DC (fused at 6A)
- 2 - Fascia sockets rated 11A max 48V DC ip4x finger proof and lockable
- 3 - Each socket complete with 48V high brightness LEDs "fuse healthy"
- 4 - Front and rear panel anodised aluminium, sides extruded aluminium
- 7 - Top and bottom polished aluminium, removable via screws
- 8 - Rack set back brackets finished gloss black
- 9 - 2No Tyrap saddles fitted to rear for site cables



A M Joynes Electrical Designs
 34 Forest Road, Hinckley, Leics, LE10 1HB
 t: 01455 234996 / 01455 616686
 e: info@amjelectricaldesigns.co.uk
 w: www.amjelectricaldesigns.co.uk

Customer:

ADVILLE LTD

Title:

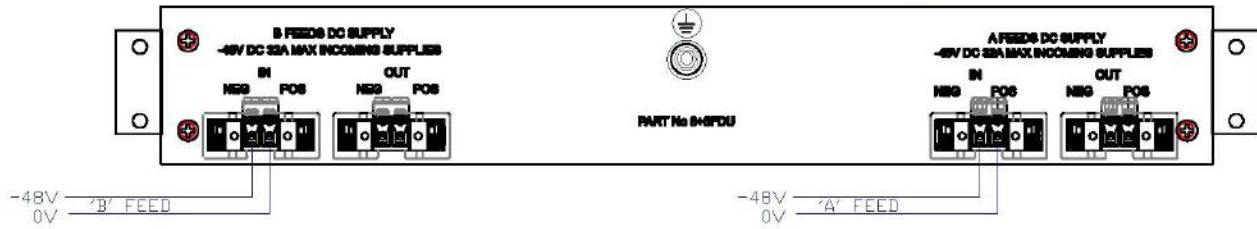
16 WAY A PLUS B - 48V DC PDU
 RACK MOUNTING

C			
Rev:	Description:	By:	Date:
Amendments			
Drawing Number:	Drawn:	Date:	Rev:
J6174	AMJ	31-01-23	A
Quote Number:	Checked:	Date:	Sheet:
Q23220	JMJ	31-01-23	1 of 2

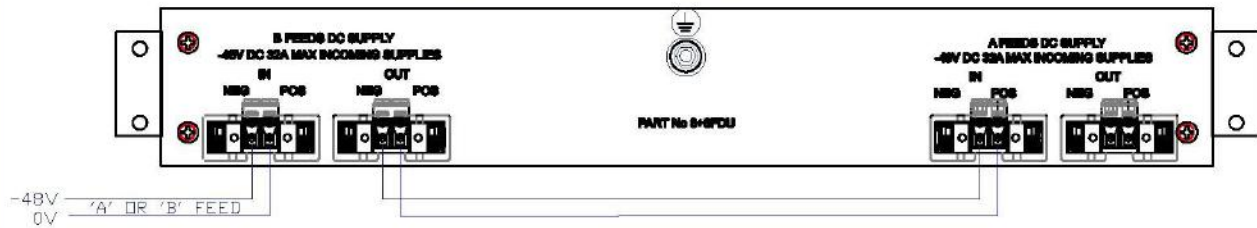


POSSIBLE DC INPUT CONFIGURATIONS

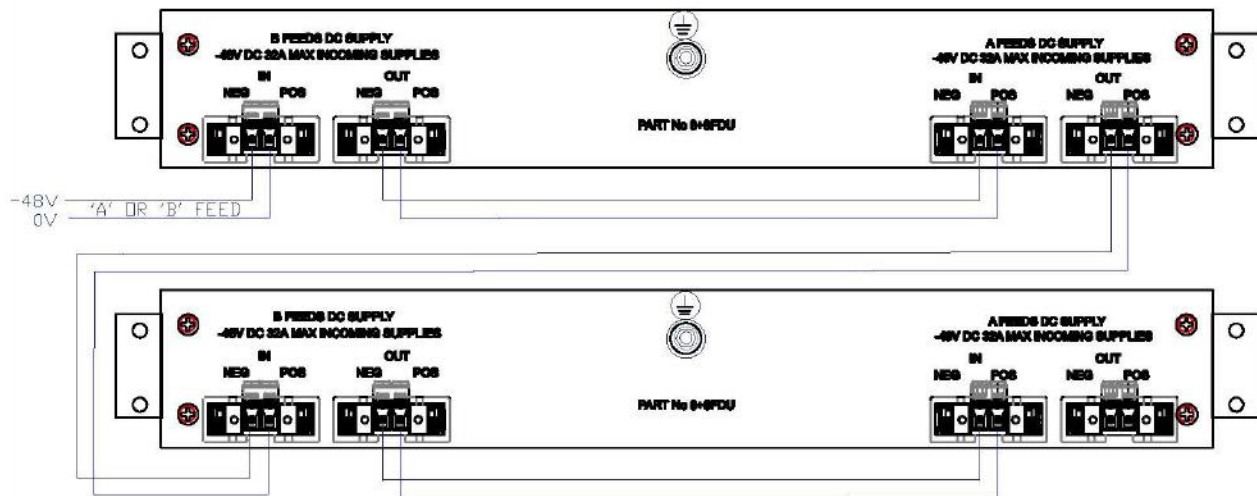
SINGLE 8 + 8 FDU WITH SEPERATE 'A' AND 'B' FEEDS



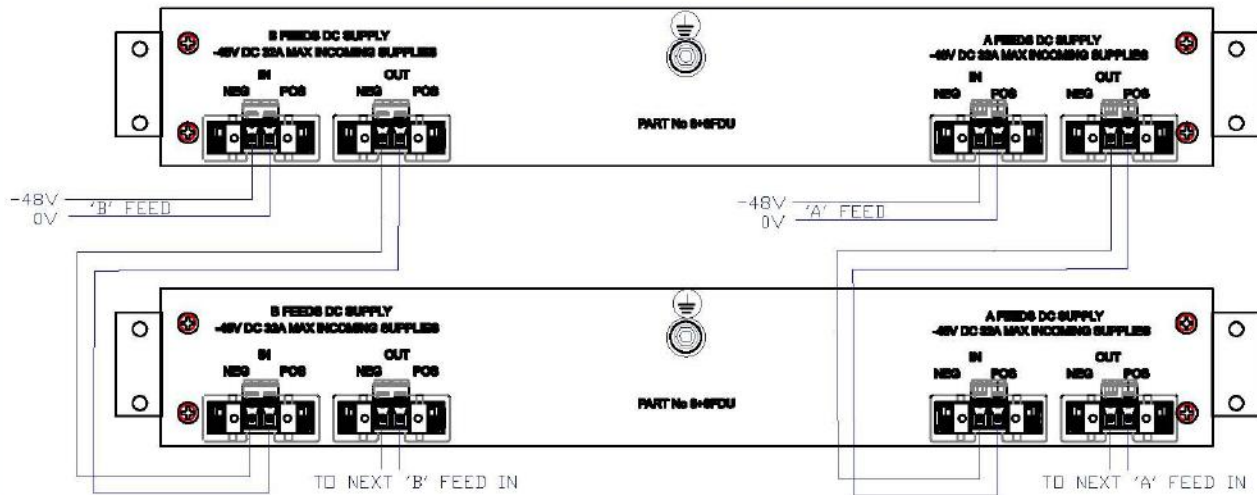
SINGLE 8 + 8 FDU WITH SINGLE 'A' OR 'B' FEED

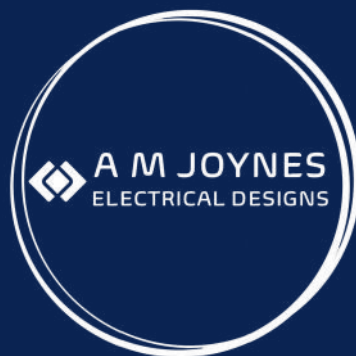


MULTIPLE 8 + 8 FDU WITH SINGLE 'A' OR 'B' FEED



MULTIPLE 8 + 8 FDU WITH BOTH 'A' AND 'B' FEEDS





Head Office:

34 Forest Road

Hinckley

Leicestershire

LE10 1HB

Tel: 01455 234996

Email:

info@amjelectricaldesigns.co.uk

Web:

www.amjelectricaldesigns.co.uk

Workshop:

Units 53 & 73 Sparkenhoe

Business Centre

Southfield Road

Hinckley

Leicestershire

LE10 1UB

Tel: 01455 616686

Email:

info@amjelectricaldesigns.co.uk