

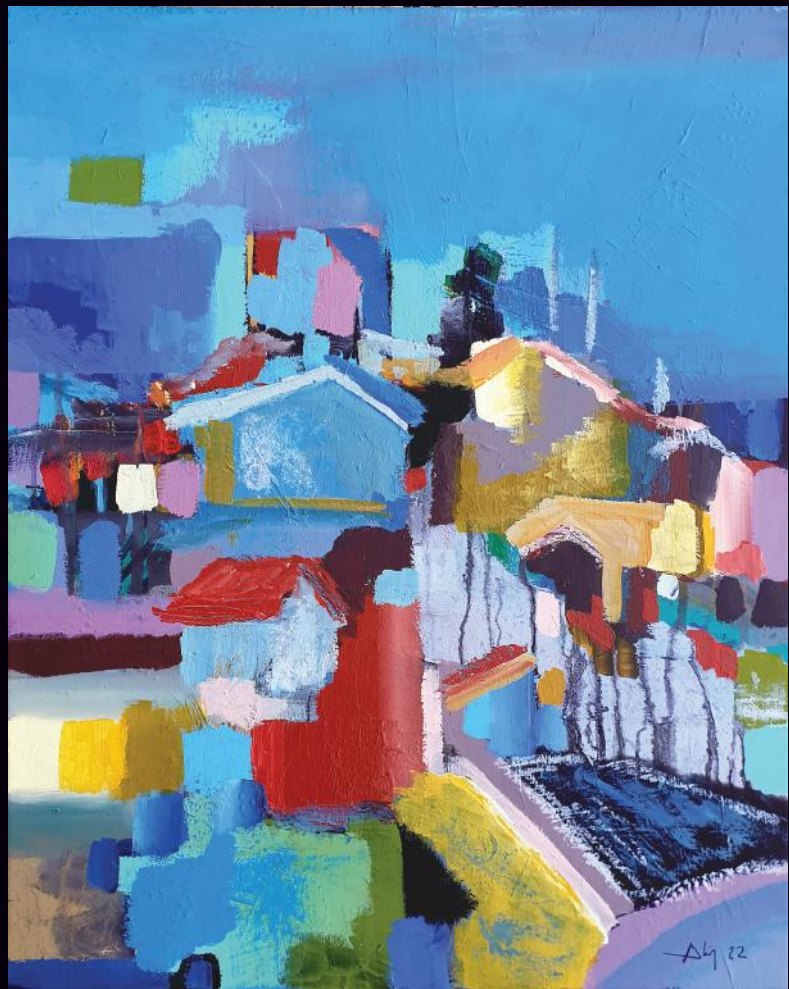
*D'un monde à l'autre*





D'un monde

à l'autre



*D'où ?*



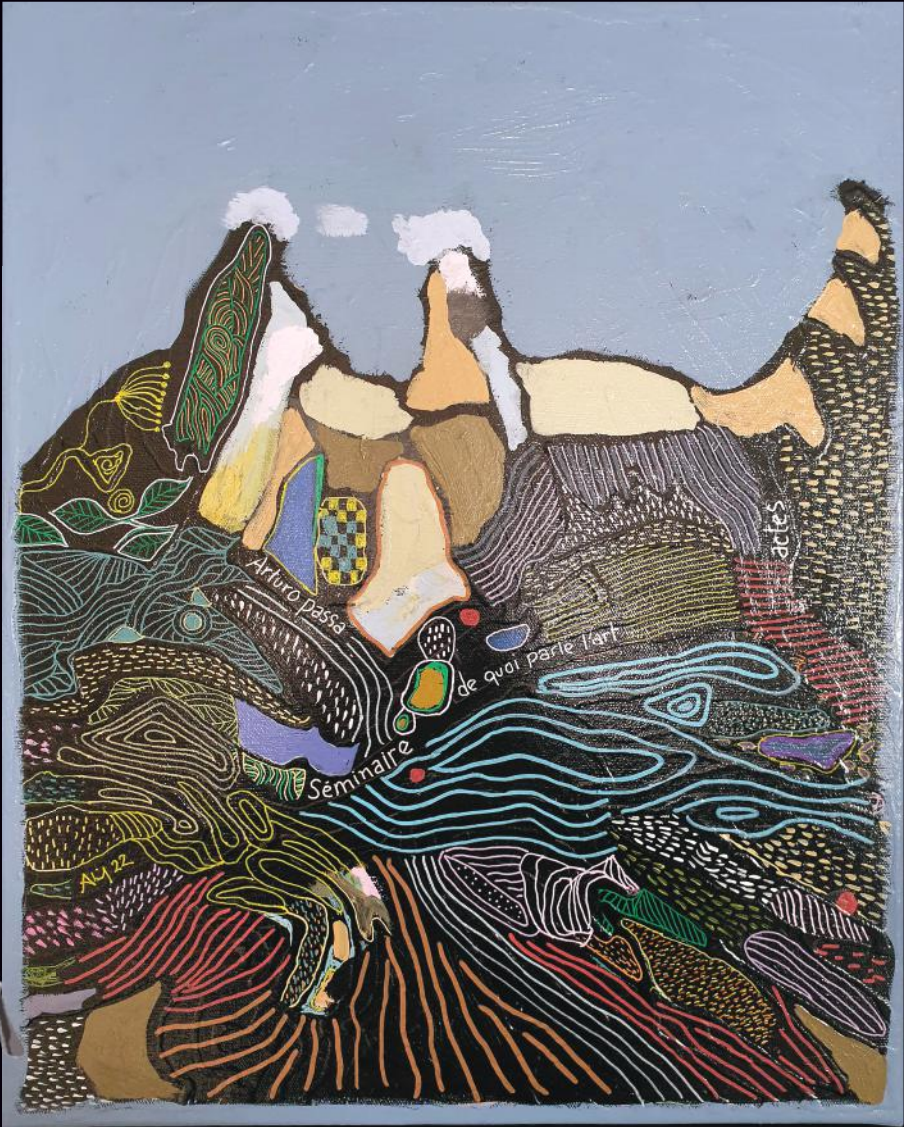
A series of five horizontal white lines for writing, enclosed in a dashed black border.



A large rectangular area with a dashed black border, containing horizontal lines for writing.

*Jusqu'où ?*

A large white rectangular area with horizontal lines, enclosed in a dashed black border, intended for writing.



Chez qui ?



*Depuis quand ?*

A large rectangular area with a dashed black border, containing horizontal lines for writing.

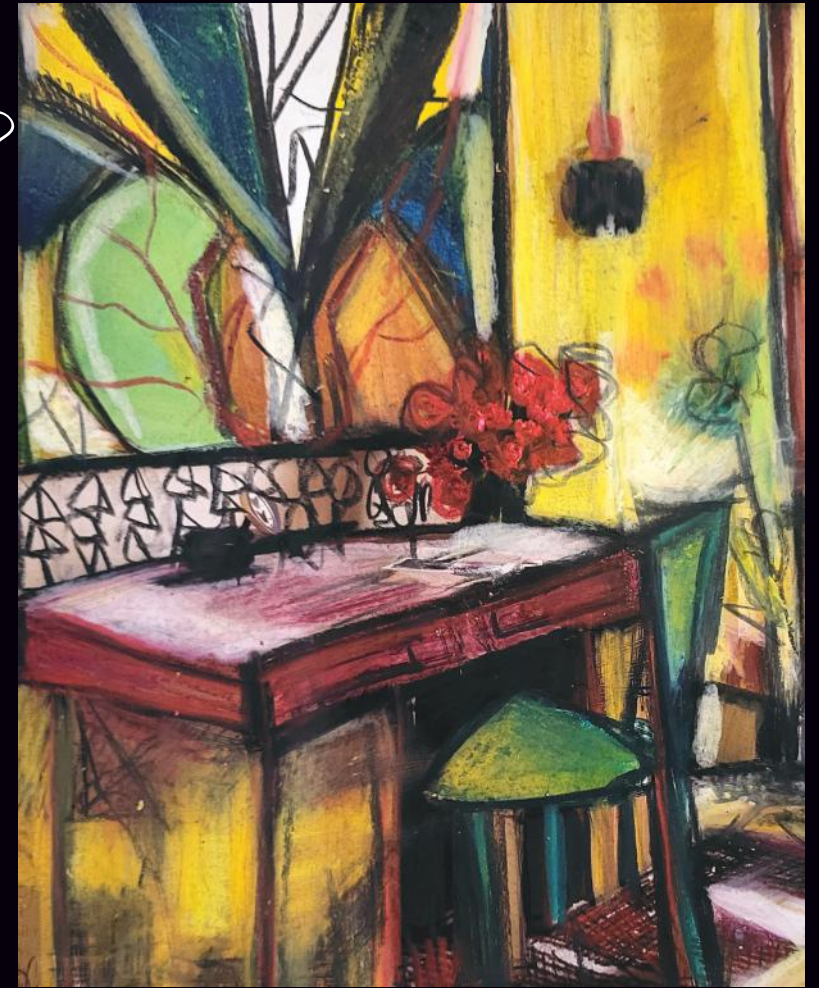
A large rectangular area with a dashed white border, containing horizontal lines for writing.



*De quel pays ?*



En quelle année ?



---

---

---

---

---

---

---

---



A large rectangular area with a dashed white border, containing horizontal lines for writing.

*Avec qui ?*



*Dans quel jardin?*

Lined writing area for notes.



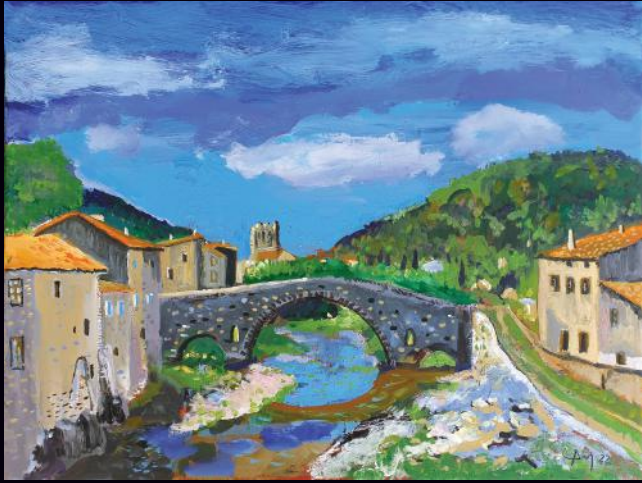
*Quel au revoir?*



*A quel point ?*

A large rectangular area with a dashed white border, containing horizontal lines for writing.

*D'où vers où?*



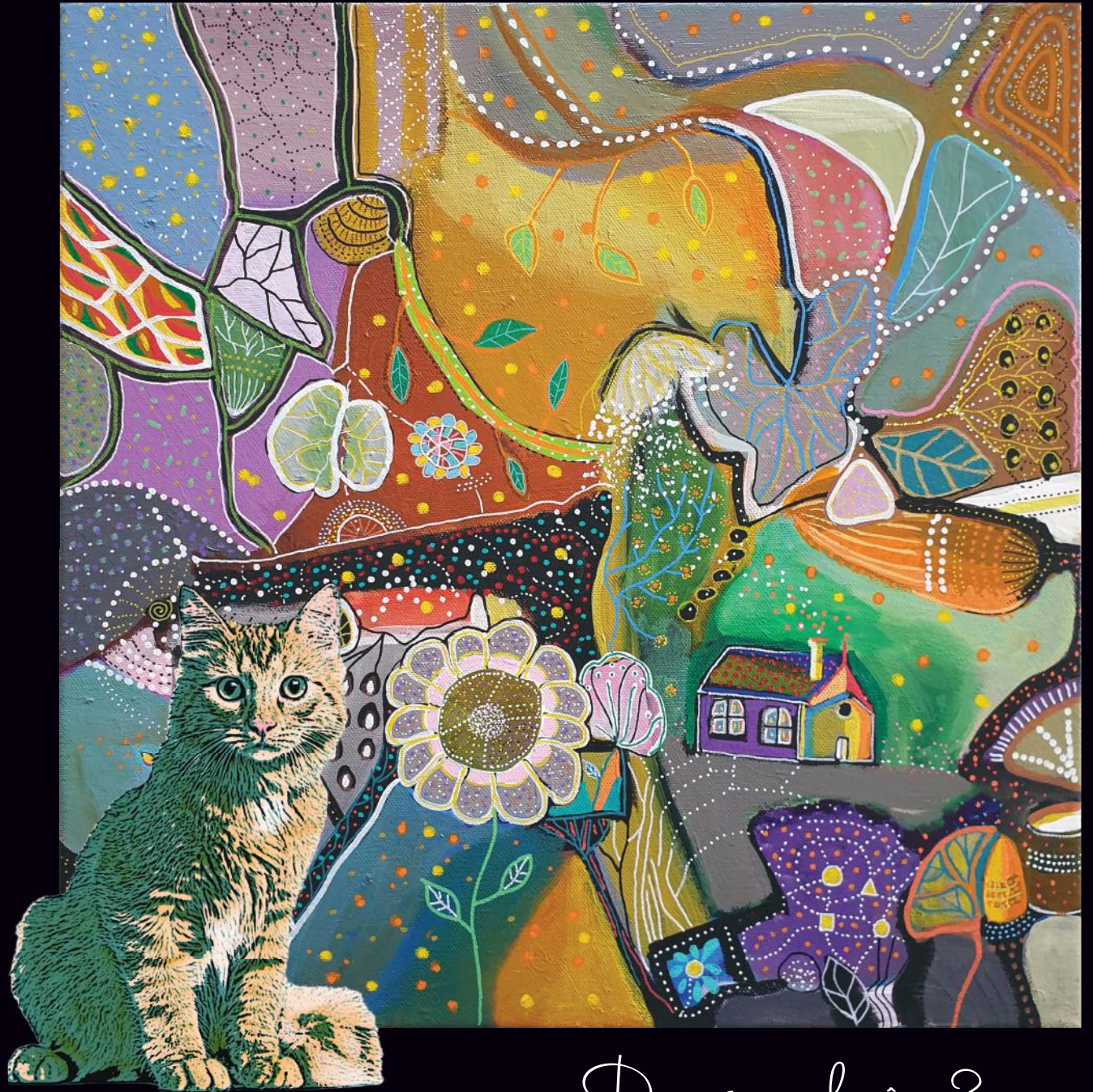
A large white rectangular area with a dashed black border, containing several horizontal lines for writing.



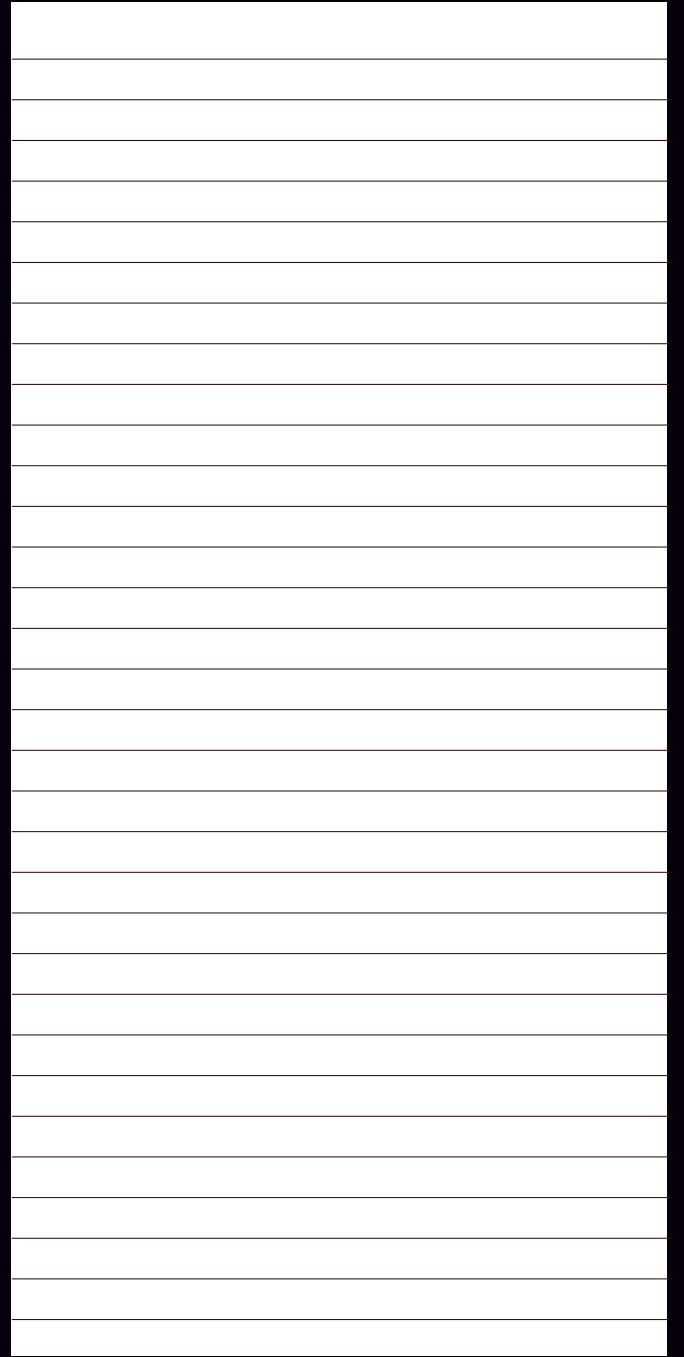
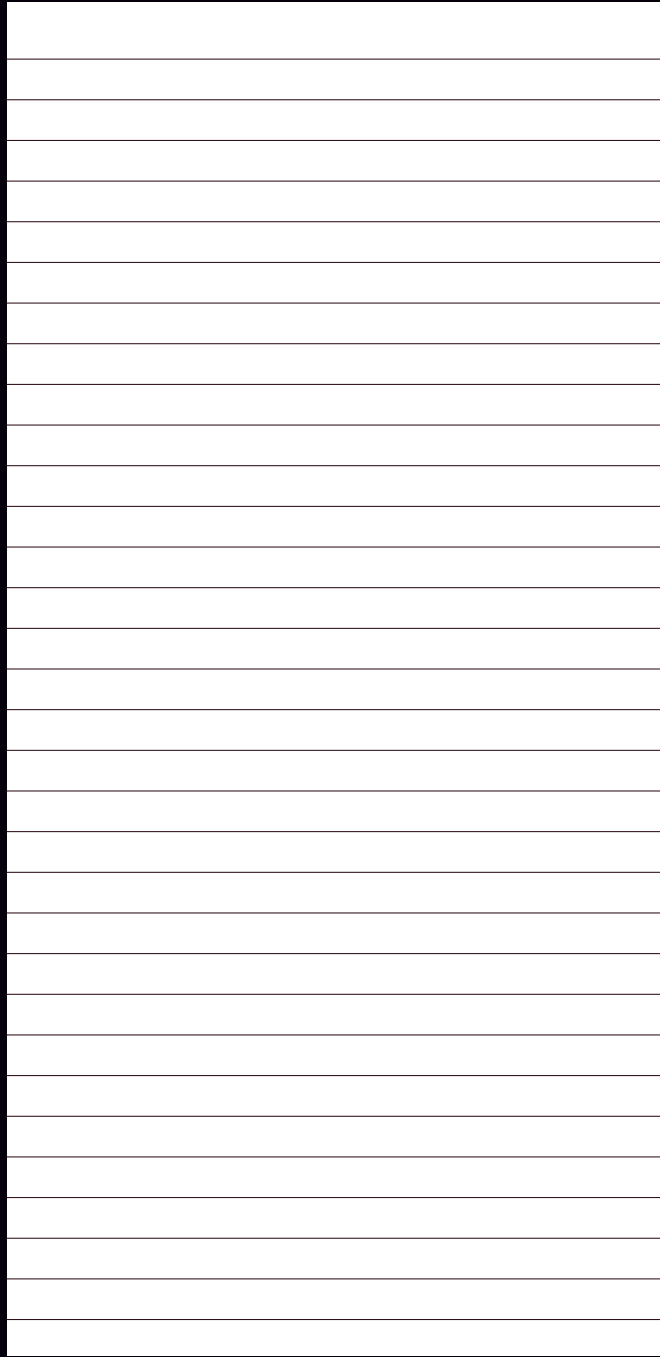
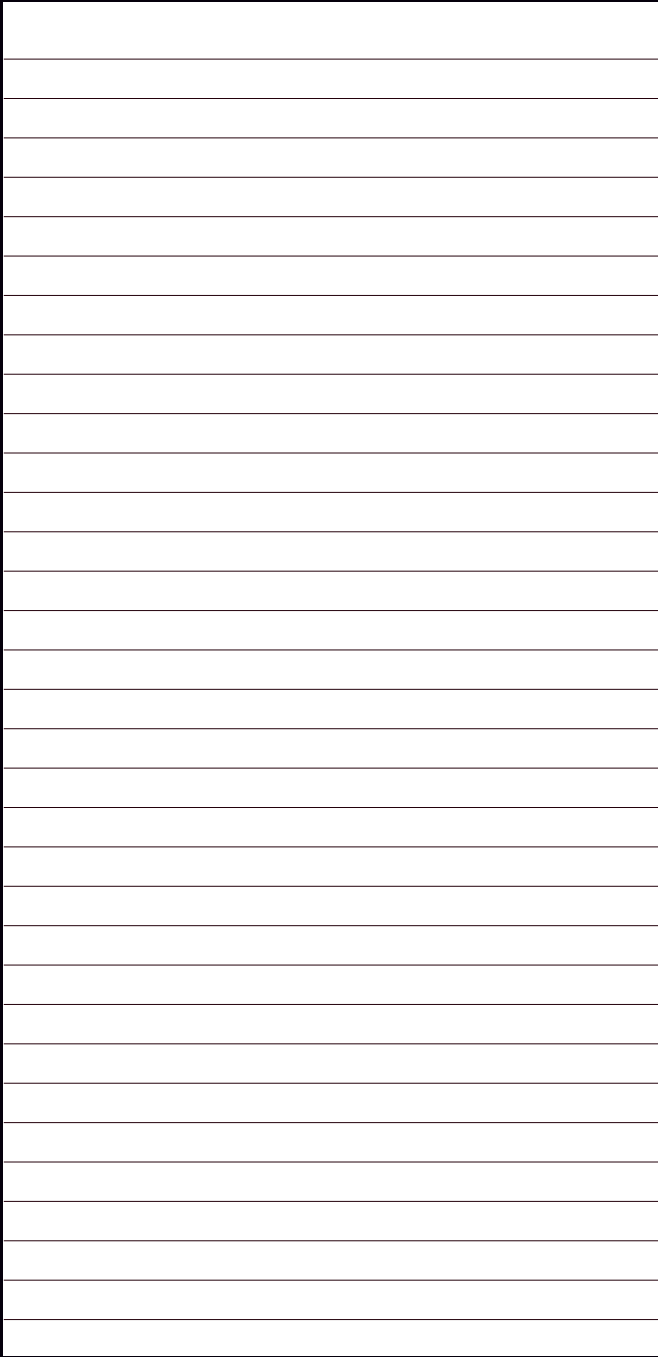
Être ?

A large rectangular area with a dashed border, containing horizontal lines for writing.

Lined writing area for a response.



*Dans quel rêve?*





*Danser ?*



A rectangular area with a dashed border containing five horizontal white lines for writing.



A large rectangular area with a dashed border containing ten horizontal white lines for writing.

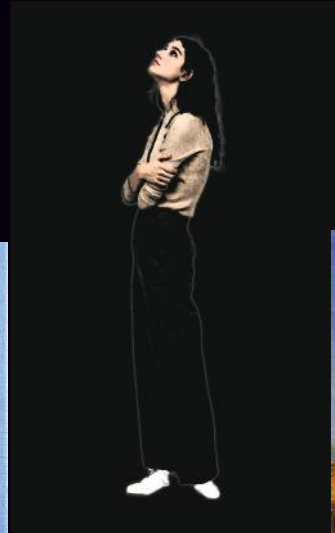




*Une énigme ?*

A large rectangular area with a dashed border, containing horizontal lines for writing. The lines are evenly spaced and cover most of the page's width and height.

Songer ?



A large white rectangular area with a dashed black border, containing several horizontal lines for writing.

Découvrir ?



A large white rectangular area with a dashed black border, containing several horizontal lines for writing.



*Ancrer ?*

A large rectangular area with a dashed black border, containing horizontal lines for writing.

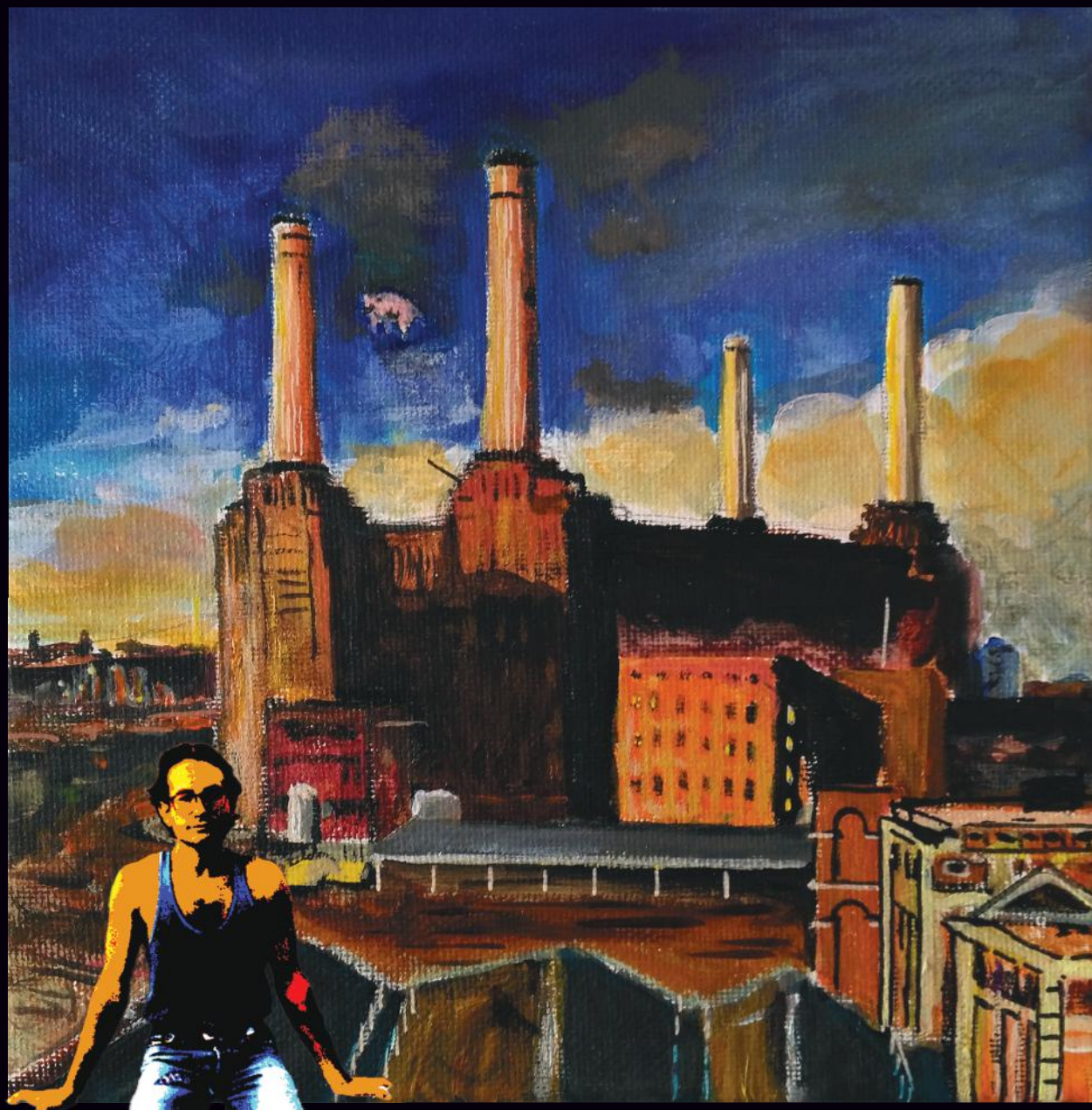


*S'exiler ?*



*Naviguer ?*

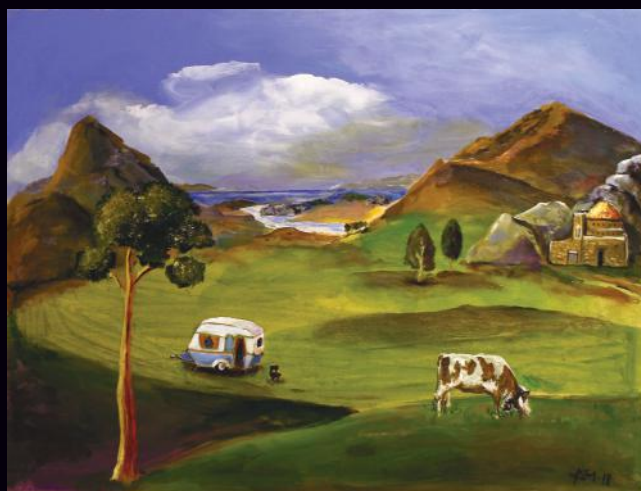
A large white rectangular area with a dashed black border, containing horizontal lines for writing.



Voyager ?



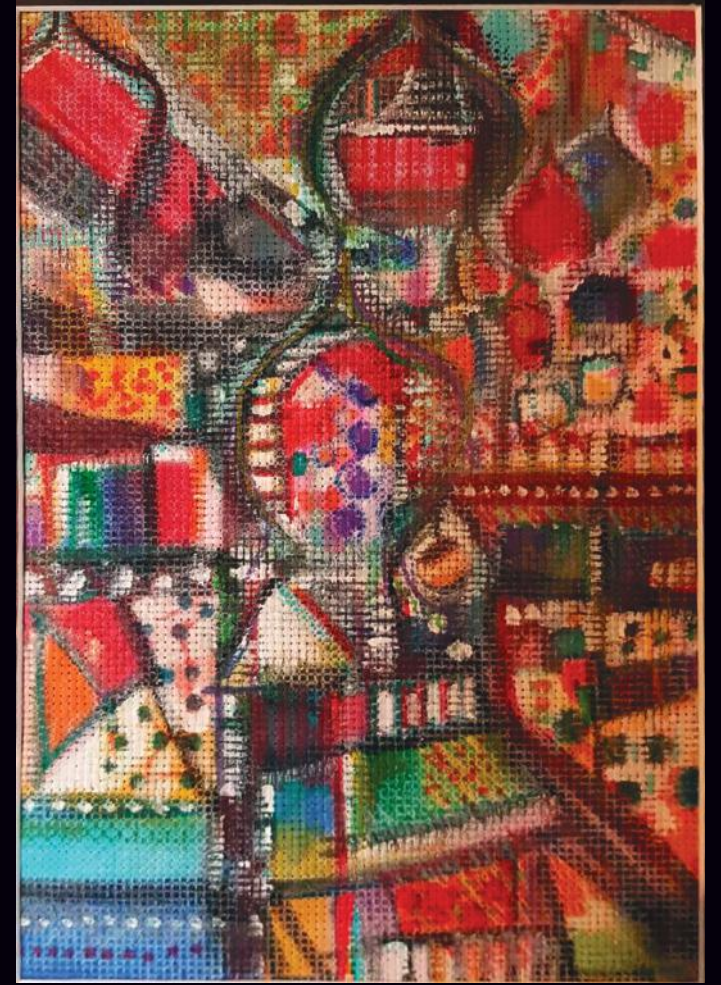
Vers la paix ?



A large white rectangular area with a dashed border, containing several horizontal lines for writing.



Qu ?



A large white rectangular area with a dashed black border, containing several horizontal lines for writing.

A large rectangular area with a dashed border, containing horizontal lines for writing. The lines are evenly spaced and cover the majority of the page's width and height.



L'esperluette Alizarine & - 2025

Impression Pixartprinting - Août 2025 - Conception graphique by Le Studio Ségry ©