



Dedham Parish Council

Public Consultation for redevelopment of Royal Square

Questionnaire

Introduction

Dedham Parish Council are reviewing plans to upgrade the Royal Square.

As custodians of the Square we have concerns about the loose gravel surface and the risk that it could migrate onto the road, causing safety issues.

Also the manoeuvrability of cars with the current parking layout perpendicular to the road is poor, particularly given the restrictions around the war memorial.

To assess the design options available we are considering plans prepared by a landscape architect to replace the loose gravel with a natural stone paving and / or bonded gravel, as well as turn the direction of parking so it's parallel to the road.

We are also considering an alternative scheme to remove the carpark altogether and replace it with a market square, including formal trees and seating.

We are interested in the views of all Dedham residents and businesses and would appreciate 1-2 minutes of your time to answer some short questions.

Proposal's

The outline proposals for the Square for consultation purposes are shown on the following three drawings, attached to this questionnaire:

Plan Drawing 1

Carpark redesign option 1 - bonded gravel with central paved area

Plan Drawing 2

Carpark redesign option 2 - whole area in natural paving

Plan Drawing 3

Non-parking sketch 3 - bonded gravel with sandstone flag central area and formal trees

Questions

1. Firstly, please review these three plans. Which of these do you prefer and why?

2. Bearing in mind the plans you've just seen for Royal Square, on a scale of 1 to 5, to what extent do you agree or disagree with the following, with 1 being strongly disagree and 5 being strongly agree.

2.1 The proposed plans will improve Royal Square?

OPTION	SCORE 1 - 5
Plan Drawing 1 - Carpark redesign option 1	
Plan Drawing 2 - Carpark redesign option 2	
Plan Drawing 3 - Non-parking option	

2.2 The proposed carpark redesign plans will make it easier to park at Royal Square?

OPTION	SCORE 1 - 5
Plan Drawings 1 and 2 - Carpark redesign	

3. Are there any elements of a specific design option which you would like to see incorporated in another design option?

Questions

4. What concerns do you have, if any, about the plans to upgrade Royal Square taking place?

5. What considerations would you most like the Council to take on board when they're reviewing plans?

6. We are interested in any further thoughts you might have on this topic.
Please share them below:

Thank you for your time, if you have any other questions or thoughts please get in touch.

Your Details

Name:
.....

Address:
.....
.....

Postcode:

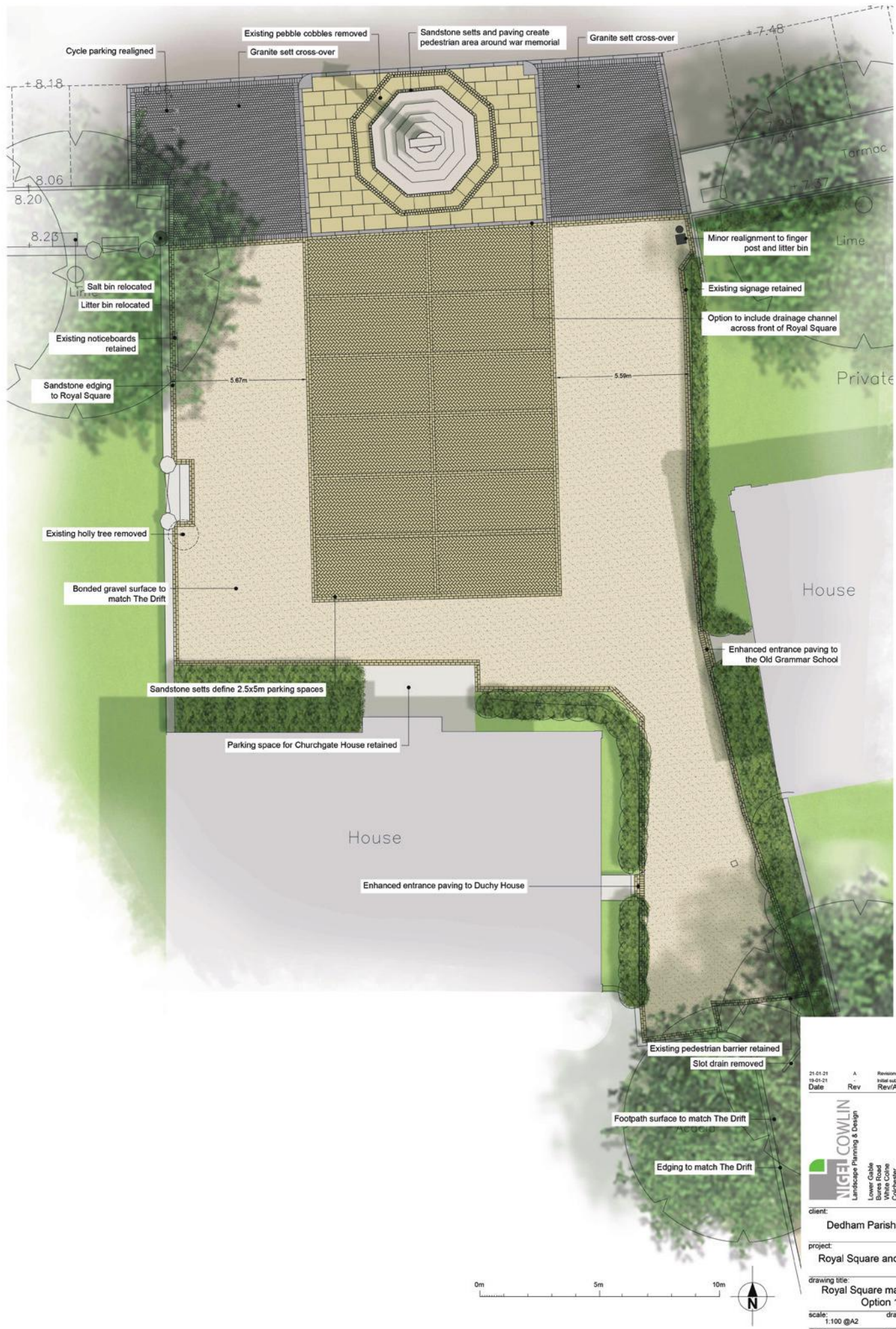
Date:

Please return to the clerk at
Dedham Parish Council by
31st December 23

Post to

Carol Harbach
The Gem
Nayland Road
Great Horkesley
Colchester
CO6 4HA

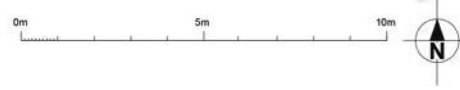
Or use collection box in
Dedham Church or Co-op

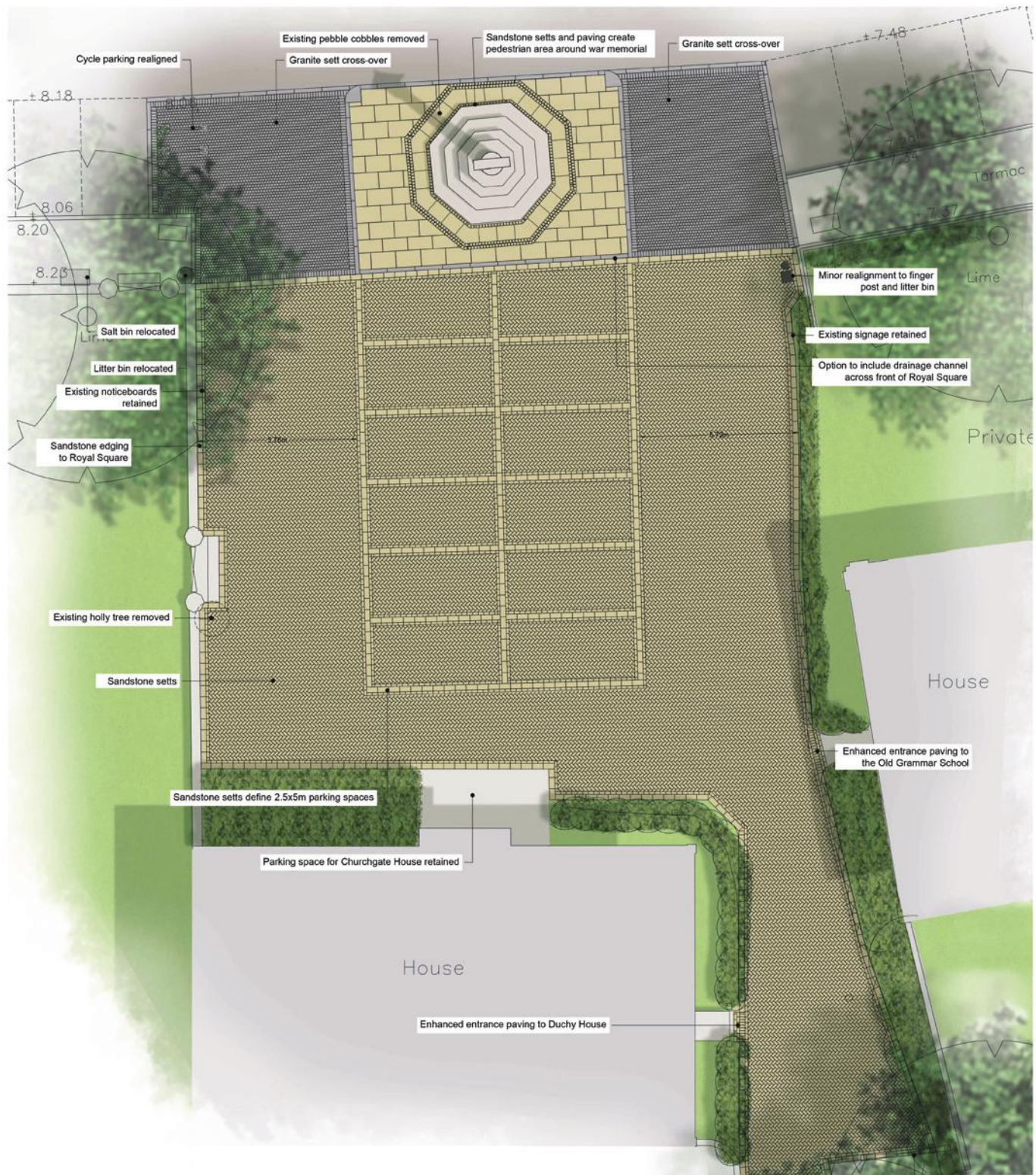


21-01-21	A	Revisions to letter A/C
19-01-21	-	Initial submission for comment AK/NC
Date	Rev	Rev/Author/Checked By

NIGEL COWLIN
 Landscape Planning & Design
 Lower Gable
 Bures Road
 Little Wymondley
 Colchester
 Essex
 CO9 2DF
 01787 220457
 office@nigelcowlin.co.uk
 www.nigelcowlin.co.uk

client: **Dedham Parish Council**
 project: **Royal Square and The Drift**
 drawing title: **Royal Square masterplan: Option 1**
 scale: 1:100 @A2 drawn by: AK
 date: 18-01-2021 chkd by: NC
 drawing number: NC_19.583-S-133 revision: A

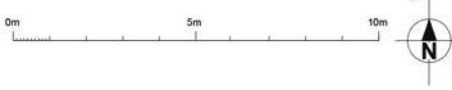


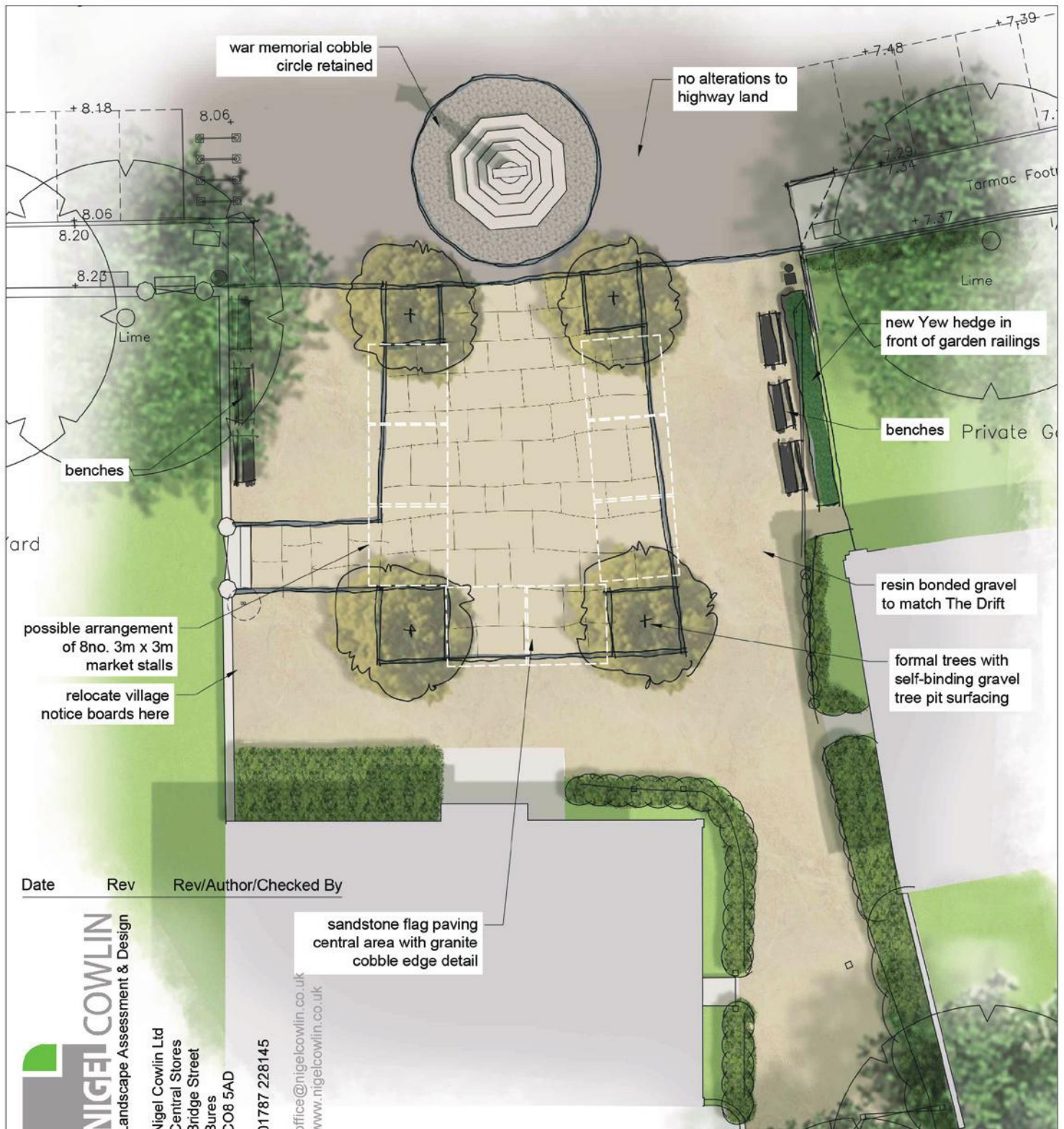


Date	Rev	Initial submission for comment ACC	Rev/Author/Checked By
21-01-21	-		

NIGEL COWLIN
 Landscape Planning & Design
 Lower Gable
 Bures Road
 Little Wymondley
 Colchester
 Essex
 CO9 2DF
 01787 220457
 office@nigelcowlin.co.uk
 www.nigelcowlin.co.uk

client: **Dedham Parish Council**
 project: **Royal Square and The Drift**
 drawing title: **Royal Square masterplan: Option 2**
 scale: 1:100 @A2 drawn by: AK
 date: 18-01-2021 chkd by: NC
 drawing number: NC_19.583-S-134 revision: -





Date	Rev	Rev/Author/Checked By

NIGEL COWLIN
 Landscape Assessment & Design
 Nigel Cowlin Ltd
 Central Stores
 Bridge Street
 Bures
 CO8 5AD
 01787 228145
 office@nigelcowlin.co.uk
 www.nigelcowlin.co.uk

client:

Dedham Parish Council

project:

Royal Square

drawing title:

Non-parking option sketch design 3

scale: 1:200 @ A4 drawn by: NC

date: 03 March 2022 chkd by: AK

drawing number: NC19.583-143 revision: -

