



ISSUE 24

WINTER 2012

£1

*Seasonal Greetings to all our Readers*





# 2012 Provost's Award

The Stirling Provost's Award is given every two years for outstanding service in a variety of fields, and this year Killearn is proud to have two winners in the Services to the Community category.

As the work continues on the renovation of our Village Hall, it is entirely appropriate that a Provost's Award has been given to Brian Simmers. In 2008, Brian was invited to head the Village Hall Development Project under the auspices of KCFC. His expertise in accountancy, combined with his sporting background, suggested he had the skills and experience to carry through this major project. Brian has given most of his waking hours over the past four years to forwarding the renovation.

It has not all been plain sailing, but Brian has demonstrated remarkable resilience in steering the project through the stages at which architects were appointed, tenders invited and the contractors selected. The 'work in progress' evident at the Village Hall is some reward for all the hours of work Brian has devoted to the project, but it will be the anticipated opening in the Spring of 2013 that will be the ultimate achievement of which the village will be justly proud.



Brian Simmers (left) and Iain Somerville with their awards

Iain Somerville is another unsung hero receiving a Stirling Provost Award for Services to the Community. For more than twelve seasons now, Iain has been Mini Convenor of Strathendrick Rugby Club:

organising fixtures, recruiting coaches, encouraging and training young players, and arranging visits to internationals and social events. Iain has been the prime mover behind the Annual Mini Rugby Charity Tournament at Fintry which, over six years, has raised more than £25,000 for local hospices: CHAS, The Prince and Princess of Wales Hospice and Strathcarron Hospice.

But Iain is not just a rugby man – he is the organiser of the Wildwolves Youth Hockey Club at Balfron Campus; he has been Honorary Treasurer of Aberfoyle Golf Club for many years, and he is also Treasurer of ENABLE Glasgow. As the *Courier* goes to press Iain has also been nominated for an Active Stirling Sports Award.

The *Courier*, Killearn CC, KCFC and Strathendrick Rugby Club congratulate Brian and Iain, who were presented with their Awards at a ceremony at Stirling Castle at the end of October.

NB

## LETTERS TO THE EDITOR

We welcome your letters and emails.

Please include your full address

(not necessarily for publication).

We reserve the right to edit letters.

Dear Sir

I suspect the vast majority of the readers of your excellent publication are drivers, and wonder if I, through the *Courier*, could ask those who park at Spar to be a little more considerate.

There is a huge car park for customers at the rear and there is really no need to 'abandon' cars at the entrance in such a way as to cause obstruction. I've even seen cars parked opposite cars parked in the disabled bay thus really blocking the road!

You may not know, but the Community Council are trying to resolve this situation and it would be for the good of all if drivers considered each other.

In any event, the short walk from the car park to the shop will give you some exercise, albeit a little.

Sincerely

Fed-up of Birch Road

Dear Sir

You were kind enough to print a letter from me in your Spring edition regarding the thoughtlessness of some residents whose neighbours are deprived of light due to the height of their hedges and trees. You responded by stating that there may be a law passed by the Scottish Government to tackle this problem.

Your readers might be interested to learn it is very likely that this law will come into force next year. It calls for mediation between neighbours initially and then, if that fails, the Council will step in and deal with the offending growth.

We can expect to hear the sound of many chain saws in the coming years and then – let there be light!

Sincerely

Paleface, New Endrick Road

***Killearn Courier***  
***published by:***



Anyone wishing to contribute to the Spring edition is reminded that it will be distributed on 9 March 2013.

**Advertisements and artwork** should be handed to one of our Advertising Executives by Friday, 25 January 2013. Contact Gwen Stewart on 550856 or Sara Hudson on 550806.

**Contributions and letters** to the editor should be in the hands of the editorial team by Friday, 25 January 2013. Send them to:

**36 New Endrick Road, G63 9QT or email to: [courier@kcfc.co.uk](mailto:courier@kcfc.co.uk)**

**Please support our advertisers who make the *Courier* possible.**

*The Courier is not responsible for the content of advertisements.*

All past editions of the *Courier* are available to view or download on the KCFC website:

[www.kcfc.co.uk](http://www.kcfc.co.uk)

and click the Courier tab

**Cover Photograph: - Martin Culshaw**

# Editorial

Hello there and welcome to the 2012 winter edition of the Courier. We hope you have had a good year in spite of it having the worst rainfall weather on record. Thank you for your complimentary comments; we must be doing something right but none of it would be possible without the dedication of the Courier team, our advertisers and those who support us in other ways. Our heartfelt thanks go to them all.

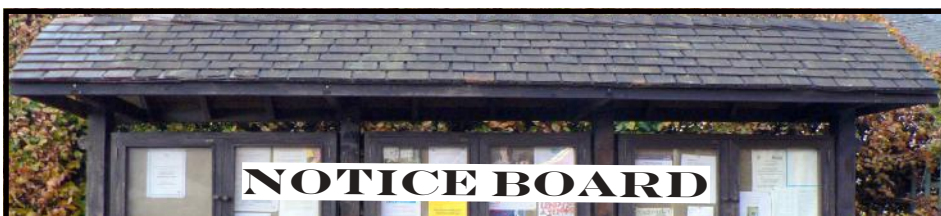
Christmas approaches rapidly; the festive season gives us the opportunity to relax and enjoy quality time with family and friends and allows us to forget, for a wee while anyway, any bad bits of 2012.

Then comes the New Year when we reflect on what 2013 may hold and perhaps make resolutions to do this, that or the other. One resolution we should make is to take more interest in our community. After all, we carry the responsibility of ensuring that Killearn remains a good place to live. We owe it to those who will come after us not just ourselves. However, if we want the Killearn of the future to be a good place to live, we need to involve ourselves in our community. There is little to be gained by sitting back until the bulldozers and cement mixers arrive and then start jumping up and down and stamping your feet; you are too late. The KCC Report mentions the Local Plan and Community Planning, the latter allowing you more say in matters affecting your community. All you have to do is to resolve to take an interest and be involved and then do it! Enjoy this edition. Inside you'll find contributions from our regulars as well as many other articles including ones giving you the opportunity to support our local businesses, something we all should do.

From everyone at the Courier, have a very Merry Christmas and a Happy and Prosperous New Year.

Ian

Ian Dickie, Editor



- |              |                                                                                                                                                                                                                                                                    |
|--------------|--------------------------------------------------------------------------------------------------------------------------------------------------------------------------------------------------------------------------------------------------------------------|
| 14 Nov       | <i>Strathendrick Rotary Club</i> meeting. Black Bull Hotel, 6.30 for 7 pm, thereafter every Monday except bank holidays and the fifth Monday of a five Monday month. Contact Steve Holden (550764).                                                                |
| 21 Nov       | <i>Killearn Community Council</i> meeting. Killearn Primary School, 8pm.                                                                                                                                                                                           |
| 22 Nov       | <i>Drymen &amp; District Local History Society</i> talk by Sue Furness and Fiona Jackson, 'Stories from the Ruins: Community archaeology at High Morlaggan'. Drymen Village Hall, 7.45pm. <a href="http://www.drymen-history.org.uk">www.drymen-history.org.uk</a> |
| 22-24 Nov    | <i>FADs. A Christmas Carol</i> . Menzies Hall, Fintry, Thurs and Fri 7.30pm and Sat 5pm and 8pm Tickets & information from Liz Brown (860078).                                                                                                                     |
| 29 Nov       | <i>Killearn Health Centre</i> closed for staff training.                                                                                                                                                                                                           |
| 29 Nov-1 Dec | <i>FADs. A Christmas Carol</i> . Menzies Hall, Fintry. Details above.                                                                                                                                                                                              |
| 30 Nov       | <i>Strathendrick Film Society</i> showing <i>The Help</i> . Balfon Campus, 7.30pm.                                                                                                                                                                                 |
| 1 Dec        | <i>Killearn Country Market</i> . Kirk Hall, 10am – 1pm. Contact D. Tucker (551060).                                                                                                                                                                                |
| 2 Dec        | <i>Killearn Kirk</i> . Holy Communion, 10.30am.                                                                                                                                                                                                                    |
| 4 Dec        | <i>The Guild</i> . Christmas evening with Balfon Community Choir. Kirk Hall, 7.30pm.                                                                                                                                                                               |
| 6 Dec        | <i>Thursday Club</i> . Christmas lunch. Winnock Hotel, Drymen, 12.30pm for 1pm. Contact Peggy Gardiner (550558).                                                                                                                                                   |
| 7 Dec        | <i>Strathendrick Film Society</i> showing <i>Warhorse</i> . Balfon Campus, 7.30pm.                                                                                                                                                                                 |
| 14 Dec       | <i>Strathendrick Singers</i> . Christmas Concert featuring works by Chilcott, Rutter and Ken Johnston. Killearn Kirk, 7.30pm. Tickets at door or from choir members.                                                                                               |
| 16 Dec       | <i>Killearn Kirk</i> . Nativity Play, 10.30am.                                                                                                                                                                                                                     |
| 19 Dec       | <i>Killearn Community Council</i> meeting. Killearn Primary School, 8pm.                                                                                                                                                                                           |
| 24 Dec       | <i>Killearn Kirk</i> . Watch night service, 11.30pm.                                                                                                                                                                                                               |
| 25 Dec       | <i>Killearn Kirk</i> . Christmas Day service, 10.30am.                                                                                                                                                                                                             |
| 25-26 Dec    | <i>Killearn Health Centre</i> closed. Re-opens Thursday, 27 December at 8 am.                                                                                                                                                                                      |
| 1-2 Jan      | <i>Killearn Health Centre</i> closed. Re-opens Thursday, 3 January at 8am.                                                                                                                                                                                         |
| 5 Jan        | <i>Killearn Country Market</i> . Kirk Hall, 10am. – 1pm. Contact D, Tucker (551060).                                                                                                                                                                               |
| 10 Jan       | <i>Thursday Club</i> First meeting. Kirk Hall, 2pm – 4pm and every Thursday thereafter. Contact Peggy Gardner (550558).                                                                                                                                            |
| 15 Jan       | <i>The Guild</i> talk by Rev Moira McCormack, 'Face to Proclaim'. Kirk Hall, 7.30pm.                                                                                                                                                                               |
| 16 Jan       | <i>Killearn Community Council</i> meeting. Killearn Primary School, 8pm.                                                                                                                                                                                           |
| 24 Jan       | <i>The Guild</i> . Joint meeting with the Thursday Club. Activity with Jean Woodburn. Kirk Hall, 2pm – 4pm.                                                                                                                                                        |
| 24 Jan       | <i>Drymen &amp; District Local History Society</i> talk by Mary Bates, 'Travels with My Grandfather'. Drymen Village Hall, 7.45pm.                                                                                                                                 |
| 1 Feb        | <i>Strathendrick Film Society</i> showing <i>Rear Window</i> . Balfon Campus, 7.30pm.                                                                                                                                                                              |
| 2 Feb        | <i>Killearn Country Market</i> . Kirk Hall, 10am – 1pm. Contact D. Tucker (551060).                                                                                                                                                                                |
| 5 Feb        | <i>The Guild</i> talk by David Wilson, 'Passage to India'. Kirk Hall, 7.30pm.                                                                                                                                                                                      |
| 6 Feb        | <i>Killearn Horticultural Society</i> AGM followed by quiz. Killearn Primary School, 7.30 pm. All welcome.                                                                                                                                                         |
| 15 Feb       | <i>The Guild</i> talk by Theresa Prescott, 'Journey with Dementia'. Kirk Hall, 7.30pm.                                                                                                                                                                             |
| 16 Feb       | <i>Strathendrick Singers</i> . Musical coffee morning. Kirk Hall, 10am – noon. Contact Pat Ashworth (550074). <a href="http://www.strathendricksingers.org.uk">www.strathendricksingers.org.uk</a>                                                                 |
| 20 Feb       | <i>Killearn Community Council</i> meeting. Killearn Primary School, 8pm.                                                                                                                                                                                           |
| 28 Feb       | <i>Drymen &amp; District Local History Society</i> talk by Dr Alex Hale, 'The Clyde Controversy: an enduring story of crannogs, fakes and forgers.' Drymen Village Hall, 7.45pm.                                                                                   |
| 1 Mar        | <i>Strathendrick Film Society</i> showing <i>Cyrano de Bergerac</i> . Balfon Campus, 7.30pm.                                                                                                                                                                       |
| 2 Mar        | <i>Killearn Country Market</i> . Kirk Hall, 10am – 1pm. Contact D.Tucker (551060).                                                                                                                                                                                 |
| 5 Mar        | <i>The Guild</i> . Project evening. Kirk Hall, 7.30pm.                                                                                                                                                                                                             |
| 9 Mar        | <i>Killearn Horticultural Society</i> . Whist drive, tea and cakes. Kirk Hall, 7.30pm.                                                                                                                                                                             |
| 15 Mar       | <i>Killearn Golden Years Club</i> . Annual Dinner. Black Bull, 7 for 7.30pm.                                                                                                                                                                                       |
| 15 Mar       | <i>Strathendrick Film Society</i> showing <i>Left Right and Centre</i> . Balfon Campus, 7.30pm.                                                                                                                                                                    |
| 19 Mar       | <i>The Guild</i> . AGM followed by lunch. Black Bull, 12.30pm.                                                                                                                                                                                                     |
| 20 Mar       | <i>Killearn Community Council</i> meeting. Killearn Primary School, 8pm.                                                                                                                                                                                           |

If you have any dates for the Spring issue of the Diary (mid March until the end of August), please contact Heather McArthur (550137), [heather.mcarthur@virgin.net](mailto:heather.mcarthur@virgin.net)



## Keenan – Kidd



Stuart Kidd of Killearn and Miss Daniella Keenan of East Kilbride were married at Inveraray Church on 19 May 2012. The reception was at Invercottage Restaurant, Strathlachlan, Argyll. Stuart works as a musician and Daniella's job is Project Manager for the music charity *Live Music Now*. The couple will make their home in Glasgow.

## Cross – Bogie



On a stunning afternoon on 28 September 2012, with a sensational backdrop of Taormina in Sicily, Richard Murray Bogie from Allan Road Killearn, a graphic designer, married Gemma Charlotte Louise Cross, a medical doctor from Bearsden. They tied the knot celebrating with close friends and family.

## Have you got a story to tell?

The Killearn media project is underway and primary school pupils have used videocams and audio equipment to record interviews with older people retelling stories of Killearn village life.

The renovation of the Village Hall is being recorded with a time-lapse camera; documentary footage is being filmed and interviews conducted as the work progresses.

Would you like to learn how to use a camcorder, audio equipment and editing packages? Would you like to help make this documentary about your Village Hall?

If so, now is the time to get in touch. No previous experience is necessary. Guided by media professionals who live in the village, you can help tell this story.

### Village secrets

As a new dimension to this multimedia project – that will contribute to an audio-visual display in the new Village

Hall – we are inviting local people to tell their favourite stories illustrating the social history of our village. We plan to make a series of short films that reveal little known tales of Killearn, and we invite you to help research and record a story.

Where was *The Place of Killearn* – the grand house in the cow field? Where did the railway run through the Endrick valley? What is the story of Killearn Hospital? What is the origin and history of Killearn Glen? What is your favourite village secret?

Do you have photographs old or new that would add to an interesting montage portraying life in Killearn as part of the audio-visual display?

To discuss your ideas or to get involved with any of the above, please contact:

Jaqui McAlpine (551659)

email: [jaquimcalpine@hotmail.com](mailto:jaquimcalpine@hotmail.com)

or Nick Hawkins

email: [nick.hawkins@bbc.co.uk](mailto:nick.hawkins@bbc.co.uk)

## Heather Joins the Courier

The Courier has been on the lookout for a Cub Reporter for a very long time – Siobhan Wilson was our first recruit back in the day, and she set a very high standard for the aspiring young journalists who followed her. Heather Banks is the latest to take up the challenge, and has come to the Courier full of ideas. We hope you enjoy her first two pieces in this edition, and look forward to many more.

But let's let Heather speak for herself!

*Heather says:*

I am a local of Killearn, 16, in 5th year at Balfon, looking to study multimedia journalism at university, and have a weekend job at The Old Mill. I have work experience in the BBC, and also as part of the school newspaper. I am a keen dancer, and am pleased to join the Killearn Courier team.





### Christmas Trees

TREES GROWN  
ON THE FARM

READY CUT OR YOU CAN CUT YOUR OWN  
HOLLY, MISTLETOE, HOMEMADE MINCE PIES,  
CHUTNEYS AND JAMS ALSO AVAILABLE

S & J DUFF & SON

WESTER AUCHENTROIG  
BUCHLYVIE

(on the B835 between Buchlyvie and Aberfoyle)

TEL: 01360 850 404  
MOBILE: 07710 579 752

OPEN 1ST DECEMBER

Vacancy for a part-time stylist – phone 551160




## Why travel to town?

### We specialise in colouring and cutting

phone: 01360 551160 for an appointment



[lynnemcicar@btinternet.com](mailto:lynnemcicar@btinternet.com)




11 Main Street, Killearn, Stirlingshire, G63 9RJ

www.lmhhair.co.uk

# A Ruby Christmas



Donald Duncan has served behind the counter of Macdonald Butchers for 40 years. That means 40 Christmas's this year, with the ever hopeful piece of mistletoe suspended above the counter.

For most of the year, life as the local butcher revolves around the mid-week pie and sausage making; the weekend rush of Sunday roasts and Saturday night food for friends, or laying out the summertime BBQ food on the off-chance that it might stay dry until 6pm. Then there's adorning the shop with postcards sent from far off places by loyal customers with dubious taste – and I don't refer to their culinary taste buds. But what's the difference for Donald the butcher

when it comes to Christmas? Hanging the fresh mistletoe, frantic steak pie making, a constant stream of customers over the threshold, and the preparation of the Christmas orders. The busiest day of the year begins on 23 December when it can be 3 a.m. the next morning before Donald heads home for a well-earned dram and a couple of hours sleep before he has to be back behind the counter. In 40 years he has served around 4,000 turkeys and made over 15,000 steak pies for New Year. Along with Douglas, he still manages to smile, remember all his customers by name and crack jokes which are also about 40 years old.

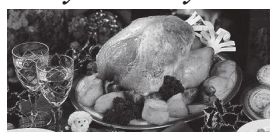
It's a ruby anniversary year in more ways than one. Donald came to Killearn 40 years ago when he married Janet. Apart from 10 years off to bring up daughter Sarah, Janet has continued to run the village post office, a job she, too, started 40 years ago! The couple celebrated their anniversary by renewing their wedding vows in the sunshine of La Source Spa Hotel in Grenada. They are pictured here with the local bishop on the day of their anniversary. Congratulations!



## DAVID Mac DONALD

*Quality Family Butcher*

The Square  
Drymen  
Tel: 01360 660512



54 Main Street  
Killearn  
Tel: 01360 550502

Top quality Beef, Lamb, Pork, Poultry, Fish and Game

**ORDER YOUR AWARD-WINNING STEAK PIES and FREE-RANGE TURKEYS FOR XMAS AND THE NEW YEAR**

**Donald and Douglas wish everyone best wishes for Christmas and the New Year**

Architects

New Build Houses  
Extensions  
Conservation  
Green Buildings  
House Types



**Thomas Robinson Architects**

[www.thomasrobinsonarchitects.co.uk](http://www.thomasrobinsonarchitects.co.uk)

01360 661144



**BAXTER**  
Accounting & Tax Services



11 Milngavie Rd, Strathblane

*For all the accounting and tax needs of you and your business*

- Self Assessment
- Accounts preparation
- Corporation tax
- Payroll and PAYE
- VAT
- Capital Gains & Inheritance tax
- Companies House admin
- Stamp duty & SDLT

**01360 770320**

**[www.baxtertax.co.uk](http://www.baxtertax.co.uk)**

**[enquiries@baxtertax.co.uk](mailto:enquiries@baxtertax.co.uk)**

Stuarts Fresh Fish Van  
from Arbroath



Orders now taken for a festive gift of a pair of Arbroath Smokies delivered anywhere in Britain, vacuum-packed, for £10 per pair (inc. p&p).  
Next Day Delivery

Tel: 01241 876254 or order online at:  
[www.arbroathsmokiesdirect.co.uk](http://www.arbroathsmokiesdirect.co.uk)

WEDNESDAY – Balfron (am), Killearn (pm)



# Working towards the economic, social and ecological sustainability of Killearn



<b>E</b> NERGY	<b>C</b> OMMUNITY	<b>O</b> ENVIR NMENT
<p>Cutting fuel use – car sharing, cycling, public transport</p> <p>Fuel efficiency – home insulation, draught proofing, home usage <i>Ideas – Links on a website, information events, free house surveys (accessing thermal imaging equipment)</i></p> <p>Alternative fuels – renewable energy, energy production <i>Ideas – Information events, links on web site</i></p>	<p>Local activities – youth, sport and leisure activities (to cut travel need and increase quality of life) <i>Ideas – local database/diary of activities, volunteering event for local groups, supporting local groups through grants/advice/publicity, health promotion information</i></p> <p>Local employment – full, part time, and volunteering <i>Ideas – signposting to employment support, advertising or skills swap credit scheme</i></p> <p>Local facilities – facilities which support local groups and community involvement <i>Ideas – volunteering event to support land management, database/diary of facilities</i></p>	<p>Green space for all – public space, green space policy, management of local environment <i>Ideas – disseminate information on policy, support land maintenance and use</i></p> <p>Promoting areas of bio-diversity – wildlife talks and events by rangers, support bee campaign, wildlife friendly gardening information, links with school and youth organisations</p> <p>Grow Your Own – support and advice, gardening, allotment, smallholding, farming, community fruit trees</p> <p>Waste management – reuse and recycling, composting, reducing packaging and plastic use</p>

Sustainable Killearn grew out of an environment event run by the Community Council and is now a working group of Killearn Community Futures Company.

We are a very small band with very big ideas. We would love to hear your ideas and hopes for the village, and we are very keen to have new members.

So far we have hosted ‘Growing Green’ – a gardening and local food event and ‘Sustainable Communities’ – a local skills and diversity event. We hope you find our ‘Did you know?’ leaflet in this issue of the *Courier* useful.


We have received grant funding for publicity and events and have A3 photocopy/laminating equipment, stationery and gazebos available to support all the groups within the village (you may have seen our gazebos at the Hoolie).

We will have a stall at the Country Market each month which we see as an opportunity to publicise new ideas, be available to answer questions, and get to know you and what you want from our group. We’ll also be able to hand out resources that we gather.

A beautiful new village noticeboard will go up next to the Village Hall after renovations, purchased by Sustainable Killearn. Along with other information, we would like to use it for ‘wants and offers’ along the lines of freecycle, to promote a ‘skills token’ system, where people offer/request services in return for credits (used to be typical in babysitting circles) and to signpost events that promote the aims of the group.

Please come and chat with us at the Country Market or you can contact us via the KCFC website.

*Heather Wright*



## BODY CONTROL PILATES® CLASSES

**Body Control Pilates® transforms the way you use your body, using slow, controlled movement to improve posture, tone and general wellbeing.**

***Small class sizes allow for individual tuition, making Body Control Pilates® a benchmark for safe and effective teaching of the world-famous Method.***

**For details of daytime and evening classes in Gartocharn and Blanefield, call Jane Meek on 01360 771742/07759182236 or e-mail [janemfr@tiscali.co.uk](mailto:janemfr@tiscali.co.uk)**

Body Control Pilates and the Body Control Pilates logo are registered Trade Marks used under licence.

## OLDHALL HOLIDAY COTTAGES

*Also available for short breaks*

**Too many weekend guests?!  
Planning a wedding  
or a party?  
We can accommodate you.**

www.oldhallcottages.net  
e: [oldhall@glensidehouse.co.uk](mailto:oldhall@glensidehouse.co.uk)  
T: 01360 440136

# Freewheelin *by Steve* – A Tale of Two Kirks

Clear blue Sunday afternoon sky; the air feels cold and the sun hangs low, autumn is surely and quickly progressing into another long winter. Fingers on the handlebars feeling numb, ears nipping... again forgotten to adapt to the changing seasons having not lifted my woolly bunnet and thick warm gloves on exiting the Freewheelin Manglery... Bhrrrr! On these short winter days it's good to enjoy a quick run out on the Old Flying Scot, getting home – hopefully some time before darkness descends and also hopefully to a Sunday roast with all the trimmings, of course. From Killearn Main Street we head off out the Balfron Road, up through Balfron Main Street and onwards into Roman Road. This back road to Fintry offers various benefits... little traffic... turns promptly into single track road... undulating rural terrain and stunning views over the Campsie Fells and eastwards towards Meikle Binn... site of a Royal Navy two-seater Fairey Firefly crash near the summit in January 1950, killing both crew.

On arriving in Fintry, I always like to pass through the village new town and cycle on to the original parish which is situated a mile or so further on near the Clachan Hotel, now sadly closed (once the source of a fine Sunday roast). Adjacent to the hotel stands the always vaguely familiar Fintry Kirk. On closer inspection it becomes clear why... The building is a double... a twin for what is now Killearn Village Hall, presently the subject of a major refurbishment and modernisation. As luck would have it, today there is a coffee afternoon in the Fintry Kirk and I am kindly invited



to join those already tucking into homemade scones with jam, meringues and piping hot tea. The inside of the Kirk is a revelation... seeming so plain and inconspicuous from without... but within is lit by the bright warm glow of the low winter sun streaming through exquisite stained glass windows illuminating the dark wood and brass of the pews and fittings. The organ plays loudly and music fills the solemn space.

Further investigations reveal that both kirks were designed and erected by the Stirling builder Mr James McLuckie. Fintry Kirk was erected in 1823 (still used for it's original purpose to this day) and curiously built around the original 1642 building. Only on completion of the new kirk was the old one allowed to be demolished. The bell from the original now hangs in the new... recycling 19th-century style. Killearn was a green field build, completed in 1826 and continuing in use until 1882 when it was deemed too small for the increasing congregation... changed days indeed. The Vestry and Session House were added in 1874 free of charge by the Heritors, about whom the then minister, the Rt Reverend Colin McNaughton, commented, 'The Killearn heritors in my day could not be surpassed for generosity, sympathy and uprightness, and I am sure they have not lost their good character.' One wonders if the same spirit prevails today... Anyway, the Fintry Kirk gives us the chance to see what the Killearn Village Hall may once have looked like before its interior pews and pulpit were stripped out and the gross carbuncle extensions (now thankfully demolished) added in 1953. I would thoroughly encourage anyone to visit to the Fintry Kirk and walk around both out and inside, if you are lucky enough to find it open.

Let's hope that on completion of the Killearn Village Hall refurbishment this lovely old building can once again be a source of pride for the village and be put to much good use in the years to come. Well, now that the cakes are all done and the tea is cold, I'm for the off! Back in the freezing saddle, gloveless and hatless; see warm breath white in the cold damp air... let's hope the roast is all ready when Freewheelin gets home.

Keep cycling and keep safe... remember the bunnet and gloves!

*Regards, Steve*

Freewheelin' can be contacted at [freewheelin@kcf.co.uk](mailto:freewheelin@kcf.co.uk)

## ***Extracts from substance of agreement entered into on 2nd June 1825:***

Mr James McLuckie builder of Stirling – Mr McLuckie has agreed to execute and completely finish in the most efficient and tradesman like manner the whole mason, wright, slater, plumber, plaster, iron, paint work in every respect like the church which he built at Fintry and agreeable to the specifications and descriptions thereof as far as they go. *There were the following additional conditions:*

The stones were to be obtained from such quarries as were approved by the superintendent.

The foundations were to be dug out to the solid rock. The tower was to be six inches thicker on the walls and lathed under the plaster.

*Killearn Build further conditions:* A £1 per day penalty for any extra days works after 1 July 1826 that was required to complete the contract.

Also on 1 September 1826, there was a meeting to divide up the seats among the local heritor's. In other words... who gets the best seats! With grateful thanks to *All Killearn Archive*, and Alison, Gill and Peter of Drymen Historical Society, [www.drymen-history.org.uk/contact.html](http://www.drymen-history.org.uk/contact.html)





## Killlearn Health Centre News

### Flu vaccinations now available

We encourage all patients who are entitled to a flu vaccination to contact the surgery (550339) to arrange a suitable appointment. You are eligible for a flu vaccination if you are aged 65 or over, or if you suffer from diabetes, chronic respiratory, heart, kidney, neurological disease, including stroke or TIA, or you are immunosuppressed due to disease or treatment. You are also eligible for a flu vaccine if you are a carer or are pregnant.

### Online prescription ordering

Don't forget you can order your prescriptions 24/7 at [www.killlearnhealthcentre.com](http://www.killlearnhealthcentre.com).

### Text reminders

We are trialling a new text service, which, the day before your appointment, sends a reminder text to your mobile phone, a handy service in today's busy world. If we don't have it already, please provide us with your mobile phone number. You can contact us via [www.killlearnhealthcentre.com](http://www.killlearnhealthcentre.com) or fill in a slip at reception.

### Staff training

Please note that we will be closed from 12.30pm on Thursday, 29 November, and Wednesday, 6 February 2013 for staff training. If you require medical assistance please contact:

NHS 24 (08454 24 24 24).

### Xmas and New Year holidays

We will be closed on 25 and 26 December 2012 and 1 and 2 January 2013. If you need medical attention on any of these days, please contact NHS 24. Remember our website is open 365 days a year to take any prescription requests.

Finally, we wish all readers a very happy and prosperous New Year.

## Pharmacy Extension

Killlearn Pharmacy occupies two thirds of Lumsdaine Halls, the old church halls. Local pharmacist Kenny More is extending his premises into the remaining area to provide a suite of therapy rooms to be known as Lumsdaine Halls Therapy Rooms.

The alterations, which should be completed towards the end of November, will house three therapy rooms with waiting and reception area, and will be accessed from both within the pharmacy and externally. The pharmacy currently plays host to some therapies like the foot health clinic, and the provision of these new facilities sees an extension of the range of services that could be provided. It is anticipated that the new services will include physiotherapy, counselling, speech and language therapy, cognitive behavioural therapy, acupuncture, therapeutic massage and osteopathy.

These services would be to complement the health provision already provided through the health centre and the pharmacy.

## John Muir Coast to Coast Trail



The John Muir Coast to Coast Trail is a new Long Distance Route planned between Dunbar and Helensburgh. It is a flagship project within the Central Scotland Green Network initiative and is supported by the Scottish government.

The development of the trail is being led by Scottish Natural Heritage (SNH) in partnership with Local Authorities, Trusts, landowners, communities and other key partners along the route. The Trail is due to be launched in April 2014 as part of the celebrations to commemorate the centenary of John Muir's death. This is just one of the many events that will take place during the year to celebrate the Scots-born naturalist's life and honour his legacy.

It is intended that communities along the route, such as Killlearn, will benefit from the economic impact of the Trail. Trail users will also be able to benefit from the wide range of services on offer such as shops, pubs, banks and accommodation.

The route of the trail has still to be finalised in some areas, and this includes the section close to Killlearn. SNH has been working with the Killlearn Paths Group and Stirling Council to find out which route is most suitable. Negotiations are proceeding with local landowners and it is uncertain whether Killlearn will be on the route. However, if sufficient support is given by the community, it will help SNH in their negotiations. The enclosed insert tells you how to make your voice heard, or email [stuart.davies@snh.gov.uk](mailto:stuart.davies@snh.gov.uk) or [paths@kcfc.co.uk](mailto:paths@kcfc.co.uk).

# EDENMILL

## Food Festival



EDENMILL FARM

**Saturday 24th & Sunday 25th**  
**NOVEMBER**

# 2012

9am to 5pm

Entry: £3 Adults £1 Children  
See website for details  
[www.edenmill.co.uk](http://www.edenmill.co.uk)

Edenmill Farm, Blanefield  
Glasgow G63 9AX  
**Tel: 01360 771 707**

- Butchery demonstration by Edenmill butchers
- Cooking Demos by, Our own Neil Clark, Tom Lewis and the Cook School Scotland
- Food and Drinks on sale
- Whisky tasting by Glengoyne
- Craft and food stalls
- Santa's grotto
- Children's play area and bouncy castle
- All indoors
- Santa's Reindeer & farm animals

THE COOK SCHOOL SCOTLAND

7 Moorfield North Industrial Park, Crosshouse, Kilmarnock, KA2 0FE (Sat Nav Postcode: KA1 2RS)  
Tel: (01563) 550008 [www.cookschool.org](http://www.cookschool.org)



# KCFC Paths Group News

Since the last issue of the *Courier*, a further action day was held on 8 July where the work concentrated on path widening, levelling and drainage on the West Highland Way between the Oakwood entrance and the sewage works. This work added to similar activities last year and was carried out under the supervision of Dougie Flynn, Stirling Council Ranger. Like last year and the previously reported work on the north side of the A81, it was another wet day. The west of Scotland weather does not deter the Path Group Volunteers or West Highland Way walkers, however, and much good work was achieved despite the frequent need to step aside and let walkers of every nationality pass safely by. It was a case of smiles all round despite the muddy puddles and soaking rain.



Proposed Drumtian Road to Boquhan Path

photo: Norman McNab

These accounts of Path Group activities are naturally repetitive, as are our invitations to come and help. Inevitably our numbers are depleted

because most of the work coincides with holidays. Hence the greater the resource pool the more we can achieve. It is good fun, sociable and satisfying. If you enjoy walking any of the paths around Killearn, please consider becoming a volunteer. It will only be an occasional demand on your time.

The Path Group is not only concerned with existing paths. We have vision and ambition to open up more routes which would provide off-road opportunities for connecting communities and encouraging healthy recreation. To realise these ambitions requires application and effort. Knowledge helps but nothing exceeds enthusiasm for achieving results. If you would like to help, please let us know by phoning:

Alice Bell (440320) or Norman McNab (550441)  
or email [paths@kcfc.co.uk](mailto:paths@kcfc.co.uk).

The survey of the proposed Drumtian Road to Boquhan path (*photo above*) is almost complete. The next stage will be to obtain tenders from contractors and meet the challenge of funding the work. The intention is to construct a 1.6m firm surfaced path as far as the Balfroon Station unclassified road junction with the A875 at the Fintry crossroads. The path will provide a delightful, safe, scenic alternative to the pavement verge of the A875.

A longer term ambition is to extend this path route to provide a quiet walking and cycling route all the way to Balfroon via Jenny Gunn's Loan.

Christmas at

# EDENMILL

One stop CHRISTMAS shop!

- ★ ALL TYPES OF CHRISTMAS TREES FOR SALE, ALSO STANDS & WREATHS
- ★ TREES ARE TOP QUALITY & FRESHLY CUT
- ★ DECORATIONS SALE
- ★ EVERYTHING FOR CHRISTMAS DINNER - TURKEY & ALL TRIMMINGS.
- ★ ALL PRODUCE REARED BY & EXCLUSIVELY FOR EDENMILL
- ★ SANTA'S GROTTO EVERY WEEKEND BETWEEN 24TH NOV TO 16TH DEC 2012
- ★ REINDEER & FARM ANIMALS, CHILDREN'S PLAY AREA

**Glasgow Outlets:**  
West of Scotland Cricket Club, Peel Street &  
Western Tennis Club, Hyndland Road



**EDENMILL FARM**  
Stockiemuir Rd,  
Blanefield,  
Glasgow G63 9AX  
**01360 771 707**



*Outlets also in Stirling at:*  
**Stirling County RFC**  
*& Edinburgh at:*  
**Drum Farm, Danderhall**

NMcN



# 1938 Rover 16



The Rover Company started manufacturing cars in 1904 and continued until 1967, when it was sold to British Leyland Motor Corporation.

Rover had initially manufactured bicycles and motorbikes. A 12hp model was introduced in 1912 which was so successful that production on all other cars was dropped to concentrate on the 12hp car.

During the First World War they produced motorcycles and lorries.

From 1923 to 1935 the company did not pay any dividends as losses were sustained for many years. In the early 1930s, the Rover 10/25 was produced using the same body as the Hillman Minx.

The car pictured is a 'Rover 16' known as a P2, manufactured in 1938. It has a 2147cc engine RAC rated at 16.9hp and a 4-speed gearbox with synchromesh in 3rd and 4th gears. Top speed was 70–75mph and a 0–60 time of 28 seconds – by today's standards it is no speedster. Cost new: £360. Described as one of Britain's Fine Cars, the Rover P2 was very popular in the mid 30s until 1948, when the P3 was introduced.

From 1937 to 1940, 4,020 'Rover 16' cars were manufactured from a total production of all Rover cars of 52,606.

During World War II, Rover operated two factories producing aero engines and airframes.

In 1940, Rover were asked by the government to support Frank Whittle in developing the gas turbine engine which eventually was taken over by Rolls Royce. In exchange, Rover got the contract to manufacture the Meteor engine for tanks.

In 1947, the Solihull factory resumed production and the Land Rover was born. It was an immediate success, proving to be the company's biggest seller throughout the 1950s, '60s and '70s, as well as the P5 and P6 which was the saloon and coupe powered by a 3.5 litre, V8 engine designed by Buick. This engine also powered Range Rovers, MGB and many limited production sports cars. The latest Range Rover uses it in 4.4 litre form.

*Philip Pain*



## Can the Hoolie Help You?

The Killearn Hoolie 2012 was a great success and once again made a surplus as a result of the support and generosity of local people. So, once again, the Hoolie has funds that can be made available to help community projects and activities.

In the past two years, assistance has been given to Killearn Brownies, Killearn Primary School, Killearn Football Club, All Killearn Archive, the Monday Bridge Club, Killearn Toddlers Group and Killearn Golden Years Club.

Are you involved with a community organisation that operates in the local area?

Could you do more with a little more resource?

Would additional funding help your group to be more enterprising?

If so, please contact:

Jennifer Brown, Killearn Hoolie Chairperson (550681) for further details.

**The Killearn Hoolie would like to hear from you.**

## FRASER C. ROBB

We sell, service and repair all types of Farm and Garden Machinery

**"SHOWROOM NOW OPEN"**



Come in and see the full range of products and services  
We offer our customers excellent service, superb prices and quality product to suit their needs

Stirling Road  
Drymen  
Glasgow  
G63 0AA

T 01360 660 688  
F 01360 660 814

admin@frasercrobb.com  
[www.frasercrobb.co.uk](http://www.frasercrobb.co.uk)



STIHL

LAWNFLITE

HAYTER

Mountfield

MCCORMICK

Kawasaki YAMAHA



# All Killearn Archive Update

AKA has not been particularly active over the past few months, but is hoping to start a number of new projects. We are looking forward to the completion of the Village Hall where we will have the facilities to share with the village the material we have collected in digital form and in real life. Copies of historic photographs, such as the one accompanying this article showing the unveiling of the War Memorial in 1924, will be available on computer. We will also have display cabinets in the new hall for use to show artefacts and records. If anyone is skilled at setting out displays and is willing to help, please contact Helen Loudon (770225).



## Flower Festival

AKA were involved in the Flower Festival at the end of August (see picture above). A PowerPoint presentation showing 'Killearn Then and Now', which concentrated on the area around the Kirk and The Square, ran continuously on the Kirk screen. It was accompanied by John Doig's *Baroque Bites* which was recorded by the Scottish Bach Consort in the Kirk some years ago.

Leaflets were produced, containing a map and notes indicating points of particular interest, to encourage visitors to take a short self-guided walk around the Kirk and The Square. Those following the walk could include a visit to the Old Manse gardens, opened by courtesy of the Dalziel family and their gardener.

## Place of Killearn

AKA has now set up a small sub-group to try to build on the findings of the dig in June. Murray Cook, the Stirling Council archaeologist, organised two tours of the Glen during Scottish Archaeological month in September attended by Killearn residents and a number of people from outwith our immediate area. Murray is very keen to investigate the area further and has suggested projects for further work. These include further excavation work, a detailed survey of the Glen and other areas forming part of the lost planned landscape,

## All Killearn Archives Needs YOU

We are compiling a history of Killearn Hospital for our archives. If you worked in any capacity in the hospital or had any interaction with it, I would be delighted to record your memories for posterity. Your help in this matter would be invaluable and much appreciated. If you can assist with this project please contact me at [jim.snadden@btinternet.com](mailto:jim.snadden@btinternet.com) or by telephone (550834), and we can arrange a suitable time and place to meet.

Doreen Snadden

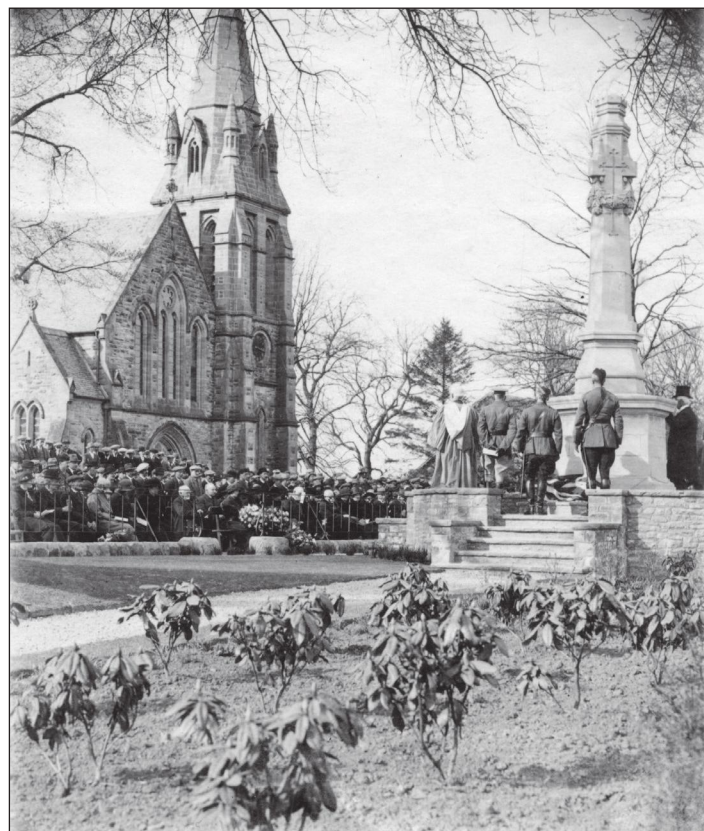
detailed investigation of the trees, rebuilding parts of the fallen masonry, examining archive material and possibly opening up an education facility within the Glen. Murray is due to speak to the Community Council in October so there should be more to discuss after that meeting. It is hoped we can devise specific projects under the guidance of Murray which will allow

funding to be sought to take the work forward. If anyone is interested in getting involved in the investigation (it does not have to be digging), please let Peter or Gill Smith know (550726).

## Future projects

We hope to get back to interviewing longer-term residents. If anyone is willing to share their reminiscences of Killearn, please contact any member of the AKA committee.

We would also like investigate and document the stories of Killearn Hospital and the Killearn Agricultural Show. If anyone has information on either of these topics, please get in touch with any member of the committee.



The War Memorial project has been further progressed by Robert Hunter, and stories are emerging to put with the names. We intend to collate the information available with a view to producing some form of publication which will help to reveal the real people behind the list on the memorial.

HL and PS



# Killearn Cottagers' Horticultural Society Annual Show



Due to the refurbishment of the Village Hall, Killearn Cottagers' Horticultural Society held their 146th Annual Show in the Kirk and Church Hall on 25 August this year. The Kirk was transformed over Thursday evening and Friday to accommodate the Show and associated Flower Festival that was held on Sunday, 26 August.

The weather prior to the Show was disappointing, but with an increase in exhibits in Floral Art and other non-weather dependent sections, the total exhibits was just short of 900 entries, a sterling effort for which all exhibitors are commended.

A magnificent vase of mixed herbaceous exhibited by local exhibitor John Phillips allowed him to win best exhibit in the Cut Flower section and also receive the Quinloch Decanter for best exhibit in Horticulture.

Exhibiting several beautiful vases of dahlias meant that Balloch exhibitor William Macfarlane, returning to exhibiting after a number of years absence, won the Tom Robbie trophy for most points in the dahlia classes.

First place in the 'basket of plenty' class in Fruit & Veg went to Society Chairman Neil Metcalfe and Pat Monaghan. These points contributed to them winning the Society trowel for the most points in the section.

The largest Floral Art section for many years gave the judges some difficult decisions, with Killearn resident Diana Jackson's 'Diamond Jubilee'

arrangement winning the Best Exhibit in Section.

In the Pot Plant section, Kippen grower Sheila McIntyre won best exhibit for her beautiful begonia, also taking the prize for best exhibit in the fuchsia classes.

Dorothy Pattenden from Killearn showed off her housewifery skills, winning both the Preserves Clock for best exhibit in preserves and the Cuthbert Family Salver for most points in baking. The Macintosh Cup for most points in youth baking was won by Harry Hudson.

The Millennium Quaich for most points in the Craft section was closely fought between Show Secretary Glenda Asquith and long-time exhibitor Heather Wright, with the latter winning on the number of firsts gained.

A large entry in the Photographic section amazed the visitors with Alistair Ritchie's various photos giving him most points in that section. The quaich for the best photo was won by Jacquie Pope.

The Art section saw a diverse mixture of painting media along with three-dimensional work and articles in wood.

The Chairman and committee would like to thank the exhibitors along with all the helpers and friends involved for continuing to make Killearn Flower Show the success that it is.

For a more comprehensive results list and further pictures of the day, go to:

[www.killearn.org.uk/kchs](http://www.killearn.org.uk/kchs)

GA and GF





# Colourful Killearn



Volunteers with Colourful Killearn have continued to bring splash of colour to the village, despite the somewhat dispiriting conditions. Our forty tubs and one planter were stocked as usual with ever-reliable daffodils for an early spring show, and boosted in February with an under-planting of pansies. For the summer we took up the official Jubilee colour scheme of red and gold, with a combination of begonias, geraniums and bidens. Begonias particularly seemed to thrive in the damp, cool conditions and made an exceedingly fine display. The tubs were nursed to their peak for the 'walk-around' organised as part of the Kirk Flower Festival at the end of August. By the time you read this, the summer plants will be gone and the next lot of bulbs planted ready for spring.

Extra work-parties during the year have concentrated on the area opposite the Co-op. In addition to tending our four flower beds there, we cleared and tidied the parking area, bringing a berberis 'tangle' under control, replacing broken edging and removing weeds, rubbish and general build-up from the gutters.

The Christmas tree at the Kirk is now a somewhat distant memory, and we are already making arrangements for putting up this year's. We hope it is as shapely as the last one. Saturday, 8 December is the day, 10.00 a.m. the time – come along and give us a hand!

Thanks are due to all our volunteers for the work put into planting and looking after our numerous containers and beds, and to sponsors for providing the wherewithal to keep Killearn Colourful:

- ✂ KCFC for an injection of funds that covered almost all this year's costs;
- ✂ Eden Christmas trees for a substantial discount;
- ✂ Dobbies Garden Centres for a major part of the summer planting;
- ✂ Individuals in the village for donations.

For more information, to make a donation or to offer help, please contact Iain Bowie (550349).

*Iain Bowie*

WWW.  
**BLANEVALLEY**  
• **CONSTRUCTION** •  
.co.uk

**Builders**

**General & New Build**

**Joiners**

**All levels of Projects**

**Electrical**

**Installations & Repairs**

**Roofing**

**Slate, Tile & Flat Roofs**

**Plumbing**

**Domestic and Heating**

**Maintainance**

**All Trades Repairs**

**ONE COMPANY ONE CONTACT ALL TRADES**  
**73 Glasgow road Blanefield, 01360 770983**

## The Bakers & More

The Balforn Bakery, Café & Takeaway

7.30am

5.30pm



**This Christmas Indulge yourself with a beautiful selection of Rolls, Breads, Baguettes and Croissants with our homemade savoury fillings**

**We also have an extensive takeaway menu with delicious hot and cold foods to go.**

**For a little something to follow we have an array of some 50 different homemade cakes and scones**





# A Cacophony of Holes

The last article on the Village Hall's progress congratulated the project on getting to the stage where the additional buildings from the Coronation period had disappeared, and we might have been looking forward to seeing action on the actual rebuild. This update is being written on a glorious October's morning with the outside temperature at 9°C and not a cloud in the sky. So, might we have expected to see more signs of progress?

Well, there are signs of building at the south end next to the Kirk where the foundations of the new back entrance and of the new kitchen block have suddenly appeared. These two structures are being built on foundations roughly one metre higher than the original floor level, as part of the design to have a basement level beside and below the main Hall.

The two main areas which have not, so far, shown great signs of change, however, are the Hall itself and the foundations for the new building. Perhaps we should modify that statement a bit and say that signs of change are not obvious to the casual observer. In reality, the interior of the main hall has been excavated down to level of the new basement floor. If you had been able to stop at the gates and watch the mini-dumper running in and out – or even more so, watch the piles of spoil growing around the site, you would have seen a huge amount of earth and rock; all coming out via the tower door. The two accompanying photographs show the size of the internal excavation where the inside has been dug down to the new floor level, the space lined to keep it dry and the sub-floor put in with drainage from the car park and for the new toilet facilities.



Another huge hole has been dug for the basement of the new reception area at the north (Station Road) end of the complex, but the weather has not been kind for this stage. It is not yet possible to say how much the weather might have set back the completion date, but we suspect there will be some delay. The contractors, who have a fairly sophisticated progress chart, are telling us that, once the foundations are completed at this end of the building, they will be able accurately to revise the timetable. So this is one hole which is not complete.

Other holes in progress, or to be completed, are the trenches for the pile of green 'egg boxes' sitting in the glebe. These are for the waste water drainage from the site, from the car park and from the wash basins, which will eventually be buried in the glebe and take this grey water into the main drain running down Station Road. If you had been able to look into the site a few weeks ago you would have seen more holes for the car park drains and for the founds of the two smaller buildings. And, perhaps more interesting, there is a drill unit boring the deep holes for the heat pumps which will provide warmth for part of the final building.



Brian Simmers' team has been involved in meetings to confirm final internal drawings of the electrical systems and, more directly for future operations, of the final specification for the computing systems, and for the stage and lighting. It has now turned its attention to the internal decoration, carpeting and so on. Meanwhile, the Hall's new Operations Committee is looking forward towards the opening of the hall, and has applied for assistance grants from 'Awards for All' and Stirling Council's Community Grant scheme. By the next issue of the *Courier*, we would hope to have details of what assistance we will have from these sources.

We also take this opportunity to thank those people who responded to our call in the last issue to operate the coffee shop and to act as caretaker/manager. We have not been in touch to move these items on and hope to be doing so as this issue of the *Courier* comes out.

David Rodger



**Official Supplier of**  
**Killearn Primary School Uniforms**

*Needleworx*

- Embroidered logos for schools, clubs and businesses
- Curtain making and alterations

Call Gwenda on 07876028764, email [needleworx4u@yahoo.co.uk](mailto:needleworx4u@yahoo.co.uk)  
[www.needleworx4u.co.uk](http://www.needleworx4u.co.uk) [www.facebook.com/needleworx.co.uk](http://www.facebook.com/needleworx.co.uk)



# Celebrate and Live Well!

Popular culture says that to celebrate and live well requires a person to concentrate on what I need. So if I need something that I know will give me a lot of pleasure and satisfaction, then all I should do is go out and get whatever it is that will give me this joy. However there is another perspective, and it is an emphasis which is very different. This emphasis is expressed by two happy and celebratory events.

The celebration of harvest took place at the beginning of October. Harvest is a simple recognition of all that God has so richly given us in the abundance of food and produce. Therefore we seek to respond and say 'thank you' for all of these varied gifts. Harvest also presents a challenge, because it makes us face up to our responsibility in terms of what and how we respond to those who have so little.

The season of advent and the celebrations of Christmas Day are another opportunity when the community comes together to express our sense of wonder and joy to God in what has been given to us. Yet why do we celebrate? The simple response is that in the birth of Jesus is a physical reminder of the active, visible presence of God. That in this event, Jesus speaks and lives the life of God as God intended us to live. If you were to analyse all the words and teachings of Jesus and then take the first two

priorities that Jesus lived by then they would be this:

'You shall love the Lord your God with all your heart and with all your soul and with all your mind... and the second is ... You shall love your neighbour as yourself.' (Matthew 22:37)

Loving God with all that you are stops us from focusing on just my needs, worries and dreams and loving the person next to me becomes an expression and a measure of how real my love for God really is. I can hardly say I love and worship God if I don't then love my neighbour, even if he or she might be a stubborn so-and-so!

We sometimes, very readily, criticise people because they have somehow failed or not reached up to our standards. The Christian faith is very simple in this respect: if you love God then you have to get on with whoever is your neighbour, the person next to you. That is why so often churches fail, because we lose sight of what real love means. In this way, Christmas Day is a celebration and a reminder that God shows us how we should live, and this comes to us as an imperative: love God and love your neighbour. So have a great Christmas, love God and your neighbour and in so doing, you will live well!

*Lee Messeder  
Killearn Parish Church*

## Balfron Barracudas

Balfron Barracudas is a swimming club based in Balfron. Our aim is to provide training for swimmers who are moving on from learn-to-swim programmes and wish to improve their technique and stamina without the pressures of a competitive swimming club. Training sessions are managed by a team of qualified coaches.

Monday evenings between 7.00–7.45pm and 7.45–8.45pm;  
Thursday evenings between 7.30–8.30pm; Saturday mornings between 11.30 a.m. – 12.30pm and 12.30–1.30pm

For more information, please visit our website:  
[www.balfronbarracudas.org.uk](http://www.balfronbarracudas.org.uk)

Seasonal Greetings  
from  
The Loudon Family



THE QUINLOCH  
Telephone 01360 770225



**Killearn  
PHARMACY**



CRABTREE & EVELYN  
LONDON

**Opening hours:**  
9am - 1pm and 2.15 - 6pm Monday to Friday  
9am - 1pm and 2.15 - 5pm on Saturdays.

Killearn Pharmacy, 13 Balfron Road,  
Killearn G63 9NN  
**Tel/Fax: 01360 550242**  
[www.killearnpharmacy.co.uk](http://www.killearnpharmacy.co.uk)

# Laura Bruce. Beauty

**NOW OPEN**

11 MAIN STREET  
KILLEARN G63 9RJ  
**01360 551 160**  
**07817 106 943**  
[lashes@laurabruce.com](mailto:lashes@laurabruce.com)



## Wrapping Paper and Gift Tags



### What you need:

- ◆ Sheets of light coloured paper
- ◆ White household candle
- ◆ Red and green acrylic paint
- ◆ Wide brush and a pot or jar for each colour
- ◆ Coloured card, ribbon, wool, glitter, sequins and other blingy bits
- ◆ Paper glue or Pritt stick
- ◆ Scissors (pinking shears make nice edges, but ask before using them)

### What to do:

- ◆ Make sure your work surface is protected before you start.
- ◆ Draw your design on the paper using the fat end of the candle – press down hard to get the best result (don't tear the paper!). Stars, spirals, letters of the alphabet all work well.
- ◆ Dilute the paint in a jar with water so that it's like single cream. Any colour can be used, of course, but red and green are Christmassy.
- ◆ Brush the paint evenly over the surface to reveal your waxy drawings.
- ◆ Leave to dry.

### The fun bit:

- ◆ Try cutting out shapes (use a cookie cutter as a template) and stick them to coloured card, punching a hole through the layers and threading with wool or ribbon to make gift tags.
- ◆ Add sparkle by laying a trail of glue and shaking glitter on it.
- ◆ Cut different sizes of the same shape from different coloured papers and put them together for a neat effect.



## Desta Laiolo BALLET & THEATRE SCHOOL

REGISTERED TEACHER AND LIFE MEMBER ROYAL ACADEMY OF DANCE  
REGISTERED TEACHER IMPERIAL SOCIETY TEACHERS OF DANCE  
FELLOW AND EXAMINER OF THE SCOTTISH DANCE TEACHERS ALLIANCE  
CLASSES IN BEARSDEN, KIRKINTILLOCH, KILLEARN & DRYMEN

- **CLASSICAL BALLET**
- **MUSICAL THEATRE**
- **JAZZ**
- **RHYTHM TAP**

**Private Lessons by Arrangement**

**Tel: 0141 942 1998**

**Email: modestalaiolo@aol.com**

www.  
**MacColl**  
Landscaping.com



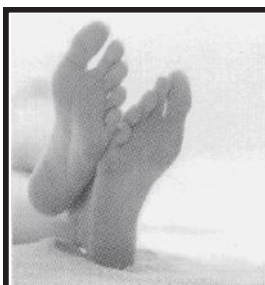
When it comes to gutter maintenance, for many people it is a case of out of sight, out of mind, but ignoring a problem can result in hefty repair bills later on. It is recommended by the Building Research Establishment that gutters are inspected/cleared at least once a year. Ignoring a problem will only result in it getting worse (it won't repair itself!) and possibly causing serious damage to the property. Trapped water in a gutter gets blown by the wind onto fascia boards creating a continuous wet/dry cycle. This can cause wood rot and/or peeling paint, ultimately requiring complete replacement of the whole system if left unchecked.

Using an Omnipole GutterVac. Gutters, beams and ledges are cleaned up to 52 feet high with the operators feet safely on the ground.



**Mob: 07727 045939**

**Email: scott\_maccoll@hotmail.co.uk**



**FOOT HEALTH CLINIC**  
**JACQUELINE MORTON**  
FOOT HEALTH PRACTITIONER  
MAFHP MCFHP

01360 550 374  
07703799112

KILLEARN PHARMACY Saturdays 9am – 1pm  
THE OLD SURGERY, BUCHLYVIE Tuesdays 6pm – 9pm



FREE ESTIMATES

**N. D. STEWART**  
Electrical Services  
Killearn

TEL: 01360 551509

MOBILE: 07970 755414



# Worth the Hassle

It's the same every year. You know Christmas is on the distant horizon when the chocolate Santas appear in the Coop, several inches from the strawberries. It may still only be autumn, but anticipation is everything. There's a lot of truth in that, isn't there. The run-up to Christmas is often every bit as enjoyable as the actual event, in terms of excitement and festive feeling. By the time you read this, adverts for sofas and conservatories in time for Christmas will be saturating the air waves, if past years are anything to go by. People like a target, and advertisers know that. Not only is Christmas coming, but so is winter, and people want to get stuff done before the weather gets even worse.

Could that be one reason why an awful lot of people seem to be building things? There are extensions and conversions and porches all over the place. Bits of scaffolding and heaps of breeze block abound. Napier Road has been a kind of serial building site for months. But the road is at last clearing, and soon there should be no more skips, lorries, building materials and other hazards to shipping. Unless someone else decides that an extension is just what their house needs, and the cycle starts all over again. What one has to concentrate on is how lovely it's all going to look when it's over. Not only is an extension usually a handsome addition to the house, but what has been a yard full of building materials, rubble and mud gets transformed into a garden of eye-catching prettiness. It's magic.

It's a pity that such a chunk of the erstwhile turnip field is now fenced off for the new building project, and it may be inconvenient that children have to walk on the wood chip

path outside the fence to reach the school, but surely the end result will be worth the hassle. The noise of ongoing work and the unsightliness of the building zone must be a pain to live with, but won't it be great to have a few more small houses? It might seem endless at the time, but hopefully once everything is completed and harmony restored, the upset will be a distant memory. It's also surprising how quickly the eye adjusts to changes in the landscape. Whole estates have been built that once looked raw and are now absorbed into the structure of the village, bedded in by trees and hedges and the occasional mossy wall. A few little houses will look just fine.

That is possibly how we are going to have to regard the current chaos at the top of Station Road. Congestion charges are still some way off, but the amount of traffic, both moving and stationary, is discommoding. Dear knows what it would be like if the road didn't widen at the top the way it does. So, what with the eyesore of the kind of holes in the ground that only Tony Robinson would find attractive and the unvillage-like large cabins and heavy machinery, there are bits of Killearn at the moment that are not bonny. But just think forward to the end result. Judging by the pictures in the last edition of the *Courier*, the Village Hall is going to be a beauty.

It won't happen before Christmas, of course. But who knows, perhaps a dusting of seasonal snow will coat the cabins and festoon the fences, and Killearn will be beautiful once again. Have a lovely Christmas.

Joyce Begg



# XMAS

## AT THE

**4B BALFRON RD**  
**KILLEARN**  
**01360 550666**  
**OPEN 7 DAYS**



**LOADS  
OF GREAT  
IDEAS  
FOR ALL  
AGES**

# old mill gift shop





# Shop Locally This Christmas

As we approach Christmas, don't panic about all the extra running around and the time spent travelling into town in and around Killearn. Whether it's gifts, food or decorations, they are all on our doorstep. In these tough economic times, local businesses would welcome your custom. With that in mind, we have put together a tantalising collection of ideas for 1 December, 10 a.m – 1 p.m in the Church Hall for local goods and produce with a Christmas flair.

## Christmas Sparkle

It wouldn't be Christmas without candles. Try *Town & Country Design's* pierced metal votives, the copper lining creates a beautiful warm glow. Small size £10.



## Beautiful nails

'File and Gelish' for only £20. Beautiful nails for 2 weeks, no chipping or smudging! Ideal for over the festive period. Would make a perfect gift. Vouchers available from *Laura Bruce Beauty*, Main Street (above LMH) Tel 551160 or 07817 106943.

## Eating out

Can't be bothered cooking? Take up the *Old Mill Inn's* Special menu offers, it gives the cook a break at Christmas. Special 2-course lunch menu £8.95 served Monday – Friday 12 – 6 p.m and special 2 course dinner menu served 6 p.m – 9 p.m for £13.95.

## THE OLD MILL Bar & Restaurant



## Special Menu Offers

[www.old-mill-killearn.co.uk](http://www.old-mill-killearn.co.uk)  
Tel: 01360 550068  
[bookings@old-mill-killearn.co.uk](mailto:bookings@old-mill-killearn.co.uk)  
THE OLD MILL  
Proud to be your local



## Afternoon Tea... & More

*Bakers & More* in Balfron is offering a Hayloft Café Festive Special – pick any main course from the menu, plus tea or coffee and a cake of your choice for £8 per head or £15 for 2.

## Scottish farm shop produce

Christmas Baskets put together from *BenView Garden Centre's* new Farm Shop – choose from biscuits and cakes to cheeses and preserves, all Scottish sourced – gift wrapped and delivered.



## New Farmhouse Range

*Edenmill Farm Shop* has a brand new Farmhouse Range including terrines, sauces and gravies, country style puddings and cooked casseroles ready to pop in the oven. All using local produce in accordance with their 50-mile food ethos. Shop open 7 days.





# Christmas for £20 and Under

– always the downside of getting ready for Christmas. Make life easier and support our local traders by shopping local this Christmas. It's always more important to think wisely about what we are spending and where we are spending it. Our deals for £20 and under, all available locally this Christmas. Don't forget the Killearn Country Market on Saturday,



## Game Fayre

Traditional country winter food, a brace of pheasants or a joint of venison locally sourced from Duntreath Estate available at **David MacDonald Butchers**, price subject to weight.

## Dumgoyne Soap Co.

**Killearn Pharmacy** is stocking the new liquid soaps from Dumgoyne Soap Co., handmade by Peggy Brown. Normal price is £9, but the pharmacy has a special offer of 2 for £15.



## Premium wines

**Co-op's** own label premium wines offer quality wine at reasonable prices. Accompany your festive fayre with a good bottle of wine; try a French Viognier or Chilean Pinot Noir each £8.99. Full range of own label and Fair Trade wines are available from the Co-op.

## Christmas Dram

Fill up the whisky lover's stocking this Christmas with a **Glengoyne** Miniature Gift Tin. This stylish black and gold tin stores three 5cl bottles of Glengoyne Malt whisky (10, 17 and 21 year old) and contains a small distillery booklet providing further information on Glengoyne's history. £15.99 available from the distillery shop.



## Say it with . . . Hyacinths

Lots of choice – hyacinth bulbs suitable for indoors. They come with complimentary gift wrapping. A variety of colours and prices – long lasting and scented, perfect for a Christmas gift. The girls at **Endrick Blooms** wish everyone a very Happy Christmas and New Year.



## Chocolate feast

A must for Christmas – jars of Quality Street, a traditional chocolate treat to round off Christmas dinner. This attractively presented 700g jar from our local **SPAR** makes an ideal gift and is well priced at £4. Stocking filler tubes of sweets are £1 each. Look out for more confectionery deals from SPAR in the run up to Christmas.

# Christmas Baking – Stollen



image from [www.tasteofhome.com](http://www.tasteofhome.com)

Everyone makes a bit of an extra effort at Christmas, but yeasted breads can be daunting if you've never made one before. If you want a change from rich fruitcake, but still want that bit of festive luxury, try making this easy stollen – a few tricks make it super simple. This makes either one large loaf or two smaller ones. Perfect for presents.

## Ingredients

- ✂ 1 pkg Wrights Premium White Bread Mix (500g) (you can buy it locally)
- ✂ 120g softened butter
- ✂ 50g caster sugar
- ✂ 1 medium egg
- ✂ 260ml warm (hand hot) water (cooled kettle water is good)
- ✂ 50g chopped almonds
- ✂ 50g glacé cherries, washed and chopped, plus a few for decoration
- ✂ 50g chopped dried apricot (optional)
- ✂ 2 lemons, finely grated zest only
- ✂ 200g dried mixed fruit
- ✂ 50g dried mixed peel
- ✂ 2 tsp vanilla essence or extract
- ✂ 225g marzipan (optional)
- ✂ A large baking tray, greased.

## Method:

1. Combine all the fruit and nuts in a small bowl with the lemon zest and vanilla essence and set aside.
2. Put the bread mix in a larger bowl, and add the very soft butter, sugar and egg to the bread mix. Add the water and mix it well.
3. Form it into a ball and let it rest in the bowl for 5 minutes in a warm place, covered with a cloth, to allow the yeast to activate.
4. After 5 minutes, knead the dough on a lightly floured surface for a few minutes, until it is smooth and elastic. You might need to add a bit of flour if it is sticky.
5. Gradually knead in the chopped almonds, cherries, apricots (if using), grated lemon zest, mixed fruit, mixed peel and vanilla from your smaller bowl.
6. Gently roll the dough out to form a rectangle
7. Knead the marzipan until pliable. If you are making two loaves, divide the marzipan in half. Roll into a rectangle shape slightly smaller than the bread rectangle. Place the marzipan on top of the bread; roll up like a Swiss roll, pinch the seams and tuck the ends of the bread underneath the loaf to seal.
8. Place the dough, seam side down, on the greased baking sheet.
9. Let the dough rise in a warm place, covered with a damp tea towel, for 40–45 mins or until doubled in size.
10. Bake in a preheated oven at 200°C (190°C for fan ovens) for 30–35 minutes or until golden brown. You'll know it's done if you tap the bottom and it sounds hollow.
11. Cool on a rack. When the bread is still just warm, glaze and decorate.

*To decorate:* You can simply dredge your stollen with icing sugar. For something slightly different, mix some icing sugar and a little milk for a thick glaze, and decorate with glacé cherries cut in half or quarters and angelica (if you have some) to make flowers.



## Firewood for Sale

Forthvale Contractors  
Tel: 01877 387 202  
Mobile: 07890 331 702  
[drew@forthvale.co.uk](mailto:drew@forthvale.co.uk)



## The Chimney Sweep (BSIT)



- ✓ Chimneys swept
- ✓ No mess
- ✓ Problems solved
- ✓ Nests removed
- ✓ Fully trained
- ✓ Certificates issued



SOLIFTEC MEMBER  
THE SOLID FUEL TECHNOLOGY INSTITUTE

60 Kildonan Drive, Helensburgh

[www.cleanerlum.co.uk](http://www.cleanerlum.co.uk)

**CALL T: 0800 158 3818 M: 07805 453369**



## Local Development Plan

The Local Development Plan recently published by Stirling Council, which outlines proposed developments for the next 20 years throughout the Stirling Council area, is the current issue demanding attention as the *Courier* goes to print. As the plan stands at present, 50 houses are proposed for the north side of Station Road, these to be built in two phases, completion being by 2024. The Blairessan field, which featured in the Draft Plan (available for consultation last year) has disappeared from the current plan, although we understand there is still interest in this site by developers.

Work to construct old peoples' bungalows is currently progressing on the Turnip Field. The picture shows the new access road and footpath nearing completion.

KCC hosts a Special meeting on 1 November in order to allow presentations of proposals to be made and residents to state their views. It is hoped this meeting will allow all relevant information to be put in the public arena.

## Dog Fouling

Sadly it appears that there is still not enough care being taken by dog owners in clearing up after their pets. KCC has been in correspondence with Stirling Council regarding the summary serving of a fixed penalty. Whilst this was withdrawn, Stirling Council remains adamant that it is operating a policy of Zero Tolerance regarding the serving of penalties in an event of dog fouling. There will be no warnings. Signage has been put up advising the public that allowing a dog to foul any public open space is an offence. A request has been made for an additional dog litter bin to be put at the Cedar Road entry to the Glen. Stirling Council advises that any litter bin may be used for this purpose. However, it is the Council's policy to reduce the number of litter bins and it urges residents to take their litter home for disposal in the grey bin. So, dog owners, please ensure you have plastic disposal bags in your pocket when you go out, and be vigilant and clear up after your pet.

## Trees and High Hedges

Many will have noticed, and possibly regretted, the loss of the large oak tree in Birch Road. Sadly this tree was riddled with disease and presented a risk; inspection by two arboriculturalists retained by Stirling Council indicated that felling was the only solution. Our experience of storms in the past two years has shown that trees can fall and cause considerable damage. KCC has received a number of concerned enquiries regarding over-sized trees and hedges that may cause a threat or are blocking the light. Recent legislation gives Councils 'last resort' powers if a new mediation process fails, and can insist on the cutting of trees that have become excessively high. Please look critically at your own garden and ask yourself whether trees



on your land are a threat to your property or your neighbours'. What was planted a number of years ago as a neat boundary hedge may have grown into an impenetrable barrier approaching a hundred feet in height, which blocks the sunlight from several houses and gardens. If the trees are on your land, you will be responsible if, in the next

storm, they fall on your neighbour's roof. Has your hedge grown so thick that it is overhanging the pedestrian footpath, reducing the amount of walking space? If the answer is yes, please, for safety's sake, take some remedial action.

## Parking at Spar

KCC has been actively trying to encourage the management of Spar to introduce some measures that will ensure greater safety for both pedestrians and motorists. Double yellow lines have been painted by the fence on entry. Please do not park on these. Doing so impedes the ability others from entering and exiting the parking area in safety. We have asked for two disabled spaces to be marked at the gable end of the building. At present the disabled slots are not clear, but once these spaces are marked in yellow, please leave them for those with mobility difficulties. Cars should never be driven on to the pedestrian area in front of the shop, nor should they be parked against the kerb in the yellow lined space reserved for buses.

## Community Planning

Not to be confused with building planning, community planning is a term with which we shall soon become familiar. It encompasses ways in which the views of communities count for more in the delivery of strategic services by local authorities. Sounds like jargon? Perhaps it does just now, but there are changes coming which will give greater powers to Community Councils, and could enable communities to have more say in deciding what services are needed and how these should be provided. Keep your eye on the proceedings of KCC, come to meetings, keep in touch with us and let us know what your feelings are about what is happening and what would benefit Killearn

## Winter Emergency

In the event of a severe winter, Stirling Council has an emergency plan to keep things moving. The Community Council has a list of volunteers who are willing to clear roads, and equipment is stored in the village. Information will be given on the Stirling Council website and if you register with My Stirling at <http://my.stirling.gov.uk> you will get emergency information and much else for your area. For those with a smart phone, there is also an app. You can also ring the Council helpline 0845 277 7000.

Keep in touch with your Community Council by regularly checking the noticeboard outside Spar and our website: [www.killearncc.org.uk](http://www.killearncc.org.uk).

# Meet Mrs Pamela Craigie, Killearn's New Primary Head



As I walked up to the front of the primary school, which I haven't been back to since my last day of primary nearly five years ago, I was met at the door by a very professional-looking woman, the new Head Teacher of Killearn Primary School. Admitting to her that this was my first time interviewing anyone, I also discovered that this, too, was her first time being interviewed.

*HB: What is your favourite part of your job?*  
Definitely working with the children.

*What are you going to bring to your new position?*  
Enthusiasm and desire to make things better for all of the children at Killearn Primary.

*What other experience do you have at running a primary school?*

This is my first Head Teachers' post, but I have been a Depute Head within another authority for a number of years.

*What challenges do you see ahead for you?*  
The continued implementation of the Curriculum for Excellence, which offers lots of positive opportunities for the children and staff.

*What made you choose teaching as a career?*  
I have always enjoyed working with children. When you see a young child's face light up and they finally understand something, it is a wonderful feeling. I enjoy making learning fun.

*What made you choose primary school teaching as opposed to secondary school?*

I prefer working with younger children and teaching a wide range of subjects rather than concentrating on one curricular area.

*Do you have any memorable stories from your time at primary?*

There was a time in Primary 6, I remember my teacher was in a bad mood and she told me that I would amount to nothing. Since then I have been determined to do the best I can. It also made it important to me that all my pupils have the opportunity to fulfil their potential.

*Did your experience in primary school drive you to become a Head Teacher?*

Yes. It drove me to become a teacher, as I had lots of teachers that were really encouraging. I always remember Mrs Dorothy O'Brien, she was my Primary 3 teacher and again in Primary 5. She made me love coming to school, and she is the reason I am now a teacher.

*Where did you study?*

Strathclyde University, Jordanhill Campus.

*What are your thoughts on Killearn Primary and also Killearn as a community so far?*

Everyone has been very welcoming – staff, pupils and parents. It's a lovely school, and the staff have been particularly supportive of changes that have been made already.

*Do you have children of your own?*

Yes, I am married with two boys who inspire me, my eldest is eight years old and my youngest is five.

*Do you have any ideas for changes you will make to the primary school?*

It's still very early days, but I will be working with staff, pupils and parents to see how they view the future of Killearn Primary School and we will work together to move things forward. I also look to involve the local community in what goes on in the school.

*Sports and keeping active are important for children. What are your views on that?*

I really enjoy sports, so I am keen to get children involved in as many sporting activities as possible. I have introduced outdoor PE for all classes, and the children are involved with Active Stirling activities.

*Have you introduced any new sports clubs to the school?*

I have started up an after-school football club for Primary 6 and Primary 7, which the children really seem to enjoy. Mr Black, the Head Teacher at Balfron Primary, is looking to host a football tournament for all the local schools, so I have been involved with that, which should be enjoyable for the children.

*I always enjoyed lacrosse in school – is that still on going?*

Yes, it is, and the children still really enjoy it!

I thanked Mrs Craigie for her time. After speaking to her, I have no doubts that she is going to bring in young, fresh ideas that will hugely encourage the children's learning at the primary school.

*Heather Banks*

## **Killearn Primary School PTA Winter Fair Saturday 24 November in the Church Hall from 10am-1pm**

The Fair will offer fantastic gift ideas including lots of irresistible foodie stalls and oodles of festive fun for the children, including face painting, lucky dips and a tuck shop. The old favourites aren't forgotten either: a tombola and a great raffle will offer the opportunity to win one of a selection of fabulous hampers. And no fair would be complete without a tea room serving delicious home baking. So come along and support the school and the PTA.



# Hairspray

This year for the school show at Balfron High, we revived the musical Hairspray. A number pupils from Killearn are taking part and helping to create the cast for this show.

Auditions for the main cast members, including Tracy, Penny and Link, were held in June for all Fourth to Sixth Years who wanted to transform themselves into a character and take centre stage. There was so much talent that the principal roles had to be double cast. Over the summer they had the task of learning all their lines, and I can tell you there were a lot of them!

This is a whole school event, with people from all years helping out in numerous ways, including sound, lighting, costumes, make-up, hair, building stage sets, designing and painting stage sets, marketing, catering and photography. We have many choruses performing – there are the Corny Collins Show kids, the nicest kids in town and a select group of our school's best singers as the Dynamites, who will be backing up the leading vocals.

Main cast members from Killearn included: Morven Paterson, playing the role of Amber, a young girl from Baltimore who sees herself as the head of the school; Alice Copland, playing Tracy's best friend Penny, who has troubles with her mother and her religion; Rachel Maitland, Jill Barrett and myself are dancing as part of the Corny Collins Show, with many others involved in other ways. It really does show that Killearn has produced enormous amounts of talent.

It was an amazing few nights, exhausting for the cast and backstage workers. But for the audience, it was a school show that will not be forgotten!

*Heather Banks*

## JOHN CURRIE BRICK & STONEMARK TRADITIONAL SKILLS FOR YOUR HOME & GARDEN

STONE WALLING & TRADITIONAL BRICKWORK  
NATURAL INDIAN & YORK STONE PAVING  
BARN & PROPERTY RENOVATION  
BESPOKE FEATURES  
DRY STONE WALLING  
LIME MORTAR WORK & REPOINTING  
STEPS & PATHS  
COBBLES & GRANITE  
FIREPLACES  
ALL PROPERTY MAINTENANCE

CALL TODAY FOR FREE  
ADVICE & QUOTATION

Telephone 01360 550087

Mobile 07966 864811

Email [johncurrie@hotmail.com](mailto:johncurrie@hotmail.com)

www. **MacColl**  
Landscaping.com



*Rooted in Quality*

**Tel: 01360 550997**

**Mob: 07727 045939**

For further information please look at our new website



## THE OLD MILL Bar & Restaurant

- Traditional Scottish Hospitality
- Fresh Produce Sourced Locally
- Daily Specials
- Open Fire
- Festive fayre menu available from 10th to 21st December 2012. Private restaurant use available for parties of 18-28.



Proud to be your local



The Old Mill  
6 Balfron Road  
Killearn  
G63 9NJ

**Tel: 01360 550068**

[bookings@old-mill-killearn.co.uk](mailto:bookings@old-mill-killearn.co.uk)

## Caption Competition



Devise an amusing caption for this photograph captured on a rooftop in Branziert Road North.

Email your answer to:  
[courier@kcfco.co.uk](mailto:courier@kcfco.co.uk)

The winner will receive  
a £10 book token



# Being a Gamesmaker – We Helped Make It Happen!

What was it like being a volunteer at the Olympics? Three Gamesmakers from Killearn, Nick Hawkins, Sarah Whitley & Jackie Hawkins, recounted the highs and lows of their involvement in London 2012 to the Courier.

*Question: What was your job?*

**Nick Hawkins:** Transport team.

**Sarah Whitley:** T3 driver. Glorified taxi, but in a posh car.

**Jackie Hawkins:** Transport team.

*Q: Where were you based?*

**NH:** Horse Guards Parade – next to Downing Street.

**SW:** At Park Lane Fleet Depot – the Marriott Hotel Grosvenor Square.

**JH:** Park Lane – Intercontinental and Hilton Hotels.

*Q: Was that a sporting venue?*

**NH:** Beach Volley Ball – a tough gig – but someone had to do it!

**SW:** I saw some sporting venues, but only the car parks!

**JH:** No, the Presidents of each country's Olympic organisation and officials were staying in these hotels.



*Q: What did you have to do?*

**NH:** Direct buses with athletes, media, VIPs etc, on Whitehall.

**SW:** Provide an 'On Demand' car service for athletes, officials and members of the 'Olympic family'.

**JH:** Match up the VIPs with their allocated drivers and personal BMWs.

*Q: Was it fun?*

**NH:** There was a lot of hanging around – but I spent most of my time being an unofficial tourist information point – which was great!

**SW:** A lot of hanging around, but I had a nice comfy BMW to do it in! All the other drivers were great company, too.

**JH:** The whole thing was a fantastic experience – meeting officials from all over the world, chatting with other Gamesmakers, G4S workers and police all stationed at the hotel.



*Q: What was the best bit?*

**NH:** Being told by visitors that the Gamesmakers were 'brilliant'.

**SW:** The whole atmosphere. I've never seen London so relaxed and friendly; and the man who crossed the road just to tell me what an amazing job the Gamesmakers were doing made me cry!

**JH:** Being in Central London next to Hyde Park where so much action was taking place. I could hear the concerts in Hyde Park and see the Olympians competing in the Ladies Road Race from my post.

*Q: What was the worst bit?*

**NH:** The end.

**SW:** The dreaded words 'Go and stage in Curzon Street' which meant get on the end of an incredibly long line of cars near the main hotels to wait for my next passenger!

**JH:** Missing out on some of the action while I was on duty.

*Q: What did you think of the 'purple ant' uniform?*

**NH:** It is difficult to design something that is practical for all shapes and sizes – and at least it was distinctive! People would just start talking to you on the London Underground – that never happens normally!

**SW:** Bizarrely, I got quite fond of it. It certainly encouraged people to speak to you and earned the odd discount in shops and restaurants! The worst thing was the fabric; it was like wearing a portable sauna on the hottest days. The only breathable bit was the trainers!

**JH:** Not my colour at all, but very comfortable. It was quite embarrassing at first, but once the public started to recognise it, I felt quite proud to be stopped and asked for information or advice. It gave us a licence to chat with everyone.







*Q: Did you meet anyone famous?*

**NH:** I saw Prince Harry and lots of politicians, including Boris Johnson and President Putin!

**SW:** Only a cardboard cut out of Seb Coe, but Eddie Izzard sent me lots of emails! (OK, and all the other Gamesmakers, too...)

**JH:** I met Sebastian Coe – he was very friendly, and chatted to Gamesmakers as he was going in and out of the hotels.



Jackie Hawkins

*Q: What was your favourite venue? What was it like?*

**NH:** Horse Guards Parade was amazing – a 15,000-seat temporary arena – the size of Wimbledon Centre Court – with a brilliant party atmosphere.

**SW:** Greenwich Park was beautiful. Even parking there was nice as you could leave the car and go for a wander round the site – as long as you had your radio. The views across London were spectacular.

**JH:** The Velodrome was awe inspiring. As I went into the arena the hairs rose on the back of my neck. The roar of the crowd as the British cyclists came round our side of the track was just magical.

*Q: Did you meet any athletes?*

**NH:** Lots of extremely tall Beach Volley Ball players!

**SW:** A Russian cyclist on her way to Heathrow after being chucked out for failing a dope test – shhh!

**JH:** Frankie Fredericks – the former champion sprinter from Namibia.

*Q: What was the strangest thing you saw?*

**NH:** Crowds six deep outside Buckingham Palace going wild for the 20k Walk (the most ridiculous sport ever! Along with Synchronised Swimming, of course).

**SW:** Not very Olympic, but I met four naked men in the lovely village where we used to live, very early on a beautiful sunny morning! Three dived for cover behind the pub, one was far too proud of himself to hide! I wished him a very good morning!

**JH:** Group discussion on the buses and tubes. And a Japanese family clad head to foot in Team GB merchandise!

*Q: What was London like at the time of the Games?*

**NH:** Absolutely wonderful. Secure, friendly, the transport worked and the buildings are incredible.

**SW:** Fabulous, I loved seeing Oxford Street deserted at 5.30 a.m. (I am instigating Olympic lanes in Killlearn) and driving past Buckingham Palace and round Parliament Square was pure magic – especially when no other cars were allowed to!

**JH:** It felt very safe, clean and efficient. It was the first time that I had spent much time in London and I loved it.

*Q: Who were your heroes?*

**NH:** The street cleaners working through the night.

**SW:** The army at the Vehicle Security

checkpoints. They were great – professional, but friendly and really chatty.

**JH:** The London residents who all made all of us visitors so welcome.

*Q: What was your favourite moment of London 2012?*

**NH:** I don't know – too many to mention... probably the Golden Hour of Jess, Greg and Mo on *Super Saturday*. Incredible... What was yours?

**SW:** One that stands out was meeting Tom Daly's publicity crew – my Facebook friends have seen the photos!

**JH:** The Medal Ceremony in the Velodrome – and loads more.

*Q: Do you have a special souvenir?*

**NH:** A few photos and lots of fond memories.

**SW:** Sadly not the BMW. Lots of pin badges, one from a member of the IOC which is just the Olympic rings and very smart.

**JH:** We were all presented with a replica Relay Baton as a souvenir of our involvement.

*Q: What are your hopes for the future?*

**NH:** That the Union Flag has been reclaimed for all the UK.

**SW:** That the Games are as inspirational as they set out to be.

**JH:** That everyone continues to be proud of being British and goes out and does exercise.



*Q: Will you volunteer for the Glasgow 2014 Commonwealth Games?*

**NH:** Most definitely, and I'd urge everyone else to do the same. Get involved – you won't regret it!

**SW:** Been on the mailing list for months! I keep telling everyone to volunteer – and then kicking myself for reducing my chances of getting picked!

**JH:** I would love to. It was a great experience that I would love to repeat.

# Another Busy Year for the Rotary Club of Strathendrick

Saturday, 11 August saw the Rotary Club of Strathendrick holding their 15th annual Am-Am Golf Tournament at the Shian Golf Club, Balfroun. This popular event has become Rotary's main fundraising event of the year, and it alone has raised over £100,000, all donated to charity, since it first started.



Together with other events, including the Classic Car Tour in April, a Duck Race held in conjunction with the Fintry Fling, and a Bridge Evening, this enabled Strathendrick Rotary Club to distribute over £15,000 to charity during the year ending 30 June. President Pamela Maxwell is confident that that figure will be exceeded in 2012-13.

The money raised is distributed between charities of all types. Last year Rotary supported:

*International:* Water Aid, Shelter Box, East Africa Crisis Relief, End Polio Now.

*National:* CHAS (Children's Hospice), Bobath (Scotland), Mary's Meals, Combat Stress, Beatson Institute for Cancer Research.

*Local:* Strathcarron Hospice, Crossroads, Abbeyfield, Strathblane and Strathendrick Welfare Fund.

Perhaps even more important, but less heralded, is the financial support that Rotary has been able to give to young people who are showing initiative and enterprise and broadening their outlook on life. Recent donations have enabled individuals from this area to teach English in a school in rural China, work in a special-needs school in Fiji, teach English in a remote area of Southern India, work in

an outdoor centre in Malaysia and work with disabled children in New York.

Each year, the Club sponsors a pupil from Balfroun High School to go to the European Parliament in Strasbourg for a week (Euro scholar). Next year, Rotary will also support 16 pupils from Balfroun who are going to the Himalayas to help locals grow their own food.

The Club is also very much involved with local communities, supporting various groups and organisations including – in the last few months – donations to Drymen Guides, helping them to get established; Ballinrain School to maintain their cycle track; shirts for a junior rugby team; and Strathblane Primary School Pop Lacrosse team to attend the British Championships in London in June.

But Rotary is not just about fundraising and donating money. Each year the Club organises a Primary School Quiz, with a competition enthusiastically entered by almost every primary school in the area, the winner progressing to a District Final. It built, and will reinstall, the cairn at top of Dumgoyne which details all the sights on the distant skyline; and it plans to establish a Patient Transport Service for the area in conjunction with the local health centres.

Rotary is pleased to work closely with local communities and organisations, and tries to live up to the Rotary motto 'Service Above Self'. Anyone wishing to learn more about Rotary or its activities will be welcome at one of the weekly meetings – 6.30 for 7.00pm at the Black Bull, Killearn. For further information, please contact:

Rotarian Allan Watson (860326)  
or email [a.n.watson@btinternet.co](mailto:a.n.watson@btinternet.co).

---

## The Evenings are Fair Drawin' In

One can't help but notice, rather depressingly, that the evenings are now getting darker and it will shortly be late afternoon when darkness falls. This is a time when everyone needs to be vigilant against break-ins and prepare their house to look less attractive for the opportunist thief looking for an easy target.

So, how do you do that?

Take a walk down any street during the late afternoon just as it's getting dark and it will quickly become obvious which house is occupied and which is not. Are the curtains drawn with the lights on inside? Is there a car at the door? Are there signs that someone is home? If the answer is yes, then the housebreaker will likely move on to an easier target.

Houses where the curtains are wide open, the whole house is in darkness and no car is in the drive then become attractive and more likely to be subject to a break-in.

Secure the house: security lighting outside; lights on timers inside. Angle blinds so that passers-by can't see in; leave a radio on playing a talk programme. These are some steps that can easily and inexpensively be taken. Also, consider trimming back hedges and bushes to keep hiding-places to a minimum. Don't leave garages open, or ladders and tools lying around.

Look after your neighbours – have some thought for the houses around you and look out for any suspicious activity, persons or vehicles. Last November we apprehended a bogus workman targeting elderly residents in the village purely because neighbours reported their suspicions promptly.

If you are suspicious about callers, cars or vans in the street, then let the police know immediately. We would rather respond to a 'false alarm with good intent' than have to deal with a break-in and the misery it causes.

There are several reasons why this time of year is more attractive. One, as I've mentioned, is the early cover of darkness. Another is that, in the lead-up to Christmas, it is fair to say that most households will have a collection of gifts beginning to accumulate. Thirdly, the thieves themselves need to finance their own festive period and will always be on the lookout for maximum gain for minimum work.

By taking a few simple precautions you will not become a victim to this type of crime.

All that remains to be said is to have a safe and happy Christmas (when it comes) and don't overdo the sherry if you're planning to drive.

*Best Regards, PC David McNally*



# Dumgoyne Rural



The final meeting of Dumgoyne SWRI was held on 17 September, with a buffet supplied by Doyles, and a very pleasant evening was had by all.

The Rural archive was displayed and many names were put to faces. Each member was presented with a commemorative mug. The All Killearn Archive are having the photos, cutting and old syllabi, and some of the silverware has been gifted to village organisations such as the Horticultural Society and Embroiderer's Guild so that it remains in the village.

The 'Rural' was founded in 1924, so its had a good run. The membership intend to try and meet up at regular intervals, and extend an invitation to other interested women, to just have a chat so that different ages and ladies who may not meet in their everyday lives have a chance to get to know each other.

Thank you to all the members, past and present, who have supported the Rural.

*Sara Hudson*



At The Ward Toll  
Balfroun Station, G63 0QZ  
4 miles south of  
Aberfoyle on the A81

 Follow us on facebook

*Garden Centre Pet Supplies*  
*Orchid House Farm Shop*

Farm Shop now stocking meat, cheese, fruit and veg, preserves (honey, jam, chutney), biscuits, etc.

- Christmas trees, wreath rings, holly balls
- Firewood, peat and coal
- Food and care items for small animals
- Craft Fairs 27th October and 24th November (including free winter warmer drink)

**All your gardening needs catered for**

**Free Expert Gardening Advice**

**Opening Times:**

Monday - Saturday: 9.30 am - 4.30 pm, Sunday: 11.00 am - 4.30 pm  
info@benviewgardencentre.co.uk tel: 01360 850525

## TOWN & COUNTRY DESIGNS & COFFEE SHOP

INTERIOR ACCESSORIES GIFTS  
CARDS GIFT WRAP CANDLES  
& HOMEBAKING

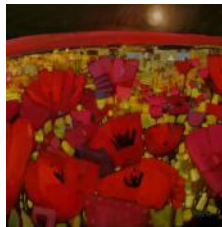


Come and enjoy a coffee and a slice of  
homemade cake and have a browse  
at our fabulous selection of  
Interior Accessories & Gifts for Christmas

16 BALFRON ROAD, KILLEARN, G63 9NJ.  
TEL. 01360 550830 OPEN 7 DAYS

## FETCH AND FRAME

EXPERT PICTURE FRAMER AND ART GALLERY  
ESTABLISHED 25 YEARS



Framed limited edition signed giclee print by Gordon Wilson of the iconic 'Akannajinja' available now.

Exhibition of new paintings by

## GORDON WILSON

23rd NOVEMBER TO 24th DECEMBER 2012

Call in for a friendly, helpful, professional service.

For all your Christmas framing requirements!

We are open Tuesday to Saturday  
7.30am to 5pm ( 3.30pm Saturday )

64 Clober Road Milngavie Glasgow G627SR

0141 956 4414

fetchandframe@btinternet.com

MEMBER OF THE FINE ART TRADE GUILD

[www.gordonwilsonart.com](http://www.gordonwilsonart.com)

# Killlearn Football Club

Despite losing almost all of the successful side of the last decade for various different reasons, the club managed to fulfil their Forth & Endrick League fixtures for season 2012 and finished mid table.

The team played a total of 23 matches; winning 9; drawing 4; losing 10; scoring 45 goals and conceding 42. The highlight of the season was the defeat of close rivals Balfron Rovers 3-1 in Round 2 of the Cameron Cup to reach the semi-final. The lack of experience in the side was evident in the attempt to reach the final, losing 2-0 to a much wiser and stronger Gartocharn team.

Most of the KFC team were having their first taste of Forth & Endrick football during the 2012 season, and it is hoped that some will have learned that the league is not about nice World Cup touches but more about effort, and trying a wee bit harder than your opponents do! The lack of aggression at times was noted by match officials, who only awarded 15 yellow cards to Killlearn players during the entire season, resulting in the club being awarded the Garvie Cup for the best

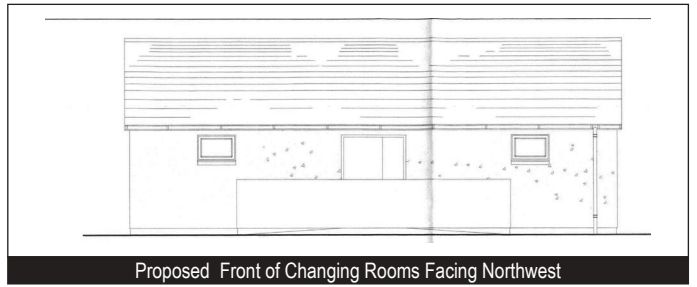
disciplined side in the league.

Off the park, the club staged a very successful golf outing to Aberfoyle where 22 members competed for the Colin Murray Cup, won by Joe McLaren, just ahead of joint runners-up, Paul Carey and Robert Phillips.

The club would like to thank all the loyal supporters who came along to give the team encouragement during the season, and to the committee of the Church Hall for providing changing premises for the home fixtures.

The club has recently lodged a planning application with Stirling Council for dressing rooms at the park and, in the hope that this will get the go-ahead, have started a 21 Goal Sweep to raise funds, which are necessary when applying for grants towards the cost of the building. Anyone interested in contributing to this fundraiser can get further details from any committee member.

Proposed Front of Changing Rooms Facing Northwest



## HANDY ANDY

SMALL JOBS, GARDEN & PROPERTY MAINTENANCE

Examples of jobs done

<p><u>Interior</u></p> <ul style="list-style-type: none"> <li>• Decorating</li> <li>• Assembling Flat Pack Furniture</li> <li>• General woodwork</li> <li>• Kitchen fitting</li> <li>• Basic Plumbing &amp; Electrics</li> <li>• Bathroom Suites</li> </ul>	<p><u>Exterior</u></p> <ul style="list-style-type: none"> <li>• Gutter cleaning &amp; repair</li> <li>• Garden tidying</li> <li>• Painting</li> <li>• Fencing</li> <li>• Sheds</li> <li>• Decking</li> <li>• Pressure washing</li> </ul>
-------------------------------------------------------------------------------------------------------------------------------------------------------------------------------------------------------------------------------------------------------------	------------------------------------------------------------------------------------------------------------------------------------------------------------------------------------------------------------------------------------------

(This list is not exhaustive, if you do not see your job listed just phone.)

**Call 01360 551100  
or 07748754583**



## ‘Best Whisky Tour in Scotland’

The Sunday Times

**Open 7 Days**  
 March - November 10am - 5pm  
 December - February 10am - 4pm

**Direct Bus Service**  
 No. 10 bus from Buchanan Bus Station in Glasgow stops at the gates of Glengoyne Distillery.

**40 Minutes Drive (approx)**  
 from Glasgow and Stirling.

[www.glengoyne.com](http://www.glengoyne.com)

Whisky Tasting  
 Blend Your Own Whisky Tours  
 Superb Whisky Shop

Glengoyne Distillery, Dumgoyne,  
 by Killlearn, Glasgow G63 9LB  
 T: 01360 550254 F: 01360 550094  
 E: [reception@glengoyne.com](mailto:reception@glengoyne.com)



Distilled more *slowly* for the highest quality – THE REAL TASTE OF MALT.



# Tennis Club at the Country Market



The Country Market is held on the first Saturday of the month in Killearn Kirk Hall, and the Tennis Club is now organising refreshments. Tea, coffee, juice and home baking are on sale for a flat rate of £2.50 (adults) and £1.50 (children).

The Tennis Club has had a successful season with well-attended club sessions and popular open days. Its members range from pre-schoolers to the over-80s.

The picture (*left*) shows, Alice Russell and Jim McLelland, the winners of the Veterans Doubles Championship.

Out of school time, the courts have been well used by budding Andy Murrays

and Laura Robsons, who often also attend the junior coaching sessions. However, the Tennis Club also faces challenges. Unlike other clubs in the region, it has to pay substantial rental charges, currently over £6,000 a year. This does not include insurance, maintenance, equipment and all other standard expenses. So fundraising is a constant imperative.

The Tennis Club hopes that as many people as possible will support their new venture at the Country Market – and perhaps use the opportunity to find out more about the club and try tennis for themselves.

*C.J. Howe*

## Rugby Round-Up: good news, great news and sad news

This season Strathendrick Rugby Club and Balfron High School are collaborating, running Midi Rugby teams at both S1/2 and S3/4 age groups. The teams have enjoyed good games against the High School of Glasgow B teams and Lenzie Academy so far – with more fixtures to come.

The good news is that – with generous support from sponsors and the Rugby Club – smart, new playing strips have been designed combining the blue and white hoops of Strathendrick with a green band from the School colours. Our pictures show Pamela Maxwell, President of the Rotary Club of Strathendrick, presenting the Balfron Endrick Under-14s with their new shirts, together with Jamie Millar, Club President, Mr Macquarrie of Balfron High School and Mark Gibson of Edenmill Catering, presenting the Balfron Endrick Under-16s with their new shirts.

In other age groups, the Strathendrick Minis are enjoying a busy programme of fixtures, training and visits to internationals. And the great news is that Mini Convenor – of 13 years standing! – Iain Somerville has been presented with a Stirling Provost's Award (*see page 2*) and he has been nominated for an Active Stirling Sports Award – go Iain!

And the sad news is the untimely death of Clive Emmanuel, marked elsewhere in this edition. Clive was a past president of Strathendrick, he led the Club's first, legendary, international tour to the U.S. in 1992 and has been a loyal supporter of the Fintry Club ever since. Six Nations Saturdays in The Old Mill – especially games involving Wales – will never be quite the same again.

Your club mates miss you, Clive.



For more information about Strathendrick Rugby Club, visit [www.pitchero.com/clubs/strathendrickrfc/](http://www.pitchero.com/clubs/strathendrickrfc/)

# Curling – First Stones

The new curling season for Strathendrick Curling Club got underway in September for both the main club and the Ladies Section.

Unusually, the main club started their season with the Pairs competition. This was won by Donnie Macdonald and John O'Neill with 7 ends. They will be able to take home one of our oldest and probably nicest trophy in the form of two silver curling stone handles. In second place were Sheila Sturrock and Rita Harris with 6 ends and plus 6 shots.

Next up was the traditional President v Vice President bonspiel. This year there was a win for President George Harris by 11 points to 10 (*pictured right*). This was mainly due to the efforts of Fiona Glass' team who won 5 out of 7 ends played. The other two teams did not do so well! The bonspiel was followed by a buffet at the President's house.

We are having difficulty in persuading members to commit to playing in a team over a three-month period so this year we only have a six team league before and after Christmas.

The Ladies Section held a practice session before the season started, for everyone to get used to being on the ice again. This was much appreciated by those who were able to attend.

The Ladies Section played their Opening Bonspiel at The Peak. It was won easily by Muriel Holroyd's team of Rita Mearns, Elspeth Murdoch and Norma Mitchell with 5 ends. The other three teams all tied on 3 ends each. Second by virtue of being level on shots were Helen Watson, Lorna Craigie, Rita Hallam and Marion Richardson.

The Ladies are playing a five-team league on Thursday mornings up to Christmas and a four-team double round robin after Christmas. We have two new members from Blanefield this year and would welcome more.

The club will be involved in the usual Province games against other local clubs, but there are no special events this year. Some of our members will be representing the Province in November in a Royal Caledonian Curling Club competition called the Waldie Griffith, in which we play teams from another Province (this year, Lanarkshire). Most Provinces just ask four of their curling clubs to provide teams for this, but Forth & Endrick prefer to select 16 players and mix everyone up. This makes for a very enjoyable and different event.

Those of you who attended the Flower Festival in the Kirk at the



end of August will have seen the Province trophy, the Gordon Mitchell Rosebowl – (*pictured left*). This trophy was presented by one of the most influential members in the history of Strathendrick C.C., the Rev. Dr Alexander Gordon Mitchell, to mark the centenary of the Royal Caledonian Curling Club. He was made chaplain to the club in 1898 when

he became minister at Killearn Church, and Secretary/Treasurer from 1899–1938. Nearly 40 years! He was also chaplain to the Forth & Endrick Province and the Royal Caledonian Curling Club.

Dr Mitchell was a well known raconteur, enjoyed a few drams, was a very keen curler, and even wrote poems and curling songs: altogether, a great 'character' of his time. (Don't know when he had time to write his sermons!)



We have had a rather an unfortunate time with our social events this summer. Donnie and Mary Macdonald hosted a barbecue at their house near Gartocharn in early August. This was enjoyed greatly despite the continuous rain!

At the end of August, we had our annual Texas scramble and general knowledge quiz at Buchanan Castle Golf Club. The weather was so bad that only two out of the four teams actually participated in the golf. The winners were Fiona Glass, Norman Robertson, Dennis Pattenden and Di Jackson. Fortunately, more people turned up for the supper and quiz, in which Norman and Di had a double success along with Stephen Holden, Rosalind Macgowan and Matt Gingles. The winners did know that Scotland were the current women's European curling champions, unlike some of the teams!

Some of our Ladies Section were guests at the West Stirlingshire Ladies Curling Club outing at Ross Priory. This time the rain kept off until after the outdoor activities had taken place and we were inside having lunch.

We really would like to recruit some new members to the club to keep the competitions competitive. The club is very friendly and sociable, and please do not be put off by the expert play that you see in the Olympics – we can rarely produce shots like that! It's also much better exercise than you expect and certainly makes sure the winter passes quickly.

If you would like to have a go at curling contact:

Fiona Glass (550646) or George Harris (550456)  
or look at our website:

[www.strathendrickcurling.org.uk](http://www.strathendrickcurling.org.uk)



## Olive McGowan 1930–2012



Olive McGowan, the youngest of four children of Thomas and Rachel Bell, was born in Glasgow and educated at Notre Dame School. She qualified as a Nursery Nurse Assistant and worked in Glasgow, but moved with her family to Strathblane, where, at dances in Blanefield, she met John McGowan. They were married in 1956 and made the Mill House their home. Iain, their son was born, and Olive devoted herself to homemaking and to supporting her husband in his timber business.

Energetic and outgoing, Olive worked for some time in local businesses. She worked at Gazebo, Ballat, before becoming a guide at Glengoyne Distillery. She also involved herself in a wide range of community activities. She was a past President and Secretary of the Monday Club, a member of the Strathendrick Golf Club, Strathendrick Curling Club and the Blanefield Tennis Club; she played bridge and badminton, and took part in local amateur dramatics. In a voluntary capacity she helped with the Thursday Club, the WRVS Meals on Wheels, and The Boys Brigade and Rotary Club fund-raising ventures.

She will be remembered by many as a popular member of the community and often the life and soul of many social occasions. Her strength of character helped her to cope for many years with her diabetes and gradually failing health, supported by the love of her husband, John, who died last year and by her son, Iain, of whom she was so proud.

BP

## Clive Robert Emmanuel 1947 – 2012



Clive, a Swansea boy, left school at 16 to work as an assistant cost accountant at Steel Company of Wales, Ltd. Through day release, he achieved Ordinary and Higher National Certificate qualifications sufficient to allow him onto an economics degree course at University of Wales Institute of Science and Technology, Cardiff, as a mature student (aged 21!). He then moved to Lancaster University to a taught Master's course, followed by a PhD. He was a lecturer at Lancaster and a Reader at Aberystwyth, before achieving professorial status at Glasgow University in 1987. Clive was not only a respected professor and active researcher, publishing many papers, but he was also a model for other researchers. *Accounting for Management Control* (Emmanuel, Otley and Merchant) is a core textbook still used today. Clive's achievements were formerly recognised in April 2012 when he was awarded The Lifetime Achievement Award by the British Accounting and Finance Association (BAFA).

In the early 1990s, Clive was one of a team who, under a Foreign Office initiative, made several visits to Russia, to help Russian academics create new Russian accounting rules to match western standards. His

enthusiasm and willingness to contribute both academically and socially made him a very popular visitor there, especially once the interpreters had penetrated his accent!

Clive was quite a sportsman, enjoying tennis and hill walking. But Clive's main sporting interest was rugby. Clive first got involved with Strathendrick Rugby Club soon after he moved to Killearn. As a proud Welshman, he was highly knowledgeable about the sport. He applied his skills as Club Coach in the early '90s, and served as Club President between 1991 and 1993, helping to put the Fintry club on a sound footing and encouraging the development of Mini Rugby. Clive used his international connections to organise and manage Strathendrick's first full foreign tour, to the United States, in 1992. That character-forming event was the experience of a lifetime for many players, and is still rhapsodised about to this day. Since then, Clive has been a Club stalwart, attending many games and social events.

Clive was a family man, enjoying life with his wife Gill and their three children, Rhian, Owain and Bethan, and his new little granddaughter, Effie. He was also a village man, involved in Killearn Community Futures. He will be greatly missed. JB

### Jamie Pearson Independent Funeral Directors

Fintry Manse      2 Service Street      54 Cowgate  
Fintry              Lennoxtown              Kirkintilloch

01360 860 345

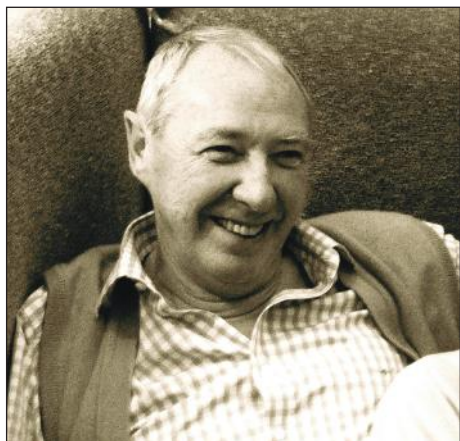
Funeral Plans • Monumental Masonry  
Wills • Power of Attorney • Estate Planning



Woodland Burial at Killearn

Golden Charter  
Funeral Plans

## James Kennedy 1939 – 2012



James Adam Kennedy, or Jim as he was known to all in Killearn, was born in Kirkintilloch and educated at Kelvinside Academy where he was School Captain. At school, he headed the naval

section of the Cadet Corps and this led to him joining the Royal Naval Volunteer Reserve, where he was one of the last reservists to gain a commission, prior to completing National Service in the Royal Navy. His commitment to the Royal Naval Reserves continued throughout his life and, in 1972, he was promoted Lieutenant Commander. He earned the reputation of being a great leader, highly organised, and having a good rapport with both officers and ratings.

Finishing National Service, he opted to join the family business, The Scottish Wire Ropes Company. Here he developed his career and in an amalgamation with another wire rope company, Martin Black, he became Managing Director.

He married Madge in 1964 and they set up home in the West End of Glasgow. After the birth of twin daughters, they moved to Killearn, where his grandparents had lived previously. The arrival of a third daughter completed the

family. Jim was a devoted husband and father and, in time, a proud and affectionate grandfather.

He continued to promote the wire rope industry through challenging times for many years, but in 1987 became a commuter to London, where he led the merger of two legal firms, creating Beechcroft Stanley which he managed successfully for ten years. In later years he joined his son-in-law in Domino's Pizza as bookkeeper, company secretary and advisor.

He had a long and faithful connection with Killearn Kirk, where he was appointed an elder in 1972 and gave great service in the management of finances, in particular, the Gift Aid scheme.

Outdoor life and sports were an abiding enthusiasm for him. As well as sailing, he played golf, being a member of Glasgow Golf Club for over 40 years and a past captain of Buchanan Castle Golf Club, where he was instrumental in setting up the new Academy course to encourage juniors. Hill walking, shooting, stalking and, latterly, fishing, all enjoyed in the company of his many friends, gave him huge pleasure.

He was a big man in many senses. Physically tall and strong, he was always a notable figure, with a slightly flamboyant style – sideburns and colourful trousers were a trademark – he was loyal and supportive to friends and colleagues; courteous and companionable in social situations; he was endowed with that wisdom that ensured, when he spoke, his judgement could be trusted. He approached his illness with a courage that was an inspiration to others. He will be greatly missed by all who knew him. *BP*

---

## Tom Cochrane 1922 – 2012

Tom Cochrane was born in Korea and spent his early years in the Far East, where his father was a marine engineer. Returning as a young child with his mother to the family roots in Clydebank, he travelled via the Trans-Siberian Railway. He was educated at Allen Glen's School, where he excelled academically and in sport, being dux of the school and captain of rugby and cricket. He served as an officer in the Corps of Royal Electrical and Mechanical Engineers during World War II, working on tanks and bailey bridges. After the war he graduated from Glasgow University in Mechanical Engineering and spent his working life with ICI, initially at their Ardeer plant.

He met his wife, Jean, in Largs where they settled for some years before his career took him to Dumfries, Harrogate, Carrickfergus and back to Harrogate. Two daughters and a son were born to a family which maintained affectionate bonds with their wider family, and deep and lasting relationships with the host of friends they made throughout their many moves.

Of key importance in Tom's life, after his family and friends and his work, was golf. He held a single figure handicap for over 50 years and represented the army, district and county sides and the many clubs of which he was a member.

In a long retirement, the last thirteen years of which were spent in Killearn, Tom was able to enjoy travel to many far-flung places with Jean.



Their marriage, lasting over sixty years, was blessed with nine grandchildren and three great grandchildren.

*BP*



## Marla Stewart Fraser Drummond (née Sinclair) 1928 – 2012



Born in Glasgow, Marla was the elder daughter of a bank manager whose career took him around Central Scotland. As a result Marla attended schools in Alloa and Paisley as well as in Glasgow.

She trained at the School of Architecture at the Glasgow College of Technology, where she met Ian, also an architectural student,

on his return from service in the Royal Navy. They were married in 1952 and set up home initially in Glasgow's West End.

They then lived in Pollokshields for over thirty years. Marla took time out from looking after her four children to participate in local church dramatic productions, starring on one occasion as a nun.

She returned to work at the Mackintosh School at the Glasgow School of Art as a lecturer and professional practice supervisor of architectural students on work placements, a role she greatly enjoyed and for which she was well suited.

Marla and Ian moved to Killearn in 1986, and quickly became absorbed in village life. Among other activities, Marla helped at the Thursday Club, collected for Poppy Scotland, and was a keen supporter of the Colourful Killearn initiative.

Building on her skills for beautiful tapestry and cross-stitch work, she took up craft classes. She and Ian enjoyed gardening and the fellowship of the local walking group, as well as the friendship of many local residents.

She also learned to use a computer, helping her to keep in touch with her sister Jeanette in Australia – they had a long conversation on Skype the day before Marla died.

She was a wonderful granny to her 10 grandchildren: Fraser, Lauren and Seonaid (Melbourne), Christie, Angus and Lucy (Killearn), Rebecca and Megan (Glasgow), and Verity and Daisy (Edinburgh).

As Marla's health deteriorated and she had to give up driving, she and Ian were reluctantly persuaded to move in March this year to a more easily-managed flat in Renfrew. She died suddenly, but peacefully, on August 14.

## Sad Loss of Oak Tree



During an October week, the residents of Birch Road prepared to bid farewell to their beloved oak tree. Sadly, disease has overtaken the tree, and for safety reasons it needed to be removed.

Since the completion of the houses in 1975, this beautiful tree dominated the landscape of the street. We may have grumbled in autumn when the fallen leaves required clearing, but we rejoiced when the green shoots appeared in spring.

Children practiced their climbing skills and sometimes discovered that going up was easier than coming down. More than one dad was witnessed employing a ladder to rescue his offspring. One resident remarked that a small consolation would be that the congregation of crows would no longer disturb our peace at teatime.

So farewell, Oak Tree – you have served us well.

*Doreen Snadden*



Photographs courtesy of Brian Valentine



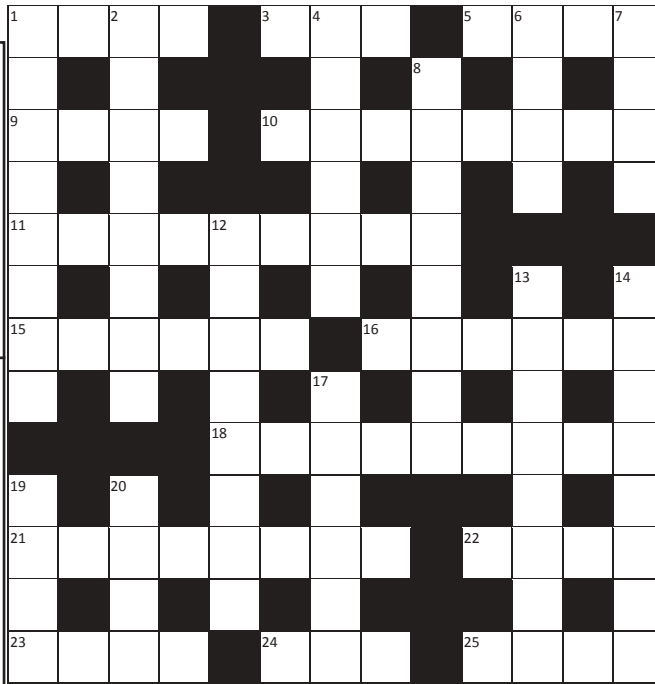
Solve the crossword, fill in your name and address, and place it in the box in Spar.

The first correct entry to the crossword drawn out of the box after the closing date will win a Family Ticket to Theatre Royal or The King's Theatre, Glasgow, subject to availability and restrictions on certain days.

**Welcome to King's Theatre and Theatre Royal, Glasgow**

The King's Theatre and the Theatre Royal are Scotland's leading live entertainment venues, showcasing the best West End and touring productions in the UK each and every year.

telephone: 0844 871 7627.  
ambassadortickets.com/glasgow



**ACROSS**

1. Perhaps Usain Bolt starts initially to drink in these. (4)
3. A period when beer loses both ends. (3)
5. Annoying beastie in malign attitude. (4)
9. At the top of the tree. (4)
10. I hear the bird devoured a flirt. (8)
11. It stole me a kiss under it. (9)
15. A monarch puts good into controllers while on the throne. (6)
16. I could be a clue to this part of a flight. (6)
18. You can eat these cockney peepers. (5,4)
21. Shoot the team in a warm place. (8)
22. Put your name to this direction board. (4)
23. South American city takes time to cause a violent disturbance. (4)
24. Money can't begin to leave this residue. (3)
25. Mixed up – yes, a young hawk. (4)

**Solution to the last crossword** Across: 5 Streetcar; 9 Sunshine; 10,8 Flower Show; 11 Adder; 13 Groyne; 15 Banker; 16 Skirmish; 18 Lock; 19 Distracts. Down: 1 Stowaway; 2 Geyser; 3 Stunts; 4 Cash; 6 Sheldrake; 7 Inference; 12 Monolith; 14 Evicts; 17 Rain.

**DOWN**

1. A spot under support cancels stamp. (8)
2. Soldier's hat sounds rather cold. (8)
4. Santa's hideaway. (6)
6. Crazy for Christmas fare. (4)
7. In the centre enjoy this at Christmas. (4)
8. I hear you'll be bound at this season. (8)
12. Continent is ground on a service. (8)
13. Is it vanity for children to act in this? (8)
14. Now's the time to give these. (8)
17. Positive plates back flower in water. (6)
19. Back to airmen a long way off. (4)
20. Three players around 23ac. (4)

Name .....

Address .....

.....

Phone .....

**Congratulations to the winner of our last crossword: Alice Russell, Killlearn**

**CHILDREN'S SPOT THE DIFFERENCE sponsored by SPAR**

*The first correct entry pulled out of the box will win a £10 voucher which may be spent on anything in your local SPAR.*

*Find 10 differences in the picture on the right and ring them. Write your name, address and age below, cut out the pictures and place in the box in Spar to win a £10 voucher. To enter the competition you must be 12 years or under.*



Name ..... Age .....

Address ..... Phone No. ....

**Congratulations to the winner of the £10 Spar voucher in our last competition: Eilidh MacLean age 10**  
**Closing Date for both competitions – 5 January 2013. Please place your entries in the box in Spar.**



# Going Underground

Writing this, I am counting down the days to my own autumn migration – my annual pilgrimage to Shetland. Every year I take a week or two out of everyday life and travel to these islands in search of rare birds and great adventure.

As I head north, I pass birds moving south to share the Killearn area with us – geese in their hundreds and thousands, fieldfares and redwings from Iceland and Scandinavia, and commoner birds crossing the North Sea to boost our resident populations. Whilst they arrive on our shores, other birds depart to Europe and Africa: our swallows, martins, warblers and the like all making perilous journeys to warmer climes.

That's fine if you can fly, if you can escape one geographical zone for the more favourable conditions of another. But what about those that are left behind?

Living close to Killearn is one very special animal which cannot survive the winter cold without doing a different kind of disappearing act: the adder. Our only venomous snake, indeed our only snake in Scotland, the adder inhabits dry moorland and heathland. Your best chances of seeing them are in spring and autumn. On warmer days they bask

on sun-trapping 'adder banks', the black-and-grey males and the larger, dark brown females showing off their famous zig-zag markings.

But to escape the winter cold, adders are forced to hibernate between November and February. They generally do so by occupying a communal underground 'hibernaculum' which tends to be a disused rabbit burrow.



When they emerge in spring, it is not long before the males are shedding their skins in preparation for courtship. And if you are very, very lucky, you may witness the famous 'Dance of the Adders' when two males compete, en route to a scent-emitting female, by twisting around one another whilst almost standing up!

Good spots for adders exist throughout Loch Lomondside and the Trossachs, but you have every chance of finding one even closer to home if conditions are right and you keep your eyes open in good habitat. Naturally you need to be very careful if you come across these animals. Do not approach them. You will have better and more prolonged views by watching them from a safe distance.

*Martin Culshaw*



**HERON  
HOUSE**  
EARLY YEARS

- Nurturing environment
- Encouraging active learning
- Promoting positive attitudes
- Supporting health and well-being
- Using curriculum for excellence
- After school facility

*A Nurturing and Learning Environment*

Heron House Early Years,  
Beech Drive, Killearn, G63 9SD  
t: 01360 550 162  
e:killearn@heronhousenurseries.co.uk

Heron House Early Years,  
959 Crookston Rd, Glasgow, G53 7DT  
t: 0141 810 5777  
e:crookston@heronhousenurseries.co.uk



# Lomond School

## Every day is an open day



### **New Lomond School bus service**

servicing Killearn, Drymen and Gartocharn Please contact the school for details.

Lomond School offers an academic education that will stretch and extend your child to their full potential with a strong extra curricular programme of sport, music, drama and outdoor activity.

We warmly welcome families to see round the school, meet staff and pupils and find out more about the unique opportunities that our pupils from Killearn and surrounding areas are enjoying. Just make an appointment to visit any time.

Financial assistance is available with fee reduction up to 100% from Transitus 2 upwards.

- Small class sizes
- Superb academic results
- Positive caring ethos
- Committed teachers
- Excellent facilities and new Sports Hall
- All through school (nursery to S6)
- Boarding and day places

**10 Stafford Street, Helensburgh**

**T 01436 672 476 [www.lomondschool.com](http://www.lomondschool.com)**

Lomond School is a co-educational HMC Independent School.