

FABRICS & FINISHES

S U M M E R 2 0 2 2



EZENZIAL®
DESIGNED for LIVING

OVER 1,500
PRODUCT
COMBINATIONS



CREATE YOUR OWN CURATED LINE



EZENZIAL®

**Our quality & compliance
is important to us**

Carefully selecting and mixing a variety of materials like wood, metal, stone, glass, fabric and leather, EZENZIAL has created a unique and beautiful collection of Contemporary Premium Upholstery and Case Goods.

**The materials we
use meet the
strictest
international
standards.**

EO / E1 plywood, MDF, glues,
paints & stains

FSC certified wood

California CARB composite wood

California TB117 foam and fabric

High-Density, High-Resiliency
foams

Live Smart Performance fabric

ISTA drop ship packaging

275Lb structured carton boxes



EZENZIAL®

Fresh Introductions Every Year

Each year, we debut brand new collections that include beds, large seating, occasional chairs, dining chairs, tables, case goods and complementary pieces. Each new collection is inspired by different moods, materials, colors and styles we discover or experience on our many travels across the globe. We offer a wide array of finishes and materials that our customers can choose from to fully customize their products.

LIVING

- Sofas, Sectionals
- Club Chairs
- Coffee & Side Tables
- Wall Tables

BEDROOM

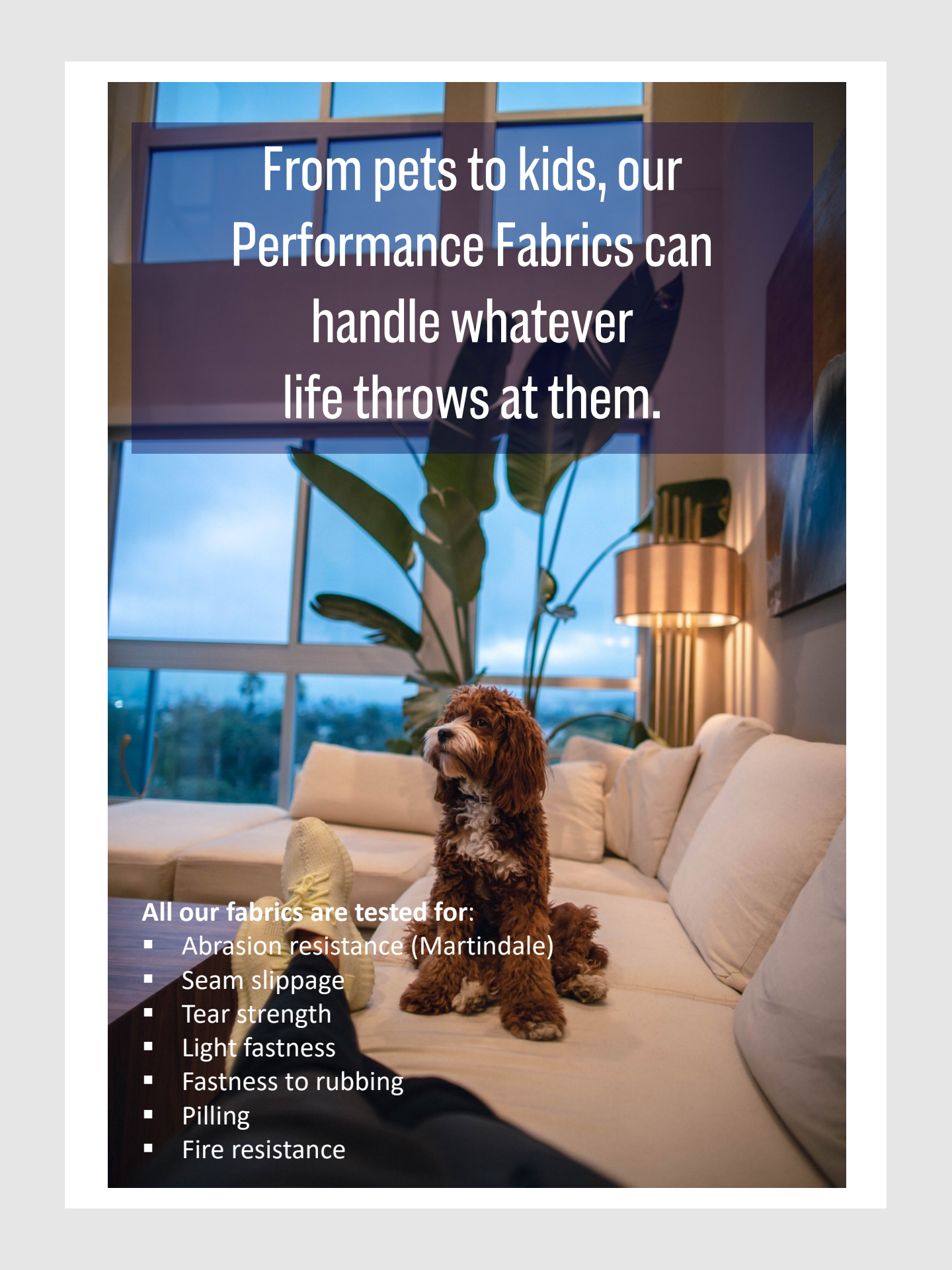
- Bed
- Bench
- Nightstand & Dresser
- Mirror

DINING

- Dining Tables
- Dining Chairs
- Sideboards
- Bars

STUDY

- Desks
- Bookshelf's

A small brown dog with floppy ears sits on a white sofa in a modern living room. The room features large windows with a view of a blue sky and greenery, a large potted plant, and a gold lamp. The scene is lit with warm, ambient light.

From pets to kids, our
Performance Fabrics can
handle whatever
life throws at them.

All our fabrics are tested for:

- Abrasion resistance (Martindale)
- Seam slippage
- Tear strength
- Light fastness
- Fastness to rubbing
- Pilling
- Fire resistance

Fabric Finishes

ANTONIO

100% Polyester, Martindale Rub Test: Over 100,000

Fabric Code: MFL

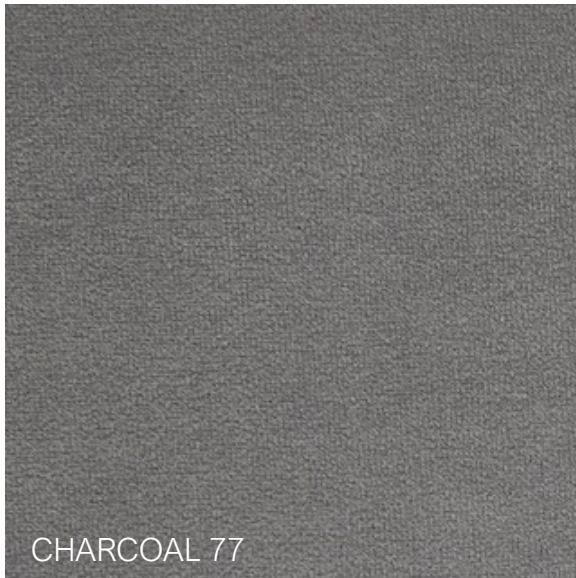
Price Group 1



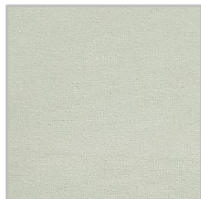
PERFORMANCE FABRIC



PET FRIENDLY



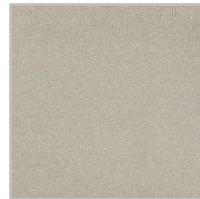
ATLANTIC 102



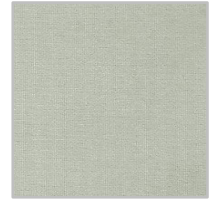
PORCELAIN 34



SAPPHIRE 103B



CAMEO 112



DOVE 57

Due to pattern, scale and color variations in computer monitors and printers, we strongly suggest you view actual samples before placing your order.

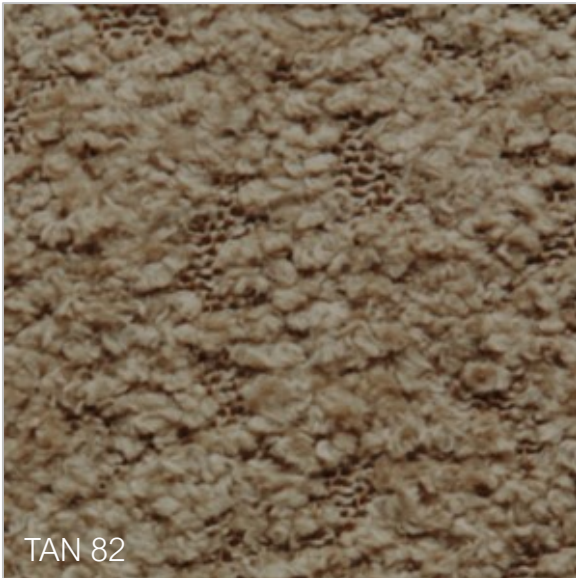
Fabric Finishes

BOUCLE

100% Polyester, Martindale Rub Test: Over 100,000

Fabric Code: PLY

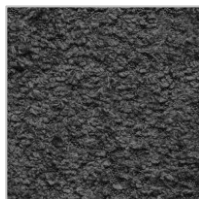
Price Group 2



Woven loop Boucle is a curly, comfortable and so soft you'll want to sit on your sofa all day long



IVORY 39



PEWTER 71B

Due to pattern, scale and color variations in computer monitors and printers, we strongly suggest you view actual samples before placing your order.

Fabric Finishes

HEMINGWAY

Viscose Chenille 100% Polyester, Martindale Rub Test: Over 25,000

Fabric Code: PLF

Price Group 2



SILVER 22

Due to pattern, scale and color variations in computer monitors and printers, we strongly suggest you view actual samples before placing your order.

Fabric Finishes

POLO CLUB

100% Polyester, Martindale Rub Test: Over 100,000

Fabric Code: MFJ

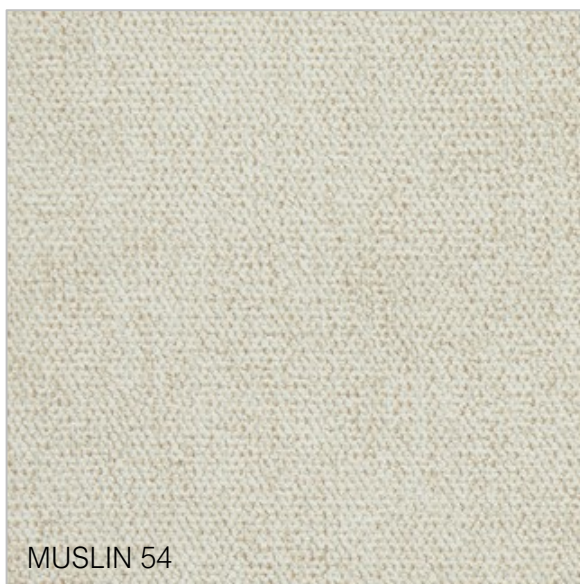
Price Group 2



PERFORMANCE FABRIC



PET FRIENDLY



MUSLIN 54



STONE 25D

Due to pattern, scale and color variations in computer monitors and printers, we strongly suggest you view actual samples before placing your order.

Fabric Finishes

PLUSH

Chenille 100% Polyester, Martindale Rub Test: Over 100,000

Fabric Code: PLV

Price Group 3



PERFORMANCE FABRIC



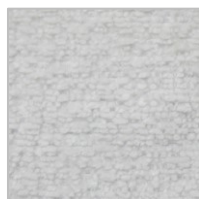
A rich bouclé fabric with a heavy chenille pile with a lamb's wool soft touch and feel.



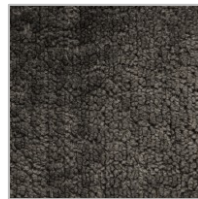
BEIGE 06



BROWN 12B



SNOW 38D



GRAPHITE 24



TAN 83

Due to pattern, scale and color variations in computer monitors and printers, we strongly suggest you view actual samples before placing your order.

Fabric Finishes

ALAMO

100% Polyester, Martindale Rub Test: Over 25,000

Fabric Code: MFM

Price Group 3



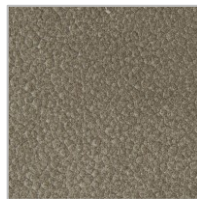
This embossed leather look has a rough texture with a soft touch. The longer pile of suede on top gives this a luxurious look and feel.



TAN 95



BROWN 16



ASH 79B

Due to pattern, scale and color variations in computer monitors and printers, we strongly suggest you view actual samples before placing your order.

Fabric Finishes

ATLANTIC

Viscose 90% Polyester, Martindale Rub Test: Over 90,000

Fabric Code: PLP

Price Group 4



PERFORMANCE FABRIC



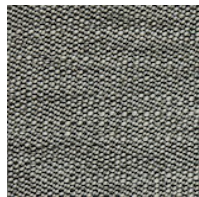
PET FRIENDLY



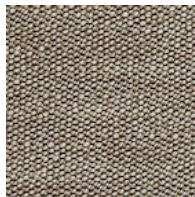
This boucle is heavy, but still very soft and drapable. The chenille in the background gives this fabric a silky soft touch.



SAND 93E



PANTHER 77F



BROWN 11H

Due to pattern, scale and color variations in computer monitors and printers, we strongly suggest you view actual samples before placing your order.

Fabric Finishes

DIAMOND

Woven Velvet 100% Polyester, Martindale Rub Test: Over 100,000

Fabric Code: VLJ

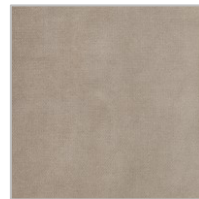
Price Group 4



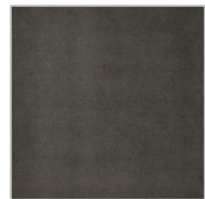
PET FRIENDLY



Diamond is a modern take on a real woven velvet with its heavy W-weave and elegant matte finish



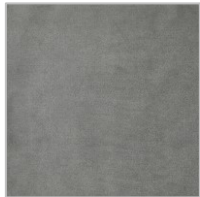
PLATINUM 78



MUMMY 19



OCHEER 83



CHARCOAL 18



MILK 36



OLIVE 69

Due to pattern, scale and color variations in computer monitors and printers, we strongly suggest you view actual samples before placing your order.

Fabric Finishes

MALLORCA

90% Polyester 10% Cotton, Martindale Rub Test: Over 90,000

Fabric Code: LNAH

Price Group 4



PERFORMANCE FABRIC



A multi-colored fabric available in subdued dark colors with a nice coarse structure, and the hint of cotton that accounts for a natural look.



GREY 72F



NATURAL 56K



SAND 99

Due to pattern, scale and color variations in computer monitors and printers, we strongly suggest you view actual samples before placing your order.

Fabric Finishes

SAN REMO

Chenille 100% Polyester, Martindale Rub Test: Over 90,000

Fabric Code: PLN

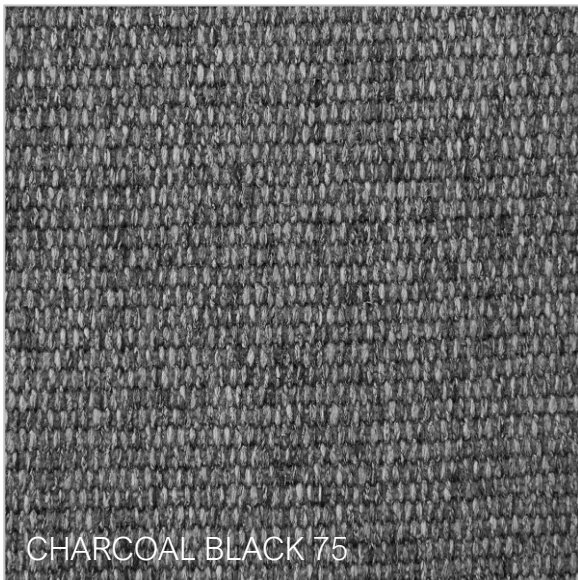
Price Group 4



PERFORMANCE FABRIC



PET FRIENDLY



A structured woven chenille with a faded look that results in two-tone colors under a natural base.



WINTER
CLOUD 39D



SUMMER
STORM 73



SWEET
CORN 55

Due to pattern, scale and color variations in computer monitors and printers, we strongly suggest you view actual samples before placing your order.

Fabric Finishes

ALLURE

Woven Velvet 80% Polyester 20% Cotton, Martindale Rub Test: Over 100,000

Fabric Code: VLL

Price Group 5



PET FRIENDLY



With its warm subdued colors this woven velvet has a more subdued matte vintage look and feel.



ASH 71B



BROWN 10B



MOUSE 52



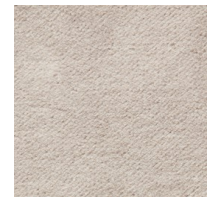
CHARCOAL 25



FROST 37C



SAGE 60B



TAN 96

Due to pattern, scale and color variations in computer monitors and printers, we strongly suggest you view actual samples before placing your order.

Fabric Finishes

DANSK

100% Polyester, Martindale Rub Test: Over 100,000

Fabric Code: PLQ

Price Group 5



PERFORMANCE FABRIC



This bouclé fabric has a looped appearance and knotted surface that ensures a natural look and ultimate soft touch.



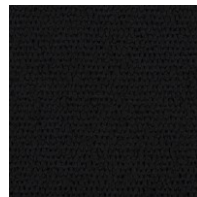
CREAM 57D



GREY 78E



DUST 92D



BLACK 21K



CHOCOLATE 10J

Due to pattern, scale and color variations in computer monitors and printers, we strongly suggest you view actual samples before placing your order.

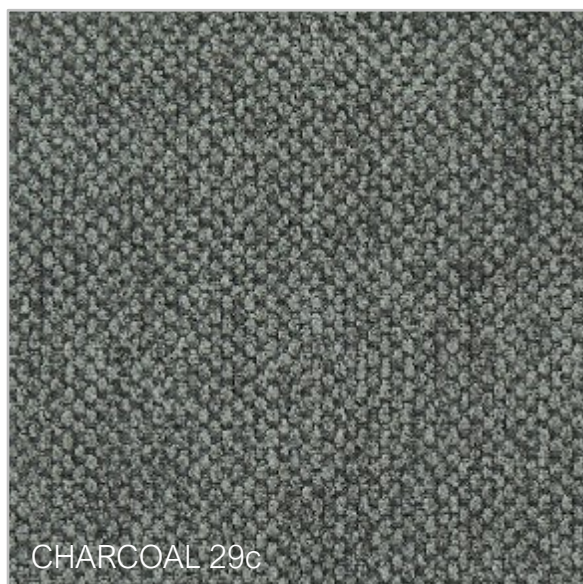
Fabric Finishes

RUBINO

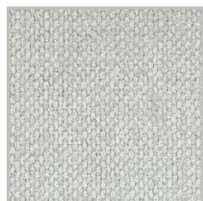
78% Viscose 22% Polyester, Rub Test: Over 15,000

Fabric Code: PLO

Price Group 5



TAUPE 56C



GREY 76J



WHITE 34F

Due to pattern, scale and color variations in computer monitors and printers, we strongly suggest you view actual samples before placing your order.

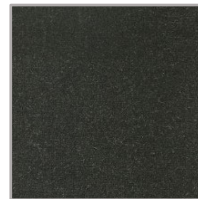
Fabric Finishes

GIOTTO

Velvet 90% Cotton, 10% Polyester, Rub Test: Over 100,000

Fabric Code: GIO

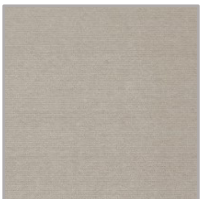
Price Group 6



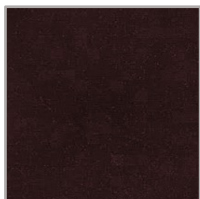
SHALE GREY 35



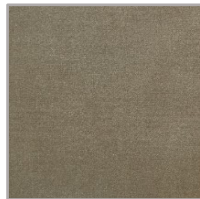
NAVY 28



ALMOND 16



CABERNET 23



MOUSE 31



OLIVE DRAB 08



TAN 96

Due to pattern, scale and color variations in computer monitors and printers, we strongly suggest you view actual samples before placing your order.

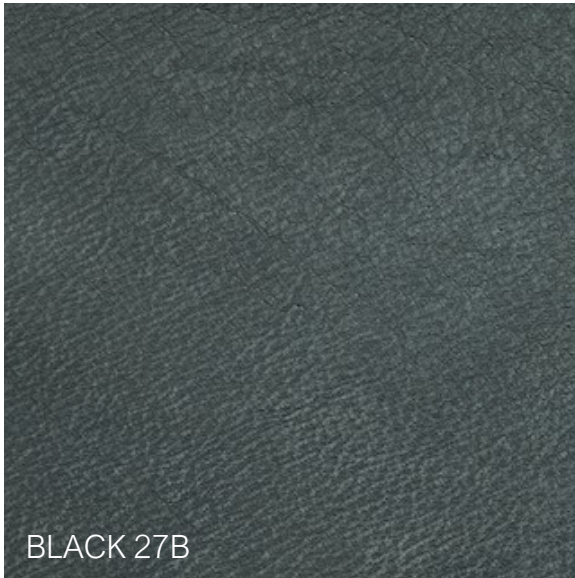
Leather Finishes

DANDI

Italian leather with Soft Vintage Semi-aniline hand scratched effect

Fabric Code: LRAI

Price Group 7



Due to pattern, scale and color variations in computer monitors and printers, we strongly suggest you view actual samples before placing your order.

Leather Finishes

VAIL

Leather with Corrected-grain and silky hand and smooth texture

Fabric Code: LRAD

Price Group 8



Due to pattern, scale and color variations in computer monitors and printers, we strongly suggest you view actual samples before placing your order.

Leather Finishes

LUSH

Soft, Frosted Wax Aniline Leather with open fibers and hand finishing

Fabric Code: LRAK

Price Group 9



Due to pattern, scale and color variations in computer monitors and printers, we strongly suggest you view actual samples before placing your order.

Leather Finishes

PROFONDO

Oil-infused aniline leather with medium sheen natural glow

Fabric Code: LRAA

Price Group 10



Due to pattern, scale and color variations in computer monitors and printers, we strongly suggest you view actual samples before placing your order.

Metal Finishes

STAINLESS STEEL



ANTIQUÉ BRASS SB150
201 Stainless Steel



ANTIQUÉ BRONZE SB160
201 Stainless Steel



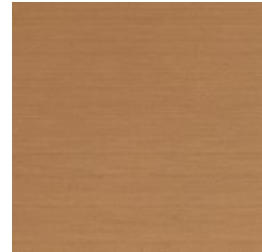
ANTIQUÉ SILVER SB76
201 Stainless Steel



BRUSHED STEEL SA140
304 Stainless Steel



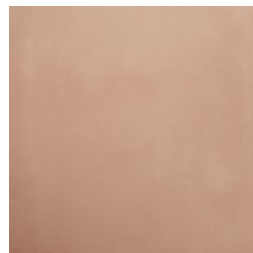
BRUSHED GOLD SA81B
304 Stainless Steel



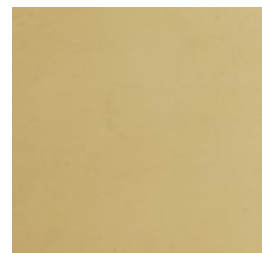
BRUSHED ROSE GOLD SA111B
304 Stainless Steel



POLISHED STEEL SB171
201 Stainless Steel



POLISHED ROSE GOLD SA110
304 Stainless Steel

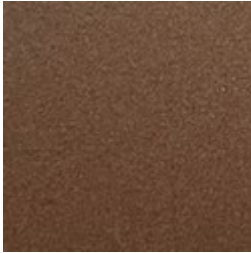


POLISHED YELLOW GOLD SA80
304 Stainless Steel

Due to pattern, scale and color variations in computer monitors and printers, we strongly suggest you view actual samples before placing your order.

Metal Finishes

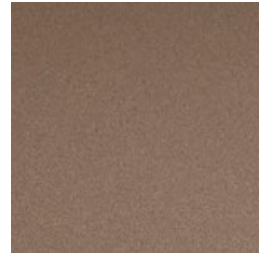
LACQUERED STEEL FINISHES



LUX BRONZE SE18B
Lacquered Steel



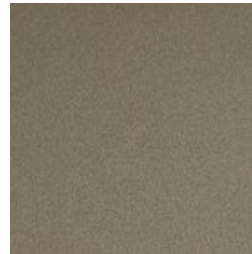
LUX BLACK SE22A
Lacquered Steel



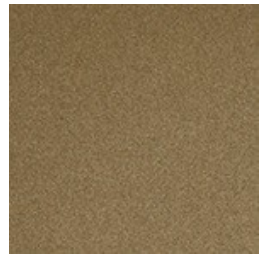
LUX PEARL SE53
Lacquered Steel



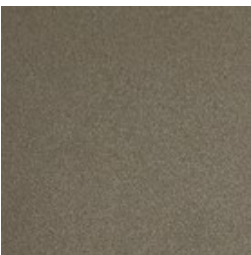
LUX CHAMPAGNE SE87
Lacquered Steel



LUX TITANIUM SE94
Lacquered Steel



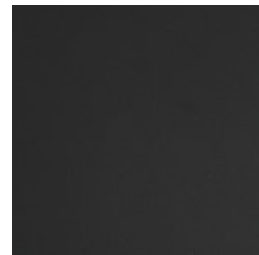
LUX BRASS SE153
Lacquered Steel



LUX MOON DUST SE162
Lacquered Steel



LUX SILVER SE173
Lacquered Steel



MATTE BLACK SC29
Lacquered Steel

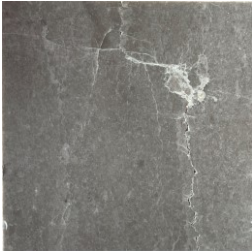
Due to pattern, scale and color variations in computer monitors and printers, we strongly suggest you view actual samples before placing your order.

Stone & Glass Finishes

MARBLE, PORCELAIN & GLASS



MARBLE BROWN MBL-18



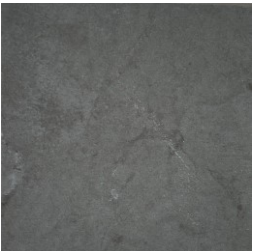
MARBLE GREY MBL-70B



MARBLE TAUPE MBL-95B



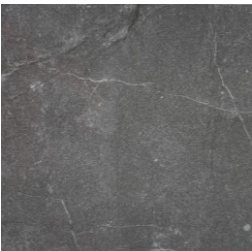
MARBLE WHITE MBL-33



PORCELAIN ARMANI PN73B



PORCELAIN CALACATTA PN36



PORCELAIN DARK GREY PN74C



GLASS BROWN GL-11



GLASS BLACK GL-29



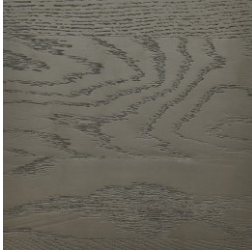
GLASS GREY GL-79



GLASS CLEAR GL-52

Wood Finishes

WOOD LEG FINISHES



ASH SMOKE AH-75B



ASH LIGHT BROWN AH-14



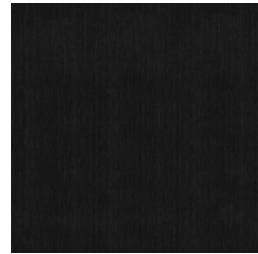
ASH BLACK AH-24



BIRCH CHATEAU BROWN BC-10



BIRCH ESPRESSO BC-13D



BIRCH PHANTOM BLACK BC-20



FRIEDAN Accent Chair

Code: CC2341

Material: Velvet

Diamond Ocher VLJ-83

Legs: Ash

Smoke AH-75B

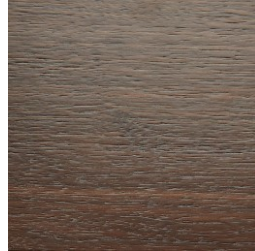
Due to pattern, scale and color variations in computer monitors and printers, we strongly suggest you view actual samples before placing your order.

Wood Finishes

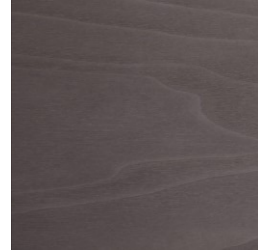
WOOD VENEER FINISHES



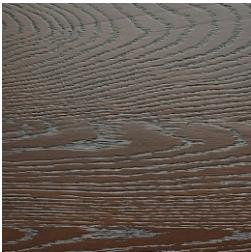
GLOSS LICORICE MF-60



WALNUT BROWN WT-14B



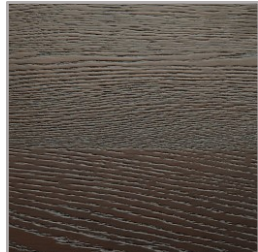
WALNUT GREY WT72D



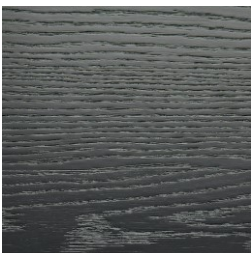
OAK BROWN OK-18



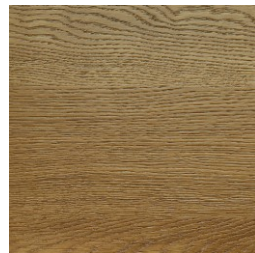
OAK BRUNO OK-14B



OAK ESPRESSO OK12B



OAK BLACK OK23



OAK NATURAL OK-56



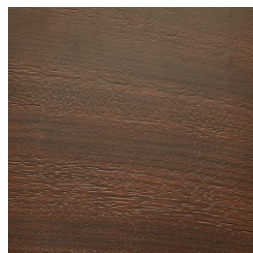
OAK GREY OK-71



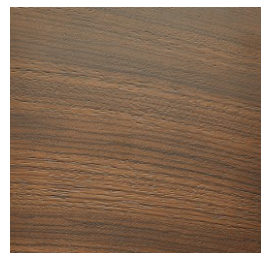
OAK SMOKE OK-78



OAK FOSSIL OK-92



ZEBRA DARK BROWN ZA-16



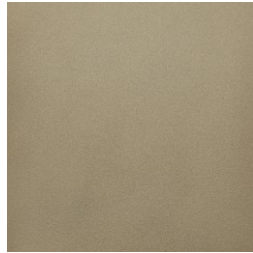
ZEBRA TAUPE ZA-51

Wood Finishes

LACQUERED WOOD FINISHES



LUX CHAMPAGNE WL-88



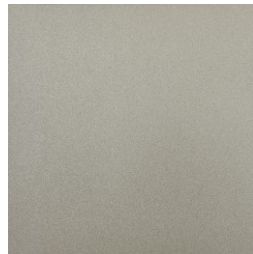
LUX TITANIUM WL-96



LUX BRASS WL-154



LUX BLACK WL-23



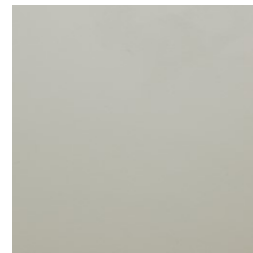
LUX MOONDUST WL-163



LUX SILVER WL-175



URBAN CREAMY MD-31B



URBAN MISTY MD-74B

SHAD Desk

Code: DK2696

Material: Lux Urban Creamy MD-74B

Legs: Lux Moondust SE-162

Top: Brown Walnut WT-14B



Due to pattern, scale and color variations in computer monitors and printers, we strongly suggest you view actual samples before placing your order.

EZENZIAL®

DESIGNED for LIVING



EZENZIAL

—www.EZENZIALLIVING.com—



EZENZIAL LIVING LLC.
info@ezenzialliving.com

AMSTERDAM CALIFORNIA SHANGHAI