

LSBU MA CREATIVE PERFORMANCE SHOWCASE 2023



EST 1892

LSBU



EDRIC
THEATRE

.....

MA CREATIVE PERFORMANCE PRACTICE SHOWCASE 2023

The LSBU MA Creative Performance Showcase 2023 is a vibrant theatre event showcasing new pieces by this year's cohort from the MA Creative Performance Practice programme. Exploring theatre's liminal spaces and topics of grief, violence and gender, the event features brand-new work written and devised specifically for this showcase. The Showcase generates provocative and engaging theatre from LSBU's up-and-coming directing talent.

.....

Wednesday, 18 January 2023

VILENCE

By Ricki Jayne Burvill (Director, Writer & Performer)

VILENCE. One woman, recounting the events of the night that changed her life forever.

This show contains flashing lights, explicit language and audi, and themes of a sexual and violent nature that may be upsetting for some viewers. Viewer discretion advised.



.....

The Case

By Marta Loch

What happens if you lose everything you ever loved? When everything you wanted to protect is destroyed? Sarah was an ordinary woman in her late 30's before her life changed forever. The man that sexually assaulted and murdered her daughter gets to live while she's suffering after losing her whole world. All she wants is to sit in front of him and ask him one question. What will happen if her only wish is denied? How far can mother's love go?

The performance was created in collaboration with directors Connor Brown and Cameron McColm. Performed by Marta Loch.

Friday, 20 January 2023

Antecedent

written & directed by Josh Johnson

How do we deal with things left unsaid? When faced with the unexpected loss of someone we love, can the relationships around them continue or will they deteriorate and disappear?

Antecedent is an immersive theatrical experience that tells the story of a family, fractured by death and divorce. As each individual deals with the trauma in their own way, audiences will learn it's never too late to accept help from those who love you. All you must do is admit it's okay to not be okay.

Cast:

Elaine: Deborah E Mali Smith

David: Christopher Page

John: Patrick Augustin Barras-Hargan

Beth: Flora MacAngus

Michael: Harry Drane

Jess: Alexandra Clare



this is not a play about ophelia (a play about ophelia)

By Lyse Marcelle

Life is a whirlwind of boys, periods, parties and university applications. Then her dad dies suddenly. There are still boys, periods, parties and university applications, but now they're tainted by a grief-stricken ophelia. she didn't know what she wanted before but now ophelia feels like her future is written for her. We all know that in William Shakespeare's 'Hamlet' she eventually drowns in her grief... but what if she doesn't have to?

'this is not a play about ophelia (a play about ophelia)' is a semi-autobiographical exploration of bereavement care in the UK set against the backdrop of a lesser explored part of Elsinore Castle.

Credits:

Lyse Marcelle: Writer/Director

Daniela Lucinda Santos: Assistant Director

Natasha Haward: Ophelia

Face Up

By Lorraine Woodley-Bitmead

Face Up is a play which explores the accumulated experience of racism and its impact on physical and mental health. The piece revolves around the world of a screenwriter who is working to a deadline, as she continues to research and tries to finish writing the screenplay some of her own experiences rise to the surface. The play poses the questions of responsibility and facing up to a reality that ultimately affects us all.

Written & Directed by Lorraine Woodley-Bitmead

Charlene Baptiste played by Andrea Laing

Animation: Agnes Yeung

Visual & Sound Editing: Lorraine Woodley-Bitmead

Break My Silence Written & Performed Gabrielle Sey

.....

The Last Daughter

By Feeya Asmal

A daughter is forced to return to her empty family home after many years of living abroad. Despite desire to sleep, she is compelled by strange forces to unpack the baggage that she - and her family - left behind. The house may not be as empty as she thinks it is.

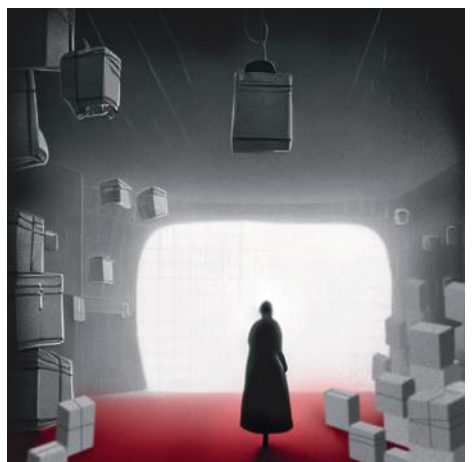
Directed by Chi

Performed by:

Feeya Asmal

Steisi Loulas

Sophia O'Connor



The students were supervised and supported by **Tolu Agbelusi**, **Shireen Mula**, **Elena Marchevska** and **Georgina Sowerby**.

Creative Team

Lighting

Chris Paton

Sound & AV

Alan Power

edrictheatre.com

edrictheatre@lsbu.ac.uk

 **edrictheatre**

For course information, visit lsbu.ac.uk