

# PORT- FOLIO

LUXE





Bar Hemingway - Ritz Paris  
See on page 34

On the cover:

Ritz Paris  
Architect: Thierry W. Despont

## Schwinghammer

PORT-FOLIO is a periodical publication in which we examine themes within our built work. It showcases the lighting solutions we've brought to the challenges unique to each project, but also celebrate the professional relationships and partnerships we have nurtured with architects and designers over the years.

SCHWINGHAMMER has long been associated as a Luxury Lifestyle Brand. We help our clients develop their vision while creating space between fantasy and reality by attention to detail and nuance, and the luxury of timeless.

NYC

# POLO- BAR

In collaboration with  
Alfredo Paredes - Ralph Lauren

Termed the best-lighted restaurant in New York by Le Bernardin Chef Eric Ripert, Polo Bar includes all the ingredients that make Ralph Lauren's style so quintessentially American. Think equestrian vibes, country club-style leather accents and luxuriously-crafted interiors.





Bar



Bath



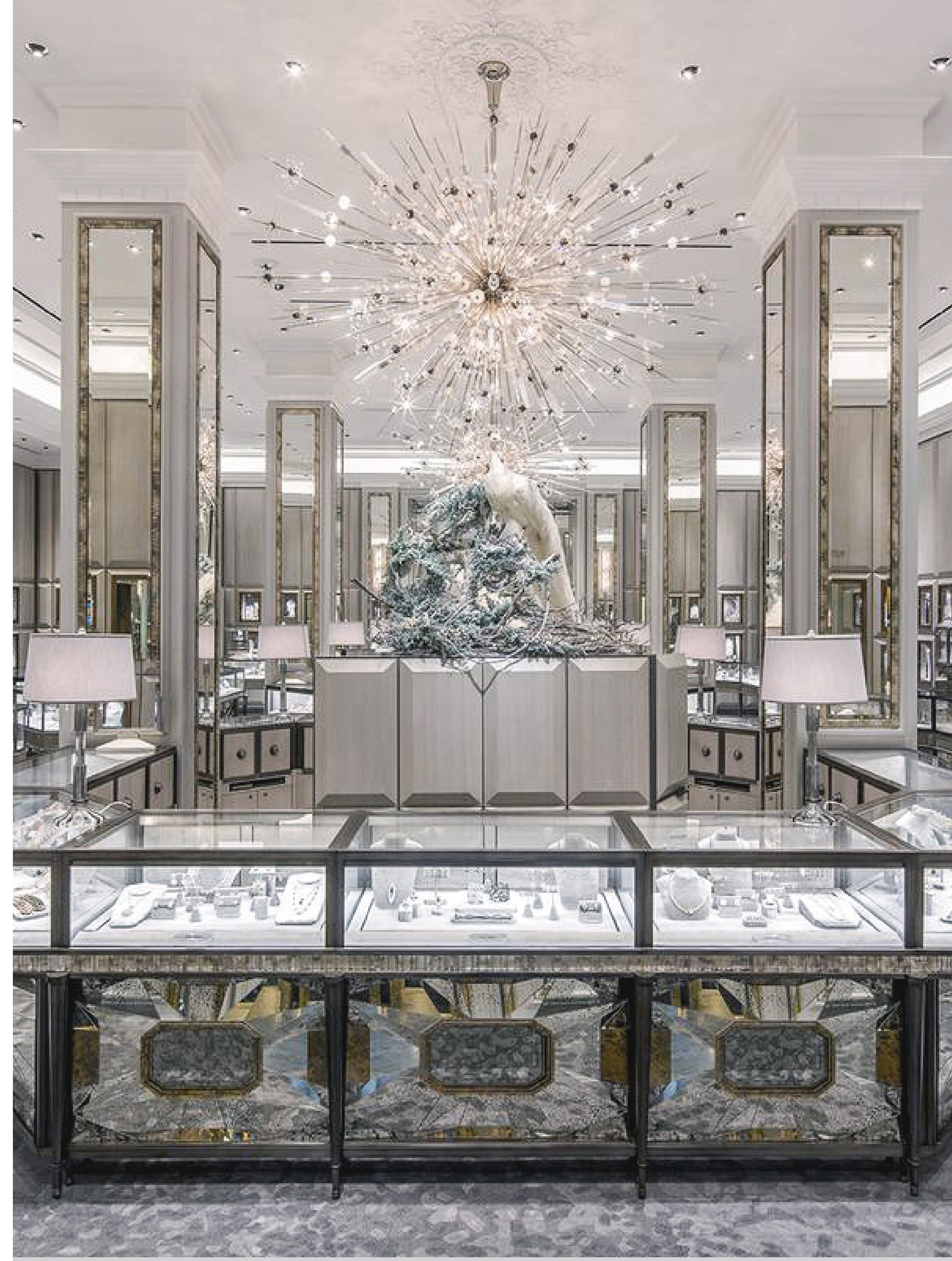




NYC

# BERG- DORF

In collaboration with  
Michael Neumann Architecture







Jewelry Display



NYC

# JET- LINX

In collaboration with  
Paul Bennett Architects

Jet Linx offers a different approach to private jet travel – a more focused, personalized approach. To better serve our clients and their individual needs. By doing so, Jet Linx is able to provide clients with a local team they know and trust, local planes, local pilots, and a local private terminal to serve them – all of which add up to an unparalleled level of personal service and value.







JETLINX





NYC

# 5TH- AVENUE

In collaboration with  
Michael Neumann Architecture

61



Traditional rooms are eliminated in favor of free-standing volumes, creating a loft-like atmosphere in this spacious Upper East Side duplex. Steps up to an elevated living room bring the large single pane windows closer to the floor, opening up the Central Park view. Smooth white plaster walls, high gloss white lacquer cabinetry, black granite, polished nickel accents and seamless cherry paneling and flooring comprise the rich palette of materials.

Stairwell





NYC

# CARTIER- MANSION

22

In collaboration with  
The Office of Thierry W. Despont

Architect Robert W. Gibson designed the 1905-built mansion, then known as the Morton F. Plant House, named for the wealthy railroad magnate. In 1917, Plant's new wife Maisie was so enamored with Pierre Cartier's double-strand necklace of 128 flawless natural pearls, the jeweler offered a trade—the \$1 million rare necklace plus \$100 for the 52nd Street and Fifth Avenue mansion which would become his new boutique.



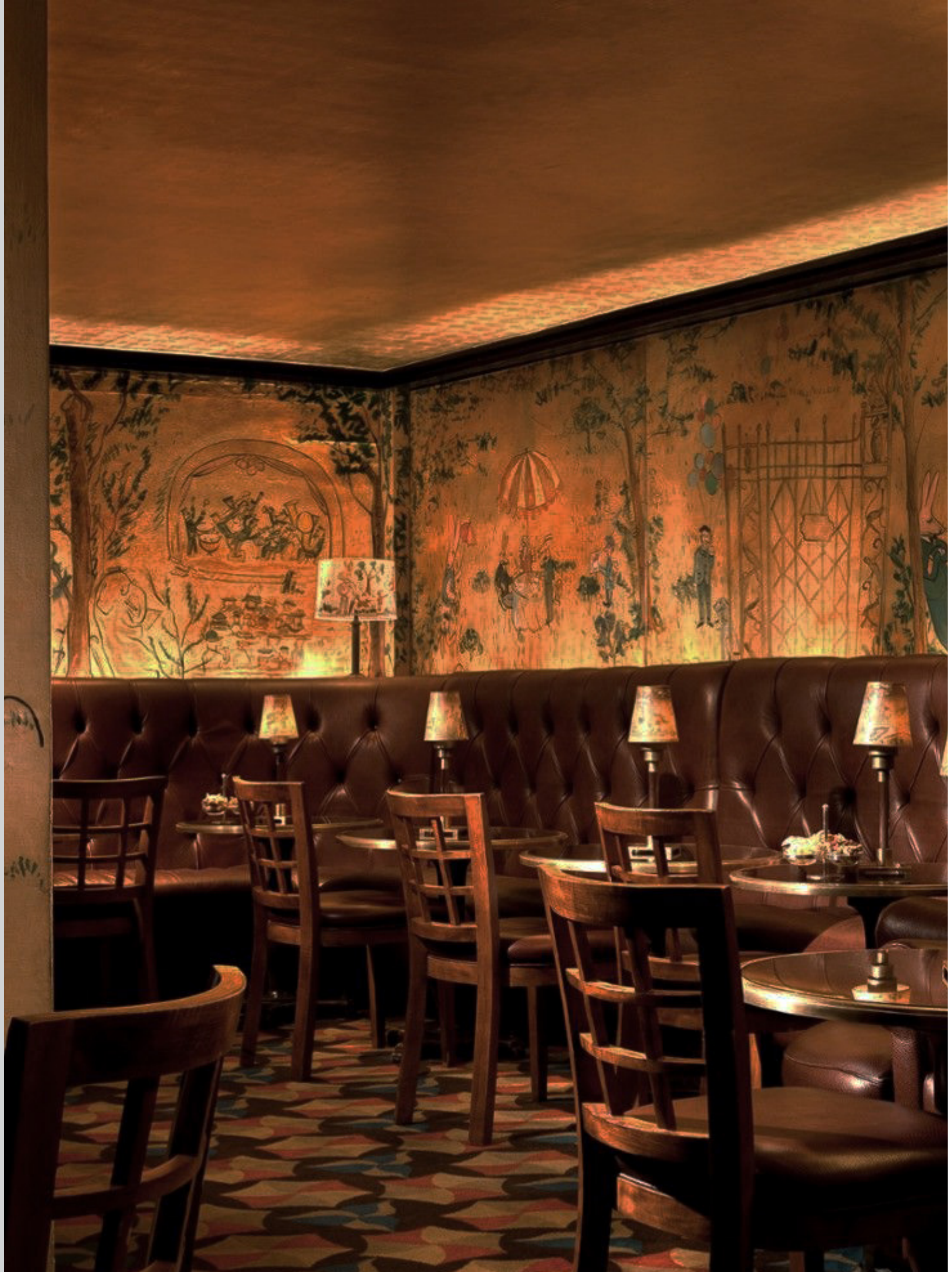


Salon



Exterior





NYC

# BEMELMANS- BAR

In collaboration with  
The Office of Thierry W. Despont

27

The Carlyle is an integral part of New York history. As the city's premier luxury residential hotel, it was a famous gathering place for socialites, world leaders and celebrities when Ludwig Bemelmans began to create his masterpiece murals at the hotel bar. Bemelmans was a successful artist for *The New Yorker*, *Vogue* and *Town and Country* and had achieved enormous success with the Madeline children's books series. Using his distinct style of art, he transformed the bar with whimsical scenes of Central Park that included picnicking rabbits and ice skating elephants. Rather than be paid for his art, Bemelmans exchanged his work for a year and a half of accommodations at The Carlyle for himself and his family.



Bar



Mural

NYC

# AUTO- STORAGE

In collaboration with  
Frank Greenwald - Architect

"I've always seen cars as art. Moving art. While friends of mine were into paintings, I somehow felt that the real beauty of owning a rare and magnificently designed car was the fact that you can use it. You can look at it, enjoy its visual qualities, as with a painting, but you can also get inside and drive it - which means both enjoying the drive itself and going somewhere with it" - Ralph Lauren





Bugatti Atlantic Coupe





Ferrari

PARIS

# RITZ- PARIS

In collaboration with  
The Office of Thierry W. Despont





15 Place Vendome





Chanel Spa Pool

Restaurant



NYC

# WOOL- WORTH

40

In collaboration with  
The Office of Thierry W. Despont

The Woolworth Building soars above City Hall Park at the gateway to TriBeCa. Unprecedented in size and sophistication when it was first completed in 1913, this graceful tower remains an elegant jewel in the skyline of downtown Manhattan. The top thirty floors have been masterfully transformed by famed French architect Thierry W. Despont into The Woolworth Tower Residences: a limited collection of thirty-two luxury TriBeCa condominium residences atop a celebrated New York City landmark







Master Bath



Ribbed Vaults





Tower



335W 38th St  
New York, NY 10018  
212 967 5944

info@sl.gallery  
www.sl.gallery

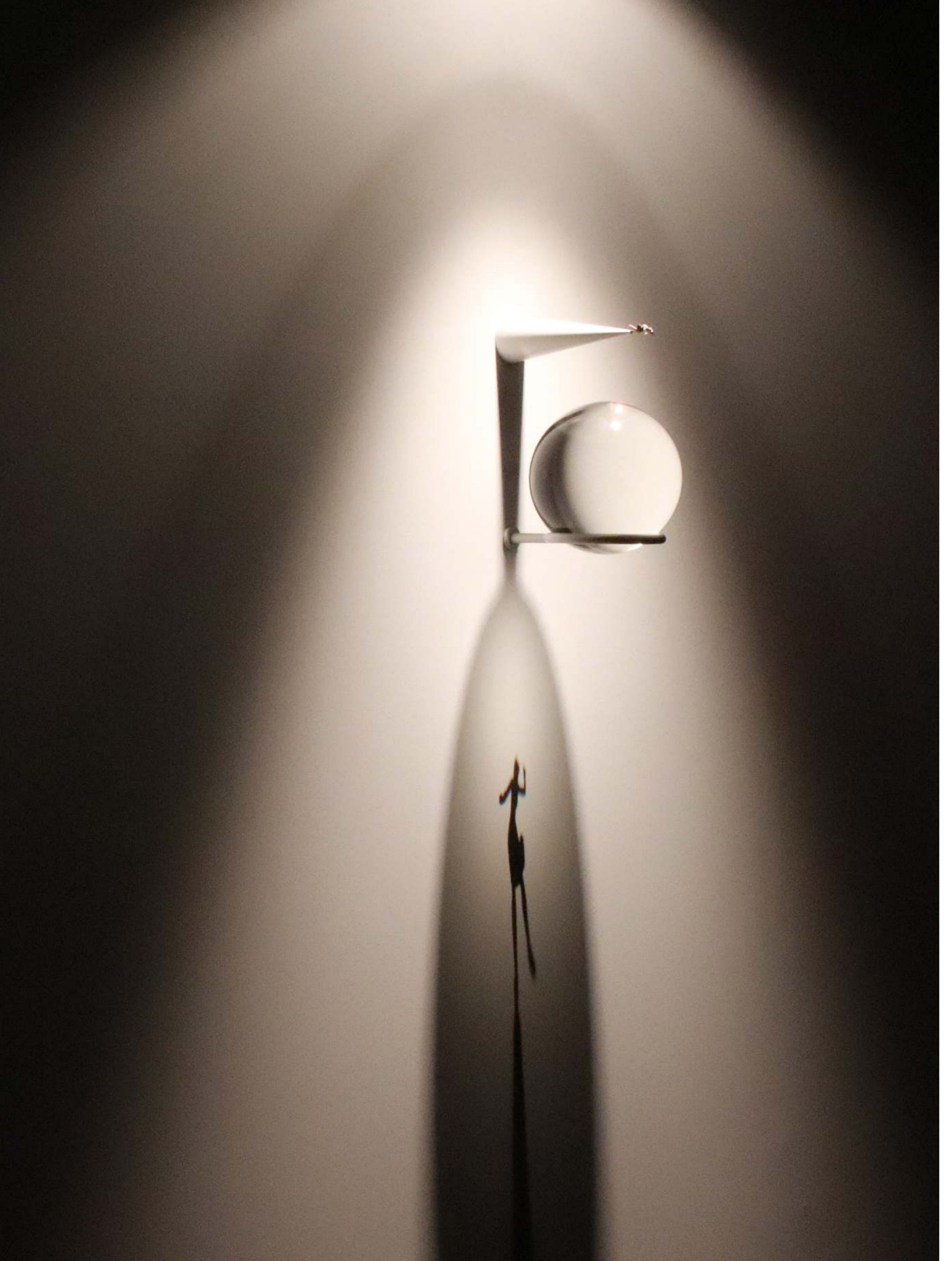
# SLGALLERY

Established in 2017, SL Gallery is an inclusive space dedicated to presenting works that merge contemporary art, lighting and new media technologies, providing support for the diverse creative practices of emerging, mid-career and established artists within the community.

Serving as an extension of the architectural lighting office at Schwinghammer, we are heavily inspired by visual art, design, and lighting on the edge of concept.

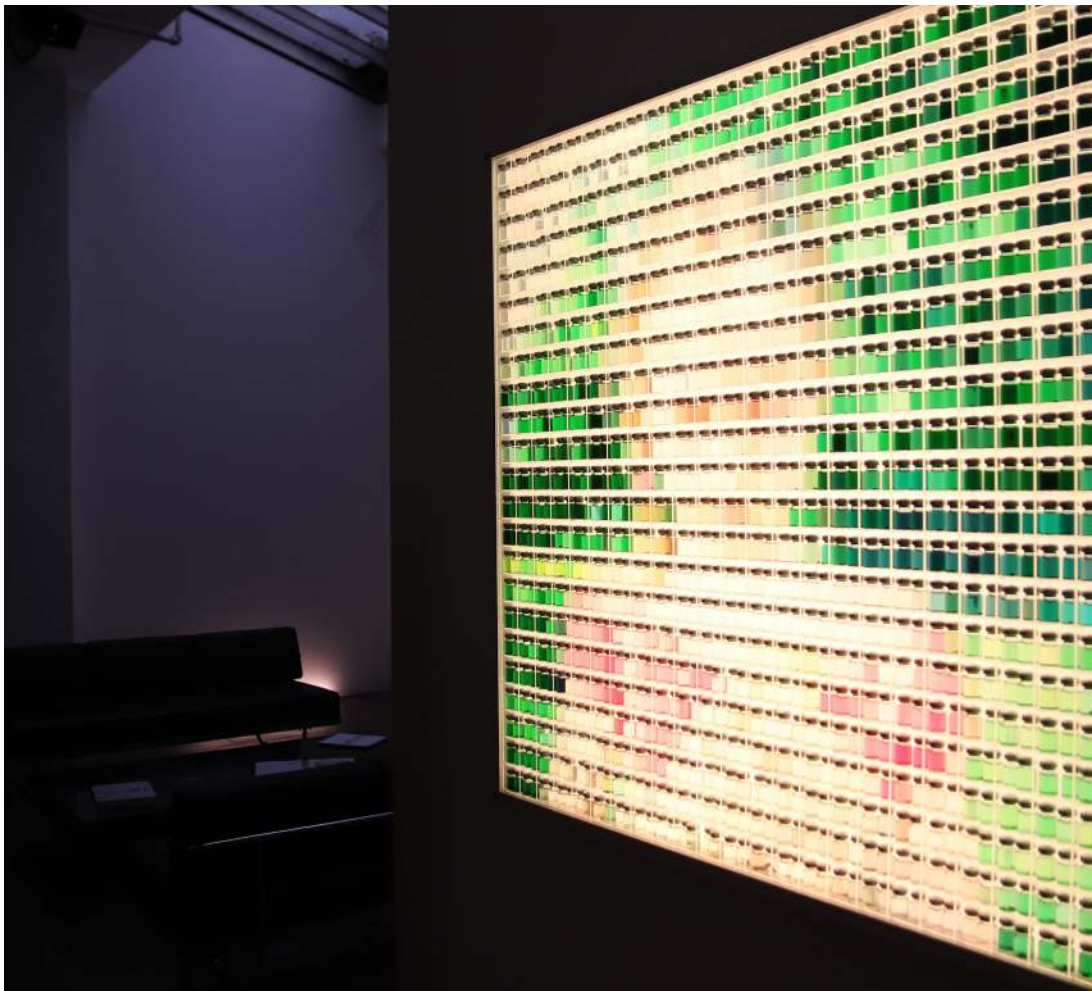
The artists selected to exhibit at SL Gallery are a representation of this vision and have included Fabrizio Corneli, Aleksandra Stratimirovic, Anne Katrine Senstad and Karen Gunderson.

Tony Long  
Gallery Director





< Fabrizio Corneli: "Laboratorio" Installation View  
Targetti Light Art: May 3 - June 15, 2018 at SL Gallery



Aleksandra Stratimirovic: "Girl With Ice Cream" Installation View



Issue 2

# SCHWINGHAMMER

Schwinghammer Lighting LLC

NYC: 335 West 38th St New York, NY 10018  
212 967 5944

Miami: 3900 Biscayne Blvd Suite 1116 Miami, FL 33137  
305 422 1791

[www.schwinghammerlighting.com](http://www.schwinghammerlighting.com)