



# SOFTBALL

Spring 2025



UNDER ARMOUR

**THE ONLY  
WAY IS  
THROUGH.**







## VISION

---

TO INSPIRE YOU WITH PERFORMANCE  
SOLUTIONS YOU NEVER KNEW  
YOU NEEDED BUT CAN'T IMAGINE  
LIVING WITHOUT.

## MISSION

---

UNDER ARMOUR  
MAKES YOU BETTER.

## SOFTBALL

- 002 SOFTBALL UNIFORMS
- 026 SOFTBALL APPAREL
- 030 SOFTBALL FOOTWEAR
- 032 SOFTBALL SOCKS
- 033 SOFTBALL GLOVES
- 034 SOFTBALL BAGS
- 036 SOFTBALL ACCESSORIES
- 037 SOFTBALL HEADWEAR
- 038 SOFTBALL EYEWEAR
  
- 044 WOMEN'S AF TRAINING
- 050 UNIFORM ORDERING INFO



# SOFTBALL GAMEDAY

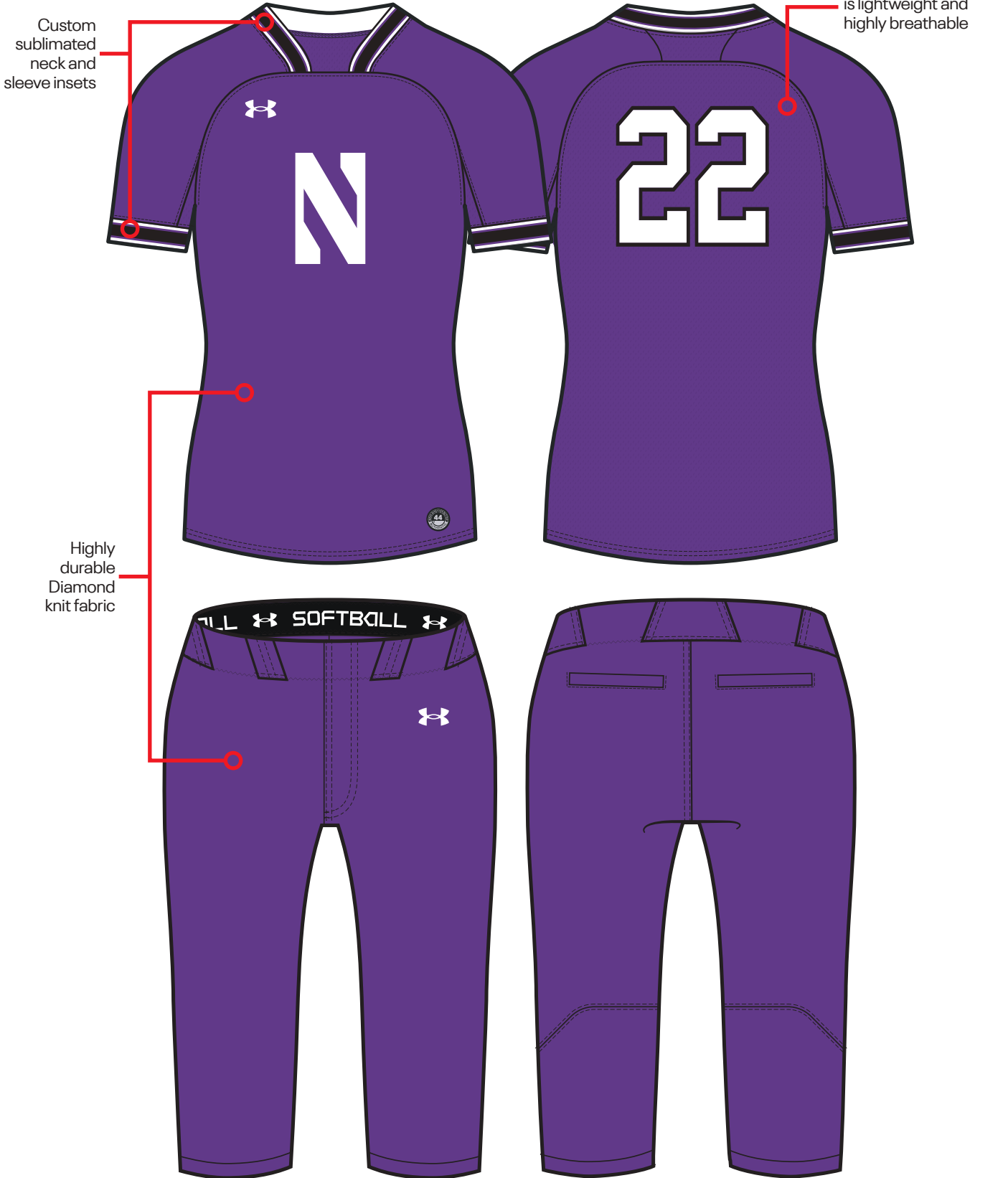
- Select Custom UA Team Uniforms
- Set jersey and pant pricing

## GAMEDAY PROGRAM DETAILS

- Jersey - fully decorated includes:
  - Team name (1 or 2 color Armourfuse® twill)
  - Front and back numbers (1 or 2 color Armourfuse® twill)
  - Heater: Sublimated inserts at sleeve ends and around neck
  - Yarn: Braided or piped at sleeve ends and around placket or neck (1/2" or 3/16")
- Pant - fully decorated includes:
  - Heater: Sublimated insert down side seam
  - Yarn: Braided or piped down side seam (1/2" or 3/16")
- All catalog fonts included
- 2", 3" or 4" Team Name // 3" or 4" Front Number // 6" or 8" Back Number
- Additional details on page 53







# HEATER JERSEYS

XS-2XL, OVERSIZE 3XL

2-BUTTON	SIZE	FABRIC	PRICE
US032JW (W)	XS-2XL	SOLID	\$172.00
USP32JW (W)	XS-2XL	PINSTRIPES	\$202.00
V-NECK	DESIGN	FABRIC	PRICE
US020JW (W)	XS-2XL	SOLID	\$172.00
USP20JW (W)	XS-2XL	PINSTRIPES	\$202.00

- 100% Polyester
- Diamond Knit Front + Diamond Mesh Back (Pinstripe version = Diamond Knit Back)
- Functional top two buttons or modern v-neck construction
- Sublimated inserts around neck and sleeves
- Size SM Measurements: front body length 26.50", sleeve length from center neck 16", across chest width from under armhole 19.5"
- Modern raglan sleeves shaped to increase shoulder mobility and full mesh back for overall comfort and breathability

OVERSIZED SURCHARGE +\$5 PER SIZE



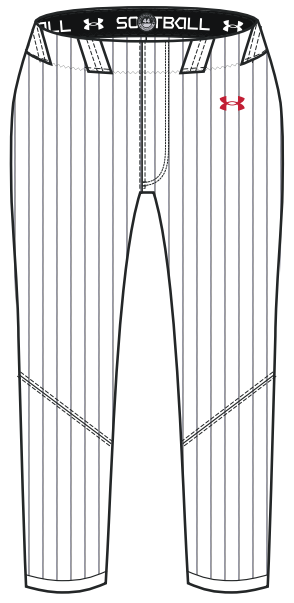
# HEATER PANTS

XS-2XL, OVERSIZE 3XL

MID-CALF	DESIGN	FABRIC	PRICE
US034PW (W)	XS-2XL	SOLID	\$146.00
USP34PW (W)	XS-2XL	PINSTRIPES	\$176.00
KNICKER	DESIGN	FABRIC	PRICE
US023PW (W)	XS-2XL	SOLID	\$146.00
USP23PW (W)	XS-2XL	PINSTRIPES	\$176.00

- 100% Polyester - Diamond Knit
- Mid-Calf Pant inseam = 22" Knicker inseam = 18"
- 2-ply reinforced knees + hamstrings
- Sublimated side inserts
- Mid-Calf pant designed to end just below bulk of the calf muscle when pulled down tight
- Custom inseams available on all pants -2" or +2" (no charge)

OVERSIZED SURCHARGE +\$5 PER SIZE



**2-BUTTON**  
SHOWN WITH MID-CALF PANT

**V-NECK**  
SHOWN WITH KNICKER PANT

**JERSEY AND PANT COLORS:**

WHT	VWH	BBG	GPH	BLK	PUR	MDN
RYL	VBL	FGR	DKO	RED	MAR	CRD

**PINSTRIPES:**

WHT/BLK	WHT/PUR	WHT/MDN	WHT/RYL	WHT/VBL	WHT/FGR	WHT/DKO	WHT/RED	WHT/MAR	WHT/CRD
BBG/BLK	WHT/PUR	WHT/MDN	WHT/RYL	WHT/VBL	WHT/FGR	WHT/DKO	WHT/RED	WHT/MAR	WHT/CRD
VWH/BLK	WHT/PUR	WHT/MDN	WHT/RYL	WHT/VBL	WHT/FGR	WHT/DKO	WHT/RED	WHT/MAR	WHT/CRD

- Dyed ground with sublimated pinstripes



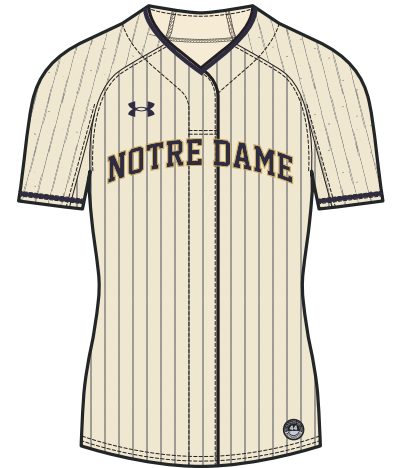
## YARD FAUX PLACKET JERSEY

XS-2XL, OVERSIZE 3XL

FULL PLACKET	DESIGN	FABRIC	PRICE
US031JW (W)	XS-2XL	SOLID	\$166.00
USP31JW (W)	XS-2XL	PINSTRIPES	\$196.00

- 100% Polyester
- Diamond Knit Front + Diamond Mesh Back (Pinstripe version = Diamond Knit Back)
- Fake Placket front closure with functional top two buttons
- Size SM Measurements: front body length 26.50", sleeve length from center neck 16", across chest width from under armhole 19.5"
- Modern raglan sleeves shaped to increase shoulder mobility and full mesh back for overall comfort and breathability

OVERSIZED SURCHARGE +\$5 PER SIZE



## YARD PANTS

XS-2XL, OVERSIZE 3XL

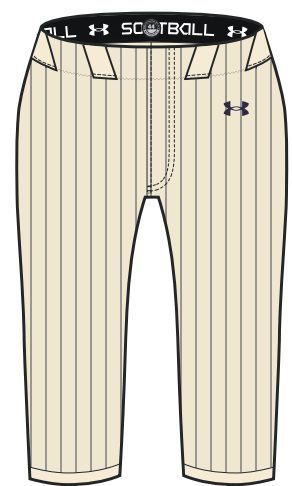
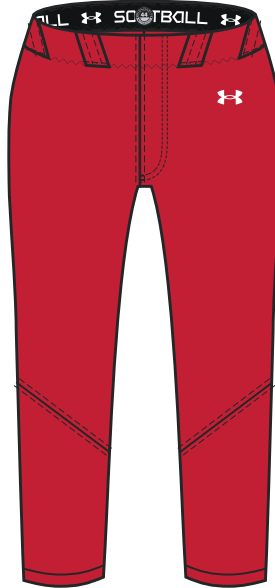
MID-CALF	DESIGN	FABRIC	PRICE
US033PW (W)	XS-2XL	SOLID	\$136.00
USP33PW (W)	XS-2XL	PINSTRIPES	\$166.00

KNICKER	DESIGN	FABRIC	PRICE
US027PW (W)	XS-2XL	SOLID	\$136.00
USP27PW (W)	XS-2XL	PINSTRIPES	\$166.00

- 100% Polyester - Diamond Knit
- Mid-Calf Pant inseam = 22"  
Knickers inseam = 18"
- 2-ply reinforced knees + hamstrings
- Mid-Calf pant designed to end just below bulk of the calf muscle when pulled down tight
- Custom inseams available on all pants  
-2" or +2" (no charge)

OVERSIZED SURCHARGE +\$5 PER SIZE



**FULL PLACKET**

SHOWN WITH MID-CALF PANT

**FULL PLACKET**

SHOWN WITH KNICKER PANT

### JERSEY AND PANT COLORS:

WHT	VWH	BBG	GPH	BLK	PUR	MDN
RYL	VBL	FGR	DKO	RED	MAR	CRD

### PINSTRIPES:

WHT/BLK	WHT/PUR	WHT/MDN	WHT/RYL	WHT/VBL	WHT/FGR	WHT/DKO	WHT/RED	WHT/MAR	WHT/CRD
BBG/BLK	WHT/PUR	WHT/MDN	WHT/RYL	WHT/VBL	WHT/FGR	WHT/DKO	WHT/RED	WHT/MAR	WHT/CRD
VWH/BLK	WHT/PUR	WHT/MDN	WHT/RYL	WHT/VBL	WHT/FGR	WHT/DKO	WHT/RED	WHT/MAR	WHT/CRD

- Dyed ground with sublimated pinstripes





# SOFTBALL ARMOURFUSE

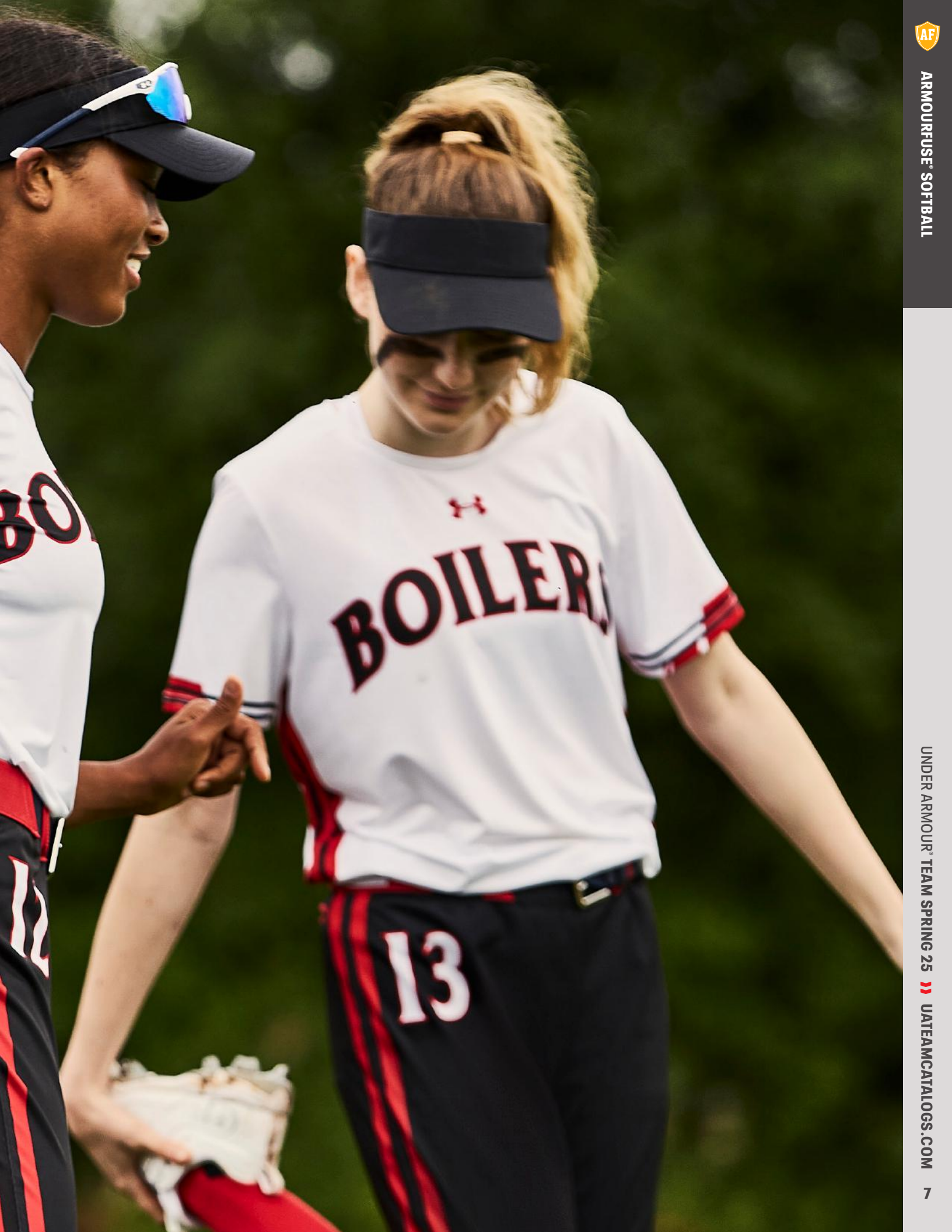
- Brilliant, vibrant team colors permanently fused directly into textiles
- Limitless customization, all-inclusive pricing with exclusive UA designs and customized prints
- 41 different colors and 18 prints available
- 6 piece minimum order

**Diamond Select Jersey:** 100% Polyester featuring a Diamond Knit front & Diamond Mesh back.

**Diamond Jersey:** 100% Polyester featuring Diamond Mesh front and 87% Polyester /13% Elastane Utility Mesh back.









CAMDEN 3 STRIPE

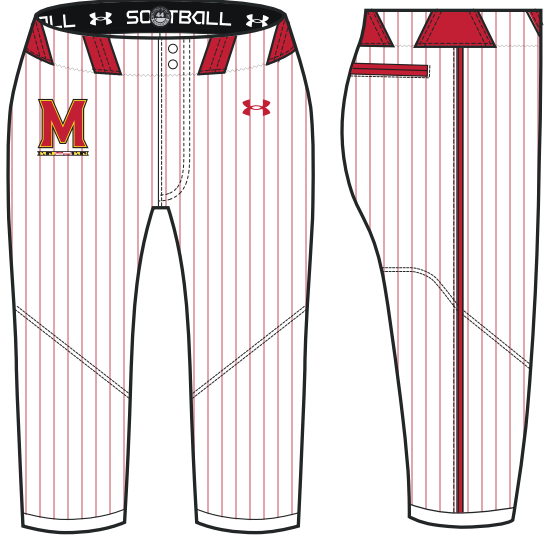
**NEW**

### AF DIAMOND SELECT KNICKER PANT

FIRST SHIP: 10/25/2024 //  
XXS-2XL, YSM-YXL

STYLE	SIZE	PRICE
UJSPKZW (W)	XXS-2XL	\$149.50
UJSPKZG (Y)	YSM-YXL	\$149.50

- 100% Polyester-Sublimated
- Reinforced 2-Ply knee and rear slide zone
- Upgraded Elastic Waistband
- Full functioning zipper
- Can be paired with Diamond or Diamond Select Jerseys
- Inseam (W): 18" Inseam (G YMD): 14.5



TURNER

OVERSIZED SURCHARGE +\$5 PER SIZE // EXTENDED/SHORTENED LENGTHS OFFERED, SEE PAGE 54 FOR MORE INFO







CAMDEN 5 STRIPE



FLANNEL



SOLID



PINSTRIPLE

OVERSIZED SURCHARGE +\$5 PER SIZE // EXTENDED/SHORTENED LENGTHS OFFERED, SEE PAGE 54 FOR MORE INFO



ARMOURFUSE® UNIFORMS // ORDERING INFORMATION AND CUSTOMER SERVICE: 1-888-871-0990 // [www.underarmourteamuniforms.com](http://www.underarmourteamuniforms.com)

FILL-IN LIFECYCLE TIMING FOUND ON PAGE 56. DECORATION OPTIONS AND ORDERING INFORMATION ARE AVAILABLE ON PAGES 50-56.

## AF DIAMOND PANTS

NEW NAME, SAME GREAT PRODUCT  
(Previously W AF Softball Pants)

XS-2XL, OVERSIZE 3XL, YSM-YXL

STYLE	SIZE	FABRIC	PRICE
UJSPSKW (W)	XS-2XL	SUBLIMATED	\$118.50
UJSPSKG (G)	YSM-YXL	SUBLIMATED	\$108.50

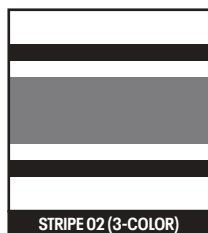
- 100% Polyester-Sublimated
- Inseam = 18"
- Available in Pinstripes/Solid
- Side Seam Team Stripe Available
- Can be paired with Diamond or Diamond Pro Jerseys
- No zipper for legging-like fit
- +2" or -2" inseam available
- Reinforced 2-Ply knee and rear slide zones
- Upgraded Elastic Waistband



### CAMDEN 3 STRIPE

NEW DESIGN FIRST SHIP: 10/26/2024

IF YOU HAVE QUESTIONS ON SLEEVE STRIPE PAIRINGS  
PLEASE ASK A QUALIFIED SALES PROFESSIONAL



UA RECOMMENDS STRIPE 02 TO  
MATCH SHEA 5 JERSEY DESIGNS



UA RECOMMENDS STRIPE 09 TO  
MATCH SHEA 3 JERSEY DESIGNS

ALL CATALOG STRIPES (01-09) ARE 2" WIDE AND  
AVAILABLE FOR SOLID AND PINSTRIPE PANTS (SEE PAGE XX)  
TURNER STRIPE .5" WIDE AVAILABLE FOR SOLID  
AND PINSTRIPE PANTS



### TURNER

OVERSIZED SURCHARGE +\$5 PER SIZE // EXTENDED/SHORTENED LENGTHS OFFERED, SEE PAGE 54 FOR MORE INFO





**CAMDEN 5 STRIPE**

NEW DESIGN FIRST SHIP: 10/26/2024



**FLANNEL**

NEW DESIGN FIRST SHIP: 10/26/2024



**SOLID**



**PINSTRIPLE**

OVERSIZED SURCHARGE +\$5 PER SIZE // EXTENDED/SHORTENED LENGTHS OFFERED, SEE PAGE 54 FOR MORE INFO



ARMOURFUSE® UNIFORMS // ORDERING INFORMATION AND CUSTOMER SERVICE: 1-888-871-0990 // [www.underarmourteamuniforms.com](http://www.underarmourteamuniforms.com)

FILL-IN LIFECYCLE TIMING FOUND ON PAGE 56. DECORATION OPTIONS AND ORDERING INFORMATION ARE AVAILABLE ON PAGES 50-56.



TURNER W/ PINS



CAMDEN W/ PINS

### AF SHOWTIME FAUX PLACKET JERSEY

XS-2XL, OVERSIZE 3XL

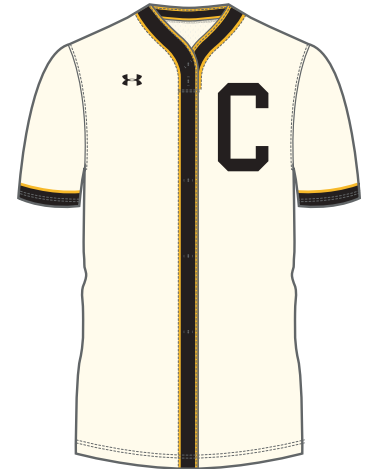
STYLE	SIZE	PACKAGE*	PRICE
UJSJX2W (W)	XS-2XL	SUBLIMATED	\$122.00
		1-COLOR TWILL	\$171.00
		2-COLOR TWILL	\$181.00

- 100% Polyester - Diamond Knit Front + Diamond Mesh Back
- Faux Placket front closure with functional top two buttons
- Size SM Measurements: body length 28", sleeve length 8.5", across chest width 18.5"

\*PACKAGE INCLUDES TEAM NAME + FRONT & BACK NUMBERS  
ADDITIONAL TWILL OPTIONS FOUND ON PAGE 52



SHEA W/ PINS



STITCHED



WINDMILL



COMISKY

OVERSIZED SURCHARGE +\$5 PER SIZE // EXTENDED/SHORTENED LENGTHS OFFERED, SEE PAGE 54 FOR MORE INFO





TURNER



CAMDEN



SHEA

OVERSIZED SURCHARGE +\$5 PER SIZE // EXTENDED/SHORTENED LENGTHS OFFERED, SEE PAGE 54 FOR MORE INFO



ARMOURFUSE® UNIFORMS // ORDERING INFORMATION AND CUSTOMER SERVICE: 1-888-871-0990 // [www.underarmourteamuniforms.com](http://www.underarmourteamuniforms.com)

FILL-IN LIFECYCLE TIMING FOUND ON PAGE 56. DECORATION OPTIONS AND ORDERING INFORMATION ARE AVAILABLE ON PAGES 50-56.





CAMDEN W/ PINS



SHEA W/ PINS

### AF SHOWTIME V-NECK JERSEY

XS-2XL, OVERSIZE 3XL

STYLE	SIZE	PACKAGE*	PRICE
UJSJV3W (W)	XS-2XL	SUBLIMATED	\$106.50
		1-COLOR TWILL	\$155.50
		2-COLOR TWILL	\$165.50

- 100% Polyester - Diamond Knit Front + Diamond Mesh Back
- Size SM Measurements: body length 28", sleeve length 8.5", across chest width 18.5"

\*PACKAGE INCLUDES TEAM NAME + FRONT & BACK NUMBERS  
ADDITIONAL TWILL OPTIONS FOUND ON PAGE 52



MURPHY W/ PINS



MOONSHOT



WINDMILL



COMISKY

OVERSIZED SURCHARGE +\$5 PER SIZE // EXTENDED/SHORTENED LENGTHS OFFERED, SEE PAGE 54 FOR MORE INFO





CAMDEN



SHEA



MURPHY

OVERSIZED SURCHARGE +\$5 PER SIZE // EXTENDED/SHORTENED LENGTHS OFFERED, SEE PAGE 54 FOR MORE INFO



ARMOURFUSE® UNIFORMS // ORDERING INFORMATION AND CUSTOMER SERVICE: 1-888-871-0990 // [www.underarmourteamuniforms.com](http://www.underarmourteamuniforms.com)

FILL-IN LIFECYCLE TIMING FOUND ON PAGE 56. DECORATION OPTIONS AND ORDERING INFORMATION ARE AVAILABLE ON PAGES 50-56.

**NEW**

## AF GAMETIME FAUX BUTTON JERSEY

FIRST SHIP: 10/25/2024 // XS-2XL, OVERSIZE 3XL, YSM-YXL

STYLE	SIZE	PACKAGE*	PRICE
UJSJG1W (W)	XS-2XL	SUBLIMATED	\$110.00
		1-COLOR TWILL	\$159.00
		2-COLOR TWILL	\$169.00
UJSJG1G (G)	YSM-YXL	SUBLIMATED	\$105.00

- 100% Polyester - Dimond Mesh front and sleeves for durability
- 87% Polyester, 13% Elastane - Utility Mesh full back for stretch
- Faux Button front closure with functional top two buttons
- W's SM: 26.5" Front Body from High Point of Shoulder, W's SM: 20.5" Across Chest

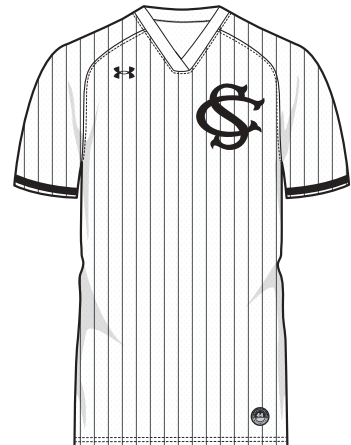

**NEW**

## AF GAMETIME V-NECK JERSEY

FIRST SHIP: 10/25/2024 // XS-2XL, OVERSIZE 3XL, YSM-YXL

STYLE	SIZE	PACKAGE*	PRICE
UJSJG2W (W)	XS-2XL	SUBLIMATED	\$99.00
		1-COLOR TWILL	\$148.00
		2-COLOR TWILL	\$158.00
UJSJG2G (G)	YSM-YXL	SUBLIMATED	\$94.00

- 100% Polyester - Dimond Mesh front and sleeves for durability
- 87% Polyester, 13% Elastane - Utility Mesh full back and collar for stretch
- Throwback Raglan sleeves for a vintage fit and feel
- W's SM: 26" Front Body from High Point of Shoulder, W's SM: 19.5" Across Chest


**PINSTRIPES**
**TURNER**
**TURNER PINS**

OVERSIZED SURCHARGE +\$5 PER SIZE // CAN ADD +2" AND +4" BODY LENGTH, SEE PAGE 54 FOR MORE INFO





CAMDEN 3-STRIPE

CAMDEN 3-STRIPE PINS

CAMDEN 5-STRIPE

FLANNEL

OVERSIZED SURCHARGE +\$5 PER SIZE // CAN ADD +2" AND +4" BODY LENGTH, SEE PAGE 54 FOR MORE INFO



ARMOURFUSE® UNIFORMS // ORDERING INFORMATION AND CUSTOMER SERVICE: 1-888-871-0990 // [www.underarmourteamuniforms.com](http://www.underarmourteamuniforms.com)

FILL-IN LIFECYCLE TIMING FOUND ON PAGE 56. DECORATION OPTIONS AND ORDERING INFORMATION ARE AVAILABLE ON PAGES 50-56.

# ARMOURFUSE



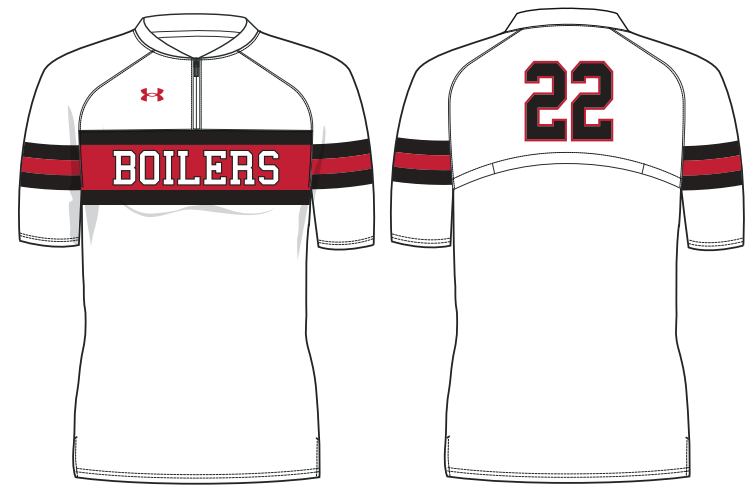
**HENLEY**

## ARMOURFUSE CAGE JACKET

XS-2XL, OVERSIZE 3XL, YXS-YXL

STYLE	SIZE	PRICE
UJSTZIW (W)	XS-2XL	\$120.00
UJSTZIG (G)	YXS-YXL	\$110.00

- Sublimated stretch woven fabric
- 2-ply collar, vented back, side-vent at the hem to provide room for belted softball pant
- Loose fit for shoulder mobility and to allow for wearing over a jersey
- Ability to add custom logo, team name, player name and player number



**WINDMILL**

OVERSIZED SURCHARGE +\$5 PER SIZE







# SOFTBALL STOCK

- Unique designs and advanced technology in stock
- Pre-set designs, ready to ship
- Best-in-class stock fabrications for all levels of play



## PACKAGE DECORATION

	1COLOR	2COLOR
<b>SCREENPRINT</b> Team Name, Front/Back Numbers	<b>\$17.50</b>	<b>\$27.50</b>
<b>TACKLE TWILL</b> Team Name, Front/Back Numbers	<b>\$49.00</b>	<b>\$59.00</b>

Additional Stock Options on page 52-53.

## ICON FAUX PLACKET JERSEY

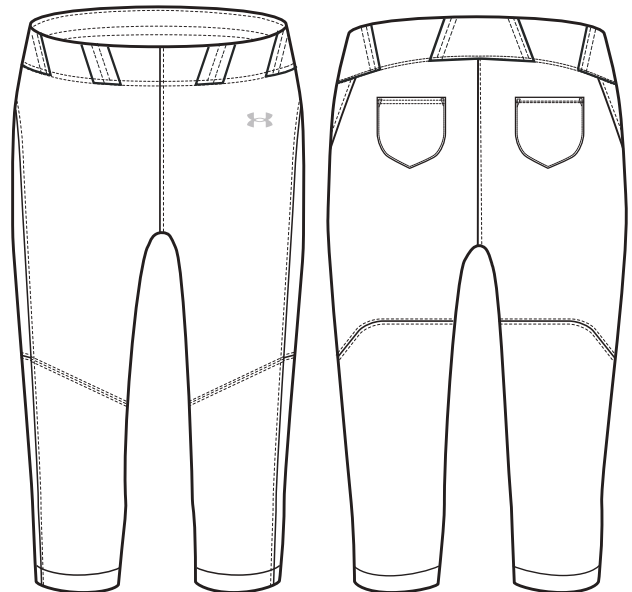
XS-2XL, YSM-YXL

STYLE	SIZE	PACKAGE	PRICE
USJ114W (W)	XS-2XL	BLANK	\$55.00
		1-COLOR TWILL	\$104.00
		2-COLOR TWILL	\$114.00
UBJ114Y (Y)	YSM-YXL	BLANK	\$49.50

- 100% Polyester - Diamond Knit Front + Diamond Mesh Back
- Size SM Measurements: body length 28", sleeve length 8.5", across chest width 18.5"

UA RECOMMENDS THAT THIS STYLE BE DECORATED WITH TACKLE TWILL ONLY

\*PACKAGE INCLUDES TEAM NAME + FRONT & BACK NUMBERS



## THE ACE BELTED KNICKER PANT

NEW DISCOUNTED PRICE

XXS-2XL, YSM-YXL

STYLE	SIZE	PACKAGE	PRICE
USP52KW (W)	XS-2XL	BLANK	<del>\$50.00</del>
USP52KG (G)	YSM-YXL	BLANK	<del>\$40.00</del>

- 100% Polyester- Diamond Knit
- Elastic waist band with beltloops
- Knicker Inseam (W) 18.5"
- 2-Ply reinforced knee and slide zone



## ICON FAUX PLACKET JERSEY

XS-2XL, YSM-YXL

STYLE	SIZE	PACKAGE	PRICE
USJ114W (W)	XS-2XL	BLANK	\$55.00
		1-COLOR TWILL	\$104.00
		2-COLOR TWILL	\$114.00
UBJ114Y (Y)	YSM-YXL	BLANK	\$49.50

- 100% Polyester - Diamond Knit Front + Diamond Mesh Back
- Size SM Measurements: body length 28", sleeve length 8.5", across chest width 18.5"

UA RECOMMENDS THAT THIS STYLE BE DECORATED WITH TACKLE TWILL ONLY

\*PACKAGE INCLUDES TEAM NAME + FRONT & BACK NUMBERS



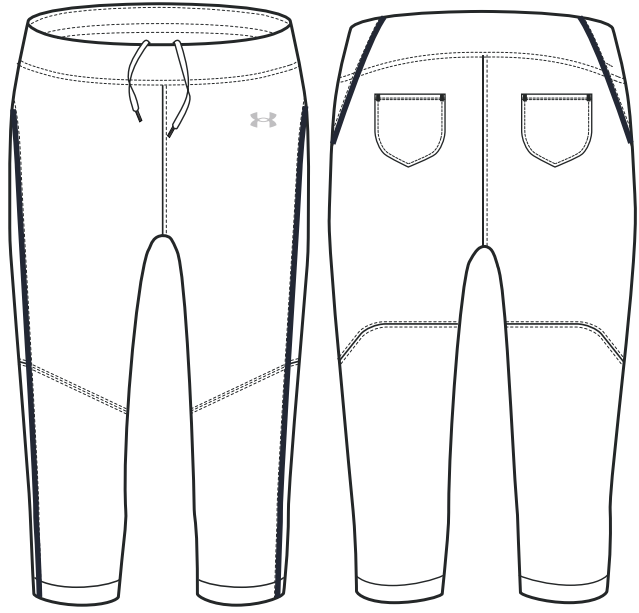
## THE ACE BELTLESS KNICKER PANT

NEW DISCOUNTED PRICE

XS-2XL

STYLE	SIZE	PACKAGE	PRICE
USP123W (W)	XS-2XL	BLANK	\$40.00

- 100% Polyester- Diamond Knit
- Beltless elastic waist band with drawstring
- Knickner Inseam (W) 18.5"
- 2-Ply reinforced knee





## ICON KNICKER PANT

XS-2XL, YSM-YXL

STYLE	SIZE	PACKAGE	PRICE
USP522W (W)	XS-2XL	BLANK	\$55.00
USP522G (G)	YSM-YXL	BLANK	\$49.50

- 100% Polyester - Diamond Knit
- Knicker inseam (W) 19" (G) 15"
- 2-ply reinforced knee

AFTER-BRAID +\$17. SEE PAGE 53 FOR DETAILS



## **NEW** GIRLS ICON PANT 2.0

YSM-YXL

STYLE	SIZE	PACKAGE	PRICE
USP5TPG (G)	YSM-YXL	BLANK	\$49.50

- Knicker inseam (G) 14.5"



SHOWN WITH ICON FAUX PLACKET  
SHOWN WITH AFTER-BRAID OPTION ON JERSEY AND PANT  
(NOT INCLUDED IN PRICE)



## IGNITE 2-BUTTON JERSEY

XS-2XL, YSM-YXL

STYLE	SIZE	PACKAGE	PRICE
USJ113W (W)	XS-2XL	BLANK	\$49.50
		1-COLOR SCREEN	\$67.00
		2-COLOR SCREEN	\$77.00
		1-COLOR TWILL	\$98.50
UBJ113Y (Y)	YSM-YXL	2-COLOR TWILL	\$108.50
		BLANK	\$44.50

- 100% Polyester - Base Mesh
- Size SM Measurements: body length 28", sleeve length 8.5", across chest width 18.5"

\*PACKAGE INCLUDES TEAM NAME + FRONT & BACK NUMBERS



SHOWN WITH ICON KNICKER PANT  
PANT SHOWN WITH AFTER-BRAID (NOT INCLUDED IN PRICE)

## IGNITE V-NECK JERSEY

XS-2XL, YSM-YXL

STYLE	SIZE	PACKAGE	PRICE
USJ112W (W)	XS-2XL	BLANK	\$39.50
		1-COLOR SCREEN	\$57.00
		2-COLOR SCREEN	\$67.00
		1-COLOR TWILL	\$88.50
UBJ112Y (Y)	YSM-YXL	2-COLOR TWILL	\$98.50
		BLANK	\$34.00

- 100% Polyester - Base Mesh
- Size SM Measurements: body length 28", sleeve length 8.5", across chest width 18.5"

\*PACKAGE INCLUDES TEAM NAME + FRONT & BACK NUMBERS



SHOWN WITH ICON KNICKER PANT



**NEW****1386966****UA W'S UTILITY PRO PANT****\$45.00 | LOOSE | XS-2XL****FIRST SHIP: 6/20/2024**

- Lightweight, durable, performance fabric built for gameday comfort
- Material wicks sweat & dries really fast
- Super-comfortable waistband stretches so you can move through your swing
- Reinforced slide zones in the hamstring & knee for added durability
- Open back pockets
- Updated back seam for more secure pockets & more flattering shape
- Inseam: 19"

100% POLYESTER

**heatgear**

001 BLK/WHT    100 WHT/BLK    025 CSR/BLK    075 BBG/BLK    410 MDN/BBG

**NEW****1386965****UA W'S UTILITY PRO BELTLESS PANT****\$45.00 | LOOSE | XS-2XL****FIRST SHIP: 6/20/2024**

- Lightweight, durable, performance fabric built for gameday comfort
- Material wicks sweat & dries really fast
- Wide, encased elastic waistband with internal drawcord
- Reinforced slide zones in the hamstring & knee for added durability
- Hidden, drop-in back pocket
- Inseam: 19"

100% POLYESTER

**heatgear**

001 BLK/WHT    100 WHT/BLK    075 BBG/BLK





## 1375665 UA W'S UTILITY SOFTBALL PANT 22

\$30.00 | **LOOSE** | XS-2XL

**GIRLS: 1375667** | \$25.00 | YXS-YXL

FIRST SHIP: C/O

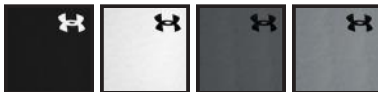
Not all softball pants are made the same. These are light enough for hot weather, but still give you the durability, stretch, and protection for a full season.

- Lightweight, durable, performance fabric built for gameday comfort
- Material wicks sweat & dries really fast
- Dual-layer knees & upper back of legs deliver added durability
- Soft, elastic waistband with belt loops for the perfect fit
- Encased elastic hem helps bottoms stay in place
- Open back pockets
- Inseam: 17.5"

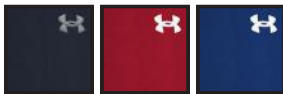
100% POLYESTER

G = GIRLS OFFERING

**heatgear**



001 G BLK/WHT    100 G WHT/BLK    012 G PITCH/BLK    075 G BBG/BLK



410 MDN/PITCH    600 RED/WHT    400 RYL/WHT



**NEW****1379830****UA W'S UTILITY PRO SLIDER**\$40.00 | **COMPRESSION** | XS-2XL**GIRLS: 1379832** | \$35.00 | YXS-YXL

FIRST SHIP: 6/20/2024

- Super-light & breathable HeatGear® fabric delivers superior coverage without weighing you down
- Interior foam spacer padding on back panel for added protection
- Material wicks sweat & dries really fast
- 4-way stretch material moves better in every direction
- Wide flat elastic waistband is super-comfortable & sits just right on the hips
- Inseam: 6.5"

87% POLYESTER, 13% ELASTANE

GIRLS OFFERED IN ALL COLORS

**heatgear**001  
BLK100  
WHT**1376114****UA W'S SOFTBALL BELT**

\$13.00 | OSFA, ADJUSTABLE

FIRST SHIP: C/O

- Elastic webbing with polyurethane
- Custom UA branded belt loop

70% ELASTIC, 30% PU

001  
BLK100  
WHT019  
CHC410  
MDN600  
RED400  
RYL475  
CBL

**NEW**

**1386963**

## UA W'S UTILITY PRO CAGE JACKET

\$65.00 | **LOOSE** | XS-2XL

FIRST SHIP: 6/20/2024

- UA Storm technology repels water without sacrificing breathability
- Durable, stretch-woven fabric is ultra-lightweight & lets you move
- 4-way stretch material moves better in every direction
- Back vent & underarm mesh panels for added breathability
- Side-vent bottom hem
- Rip stitch convertible sleeves so you can cut at the elbow seam for a short sleeve
- Open hand pockets
- Shaped hem

87% POLYESTER, 13% ELASTANE

**heatgear** **STORM**



001 BLK/WHT  
011 MOD/WHT  
410 MDN/WHT



**NEW**

**1386964**

## UA W'S UTILITY SOFTBALL SHORTS

\$40.00 | **LOOSE** | XS-2XL

FIRST SHIP: 6/20/2024

- UA Storm technology repels water without sacrificing breathability
- Stretch-woven fabric is tough but lightweight
- 4-way stretch material moves better in every direction
- Mesh panels for added breathability
- Encased elastic waistband with internal drawcord can be easily rolled down
- Invisible zip back pocket
- Curved hem for complete mobility

88% POLYESTER, 12% ELASTANE

**heatgear** **STORM**



001 BLK/WHT  
011 MOD/WHT  
410 MDN/NIMBUS



## 3026601 UA W'S GLYDE 2.0 MT

\$95.00 | SIZES: 5.5-12

FIRST SHIP: C/O

- Textile upper with PU coating provides sneaker comfort with superior durability
- Elevated plush pocket in heel for added comfort & locked in feel
- Charged Cushioning midsole converts impact into explosive speed & power on the diamond
- UA microtips technology provides comfort, more traction & less weight underfoot
- 10 strategically placed cleats on perimeter for more points of ground contact to reduce cleat pressure



## 3026603 UA W'S GLYDE 2.0 MT TPU

\$85.00 | SIZES: 5.5-12

FIRST SHIP: C/O

- Textile upper with PU coating provides sneaker comfort with superior durability
- Elevated plush pocket in heel for added comfort & locked in feel
- Charged Cushioning midsole converts impact into explosive speed & power on the diamond
- UA microtips technology provides comfort, more traction & less weight underfoot
- 10 strategically placed cleats on perimeter for more points of ground contact to reduce cleat pressure





**3026605**  
**UA W'S GLYDE 2.0 RM**

\$45.00 | SIZES: 5.5-12

**GIRLS: 3026607** | \$35.00 | 10K, 11K, 12K, 13K, 1-6

FIRST SHIP: C/O

- Rubber molded cleats provide optimal traction & durability on all field surfaces
- Padded collar & heel construction for ultimate step-in comfort
- Full length EVA midsole for added comfort, cushioning that evenly distributes cleat pressure underfoot

GIRLS OFFERED IN ALL COLORS



001  
BLK/BLK/WHT



100  
WHT/WHT/MSV



101  
WHT/TPK/WHT

**3026604**  
**UA W'S GLYDE 2.0 TURF**

\$85.00 | SIZES: 5.5-12

FIRST SHIP: C/O

- Textile upper with PU coating provides sneaker comfort with superior durability
- Elevated plush pocket in heel for added comfort & locked in feel
- Charged Cushioning midsole converts impact into explosive speed & power on the diamond
- Rubber nubbed outsole provides elite traction



001  
BLK/BLK/WHT



100  
WHT/WHT/MSV

# SOCKS

## 1386253 UA TEAM OVER-THE-CALF UNISEX

\$14.00 | SINGLE PAIR

SM (YOUTH 13.5K-4.5 / WOMEN'S 4-6),  
MD (YOUTH 4.5-7 / MEN'S 7-8.5 / WOMEN'S 6-10),  
LG (MEN'S 8.5-13 / WOMEN'S 10-14), XL (MEN'S 13-16)

**YOUTH: 1386254 | \$12.00**

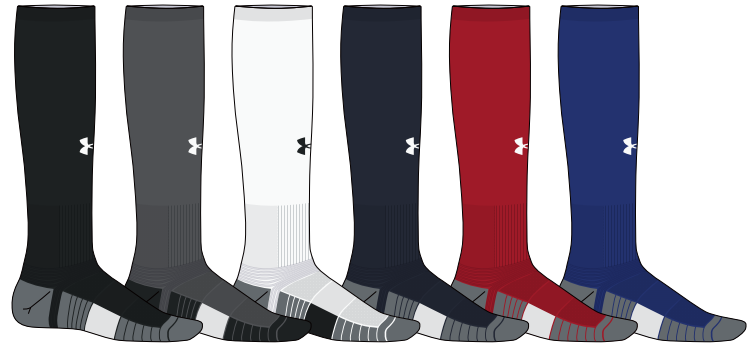
XS (10.5K-13K), SM (YOUTH 13.5K-4.5)  
MD (YOUTH 4.5-7)

FIRST SHIP: 12/20/2024

- Medium cushioning throughout foot for comfort & protection
- Mesh panels on top of foot for added breathability
- Durable material wicks sweat & dries really fast
- Anti-odor technology helps prevent odor in the sock
- Embedded arch support helps reduce foot fatigue
- Fitted heel contours around your foot for a better fit
- Left/Right specific fit

96% POLYESTER, 4% ELASTANE

YOUTH OFFERED IN ALL COLORS



001 BLK/PITCH/WHT  
040 GPH/PITCH/WHT  
100 WHT/PITCH/BLK  
410 MDN/PITCH/WHT  
600 RED/PITCH/WHT  
400 RYL/PITCH/WHT



301 GRN/PITCH/WHT  
609 MAR/PITCH/WHT  
500 PUR/PITCH/WHT  
465 HOR BLUE/PITCH/WHT  
750 SGD/PITCH/WHT  
800 TOG/PITCH/WHT



860 DKO/PITCH/WHT  
625 CRD/PITCH/WHT  
305 TKG/PITCH/WHT  
230 GRIDIRON/PITCH/WHT  
654 TPK/PITCH/WHT  
722 CTL/PITCH/WHT

**1372534**  
**UA W'S RADAR GLOVES**

\$30.00 | COMES IN PAIRS | SM-XL

**GIRLS: 1372535** | \$25.00 | 10K, 11K, 12K, 13K, 1-6

FIRST SHIP: C/O

- Synthetic palm provides durability & grip
- HeatGear® fabric with 4-way stretch for a cool, comfortable feel
- Perforated synthetic overlays add support & durability
- Finger perforations for added breathability
- Elastic cuff provides wrist support & a locked-in feel
- Internal locker tag to mark your name or number

63% POLYESTER, 31% POLYURETHANE, 3% ELASTANE, 3% NYLON

G = GIRLS OFFERING



001 BLK/BLK/WHT 002 BLK/ANF/ANF 100 WHT/WHT/HALO 101 WHT/JEL/WHT 103 WHT/CBL/WHT 400 RYL/RYL/WHT



001G BLK/ANF/ANF 100G WHT/WHT/HALO 103G WHT/CBL/WHT 104G WHT/TPK/WHT 105G WHT/TRY/WHT

**NEW**

**1384464**

**UA YARD BACKPACK 2.0**

**\$90.00**

FIRST SHIP: 12/20/2024

- UA Storm technology delivers an element-battling, highly water-resistant finish
- Large main compartment opening with mesh zipper & slip pockets
- Front zip pocket for essential item storage
- Built-in fence hook for on field organization
- Shoe compartment on front fits up to size 14 pair of cleats
- Adjustable, removable UA Strap Clip™ on shoulder to prevent duffel bag from falling off when carrying both
- Bat slip pocket for secure storage on both sides of the bag
- Water bottle pocket with elastic gusset to fit up to a 32oz bottle
- Top grab handle & sternum clip
- D-ring attachment point so you can clip anything with a carabiner on for easy transport

**STORM**



001 BLK/MSV    035 STL/MSV    410 MDN/MSV    600 RED/RYL/MGD

**1369318**

**UA UTILITY PRINT BATPACK**

**\$65.00**

FIRST SHIP: C/O

- UA Storm technology delivers an element-battling, highly water-resistant finish
- Foam padded back panel for enhanced comfort & breathability
- Soft tricot-lined front valuables pocket & a hook & loop section for batting glove storage
- Built-in fence hook for on field organization
- Airvent shoe compartment on front is embroidery compatible for customization
- Second bag strap clip for multiple ways to carry
- Large capacity holds 4 bats, cleats, batting gloves, valuables, gloves & water bottle

**STORM**



002 BLK/MGD    003 BLK/WHT

036 STL/MGD    602 RED/WHT

403 RYL/WHT    411 MDN/MGD



## 1365313 UA ACE2 T-BALL BATPACK

\$40.00

FIRST SHIP: C/O

- UA Storm technology delivers an element-battling, highly water-resistant finish
- Foam padded back panel for enhanced comfort & breathability
- Soft tricot-lined front valuables pocket & a hook & loop section for batting glove storage
- Built-in fence hook for on field organization
- Airvent shoe compartment on front is embroidery compatible for customization
- Small capacity holds 2 bats, cleats, batting gloves, valuables, gloves & water bottle
- Ideal size for ages 4-7
- Top grab handle

**STORM**



006  
BLK/MGD

412  
MDN/MGD

603  
RED/HVY

404  
RYL/HVY

004  
BLK/TPK

## 1365312 UA BASEBALL WHEELED BAG

\$150.00

FIRST SHIP: C/O

- UA Storm technology delivers an element-battling, highly water-resistant finish
- Multiple options on the go including shoulder straps, grab handles, wheels
- Big enough for even catcher's gear, with separate compartments for your helmet and cleats
- Side panel is completely removable for team or player embellishment
- Separate storage for up to 6 bats

**STORM**



003  
BLK/WHT

# ACCESSORIES

## 1380006 UA SOFTBALL TIE HB

\$12.00 | WIDTH: 2.5", LENGTH: 29"

FIRST SHIP: C/O

- Super-light HeatGear® fabric to help keep you cool, dry & light
- Material wicks sweat & dries really fast
- 4-way stretch material moves better in every direction
- Brought together in the back with a knot

77% POLYESTER, 23% ELASTANE



## UA815 OSFM AIRVENT™ PERFORMANCE VISOR

FIRST SHIP: C/O

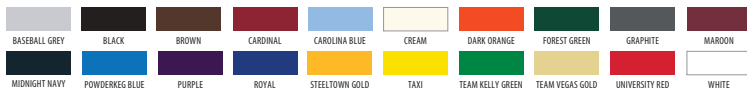
NO SET UP OR TAPE CHARGE | 18 PC MINIMUM

- UA AirVent™ Performance Fabric
- Breathable Perforation
- Moisture Absorbing and Quick Drying
- UA Performance Sweatband
- Traditional or X-Peak

UA AIRVENT™

4-6 WEEKS FROM ART APPROVAL

ONE SIZE FITS MOST



## UAB440 AIRVENT™ PERFORMANCE VISOR

\$23.00

FIRST SHIP: C/O, \*NEW COLORS: 9/1/2024

NO SET UP OR TAPE CHARGE | 12 PC MINIMUM

- Breathable Perforation
- Moisture Absorbing & Quick Drying
- Velcro Closure

UA AIRVENT™

2 WEEKS FROM ART APPROVAL (BLANKS SHIP IN 24-48 HOURS)

ONE SIZE FITS MOST



**NEW****YARD DUAL**

FIRST SHIP:C/O

- SPECIFIC SKU: UA Polarized lenses eliminate glare for clearer vision & reduced eye fatigue without color distortion
- SPECIFIC SKU: UA Tuned™ Baseball lenses provide contrast enhancement to spot & track the ball more precisely
- Fully-adjustable UA ArmourGrip nose pads have a lasered engraving for ultimate comfort & stability
- Meets ANSI Z87.1 industrial standards for high-mass & high-velocity impact protection
- Injected front & rubber non-slip temples keep the frames lightweight & firmly on your head
- TR90 frames are durable, flexible, hypoallergenic & impact-resistant
- Auto-lock stop hinge allows the temples to lock securely in place for a sturdy fit
- Water & smudge resistant lens coating
- Temple tip holes for easy paring with most lanyards
- All UA Eyewear defends against 100% of harmful UVA/B/C rays
- 3 year warranty against any material or manufacturing defects

**POLARIZED**

205644807766C

**CORE**

20564400376KA

**MIRROR**

20564409V76W1



20564463M76V8



20564484J76B3



205644NIC76PC

**TUNED BASEBALL**

205644WWK76W1

POLARIZED	DESCRIPTION	PRICE
205644807766C	MATTE BLACK FRAME WITH GRAY POLARIZED LENSES	\$120.00
CORE	DESCRIPTION	PRICE
20564400376KA	MATTE BLACK FRAME WITH GRAY LENSES	\$90.00
MIRROR	DESCRIPTION	PRICE
20564409V76W1	MATTE METALLIC DOWNPOUR GRAY FRAME WITH LIGHT BLUE MIRROR LENSES	\$90.00
20564463M76V8	MATTE TRANSPARENT PITCH GRAY FRAME WITH EMERALD MIRROR LENSES	\$90.00
20564484J76B3	SHINY BLACK FRAME WITH INFRARED MIRROR LENSES	\$90.00
205644NIC76PC	SHINY WHITE FRAME WITH BRIGHT PURPLE MIRROR LENSES	\$90.00
TUNED BASEBALL	DESCRIPTION	PRICE
205644WWK76W1	MATTE WHITE FRAME WITH BASEBALL TUNED BLUE MIRROR LENSES	\$100.00



## UA SKILLZ

### FIRST SHIP:C/O

- SPECIFIC SKU: UA Polarized lenses eliminate glare for clearer vision & reduced eye fatigue without color distortion
- SPECIFIC SKU: Mirror coating offers improved sun protection, durability & scratch resistance
- SPECIFIC SKU: UA Tuned™ Baseball lenses provide contrast enhancement to spot & track the ball more precisely
- Fully-adjustable UA ArmourGrip nose pads have a lasered engraving for ultimate comfort & stability
- Meets ANSI Z87.1 industrial standards for high-mass & high-velocity impact protection
- Injected front & temples with non-slip rubber trim keeps the frames on your head
- TR90 frames are durable, flexible, hypoallergenic & impact-resistant
- Auto-lock stop hinge allows the temples to lock securely in place for a sturdy fit
- Water- & smudge-resistant coating makes the lenses easier to clean with clearer optics
- Maximum lens coverage shields your eyes with ultimate UV A/B protection in all directions

POLARIZED	DESCRIPTION	PRICE
20662506W806C	MATTE BLACK FRAME WITH GRAY POLARIZED LENSES	\$120.00
CORE	DESCRIPTION	PRICE
20662500380KA	MATTE BLACK FRAME WITH GRAY LENSES	\$90.00
MIRROR	DESCRIPTION	PRICE
2066254WC80B3	MATTE METALLIC GUNMETAL FRAME WITH INFRARED MIRROR LENSES	\$90.00
2066257JX802B	MATTE WHITE FRAME WITH GOLD MIRROR LENSES	\$90.00
TUNED BASEBALL	DESCRIPTION	PRICE
206625HYM80W1	MATTE WHITE FRAME WITH BASEBALL TUNED BLUE MIRROR LENSES	\$100.00

### POLARIZED



20662506W806C

### CORE



20662500380KA

### MIRROR



2066254WC80B3



2066257JX802B

### TUNED BASEBALL



206625HYM80W1

**NEW****DEFINE**

FIRST SHIP:8/1/2024

- Mirror coating offers improved sun protection, durability & scratch resistance (All SKU's)
- Built-in rubber nose pads lay flush to prevent hair snagging or pulling when wearing on your head
- Injected front & temples with non-slip rubber trim keeps the frames on your head
- TR90 frames are durable, flexible, hypoallergenic & impact-resistant
- Auto-lock stop hinge allows the temples to lock securely in place for a sturdy fit
- Temple Tip Holes for easy Pairing with most lanyards
- All UA Eyewear Protects against 100% of Harmful UV A/B Rays
- 3 year warranty against any material or manufacturing defects

MIRROR	DESCRIPTION	PRICE
2071845BF99T5	MATTE IRIDESCENT PETROL FRAME WITH GREEN/BLUE MULTI-LAYER MIRROR LENSES	\$100.00
2071847JX99VP	MATTE WHITE FRAME WITH GOLD MIRROR LENSES	\$100.00
2071841JZ99Z9	MATTE TRANSPARENT LAVISH FRAME WITH GREEN MULTI-LAYER MIRROR LENSES	\$100.00
2071843H29934	SHINY BLACK FRAME WITH BRIGHT PINK MIRROR LENSES	\$100.00

**MIRROR**

2071845BF99T5

2071847JX99VP



2071841JZ99Z9

2071843H29934

**UA HUSTLE**

FIRST SHIP:C/O

- Rubber nose pads for ultimate comfort
- Injected front & temples with non-slip rubber trim keeps the frames on your head
- TR90 frames are durable, flexible, hypoallergenic & impact-resistant
- Auto-lock stop hinge allows the temples to lock securely in place for a sturdy fit
- Adjustable temples auto-form around your head for a gentle grip & custom fit
- All UA Eyewear defends against 100% of harmful UVA/B/C rays
- 3 year warranty against any material or manufacturing defects

POLARIZED	DESCRIPTION	PRICE
20409000357M9	MATTE BLACK FRAME WITH POLARIZED GREY LENSES	\$110.00
20409001T57YJ	MATTE BLACK FRAME WITH BLUE MIRROR POLARIZED LENSES	\$120.00
CORE	DESCRIPTION	PRICE
20409080757KU	SHINY BLACK FRAME WITH BLUE LENSES	\$80.00
MIRROR	DESCRIPTION	PRICE
204090RC257UZ	MATTE BLACK FRAME WITH ORANGE MIRROR LENSES	\$90.00
204090MNG57Z9	SHINY CRYSTAL FRONT, GREY HAVANA TEMPLE FRAME WITH GREEN MIRROR LENSES	\$90.00
TUNED GOLF	DESCRIPTION	PRICE
20409008A57V8	SHINY BLACK FRAME WITH GREEN-BLUE GOLF TUNED LENSES	\$100.00

**POLARIZED**

20409000357M9

20409001T57YJ

**CORE**

20409080757KU

**MIRROR**

204090RC257UZ

204090MNG57Z9

**TUNED GOLF**

20409008A57V8

## UA GAMEDAY

### FIRST SHIP:C/O

- Fully-adjustable UA ArmourGrip nose pads have a lasered engraving for ultimate comfort & stability
- Injected front & temples with non-slip rubber trim keeps the frames on your head
- TR90 frames are durable, flexible, hypoallergenic & impact-resistant
- Auto-lock stop hinge allows the temples to lock securely in place for a sturdy fit
- Water & smudge-resistant coating makes the lenses easier to clean with clearer optics
- Comes with a soft microfiber pouch to keep your eyewear clean & protected
- All UA Eyewear Protects against 100% of Harmful UV A/B Rays
- 3 Year Warranty against any material or manufacturing defects

CORE	DESCRIPTION	PRICE
20476280799KA	SHINY BLACK FRAME WITH GRAY LENS	\$80.00
MIRROR	DESCRIPTION	PRICE
2047620039950	MATTE BLACK FRAME WITH ORANGE MIRROR LENS	\$80.00
20476263M99QI	MATTE TRANSPARENT CONCRETE FRAME WITH SILVER MIRROR LENS	\$80.00
2047621IZ99Z9	MATTE TRANSPARENT LAVISH FRAME WITH GREEN/PURPLE MULTI-LAYER MIRROR LENSES	\$80.00
2047622QU99JO	MATTE KHAKI BASE FRAME WITH DARK GOLD MIRROR LENSES	\$80.00
TUNED BASEBALL	DESCRIPTION	PRICE
204762WWK99W1	MATTE WHITE FRAME WITH TUNED BLUE BASEBALL LENS	\$90.00

### CORE



20476280799KA

### MIRROR



2047620039950



20476263M99QI



2047621IZ99Z9

NEW



2047622QU99JO

NEW

### TUNED BASEBALL



204762WWK99W1

## UA YARD PRO

### FIRST SHIP:C/O

- SPECIFIC SKU: UA Tuned™ Baseball lenses provide contrast enhancement to spot & track the ball more precisely
- Fully-adjustable UA ArmourGrip nose pads have a lasered engraving for ultimate comfort & stability
- Meets ANSI Z87.1 industrial standards for high-mass & high-velocity impact protection
- Injected front & rubber non-slip temples keep the frames lightweight & firmly on your head
- TR90 frames are durable, flexible, hypoallergenic & impact-resistant
- Auto-lock stop hinge allows the temples to lock securely in place for a sturdy fit
- Water & smudge resistant lens coating
- Temple tip holes for easy paring with most lanyards
- All UA Eyewear defends against 100% of harmful UVA/B/C rays
- 3 year warranty against any material or manufacturing defects

MIRROR	DESCRIPTION	PRICE
2056430IE99V8	MATTE TRANSPARENT LIME SURGE FRAME WITH EMERALD MULTI-LAYER MIRROR LENSES	\$100.00
205643D5199W1	SHINY BLACK FRAME WITH BLUE MULTI-LAYER MIRROR LENSES	\$100.00
205643ZE399B3	MATTE MIDNIGHT NAVY FRAME WITH INFRARED MULTI-LAYER MIRROR LENSES	\$100.00
TUNED BASEBALL	DESCRIPTION	PRICE
2056436HT9950	MATTE WHITE FRAME WITH BASEBALL TUNED ORANGE MIRROR LENSES	\$110.00
205643WWK99W1	MATTE WHITE FRAME WITH BASEBALL TUNED BLUE MIRROR LENSES	\$110.00

### MIRROR



2056430IE99V8



205643D5199W1



205643ZE399B3

### TUNED BASEBALL



2056436HT9950



205643WWK99W1

## UA LEVEL UP

### FIRST SHIP:C/O

- SPECIFIC SKU: Mirror coating offers improved sun protection, durability & scratch resistance
- SPECIFIC SKU: UA Tuned™ Baseball lenses provide contrast enhancement to spot & track the ball more precisely
- Fully-adjustable UA ArmourGrip nose pads have a lasered engraving for ultimate comfort & stability
- Meets ANSI Z87.1 industrial standards for high-mass & high-velocity impact protection
- Injected front & temples with non-slip rubber trim keeps the frames on your head
- TR90 frames are durable, flexible, hypoallergenic & impact-resistant
- Auto-lock stop hinge allows the temples to lock securely in place for a sturdy fit
- Water- & smudge-resistant coating makes the lenses easier to clean with clearer optics
- Lens Vents keep air flowing across your lenses, eliminating fog & moisture build-up
- Maximum lens coverage shields your eyes with ultimate UV A/B protection in all directions

CORE	DESCRIPTION	PRICE
20662600399KA	MATTE BLACK FRAME WITH GRAY LENSES	\$100.00
MIRROR	DESCRIPTION	PRICE
2066262M2992B	MATTE BLACK FRAME WITH GOLD MIRROR LENSES	\$100.00
20662671C99B3	MATTE BLACK AND HI-VIS YELLOW FRAME WITH INFRARED MIRROR LENSES	\$100.00
206626A1W9980	MATTE PHOENIX FIRE FRAME WITH BRIGHT PINK MIRROR LENSES	\$100.00
206626W0P99V8	MATTE HI-VIS YELLOW AND MATTE CAPRI FRAME WITH EMERALD GREEN MIRROR LENSES	\$100.00
TUNED BASEBALL	DESCRIPTION	PRICE
206626WWK99W1	MATTE WHITE AND RED FRAME WITH BASEBALL TUNED BLUE MIRROR LENSES	\$110.00

### CORE



20662600399KA

### MIRROR



2066262M2992B



20662671C99B3



206626A1W9980



206626W0P99V8

### TUNED BASEBALL



206626WWK99W1



## UA ASSIST 2

FIRST SHIP:C/O

- TRITAN RENEW™ injected front & temples use a BPA-free plastic with up to 50% recycled content
- TRITAN TR18 lenses are BPA-free & impact-resistant
- Rubber non-slip nose pads for ultimate comfort
- Silicone sleeve temple tips help keep the frames in place & provide extra comfort
- Durable, flexible, hypoallergenic & impact-resistant frame
- Auto-lock stop hinge allows the temples to lock securely in place for a sturdy fit
- Comes with a soft microfiber pouch to keep your eyewear clean & protected
- All UA Eyewear defends against 100% of harmful UVA/B rays
- 3 year warranty against any material or manufacturing defects

POLARIZED	DESCRIPTION	PRICE
20529308A57M9	MATTE BLACK FRAME WITH GRAY POLARIZED LENSES	\$110.00
20529309V57JY	TRANSPARENT MOD GREY FRAME WITH DARK BLUE MIRROR POLARIZED LENSES	\$110.00
CORE	DESCRIPTION	PRICE
20529300357IR	MATTE BLACK FRAME WITH GREY LENSES	\$80.00
MIRROR	DESCRIPTION	PRICE
20529380757Z9	BLACK FRAME WITH EMERALD MIRROR LENSES	\$90.00
2052930VK57Z0	MATTE BLACK FRAME WITH BLUE CHROME MIRROR LENSES	\$90.00
20529390057DC	CRYSTAL CLEAR FRAME WITH SILVER CHROME MIRROR LENSES	\$90.00

### POLARIZED



20529308A57M9

20529309V57JY

### CORE



20529300357IR

### MIRROR



20529380757Z9

2052930VK57Z0



20529390057DC



# TRAINING ARMOURFUSE

- Brilliant, vibrant team colors permanently fused directly into textiles
- Limitless customization, all-inclusive pricing with exclusive UA designs and customized prints
- 41 different colors and 18 prints available
- 6 piece minimum order

# AF TRAINING HOODY

XS-2XL, OVERSIZE 3XL, YSM-YXL

STYLE	SIZE	PRICE
UJGSLHW (W)	XS-2XL	\$122.00
UJGSLHY (Y)	YSM-YXL	\$111.50

OVERSIZED SURCHARGE +\$5 PER SIZE  
 ADDITIONAL LENGTH OPTIONS FOUND ON PAGE 54



**SPEED**

NEW DESIGN FIRST SHIP: 6/1/2024



**SPRINT**



**SCOUT**



**UA ECLIPSE**





# AF TRAINING ½ ZIP

XS-2XL, OVERSIZE 3XL

STYLE	SIZE	PRICE
UJGHZLW (W)	XS-2XL	\$130.00

- New lightweight 4.8 oz. fabric with increased stretch for ultimate comfort

OVERSIZED SURCHARGE +\$5 PER SIZE  
 ADDITIONAL LENGTH OPTIONS FOUND ON PAGE 54



## SPEED

NEW DESIGN FIRST SHIP: 6/1/2024



## SPRINT



## SCOUT



## UA ECLIPSE






**SPEED**

NEW DESIGN FIRST SHIP: 6/1/2024


**SPEED**

NEW DESIGN FIRST SHIP: 6/1/2024

## AF TRAINING SHORTSLEEVE TEE

XS-2XL, OVERSIZE 3XL, YSM-YXL

LOOSEST	SIZE	PRICE
UJGS2W (W)	XS-2XL	\$75.00
UJGS2Y (Y)	YSM-YXL	\$71.00

- New lightweight 4.8 oz. fabric with increased stretch for ultimate comfort

 OVERSIZED SURCHARGE +\$5 PER SIZE  
 ADDITIONAL LENGTH OPTIONS FOUND ON PAGE 54

**SPRINT**

**SPRINT**

## AF SHORTSLEEVE HOODED SHOOTER

SM-2XL, OVERSIZE 3XL, YSM-YXL

STYLE	SIZE	PRICE
UJGTSSW (W)	SM-2XL	\$114.00
UJGTSSY (Y)	YSM-YXL	\$109.00

- New lightweight 4.8 oz. fabric with increased stretch for ultimate comfort

 OVERSIZED SURCHARGE +\$5 PER SIZE  
 ADDITIONAL LENGTH OPTIONS FOUND ON PAGE 54

**SCOUT**

**SCOUT**

**UA ECLIPSE**

**UA ECLIPSE**



**SPEED**

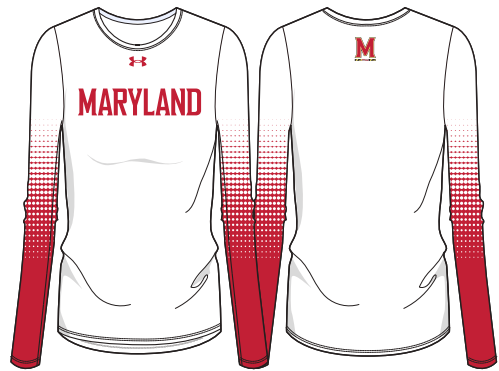
NEW DESIGN FIRST SHIP: 6/1/2024



**SPRINT**



**SCOUT**



**UA ECLIPSE**

### AF TRAINING LONGSLEEVE TEE

XS-2XL, OVERSIZE 3XL, YSM-YXL

LOOSELST	SIZE	PRICE
UJGL2W (W)	XS-2XL	\$90.00
UJGL2Y (Y)	YSM-YXL	\$86.00

• New lightweight 4.8 oz. fabric with increased stretch for ultimate comfort

OVERSIZED SURCHARGE +\$5 PER SIZE  
ADDITIONAL LENGTH OPTIONS FOUND ON PAGE 54



**NEW**
**AF TRAINING SHORTS**

FIRST SHIP: 10/25/2024 // XS-2XL, OVERSIZE 3XL, YSM-YXL

POCKETED SHORT	SIZE	PRICE
UJGS3PW (W)	XS-2XL	\$75.00
UJGS3PY (Y)	YSM-YXL	\$70.00
NON-POCKETED SHORT	SIZE	PRICE
UJGS3W (W)	XS-2XL	\$70.00
UJGS3Y (Y)	YSM-YXL	\$65.00
HEADBAND	SIZE	PRICE
UJLHBW1 (W)	OSFA	\$34.00

 5" INSEAM FOR POCKETED AND NON-POCKETED SHORT  
 OVERSIZED SURCHARGE +\$5 PER SIZE  
 ADDITIONAL LENGTH OPTIONS FOUND ON PAGE 54

**SPEED**  
 NEW DESIGN FIRST SHIP: 6/1/2024

**SPRINT**


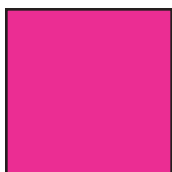
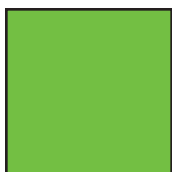
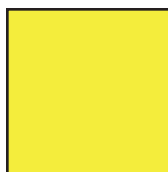
**SCOUT**

**UA ECLIPSE**

# ARMOUR FUSE

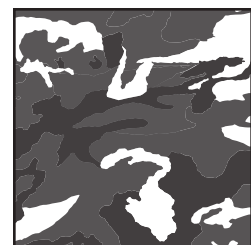
						
WHITE	BLACK	PITCH GRAY	GRAPHITE	BASEBALL GRAY	SILVER GRAY	OCEAN STORM
						
MIDNIGHT NAVY	ROYAL	POWDERKEG BLUE	ELECTRIC BLUE	CAPRI	CAROLINA BLUE	COASTAL TEAL
						
PURPLE	MAROON	CARDINAL	CRIMSON	UNIVERSITY RED	TROPIC PINK	
						
PINK	VINTAGE WHITE	TAXI	STEELTOWN GOLD	TENNESSEE ORANGE	DARK ORANGE	
						
TEXAS ORANGE	CLEVELAND BROWN	GOLD RUSH	TEAM VEGAS GOLD	GRAYSTONE	MILITARY GREEN	
						
FOREST GREEN	TEAM KELLY GREEN	MIAMI TEAL	SEA GLASS	POISON		

## FLUORESCENTS (NOT CURRENTLY AVAILABLE IN TONAL PRINTS OR ON GAMEDAY PRODUCT)

			
ORANGE FLUORESCENT	PINK FLUORESCENT	GREEN FLUORESCENT	YELLOW FLUORESCENT



Prints available in all ArmourFuse colors. (Fluorescents not currently available in tonal prints)



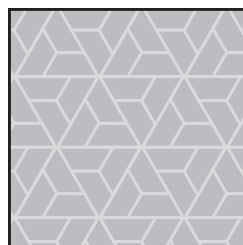
WOODLAND CAMO



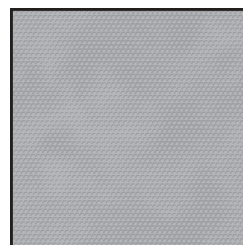
BENGAL



BLUR



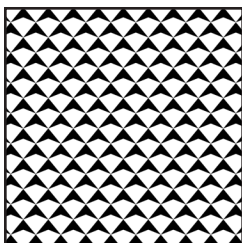
RAZOR



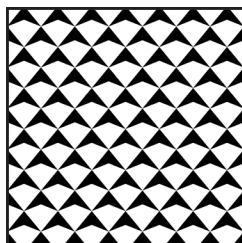
SCALE



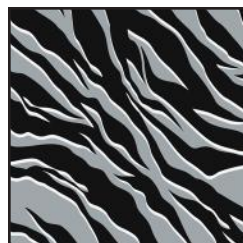
SPLINTER



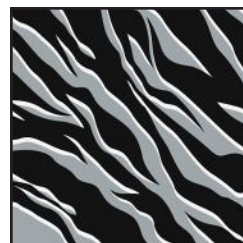
SHIELD MICRO



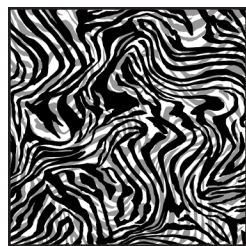
SHIELD MID



TIGER MICRO



TIGER MACRO



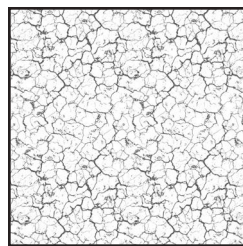
ZEBRA MICRO



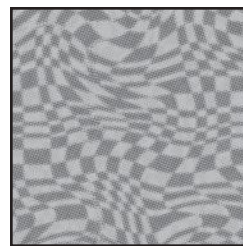
ZEBRA MACRO



ABC CAMO



CRACKLE



HAFITONE CHECKER



TIGER CAMO



FLORAL  
(Not available on Gameday)

## DESERT CAMO (LOCKED COLOR COMBINATIONS, CANNOT BE ALTERED)



DESERT  
WOODLAND CAMO

## STOCK DECORATION OPTIONS

SCREEN PRINT	ONE COLOR	TWO COLORS
Team Name	\$5.50	\$10.50
Team Mascot/Logo	\$5.50	\$10.50
Front + Back Numbers	\$12.00	\$17.00

TWILL	ONE COLOR	TWO COLORS
Team Name	\$22.00	\$27.00
Front + Back Numbers	\$27.00	\$32.00
Player Names	\$22.00	
ArmourFuse Twill Patch (Max 3"x3")	\$11.00	\$11.00

EMBROIDERY	ONE COLOR	TWO COLORS
Team Name (up to 2")	\$10.00	\$10.00

see page 54 for Embroidered Mascot/Logo pricing

### ADDITIONAL STOCK OPTIONS & NOTES

- Player Numbers Per Location = 1/2 of above "Front + Back Numbers" pricing
- Player Name Directly On Jersey Only (No Nameplates)
- ArmourFuse Twill = Twill Pricing +\$10
- Add Tail to Script Font Twill Team Name +\$10
- Add Embroidery to Twill Tail +\$10
- Non-Stock designs and lettering may require additional charge at Under Armour's discretion (call for quote)

## FONT OPTIONS

### BADGER

ABCDEFGHIJKLMNOPQRSTUVWXYZ  
0123456789

### BEAR

ABCDEFGHIJKLMNOPQRSTUVWXYZ  
0123456789

### CADET

ABCDEFGHIJKLMNOPQRSTUVWXYZ  
0123456789

### FULL BLOCK

ABCDEFGHIJKLMNOPQRSTUVWXYZ  
0123456789

### TERRAFONT

ABCDEFGHIJKLMNOPQRSTUVWXYZ  
0123456789

### PREMIER

ABCDEFGHIJKLMNOPQRSTUVWXYZ  
0123456789

### TUSCAN

ABCDEFGHIJKLMNOPQRSTUVWXYZ  
0123456789

### UNDENIABLE

ABCDEFGHIJKLMNOPQRSTUVWXYZ  
0123456789

### UA COLLEGIATE SANS

ABCDEFGHIJKLMNOPQRSTUVWXYZ  
0123456789

### UA COLLEGIATE SANS CONDENSED

ABCDEFGHIJKLMNOPQRSTUVWXYZ  
0123456789

### UA COLLEGIATE SERIF

ABCDEFGHIJKLMNOPQRSTUVWXYZ  
0123456789

### UA COLLEGIATE SERIF CONDENSED

ABCDEFGHIJKLMNOPQRSTUVWXYZ  
0123456789

### MODERN

ABCDEFGHIJKLMNOPQRSTUVWXYZ  
0123456789

### ATHLETIC SCRIPT

ABCDEFGHIJKLMNOPQRSTUVWXYZ  
abcdefghijklmnopqrstuvwxyz

### SWINGMAN

ABCDEFGHIJKLMNOPQRSTUVWXYZ  
abcdefghijklmnopqrstuvwxyz

### NOTE:

- Gameday Select Package Pricing now includes all of the above listed fonts
- Dropped fonts available for fill-in orders only

## LETTERING ARRANGEMENTS

### STRAIGHT

TEAMNAME

### BRIDGED

TEAMNAME

### ARCH

TEAMNAME





















### VERTICAL ARCH

TEAMNAME

### SCRIPT WITH TAIL

Teamname

## GAMEDAY OPTIONS

3/16" 1-COLOR PIPE					1/2" 3-COLOR BRAID			INCLUDED PIPE/BRAID	OPTIONAL PANT ALTERATIONS	LIST PRICE
					<b>1</b> <b>2</b> <b>3</b>	<b>ANY COMBO OF PIPE COLORS</b>	<b>1. Jersey Front</b>	Reduce Knicker Inseam 2" and Hem w/ Elastic	\$0.00	
							Around Neck	Increase Knicker Inseam 2" and Hem w/ Elastic	\$0.00	
							Around Placket	Increase Knicker Inseam 4" and Hem w/ Elastic*	\$15.00	
							None	Reduce Relaxed/Tapered Inseam 2" and Hem	\$0.00	
WHITE	BASEBALL GRAY	BLACK	MIDNIGHT NAVY	UNIVERSITY RED			<b>2. Jersey Sleeves</b>	Increase Relaxed/Tapered Inseam 2" and Hem	\$0.00	
ROYAL	FOREST GREEN	MAROON	PURPLE	DARK ORANGE			Sleeve Ends	Increase Relaxed/Tapered Inseam 4" and Hem*	\$15.00	
STEELTOWN GOLD	TEAM KELLY GREEN	CARDINAL	TEAM VEGAS GOLD	CAROLINA BLUE			<b>OR</b>			
CLEVELAND BROWN	TEAL	TEXAS ORANGE	SILVER GRAY	GRAPHITE			None			
							<b>3. Pants</b>			
							Down Side			
							<b>OR</b>			
							None			

OPTIONAL ARMOURFUSE™ TWILL (L X H)		LIST PRICE
Custom Font Team Name (Max. 14" x 4.25")		\$10.00
Custom Left Chest Team Logo (Max. 4" x 5")		\$15.00
Custom Sleeve Patch (Max. 4" x 4")		\$15.00
Custom Back Neck Patch (Max. 3" x 2")		\$15.00
Player Name (On Nameplate)		\$40.00
Player Name Directly on Jersey (No Nameplate)		\$30.00
Blank Nameplate		\$7.00
Add Tail to Script Font Team Name		\$20.00
Add Text to Script Font Tail		\$20.00

**Note:** Vector art must be provided for custom Armourfuse™ Twill or additional artwork charges will apply

\*Available on Men's styles only

## STOCK OPTIONS

3/16" 1-COLOR PIPE	LIST PRICE
Around Placket (UBJ316P)	\$17.00
Sleeve Ends (UBJ316S)	\$17.00
Down Side (UBP316D)	\$17.00

1/2" 3-COLOR BRAID	LIST PRICE
Around Placket (UBJ12AP)	\$17.00
Around Neck (UBJ12NB)	\$17.00
Sleeve Ends (UBJ12SE)	\$17.00
Down Sides (UBP12DS)	\$17.00

**NOTE:** Additional leadtime should be expected for orders including piping, braiding and/or hemming. Please contact a UA Sale Rep for updates.

**PIPE & BRAID AVAILABLE COLORS**

Pipe 3/16"						
	WHITE	BLACK	MIDNIGHT NAVY	UNIVERSITY RED	ROYAL	FOREST GREEN
						
	MAROON	PURPLE	DARK ORANGE	CARDINAL	TEAM VEGAS GOLD	

Braid 1/2"				
	BK/WH/BK	NA/WH/NA	SC/WH/SC	RO/WH/RO
				
	DG/WH/DG	MA/WH/MA	PU/WH/PY	OR/WH/OR
				
	CA/WH/CA	VG/WH/VG		

# ADDITIONAL LENGTH OPTIONS (ARMOURFUSE ONLY - \$10 FOR ALL -/+ OPTIONS)

## BASEBALL/SOFTBALL

TYPE	ADJUSTMENT	CODE
JERSEYS	Add 2" body length	UJX2BDY
	Add 4" body length	UJX4BDY
PANTS	Subtract 2" from inseam	UJSHTN2
	Add 2" to inseam length	UJX2INS
	Add 4" to inseam length	UJX4INS

## FOOTBALL

TYPE	ADJUSTMENT	CODE
JERSEYS	Shorten to waist length	
PANTS	Add 2" to inseam length	UJX2INS

## LACROSSE/ FIELD HOCKEY

TYPE	ADJUSTMENT	CODE
JERSEYS	Add 2" body length	UJX2BDY
SHORTS	Subtract 1" from inseam	UJSHTN1
	Subtract 2" from inseam	UJSHTN2
	Add 1" to inseam length	UJX1INS
	Add 2" to inseam length	UJX2INS
KILTS	Add 1" to inseam length	UJX1INS
	Add 2" to inseam length	UJX2INS

## BASKETBALL

TYPE	ADJUSTMENT	CODE
JERSEYS	Add 2" body length	UJX2BDY
	Add 4" body length	UJX4BDY
	Add 6" body length	UJX6BDY
SHORTS	Subtract 1" from inseam	UJSHTN1
	Add 1" to inseam length	UJX1INS
	Add 2" to inseam length	UJX2INS
	Add 3" to inseam length	UJX3INS
SHOOTING SHIRTS	Add 2" body, 1" sleeve	UJX2B1S
	Add 4" body, 2" sleeve	UJX4B2S
	Add 6" body, 3" sleeve	UJX6B3S

## SOCCER

TYPE	ADJUSTMENT	CODE
JERSEYS	Add 2" body length	UJX2BDY
SHORTS	Subtract 1" from inseam	UJSHTN1
	Subtract 2" from inseam	UJSHTN2
	Add 1" to inseam length	UJX1INS
	Add 2" to inseam length	UJX2INS

## TRACK & FIELD

TYPE	ADJUSTMENT	CODE
JERSEYS	Add 2" body length	UJX2BDY
LOOSE SHORTS*	Subtract 1" from inseam Add 1" to inseam length	UJSHTN1 UJX1INS

\*UJTS2M & UJTS2W ONLY

## TRAINING

TYPE	ADJUSTMENT	CODE
JERSEYS	Add 2" body length	UJX2BDY
	Add 4" body length	UJX4BDY
	Add 6" body length	UJX6BDY
SHORTS	Subtract 1" from inseam	UJSHTN1
	Subtract 2" from inseam	UJSHTN2
	Add 1" to inseam length	UJX1INS
	Add 2" to inseam length	UJX2INS
	Add 3" to inseam length	UJX3INS

## VOLLEYBALL

TYPE	ADJUSTMENT	CODE
JERSEYS	Add 2" body length	UJX2BDY
SHORTS	Subtract 1" from inseam	UJSHTN1
	Subtract 2" from inseam	UJSHTN2

## EMBROIDERY

### MASCOTS (STOCK ONLY) LIST PRICE

Mascot	\$11.00
Mascot with One Line	\$12.00
Mascot with Two Lines	\$13.00
American Flag	\$11.00
Small/Homeplate	\$6.00

- Prices are based upon size of designs, not the number of colors. Prices are subject to change if design exceeds specifications.
- Dimensions are maximum space - unless specifically noted best judgement will be used.
- Letter styles are available horizontal or arched.
- No digitizing charge for team names.

### DIGITIZING (STOCK AND ARMOURFUSE ONLY) LIST PRICE

Stock Designs and Lettering	\$180.00
Custom Logos	Call for Quote

- Flag size up to 2" by 3" (bigger area - call for quote)
- Minimum order charges apply for embroidery
- All designs require an additional digitizing charge, except:
  - 1) Digitized designs supplied on a disk
  - 2) Digitized design is a re-order of an existing design

## STANDARD SLEEVE PRINT STRIPES

\*OPTIONS - Code numbers listed below stripe patterns

\*Stripes may be adjusted to fit smaller garments and not measure exactly as shown.

01: 1/2" STRIPE, 1/2" SPACE, 2" STRIPE, 1/2" SPACE, 1/2" STRIPE

02: 1/2" STRIPE, 1/2" SPACE, 2" STRIPE, 1/2" SPACE, 1/2" STRIPE

05: 3/4" STRIPE, 1/4" SPACE, 3/4" STRIPE, 1/4" SPACE, 3/4" STRIPE, 1/4" SPACE, 3/4" STRIPE, 1/4" SPACE, 3/4" STRIPE

06: 2" STRIPE, 2" STRIPE

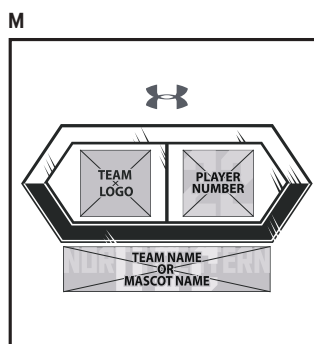
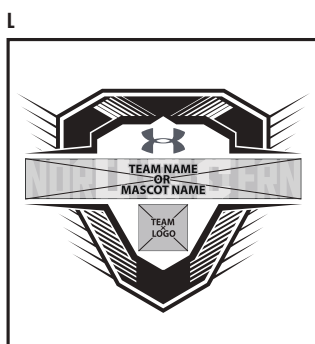
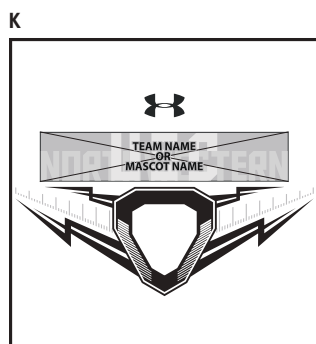
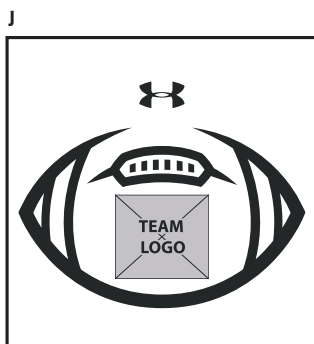
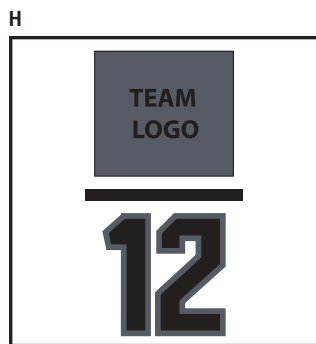
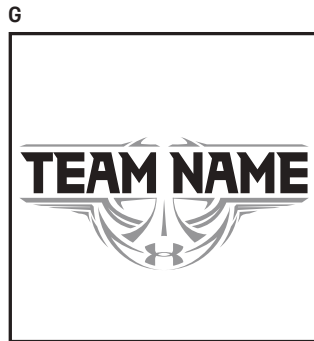
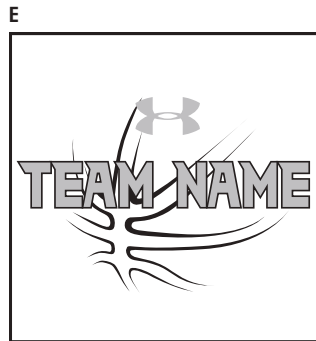
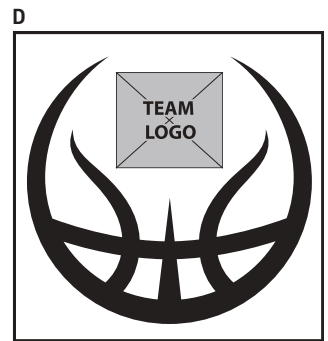
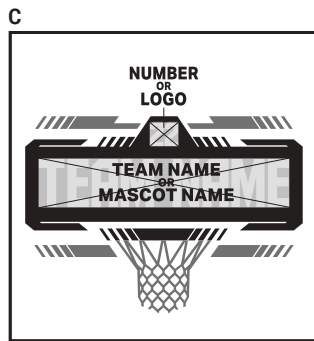
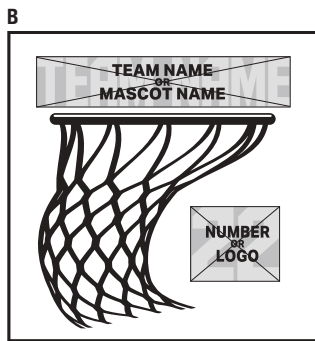
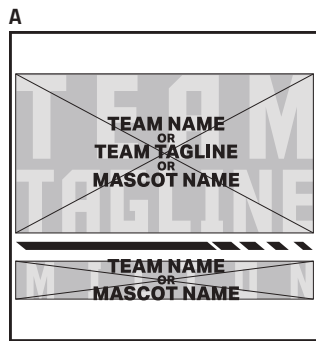
07: 1/4" STRIPE, 1" STRIPE, 1/4" STRIPE, 1" STRIPE, 1/4" STRIPE, 1" STRIPE, 1/4" STRIPE, 1" STRIPE, 1/4" STRIPE, 1" STRIPE

08: 1" STRIPE, 1" STRIPE, 1" SPACE, 1" STRIPE, 1" STRIPE

09: 1 1/2" STRIPE, 1 1/2" STRIPE, 1 1/2" STRIPE



# ARMOURFUSE® GRAPHIC OPTIONS



## UNIFORM CARE INSTRUCTIONS

To enhance the appearance and extend the life of your uniforms, Under Armour recommends that you follow these cleaning and storing procedures:

### DO NOT DRY CLEAN

### DO NOT WASH IN HOT WATER

### DO NOT USE CHLORINE BLEACH

### DO NOT USE FABRIC SOFTENER

### DO NOT WASH WHITES AND COLORS TOGETHER

### DO NOT OVERLOAD THE WASHING MACHINE

### DO NOT MACHINE DRY ON HIGH HEAT

### DO NOT LEAVE WET OR DAMP GARMENTS IN YOUR TRAVEL BAG, IN A PILE WITH OTHER CLOTHING OR IN WASHING MACHINE

- Pre wash uniform prior to use.
- Uniforms should always be laundered immediately after wearing. However, if this is not possible, rinse garments and hang individually on rust-proof hangers. (Moisture may cause color migration of acid dyes so we advise separating wet or damp uniforms.)
- Belts and any other contrasting color items should be washed separately from the garment.
- It is always advisable to test wash a single uniform according to directions before washing an entire load.
- Wash and rinse all garments in warm water (approx. 110°) with mild detergent. Remove promptly after wash cycle.
- For optimum results, hang garments (especially those with elastane) to dry. If you cannot hang dry, machine dry on the lowest setting. Turn jerseys inside out before machine drying. Remove items from dryer immediately upon completion of the cycle. (Excessive heat can cause fabric shrinkage, discoloration, and cracking and peeling of vinyl plastisol lettering inks.)
- Make sure uniforms are completely dry before storing. Store in a dry area to prevent mildew. Protect them from sunlight and fluorescent light to prevent yellowing.

**PLEASE NOTE:** Under Armour will not be responsible for uniforms that are damaged due to improper care and maintenance. Failure to follow our specified care instructions will void all guarantees.

## UNIFORM FILL-IN LIFECYCLE

LAST SHOWN IN CATALOG	LAST FILL-IN SEASON	LAST FILL-IN SHIP
FA'21	FA'24	12/15/2024
WI'21	WI'24	3/15/2025
SP'22	SP'25	6/15/2025
FA'22	FA'25	12/15/2025
WI'22	WI'25	3/15/2026
SP'23	SP'26	6/15/2026
FA'23	FA'26	12/15/2026
W'23	W'26	3/15/2027
SP'24	SP'27	6/15/2027
FA'24	FA'27	12/15/2027
WI'24	WI'27	3/15/2028
SP'25	SP'28	6/15/2028

**G** **GAMEDAY TEAM UNIFORMS**  
ORDERING INFORMATION AND CUSTOMER SERVICE:  
1-800-474-6118  
www.uacustomuniforms.com

**AF** **ARMOURFUSE™ TEAM UNIFORMS**  
ORDERING INFORMATION AND CUSTOMER SERVICE:  
1-888-871-0990  
www.underarmourteamuniforms.com

**NX** **UA NEXT**  
ORDERING INFORMATION AND CUSTOMER SERVICE:  
1-888-871-0990  
www.underarmourteamuniforms.com

**S** **STOCK TEAM UNIFORMS**  
ORDERING INFORMATION AND CUSTOMER SERVICE:  
1-888-871-0990  
www.underarmourteamuniforms.com

## ORDERING INFORMATION

### Guarantee:

The materials and workmanship of our garments are guaranteed when given fair treatment and used under normal conditions.

### Color Matching:

Scientifically, it is not possible to achieve a perfect color match from one dye lot to another. Therefore, we cannot guarantee a perfect match from order to order or from one fabric to another.

### Color Abbreviation Key:

The following abbreviations may be used when ordering merchandise.

<b>BG</b> Baseball Gray	<b>EB</b> Electric Blue	<b>PI</b> Pink	<b>SI</b> Silver Grey
<b>BK</b> Black	<b>GP</b> Graphite	<b>PK</b> Powderkeg Blue	<b>TI</b> Taxi
<b>BR</b> Brown	<b>KE</b> Team Kelly Green	<b>PO</b> Poison	<b>TE</b> Teal
<b>CA</b> Cardinal	<b>LG</b> Steeltown Gold	<b>PU</b> Purple	<b>TO</b> Texas Orange
<b>CB</b> Carolina Blue	<b>MA</b> Maroon	<b>RO</b> Royal	<b>TP</b> Tropic Pink
<b>CP</b> Capri	<b>NA</b> Midnight Navy	<b>RU</b> Gold Rush	<b>VG</b> Team Vegas Gold
<b>DG</b> Forest Green	<b>OR</b> Dark Orange	<b>SC</b> University Red	<b>WH</b> White

### Price Policy:

All catalog prices are list or suggested retail. Prices are subject to change without notice. Merchandise will be invoiced based on the prices in effect at the time the order is placed.

### Terms:

Prices are FOB shipping point. Payment is due Net 30.

### Minimum Order Charges:

A handling charge of \$10.00 will be added to orders of less than \$150.00 list. Custom and GamedaySelect fill-in minimum order is 6 units per style and color. A 100% surcharge will be applied to orders of 1-2 units, and a 50% surcharge for orders of 3-5 units.

### Lettered Orders for COD Shipment:

A 50% deposit is required on all lettered orders calling for COD shipment.

### Delivery:

Shipments will always be made by the fastest, least expensive means possible. The customer will assume any additional expense required to expedite delivery.

### Order Cancellations:

Cancellations must be received at least one day prior to the ship date. Special order garments cannot be cancelled after they have been cut. Lettered garments cannot be cancelled after they have been printed or sewn.

### Returns:

Claims must be reported to our office within 10 working days of merchandise receipt. Returns cannot be made after 30 days of the invoice date. All returns for plain merchandise must be clearly marked with an authorization number or label obtained from our office. All returns for lettered merchandise must be clearly marked "LETTERING." When requesting an authorization label, the following information is required: Reason for return, Invoice #, Style #, Color, Size/Quantity. An authorization label will then be sent to you to prepare the merchandise for return shipment. We reserve the right to repair, replace or issue credit for any merchandise returned. A 15% restocking fee and shipping charges will be charged for merchandise returned that is either not damaged or the damage is determined not to be our fault. All worn garments must be properly laundered prior to return or they will not be accepted.

All custom and custom-stock uniforms may not be returned under any circumstances if delivered properly.

### Shortages:

All claims must be made within 10 days of the invoice date.

### New Accounts:

All new accounts must be opened through your local sales representative. New accounts that do not have a Dunn and Bradstreet rating will be shipped COD until a credit line has been established.

### Samples:

Samples will be entered and billed as a regular order. Samples cannot be returned without prior approval from our office.

### Imprint Orders:

All imprint orders must be emailed, mailed or faxed in with detailed instructions on UA order forms. Imprint orders will not be taken by phone. Once garments have been lettered, the order cannot be cancelled or returned.

Under Armour will not be responsible for any items not checked for order accuracy or sizing before being sent to a printer / screener. We will not be responsible for shrinkage, defects, or damages caused during the imprinting of our garments by sources other than our own lettering department. Screenprinting sublimated uniforms can cause color migration. We do not recommend screenprinting on sublimated garments.

Photography is the property of Under Armour and is not to be used without written authorization.



# MEN'S

## COMPRESSION



Ultra-tight, second skin fit that keeps you locked in & makes you feel like you can do anything.

## FITTED



A slimmer, athletic cut that allows total mobility but eliminates the bulk of extra fabric.

## LOOSE



Fuller cut for complete comfort, total range of motion & greater breathability.

	US SIZE	CHEST (IN)	WAIST (IN)	HIP (IN)
SM	26-28	34-37	29-31	34-36
MD	30-32	37-41	31-34	36-39
LG	34-36	41-44	34-37	39-42
XL	38-40	44-48	37-41	42-46
2XL	42-44	48-52	41-45.5	46-50
3XL	46-48	52-56	45.5-50	50-54
4XL	50-52	56-60	50-54.5	54-58
5XL	54-56	60-64	54.5-59	58-62

## HOW TO MEASURE



**CHEST:** Place the tape measure under your arms at the fullest part of your chest, wrap around your body until your fingers meet and mark the measurement

**WAIST:** Measure around your natural waistline – right above your hips. Be careful not to squeeze too tight to allow a little give.

**HIPS:** With your feet together, measure around the fullest part of your hips to ensure you'll have enough room to move comfortably.

# BOYS

## FITTED



A slimmer, athletic cut that allows total mobility but eliminates the bulk of extra fabric.

## LOOSE



Fuller cut for complete comfort, total range of motion & greater breathability.

	US SIZE	CHEST (IN)	WAIST (IN)	HIP (IN)
YXS	7	25-26	23-24	26-27
YSM	8	26-27	24-25	27-28
YMD	10-12	27-29	25-27	28-31
YLG	14-16	29-32.5	27-30	31-34
YXL	18-20	32.5-35.5	30-33	34-37

## HOW TO MEASURE



**CHEST:** Place the tape measure under your arms at the fullest part of your chest, wrap around your body until your fingers meet and mark the measurement

**WAIST:** Measure around your natural waistline – right above your hips. Be careful not to squeeze too tight to allow a little give.

**HIPS:** With your feet together, measure around the fullest part of your hips to ensure you'll have enough room to move comfortably.



# WOMEN'S

## COMPRESSION



Ultra-tight, second skin fit that keeps you locked in & makes you feel like you can do anything.

## FITTED



Sits close to the skin for a streamlined fit without the squeeze of compression.

## LOOSE



Fuller, more generous cut for enhanced range of motion & an effortlessly relaxed fit.

	US SIZE	CHEST (IN)	WAIST (IN)	HIP (IN)
XS	0-2	32.5-33.5	25.5-27	34.5-36
S	4-6	33.5-36	27-29	36-38
M	8-10	36-38	29-31	38-40
L	12-14	38-41	31-34	40-43
XL	16	41-44	34-37	43-46
2XL	18	44-47	37-40	46-49
3XL	20	47-50	40-43	49-52
4XL	22	50-53	43-46	52-55

## HOW TO MEASURE



**CHEST:** Place the tape measure under your arms at the fullest part of your chest, wrap around your body until your fingers meet and mark the measurement

**WAIST:** Measure around your natural waistline – right above your hips. Be careful not to squeeze too tight to allow a little give.

**HIPS:** With your feet together, measure around the fullest part of your hips to ensure you'll have enough room to move comfortably.

# GIRLS

## FITTED



Sits close to the skin for a streamlined fit without the squeeze of compression.

## LOOSE



Fuller, more generous cut for enhanced range of motion & an effortlessly relaxed fit.

	US SIZE	CHEST (IN)	WAIST (IN)	HIP (IN)
YXS	7	25-26.5	23-24	26-28
YSM	8	26.5-27.5	24-24.5	28-29
YMD	10-12	27.5-30.5	24.5-26.5	29-32.5
YLG	14-16	30.5-34	26.5-30.5	32.5-36.5
YXL	18-20	34-36	30.5-32.5	36.5-38.5

## HOW TO MEASURE



**CHEST:** Place the tape measure under your arms at the fullest part of your chest, wrap around your body until your fingers meet and mark the measurement

**WAIST:** Measure around your natural waistline – right above your hips. Be careful not to squeeze too tight to allow a little give.

**HIPS:** With your feet together, measure around the fullest part of your hips to ensure you'll have enough room to move comfortably.

## WEST

**PAT BAUER**  
SR. REGIONAL MANAGER  
410.299.3798  
pbauer@underarmour.com  
WA // OR // MT //  
ID // AK // WY

**JEFF UTTZ**  
626.484.3496  
jeffu@underarmour.com  
CA // NV // HI // AZ // UT

**HALEY GILLMORE**  
303.562.6053  
hgillmore@underarmour.com  
East & North TX // OK // CO

**FRANK WEBER**  
618.540.3955  
fweber@underarmour.com  
IL // MO // IA // MN //  
NE // KS // ND // SD //

**BLAKE KUENZI**  
405.488.4942  
blake.kuenzi@underarmour.com  
NM // Central, South & West Texas

## EAST

**FRANK NUNAN**  
SR. REGIONAL MANAGER  
484.576.9777  
fnunan@underarmour.com  
DE // NJ // Philadelphia area

**MONTE GIBBS**  
662.801.3039  
mgibbs@underarmour.com  
TN // LA // AL //  
MS // AR // KY

**DAN WILLIAMS**  
352.672.1676  
dwilliams@underarmour.com  
NC // SC // GA // FL

**TONY DONOFRIO**  
419.356.9742  
tonydl@underarmour.com  
WI // MI // IN // OH // WV

**GARY POWERS**  
410.746.3790  
gpowers@underarmour.com  
MD // DC // VA // Eastern PA

**BOB BARTLETT**  
315.380.6505  
bobb@underarmour.com  
NY // Western PA

**JAY KELLEHER**  
443.615.0462  
jkelleher@underarmour.com  
New England

## COLLEGIATE

**TOMMY AMICO**  
951.808.0367  
tamico@underarmour.com  
WEST

**TODD LOCKLEAR**  
410.454.6572  
tlocklear@underarmour.com  
EAST

**CHRIS PORTS**  
443.220.1009  
cports@underarmour.com  
MID ATLANTIC

**BELLA GARONE**  
631.307.0009  
isabella.garone@underarmour.com  
NORTHEAST

**ALEX BRUEGGEMANN**  
410.652.4337  
abrueggemann@underarmour.com  
SOUTH

## LICENSEES

**FOUNDER SPORT GROUP**  
Stock & Armourfuse Uniforms  
www.underarmourteamuniforms.com  
888.871.0990  
UAStatus@foundersportgroup.com

**POWERS ATHLETIC**  
Custom Uniforms  
www.uacustomuniforms.com  
800.474.6118  
customerservice@powersathletic.com

**THE GAME**  
Custom Headwear  
www.uateamheadwear.com  
800.723.5656  
customerservice@2thegame.com

**USB**  
McDavid & Shock Doctor  
Water Bottles  
657.383.4438  
UA@unitedspb.com

**SAFILO**  
Eyewear  
uateamsportsorders@safilo.com



TEL: 1.888.828.1547 / B2B: ARMOURHOUSE.UNDERARMOUR.COM

### COLLEGIATE

TEAMSPO RTS COLLEGIATE / TEAMSPO RTS.COLLEGIATE@UNDERARMOUR.COM

### EAST

TEAM SPORTS SE / TEAMSPO RTSSE@UNDERARMOUR.COM  
TEAM SPORTS NE / TEAMSPO RTSNE@UNDERARMOUR.COM

### WEST

TEAM SPORTS WC / TEAMSPO RTSWC@UNDERARMOUR.COM  
TEAM SPORTS SW / TEAMSPO RTS@UNDERARMOUR.COM

**ALL TEAM SPORTS ORDERS AND QUESTIONS PLEASE USE THE FOLLOWING:**

1.888.828.1547  
Corporate Headquarters  
1020 Hull Street  
Baltimore, MD 21230

**CORPORATE OFFICE HOURS OF OPERATION**

Monday through Friday, 8:30am – 5:30pm, EST.

**UNDER ARMOUR® B2B – ONLINE ORDERING**

armourhouse.underarmour.com

- 24/7 access to check inventory and place orders
- Ability to track orders and shipments
- Priority product allocation
- Faster processing time

**UNDER ARMOUR® B2B – SUPPORT**

B2B\_support@underarmour.com

**UNDER ARMOUR® RETURN POLICY**

Under Armour® stands behind its gear and EXPECTS nothing less than perfection. If you have received a defective product, an incorrect size, or an incorrect order, please contact us immediately for a return authorization number so that we can quickly process your return and ensure your satisfaction.

ALL RETURNS MUST BE COMPLETED WITHIN 30 DAYS OF RECEIPT AND MUST BE IN REASONABLE CONDITION. ALL RETURNS MUST HAVE THE RA# CLEARLY MARKED ON THE CARTON. ALL RETURNS ARE SUBJECT TO A 15% RE-STOCKING FEE.

Should you need to return or exchange an item, you MUST include your RA#, a copy of your invoice, and an explanation in writing as to why you are returning the item. Send your return to the marked address on your pack list. If you are exchanging merchandise, you are responsible for the cost of returning the product. Original shipping costs are non-refundable. All returned merchandise must be received in new, resalable condition.

**ODH RETURNS:**

Under Armour Returns  
RA#  
7030 Tradepoint Ave  
Dock Door 69  
Sparrows Point, MD 21219

**RIALTO RETURNS:**

Under Armour Returns  
RA#  
2510 W Walnut Ave  
Rialto, CA 92376

**NASHVILLE RETURNS:**

Under Armour Returns  
RA#  
13 Athlete's Way  
Mt Juliet, TN 37122

**UNDER ARMOUR® CANCELLATION POLICY**

Any request for cancellation of an order for UA products must be made, in writing, through the customer's UA Sales Representative. A request to cancel an order must be made more than 30 days before the customer's original desired ship date. All cancellations are subject to UA approval.

**ALL PRICES SET FORTH HEREIN ARE SUBJECT TO CHANGE WITHOUT NOTICE.**

© 2024 Under Armour®. All rights reserved. All trademarks, images, photographs, logos, and graphics are owned or controlled by Under Armour®.

Confidential and business proprietary information for internal Under Armour®, Inc. use only. Reproduction is strictly prohibited.

**UNDER ARMOUR® PERFORMANCE**  
SPRING 2025