

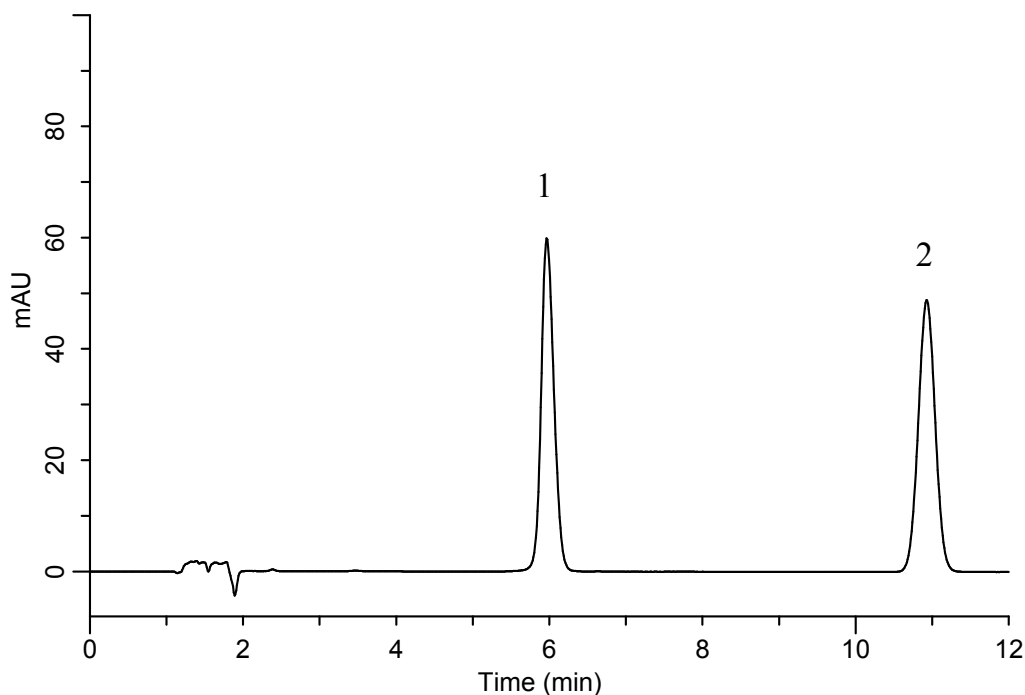
InertSearch™ for LC

Inertsil® Applications

Analysis of Silodosin

(Under the Condition of the Japanese Pharmacopoeia)

Data No. LB284-0894



Conditions

System : GL7700 HPLC system
Column : InertSustain C18
(5 μ m, 150 x 4.6 mm I.D.)
Column Cat. No. : 5020-07345
Eluent : A) CH₃CN
B) Buffer*
A/B = 73/27, v/v
Flow Rate : 1.15 mL/min
Col. Temp. : 40 °C
Detection : UV 270 nm (PD7752 PDA Detector)
Injection Vol. : 10 μ L
Sample : Standard

Analyte:

1. Silodosin 100 mg/L
2. *p*-Hydroxybenzoic acid ethyl ester 25 mg/L

Resolution (1, 2) : 14.0 (≥ 10)
RSD of the peak
area ratio of
1 to 2 (n=6) : 0.67 (≤ 1.0)

*Dissolve 3.9 g of sodium dihydrogenphosphate dihydrate in 1000 mL of water.
Adjust pH 3.4 by diluted phosphoric acid.