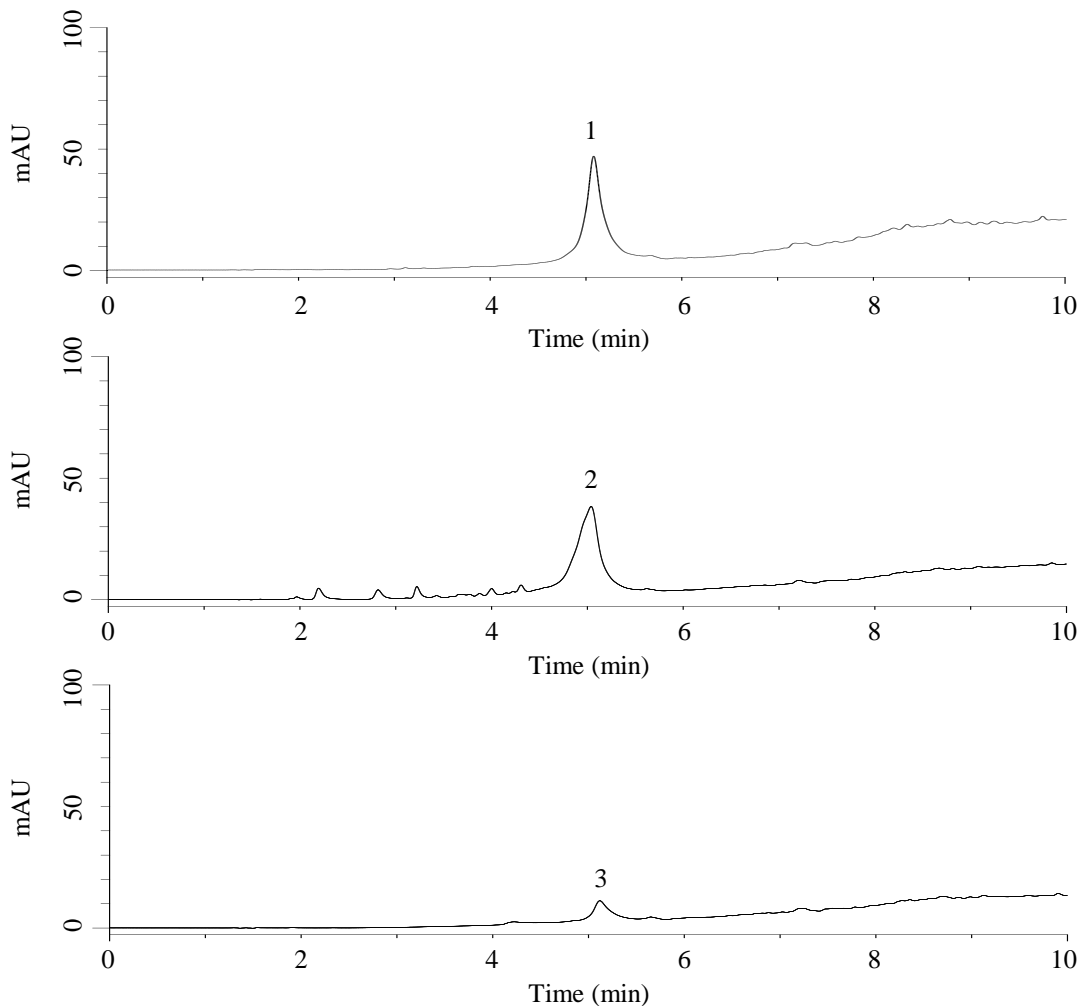


InertSearch for LC

Inertsil Applications

Analysis of Chondroitin Sulfate

Data No. LB767-0806



Conditions

Column : InertSustain AX-C18 (GL Sciences Inc.)
(3 μ m, 150 x 2.1 mm I.D., Metal-free hardware)
Column Cat. No. : 5020-91059
Eluent : A) 200 mM HCOONH₄ in CH₃OH
B) 10 mM HCOONH₄ in H₂O

Time (min)	A (Vol%)	B (Vol%)
0.0	10	90
5.0	100	0
10.0	100	0

Flow Rate : 0.3 mL/min
Col. Temp. : 40 °C
Detection : UV 254 nm
Injection Vol. : 2 μ L
Sample : Standard

Analyte:

1. Chondroitin Sulfate A Sodium Salt, from Bovine trachea
2. Chondroitin Sulfate B Sodium Salt, from Porcine Skin
3. Chondroitin Sulfate C Sodium Salt (2,000 mg/L each)