

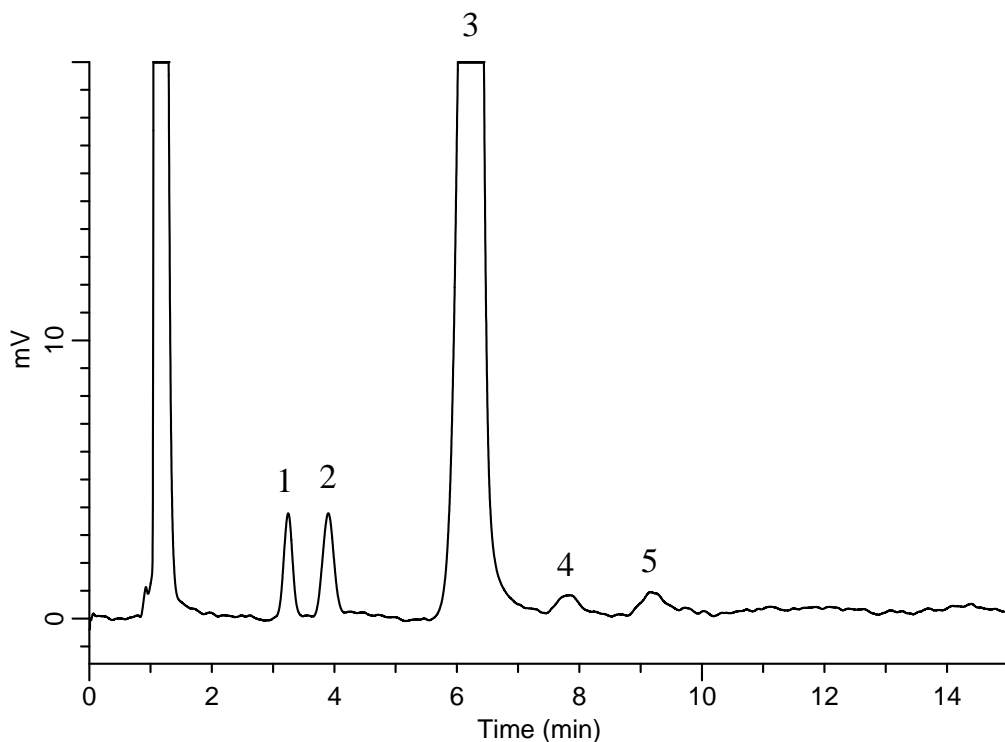
InertSearch™ for LC

Inertsil® Applications

Analysis of Sugar Spheres

(Under the Condition of USP 37-NF32)

Data No. LB287-0894



Conditions

System : GL7700 HPLC system
Column : Inertsil NH2
(5 μ m, 150 x 4.6 mm I.D.)
Column Cat. No. : 5020-05545
Eluent : A) CH₃CN
B) H₂O
A/B = 8/2, v/v
Flow Rate : 2.0 mL/min
Col. Temp. : 45 °C
Detection : RI (RI7754 RI Detector)
Injection Vol. : 15 μ L
Sample : System suitability solution

Analyte:

1. Fructose	0.6 mg/mL
2. Glucose	1.0 mg/mL
3. Sucrose	20 mg/mL
4. Maltose	0.6 mg/mL
5. Lactose	0.8 mg/mL

Resolution (1, 2)	: 2.16 (\geq 1.3)
Resolution (2, 3)	: 5.41 (\geq 1.3)
Resolution (3, 4)	: 2.56 (\geq 1.3)
Resolution (4, 5)	: 1.91 (\geq 1.3)