

2025



Resource Guide & Membership Directory



YOUR STAY, YOUR WAY

We are focused on giving you the best stay possible to help you pursue your passions through travel.



SPACES THAT WORK WITH YOU

Whatever your work or leisure trip calls for, you can find the space for it. Let us plan and execute your business or social event. Our convenient location combined with award-winning service, food and technology, create the ideal environment.



BISTRO CLASSICS

Energize your morning with Starbucks coffee and a flavorful breakfast, without leaving the hotel. The Bistro is the perfect dinner spot to wrap up a long day.



ROOM TO RECHARGE

With plush bedding, flexible workspaces, and fast and free WI-FI, our guestrooms give you the space and



302.737.0900
marriott.com/ilgud

400 David Hollowell Drive • Newark, DE 19716

Where there's a WSFS, there's a way.

WSFS Bank has been serving this region for nearly 200 years. We understand the needs, hopes and aspirations of the people and businesses who call this region home. And what's more, with our resources and capabilities we're the bank from here that can take you anywhere. So whether you want to plan for your future, buy a new home, improve the one you have, grow your business, or start a new one – WSFS is here for you. And now the question is, where do you want to go?

WSFS bank
We Stand For Service®

BRYN
MAWR
TRUST

A WSFS COMPANY



Member FDIC | NMLS #417673

INVESTMENTS: NOT A DEPOSIT. NOT FDIC INSURED. NOT INSURED BY ANY FEDERAL GOVERNMENT AGENCY.
NOT GUARANTEED BY THE BANK. MAY GO DOWN IN VALUE.

Contents

- Board of Directors4**
- Letters from DSBC Pres & CEO.....5**
- Letter from 2025 Chair6**
- Fun Facts about Delaware.....7**
- State Symbols8**
- Letter from DSBC Foundation-----9**
- Useful Phone Numbers.....11**
- US Census – State of DE.....12**
- Maps of Each County.....13**
- Highlights by County.....14**
- Starting a New Business Checklist....15**

- Delaware Agencies.....16-17**
- Membership Levels Chart.....18**
- DSBC Facts and Info.....19**
- DSBC Business 2.020**
- DE Open for Business.....20**
- Chamber by the Numbers.....21**
- DSBC Signature Events.....22**
- What They are Saying23**
- Membership Benefits.....23**
- Directory Alphabetically24-25**
- Member Directory by Category.....26-32**

About Us

The Delaware Small Business Chamber is an independent chamber of commerce supporting local small business in Delaware and the surrounding areas. We focus on businesses with 0-100 employees and larger companies that economically support our local small business community.

DSBC offers programs and opportunities for small business owners to meet and work with their peers to help start, build and maintain their companies.

We are proud to abide by a positive code of ethics, even if it means turning down members. We are selective, approving only the members who belong to or support the backbone of the future – small business.

The Delaware Small Business Chamber is a 501(c)(6) exempt organization.

Mission Statement

The Delaware Small Business Chamber helps companies and individuals in the business community connect, grow and thrive through business education, events and programs, helping fill empty commercial spaces and being a voice when needed.

Vision 2020 - 2025

The Delaware Small Business Chamber, as an independent chamber of commerce, supports small business within the State of Delaware and the surrounding business communities with a focus on companies with 0 to 100 employees and any business that economically supports them. With statewide programs and events, we aim to help make Delaware small business friendly and improve the business climate and quality of life.

Publication designed by Delaware Small Business Chamber 700 Capitol Trail #11F Newark DE 19711

302-492-2120 www.dsbchamber.com

We are an independent Delaware chamber of commerce supporting small businesses throughout the State of Delaware and the surrounding business communities. Our focus is on businesses with 0 to 100 employees and any business that economically supports our local small business community.

2025 Board of Directors & Staff

Executive Board



Bob Older
President/Founder



Melissa Woolman
Chair
Choice Insurance



Nicole Hammond
Vice-Chair
CAN Management



Tracy Feinsilver
Secretary/Treasurer
WSFS



Christine Menser
Ex-Officio
FCCB

Directors



Todd Wilson
Dover Federal CU



Carla Guzzi
Bing's Bakery



Steff DiMartine



Kathleen Wood
Delaware Hospice



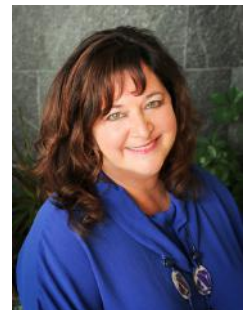
David Wilderman
Wilderman Physical
Therapy



Wanda Guyton
Coffee Rendezbrew



Dylan Hannum
Birdie's Links &
Drinks



Kristin Donovan
Aging in Place
Senior Care Services

Staff



Deanna Wasmund
Director of Membership
Development



Dear Small Business Owners and Community Supporters,

As the CEO, President, and founder of the Delaware Small Business Chamber, I want to extend my warmest greetings to each of you.

Can you believe we are now a teenager?

As we step into 2025, I am excited to share some of the new and innovative programs we have planned to support our small business community this year. Our chamber is dedicated to fostering connections, providing resources, and creating opportunities for growth.

In 2025, we are thrilled to introduce several exciting initiatives designed to engage our members and the wider community. These events will include the new DSBC Supper Club; Christmas in July; The Paddle Auction and The Balloon Pop Lunch Event; the 150 Envelope Fundraiser; FunFest - adding the Zero Proof Fiesta with the Taco Competition other activities and the new Health & Wellness Showcase to name a few.

I invite all our members and those who have yet to join the Delaware Small Business Chamber to participate in these events and support our local community. Each program is designed not only to enhance your business visibility but also to build lasting relationships within our vibrant network. Membership in the Delaware Small Business Chamber is vital for the success of our community. Our collective strength lies in our unity and collaboration; together, we can create a thriving environment for small businesses to flourish.

Let's make 2025 a year of growth, celebration, and connection. I encourage you to join us in our upcoming events and to share your experiences and ideas. Together, we can drive positive change in our community. Thank you for your continued support!

Warm regards,

Bob Older
CEO/President & Founder
Delaware Small Business Chamber





From the 2025 Chair

Dear DSBC Members and Friends,

As the incoming Chairperson of the Delaware Small Business Chamber for 2025, I am excited to reach out to each of you as we kick off a new year filled with opportunities and potential for growth.

My name is Melissa Woolman, and I am honored to serve in this role while also leading the Personal Lines Team for Choice Insurance Agency in Delaware.

At DSBC, our mission revolves around supporting and advocating for our small businesses. As we look forward to 2025, I want to encourage all our members and prospects to actively engage with the chamber, participate in our events, and take full advantage of the resources we offer. Together, we can create a strong network that fosters collaboration and drives success for small businesses across Delaware and the surrounding communities.

For those who haven't yet joined our chamber, I invite you to attend one of our upcoming events. Experience firsthand what makes the Delaware Small Business Chamber stand out as a vibrant statewide chamber of commerce. We offer a unique blend of networking opportunities, educational workshops, and resources designed specifically for small business owners. By connecting with like-minded individuals and sharing experiences, you'll find a supportive community committed to your success.

Let's make 2025 a year of prosperity and growth for our small businesses! Together, we can overcome challenges, seize opportunities, and ensure that our local economies thrive.

I look forward to meeting many of you at our events, and I encourage you to share your insights and ideas as we work collaboratively towards our common goals.

Thank you for being a vital part of our chamber, and let's make this year remarkable together!

Warm regards,

Melissa Woolman
Chairperson
Delaware Small Business Chamber

The logo features the text "FUN FACTS" in large, bold, blue letters at the top. Below it, "ABOUT THE STATE OF" is written in smaller blue letters, flanked by two horizontal lines. At the bottom, "DELAWARE" is written in the largest, bold, blue letters. The text is set against a background of a stylized Delaware coastline with a yellow sun, a blue lighthouse, and a blue body of water. The entire logo is framed by a yellow horizontal bar at the top and bottom.

FUN FACTS

ABOUT THE STATE OF

DELAWARE

First State: Delaware holds the distinction of being the first state to ratify the U.S. Constitution on December 7, 1787. This earned it the nickname "The First State."

Small Size, Big Heart: Delaware is the second smallest state in the U.S., covering approximately 1,949 square miles. Despite its size, it packs a punch with diverse attractions ranging from beaches to historical sites.

Tax Haven: Delaware is known as a business-friendly state, offering numerous tax advantages. There is no sales tax, making it a popular destination for shoppers and business incorporations, with over a million companies registered here.

Home of the Blue Hen: The state bird of Delaware is the Delaware Blue Hen, recognized for its unique blue color and fighting spirit. The Hen even served as a mascot for Delaware military regiments during the Revolutionary War.

Famous Beaches: Delaware boasts some of the most beautiful beaches on the East Coast, including Rehoboth Beach and Dewey Beach. These popular vacation spots are known for their boardwalks, fishing, and nightlife.

Historical Landmarks: Delaware is rich in history, featuring many landmarks such as the Old State House, where the Delaware Assembly met until 1931, and the New Castle Court House, which dates back to 1732.

Home to DuPont: The DuPont Company, founded in 1802, is one of the oldest and largest chemical companies in the world and has played a significant role in Delaware's economy and innovation.

Arts and Culture: The state also has a thriving arts scene. The Delaware Art Museum houses an impressive collection of American art and illustration, while the Grand Opera House and DSBC Member The Candlelight Theatre hosts numerous performances throughout the year.

Proud Sports Tradition: Delaware sports fans are passionate, especially about college sports. The University of Delaware's Blue Hens football team has a strong following and has won multiple national championships.

The Delaware River and Bay: This important waterway provides vital transportation and trade routes. It also offers recreational opportunities such as fishing, kayaking, and boating, attracting many outdoor enthusiasts.

Wedding Destination: With its stunning landscapes and charming small towns, Delaware is a popular destination for weddings. The state is home to many beautiful venues, including vineyards and coastal resorts.

Culinary Treasures: Delaware is famous for its seafood, particularly blue crabs and scrapple (especially made by DSBC Member RAPA Scrapple, celebrating 100 years in 2026). We celebrate a mix of coastal and traditional flavors.

The Dover Motor Speedway: Also known as the "Monster Mile," this NASCAR track is one of the most recognizable in the sport and hosts major racing events throughout the year.

Diverse Ecosystems: Delaware features diverse ecosystems, from sandy beaches & wetlands to forests and rolling hills. The state is home to numerous parks and wildlife refuges, promoting outdoor recreational activities.

Year-round Events: Delaware hosts various festivals throughout the year, celebrating everything from the state's seafood to its artistic talent. Notable events include DSBC's FunFest with Taco Competition and Zero Proof Fiesta, held the 2nd Saturday each September, among many others.

In conclusion, Delaware may be small, but it is packed with unique features, rich history, and vibrant culture that make it a fascinating state to explore and enjoy. Whether you are a resident or a visitor, there is always something to discover in "The First State."



State Symbols

Beverage: Milk

Colors: Buff and Colonial Blue

Fossil: Belemnite

Insect: Lady Bug

Song: "Our Delaware"

Bird: Delaware Blue Hen

Fish: Weakfish

Fruit: Strawberry

Marine Animal: Horseshoe Crab

Tree: American Holly

Tall Ship: The Kalmar Nyckel

Flower: Peach Blossom

Herb: Sweet Goldenrod

Macroinvertebrate: Stonefly

Wildlife Animal: Gray Fox



DSBC *Foundation*

Dear Members and Supporters of the Delaware Small Business Chamber,

We are excited to introduce ourselves as the new co-chairs of the recently formed DSBC Foundation (a 501C3 organization), Casey Fitzgerald and Michael Kelly. Our foundation represents a significant step forward in our commitment to supporting small businesses in Delaware, and we are eager to share our vision with you.

The primary focus of the DSBC Foundation is to provide grants ranging from \$1,000 to \$1,700 to business owners, specifically aimed at assisting new businesses in occupying vacant storefronts and facilitating the expansion of younger businesses. We recognize that many of the commercial areas we are targeting have numerous empty stores, particularly in economically depressed and high-density urban regions that are home to disadvantaged communities. By addressing these challenges, we aim to fill these vacant spaces with vibrant enterprises that will benefit not just the business owners, but the surrounding neighborhoods as well.

In addition to direct support for new businesses, a portion of the award money will be allocated to create training and employment opportunities for unemployed or underemployed residents in these areas. We believe that by investing in the people of our community, we can foster a cycle of employment that leads to sustainable economic gains.

We are proud to collaborate closely with the Delaware Small Business Chamber to create events and programs to help us raise money to be able to support as many small business as possible each year. Our foundation is dedicated to supporting these individuals through partnerships with various business entities and individuals in raising money. Donations will be appreciated.

It is important to note that under our leadership, nearly 100% of the funds raised will be directed toward these impactful programs. We are committed to maintaining high levels of funding for our initiatives, ensuring that we can provide the maximum benefit to our community while we build our foundation.

Together, we can make a tangible difference in our neighborhoods by fostering entrepreneurship, creating jobs, and revitalizing our commercial areas. We invite you to join us on this journey and support the DSBC Foundation as we work towards a brighter future for all Delawareans.

Thank you for your continued dedication to our mission.

Sincerely,

Casey Fitzgerald
Co-Chair



Michael Kelly
Co-Chair



Proud to be a
member of the



Delaware Small
Business Chamber

Useful Phone Numbers

- EMERGENCIES..... 911
- Child Abuse Reporting Hotline 800-292-9582
- Delaware Anti-Terrorism Hotline00-FORCE12
- Delaware Business License Dept302-577-8778
- Delaware Gambling Hotline 888-850-8888
- Division of Corporations302-739-3073
- Division of Revenue -
- Gross Receipts & Withholding 302-577-8205
- Division of Revenue -
- Corporate Tax Refunds & Returns .302-577-8781
- Insurance Department 302-259-7552
- NCC Executive Office 302-395-5101
- Suicide Prevention Lifeline 800-652-2929 / 988
- Bureau of Vital Statistics 302-283-7130
- Consumer Protection Agency 302-577-8600
- Delaware Attorney General 302-577-8500
- Delaware Crime Stoppers 800-TIP-3333
- Department of Labor Hotline 302-761-6576
- Division of Motor Vehicles -
- New Castle 302-326-5000
- Dover 302-744-2500
- Georgetown 302-853-1000
- Domestic Violence Hotline 302-762-6110
- Kent County Administrator 302-744-2305
- Register of Wills 302-395-7800
- Sussex County Admin 302-855-7742

Cleaning Service

- Regular cleans
- Deep cleans
- Pre and post sale
- Move in move out
- Oven and Fridge
- Spring cleans
- Office clean

Elinor's Maid

Elinorsmaid@gmail.com

(302) 416-0399

Powered by:

Presented by:

DSBC GIFT CARD

SEND A DIGITAL GIFT CARD TO FRIENDS, FAMILY, CO-WORKERS & MORE!

Valid at these participating locations:
app.yiftee.com/gift-card/delaware-small-business-chamber/locations

Questions: support@yiftee.com

Purchase Here!

U.S. Census Bureau

Delaware Business Numbers & Demographics

- in 2021, Delaware had 93,686 small businesses 98.5 percent of Delaware's businesses
- In 2022, small businesses made up 56% of the DE's workforce, & generated \$13.8 billion in wages
- Total employment, 2018 405,809
- Total annual payroll, 2018 (\$1,000) 23,045,652
- Total employment, percent change, 2017-2018 1.3%
- Total non-employer establishments, 2018 68,623
- All firms, 2022 73,918
- Men-owned firms, 2018 46,355
- Women owned 42.2 percent of businesses in 2022
- Minority-owned firms, 2018 19,830
- Non-minority-owned firms, 2018 64,091
- in 2022, Veterans owned 8.5 percent of businesses.
- Non-veteran-owned firms, 2018 73,425
- Delaware small business employment grew by 28.2 percent between 1995 and 2019, which exceeded the national small business employment growth rate

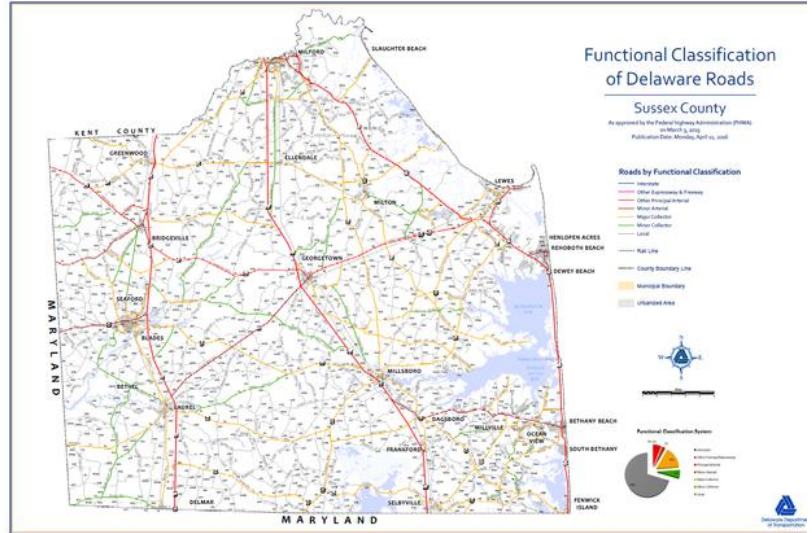
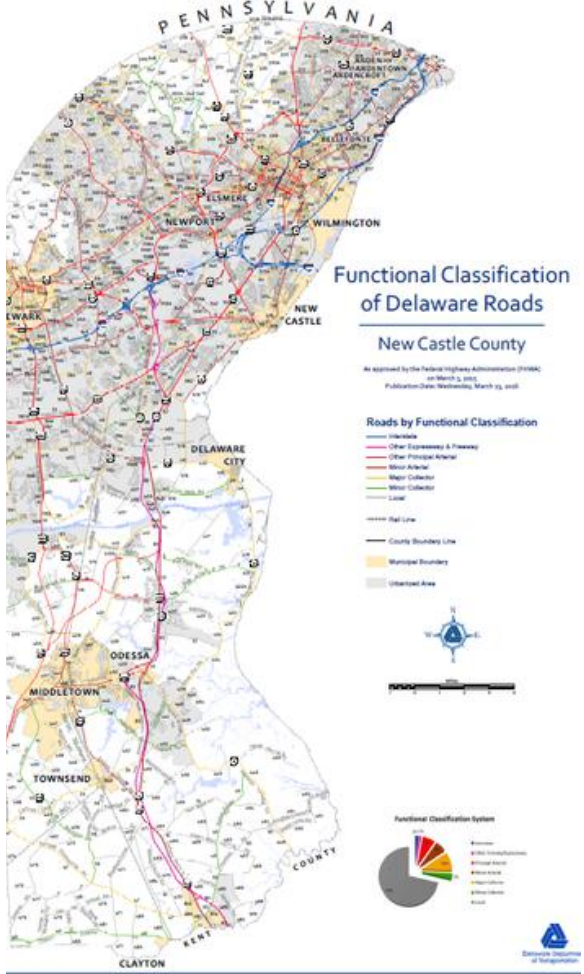


Source SBA Office of Advocacy

218 W MARKET STREET, WILMINGTON, DE
ilovedomspizza.com

Eat In ~ Take Out ~ Private Event Space
Customized menus for private parties
(302) 998-7154

DE Maps



Local Real Estate Guidance. Friendly, Expert Service.

Let's find your happy place!
for the holidays and beyond

Karen Burke,
REALTOR®



Lic. in DE, PA, & MD

cell 302.540.4071

direct 302.234.6007

office 302.239.3000

email kburke@psre.com



home search, market info, & more! karenjburke.com

Highlights by County

Delaware consists of three counties, each with a distinct flavor that contributes to the State's versatile community and business landscape.

New Castle County:

New Castle County is the northernmost of Delaware's three counties and is the most populous, with a population of 570,719 as of the 2020 census. This represents nearly 60% of the state's total population of 989,948. The county seat is Wilmington, the largest city in Delaware, known for its vibrant culture and economic activity.

The county is home to many popular attractions that draw visitors from near and far. Highlights include the Newark Reservoir, perfect for outdoor activities, and renowned cultural sites like the Hagley Museum, which showcases the history of American industry, and Winterthur Museum, Garden, and Library, famous for its extensive collection of decorative arts and beautiful gardens.

New Castle County is divided into eleven "hundreds", which include Brandywine, Christiana, Wilmington (which functions as its own hundred), Mill Creek, White Clay Creek, Pencader, New Castle, Red Lion, St. Georges, Appoquinimink, and Blackbird. Each hundred contributes to the county's rich tapestry of communities, offering a mix of suburban living, historical landmarks, and recreational opportunities, making it a dynamic place to live and visit.

Kent County:

Located in the central part of Delaware, Kent County is the state's least populous county, with a population of 181,851 as of the 2020 census. The county seat, Dover, is also the state capital and is named after Kent County in England.

Kent County is home to a vibrant Amish community to the west of Dover, consisting of nine church districts and about 1,650 residents. The Amish settled here in 1915, offering traditional goods such as homemade food, handcrafted furniture, quilts, and artisanal crafts.

The county features Delaware's Quaint Villages, including charming towns like Dover, Smyrna, Bowers Beach, Harrington, Camden, and Milford, each showcasing its own unique character and history.

Kent County beautifully combines scenic landscapes, cultural richness, and historical significance.

Sussex County:

Sussex County, positioned in the southern region of Delaware, is the state's largest county by land area, covering an impressive 938 square miles, with Georgetown serving as the county seat. The history of Sussex County is rooted in early exploration and settlement. The first European presence in Delaware was established by the Dutch in 1631, near what is now Lewes on the picturesque Atlantic Coast.

Sussex County wasn't officially organized until 1683, under English colonial governance. This vibrant county was home to Zwaanendael, Delaware's inaugural European settlement—a Dutch trading post situated in present-day Lewes. On June 3, 1631, Dutch captain David Pietersen de Vries landed on these shores to create a whaling colony, marking a significant moment in mid-Atlantic history as part of the exploration and exploitation of the New World.

The rich history and diverse landscape continue to shape Sussex County's identity today.

Starting A New Business Checklist

Form a Business Entity: <https://corp.delaware.gov/howtoform/>

Incorporation Information: <https://corp.delaware.gov/>

Get a Business License: State of Delaware: <https://onestop.delaware.gov/osbripublic>

For information on all countries visit: <https://delaware.gov/topics/municipalities.shtml>

Please note: If you are doing business in any of the following incorporated towns, you may need to contact them for additional business license information.

New Castle County

Arden Ardencroft Ardentown Bellefonte Delaware City Elsmere Middletown New Castle Newark
Newport Odessa Townsend Wilmington

Kent County

Bowers Beach Camden Cheswold Clayton Dover Farmington Felton Frederica Harrington Hartly
Houston Kenton Leipsic Little Creek Magnolia Milford Smyrna Viola Woodside Wyoming

Sussex County

Bethany Beach Bethel Blades Bridgeville Dagsboro Delmar Dewey Beach Ellendale Fenwick Island
Frankford Georgetown Greenwood Henlopen Acres Laurel Lewes Millsboro Millville Milton

Ocean View Rehoboth Beach Seaford Selbyville Slaughter Beach South Bethany

Buying or Selling?



Mike McGavisk
YOUR REAL ESTATE PRO

Book your consultation today!

302-838-7229 | 302-530-1553

ADMIN@YOURROADHOME.COM

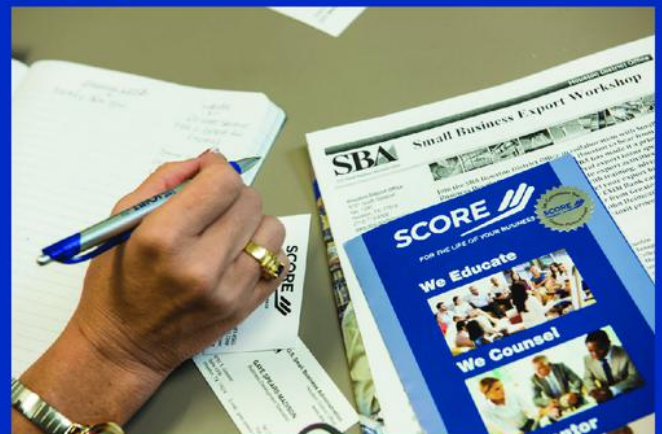


SCORE 

Delaware

FOR **50+**
YEARS

Providing Mentoring and Subject Matter Expertise
to Entrepreneurs and Business Owners



**Need help starting or growing your business?
SCORE provides**

Free Mentoring + Workshops

Business Plans | Papers and Documentation | Marketing | Finance
Ready to become a Volunteer | Client | Workshop attendee

Visit SCORE.ORG/Delaware

Contact us 302-661-2366 contact0042@scorevolunteer.org
SCORE is a 501(c)(3) non-profit organization



Delaware Agencies

Delaware Division Of Small Business

Business.Delaware.gov

The division of Small Business is focusing on this key part of the community like as part of a reinvented and reinvigorated approach to the state's economic development. The division is a champion for Delaware small businesses and to help you take your company to the next level

Delaware Small Business Development Center

DelawareSBDC.org

The Small Business Development Centers (DSBDC) will answer your questions about managing a small business and provide information about small business issues. The DSBDC provides information, training, and free, one on one counseling for small business owners and those interested in starting a business. The SBDC can obtain market feasibility study for your business. It contains data such as a detailed demographic profile of your market area and a great amount of other information.

Delaware Manufacturing Extension Program

DEMEP.org

The Delaware Manufacturing Extension Partnership (DEMEP) is a non-profit resource organization offering affordable, confidential technical and business solutions to the small and medium sized manufacturers of Delaware. DEMEP provides sound technical field agents and consultants who specialize in solving problems that are unique to manufacturers.

Service Core Of Retired Executives (SCORE)

SCOREDelaware.com

SCORE provides one on one counseling for people thinking about starting a small business and for current business owners from retired executive volunteers. The organization also offers low cost business skill workshops throughout the state.

Delaware Innovation Fund

DelawareInnovationFund.com

The Delaware Innovation Fund is a seed in early stage venture capital firm established as a public/private sector initiative to assist Delaware companies in the critical pre-seed and early stage of formation. The fund provides financial and technical assistance to Delaware-area based businesses which have the potential to launch innovative products and processes into national markets, to create new jobs, and make a significant contribution to the economic diversity and the technology base of Delaware's communities.

U.S. Small Business Administration

SBA.gov

The mission of the U.S. Small Business Administration Delaware District Office is to aid, counsel, assist, and advocate the interests of the state's small business community, utilizing various financial, investment, procurement, and business development programs and resources.

Office Of Supplier Diversity

GSS.OMB.Delaware.gov/OSD

The Office of Supplier Diversity (OSD) assist diverse suppliers: minority, women, veteran, service disabled veteran, and individuals with disabilities owned businesses and Small Business Focus (SBF) program vendors in competing for the provision of commodities, services, and construction to State departments, agencies, authorities, school districts, higher education institutions, and all businesses. Business networking, development, and opportunity events and fliers are shared on listserv to receive emails with various business development and opportunities as shared with the community. You may self register by typing the following URL address into your internet browser: <http://directory.osd.gss.omb.delaware.gov/self-registration.shtml>

DNREC

DNREC.Delaware.gov

DNREC's mission is to protect and manage the state's vital natural resources, protect public health and safety, provide quality outdoor recreation and to serve and educate the citizens of the First State about the wise use, conservation, and enhancement of Delaware's environment. The Small Business Assistance Program (SBAP) within DNREC was created through the Clean Air Act Amendments of 1990 and is a free service available to all new and existing small businesses located in the State of Delaware.

The SBAP can:-Serve as initial contact with DEREK; answer your environmental questions or refer you to the right person -Provide specific information for your industry detailing how to comply with environmental regulations -Provide guidance for completing permit applications, forms, and other required paperwork - Discuss compliance issues in a confidential manner; help resolve permitting and compliance disputes

Delaware Small Business Chamber

DSBChamber.com

We are your true resource to help start, build, and maintain small to medium-sized businesses in Delaware and the surrounding region. While not all our members are small companies, all members do business with local small businesses.

Our Business 2.0 program is helping people get started in their own business and those looking to potentially expand an existing business.

**Check out DSBC's
website with a variety of new digital programs that highlight our members.
Look for their coupons, Trade Show booths and more.**

**Look at our enhanced member directory
www.dsbchamber.com**

ADVERTISING, SPONSORSHIP, ATTENDANCE COSTS BUILT INTO MOST MEMBERSHIP LEVELS

USE CHAMBER DOLLARS TO PAY FOR EXTRA COSTS

MEMBER LEVEL

OPPORTUNITIES	Member >25 emp	Executive >50 emp	Entrepreneur	President	Chairman
FREE Event Attendees	1	2	3	4	5
Chamber Dollars		\$250	\$500	\$1,900	\$3,400
Online Event Promos		✓	✓	✓	✓
Meeting Space Rental	*fee	*fee	FREE	FREE	FREE
Digital Buildout (DSBC Website)	\$75	D\$BC	D\$BC	✓	✓
Custom Sponsor Plaque				✓	✓
Logo Displayed at Events	<i>Sponsorship Required</i>	<i>Sponsorship Required</i>	<i>Sponsorship Required</i>	✓	✓
Press Release	\$50	D\$BC	D\$BC	✓	✓
Category Listings	1	2	3	4	5
Ad in Resource Guide	*Reg Rate	*Reg Rate	D\$BC	D\$BC	D\$BC
Newsletter Promo			✓	✓	✓
After Hrs/Open House		✓	✓	✓	✓
Awards Brunch Ticket	*Reg Rate	D\$BC	D\$BC	D\$BC	2
Awards Brunch Ad	*Reg Rate	*Reg Rate	D\$BC	D\$BC	✓
Funfest Booth/Sponsor	*Reg Rate	*Reg Rate	D\$BC	D\$BC	✓
Mixer Sponsor	\$250	\$250	1 Incl	2 Incl	3 Incl
Awards Brunch Sponsor	*Reg Rate	*Reg Rate	<i>Discounted Rate</i>	D\$BC	D\$BC
Speaker Series Sponsor	*Reg Rate	*Reg Rate	<i>Discounted Rate</i>	D\$BC	D\$BC
Beefsteak & Beyond Sponsor	*Reg Rate	*Reg Rate	<i>Discounted Rate</i>	D\$BC	D\$BC
Total Value	\$1,700	\$3,000	\$4,500	\$8,500	\$13,250
Annual Membership	\$325	\$500	\$1,200	\$2,500	\$4,000
Monthly Membership	\$30	\$50	\$120	\$250	\$400

Non-profit Membership \$250 \$25/Month
Individual - Not affiliated with a company \$150
Student Membership* \$75

D\$BC = Purchase with Chamber Dollars

✓ = Included with Membership

Ask about our exclusive Blue Diamond Membership.

Delaware Small Business Chamber

Facts & Information

All-Member Ambassador Group:

Most chambers have Ambassador groups that consist of Chamber volunteers who serve as the member relations team for the Chamber. These volunteers call on existing members throughout the year. Ambassadors also represent the Chamber at grand openings, ribbon cuttings, and annual events. The Ambassadors play active roles in Chamber activities. The Delaware Small Business Chamber believes that ALL members should be part of that process & is the only chamber with an all-member ambassador group. Come be apart of ours.

Membership based on value and not just the size of a business:

Instead of offering entrepreneurs a cookie-cutter package, we have created custom tiers to meet the needs of every business type. You can invest in a level that will provide the highest return on investment (ROI) for your membership and participation with the DSBC. Each level has a value of 3-6 times investment.

More inclusions than any other Chamber:

With over 130 total events yearly throughout the State of Delaware and the surrounding area, the DSBC on average, hosts: 2 mixers a month; and 2 seminars each month; Members may attend one 6-Top Mingle in New Castle and 1 in Sussex/Kent County each month allowing members to attend up to 72 events or more each year for FREE as part of the low membership rates. The Delaware Small Business Chamber also has special programs and series and a variety of signature events for a nominal fee, including several B2B and B2C opportunities. The DSBC's digital program for members is unparalleled by any organization in Delaware.

Code of Ethics:

We are proud to abide by a positive code of ethics, even if it means turning down members. We are selective, approving only the members who belong to or support the backbone of the future - small business. The Delaware Small Business Chamber is an independent chamber of commerce supporting local small business in Delaware and the surrounding areas. We focus on businesses with 0-100 employees and larger companies that economically support our local small business community.

Check out new DSBC events for 2025

- Supper Club
- Behind the Curtain
- Yes, Chef with Jennifer Behm-Lazzrini
- 150 Envelopes Fundraiser
- Christmas in July Holiday Boat show
- Zero Proof Fiesta at FunFest
- Health & Wellness Showcase
- Chamber Trips

Check out the DSBC website's Calendar of Events for all details and to register for these and other great events.

The Delaware Small Business Chamber is OPEN FOR BUSINESS everyday to help you get started in business. Call us and let us know how we can help you (302) 482-2120.

The DSBC "Circle of Influence" includes categories of members who can help you in many aspects of starting your business. These industries include: Advertising, Attorney, Bookkeeping, Credit Card Services, Meeting Space, Printing, Telecom & Computer Sales and Service, Worker's Compensation, Media Consulting, Web Design and Development, and many others.



BUSINESS 2.0



A program bringing together key partners to help all people start and expand their small businesses

The third Thursday
monthly
11Am - 1PM
at the DSBC office
(until we find a bigger location)

Know someone trying to start a small business?
Send them to Business 2.0
302-482-2120

For other personal or business tasks, the Delaware Small Business Chamber would like to help you have all the resources you need. We have created topics that people have in their everyday life and we have created a circle of businesses that work together to help you in that task or may be resources for your business for referrals.

Check out our Circles of Influence for other businesses that can help you in your business and partner with companies to work together.

<https://www.dsbchamber.com/circle-of-influence>

1. If you form a corporation in Delaware, you must pay an annual Franchise Tax for privilege of incorporating in Delaware. The Franchise Tax is payable to the Delaware Division of Corporations. The fee is based on the number of authorized shares within the corporation. If you incorporate in another state but do business in Delaware, you must still register with the Delaware Division of Corporations.

Delaware Division of Corporations
PO Box 898 | Dover, Delaware 19903
Phone: (302)739-3073
www.corp.delaware.gov

2. If you form a corporation in Delaware, you must pay Corporate Income Tax with the Delaware Division of Revenue at a rate of 8.7% of federal taxable income allocated & apportioned to Delaware, based on an equally weighted three-factor method of apportionment. The factors are property, wages and sales in Delaware as a ratio of property, wages and sales everywhere (Chapter 19 Title 30, Delaware Code)

3. Delaware does not have a state or local sales tax; however, there is an annual business license requirement and a gross receipts tax that is imposed on the seller of goods or provider of services. Sales of tangible property are additionally subject to a retail or wholesaler license and gross receipts tax. These taxes are imposed on the seller and remitted monthly or quarterly, depending on the business activity, to the Delaware Division of Revenue (Chapters 21,23,25,27 and 29, Title 30, Delaware Code)

4. For all businesses: Every employer maintaining an office or transacting business in Delaware who makes a payment of wages or other remuneration to a resident or non-resident of this state, must deduct and withhold an amount substantially equivalent to the tax estimated to be due from the employee. Delaware withholding is required, provided such payments are subject to withholding under the Internal Revenue Code (Chapter 11, Title 30, Delaware Code), and is remitted to the Delaware Division of Revenue.

Chamber by the Numbers



2024 events

18 Special Events



11 Ribbon Cutting Ceremonies



26 Networking Events



16 Seminars



14 Signature Events



12 Business 2.0



38 6-Top Mingles



135 Total Events



The Delaware Small Business Chamber has been the leader in events for small business members. Members can attend over 72 events a year for free as part of their membership.

Throughout the year, the Delaware Small Business Chamber holds mixers all over the State of Delaware. there are usually two mixers events a month. One upstate and one in another county. With all of our events. we are in Kent or Sussex Counties at least twice a month on average.

Our 6-Top Mingles are small, intimate members-only networking programs offer members a chance to build relationships with up to 5 other members, all in non-competing industries. The smaller group allows each person a chance to talk and really interact with the other attendees.

Attending one mixer and one 6-Top Mingle a month is part of the guarantee the DSBC offers to our members to get a ROI on their membership investment or get an additional year for free.



SIGNATURE

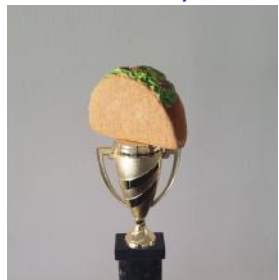
E V E N T S

Looking for opportunities to connect with like-minded peers and gain valuable insights that can drive business growth and success? Join the Speaker/Seminar Series by the Delaware Small Business Chamber - a dynamic platform where prominent experts from diverse industries come together to share their experiences, dive into important topics, and provide actionable strategies to help businesses thrive. Whether you are a new entrepreneur or an established business owner, you can benefit from the knowledge and wisdom shared in these enlightening sessions that explore what matters most in life, business, and education. Don't miss out on this opportunity to expand your network, acquire new skills, and learn from the best in the industry.



April 9 - Annual Meeting & Blue Ribbon Awards Brunch. The event everyone wants to attend. We honor many small businesses and individuals and offer an amazing brunch. Look at the sponsorship opportunities. Come out and help us celebrate the small business community. Be sure to vote for your favorites in March.

September 13- FunFest is always a public favorite. 2025 will have a lot more added with an expanded Taco Cooking Competition and introducing the new Zero Proof Fiesta, along so much more for all ages. Check out the website www.dsbcfunfest.com later in the year. Reserve your space early for the best prices. Fun for the whole family. Sponsorship opportunities and vendor spaces available.



DSBC offers several unique dining experiences as signature events. Watch out for more information on our Supper Club, Dining in the Dark, Beefsteak & Beyond and other special events for an amazing culinary experience like none other.

The Delaware Small Business Chamber offers over 100 events. Check them out.

For a list of all of our events, or to register visit
<http://www.dsbchamber.com/all-upcoming-events>

Business Owners Committed to Helping Each Other Grow

Bob Older and his team have done a wonderful job of building a tribe of like-minded business owners who are committed to helping each other grow. Job well done!!

Joe White - Get Life Coaching

The Delaware Small Business Chamber has been instrumental in helping many of us through COVID with the amount of communications and that continued communication is important for small business. We need a voice, and that voice comes from the Delaware Small Business Chamber.

-Carla Guzzi - Bing's Bakery & Bing's Bake & Brew

What people are saying about the DSBC...

Looks Out For Your Best Interest

"How I feel this chamber is different than others:

- All business are small business owners
- You get to interact with the owners who can make decisions, not the marketing person
- Your membership fee is yearly, this includes everything. You don't have to pay to go to every event.
- They have small breakout groups to get to know the owners on a more personal level
- By being listed on their directory, helps to improve your SEO on Google

If you are a small business owner, I highly recommend the Delaware Small Business Chamber. They are looking out for your best interest, you. Everyone is supportive of one another and helping each other's businesses grow. If you are looking for change, become the change and support local small business."

Dr. Brenda Fairchild - Pea and the Pod Chiropractic

Membership Levels & Benefits

Rather than requiring businesses to pay for a cookie-cutter packaged membership, we have created custom tiers to meet the needs of every business type. You can invest in a level that will provide the highest return on investment (ROI) for your membership and participation with the DSBC. Each membership level has a yearly fee or a monthly payment plan. There are many more benefits to being a member. Check us out.

All members receive:

Over 70 Free Statewide Events: Mixers, Seminars & Networking

New Member Bagels & Benefits Breakfast

Member to Member and Hot Deals Program

Referral Program

Email Updates & Alerts

Landing page with digital coupons, catalogs, virtual trade show booth, intro video, texting directory ...*

Discounted Constant Contact Program

Ribbon Cutting Program

Open House Program

New Member Spotlight in Newsletter

Job Listing Board

Mentorship Program

Chamber Office Promotional Display

Promotional Items included in New Member Basket

DSBC Swag: Membership Certificate, Decals, Logos, Badges, and New Member Basket

Virtual Brochure Rack

Loyalty Prize Program

No Application Fees.

The one-time digital setup fee offers over \$3000 worth of value..

Membership Directory

Alphabetical with primary category listing. Members in good standing as of Dec 13, 2024

A Stitch In Time	Embroidery	Creative Travel, Inc	Travel
A1 Middletown Tent Service	Rentals	CrossFit Bear	Fitness Center
Abbott's on Broad Creek	Restaurant	CS Brazilian Steakhouse	Restaurant
AC Tax Group LLC	Accounting	DANA-Delaware Alliance for Nonprofit Advancement	Non-profit
Affordacare Insurance	Health Insurance	Del Pez Mexican Gastropub /Santa Fe Mexican Grill	Restaurant
Aging in Place Senior Care Serv	Senior Care	Del-One Federal Credit Union	Financial Services
Air Temp Solutions	Hvac	Delaware Department Of Labor	Employee Staffing
Albidress-Sanserson Ins	Insurance	Delaware Hospice	Non-profit
All Restored Inc.	Restoration Services	Delaware Limo	Transportation
Allegiant Fire Protection LLC	Fire Protection Systems	Delaware Moving & Storage	Moving Companies
Alpine and Rafetto Orthodontics	Dentistry	Delmarva Digital	Web Design
Arrow Sanitary Service	Portable Restrooms	Diamond State Financial Group	Financial Services
Artisans' Bank	Banking	Digital Mastery	Marketing
Aspire Wellness	Health & Wellness	Diva Steam Wellness Spa	For Women
Association of the U.S. Army	Non-profit	Dom's NY Style Pizzeria	Restaurant, Pizza
Bahama Breeze Island Grille	Restaurant	Dominick Hanna Photographer	World Class
Bartlett Tree Experts	Tree Services	Dover Federal Credit Union	Credit Union
Beads by Carol	Jewelry	Easterseals Delaware & Maryland's Eastern Shore, Inc.	Non-profit
Bethany Travel	Travel	Elegantly Set In Stone	Home Improv.
Better Business Bureau of DE	Business Services	Elinor's Maid Cleaning Servs	Cleaning Services
BigCentric Appliances	Appliances	ELITE Senior Advisers	Senior Care
Bing's Bake & Brew	Coffee	Encompass Health Rehabilitation Hospital of Middletown	Health & Wellness
Bing's Bakery	Bakery	Enviro-Master of Delaware	Janitorial
Birdie's Links & Drinks	Food & Beverages	Equissential Insights	Training & Coaching
Blue Diamond Dental PA	Dentistry	Evans-Mayhew Marketing	Marketing
BlueHen BBQ	Catering	Excel Business Systems	Copier Sales & Service
Blueprint Photography	Photography	Express Discount Pharmacy	Pharmacy
BMB Bookkeeping, LLC	Bookkeeping	FCCB - First Citizens Community Bank	Banking
Boulden Brothers	Hvac	Fish Window Cleaning	Cleaning Services
The Brady Law Firm	Law	Forget Me Not Families	Non-profit
Breckwoldt and DeCandia CPAs	Accounting	Franklin Mint Federal Credit Union	Credit Union, Banking
Brew Ha Ha	Coffee	Fulton Bank	Banking
Broad Reach Communications	Video Production	Get Life Coaching	Business Coaching
CAN Web Management	Web Design	Gioffre Commercial Realty	Real Estate Commercial
The Candlelight Theatre	Entertainment	Glamour and Grace Day Spa	Skin Care
Carvertise	Advertising	Goodwill of Delaware and Delaware County	Non-profit
Cedar See Vision Center	Medical	Graze Craze	Food & Beverages
CertaPro Painters of Delaware	Home Improv.	Greater Wilmington Convention & Visitors Bureau	Tourism
Chesapeake Inn Restaurant	Restaurant	The Greene Turtle - Middletown	Restaurant
Choice Insurance Agency	Insurance	The Hadley/Laskas Group at Morgan Stanley	Financial Services
Club Pilates Pike Creek	Fitness Center	The Happy Painter	Home Improv.
Clutter J Master	Professional Organizer	The Happy Self-Publisher	Publisher
Coffee Rendezbrew	Coffee	Harrington Senior Center, Inc.	Non-profit
Consciously Cleared & Contained	Home Improvements	Hawkins and Sons Appliances	Appliances
Convergence Public Affairs	Public Affairs	Heaven & Health, LLC	Health & Wellness
Costco Marketing	Retail	Hoffman's Exterminating Co	Pest Control
County Bank	Banking		
The County Women's Journal	Advertising		
Courtyard Newark-UD	Hotels		

HOME- Helping One More Entrepreneur	Business Services	Quick Vend, LLC	Retail
Hopkins and Sons, Inc.	Moving Companies	Ramsey's Farm	Food & Beverages
Hyatt Place Wilmington	Hotels	RAPA Scrapple	Food & Beverages
IMD4	Graphic Design	Real Life Prosthetics	Medical
Impact Graphix & Signs	Graphic Design	reNu Medical & Injury Center	Health & Wellness
In A Heartbeat, LLC	Training And Coaching	The Ruckle Team, Inc	Real Estate Residential
In Jest Events	Catering	Sacksy Thyme	Retail
Insperty	Business Services	SC Associates	Accounting
Integrated Financial Insights	Business Consulting	Schaefer's Canal House	Restaurant
Jan-Pro Franchise Dev.	Cleaning Services	SCORE Delaware	Business Services
JuicePlus+/Tower Garden Marilyn Del Duca	Health & Wellness	SDS, Inc	It Technology
Karen Burke/Patterson-Schwartz Real Estate	Real Estate Residential	Serenity Gardens Assisted Living	Senior Care
Keep It Spinnin Entertainment	Wedding Services	ShopRite of Delaware	Grocery
Keller Williams Realty - Will Webber	Real Estate Residential Marketing	Sightline Events	Event Entertainment
Kinetic Digital Designs	Marketing	Small Business Development Center (SBDC)	Business Coaching
Kirk's Flowers	Florist	Sparano, Vincelette & Joiner, CPAs	Accounting
Kirkwood Auto & Tire Center	Auto Repair	StandByMe Security LLC	For Women
KRM Development Corporation	Real Estate Commercial	Steak & Main	Restaurant
Launcher Community Business Resources	Business Development	Steff DiMartine	Home-based
Legal Shield- Chennita Crawford	Identity Theft Protection	Strano & Feeley Family Funeral Home	Funeral Home
Liquid Alchemy Beverages	World Class	Sunday Breakfast Mission	Non-profit
Longbao Noodle Express	Restaurant	Supporting Kidds	World class
Lori's Hands	Non-profit	The Sussex County Woman	Advertising
Lost Money Detectives LLC	Business Consulting	Sylvan Learning Center North Wilm.	Education
M. O. T. Senior Center	Senior Care	TeamLogic IT	It Technology
Macaroni Kid Sussex DE	Advertising	Terrie M Williams Expansion	Non-profit
Magic Car Wash, Inc.	Car Wash	Texas Roadhouse - Bear	Restaurant
MatchMaid Cleaning Services	Cleaning Services	That 1 Painter Middletown	Painting
The McGavisk Group of Keller Williams	Real Estate	Timothy's Of Newark	Restaurant
Mercantile Processing Inc.	Merchant Services	Tri-State Bird Rescue & Research	Non-profit
Metro Payment Technologies	Merchant Services	True Access Capital	Non-profit
Miller Dunham House B & B	Hotels	U.S. Small Business Admin.	Business Services
Moon Services	Hvac	Union Press Printing	Printing
Moore Sealcoat & Striping	Asphalt Maint.	The Vero	Senior Care
Mosaic	Health & Wellness	Vince Phillip Hair Salon	Beauty Care
Newark Arts Alliance	Art	Virsa Restaurant	Restaurant
Off the Hook Restaurant Group	Restaurant	Virtual B2B Staffing and Consulting	Business Services
Ole Tapas Lounge	Catering	Visiting Angels Dover	Home Care
Party Princess Productions	Entertainment	Waggies by Maggie & Friends	Pets
PAWS For People	Non-profit	Walker's Bookkeeping	Bookkeeping
Payroll Management Assist.	Payroll	Waste Masters Solutions	Trash Removal dumpsters
Pea and the Pod Chiropractic	Chiropractor	We Know Cyber	Cyber Security
Peak Performance Automotive	Auto Repair	WEDCO/DCDC	Non-profit
Perkins Family Restaurant	Restaurant	White Clay Creek Country Club	Wedding Services
Phoenix Used Clothing Corp	Recycling	White Clay Insurance Inc	Insurance
PRIMECARE Comprehensive Health	Medical	Wilderman Physical Therapy	Health & Wellness
The Produce Peddler	Food & Beverages	Wilmington University	Education
Pursers Office Inc	Payroll	Wilmington-New Castle Macaroni KID	Advertising
		Woodside Farm Creamery	Food & Beverages
		World Trade Center Delaware	Non-profit
		WSFS Bank	Banking

Membership Directory

Primary Category Listings

Members prior to December 13, 2024

ACCOUNTING

AC Tax Group LLC
Austin Crissman
801 Mapleton Avenue
Middletown, DE 19709
844-378-1040
www.actaxgroup.com

Breckwoldt and DeCandia CPAs LLC
Mark Breckwoldt
Greenwood, DE
302-480-2349
www.brecandia.com

SC Associates
Sharron Crillo
651 N. Broad St #103
Middletown, DE 19709
302-454-1100
www.scassoc.net

Sparano, Vincelette & Joiner, CPAs
Evelyn Joiner
1814 Newport Gap Pk
Wilmington, DE 19808
302-999-7300
www.svvcpa.com

ADVERTISING

Carvertise
Greg Star
1313 N. Market Street
Wilmington, DE 19801
302-273-1890
www.carvertise.com

The County Women's Journal
Pamela Rizzo
P.O. Box 57
Lewes, DE 19958
302-236-1435
thewomensjournal.com

Macaroni Kid Sussex
Jessica Schlegel
585-489-7670
sussex.macaronikid.com

The Sussex County Woman
Bob Kapke
P.O. Box 1267
Bethany Beach, DE 19930
302-344-1005
sussexcountywoman.com

Wilmington-New Castle Macaroni KID
Leslie Hudson
301-299-0693
newcastle.macaronikid.com

APPLIANCES

BigCentric Appliances
Sal Felicia
151 Edgemoor Road
Wilmington, DE 19809
302-304-1010
www.BigCentric.com

Hawkins and Sons Appliances
Karen Hawkins
400 New Road
Elsmere, DE 19805
302-998-1010
hawkinsandsons.com

ART

Newark Arts Alliance
Terry Foreman
276 E. Main St Ste 102
Newark, DE 19711
302-562-3737
newarkartsalliance.org

ASPHALT

MAINTENANCE
Moore Sealcoat & Striping
David Lewis
204 Morris Rd
Townsend, DE 19734
302-653-1571
www.mooreseal.com

AUTO REPAIR

Kirkwood Auto & Tire
Brian Jones
4913 Kirkwood Hwy
Wilmington, DE 19808
302-995-6179
kirkwoodautocenter.com

Peak Performance Automotive
Ricardo Fullwood
663 Dawson Dr
Newark DE 19713
215-410-9508

BAKERY

Bing's Bakery
Carla Guzzi
253 E. Main Street
Newark, DE 19711
302-737-5310
bingsbakery.com

BANKING

Artisans' Bank
Nicole Monroe Cole
2961 Centerville Road
Wilmington, DE 19808
302-658-6881
artisansbank.com

County Bank
Molly Barbour
19927 Shuttle Road
Rehoboth Bch, DE 19971
302-226-9800
countybankdel.com

FCCB - First Citizens Community Bank
Christine Menser
4900 Kirkwood Hwy
Wilmington, DE 19808
302-250-4028
www.myfccb.com

Fulton Bank
Chris Graham
287 E Main St
Newark, DE 19711
302-737-7766
www.fultonbank.com

WSFS Bank
Tracy Feinsilver
19335 Coastal Hwy
Rehoboth Beach, DE 19335
302-283-4560
www.wsfsbank.com

BEAUTY CARE

Vince Phillip Hair Salon
Vince Phillip
186 East Main Street
Newark, DE 19711
302-342-7287
<https://www.vagaro.com/vincephillipsalon>

BOOKKEEPING

BMB Bookkeeping, LLC
Linda Stevenson
PO Box 4242
Greenville, DE 19807
302-598-7696

Walker's Bookkeeping & Advisory Services LLC
Sophia Walker
Townsend, DE
302-257-6253
walkersadvisory.com

BUSINESS COACHING
Get Life Coaching/ Firewalking Institute
Joe White
Wilmington, DE 19810
302-832-3424
getlifecoaching.com

Small Business Development Ctr - SBDC
Michael Bowman
1 Innovation Way
Newark, DE 19711
302-831-4283
delawaresbdc.org

BUSINESS

CONSULTING
Integrated Financial Insights LLC
Stephen Barczykowski
Newark, DE
302-299-6339
www.ifi-llc.com

Lost Money Detectives LLC
Mark Gannon
2093 Philadelphia Pk
Claymont, DE 19703
302-246-7059
lostmoneydetectives.com

BUSINESS

DEVELOPMENT
Launcher Community Business Resources
Kristin Jackson-Bowen
710 N Lincoln St
Wilmington, DE 19805
302-658-4171
www.LauncherDE.org

BUSINESS SERVICES

Better Business Bureau of Delaware
Jon Bell
60 Reads Way
New Castle, DE 19720
302-221-5259x121
bbb.org/local-bbb/bbb-serving-delaware

HOME- Helping One More Entrepreneur
Joseph Richichi
108 Patriot Dr, Suite A
Middletown, DE 9709
302-274-8060
www.thehomellc.com

Insperty
Bill Polin
1201 North Market St.
Suite 1402
Wilmington, DE 19801
302-545-6373
www.insperty.com

SCORE Delaware
W. Eric Roberson
1105 Market Street
Wilmington, DE 19801
302-661-2366
delaware.score.org

U.S. Small Business Administration
Elyn Herbert
1105 N. Market Street
Wilmington, DE 19801
302-530-2554
www.sba.gov/about-offices-content/2/3107

Virtual B2B Staffing and Consulting
Luvy Stewart
Wilmington, DE 19803
302-217-6667
virtualb2bstaffing

CAR WASH
Magic Car Wash, Inc.
Ginger Emerson
4917 Kirkwood Hwy
Wilmington, DE 19810
302-750-2197
magiccarwashinc.com

CATERING

BlueHen BBQ
Norman Washington
Newark, DE 19711
302-757-9584
Blue-henbbq.com

In Jest Events
Robbie Jester
Wilmington, DE 19808
302-562-2406
robbiejester.com

Ole Tapas Lounge
Manuel Aguinaga
1126 Capitol Trail
Newark, DE 19711
302-224-9378
oletapaslounge.com

CHIROPRACTOR
Pea and the Pod Chiropractic
Brenda Fairchild
500 Christiana Med Ctr
Newark, DE 19702
302-455-7327
peapodchiro.com

CLEANING SERVICES
Elinor's Maid Cleaning Services
Elinor Borges
Newark, DE 19702
302-416-0699

Fish Window Cleaning
Dylan Hannum
1408B. N. Dupont Hwy
New Castle, DE 19720
302-325-3474
www.fishwindowcleaning.com/3215

Jan-Pro of New Castle
Khristian Toolan
2417 Lancaster Ave
Wilmington, DE 19805
302-722-8688
www.jan-pro.com/newcastle

MatchMaid Cleaning Services
Megan Ambrose
Wilmington, DE
800-577-3796
matchmaidpro.com

COFFEE

Bing's Bake & Brew
Vincent Guzzi
57 South Main St #101
Newark, DE 19711
302-751-3177
bingsbakeandbrew.com

Brew Ha Ha
Alisa Morkides
3838 Kennett Pike
Wilmington, DE 19807
302-427-2739x102
www.brew-haha.com

Coffee Rendezbrew
Wanda Guyton
302-307-6611
coffeerendezbrew.com

COPIER SALES, Svc & SUPPLIES
Excel Business Sys
Dee Cairo
201 Ruthar Drive
Newark, DE 19713
302-453-1500
www.exceldigital.com

CREDIT UNION, BANKING
Dover Federal Credit Union
Todd Wilson
1075 Silver Lake Blvd
Dover, DE 19904
302-678-8000
www.doverfcu.com

Franklin Mint Federal Credit Union
Shirl Schanzenbach
1102 Quintilio Dr Ste A
Bear, DE 19701
302-918-2010
www.fmfcu.org

CYBER SECURITY
We Know Cyber
Guy Bilyou
Newark, DE 19711
302-765-8696
weknowcyber.com

DENTISTRY
Alpine and Rafetto Orthodontics
Vickie Dobroski
4901 Limestone Rd.
Wilmington, DE 19808
302-239-4600
beachbraces.com

Blue Diamond Dental
Melanie Daniels
230 Pennsylvania Ave
Wilmington, DE 19806
302-655-8387
bluediamonddental.com

EDUCATION
Sylvan Learning Center North Wilm
Adria Bondanza
2106 Silverside Rd
Wilmington, DE 19810
302-384-7724
www.sylvanlearning.com/locations/us/de/wilmington-tutoring/wilmington

Wilmington University
Melissa Palese
320 N. DuPont Hwy
New Castle, DE 19720
302-327-4797
www.wilmu.edu

EMBROIDERY
A Stitch In Time
Connie McGrory
101 Harrison Avenue
New Castle, DE 19720
302-395-1306
customstitch.com

EMPLOYEE & STAFFING
DE Department Of Labor
Rachel Turney
655 Bay Road
Dover, DE 19901
302-761-8131

ENTERTAINMENT
The Candlelight Theatre
2208 Millers Road
Wilmington, DE 19810
302-475-2313
www.candlelighttheatre.delaware.com

Party Princess Productions Wilmington
Pam Cichocki
Middletown, DE 19709
302-379-1619
wilmington.partyprincessproductions.com

Ramsey's Farm
Stewart Ramsey
440 Ramsey Road
Wilmington, DE 19803
302-540-4680
Ramseysfarm.com

EVENT ENTERTAINMENT

Sightline Events
Steven Lewis
Newark, DE 19711
302-256-8277
sightlineevents.com

FINANCIAL SRVCIS

**Del-One Federal
Credit Union**
Amy Resh
270 Beiser Boulevard
Dover, DE 19904
302-739-4496
www.del-one.org

**Diamond State
Financial Group**
Neil Stalter,
900 Prides Crossing
Newark, DE 19713
302-545-6225
www.dsfg.com

**The Hadley/Laskas Group
at Morgan Stanley**
Nate Moyer
4001 Kennett Pk #216
Greenville, DE 19807
302-573-4025
www.advisor.morganstanley.com/the-hadley-laskas-group

FIRE PROTECTION

**Allegiant Fire
Protection LLC**
Fred Hill
118 Sandy Drive #6
Newark, DE 19711
443-350-2983
allegiantfireprotection.com

FITNESS CENTER

Club Pilates Pike Creek
Laura PelPercio
481 Limestone Road
Wilmington, DE 19808
302-884-7611
clubpilates.co/pikecreek

CrossFit Bear
Wayne Wilson
106 Carson Drive
Bear, DE 19701
302-618-9288
www.bearcf.com

FLORIST

Kirk's Flowers
John Mayer
226 Suburban Drive
Newark, DE 19711
302-737-8072
kirksflowers.com

FOOD & BEVERAGES

Birdie's Links & Drinks
Dylan Hannum
320 Auto Park Drive
Middletown, DE 19709
302-520-4653
www.birdieslinks.com

Graze Craze
Darlene Sullivan
683 Yorklyn Rd Unit 3
Hockessin, DE 19707
302-235-8250
www.grazecraze.com/hockessin-de

The Produce Peddler
John Detwiler
Newark, DE 19711
302-540-0912
theproducepeddler.com

**RAPA Scrapple -
Ralph & Paul Adams**
John Curtis
103 Railroad Avenue
Bridgeville, DE 19933
800-338-4727
rapascrapple.com
Woodside Farm Creamery
Janet Mitchell
378 North Star Road
Newark, DE 19711
302-239-9847
www.WoodsideFarmCreamery.com

FOR WOMEN

**Diva Steam Wellness
Spa**
April White
3101 Limestone Rd - D
Wilmington, DE 19808
610-665-3469
www.divaseteam.spa

StandByMe Security
Jennifer Powell
8 The Green #19556
Dover, DE 19901
302-446-4320
www.StandByMeSecurity.com

FUNERAL HOME

**Strano & Feeley
Family Funeral Home**
Karen Feeley
635 Churchmans Rd
Newark, DE 19702
302-731-5459
stranofeeley.com

GRAPHIC DESIGN

Impact Graphix & Signs
Zeke Wing
415 HARRINGTON ST
Seaford, DE 19973
302-337-7076
impactgraphix302.com

GROCERY

ShopRite of Delaware
501 S. Walnut Street
Wilmington, DE 19801
302-225-6880
www.shoprite.com

HEALTH & WELLNESS

Aspire Wellness
Cheryl McClea
1220 Capitol Trail
Newark, DE 19711
302-366-1727
aspirewellnessnow.com

**Encompass Health
Rehabilitation Hospital of
Middletown**
Christie Watlington
250 East Hampden Rd
Middletown, DE 19709
302-464-3400
www.encompasshealth/middletown

Heaven & Health, LLC
Naomi Hoffman, LMT
270 Presidential Drive
Wilmington, DE 19807
302-999-9565
heavenhealthllc.com

**JuicePlus+/Tower
Garden**
Marilyn Del Duca
Historic New Castle,
302-322-2616
marilyn.juiceplus.com

Mosaic
Ashley Mittelmeier
261 Chapman Rd #201
Newark, DE 19702
302-668-0687
mosaicinfo.org/locations/delaware/all-de

**reNu Medical & Injury
Center**
Doris Leach
1352 Marrows Rd #202
Newark, DE 19711
302-368-0124
renumedicalinjury.com

HEALTH INS

Affordacare Ins
Howard Polansky
512-608-1020
torch.champplan.com/info/DSBChamber

HOME CARE

Visiting Angels Dover
Thomas Smith
1050 Industrial Dr.
Middletown, DE 19709
302-751-3324
visitingangels.com/dover

HOME IMPROVEMENTS
CertaPro Painters of DE
Denise Garvey
405 Old DuPont Rd.
Wilmington, DE 19804
302-379-3616
www.certapro.com/delaware

**Consciously Cleared
& Contained LLC**
Kim Mazewski
Wilmington, DE
302-729-2168
www.consciouslyclearedandcontained.com

Elegantly Set In Stone
Susanne Howarth
400 Marsh Road
Wilmington, DE 19809
302-543-6739
elegantllysetinstone.com

The Happy Painter
Michael Hoffman
Newark, DE 19713
302-737-3163

HOME-BASED
Steff DiMartine
New Castle, DE 19720
302-750-0159

HOTELS
Courtyard Newark UD
Bill Sullivan
400 David Hollowell Dr
Newark, DE 19716
302-737-0900
www.marriott.com/hotels/travel/ilgud-courtyard-newark-university-of-delaware

Hyatt Place
Wilmington
Abigail Lewis
760 S. Justison Street
Wilmington, DE 19801
302-803-5888
hyatt.com/hyatt-place

Miller Dunham House
Bed and Breakfast
Chris Stoker
207 High St, #672
Odessa, DE 19730
302-378-0459
miller-dunham.com

HVAC
Boulden Brothers
Tim Boulden
107 Sandy Drive 700
Newark, DE 19713
302-368-0100
bouldenbrothers.com

Moon Services
Steve Moon
1638 Elkton Rd
Elkton, MD 21921
410-392-9350
www.moonairinc.com

**IDENTITY THEFT
PROTECTION**
**Legal Shield-
Chennita Crawford**
Middletown, DE 19709
302-388-1528
www.cccrawford.wearlegalshield.com

INSURANCE
Albidress-Sanserson
Insurance Agency
1211B Milltown Road
Wilmington, DE 19808
302-368-3010
albidressagency.com
Choice Insurance
Melissa Woolman
1906 Newport Gap Pk
Wilmington, DE 19808
302-998-1412
www.choiceins.com

White Clay Insurance
Brendan Quill
630 Churchmans Rd
Newark, DE 19702
302-393-5012
whiteclayinsurance.com

IT TECHNOLOGY
SDS, Inc
Don Newcomb
800 Pencader Drive
Newark, DE 19702
302-275-6935
sdsontweb.com

TeamLogic IT
Charles Weyhmiller
5584 Kirkwood Hwy
Wilmington, DE 19808
302-446-4100
www.teamlogicit.com/wilmingtonde803

JANITORIAL
Enviro-Master of DE
Michael Kelly
5 Maggies Way Suite 5
Dover, DE 19901
302-735-5555
enviro-master.com

JEWELRY
Beads by Carol
Carol Mack
302-593-6982
beadsbycarol.com

LAW
The Brady Law Firm
William Brady
240 N. James St., #106
Wilmington, DE 19804
302-482-4124x101
www.bradylawde.com

MARKETING
Digital Mastery
Adam Dailey
630 Capital Trail H4
Newark., DE 19711
215-767-2599
www.digitalmasteryservices.com

Evans-Mayhew
Marketing
Lindsey Evans-Mayhew
112 French St
Wilmington, DE 19801
302-307-2772
evansmayhew.com

Kinetic Digital Designs
Melissa Kelley
Smyrna, DE 19977
302-562-3908
www.kineticdigitaldesigns.com

MEDICAL
Cedar See Vision Ctr
Withney Korley
5435 Peterson Rd
Middletown, DE 19709
302-609-0041
cedarseevisioncenter.com

PRIMECARE
Comprehensive Health
Ada Lee
2600 Glasgow Ave
NEWARK, DE 19702
302-204-1639
primecarehealthcare.com

Real Life Prosthetics
Sandy Yeater
Newark, DE 19702
410-569-0606
reallifeprosthetics.com

MERCHANT SRVCS
Mercantile
Processing Inc.
Casey Fitzgerald
32695 Roxana Road
Millville, DE 19967
302-524-8000x103
mpiprocessing.com

Metro Payment
Technologies
Gregg Winnington
510 Century Blvd
Wilmington, DE 19808
302-838-9100x117
metropaytech.com

MOVING CO
**Delaware Moving &
Storage**
Ed Kulesza
214 Bear-Christiana Rd
Bear, DE 19701
302-322-0311x102
www.delawaremovingandstorage.com

**Hopkins and Sons,
Inc. - Atlas Van Line**
Kirsten Pitrizzi
1 Bellecor Drive
New Castle, DE 19720
302-276-7464
hopkinsandsons.com

NON-PROFIT

**Association of the
U.S. Army**
Gary Dawson
Middletown, DE 19709
302-230-6074
www.ausa.org/chapters/delaware-chapter

**DANA-Delaware
Alliance for Nonprofit
Advancement**
Sheila Bravo
100 West 10th Street
Wilmington, DE 19801
302-777-5500
delawarenonprofit.org
Delaware Hospice
Kathleen Wood
630 Churchmans Rd #200
Newark, DE 19702
302-545-5103
delawarehospice.org

**Easterseals Delaware
& Maryland's Eastern
Shore - Kelly Doty**
61 Corporate Circle
New Castle, DE 19720
302-221-2053
de.easterseals.com

Forget Me Not Families
Shanta Lallind
132 Sandy Dr Suite B
Newark, DE 19713
302-416-2897
www.forgetmenotfamiliesde.com

**Goodwill of Delaware
and Delaware County**
Colleen Morrone
300 E Lea Blvd
Wilmington, DE 19802
866-317-2299
www.goodwillde.org

Harrington Senior Ctr
Karen Crouse
102 Fleming Street
Harrington, DE 19952
302-398-4224
harringtonseniorcenter.org

Lori's Hands
Sachi Menard
100 Discovery Blvd 4th fl
Newark, DE 19713
302-440-5454
www.lorishands.org

PAWS For People
Clarice Ritchie
703 Dawson Drive
Newark, DE 19713
302-351-5622
PAWSforPeople.org

**Sunday Breakfast
Mission**
Andrew Swenson
110 N Poplar ST
Wilmington, DE 19801
302-652-8314
www.sundaybreakfastmission.org

**Terrie M Williams
Expansion, Inc.**
Terrie Williams
301 Ruthar Drive
Newark, DE 19711
302-551-3600
www.terriemwilliamsexpansion.org

**Tri-State Bird Rescue
& Research LLC**
Autumn Reiter
170 Possum Hollow Rd
Newark, DE 19711
302-737-9543
www.tristatebird.org

True Access Capital
Luz Sellers
100 W. 10th St., Ste 300
Wilmington, DE 19801
302-652-6774
trueaccesscapital.org

WEDCO/DCDC
Lynn Kris
100 West 10th Street
Wilmington, DE 19801
302-571-9088

**World Trade Center
Delaware**
Carla Stone
42 Reads Way Suite B
New Castle, DE 19720
302-656-7905
www.wtcde.org

PAINTING
That 1 Painter
Middletown
Andrew Pudimott
302-332-8960
www.that1painter.com/middletown

PAYROLL
**Payroll Management
Assistant**
James Paoli
409B White Clay Ctr
Newark, DE 19711
302-456-6816
www.pmapayroll.com

Pursers Office Inc
Rollyn Trueblood
1050 Industrial Dr 110
Middletown, DE 19709
302-239-9788
pursersoffice.com

PEST CONTROL
**Hoffman's
Exterminating Co Inc.**
5169 Summit Bridge Rd
Middletown, DE 19709
302-368-8081
hoffmanpest.com

PETS
**Waggies by Maggie &
Friends**
Ann Grunert
1310 Carruther Ln
Wilmington, DE 19803
302-740-1051
www.Waggies.org

PHARMACY
**Express Discount
Pharmacy**
Pavithran Gujja
4528 Kirkwood Hwy
Wilmington, DE 19808
302-575-9891
www.expressdiscountpharmacy.com

PHOTOGRAPHY
**Blueprint
Photography**
Jamie Lapsley
1104 Kelly Dr
Newark, DE 19711
302-668-6058
www.blueprint-photography.com

PHYSICAL THERAPY
**Wilderman Physical
Therapy**
David Wilderman
4905 Mermaid Blvd
Wilmington, DE 19808
(302)691-9055
www.wildermanphysicaltherapy.com

**PORTABLE
RESTROOMS**
**Arrow Sanitary
Service**
Monica Hamill-
Sammons
1772 Pulaski Highway
Bear, DE 19701
302-834-4546
www.arrowsanitaryservice.com

PRINTING
Union Press Printing
Christine Grimes
1723 W. 8th Street
WILMINGTON, DE 19805
302-652-0496
www.unionpress.com

PROFESSIONAL ORGANIZER

Clutter J Master
Rosalind Jordan
302-388-7822
www.facebook.com/ClutterJMasters

PUBLIC AFFAIRS

Convergence Public Affairs
Ken Grant
1007 Orange St Ste 400
Wilmington, DE 19801
302-588-4151
www.convergencepublicaffairs.com

PUBLISHER

The Happy Self-Publisher
Lois Hoffman
302-419-7289
happyselfpublisher.com

REAL ESTATE COMMERCIAL

Gioffre Commercial Realty
Pat Gioffre
PO Box 5280
Wilmington, DE 19808
302-223-5225
www.gioffrecommercialrealty.com

KRM Development Corp
Marley Gladden
205 Cannon Street #1
Chestertown, MD 21620
410-810-1574
www.krm-dev.com

REAL ESTATE RESIDENTIAL

Karen Burke
Patterson-Schwartz
Karen Burke
7234 Lancaster Pike
Hockessin, DE 19707
302-540-4071
karenjburke.com

Keller Williams Realty
Will Webber
1318 Barksdale Road
Newark, DE 19711
302-368-5400
WillWebberHomes.com

The McGavisk Group of Keller Williams
Michael McGavisk
2420 Porter Road
Bear, DE 19701
302-530-1553
yourroadhome.com

The Ruckle Team, Inc
Todd Ruckle
56 W. Main Street
Newark, DE 19702
302-355-1876
theruckleteam.com

RECYCLING

Phoenix Used Clothing Corp
Babita Jagnanan
132 Sandy Drive
Newark, DE 19713
302-487-5351
www.phoenixusedclothing.online

RENTALS

A1 Middletown Tent
Jim Thornton
1710 Red Lion Rd
Bear, DE 19701
302-437-5911
www.a1middletowntentsevents.com

RESTAURANT

Abbott's on Broad Creek
Karen Baker
111 Delaware Ave
Laurel, DE 19956
302-280-6172
abbottsgrill.com

Bahama Breeze Island Grille
Michael Links
500 Center Blvd.
Newark, DE 19702

302-266-7923
www.bahamabreeze.com/home

Chesapeake Inn Restaurant
Eddie Greer
605 2nd Street
Chesapeake City, MD 21915
410-885-2040
chesapeakeinn.com

CS Brazilian Steakhouse
Pamela Piraino
600 Center Blvd S
Newark, DE 19702
302-355-5551
www.eatsteaks.com

Del Pez Mexican Gastropub /Santa Fe Mexican Grill
Andrea Comegys
501 Grove Ln
Newark, DE 19711
302-740-3244
delpezmexicanpub.com

The Greene Turtle - Middletown
Pranav Desai
416 S Ridge Ave
Middletown, DE 19709
302-454-1592
thegreenturtle.com/location/newark-de

Longbao Noodle Express
Chong Li
626 Newark S. C.
Newark, DE 19711
302-437-5378
Lbdexpress.com

Off the Hook Restaurant Group
Katie Green
2500 Coastal Hwy
Fenwick Island, DE 19944
302-616-1031
tasteeventsandcatering.com

Perkins Family Restaurant
David George
Possum Park Mall
Newark, DE 19711
302-737-3500
eatatperkins.com

Schaefer's Canal House
Angie Rutherford
208 Bank Street
Chesapeake City, MD 21915
410-885-7200
schaeferSCANALHOUSE.com

Steak & Main
Anthony Covatta
107 South Main Street
North East, MD 21901
410-287-3512
steakandmain.com

Texas Roadhouse - Bear
Kineta Russo
250 Buckley Blvd
Bear, DE 19701
302-322-3443
texasroadhouse.com/locations/90-bearde

Timothy's Of Newark
Karen Steele
100 Creek View Road
Newark, DE 19711
302-738-9915
timothysofnewark.com

Virsa Restaurant
Asif Naeem
700 Capitol Trl #8
Newark, DE 1911
302-369-6699
virsanewark.com

RESTAURANT, PIZZA
Dom's NY Style Pizzeria
Dominick Filingeri
218 W. Market Street
Newport, DE 19804
302-998-7154
ilovedomspizza.com

RESTORATION SVCS
All Restored Inc.
Jake McCready
137 Sarah Circle Ste A
Camden, DE 19934
302-697-7810
allrestoredinc.com

RETAIL
Costco Marketing
Cheryl Strootman
900 Center Blvd.
Newark, DE 19702
302-444-9312
www.costco.com

Quick Vend, LLC
Dawn Strootman
227 Fenwick ave
Wilmington, DE 19804
302-319-1599
fortheloveofvending.com

Sacksy Thyme
Susie Conley
303 Ruthar Drive B
Newark, DE 19711
302-420-9040
sacksythyme.com

SENIOR CARE
Aging in Place Senior Care Services
Kristin Stetler
Orchard Commons,
5586 Kirkwood Hwy
Wilmington, DE 19808
302-722-8240
aginginplacescs.com

ELITE Senior Advisers
Esther Celamy Williams
1732A Marsh Rd
Wilmington, DE 19810
302-440-3209
elitesenioradvisers.com

M. O. T. Senior Center
Cecillia DeFazio
300 S Scott St.
Middletown, DE 19709
302-378-4758
motseniorcenter.com

Serenity Gardens
Assisted Living
Julius Woodlin
207 Ruth Dr
Middletown, DE 19709
302-743-1460

The Vero at Newark
Senior Living
Frank DeMarinis
924 Barksdale Road
Newark, DE 19711
302-455-7979
leisurecare.com/our-communities/vero-newark

SKIN CARE
Glamour and Grace Day Spa
Kim Bassette
524 Greenhill Ave
Wilmington, DE 19805
302-981-6028
facebook.com/GlamourandGraceDaySpa

TOURISM
Greater Wilmington CVB
Jen Boes
100 W. 10th Street 20
Wilmington, DE 19801
800-489-6664
visitwilmington.com

TRAININGS
Equissential Insights
JoAnne Ernsberger
2443 McCoy Rd
Bear, DE 19701
302-528-6206
Equissentialinsights.com

In A Heartbeat, LLC
Jeff Berryman
270 Presidential Drive
Wilmington, DE 19807
302-499-4800
inaheartbeatllc.com

TRANSPORTATION
Delaware Limo
Scott Roh
2305 Pyle St
Wilmington, DE 19805
302-319-3329
www.delaware.limo

TRASH REMOVAL /DUMPSTERS
Waste Masters Solutions
Tony Ingram
19 Davidson Lane
New Castle, DE 19720
302-287-8518
wastemasters.com

TRAVEL
Bethany Travel /Dream Vacations
Cindy McCabe
28436 Dupont Blvd
Millsboro, DE 19966
302-933-0955
dreamvacationinc.com

Creative Travel, Inc
Bob Older
700 Capitol Trail 11E
Newark, DE 19711
302-658-2900
creativetravelinc.com

VIDEO PRODUCTION
Broad Reach Communications, LLC
Charles Bailey
15 Berkshire Road
Landenberg, PA 19350
610-255-5454
www.broadreach.tv

WEB DESIGN AND DEVELOPMENT
CAN Web Management
Nicole Hammond
Milford, DE 19963
302-503-3187
canwebmanagement.com

Delmarva Digital
Tim Smith
220 E. Front Street
Laurel, DE 19956
302-875-7700
delmarvadigital.com

WEDDING SERVICES
Keep It Spinnin Entertainment
Dave Voss
Frederica, DE 19946
302-293-1524
www.facebook.com/SpinMaster49

White Clay Creek Country Club
Ryan Kidwell
879 Delaware Park Blvd
Wilmington, DE 19804
302-994-6700
whiteclaycreek.com

World Class Liquid Alchemy
Terri Sorantino
28 Brookside Drive
Wilmington, DE 19804
302-438-0252
liquidalchemybeverages.com

Supporting Kidds
Cassidi Succarotte
1213 Old Lancaster Pk
Hockessin, DE 19707
302-235-5544
supportingkidds.org

Dominick Hanna Photographer
Dominick Hanna
Bear, DE 19701
302-722-6795
dominichanna.com/

Build your brand

Be more visible

3 ways to become a sponsor



Choose an event and register as a sponsor.

Use chamber dollars from membership levels

Select an amount & let us choose the best way to use it.

302-482-2120

RAPA

★ ★ **Scrapple** ★ ★

Our Original

Celebrating 100 years in 2026
Quality since 1926



BREAKFAST ...and MORE
Join us in 2026 for our 100th Anniversary Celebration! As the leading scrapple producer in the USA we offer more scrapple varieties than others including our Original, Bacon, Hot & Spicy, Turkey and Beef recipes.
Check out QR Code for some recipes to enjoy scrapple for more than just breakfast!!

www.rapascrapple.com info@rapascrapple.com Bridgeville, DE 19933 800-338-4727



Celebrating 31 years in 2025

We have traveled to over 73 countries on 5 continents so we can help you get to where you want to go.

No extra fees to plan and book your total vacation packages

Call us to book your:

All-Inclusive Vacations

Honeymoon / Destination Weddings - Cruises

Hotel - Car Rental - Airline tickets

Family Trips / Reunions

Europe - Asia - Cuba - Caribbean

and any other worldwide destination

Wherever in the world you want to go, we can get you there.

www.creativetravelinc.com
302-658-2900



INCREASE YOUR VISIBILITY IN THE COMMUNITY

GET FEATURED. GET CONNECTED. GET NOTICED.

JOIN TODAY!

BE PART OF OUR UNIQUE DIGITAL PROGRAM.

WWW.DSBCHAMBER.COM

302-482-2120





Your *Trusted* Partner

AGRICULTURE | BUSINESS | HOMEOWNERSHIP | RETIREMENT



Find a FCCB Conveniently Located near you!



 **FCCB**
FIRST CITIZENS COMMUNITY BANK
We'll Make it Happen for You!

 Member
FDIC

myfccb.com | 800 326 9486



AND PROMOTIONAL PRODUCTS

CALL OR EMAIL TODAY
TO SEE HOW
WE CAN HELP YOU!

(302) 652-0496

**1723 West 8th Street
Wilmington, DE 19805**

www.UnionPress.com

*Family Owned and Operated
Since 1935*

**OFFSET / DIGITAL
PROMOTIONAL
PRODUCTS**

SHIRTS
MAGNETS
SIGNS
BANNERS
LETTERHEADS
ENVELOPES
BUSINESS CARDS
DOORHANGERS
FLYERS
BROCHURES
FORMS
NUMBERING
TICKETS
NOTE PADS
LABELS
NEWSLETTERS
RACK CARDS
POSTERS
POSTCARDS
INVOICES
CHECKS
DIE CUTTING
INVITATIONS
TAGS

COMMERCIAL DIVERSITY LOAN PROGRAM



- Ideal for women, veterans and minority-owned businesses* to help manage operating expenses and drive success.
- Minimum \$10,000 Business Credit Card or Line of Credit



Dover Federal
CREDIT UNION
www.doverfcu.com

302-678-8000 | commercial@doverfcu.com

*Business is 51% owned, operated, controlled and managed by a woman, minority, or veteran, who are US Citizens. Minorities include Hispanic, American Indian or Alaskan Native, Asian, Black or African American, and Native Hawaiian or other Pacific Islander as defined by the Equal Employment Opportunity Commission (EEOC). Credit is subject to approval. Terms and conditions apply. See credit union for details.

