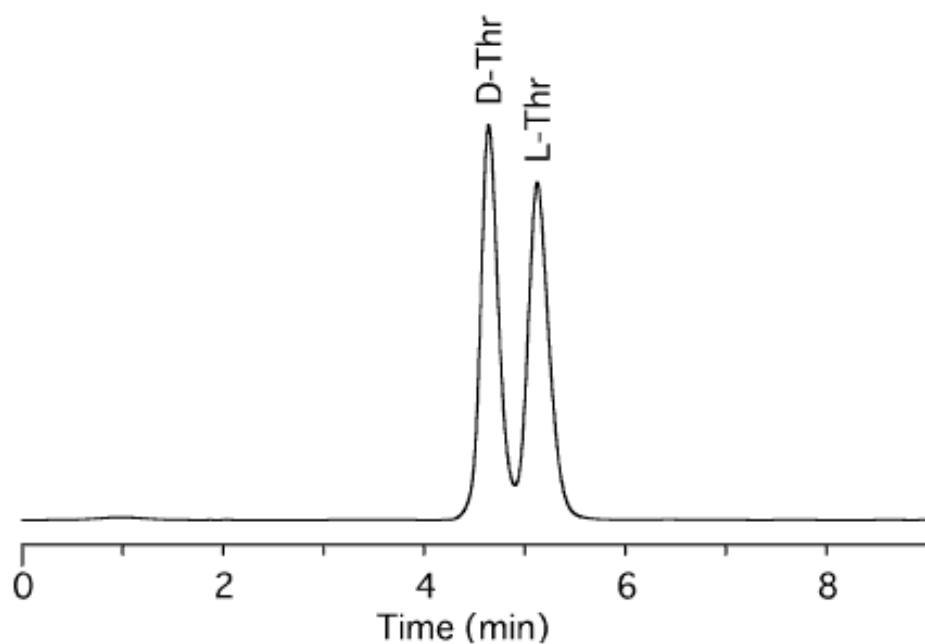


Analysis of OPA-Threonine (Thr)

Data No. LA372-0000

OPA-Thr



Column : Bioptic AV-1
5 μ m
150 \times 4.6 mmI.D.

Solutes : 1. OPA-D-Thr
2. OPA-L-Thr

Column Cat. No. : 5020-02511

Eluent : Methanol / 50mM phosphate buffer (pH6.6) = 2 / 98 (w / w)

Flow rate : 1.0 mL/min.

Col. Temp. : 40°C

Detection : UV 340nm

Injection Vol. : 5 μ L

Sample : 10 μ L Amino acid sol.(10mg/mL 50%MeOH)+ 40 μ L
OPA sol.
L 2-mercaptoethanol in 10mL borate buffer
pH9.2)mixing