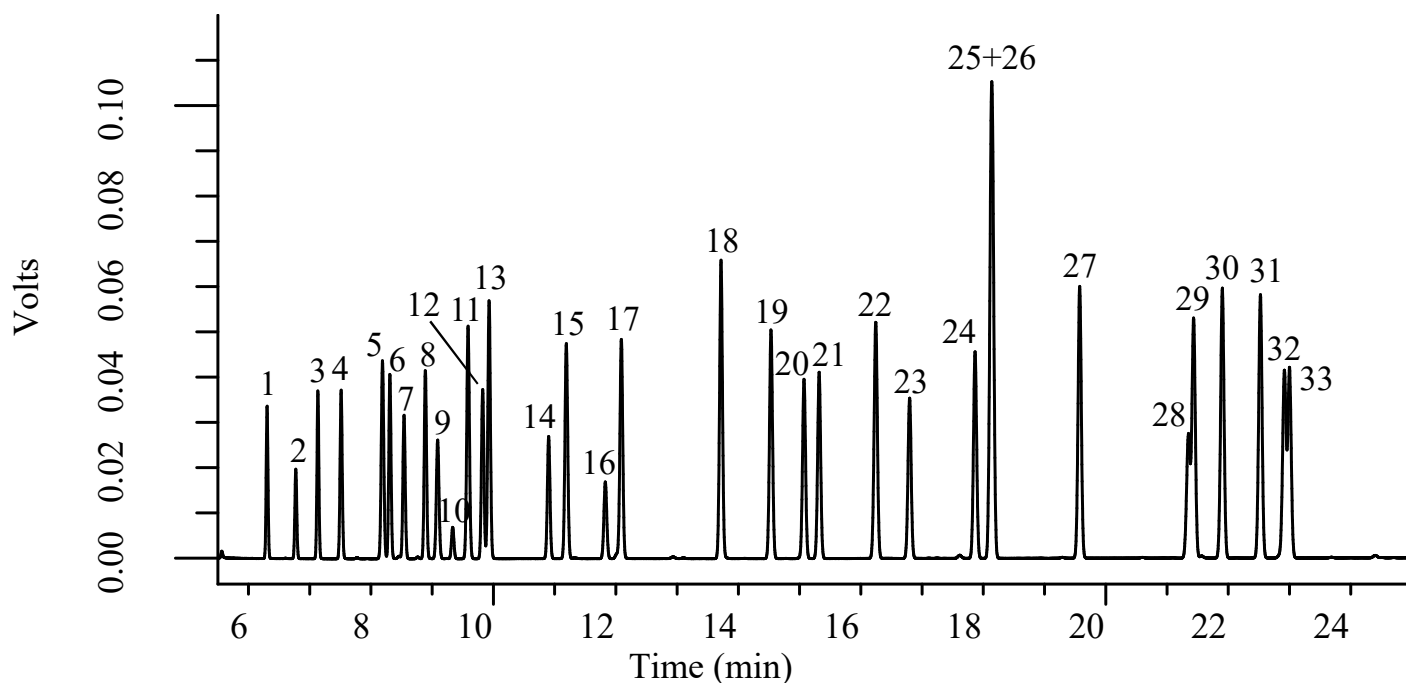


InertSearch™ for GC

InertCap® Applications

Organic Solvents

Data No. GA221-0644



Conditions

System : GC-FID
Column : InertCap AQUATIC
0.25 mm I.D. x 60 m df = 1.0 µm
Col. Cat. No. : 1010-29165
Col. Temp. : 60 °C - 4 °C/min - 150 °C (3 min hold)
Carrier Gas : He 200 kPa
Injection : Split flow 80 mL/min
250 °C
Detection : FID Range 10⁰
250 °C
Sample Size : Analyte in Methanol
0.2 µL
Analyte : 1. 1,1-Dichloroethene
2. Dichloromethane
3. *trans*-1,2-Dichloroethene
4. 1,1-Dichloroethane
5. 2,2-Dichloropropane
6. *cis*-1,2-Dichloroethene
7. Chloroform
8. Bromochloromethane
9. 1,1,1-Trichloroethane
10. 1,1-Dichloropropene

11. Carbondetrachloride
12. 1,2-Dichloroethane
13. Benzene
14. Trichloroethene
15. 1,2-Dichloropropane
16. Bromodichloromethane
17. Dibromomethane
18. Toluene
19. 1,1,2-Trichloroethane
20. Tetrachloroethene
21. 1,3-Dichloropropane
22. Dibromochloromethane
23. 1,2-Dibromoethane
24. Chlorobenzene
25. *m*-Xylene
26. *p*-Xylene
27. *o*-Xylene
28. Bromoform
29. 1,1,2,2-Tetrachloropropane
30. 1,2,3-Trichloropropane
31. Bromobenzene
32. *m*-Chlorotoluene
33. *p*-Chlorotoluene