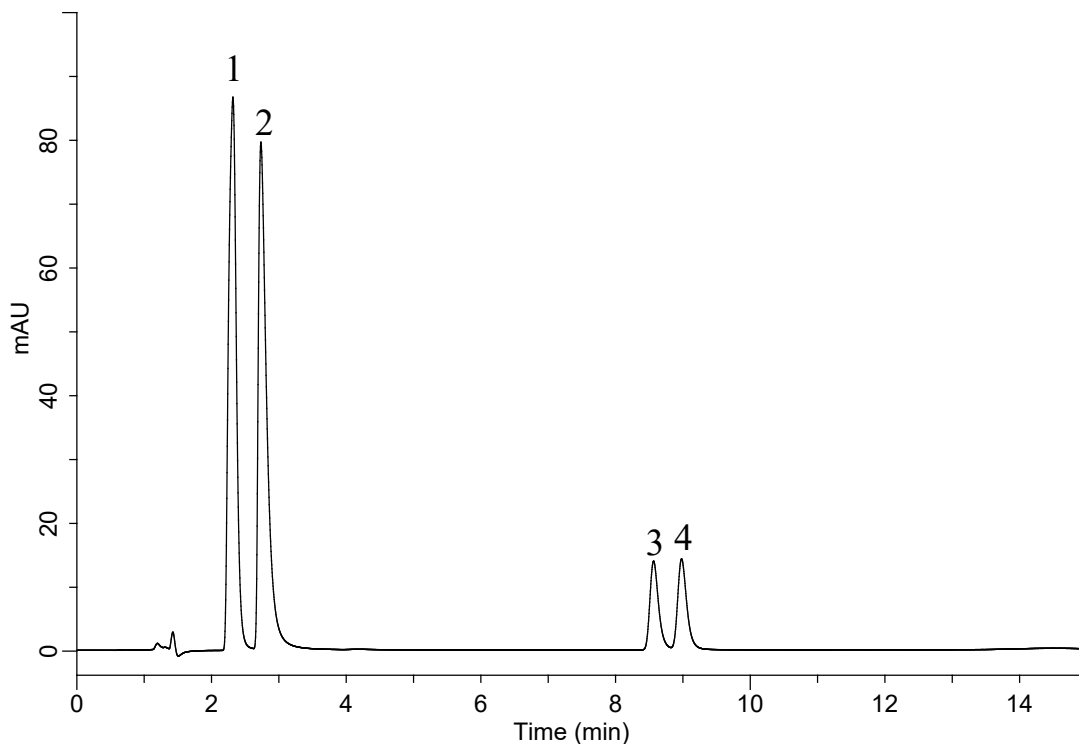


# InertSearch for LC

Inertsil Applications

## Analysis of Preservatives and Sweetener

Data No. LB693-1027



### Conditions

**System** : Chromaster HPLC system  
**Column** : InertCore Plus C18  
(2.6  $\mu$  m, 150 x 4.6 mm I.D.)  
**Column Cat. No.** : 5020-17522  
**Eluent** : A) CH<sub>3</sub>CN  
B) 0.1% H<sub>3</sub>PO<sub>4</sub> in H<sub>2</sub>O  
A/B = 15/85, v/v  
**Flow Rate** : 1.0 mL/min  
**Col. Temp.** : 40 °C  
**Detection** : UV 210 nm  
**Injection Vol.** : 10  $\mu$  L  
**Sample** : Standard

### Analyte:

1. Caffeine	10 mg/mL
2. Saccharin	10 mg/mL
3. Sorbic acid	10 mg/mL
4. Benzoic acid	10 mg/mL