

GROUND FLOOR **MEDICAL OFFICE** FOR LEASE

PRICE	INQUIRE
APPROX SIZE	598+/- RSF
TERM	NEGOTIABLE
POSSESSION	IMMEDIATE



35 EAST 35TH STREET, 1F
BETWEEN MADISON AND PARK AVENUE

LAYOUT

- WAITING AREA
- PRIVATE OFFICE/CONSULT
- KITCHEN
- RESTROOM
- TWO CLOSETS

ADDITIONAL FEATURES

- LARGE WINDOW IN OFFICE/CONSULT
- PARQUET FLOORING
- THRU-WALL AIR CONDITIONING
- ADAPTABLE TO ANY MEDICAL SPECIALTY



Paul L Wexler

LICENSED ASSOCIATE
REAL ESTATE BROKER

P: 212.836.1075
E: PWexler@corcoran.com

Josef Yadgarov

LICENSED ASSOCIATE
REAL ESTATE BROKER

P: 212.836.1097
E: josef.yadgarov@corcoran.com

Kurt Herold

LICENSED ASSOCIATE
REAL ESTATE BROKER

P: 212.323.3817
E: kherold@corcoran.com

Alisia Ramlochan

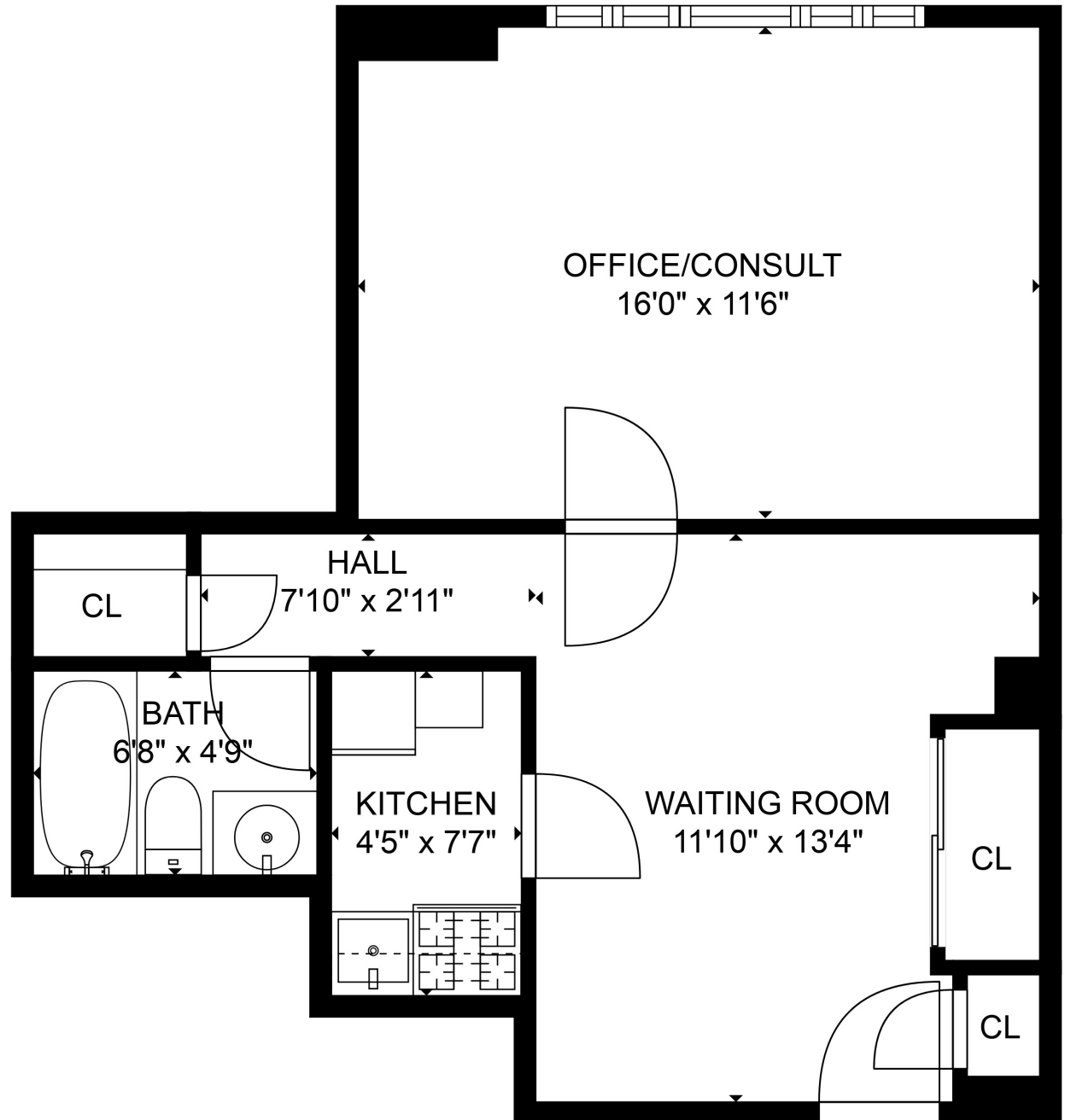
LICENSED ASSOCIATE
REAL ESTATE BROKER

P: 212.893.1450
E: alisia.ramlochan@corcoran.com

Cosmin Bitu

LICENSED REAL ESTATE
SALESPERSON

P: 917.602.5754
E: cosmin.bitu@corcoran.com



FLOOR PLAN FOR ILLUSTRATIVE PURPOSES ONLY

Real estate agents affiliated with The Corcoran Group are independent contractors and are not employees of The Corcoran Group. Equal Housing Opportunity. The Corcoran Group is a licensed real estate broker located at 590 Madison Ave, NY, NY 10022. All information furnished regarding property for sale or rent or regarding financing is from sources deemed reliable, but Corcoran makes no warranty or representation as to the accuracy thereof. All property information is presented subject to errors, omissions, price changes, changed property conditions, and withdrawal of the property from the market, without notice.