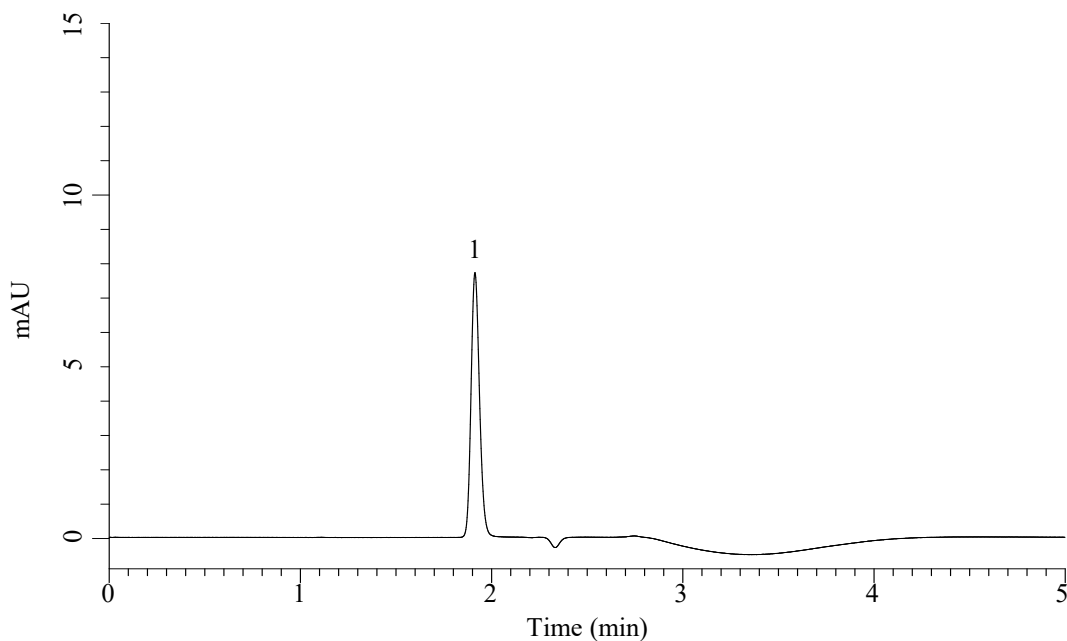


InertSearch for LC

Inertsil Applications

Analysis of Taurine (2-Aminoethanesulfonic acid)

Data No. LB728-0806



Conditions

System : Chromaster HPLC system (HITACHI)
Column : InertSustain AX-C18 (GL Sciences Inc.)
(3 μ m, 150 x 4.6 mm I.D.)
Column Cat. No. : 5020-91051
Eluent : 0.1% HCOOH in H₂O
Flow Rate : 1.0 mL/min
Col. Temp. : 40 °C
Detection : RI
Injection Vol. : 2.5 μ L
Sample : Standard

Analyte:

1. Taurine (2-Aminoethanesulfonic acid)
(10 g/L)