

KINGSLEY MONTESSORI SCHOOL ANNUAL IMPACT REPORT

2023-24



Celebrating 85 Years

Families gathered at a number of events throughout the year to celebrate Kingsley's 85th anniversary.

Exeter Acquisition

Kingsley secured its permanent home with the purchase of 26 Exeter Street.

Alumni Spotlights

Celebrating our newest alumni from the Class of 2024 and features on alumni from the 80s, 90s, and 2000s.

**The Mission of Kingsley Montessori School
is to engage the mind, hands, and heart of
each child to nurture resilient explorers,
confident learners, and empathetic citizens.**



SCHOOL ADMINISTRATIVE TEAM

Kim Barrett, Director of Early Childhood

Francis Cash, Chief Financial & Operating Officer

Katia Christakis, Director of Auxiliary Programs

Wendy Falchuk, Director of Enrollment Management & Community Engagement

Steve Farley, Head of School

Claire Harris, Director of Elementary

Tara Hofherr, Associate Head of School & Director of Next School Counseling

Jamie Lacroix, Director of Marketing & Communications

Julie Perlow, Director of Student Life

Cassidy Rhodes, Director of Administrative Operations

Courtney Tomaselli, Chief Advancement Officer

Deb Tyrrell, Human Resources Consultant

THIS IS A PUBLICATION OF THE KINGSLEY ADVANCEMENT OFFICE

Ellen Doonan, Grace Hoefs, Jamie Lacroix, Courtney Tomaselli

OTHER CONTRIBUTORS

Paige Burton, Steve Farley, Marianne Salza, Samantha Yanofsky

TABLE OF CONTENTS

Leadership Reflections

PAGES 3-5

Leadership Update

PAGE 7

AISNE Reaccreditation

PAGES 8-9

Celebrating 85 Years

PAGES 10-11

Exeter Aquisition

PAGES 12-13

Exeter Campaign

PAGE 14

Financial Highlights

PAGE 15

Annual Fund Festivities

PAGES 16-17

Math Program Innovation

PAGES 18-19

Gifts of Time

PAGES 20-23

Gifts by Level

PAGES 24-27

Gifts by Constituency

PAGES 28-31

Departing Trustees

PAGES 32-33

Graduates & Alumni

PAGES 34-41

Giving by the Numbers

INSIDE BACK COVER

PLEASE NOTE

Every effort has been made to ensure this report's accuracy. If you find errors or omissions, please notify the Advancement Office at 617-226-4902 or advancement@kingsley.org so we can correct our records and amend the online document and future publications.



A LETTER FROM THE HEAD OF SCHOOL



Dear Kingsley Families and Friends,

We opened this school year in high spirits, with the 85th Anniversary Block Party outside our newly-acquired home at 26 Exeter Street. The event, on a picture-perfect fall

afternoon, was an auspicious launch to another year of nurturing our students' natural inclinations toward academic excellence, empowered learning, and kindhearted leadership.

Our anniversary year and the purchase of Exeter dovetailed with the publication of our Strategic Plan, and with the early steps in implementing several of its key priorities. This Plan for advancing our School's program, people, place, and permanence provides a robust outline to ensure Kingsley's bright future, and is grounded in our vision to ensure academic excellence, empowered learning, and kindhearted leadership. The positivity and forward-momentum at Kingsley right now is palpable, and I find it deeply meaningful to know that our actions today build upon our School's rich history. They are the outgrowth of the seeds sown by many dedicated educators and supporters over almost nine decades, to whom I am deeply grateful.

Though much has changed since we opened our doors with two teachers and a single student in a rented space on Beacon Street in 1938, I believe that our School's founders, the visionary educators Edith Kingsley and Helen Loud, would be gratified to see today's Kingsley community living out their

legacy with enthusiasm and dedication. Then, as now, the School's essential values included, in Edith Kingsley's words, "graciousness and consideration for others," and the belief that "learning is an activity of the child and is not a teacher-to-child handout." These perspectives aligned with the Montessori philosophy that we adopted in the 1980s, and they remain the bedrock of our educational model. Even as we integrate contemporary, research-backed curricular enhancements to complement our Montessori practices, we remain true to our initial purpose, per Edith Kingsley, to "love and respect children as individuals" and to "encourage the love of learning."

This Impact Report is a joyful glimpse into all that we accomplished together last year, which was truly one for the record books. It is an opportunity to applaud those who helped make Kingsley what it is today, and those who have joined in partnership to lead us towards ever greater fulfillment of our mission.

It is also an opportunity to applaud all those who have helped make Kingsley what it is today, and those who have joined in partnership to lead us towards ever greater fulfillment of our mission.

With heartfelt gratitude, I thank you, the Kingsley community, for your consistent demonstration of belief in our mission, vision, students, and teachers. Here's to all that is to come for us in the exciting days and years to come.

Much appreciation,

A handwritten signature in black ink, reading "Steve Farley". The signature is fluid and cursive, with a long, sweeping underline.

Steve Farley
Head of School



KINGSLEY'S STRATEGIC PLAN

Strategic Plans are implemented in stages. At Kingsley, there was a strong impetus to move forward in areas of opportunity as soon as they were identified. Even before its formal publication, and then more robustly in 2023–24, Kingsley began implementing initiatives that address key aspects of our four strategic priorities: Program, People, Place, and Permanence. Associate Head of School Tara Hofherr and strategy consultant Leah Goldman P'28 worked closely with School leaders to operationalize the Plan's most immediately actionable elements. In the years ahead, the Board of Trustees and School leaders will continue to use the Plan as their guide in pursuing an ever-greater fulfillment of Kingsley's mission and vision. You will see some of the plan's Strategic Priorities reflected in this report.

The Board joins me in acknowledging the energy, generosity, and belief shown by all members of the extended Kingsley family.

A LETTER FROM THE BOARD CHAIR



Dear Kingsley Community,

On behalf of the Kingsley Board of Trustees, it is my privilege to celebrate this milestone moment in our school's history and to thank you for your collective

contributions to ensuring its strong future. The past year has been unlike any other, and the Board joins me in acknowledging the energy, generosity, and belief shown by all members of the extended Kingsley family.

When we first explored the possibility of securing 26 Exeter Street, it was greeted as both a wonderful opportunity for the School, and, candidly, something of a daunting proposition. The project required robust contributions of time, treasure, and talents from all corners of our community—and you outdid yourselves. Our volunteer leaders set the tone with their unflagging dedication. The real estate committee worked tirelessly to navigate the complexities of the purchase, and the fundraising committee's devoted outreach efforts resulted in a new record for Kingsley capital campaign contributions. There were 138 gifts of all sizes from parents, faculty, alumni, students, and friends that contributed to our cumulative totals of nearly \$4.9M in just 11 months. Truly incredible!

On February 1, 2024, the acquisition was completed, cementing our Back Bay campus and launching a new era for our School.

Meanwhile, our Development Chairs, Annual Fund Co-Chairs, and the Development Committee carried on with their vital work to fuel 2023–24 school programs through the Annual Fund. Philanthropy is a core Kingsley value, and high participation is a School tradition. Both were on full display yet again last year, as our community exceeded \$1M in the Annual Fund, with total Kingsley 2023–24 fundraising topping \$6M.

The Kingsley community's partnership with the School has a lifelong impact, which I have witnessed firsthand through my niece and nephew and their fellow Kingsley alumni friends, who are now in high school and college. They are, to a person, curious, self-motivated, articulate, and empathetic. In short, they continually demonstrate the qualities that characterize a Kingsley education, as do the speakers at the annual Kingsley Alumni Panel and Kingsley Alumni who are highlighted in this magazine. Seeing the long-term benefits of the Kingsley experience reinforces my belief that what we do together, today, to bolster Kingsley and elevate its mission delivery will be repaid tenfold in our children's capacity to rise to their full potential academically, personally, socially, and civically.

Thank you to all members of this community, to our volunteers, donors, families, faculty and staff, alumni, and friends, for helping make the Kingsley experience a lasting gift to all who pass through the doors of Fairfield and Exeter.

Sincerely,

A handwritten signature in dark ink, appearing to read 'Nik Shah'.

Nik Shah
Chair, Kingsley Board of Trustees



“I am one of those incredibly lucky people who gets to do what I love where I love to do it.”

TARA HOFHERR ASSUMES NEW ROLE AS ASSOCIATE HEAD OF SCHOOL



In June 2024, Kingsley proudly announced the appointment of Tara Hofherr as Associate Head of School. During her nine-year tenure at Kingsley, Tara has proven herself exceptionally dedicated to the

institution. In celebration of her new position, we look back on a small slice of the ways in which she has made an impact on our community—and some of the ways she will do so in the future.

Since arriving at Kingsley in 2015 as the Technology Innovation Coordinator, Tara has made tangible contributions to nearly every aspect of school life. From 2018 to 2021, she served as Director of Upper Elementary Education. In that role, she oversaw the creation of the “Upper EI” curriculum we know today—a dynamic, intentional, four-year scholastic cycle including cultural studies based on the Montessori Great Lessons that uniquely prepares our students to thrive in their Next Schools and beyond. She expanded her impact in 2021 by inaugurating the position of Director of Elementary Education, bringing a new level of collaboration and cohesion to our Elementary program.

In the Summer of 2023, Tara was asked to establish yet another new role—Director of Strategic Initiatives. In that capacity, she co-authored the new Strategic Plan with Head of School Steve Farley and Board Chair Nik Shah.

She proved an invaluable partner in successfully making the case for the purchase of 26 Exeter Street. She found new ways to support faculty professional growth; enhanced the academic program from Toddler through Grade 6; became the administrative liaison with the Parent Association; and served as the point person for Kingsley’s diversity, equity, inclusion, and belonging initiatives.

As Associate Head of School, Tara continues to support implementation of Kingsley’s strategic priorities and is taking a larger role in guiding the educational leadership of the School. Through her collaboration with the Parent Association, Tara is building an ever-stronger community at Kingsley and enhancing family-school partnership from Toddler to Sixth Grade. Tara treasures and is proud to maintain her role as Director of Kingsley’s exceptional Next School Counseling Program, which she has held since 2019. She also continues to teach Upper Elementary math and to serve as a Sixth Grade advisor.

In these and many other ways, Tara has been instrumental in advancing Kingsley’s mission. It is a privilege to have her in this new and exciting role. Please join us in congratulating Tara on her new position as Kingsley’s Associate Head of School.

“I am one of those incredibly lucky people who gets to do what I love where I love to do it. I am honored to be a part of this special community, proud of all we’ve accomplished together, and grateful for this opportunity to continue serving our families, students, and faculty and staff.”
—Tara Hofherr, Associate Head of School

KINGSLEY REACCREDITED BY AISNE

In spring 2024, Kingsley was formally reaccredited by the Association of Independent Schools in New England (AISNE). AISNE is a voluntary association and the accrediting body for independent schools like Kingsley throughout Massachusetts, Rhode Island, Vermont, New Hampshire, and Maine.

Every ten years, Kingsley undergoes an AISNE reaccreditation process, which includes a self-study based on fourteen AISNE standards. This eighteen-month endeavor examined all parts of the school, from teaching to business operations to the work of the Board of Trustees. The self-study involved all members of the community as respondents, contributors, writers, and editors. Additionally, Kingsley prepared Curriculum Maps detailing our thematic units, lessons, and educational outcomes at each grade level.

In October 2023, a visiting team of seven educational professionals from peer schools reviewed Kingsley's self-study document and Curriculum Maps, and spent four days on campus observing classes and interviewing community members. The team assessed Kingsley's success across the fourteen AISNE standards and documented their findings, commendations, and recommendations.

We are proud to share that Kingsley has been reaccredited by AISNE for the next ten years. Thank you to the administrators, faculty, staff, and board members who offered their time, efforts, and thoughtful insights throughout the reaccreditation process.



Major Commendations from the AISNE Visiting Team

1. The Visiting Team commends the School's thoughtful integration of Montessori and progressive pedagogical approaches, which powerfully reflect and honor its stated mission and philosophy.
2. The Visiting Team commends Kingsley's instructional staffing, and in particular notes Kingsley's robust team-teaching model and its exceptional and dedicated faculty.
3. The Visiting Team commends Kingsley's purposeful attention to the learning environments in which students and teachers learn joyfully together.
4. The Visiting Team commends Kingsley's ability to forge bonds with families in the 3-year classroom model that are authentic and allow a degree of understanding and partnership that are exceptional.
5. The Visiting Team commends the School's administration for having identified clear and shared strategic priorities related to mission-aligned programmatic evolution and understanding of the levers that will most impact long-term financial and enrollment planning.
6. The Visiting Team commends the School for how student well-being is integrated through several key program areas including athletics, social emotional learning, health education, and core curriculum and classroom experiences.
7. The Visiting Team commends Kingsley's comprehensive Next School Counseling program, led by its Director of Strategic Initiatives and Next School Counseling. All constituencies consistently pointed to the support and insight this program offers as a defining strength of the school.
8. The Visiting Team commends the School for building a mission-aligned and highly effective institutional advancement operation highlighted by an exceptionally strong annual fund program.
9. The Visiting Team commends the collaboration between Admissions, Marketing and Communications, and external marketing companies which helps the School recruit prospective students and families, monitor market trends, and project enrollment forecasts.
10. The Visiting Team commends the Board for its support and development of the Head of School, both through their annual review process and through the active work of the Head of School support committee.
11. The Visiting Team commends the Board for its demonstrated commitment to ongoing training, growth, and development as a governing body.



AISNE SELF-STUDY COORDINATORS

Brittany King
David Liebmann
Sadie Perrin

AISNE VISIT COORDINATORS

Tara Hofherr
Cassidy Rhodes

CELEBRATING 85 YEARS!

85TH ANNIVERSARY EVENT SERIES

SAVE THE DATE
Kingsley Shindig 2.0
February 12, 2025



Spring Shindig

Kingsley parents, teachers, staff, alumni, and friends launched our 85th Anniversary Event Series at the Cambridge Multicultural Arts Center last April for through-the-decades live music with the Muse Band. With drinks, light-bites, and rockin' dance moves, Kingsley grown-ups kicked off the 85th Anniversary celebration series. Thanks to Event Chair and Host, Liz Scholder, for a night to remember.



Summer Events

Over the summer, Kingsley families hosted two kid-friendly 85th Anniversary parties. On the playground and at the pool, alumni, current families, and new, incoming lions enjoyed celebrating and socializing in the sunshine.



Block Party

Over 500 Kingsley friends came together on Saturday, September 28 for the grand finale celebration of Kingsley's 85th Anniversary. Kingsley's first-ever Block Party opened with a 26 Exeter Street ribbon cutting, followed by fun and frivolity for all ages, including balloon animals, face-painting, and a DJ dance party. Thank you to all our volunteers, sponsors, vendors, and Kingsley party-goers!



THE EXETER ACQUISITION:

SECURING OUR PERMANENT HOME IN THE BACK BAY

Exeter Launch: “A Toast to Kingsley”

In late November, the full Kingsley community was invited to campus for a surprise announcement of the campaign to purchase 26 Exeter Street. With archival photos lining the walls, and alumni families and former faculty and administrators joining current parents and staff, school leaders and Board members laid out the exciting vision for a pathway to Exeter ownership. Making the dream a reality would rely on extraordinary and unprecedented community generosity—spoiler alert: you made it happen, Kingsley!



We Did It!

On February 1, 2024, Kingsley officially secured a permanent home at 26 Exeter Street! In a mere 11 months, spurred by the unique urgency of this project and anchored by two generous challenge matches, our community set a new record for philanthropic partnership. In pursuit of this once-in-a-lifetime opportunity, 138 parents, students, alumni families, staff, and friends of the School contributed a cumulative total of \$4,969,888. Our immense gratitude goes out to all who helped make this triumph possible.



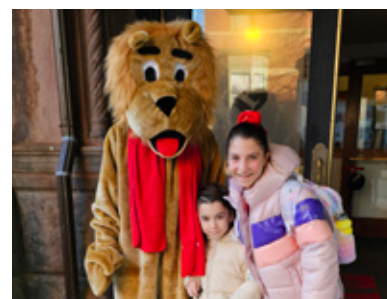
Exeter Spirit Day

On March 7, wearing their Kingsley colors with pride, students and teachers celebrated the Exeter purchase and this exciting moment in our school's history. Elementary students had a special Community Meeting with Kingsley trivia, an appearance by Kingsley the Lion, and a rousing round of cheers and applause for Kingsley.



Exeter Donor Thank You

In March, Exeter campaign donors gathered on Kingsley's Sixth Floor to toast to the acquisition and celebrate Kingsley's permanence in the Back Bay. It was a full-circle moment to see our community's shared dream become a reality for our alumni, students, and students-to-come. Kingsley Community—we did it!!





EXETER CAMPAIGN GIVING

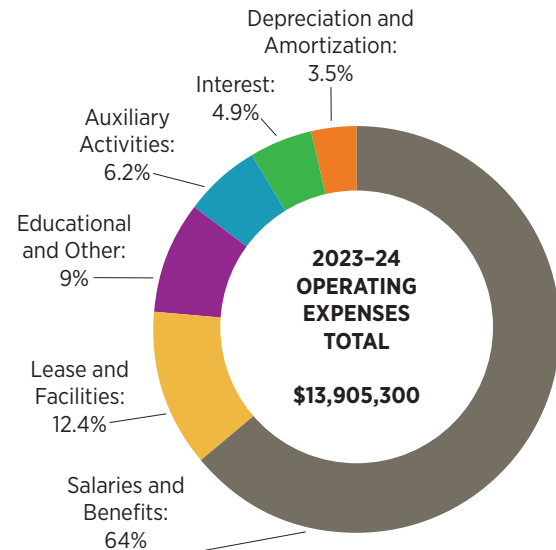
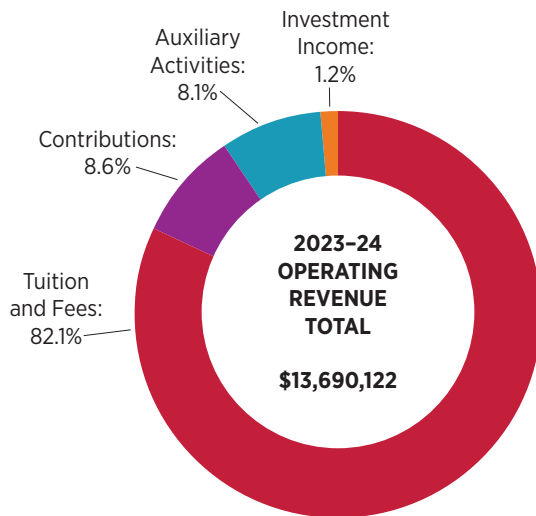
Anonymous (1)
Lisle and Rob Albro
Monique and Neil Austin
Erin and Nick Azrack
Mariko Gillan and Aaron Beeler
Olga Beresneva
and Sergio Bermudez
Betul Cam and Adam Berrey
Jennifer and Jeffrey Blecher
John Casagrande
Ronia Bocchicchio-Chaudhri '26
Elizabeth McGonigle-Breen
and Trevor Breen
Beth and John Breslin
Sheila O'Keefe and Phillip Brown
Maureen and Luke Burns
Lisa Miao and Rich Carona
Heather and Christian Carrillo
Ellie and Brian Chu
Vicki Delmonico
Erica Karlin and Garrett Deninno
Jessica and Dan DeVlieger
Gwendolyn Swasey
and Charles Dimino
Susan and Joseph Dittkoff
Ellen Doonan
Stacylyn and Michael Doore
Ghita Akkar and Morad Elhafed
Alaska and Paul Elia
Zeina and Maged El-Malecki
Sarah DuBeau and Steve Farley
Catherine and Keith Farrow
Kelly Feeney
Tracy and Matthew Friedman
Courtney and Daniel Gedney
Sharon Germana
Carly Yue Wu and
Laurence Groot Bruinderink
Abby Fierman and Mike Grossman
Maggie and Kyle Guinivan
Gloria Smith and Samuel Hagan
Cynthia and Jon Harris
Melissa and Eric Hazen
Katherine Hein
Charlotte and Kurt Hemr
Gabriela Cesaro
and César Hernández
Luz Hernández Munguia
and Luis Hernández

Grace Hoefs
Kati and Richmond Holden
Rebecca and Evan Hornbuckle
John and Pamela Humphrey Family
Victoria, Joanna, Caroline '99
Viva and Geoffrey Hyatt
Jessica and John Jacobs
Regina and Mike Jammen
Alexandra and Jeremiah Johnson
Tara and Reid Jordan
Melissa and Paul Karger
Ashley and Wesley Karger
Anj Iyengar and Jonny Kasen
Jennifer and Alex Khoury
Xiao Wei and Eric Ko
Susie and Patrick Korb
Katie and William Krause
Jamie Lacroix
Ingrid Hammond and Jeff Lau
Tara Murphy and Luke LeSaffre
Dane Rasmussen and Mike Leslie
Lucy Moon-Lim and Richard Lim
Marlena and Robert Love
Justine and Jeremy Macdonald
Melani Cammett and
Angelo Manioudakis
Karen and Kevin Manning
Michael Mars
Kathleen and Jeff McDonald
Cara Sippelle and Jake Merrill
Zinna Alekseeva and Jack Minsky
Vivian Arias and Stephen Moeller
Laurie and Jason Mundt
Laura and Tait Nielsen
Felicia and Joe Pagliuca
Maria and Thanos Pantazis
Alexandra and Minesh Patel
Angela and Hem Patel
Genna Weinstein and JP Paul
Christie Papazian
Ann Conway and Ed Pearson
Mariana and Carmine Petrone
Mary and Brian Peterson
Swan Mai and James Phan
Caitlin McGovern and Conor Pigott
Kathleen and Whit Porter
Tina and Ross Porter
Emily and Graham Proud
Alexis and Alex Rogers

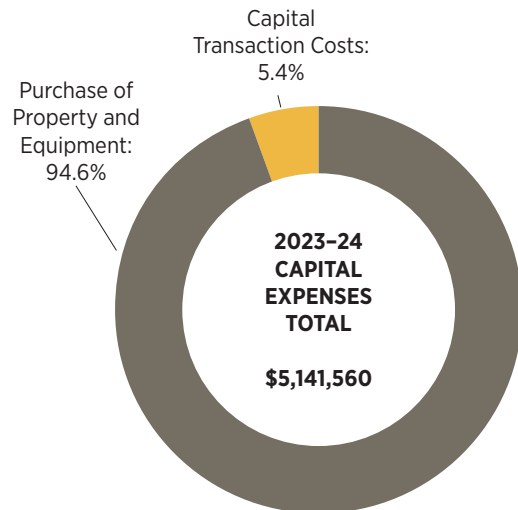
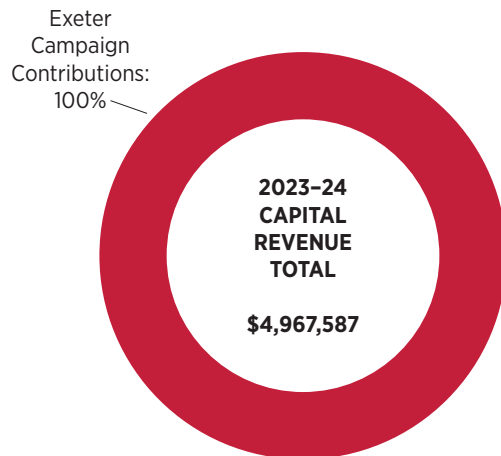
Lauren and Josh Rottner
Nilou Khoobehi and
Hamid Salamipour
Lara Sinicropi-Yao and
Jake Sattelmair
Ella and Tedd Saunders
Shelley Brown and Robert Savignol
Elizabeth Scholder
Matthew Scholder
Cristina Lopez and Dave Schor
The 72 Fund
Rishva Mehta and Kanhai Shah
Jessica and Nik Shah
Eileen and Roy Sherman
Debra and Erich Shigley
The DeWitt Simchik Family
Danielle Frissell and Adam Slutsky
Christine Olsen and Robert Small
Lilia Khasanova Sodhi
and Karan Sodhi
Kate and Jamie Stoddard
Kaitlin and Scott Strode
Geunwon Kim Sun and Harry Sun
Amy and Andrew Szczurowski
Lisa and Patrick Taffe
Andrés Tandazo
Hamasat Gheddaf Dam
and Priyank Taneja
Aparna and Amar Tanna
Allyson Bloom and Sam Thakarar
Courtney and Jerome Tomaselli
The Smith Trial Family
Anwita and Omkar Vaidya
Eva Douzinas and John Veson
Nicole and Bing Waldert
Kristin and Jon Wallace
Susan and Kyle Weaver
Nicole Zatlyn and Jason Weiner
Cessy Templeton and Bruce Wheeler
Supriya and Rathin Yagnik
Megan Yao
Lewis Wadsworth IV and Karen Yee
Sofia '14 and Athena '19
Yee-Wadsworth
Adelle Chang and Eddie Yoon
Fatima and Shahzad Zia

FINANCIAL HIGHLIGHTS

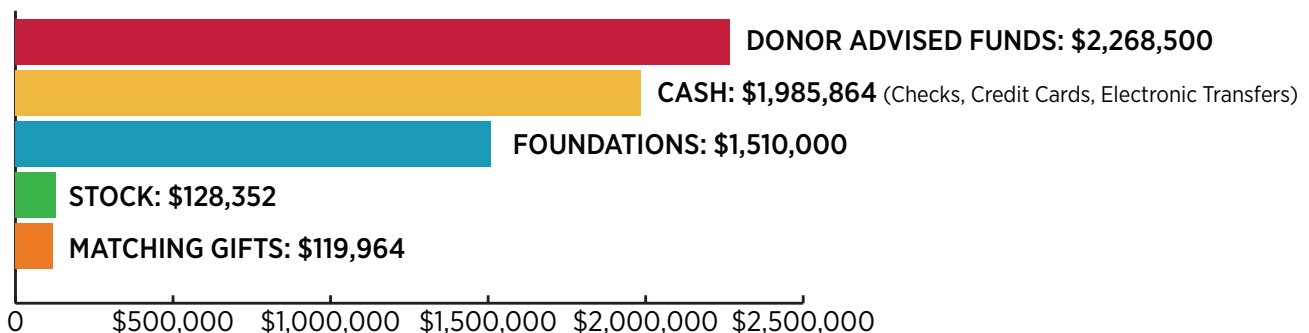
Operating Revenue & Expenses



Capital Revenue & Expenses



Gifts by Type



LOOKING BACK:

2023-24 ANNUAL FUND FESTIVITIES

Annual Fund Kickoff

Cider, popcorn, and donuts, oh my! The Kingsley Community kicked off the 2023-24 Annual Fund in style in the Exeter Atrium, with pumpkins and fall flowers adorning both the Third and Fourth floors. Thanks to our hosts, Amy and Andrew Szczurowski for envisioning and bringing to life this Fall Fête!



Donor Drinks

In December, Annual Fund donors were invited to cap the fall campaign at Donor Drinks—three festive house parties hosted by Kingsley families. Each unique celebration raised a toast to our community's generosity and our mutual commitment to a Kingsley education. Thanks to our hosts, Laura and Tait Nielsen, Kati and Richmond Holden, and Sara Schlegel and Roy Schoenberg.



**KINGSLEY
GIVING DAY** THURSDAY,
APRIL 4

1.2M 

RACE TO THE FINISH

Giving Day: Race to the Finish!

Students sported temporary tattoos and red racing wristbands to celebrate Kingsley Giving Day, where the entire community came together to close out the Annual Fund. Gifts throughout the day entered families into fun challenges to win prizes, gift cards, and student experiences. We raised over \$200k for Kingsley and exceeded our goal of 200 gifts, including 30+ grandfriend gifts and 30+ gifts from alumni and students. It was a Giving Day for the record books!



SAVE THE DATE
Kingsley Giving Day
April 10, 2025



Leadership Circles Celebration

Thank you, Leadership Circle members, for your 2023–24 contributions to the Annual Fund, Exeter, and other vital priorities! In appreciation for this generous investment, Head of School Steve Farley and the Kingsley Board of Trustees welcomed these friends for drinks and light bites overlooking Newbury Street. Special thanks to Ms. Shawnta, Comm 4 Lead Teacher and Faculty Advancement Advisor, for sharing how giving impacts the teacher experience, and to our hosts, Daisy Penney P'30 and The Penney + Gould Team for hosting us in Compass' refined, modern, light-filled setting, mere steps from Kingsley.



GOOD TO GREAT: PHILANTHROPY FUELS ELEMENTARY MATHEMATICS INNOVATION

Thanks to ongoing philanthropic support, Kingsley's four-year partnership with Lesley University's Center for Mathematics Achievement is going strong, helping students and teachers become ever more confident, collaborative, and deeply engaged in mathematical thought and application.

Year One (2022–23):

Setting the Stage

Lesley University partners came to campus to observe classes, interview teachers, and work with faculty to articulate our priorities and identify a new mathematics curriculum. We developed the mathematics scope and sequence for Grades 3–5 and produced Kingsley's first schoolwide Math Charter. We revised the mathematics benchmarks for Kindergarten through Grade 6 to set clear learning goals and ensure meaningful and consistent assessments. New benchmarks will aid smooth transitions between Kingsley divisions and, finally, into middle school.

Year Two (2023–24):

New Methods and Practices

Grades 3–6 saw the rollout of Illustrative Mathematics (IM), a rigorous and inquiry-based curriculum that supports students in developing a deep conceptual understanding of math. For Grades 1–2, we outlined a plan for our faculty and coaches to develop Kingsley Math Albums and other tailored curriculum materials over the summer.

"We appreciate the enduring value of Dr. Montessori's approach, while recognizing that some elements of a comprehensive mathematics education fall outside of traditional Montessori math. Illustrative Mathematics is an ideal bridge between our foundational Montessori approach and the robust benchmarks we have affirmed for Kingsley students." –Shelby Strong, Elementary and Secondary Math Consultant at the Center for Mathematics Achievement

Year Three (2024–25):

Program Expansion and Deepening


Grades 3–6 are in their second year of using the Illustrative Mathematics (IM) curriculum to great success. The impact of the new program is being assessed along the "Four C's" framework:

Communicate: Encouraging students to openly share ideas, questions, and solutions helps deepen their mathematical understanding.

Collaborate: Problem-solving together builds teamwork skills essential for real-world applications beyond the classroom.

Critical Thinking: Tackling challenging tasks fosters independence and hones problem-solving abilities.

Creativity: Exploring unique approaches and prioritizing sense-making over rote procedures develops adaptable thinkers.

Schoolwide Math Charter

- **Everyone** can learn math.
- **Struggling and making mistakes** helps us grow.
- **Asking questions, testing our ideas, and learning from others** helps us understand math.
- We have **different math ideas** and can show them in different ways.
- We **share our thinking** so others can understand our work.
- **Understanding** is more important than how fast you are.

“By integrating Montessori materials with the rigor and research of the Illustrative Mathematics curriculum, we support students in mastering both concrete mathematical concepts and advanced problem-solving skills. Tracking student progress in these areas allows us to refine our approach continually, ensuring that our students grow as confident, capable mathematicians prepared for future success.”—Claire Harris, Director of Elementary Education

Year Three (continued):

New Grades 1-2 Kingsley Math Albums include information about child development, work samples, and detailed material and presentation instructions. Over the summer, two of Kingsley’s Montessori-credentialed educators, Robbie Walton and Caelainn Costello, worked closely with Lesley University consultants to create a robust Grade 1 mathematics curriculum. The new curriculum integrates Montessori math, elements of IM, and other best practices in education. The current Grade 1 curriculum will be organically expanded upon in Grade 2 lessons. This natural melding will illuminate an authentic and robust Grade 2 curriculum, to be made explicit next year.

This school year, Kingsley Lower Elementary teachers and consultant Shelby Strong have worked together in coaching cycles. These dedicated times for co-planning and co-teaching allow teams to practice and assess a variety of teaching strategies and material uses. The Leslie coaches also provide invaluable professional development for teachers to further hone their skills and practices as math educators.

Looking Ahead

The four-year mathematics partnership will culminate in 2025–2026, with the full implementation of Illustrative Mathematics, and solidification of the Kingsley Math Program curricula and Grades K–6 math benchmarks. With three full years of coaching and teamwork under their belts, teachers will have gained expertise with the program, and the Class of 2026 will be the first Kingsley students to have used Illustrative Mathematics throughout their Upper Elementary cycle. Each successive grade will benefit from this four-year-long investment in a vibrant, engaging Kingsley Math Program that ignites our students’ inherent love of learning and builds lifelong confidence in their ability to reason mathematically and solve complex problems.

Thank You, Partners and Collaborators

Generous support from Chris Olsen and Rob Small makes this project possible and we are truly grateful. Thank you to CMA consultant Shelby Strong and the many Kingsley educators who are designing and implementing this exciting work.



“The IM curriculum encourages students to find answers in a variety of ways and explore the methods of their peers. It encourages them to explain their reasoning and strategy in problem-solving, rather than simply producing an answer.” —Caelainn Costello, Lower Elementary Teacher & Coaching Cycle Partner

2023-24 GIFTS OF TIME

Boards of Trustees Committees

Board Executive Committee

Nik Shah, *Chair*
Lara Sinicropi-Yao, *Vice Chair*
Heather Carrillo, *Treasurer*
Morad Elhafed, *Vice Treasurer*
Dane Rasmussen, *Clerk*

Board Members

Robert Albro
Vivian Arias
Fatima Aziz
Nicholas Azrack
Danielle Frissell
Ingrid Hammond
Tara Jordan
Jonny Kasen
William Krause
Laura Nielsen
Maria Pantazis
Dane Rasmussen
Joshua Rottner
Tedd Saunders
Robert Small
Kristin Wallace

Audit Committee

Will Krause, *Chair*

Committee on Trustees

Vivian Arias, *Chair*
Steve Farley
Tara Jordan
Maria Pantazis
Dane Rasmussen
Josh Rottner
Rob Small

DEI Task Force

Lara Sinicropi-Yao, *Chair*
Vivian Arias
Steve Farley
Claire Harris
Tara Hofherr
Tara Jordan
Julie Perlow
Dane Rasmussen
Nik Shah
Pete Zetlan

Development

Development Co-Chairs

Laura Nielsen
Kristin Wallace

Annual Fund Co-Chairs

Anj Iyengar & Jonny Kasen
Amy & Andrew Szczurowski

Development Committee Members

Rupi Arora
Fatima Aziz
John Breslin
Megan Donovan-Chien
Nicole Christopoulos
Marivi Crespo
Carrie DeWitt
Vicki Delmonico
Stacylyn Doore
Amanda Erhard
Danielle Frissell
Chris Grimley
Laurence Groot Bruinderink
Kati Holden
Will Krause
Luke LeSaffre
Heidi Makrinioti

Karen Manning
Caitlin McGovern
Joe Pagliuca
Angela Patel
Lisa Pizzi
Tina Porter
Lauren Rottner
Sara Schlegel
Matthew Scholder
Jessica Shah
Nik Shah
Kate Stoddard
Harry Sun
Aparna Tanna
Genna Weinstein
Claudia Winston
Rathin Yagnik

Faculty Advancement Advisors

Shawnta Carson
Sarah Crowley
Rallee Holt
Ashley Malloy
Hadley Catalano Manning
Laura Mendelson
Erin Morse
Josh Squire
Haley Steffens
Robbie Walton

Alumni Family Annual Fund Representatives

Eleanor Cornish Chu
Karen Yee

Alumni Engagement Committee Co-Chairs

Caroline Humphrey Clifford
Bryan Flynn

Alumni Engagement Committee

Max Aboko-Cole
Hugh Jones
Christine Minott
Adam Vartikar

Grandparent Representatives

Nedra Gusenburg
Mary Pressman



The role of the Kingsley Board of Trustees is threefold: hiring, evaluating, and overseeing the Head of School; ensuring fiduciary stability; and developing strategic goals for the ongoing fulfillment of the School's mission.

85th Anniversary Events Committee

85th Anniversary Co-Chairs

Fatima Aziz
Kristin Wallace

Spring Shindig Chair

Elizabeth Scholder

Block Party Co-Chairs

Nicole Barsalona
Jessica Shah
Kaitlin Strobe

Events Committee

Vivian Arias
Fatima Aziz
Beth Breslin
Shelley Brown
Adelle Chang
Carrie DeWitt
Alaska Elia
Bryan Flynn
Joanna Humphrey Flynn
Danielle Frissell
Chris Grimley
Anj Iyengar
Katie Krause
Cristina Lopez
Marlena Love
Heidi Makrinioti
Justin Manjourides
Ami Maru
Lisa Miao
Shephali Patel
Ambika Patni
Daisy Penney
Lisa Pizzi
Kathryn Rogers
Elizabeth Scholder
Jessica Shah
Kanhai Shah
Jamie Simchik
Lara Sinicropi-Yao
Kristen Standish
Amy Szczurowski
Kristin Wallace

Finance

Heather Carrillo, *Chair*
Francis Cash
Morad Elhafed
Steve Farley
Mike Grossman
Tara Jordan
Jonny Kasen
Matthew Scholder
Nik Shah

Head of School Support

Tara Jordan
Nik Shah
Lara Sinicropi-Yao

Real Estate Committee

Rob Albro, *Chair*
Nick Azrack
Francis Cash
Steve Farley
Mike Jammen
Dane Rasmussen
Nik Shah

Strategic Plan Rollout

Leah Goldman

Student Safety & Wellness Task Force

Ingrid Hammond, *Chair*
Vivian Arias
Steve Farley
Claire Harris
Tara Hofherr
Tara Jordan
Julie Perlow

Exeter Campaign Committee

Co-Chairs

Tara Jordan
Will Krause
Nik Shah
Lara Sinicropi-Yao

Members

Rob Albro
Vivian Arias
Nick Azrack
Megan Donovan-Chien
Morad Elhafed
Steve Farley
Matt Friedman
Grace Hoefs
Tara Hofherr
Jonny Kasen
Stephen Moeller
Laura Nielsen
Dane Rasmussen
Josh Rottner
Tedd Saunders
Matthew Scholder
Jessica Shah
Rob Small
Courtney Tomaselli
Kristin Wallace

Exeter Real Estate Committee

Rob Albro, *Chair*
Nick Azrack
James Bonsey
Luke Burns
Francis Cash
Steve Farley
Mike Jammen
Dane Rasmussen
Nik Shah



2023-24 GIFTS OF TIME

Community Committees

Admissions Ambassadors

Committee Chairs

Shelley Brown
Meg Galat

Committee Members

Erin Azrack
Nicole Barsalona
Aaron Beeler
Sergio Bermudez
Beth Breslin
Rachel Cargo
Nicole Christopoulos
Amanda Erhard
Abby Fierman
Dan Gong
Maggie Guinivan
Meaghan Hildreth

Kati Holden
Susie Korb
Katie Krause
Justine Macdonald
Caitlin McGovern
Lisa Miao
Luz Munguia-Hernandez
Tina Porter
Emily Proud
Namrita Rai
Breighl Robbins
Kathryn Rogers
Jenny Rojas
Jessica Shah
Debra Shigley
Jamie Simchik
Cara Sipprelle
Genna Weinstein

Grandfriends Day Volunteers

Adelle Chang
Alaska Elia
Courtney Gedney

Lisa Musto
Lara Sinicropi-Yao
Kait Strode



Parent Association Committees

Co-Presidents

Katie Krause
Shephali Patel

Treasurer

Dmitri Serbarinov

Around the World

Teresa Chuang
Claudia Robaina Winston

Communications

Debra Brodsky
Chris Clements
Leah Goldman
Chris Grimley
Grace Hoefs
Ashley Karger
Geunwon Kim
Jamie Lacroix
Lisa Miao
Elizabeth Scholder
Jamie Simchik

Early Childhood Events

Roxi Horton
Lily Sodhi
Geunwon Sun

Elementary Enrichment

Nicole Barsalona
Jessica Shah

Kingsley Cares

Aaron Beeler
Annie Fuller

Kingsley Outdoors

Adam Slutsky
Mike Tilford

Teacher Appreciation

Shelley Brown
Tara Murphy
Kristin Wallace

Class Parent Coordinators

Beth Breslin
Marlena Love
Ambika Patni

Class Parents

Vivian Arias
Fatima Aziz
Beth Breslin
Shelley Brown
Betul Cam
Heather Carrillo
Adelle Chang
Nicole Christopoulos
Hamzat Ghedda Dam
Carrie Dewitt
Maria Paulina Echandi
Amanda Erhard
Catherine Farrow
Joanna Humphrey Flynn
Danielle Frissell
Meg Galat
Courtney Gedney
Melissa Greco
Chris Grimley
Amy Haley
Adam Hall

Jackie Hall
Ingrid Hammond
Kati Holden
Roxi Horton
Ashley Karger
Melissa Karger
Jennifer Khoury
Geunwon Kim
Susie Korb
Katie Krause
Alisha Lakhani
Jeff Lau
Justine Macdonald
Justin Manjourides
Karen Manning
Tara Murphy
Lisa Musto
Chris Olsen
Nilay Patel
Lisa Pizzi
Tina Porter
Lauren Rottner
Ella Saunders
Tedd Saunders
Elizabeth Scholder
Dina Selkoe
Sonia Deng Serbarinova
Jessica Shah
Kanhai Shah
Jamie Simchik
Lara Sinicropi-Yao
Cara Sippelle
Edlyn Smith
Alison South
Kait Strobe
Amy Szczurowski
Lisa Taffe
John Walsh
Claudia Robaina Winston



CUMULATIVE GIVING

This list reflects all charitable contributions to Kingsley between July 1, 2023 and June 30, 2024. It includes gifts to the Exeter Campaign, the Annual Fund, Financial Aid, and designated programmatic support.

Gifts by Level

Founder Circle (\$100,000+)

Erin and Nicholas Azrack
Tara and Reid Jordan
Laura and Tait Nielsen
Felicia and Joe Pagliuca
Christine Olsen and Robert Small
Lisa and Patrick Taffe
The 72 Fund

Kingsley Circle (\$50,000-\$99,999)

Ghita Akkar and Morad Elhafed
Vivian Arias and Stephen Moeller
Tina and Ross Porter
Dane Rasmussen and Mike Leslie
Lara Sinicropi-Yao
and Jake Sattelmair
Ella and Tedd Saunders
Elizabeth Scholder
Matthew Scholder
Eva Douzinas Veson
John Veson

Head of School Circle (\$25,000-\$49,999)

Anonymous
Lisle and Rob Albro
Jennifer and Jeffrey Blecher
Stacylyn and Michael Doore
Charlotte and Kurt Hemr
Kati and Richmond Holden
Rebecca and Evan Hornbuckle
Jessica and John Jacobs
Ashley and Wesley Karger
Tara Murphy and Luke LeSaffre
Lucy Moon-Lim and Richard Lim
Michael Mars
Alexandra and Minesh Patel
Caitlin McGovern and Conor Pigott
Alexis and Alex Rogers
Lauren and Josh Rottner
Cristina Lopez and David Schor
Jessica and Nik Shah
Debra and Erich Shigley
Danielle Frissell and Adam Slutsky
Amy and Andrew Szczurowski
Kristin and Jon Wallace
Adelle Chang and Eddie Yoon

Lions Circle (\$10,000-\$24,999)

Anonymous (2)
Mariko Gillan and Aaron Beeler
Laura and Mark Begor
Elizabeth McGonigle-Breen
and Trevor Breen
Beth and John Breslin
Maureen and Luke Burns
Lisa Miao and Rich Carona
Heather and Christian Carrillo
Megan Donovan-Chien
and Kenneth Chien
Alaska and Paul Elia
Morgan and Andrew Elzinga
Abby Fierman and Mike Grossman
Gabriela Cesaro and
César Hernández
Pamela Humphrey
Melissa and Paul Karger
Anj Iyengar and Jonny Kasen
Jill Ozzie and Patrick Kinsel
Xiao Wei and Eric Ko
Susie and Patrick Korb
Katie and William Krause
Amy Flaster and Elliot Mattingly
Katie and Jeff McDonald
Cara Sipprelle and Jake Merrill
Emily and Graham Proud
Kate and Jamie Stoddard
Kaitlin and Scott Strode
Geunwon Kim Sun and Harry Sun
Hamasat Gheddaf Dam
and Priyank Taneja
The Rudolph J. Torello Foundation
Nicole Barsalona and Michael Tonelli
Anwita and Omkar Vaidya
Nicole Zatlyn and Jason Weiner
Supriya and Rathin Yagnik

Leadership Circle (\$5,000-\$9,999)

Anonymous
Heidi Makrionoti
and Thomas Antoniadis
Monique and Neil Austin
Betul Cam and Adam Berrey
Catherine and Keith Farrow
Lissy Hu and Stephen Fiascone

Meg and Nicholas Galat
Courtney and Daniel Gedney
Ting Zhang and Dan Gong
Carly Yue Wu and
Laurence Groot Bruinderink
Maggie and Kyle Guinivan
Amy Brisson Haley
and Christopher Haley
Marivi Crespo Moreira and
Alvaro Herreros Arregui
Diane and Bob Hildreth
Roxi and Evan Horton
Regina and Michael Jammen
Lisa Cavicchioli and Matt Katz
Marlena and Robert Love
Sarah and Thomas Lyons
Fabienne Courtois
and Matthew Maddess
Christina and Nick Manice
Anna and Patrick Marchek
Ali and Phil O'Rourke
Angela and Hem Patel
Molly and Brian Peterson
Mariana and Carmine Petrone
Kate and Charlie Reichenbach
Adriana Roca and Nicolas Rodriguez
Emma Baumgartner
and Brian Schwartz
Dina and Greg Selkoe
Carrie DeWitt and Jamie Simchik
Fran and Dennis Slutsky
Lily Khasanova Sodhi
and Karan Sodhi
Sarah Clinton and Mike Tilford
Daryn Lewis and Keith Tomlinson
Kumika and Buck Watia

Friends Circle (\$2,500-\$4,999)

Ozden and Fatih Bulut
Rachel and Michael Cargo
Erica Karlin and Garrett Deninno
Teresa Chuang and Craig Emrick
Joanna Humphrey Flynn
and Bryan Flynn
Meaghan and Benjamin Hildreth
Viva and Geoffrey Hyatt
Lynn and William Kargman
Julia Karol

Jeremy Macdonald
 Justine Macdonald
 Karen and Kevin Manning
 Andrea Miner and Jordan Romano
 Nancy and Chris Price
 Bansi Shah and Charles Resor
 Nilou Khoobehi and
 Hamid Salamipour
 Shelley Brown and Robert Savignol
 Gabbie and Adam Schlichtmann
 Sara Schlegel and Roy Schoenberg
 Rishva Mehta and Kanhai Shah
 Ritika Chandra and Monish Shah
 Susan Sipprelle and Dwight Sipprelle

Community Circle
(\$1-\$2,499)

Anonymous (9)
 Kathy Valair and Remy Aboko-Cole
 Shaea and Abdulla Alameri
 Hala AlEssa and Abdullateef AlBahar
 Liudmila Alekseeva
 Meeta Gulyani and Rupri Arora
 Sally Baines
 Norma and Patrick Barrett
 Cynthia and Dana Barrow
 Kathrene and Anderson Bell
 Jane Bell
 Ann Bennett
 Ann Berman
 Marta Vicarelli and Olivier Bernardi
 Uma and Shreedhar Bindingnavle
 Michela De Gennaro
 and Angelo Blasio
 Celeste and Hassan
 Bocchicchio-Chaudhri
 Ronia Bocchicchio-Chaudhri '26
 Susie and James Bonsey
 Merel Brandt Corstius
 Kit Brisson
 Marilyn and Robert Broege
 Patti and Allen Brown
 Sheila O'Keefe and Phillip Brown
 Elena Bafani
 Valerie Masin and Larry Buck
 Dinah Burgess
 Tim Caldwell
 Allison and Douglas Campbell
 Maria Monserrat Carlman
 Shawnta Carson
 John Casagrande
 Francis Cash
 Mary Cashman

Laura LaBonte and Reed Catlin
 Alba and Dean Cestari
 Yiyun Tsai and Raymond Chen
 Viviane Kim and Eric Wonyoung Choi
 Angel Chou
 Ellie and Brian Chu
 Juliet Clark
 Erin Baumann and
 Christopher Clements
 Caelainn Costello
 Margret Cooke and Dave Crowley
 Maja and Paul Currier
 Anne David
 Alexandra Sherman
 and Anthony De Ritis
 Vilma and James De Vellis
 Ramani Dealwis
 Samantha Dearborn
 Victoria Delmonico
 Terry and Nick DelPrato
 Audrey DeMilo
 Jessica and Daniel DeVlieger
 Nancy and Warren DeWitt
 Cristina Polo Diaz-Bazan
 and Salvador Diaz-Bazan
 Gwendolyn Swasey
 and Charles Dimino
 Caroline Doctor
 Ellen Doonan
 Jenna Larochelle and
 Christopher Dorin
 Cassandra and Alfred Duggan
 Lindsey Eckerd
 Marcia and Bill Eckerd
 Hannah Egan
 Zeina and Maged El-Malecki
 Amanda Erhard
 Catherine Ryan and Tom Erhard
 Cynthia and Michael Evanisko
 Wendy Falchuk
 Siyuan Fan
 Rohama Fanueal '29
 Carmela Fazzino-Farah
 and Fadi Farah
 Sarah DuBeau and Steve Farley
 Michelle Fawcett
 Kelly Feeney
 Anne Fuller and
 Alessandro Ferrero
 Emily Freeman
 Fiona Gain
 Aakanksha Khandelwal
 and Manish Gala

Diana and
 Georgios Galanakis
 Lydia Gallagher
 Elizabeth Kidder and
 Matthew Gallagher
 Stephanie Marton
 and Collin Galster
 Sharon Germana
 Elica Kyoseva
 and Yaniv Goder
 Torre Morgan and Evan Goldberg
 Elise and Ira Goldman
 Joyce Goldweitz
 Anthony Gounalis
 Melissa and Anthony Greco
 Sofia Greco '29
 Kelly Smith and Chris Grimley
 Nicole Gsell
 Katherine Gudiel
 Nedra and Richard Gusenburg
 Gloria Smith and Samuel Hagan
 Azhar Halabi-Fisher
 Jackie and Adam Hall
 Claire Harris
 Cynthia and Jon Harris
 Alida Jileta and Kevin Hart
 Giuliana and Ben Hartwell
 Cristina Zupcu and Timothy Harvey
 Melissa and Eric Hazen
 Sara Siadat and Majid Heidarpour
 Katherine Hein
 Rachel and Matthew Henry
 Kevin Hensley
 Luz Hernandez Munguia
 and Luis Hernandez
 Grace Hoefs
 Tara Hofherr
 Rallee Holt
 Emmy Graber and Peter Hruby
 Kelsey Iwanicki
 Rekha Iyengar
 Alexandra and Jeremiah Johnson
 Jeongmin Yeon and Donguk Jung
 Richard Junghans
 Lucy Kapples
 Rona and Allen Kasen
 Marybeth Egan and Evan Keefe
 Ambika Patni and Scott Kennedy
 Jennifer and Alex Khoury
 Cindy Khozozian
 Linda Kilpatrick
 Eunice Kim

CUMULATIVE GIVING

Gifts by Level

Community Circle (continued)

Brittany King
Carly Klepp
Emmy Lacroix '26
Jamie Lacroix
Matthew Lacroix
Brian Larivee
Emily Lashbrook
Ingrid Hammond and Jeff Lau
Ellie Leahy
Meredith Levine
Birgit Wurster and Aaron Luckman
Anastasia Lutkevich
Cynthia Lyons
Alexis MacArthur
Jennifer Bencivenga
and Craig MacDonald
Amy and Michael MacDougall
Melissa and Ryan Mahoney
Ainsley Malloes
Ashley Malloy
Melani Cammett and
Angelo Manioudakis
Leah Goldman and
Justin Manjourides
Hadley Catalano Manning
and Terry Manning
Joaquin Marquez
Marylou McCarthy
Kristine Churchill and
John McGuinness
Cindy Brown and Colin McKenna
Namrita Rai and Alek Mehta
Laura Mendelson
Winky and Dave Merrill
Nicole Miller
Dorothy Minsky*
Zinna Alekseeva and Jack Minsky
Linda and Richard Moeller
Maria and Ali Motamed
Alyssa Irving and Chris Mrazek
Laurie and Jason Mundt
Lisa and Andrew Musto
Anne-Marie Anagnostopoulos
and Shaw Natan
National Business Officers
Association
Trinh Nguyen
CiCi and Glen Nielsen
Kristi and Brian O'Connor
Shea O'Hill

Katherine O'Mealey
Libby Cobb O'Regan (Alum, 1986-89)
Heena and Murat Onay
Sarah Crowley and Sam Osmanovic
Meghan and Charles Ouellet
Lauren Paley
Maria and Thanos Pantazis
Christie Papazian
Alisha Lakhani and Nilay Patel
Prachi Shah and Tarang Patel
Genna Weinstein and Jonathan Paul
Sarah Pavell
Ann Conway and Edward Pearson
Daisy Penney
Maria Paulina Echandi Roman
and Alejandro Perez Sanchez
Julie Perlow
Sadie Perrin
Swan Mai and James Phan
Lisa MacVarish Pizzi and Eric Pizzi
Grayson Pizzi '25
Scarlett Pizzi '25
Kathleen and Whit Porter
Helen Potter
Lauren and Robert Powers
Mary and Ronald Pressman
Mariana and Ignacio Puente
Brian Race
Agnes Baudry and William Rae
Geofrey Louis Reilinger
Cassidy and Jonathan Rhodes
Veronika Ricken
Breighl and Benjamin Robbins
Louise Root-Robbins
and Ken Robbins
Kathryn and Garrett Rogers
Jenny and Ariel Rojas
Carla Mallqui and Cesar Rojas
Emma Rosier
Susan and Joel Rottner
Nicole Christopoulos
and Edmund Rucci
Erin Morse and Tommy Rzeznik
Louann Sanders
Greyson Sattelmair '28
Mackenzie Sattelmair '31
Anne Scholder
Polly and Dennis Selkoe
Sonia Deng Serbarinova
and Dmitri Serbarinov
Ami Maru and Shardule Shah

Anyah Shah '29
Bennett Shah '28
Harrison Shah '31
Rashmi and Som Shah
Jennifer Shea
Elizabeth Sheffer-Winig
and Anthony Winig
Eileen and Roy Sherman
Linda and Klaus Shigley
Lucas Simpson
The Smith Trial Family
Bridget Snickenger
and Alex Snickenger
Asma Soltani
Manel Soltani
Hyo and Timothy Song
Tiffany Skogstrom and Josh Squire
Kristen Standish
Haley Steffens
Matthew Suckow
Maria Tandazo Rigazio
Andres Tandazo
Aparna and Amar Tanna
Goldie Taylor
Tea Collection
Allyson Bloom and Sam Thakkar
Chelsa Tiff
Courtney and Jerome Tomaselli
Rose Tomaselli
Wyatt Tomlinson '31
Lynn and John Trice
Jourdan Trice
Sarah Trice
Deborah Tyrrell
Taylor Van Heidrich '25
Karen Yee and Lewis Wadsworth
Nicole and Bing Waldert
Emma Wallace '27
Jane Allard and John Walsh
Robbie Walton
Tiffany Cao and Bruce Wang
Susan and Kyle Weaver
Stacey Sherpe and Judd Weiskopf
Cessy Templeton and Bruce Wheeler
Stephanie and Ben Wild
Ashley Garove and Brian Williams
Jessica Wilson
Paige Wilson
Claudia and Michael Winston
Yung-Mae Yao
Pete Zetlan

*Deceased

Young Alumni Leadership Circle (\$100 and above)

Max Aboko-Cole '10
Samer Farah '18
Sofia Farah '21
Lucy Jordan '20
Mark Jordan '22
Nepheli Pantazis '25
Theoni Pantazis '23
Beatrix C. Selkoe '23

Kingsley Club (Alumni Gifts of any level by the classes of 2009–2024)

Lincoln Hyatt '20
Colton McKenna '22
Eve Minsky '22
Nicole Minsky '18
Sam Minsky '20
Donal O'Connor '19

Mary O'Connor '22
Elizabeth O'Regan
Daniel Sherman '10
Isabella Wallace '22
Athena Yee-Wadsworth '19
Sofia Yee-Wadsworth '14

Grandfriends Day

On Friday, May 10, Kingsley once again opened its doors to grandparents, aunts, uncles, cousins, caregivers, and family friends, who visited students in their classrooms and got a peek into the Kingsley experience. This beloved annual tradition creates lasting family memories and gives grandfriends insight into our Montessori curriculum and environment.



Kindergarten Marathon

After Grandfriends Day, the entire community gathered along the Esplanade to cheer Kindergarteners in their symbolic “Marathon” dash towards First Grade and the joys of Kingsley’s Elementary program.



CUMULATIVE GIVING

Gifts by Constituency

Parents

Anonymous (9)
Shaea and Abdulla Alameri
Hala AlEssa and Abdullateef AlBahar
Mariana Albano
Lisle and Rob Albro
Heidi Makrionoti and
Thomas Antoniadis
Meeta Gulyani and Rupī Arora
Monique and Neil Austin
Erin and Nicholas Azrack
Norma and Patrick Barrett
Mariko Gillan and Aaron Beeler
Laura and Mark Begor
Marta Vicarelli and Olivier Bernardi
Betul Cam and Adam Berrey
Michela De Gennaro
and Angelo Blasio
Jennifer and Jeffrey Blecher
Celeste and Hassan
Bocchicchio-Chaudhri
Elizabeth McGonigle-Breen
and Trevor Breen
Beth and John Breslin
Elena Bafani
Ozden and Fatih Bulut
Allison and Douglas Campbell
Rachel and Michael Cargo
Lisa Miao and Rich Carona
Heather and Christian Carrillo
Hadley Catalano Manning
and Terry Manning
Laura LaBonte and Reed Catlin
Alba and Dean Cestari
Yiyun Tsai and Raymond Chen
Megan Donovan-Chien
and Kenneth Chien
Viviane Kim and Eric Wonyoung Choi
Erin Baumann and
Christopher Clements
Sarah Crowley and Sam Osancevic
Alexandra Sherman
and Anthony De Ritis
Vilma and James De Vellis
Victoria Delmonico
Erica Karlin and Garrett Deninno
Cristina Polo Diaz-Bazan and
Salvador Diaz-Bazan
Gwendolyn Swasey
and Charles Dimino

Stacylyn and Michael Doore
Jenna Larochelle
and Christopher Dorin
Cassandra and Alfred Duggan
Lindsey Eckerd
Zeina and Maged El-Malecki
Ghita Akkar and Morad Elhafed
Alaska and Paul Elia
Morgan and Andrew Elzinga
Teresa Chuang and Craig Emrick
Amanda Erhard
Catherine and Keith Farrow
Anne Fuller and Alessandro Ferrero
Lissy Hu and Stephen Fiascone
Joanna Humphrey Flynn
and Bryan Flynn
Aakanksha Khandelwal
and Manish Gala
Meg and Nicholas Galat
Elizabeth Kidder and
Matthew Gallagher
Stephanie Marton and Collin Galster
Courtney and Daniel Gedney
Elica Kyoseva and Yaniv Goder
Torre Morgan and Evan Goldberg
Ting Zhang and Dan Gong
Melissa and Anthony Greco
Kelly Smith and Chris Grimley
Carly Yue Wu and
Laurence Groot Bruinderink
Abby Fierman and Mike Grossman
Maggie and Kyle Guinivan
Gloria Smith and Samuel Hagan
Amy Brisson Haley
and Christopher Haley
Jackie and Adam Hall
Alida Jileta and Kevin Hart
Giuliana and Ben Hartwell
Cristina Zupcu and Timothy Harvey
Sara Siadat and Majid Heidarpour
Rachel and Matthew Henry
Luz Hernández Munguia
and Luis Hernández
Marivi Crespo Moreira and
Alvaro Herreros Arregui
Meaghan and Benjamin Hildreth
Rebecca and Evan Hornbuckle
Roxi and Evan Horton
Emmy Graber and Peter Hruby
Jessica and John Jacobs

Regina and Michael Jammen
Alexandra and Jeremiah Johnson
Jeongmin Yeon and Donguk Jung
Richard Junghans
Melissa and Paul Karger
Ashley and Wesley Karger
Kati Kargman and Richmond Holden
Julia Karol
Anj Iyengar and Jonny Kasen
Lisa Cavicchioli and Matt Katz
Marybeth Egan and Evan Keefe
Ambika Patni and Scott Kennedy
Jennifer and Alex Khoury
Jill Ozzie and Patrick Kinsel
Xiao Wei and Eric Ko
Susie and Patrick Korb
Katie and William Krause
Jamie Lacroix
Matthew Lacroix
Brian Larivee
Ingrid Hammond and Jeff Lau
Tara Murphy and Luke LeSaffre
Lucy Moon-Lim and Richard Lim
Marlena and Robert Love
Birgit Wurster and Aaron Luckman
Sarah and Thomas Lyons
Jennifer Bencivenga
and Craig MacDonald
Jeremy Macdonald
Justine Macdonald
Fabienne Courtois
and Matthew Maddess
Christina and Nick Manice
Leah Goldman and
Justin Manjourides
Karen and Kevin Manning
Anna and Patrick Marchek
Amy Flaster and Elliot Mattingly
Katie and Jeff McDonald
Kristine Churchill and
John McGuinness
Namrita Rai and Aalek Mehta
Cara Sipprelle and Jake Merrill
Zinna Alekseeva and Jack Minsky
Vivian Arias and Stephen Moeller
Erin Morse and Tommy Rzeznik
Maria and Ali Motamed
Lisa and Andrew Musto
Anne-Marie Anagnostopoulos
and Shaw Natan

Laura and Tait Nielsen
 Ali and Phil O'Rourke
 Heena and Murat Onay
 Meghan and Charles Ouellet
 Felicia and Joe Pagliuca
 Angela and Hem Patel
 Alisha Lakhani and Nilay Patel
 Prachi Shah and Tarang Patel
 Genna Weinstein and Jonathan Paul
 Daisy Penney
 Maria Paulina Echandi Roman
 and Alejandro Perez Sanchez
 Molly and Brian Peterson
 Mariana and Carmine Petrone
 Caitlin McGovern and Conor Pigott
 Lisa MacVarish Pizzi and Eric Pizzi
 Tina and Ross Porter
 Lauren and Robert Powers
 Nancy and Chris Price
 Emily and Graham Proud
 Mariana and Ignacio Puente
 Agnes Baudry and William Rae
 Dane Rasmussen and Mike Leslie
 Kate and Charlie Reichenbach
 Geoffrey Louis Reilinger
 Bansi Shah and Charles Resor
 Cassidy and Jonathan Rhodes
 Breighl and Benjamin Robbins
 Adriana Roca and Nicolas Rodriguez
 Kathryn and Garrett Rogers
 Jenny and Ariel Rojas
 Carla Mallqui and Cesar Rojas
 Andrea Miner and Jordan Romano
 Lauren and Josh Rottner
 Nicole Christopoulos
 and Edmund Rucci
 Lara Sinicropi-Yao
 and Jake Sattelmair
 Ella and Tedd Saunders
 Shelley Brown and Robert Savignol
 Gabbie and Adam Schlichtmann
 Sara Schlegel and Roy Schoenberg
 Elizabeth Scholder
 Matthew Scholder
 Cristina Lopez and David Schor
 Emma Baumgartner
 and Brian Schwartz
 Dina and Greg Selkoe
 Sonia Deng Serbarinova
 and Dmitri Serbarinov
 Rishva Mehta and Kanhai Shah
 Ritika Chandra and Monish Shah

Jessica and Nik Shah
 Ami Maru and Shardule Shah
 Debra and Erich Shigley
 Carrie DeWitt and Jamie Simchik
 Danielle Frissell and Adam Slutsky
 Christine Olsen and Robert Small
 Bridget Snickenberg
 and Alex Snickenberg
 Lily Khasanova Sodhi
 and Karan Sodhi
 Hyo and Timothy Song
 Kate and Jamie Stoddard
 Kaitlin and Scott Strode
 Geunwon Kim Sun and Harry Sun
 Amy and Andrew Szczurowski
 Lisa and Patrick Taffe
 Hamasat Gheddaf Dam
 and Priyank Taneja
 Aparna and Amar Tanna
 Goldie Taylor
 Sarah Clinton and Mike Tilford
 Courtney and Jerome Tomaselli
 Daryn Lewis and Keith Tomlinson
 Nicole Barsalona and Mike Tonelli
 Jourdan Trice
 Sarah Trice
 Anwita and Omkar Vaidya
 Nicole and Bing Waldert
 Kristin and Jon Wallace
 Jane Allard and John Walsh
 Tiffany Cao and Bruce Wang
 Kumika and Buck Watia
 Stacey Sherpe and Judd Weiskopf
 Stephanie and Ben Wild
 Ashley Garove and Brian Williams
 Claudia and Michael Winston
 Supriya and Rathin Yagnik
 Adelle Chang and Eddie Yoon

Grandparents

Liudmila Alekseeva
 Cynthia and Dana Barrow
 Ann Bennett
 Uma and Shreedhar Bindingnavle
 Marilyn and Robert Broege
 Patti and Allen Brown
 Dinah Burgess
 Ramani Dealwis
 Nancy and Warren DeWitt
 Marcia and William Eckerd
 Elise and Ira Goldman
 Wendy and Anthony Gounalis

Nedra and Richard Gusenburg
 Azhar Halabi-Fisher
 Diane and Bob Hildreth
 Pamela Humphrey
 Lynn and William Kargman
 Rona and Allen Kasen
 Cynthia Lyons
 Marylou McCarthy
 Winky and Dave Merrill
 Dorothy Minsky*
 Linda and Richard Moeller
 CiCi and Glen Nielsen
 Mary and Ronald Pressman
 Louise Root-Robbins
 and Ken Robbins
 Susan and Joel Rottner
 Catherine Ryan and Tom Erhard
 Louann Sanders
 Anne Scholder
 Polly and Dennis Selkoe
 Rashmi and Som Shah
 Elizabeth Sheffer-Winig
 and Anthony Winig
 Linda and Klaus Shigley
 Susan and Dwight Sipprelle
 Fran and Dennis Slutsky
 Lynn and John Trice
 Anthony Winig
 Yung-Mae Yao

Alumni Families

Kathy Valair and Remy Aboko-Cole
 Kathrene and Anderson Bell
 Cindy Brown and Colin McKenna
 Sheila O'Keefe and Phillip Brown
 Valerie Masin and Larry Buck
 Maureen and Luke Burns
 John Casagrande
 Ellie and Brian Chu
 Margret Cooke and Dave Crowley
 Maja and Paul Currier
 Jessica and Daniel DeVlieger
 Cynthia and Michael Evanisko
 Carmela Fazzino-Farah
 and Fadi Farah
 Sharon Germana
 Melissa and Eric Hazen
 Katherine Hein
 Charlotte and Kurt Hemr
 Gabriela Cesaro
 and César Hernandez
 Viva and Geoffrey Hyatt

*Deceased

CUMULATIVE GIVING

Gifts by Constituency

Alumni Families (continued)

Alyssa Irving and Chris Mrazek
Tara and Reid Jordan
Amy and Michael MacDougall
Melissa and Ryan Mahoney
Melani Cammett and
Angelo Manioudakis
Michael Mars
Valerie Masin and Larry Buck
Cindy Brown and Colin McKenna
Laura Mendelson
Alyssa Irving and Chris Mrazek
Laurie and Jason Mundt
Kristi and Brian O'Connor
Maria and Thanos Pantazis
Christie Papazian
Alexandra and Minesh Patel
Ann Conway and Edward Pearson
Swan Mai and James Phan
Kathleen and Whit Porter
Alexis and Alex Rogers
Nilou Khoobehi and Hamid
Salamipour
Eileen and Roy Sherman
Tiffany Skogstrom and Josh Squire
Kristen Standish
Allyson Bloom and Sam Thakarar
The Smith Trial Family
Eva Douzinas Veson
John Veson
Karen Yee and Lewis Wadsworth
Susan and Kyle Weaver
Nicole Zatlyn and Jason Weiner
Cessy Templeton and Bruce Wheeler

Alumni

Max Aboko-Cole '10
Sofia Farah '18
Samer Farah '21
Lincoln Hyatt '20
Lucy Jordan '20
Mark Jordan '22
Colton McKenna '22
Nicole Minsky '18
Sam Minsky '20
Eve Minsky '22
Donal O'Connor '19
Mary O'Connor '22
Libby Cobb O'Regan (Alum,
1986-1989)

Theoni Pantazis '23
Nepheli Pantazis '25
Beatrix C. Selkoe '23
Daniel Sherman '10
Isabella Wallace '22
Sofia Yee-Wadsworth '14
Athena Yee-Wadsworth '19

Students

Ronia Bocchicchio-Chaudhri '26
Rohama Fanueal '29
Sofia Greco '29
Emmy Lacroix '26
Grayson Pizzi '25
Scarlett Pizzi '25
Greyson Sattelmair '28
Mackenzie G. Sattelmair '31
Anya Shah '29
Bennett Shah '28
Harrison Shah '31
Wyatt Tomlinson '31
Taylor M. Van Heidrich '25
Emma Wallace '27

Faculty & Staff

Anonymous (4)
Sally Baines
Ann Berman
Merel Brandt Corstius
Kit Brisson
Tim Caldwell
Maria Monserrat Carlman
Shawnta Carson
Francis Cash
Mary Cashman
Hadley Catalano-Manning
Angel Chou
Juliet Clark
Caelainn Costello
Sarah Crowley
Anne David
Samantha Dearborn
Nick DelPrato
Audrey DeMilo
Caroline Doctor
Ellen Doonan
Cassandra Duggan
Hannah Egan
Wendy Falchuk
Siyuan Fan

Steve Farley
Michelle Fawcett
Emily Freeman
Fiona Gain
Diana and Georgios Galanakis
Lydia Gallagher
Joyce Goldweitz
Nicole Gsell
Katherine Gudiel
Claire Harris
Kevin Hensley
Grace Hoefs
Tara Hofherr
Rallee Holt
Kelsey Iwanicki
Lucy Kapples
Cindy Khozozian
Eunice Kim
Brittany King
Carly Klepp
Jamie Lacroix
Emily Lashbrook
Anastasia Lutkevich
Alexis MacArthur
Ainsley Mallows
Ashley Malloy
Joaquin Marquez
Nicole Miller
Erin Morse
Trinh Nguyen
Shea O'Hill
Katherine O'Mealey
Heena Onay
Lauren Paley
Sarah Pavell
Julie Perlow
Sadie Perrin
Helen Potter
Brian Race
Cassidy Rhodes
Veronika Ricken
Jennifer Shea
Asma Soltani
Manel Soltani
Josh Squire
Haley Steffens
Matthew Suckow
Maria Tandazo Rigazio
Chelsa Tifft
Courtney Tomaselli

Deborah Tyrrell
Robbie Walton
Jessica Wilson
Paige Wilson
Pete Zetlan

Friends of Kingsley

Anonymous
Susie and James Bonsey,
Past Fac/Staff
Kelly Feeney, Friend
Cynthia and Jon Harris,
Relative of Fac/Staff
Rekha Iyengar, Grandfriend
Linda Kilpatrick, Grandfriend
Ellie Leahy, Grandfriend
Meredith Levine, Friend
Emma Rosier,
Past Fac/Staff
Lucas Simpson, Friend

Andres Tandazo,
Relative of Fac/Staff
Rose Tomaselli, Grandfriend

Corporations and Foundations

The Rudolph J. Torello Foundation
The 72 Fund
Tea Collection
National Business Officers
Association

Matching Gift Contributors

Adage Capital Management
Advent International
Bain & Company
Bain Capital
Bank of America
BNY Mellon
Breckinridge Capital Advisors
Cambridge Pediatric Dental
Associates

Epic Games
Fidelity Investments
Google
Harbourvest Partners
Manulife Insurance Company
Merck & Co.
MFS Investment Management
Microsoft
Otsuka Pharmaceutical Co., Ltd.
Piper Sandler Companies
Robert Half
Takeda Pharmaceuticals
The Baupost Group
The Charles Stark Draper
Laboratory, Inc.
Thermo Fisher Scientific
Wayfair
Wellington Management Company

Tribute Gifts

Marilyn and Robert Broege
*In Honor of Wilson E. Doore
and Edith E. Doore*

Laura LaBonte and Reed Catlin
In Honor of Katherine Catlin

Kelly Feeney
In Honor of the Tomaselli Family

Wendy and Anthony Gounalis
In Honor of Vivianna C. Johnson '29

Cynthia and Jon Harris
In Honor of Claire Harris

Pamela Humphrey
In Memory of John Humphrey

Meredith Levine
In Honor of the Advancement Team

Zinna Alekseeva and Jack Minsky
*In Honor of Minsky graduates
and students*

Kathleen and Whit Porter
In Honor of Tara Jordan

Louise Root-Robbins
and Ken Robbins
In Honor of Phyllis Robbins '29

Debra and Erich Shigley
In Honor of Camden C. Shigley '26

Andres Tandazio
In Honor of Maria Tandazo Rigazio

E. Jane and Robert Trial
*In Memory of Charlotte
and Lowell Kingsley*

Nicole and Bing Waldert
In Honor of Kingsley Teachers

Elizabeth Sheffer-Winig
and Anthony Winig
*In Honor of Alora Allard-Walsh '27
and Freya Allard-Walsh '31*



DEPARTING TRUSTEES

All four departing trustees were motivated by a deep belief in Kingsley and a strong desire to be of service to the school. They helped lead the School during a dynamic era that included some of the most significant moments of the School's recent history. They guided us through the COVID-19 pandemic, our AISNE re-accreditation, the Exeter acquisition, our self-study, and the creation of the latest Strategic Plan. Their cumulative positive impact on Kingsley is tremendous, as is our appreciation for their courage, devotion, and constancy. We thank and celebrate these leaders and friends of the School.

Heather Carrillo

July 2014–June 2024, Treasurer July 2017–June 2024



As Board Treasurer, Heather was a key partner for our Chief Financial Officer and Head of School, asking vital questions and making sure we reviewed important practical considerations surrounding school finances. During the pandemic, she collaborated closely with the Chief Financial Officer to make sure that Kingsley went above and beyond to keep our community safe and healthy without sacrificing on academic and programmatic programs. She worked to ensure that Kingsley could establish a third campus and take every appropriate COVID precaution, while maintaining a strong financial foundation. As we explored the purchase of Exeter, she rigorously interrogated the underlying assumptions of the projections, and her approach helped make sure our plans were feasible and that we had a solid fiscal foundation.

Tara Jordan

July 2016–June 2024, Board Chair July 2020–June 2024



It is hard to overstate the impact of Tara Jordan's leadership at Kingsley. As an experienced educator, she brought to the Board a deep understanding of the nuances, complexities, and joys of delivering on our School's mission. Her insights and guidance proved invaluable to the Head of School, the Chief Advancement Officer, and other administrators. She was instrumental in the creation of the Strategic Plan and the early implementation of key elements thereof. As Board Chair during our initial exploration of the Exeter purchase and through the first phase of that fundraising campaign, Tara showed grit, determination, and unshakable faith in the Kingsley mission and purpose. Her optimism, always paired with realism, and her role as a tireless ambassador for Kingsley were pivotal factors in the ultimate success of the project. She was a highly collaborative Board Chair, who centered her leadership in our shared values and leaves a legacy of heart, humor, humility, and humanity.

Maria Pantazis

July 2015–June 2024



Maria, pictured with her family in an archival Kindergarten Graduation photo, brought an analytical, strategic, and forward-thinking approach to her work on the Board. As a member of the Committee on Trustees, Maria helped ensure that our governing body was populated by individuals with a broad range of skills, capacities, and perspectives. She is well known for hosting newly-admitted families and guiding their entrance to our school and, indeed, myriad Kingsley families credit Maria with helping them feel welcomed at Kingsley. As a Development Committee Co-Chair during a leadership transition in the Advancement office, Maria not only led strategy, but rolled up her sleeves to facilitate program implementation and volunteer oversight. She jointly led the development efforts during the record-setting 2020–21 Annual Fund campaign, using a highly personal approach that was her signature. Thanks to her efforts, we are a more stable, strong, and secure School.

Tedd Saunders

July 2014–June 2024



Tedd brought heart and sincerity to his work on the Board. He regularly hosted the Board in meeting spaces at the Lenox Hotel, and much important progress was made in those rooms. Tedd took the long view, leading with compassion and humanity as core drivers of progress. Tedd's guidance was informed by his deep understanding of the Back Bay neighborhood and community culture. Tedd's kindness, insights, and empathy aligned his Board work with core Kingsley values and made him a beloved ambassador for the School.

Pete Zetlan

21 Years at Kingsley



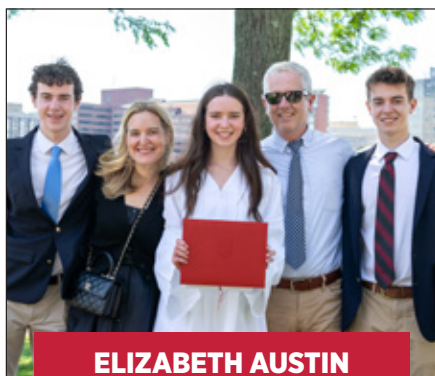
After a 21-year career at Kingsley, Pete Zetlan, Director of Early Childhood and Montessori Education, departed Kingsley to become Head of School at Cornerstone Montessori School in New Hampshire. During his 16 years as a Lead Teacher in the Lower Elementary classroom, three years as a Curriculum Coordinator, and six years as an Education Director in both the Lower Elementary and Early Childhood divisions, Pete's service to Kingsley was anchored by an unwavering dedication to centering children in his work, supporting and mentoring colleagues, and partnering with families through celebrations and challenges. While Pete's steady, warm, and kind presence will be deeply missed, his impact will always be felt at Kingsley, and our gratitude is likewise lasting.

KINGSLEY ALUMNI

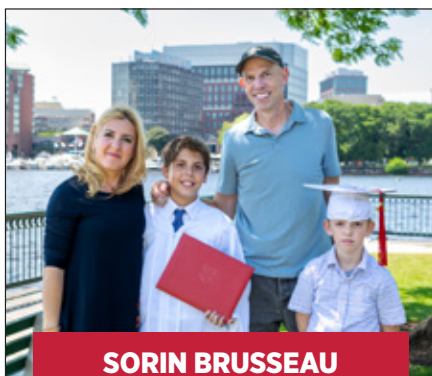
GRADUATING CLASS OF 2024

Congratulations to the Kingsley Class of 2024. We wish you all the best at your Next Schools and in your future endeavors. Once a Lion, always a Lion—so, stay in touch!

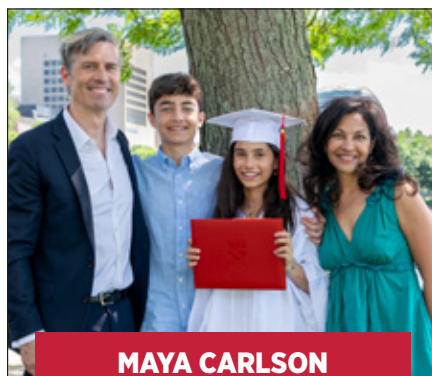
Thank you to our graduation ceremony musicians: alumni Alex Magadan '16, violin, and Akira Lonske '17, piano, and student Bryn O'Rourke '26, piano.



ELIZABETH AUSTIN
BB&N



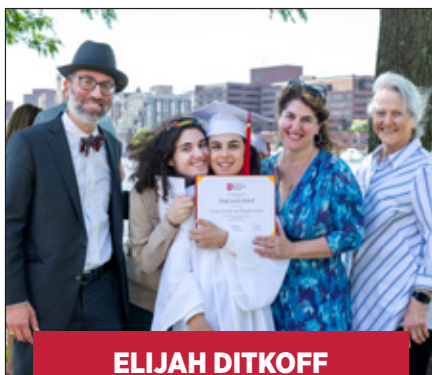
SORIN BRUSSEAU
ROXBURY LATIN



MAYA CARLSON
NOBLE & GREENOUGH



AUDREY CARRILLO
MEADOWBROOK



ELIJAH DITKOFF
THE PARK SCHOOL



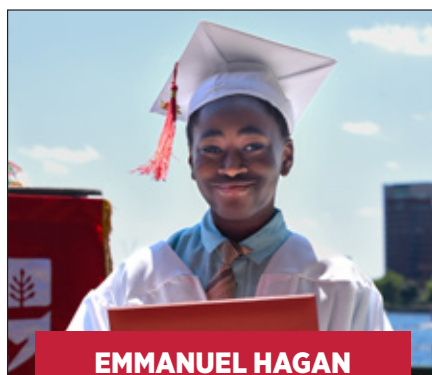
TALIA GOLDBERG
BB&N



MAE GRIMLEY
BOSTON LATIN SCHOOL



JACK GROSSMAN
BELMONT HILL



EMMANUEL HAGAN
ROXBURY LATIN



DYLAN HART
BB&N



AUSTIN HORNBUCKLE
BELMONT HILL



LUCY JACOBS
THE PARK SCHOOL



LEIGHTON JAMMEN
NEWTON COUNTRY DAY



MICHAEL JAMMEN
THE FENN SCHOOL



MERTON MINSKY
BEAVER COUNTRY DAY



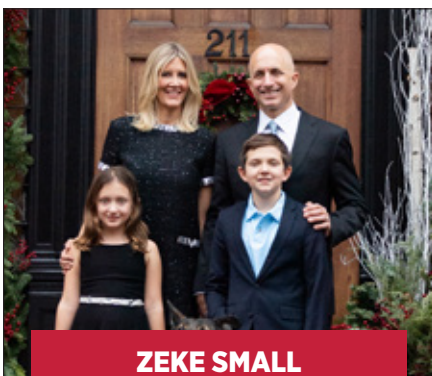
ISABELLA ROJAS
DANA HALL



NINA SAUNDERS
TRAVELING THE WORLD



NOAH SAUNDERS
TRAVELING THE WORLD



ZEKE SMALL
NOBLE & GREENOUGH



AREN VAIDYA
DEXTER SOUTHFIELD



KINGSLEY ALUMNI

ALUMNI PANEL: THE KINGSLEY EFFECT

In November 2023, Kingsley students and families gathered in the Exeter Community Space to hear from a panel of recent graduates about the effect Kingsley has had on their lives. Alumni from the Classes of 2019–2023 shared highlights of their Upper Elementary experience and how Kingsley uniquely prepared them to thrive academically, personally, and socially in their next schools and beyond. It was especially meaningful for our Sixth Grade students to glean insights about the application process and the transition to middle school life. Thank you to our alumni panelists Maddy Blatt, Ryan Chang-Wu, Lincoln Hyatt, and Vera Zatlyn-Weiner.



ALUMNI REUNION

In May, Sixth Grade students and Kingsley alumni in middle and high school returned to campus for another high-energy Alumni Reunion. Attendees played ping pong and foosball in the Community Space, pored over old Kingsley Red Books, and enjoyed pizza with friends and former teachers. They were thrilled to tour their Fairfield and Exeter classrooms, where they gasped over the “tiny” student chairs, left notes for teachers and younger friends, and reminisced about their Kingsley years.



KINGSLEY ALUMNI

ALUMNI FEATURE

Coming Full Circle: Caroline Humphrey Clifford '99, P'34

For Kingsley alumna Caroline Humphrey Clifford '99, enrolling her older daughter, Charlotte, in Kingsley's Toddler program this fall was a full circle experience. Her time at Kingsley "was integral to the magic of being a child," and she sees the School's impact in all areas of her life—personally, academically, socially, and in her family ties. When it came time to consider preschools for Charlotte, "I didn't look anywhere else."

Caroline was a member of the first graduating class to experience the full Kingsley Montessori School journey from Preschool through Sixth Grade.* She says, "The freedom to approach my education, and the trust that I and all students received from the teachers, was hugely impactful in my development." After Kingsley, Caroline attended the Brimmer and

May School for middle and high school. She earned her B.A. in Philosophy and English from Georgetown University, and her J.D. at Suffolk University Law School with a concentration in trial and appellate advocacy. After nearly six years as an Assistant District Attorney in the Suffolk County District Attorney's Office, today she is Vice-President & Counsel at Zakim Strategies, where she leads the internal investigations, criminal justice, and security practice.

As an alumna, Caroline stayed involved with the School, even returning to give the Kingsley graduation speech before leaving Boston for college. More recently, during the School's 85th anniversary year, Caroline, along with her brother-in-law, Bryan Flynn P'31, helped launch a new and growing effort to reconnect with and re-engage Kingsley alumni, aimed at better understanding the many paths our former students take, and celebrating their unique post-Kingsley journeys. This is a fitting role for Caroline, who is still in touch with multiple Kingsley classmates, especially her lifelong best friend, AlexaRae Wright, with whom she attended Kingsley from start to finish. They attended law school together and worked side by side in the DA's office. AlexaRae, too, has prioritized a Montessori education for her own children.

Caroline's transformative Kingsley experience inspired her family's efforts to sustain and strengthen the School. For many years after she had graduated, her late father—education entrepreneur, business leader, and nonprofit champion John Humphrey—provided significant strategic support for Kingsley leaders. Long before Caroline's sister, Joanna Humphrey Flynn P '31, enrolled her own two children at Kingsley, Joanna volunteered her marketing and PR skills to help articulate the School's unique educational model following its transition to Montessori.



Caroline with her husband, Christian, daughter Charlotte '34, and the newest member of the family, Camille. Photo by Samantha Yanofsky



Caroline (front row, second from the left), in an undated photo from her Kingsley days

More recently, Caroline and Joanna's mother, Pamela Humphrey, played a key role in encouraging, shaping, and completing the School's philanthropic campaign to purchase 26 Exeter Street.

Coincidentally, or perhaps not so coincidentally, Caroline's husband, Christian, whom she met in law school, also attended a Montessori school and shares her belief in its principles and practices. For Caroline, "My curiosity for learning was created in Montessori," and, thus far, the same has been true for her daughter, Charlotte. Caroline observes that, "Her independent personality is the right match for a Montessori education. I have noticed a huge difference in her ability to listen and follow directions at home. It has been wonderful for her social and emotional development."

For more than three decades, the Humphrey family has witnessed the power of a Kingsley education, and has been moved to be involved in supporting and sustaining the School. Indeed, touring Fairfield last year during Charlotte's application process was a poignant experience for Caroline, reinforcing the unique role that Kingsley has played in her life and the lives of family and friends, and affirming her decision to enroll her own daughter here. "When I walked down the stairs to the Toddler classrooms, touching the turtle and the owl on the stairs brought back a rush of happy memories of my time there."

*Founded as The Kingsley School in 1938, Kingsley began implementing the Montessori model in the mid-1980s and, in 1989, fully embraced the method and changed its formal name accordingly.

KINGSLEY ALUMNI

ALUMNI FEATURE

A Foundation of Creativity and Care: Libby Cobb O'Regan (1986–1989)

“Kingsley Montessori provided me with the foundational skills that I needed to be successful in my later academics and in my professional career, most notably the ability to plan, organize, and be a creative thinker and problem solver. I vividly remember the classrooms as a warm environment where we were encouraged to express ourselves freely. I can recall my teachers’ names with ease and know the impact they had on my writing, specifically. I truly feel grateful to have had this educational experience during my early years.”

Libby Cobb O'Regan is the founder of a marketing and public relations firm in Hilton Head Island, South Carolina where she focuses on nonprofit event



Libby Cobb O'Regan and her family today

marketing and fundraising. She is also the founder of The Celebration Projects, a nonprofit organization which provides birthday parties for children whose families are experiencing financial, physical, or mental hardship. She was previously Vice President of Brand Strategy & Creative for HC Brands, a Jacksonville, Florida-based e-commerce company. Libby is a graduate of the University of Michigan and earned a B.A. in Communication Studies and a B.F.A. in Printmaking, Fine Arts. She lives in Hilton Head Island with her husband, Mick, and their four children, ages 15, 14, 12, and 12.



c. 1987: Libby Cobb O'Regan (back row, far right) with classmates, including Elizabeth Fitzpatrick and Nicole Ciccone, next to Libby, and Chris Bennett, directly in front of her)

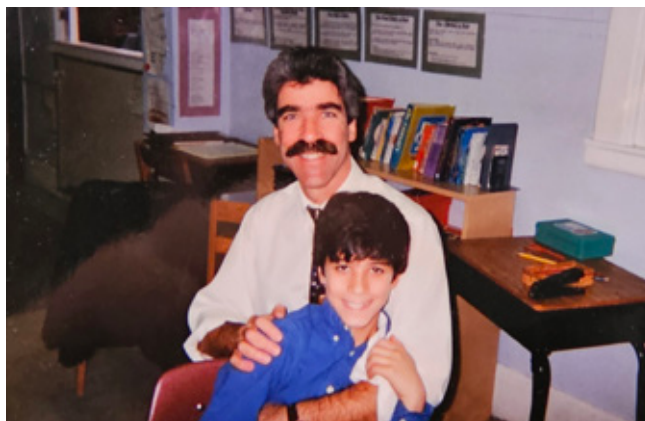
Libby's mother, Cynthia "Cynny" Evanisko played an important role in supporting the integration of Montessori into the Kingsley School. In his written reflections on the first 50 years of the Kingsley School, Lowell Kingsley recognized Cynny's contributions as a member of the Mission Committee, whose work "to further the integration of Montessori Preschool and Kingsley elementary grades" was essential to the establishment of Kingsley Montessori School.

ALUMNI FEATURE

From Kingsley to the Corporate World: Adam Vartikar '03

“For me, Kingsley was not simply a supportive environment to learn and grow, it was a repositioning of my relationship to education and social interactions. I came to Kingsley in the Fifth Grade from a “normal” school where teachers were disciplinarians and students were left to create their own hierarchies. In that environment, I gradually lost my sense of agency and resigned myself to a survival mindset.

At Kingsley, the respectful and loving posture of teachers and administrators to students, the beautiful learning spaces, and the self-directed approach to achievement gave me a new lease on childhood and, in turn, my life. Kingsley changed the way I saw my classmates and, over time, I came out of my cave and began to see every day as a new opportunity, rather than a slog.



From the archives: Adam and his dad in the former Upper Elementary classroom in Fairfield—now known as the Movement Room!

After college I committed to a life as an entrepreneur, where, once again, I get to see every day as an opportunity—and, once again, I feel the impact of my time at Kingsley. A friend summed up my approach to leadership by saying, ‘It seems like you try to make every company you run as much like a Montessori school as possible.’ Indeed, I’ve found that the closer I can keep my team’s culture tracking to my experience at Kingsley, the more successful we become. It turns out that the educational and social values that make Kingsley special are the same principles that drive camaraderie and innovation in all walks of life, especially the corporate world.”



Adam Vartikar today

Adam Vartikar is the Vice President of Patient Access at Med-Metrix, where he manages patient-facing, financial clearance, and pre-visit services. Previously, Adam co-founded and served as the CEO of PatientPal, founded and chaired the advocacy group Working Wealth, and was vice president of operations and patient experience at Longwood MRI Specialists, PC. After graduating from Kingsley, Adam attended the Buckingham Browne & Nichols School before earning his Bachelor of the Arts degree in Government from Harvard University.



A Kingsley Anthem

Throughout our 85th Anniversary school year, Kingsley Sixth Grade students Maya and Lucy worked with Diana (Gamet) Galanakis to write our new school song, “At Kingsley.” In April, Kingsley alumni parent Perry Geyer (Kyla ’16 and Sienna ’19) welcomed Maya, Lucy, and members of the Kingsley Band to his Cybersound Recording Studios for a professional recording of the song. We are delighted that “At Kingsley” will ring through our hallways for generations to come. Thank you, Maya, Lucy, and Ms. Galanakis! “It was a pretty amazing experience to share with my best friend, and an awesome opportunity to work with one of my favorite teachers. It was also an eye-opening experience, because I learned how much hard work and creativity it takes to make a song!” –Maya

GIVING BY THE NUMBERS

100%

All of Kingsley's
students benefit from
philanthropic giving

\$6,012,680

Total philanthropy
in 2023-24

2023-24 ANNUAL FUND

397

Total number of donors

\$1,090,293

Total contributions
to the Annual Fund

\$5,304

Average family gift

100%

Board of Trustees
participation

100%

Development Committee
participation

97%

Faculty & Staff
participation

93%

Parent
participation

EXETER CAMPAIGN

March 2023-January 2024*

138

Total number of gifts to
the Exeter Campaign

\$4,969,888

Total contributions to
the Exeter Campaign

*This campaign spanned two fiscal years, 2022-23 and 2023-24.

Thank You, Kingsley Community!



This is our first printed Impact Report in five years. Please let us know what you think!



CONTACT
Campus Locations:
26 Exeter Street
30 Fairfield Street
Boston, MA 02116
617-226-4900
KINGSLEY.ORG