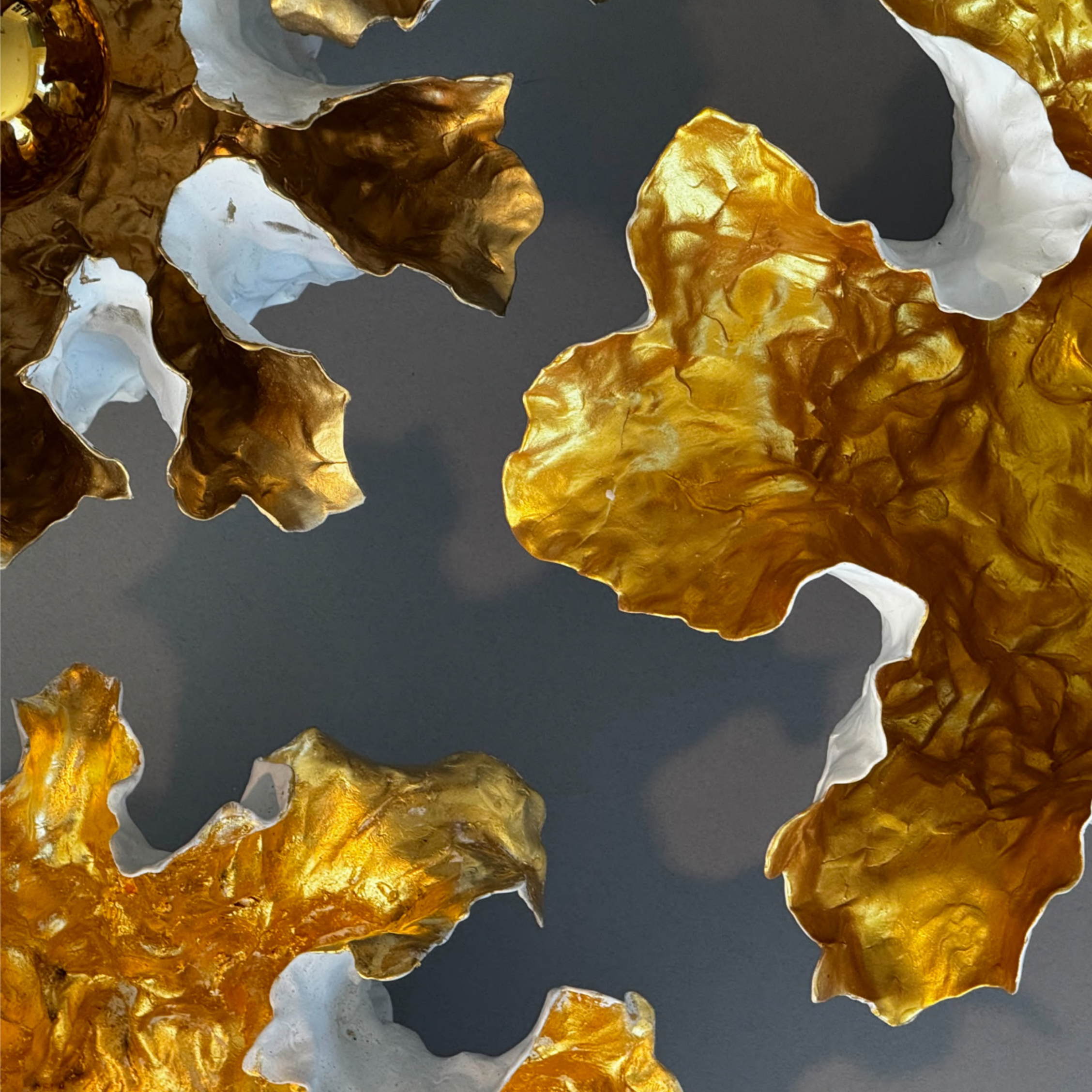




# Herbarium Collection





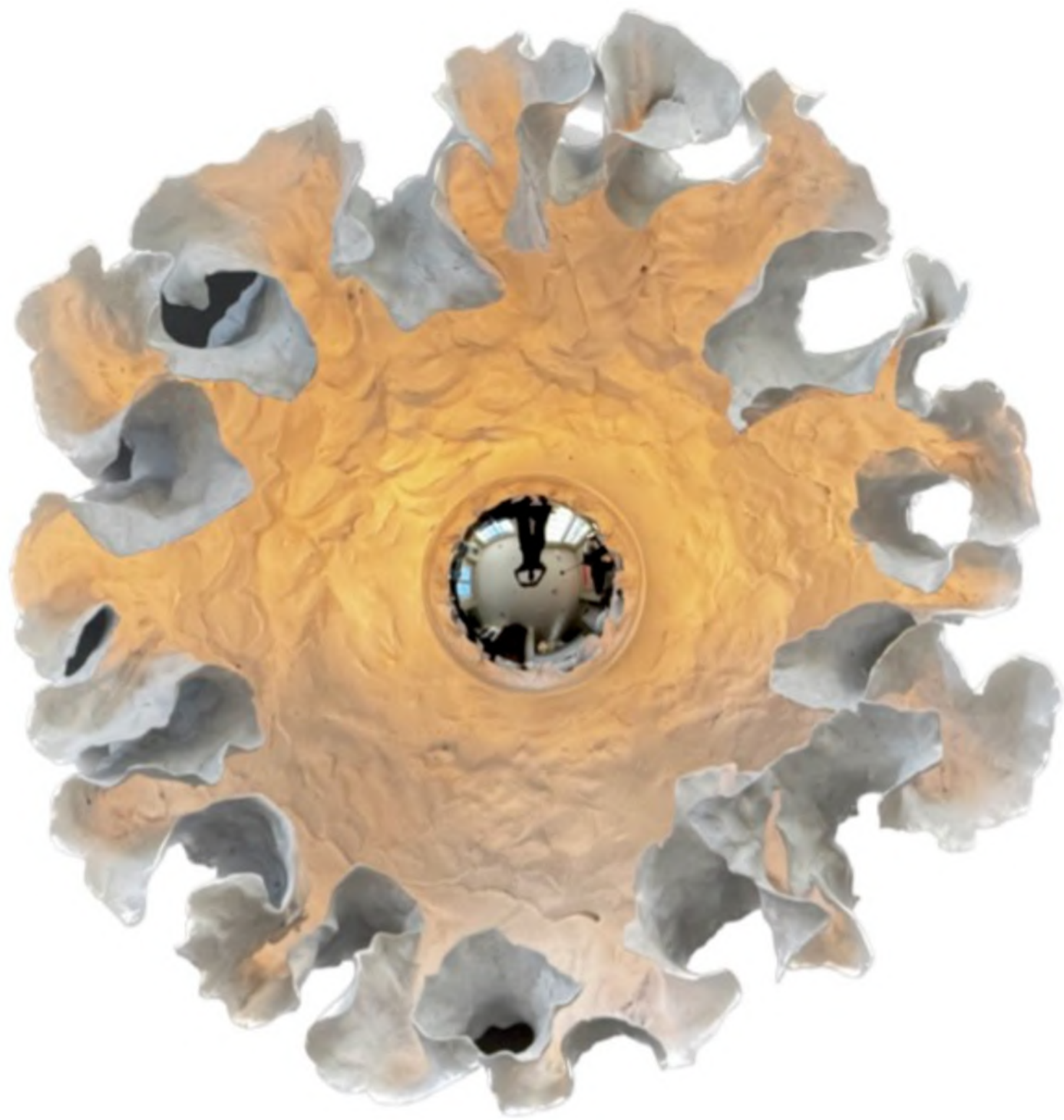


# Herbarium Collection

Hand Built Porcelain Lighting  
by Charles Burleigh

[charles@charlesburleigh.com](mailto:charles@charlesburleigh.com), 917.355.3022

[www.charlesburleighporcelain.com](http://www.charlesburleighporcelain.com), @burleighporcelain



# Herbarium Collection

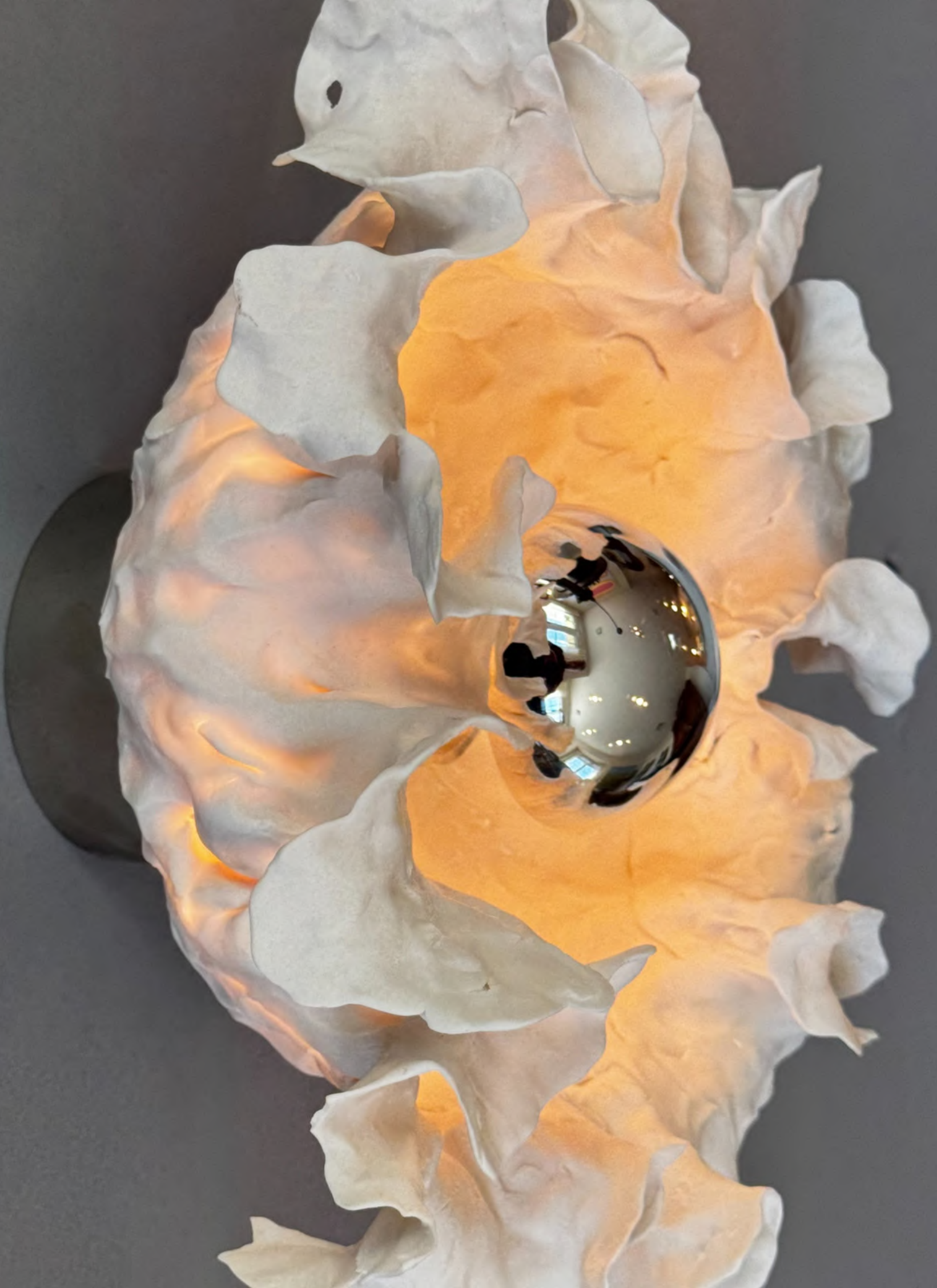
## Hand Built Porcelain Lighting by Charles Burleigh

Charles Burleigh was born into a family of artisans. His father, an experienced wood carver, used his expertise to create exacting reproductions of several early American clocks. His mother gilded components of the clocks and painted verre eglomise or reverse glass panels for them.

Charles' work is the culmination of a lifetime of observation, exploration and inspiration. Each piece in the Herbarium Collection begins as an unformed mass and through hand work reveals itself during the process of manipulation and creation, often reminiscent of the work of Tiffany or Gaudi. As a result, each piece is unique. Mr. Burleigh's work can be commissioned in a variety of glazed or unglazed finishes.

To take a block of unformed porcelain and manipulate it into form is an intimate process. It involves working the material in a mindful, tactile process that is less about the look than it is about the feel of the material. Extruding it, pinching it, plying it, allowing the porcelain to take form directly from the hand with minimal intervention. Creating organic forms as dictated by what the material will allow becomes the artistic expression. When working the porcelain images of Gaudi's or Tiffany's organic works can be seen in the formation of a piece as it evolves into its final form.

When lit from within the porcelain takes on an almost ethereal glow. The undulating surface varies the quality of the light further enhancing and defining the form of the piece. For this effect the work is bisque fired, fully fired and left unglazed, alternatively a clear glaze can be applied creating a gloss finish.





## Lisianthus Wall Mount

Hand built, high fire porcelain, when unglazed the undulating surface allows for the light to glow through the translucent porcelain, creating an ethereal effect.

Available in finishes shown; unglazed translucent, gold and green verdigris glaze or custom finishes on request

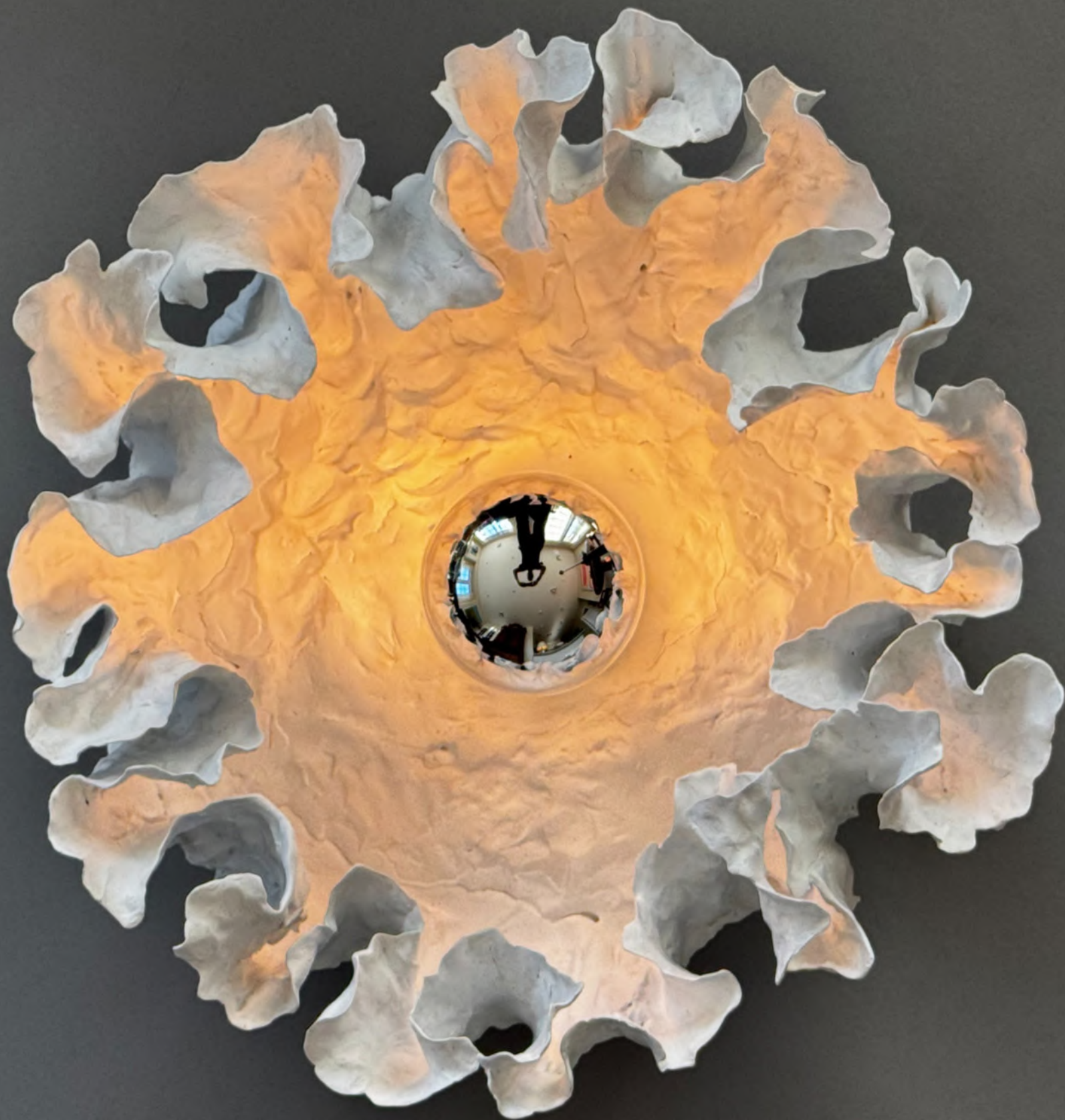
Metal base is available in matte brass or polished nickel

Lamping; 7 Watt LED, 60 watt equivalent, standard medium base, with gold or silver top, included.

13.5" diameter x 7" high, exact dimensions may vary given the hand worked process.

Mounting 4.5" diameter

Item #WS11





## Helianthus Wall Mount

Hand built, high fire porcelain, when unglazed the undulating surface allows for the light to glow through the translucent porcelain, creating an ethereal effect.

Available in finishes shown; unglazed translucent, gold and green verdigris glaze or custom finishes on request

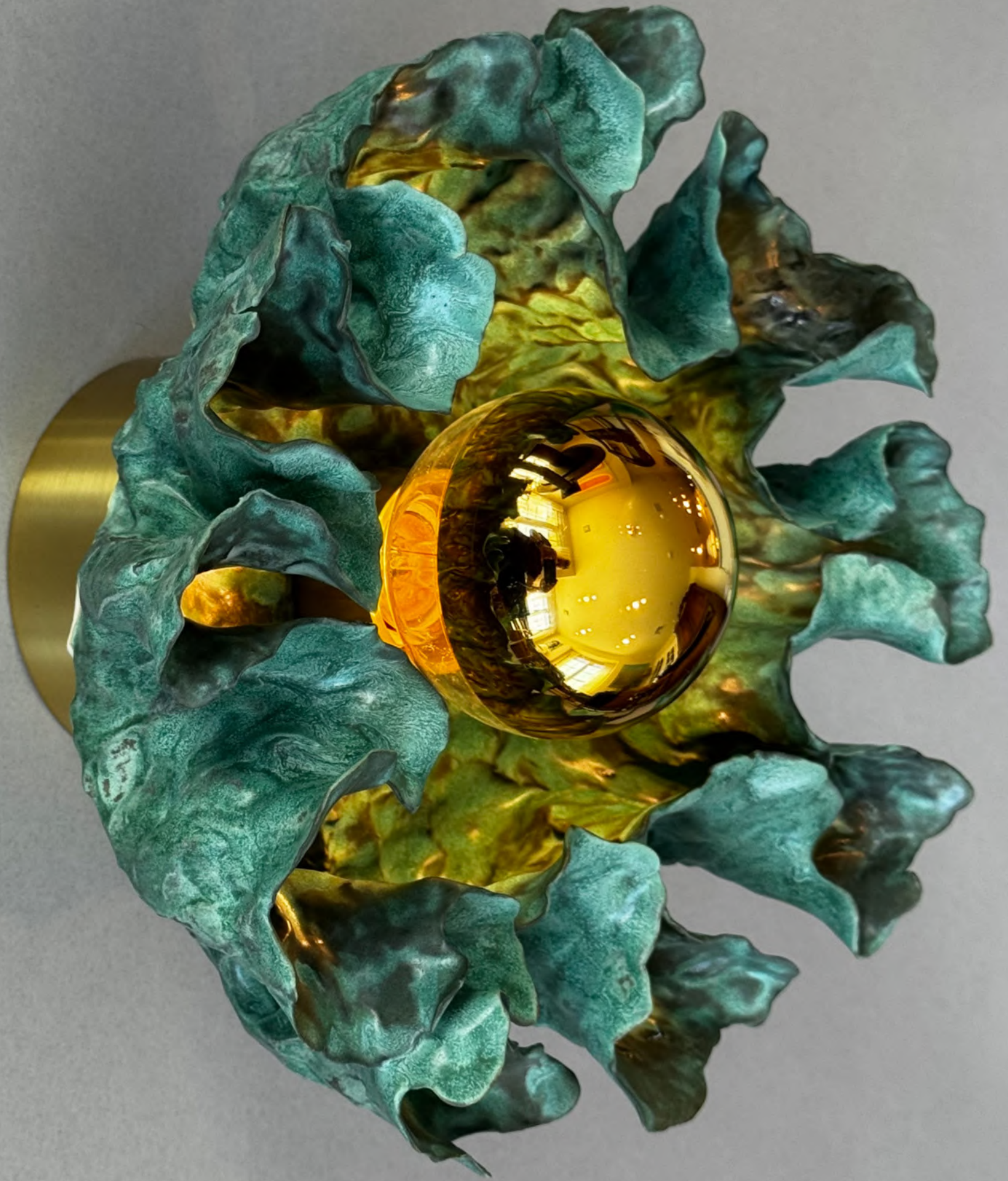
Metal base is available in matte brass or polished nickel

Lamping; 7 Watt LED, 60 watt equivalent, standard medium base, with gold or silver top, included.

15" diameter x 7.5" high, exact dimensions may vary given the hand worked process.

Mounting 4.5" diameter

Item FM11A





## Acanthus Wall Mount

Hand built, high fire porcelain, when unglazed the undulating surface allows for the light to glow through the translucent porcelain, creating an ethereal effect.

Available in finishes shown; unglazed translucent, gold and green verdigris glaze or custom finishes on request

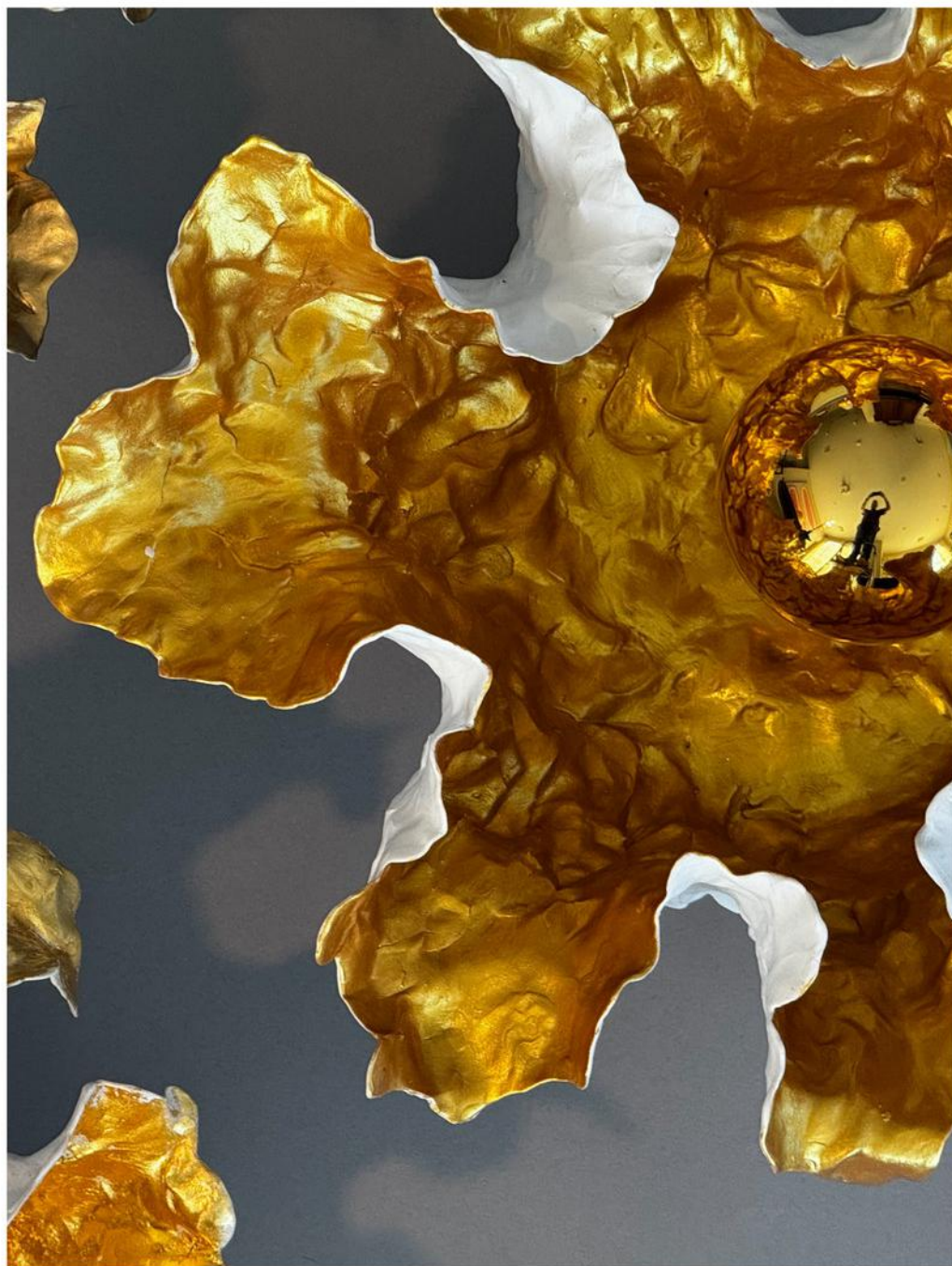
Metal base is available in matte brass or polished nickel

Lamping; 7 Watt LED, 60 watt equivalent, standard medium base, with gold or silver top, included.

13.5" diameter x 7" high, exact dimensions may vary given the hand worked process.

Mounting 4.5" diameter





## Ranunculus Wall Mount

Hand built, high fire porcelain, when unglazed the undulating surface allows for the light to glow through the translucent porcelain, creating an ethereal effect.

Available in finishes shown; unglazed translucent, gold and green verdigris glaze or custom finishes on request

Metal base is available in matte brass or polished nickel

Lamping; 7 Watt LED, 60 watt equivalent, standard medium base, with gold or silver top, included.

13.5" diameter x 7" high, exact dimensions may vary given the hand worked process.

Mounting 4.5" diameter

Item # WS09





## Lisianthus Ceiling Mount

Hand built, high fire porcelain, when unglazed the undulating surface allows for the light to glow through the translucent porcelain, creating an ethereal effect.

Available in finishes shown; unglazed translucent, gold and green verdigris glaze or custom finishes on request

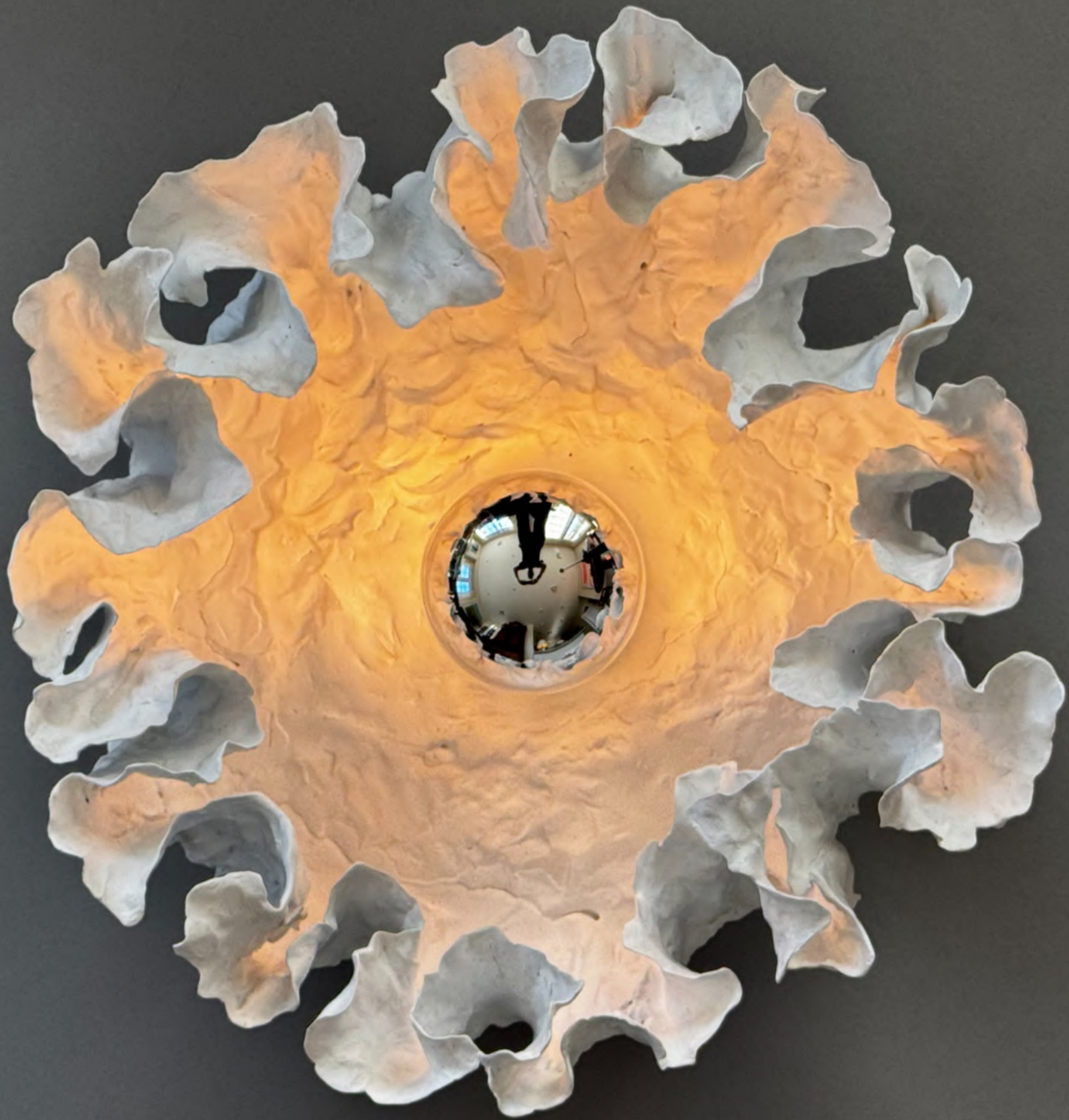
Metal base is available in matte brass or polished nickel

Lamping; 7 Watt LED, 60 watt equivalent, standard medium base, with gold or silver top, included.

13.5" diameter x 7.7" high, exact dimensions may vary given the hand worked process.

Mounting 4.5" diameter

Item #FM07





## Helianthus Ceiling Mount

Hand built, high fire porcelain, when unglazed the undulating surface allows for the light to glow through the translucent porcelain, creating an ethereal effect.

Available in finishes shown; unglazed translucent, gold and green verdigris glaze or custom finishes on request

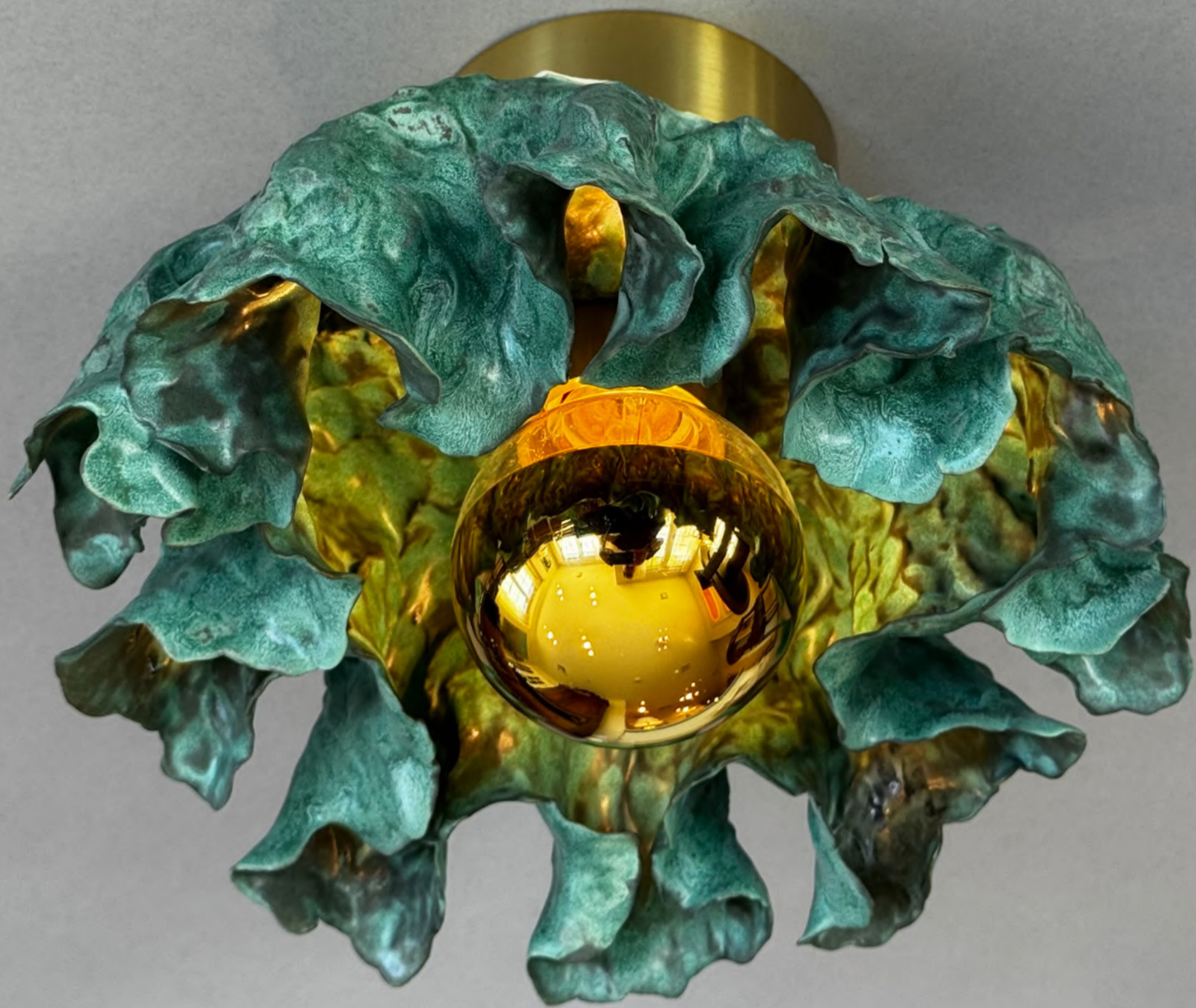
Metal base is available in matte brass or polished nickel

Lamping; 7 Watt LED, 60 watt equivalent, standard medium base, with gold or silver top, included.

15" diameter x 7.5" high, exact dimensions may vary given the hand worked process.

Mounting 4.5" diameter

Item FM12





## Acanthus Ceiling Mount

Hand built, high fire porcelain, when unglazed the undulating surface allows for the light to glow through the translucent porcelain, creating an ethereal effect.

Available in finishes shown; unglazed translucent, gold and green verdigris glaze or custom finishes on request

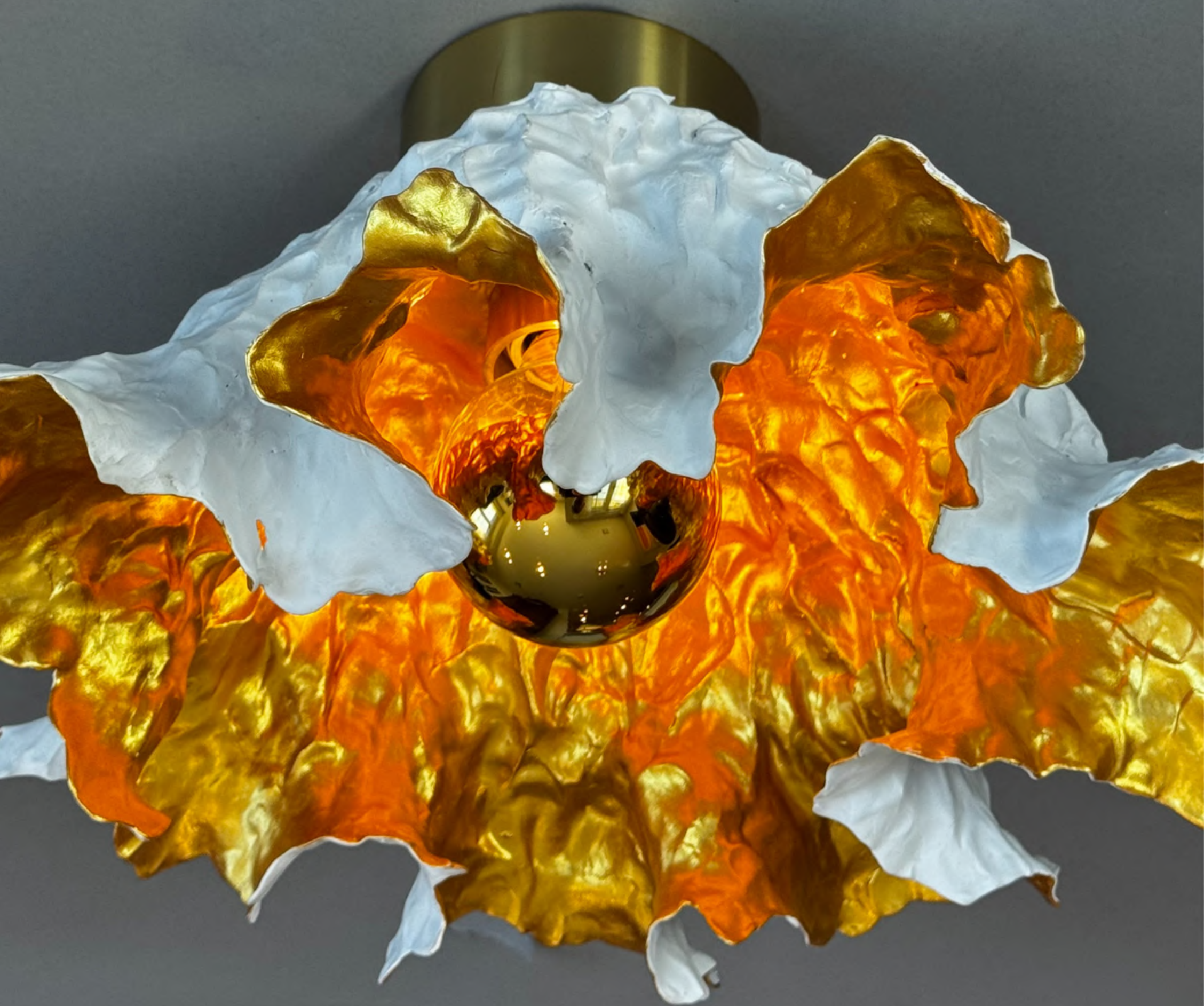
Metal base is available in matte brass or polished nickel

Lamping; 7 Watt LED, 60 watt equivalent, standard medium base, with gold or silver top, included.

13.5" diameter x 7" high, exact dimensions may vary given the hand worked process.

Mounting 4.5" diameter

Item FM06





## Ranunculus Ceiling Mount

Hand built, high fire porcelain, when unglazed the undulating surface allows for the light to glow through the translucent porcelain, creating an ethereal effect.

Available in finishes shown; unglazed translucent, gold and green verdigris glaze or custom finishes on request

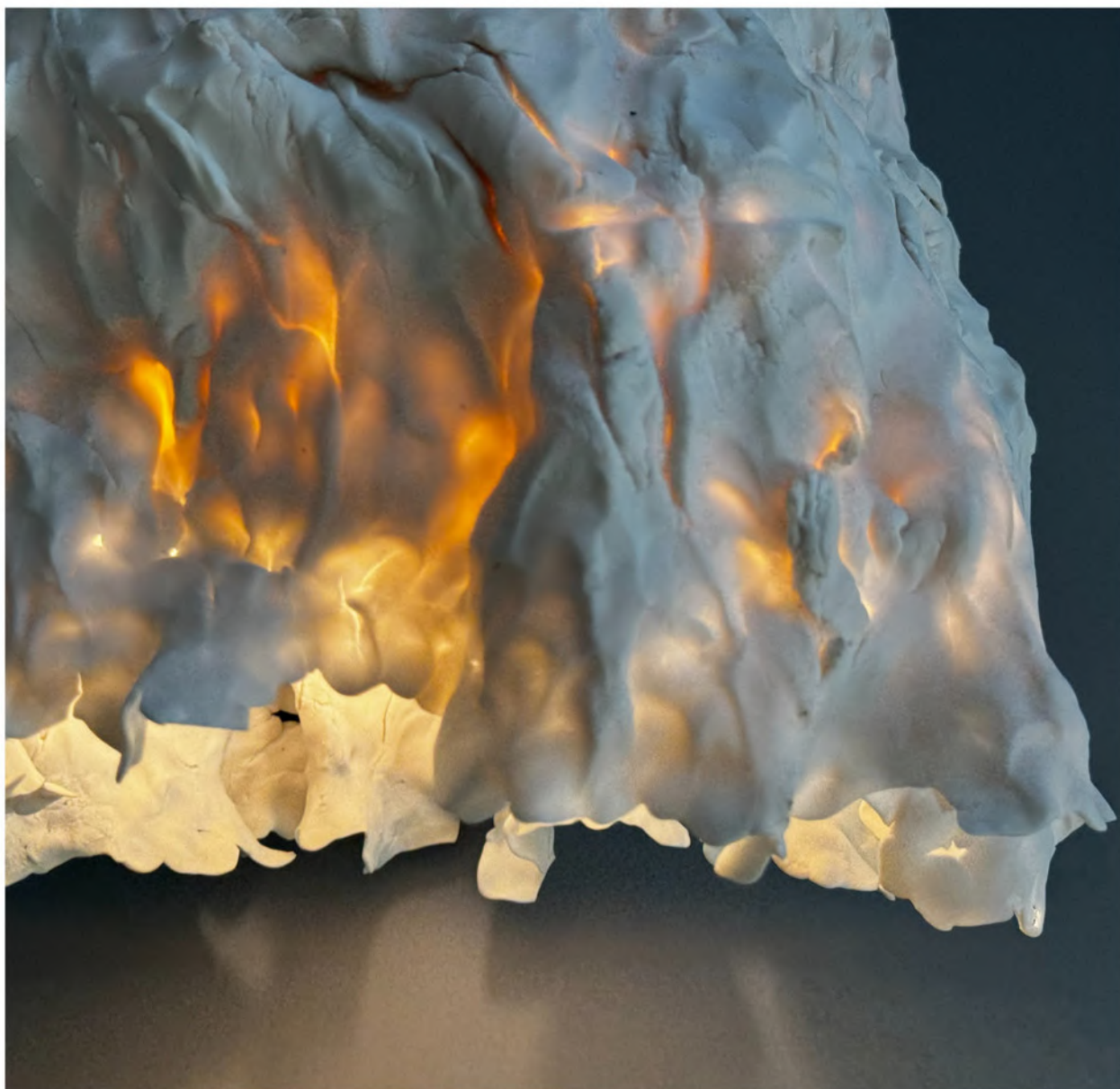
Metal base is available in matte brass or polished nickel

Lamping; 7 Watt LED, 60 watt equivalent, standard medium base, with gold or silver top, included.

15" diameter x 7.5" high, exact dimensions may vary given the hand worked process.

Mounting 4.5" diameter





## Sabelica Pendant

Available in finishes shown; unglazed translucent, gold and green verdigris glaze or custom finishes on request

Metal mounting is available in matte black and matte nickel

Lamping; 8 Watt LED, 60 watt equivalent, standard medium base, included.

Shade 10.5 diameter x 11" high, exact dimensions may vary given the hand worked process.

Overall height 18" - 48" includes (2) 6" and (2) 12" tubular down rods, canopy 4.72" diameter

Item PE08





## Lisianthus Table Lamp

Hand built, high fire porcelain, when unglazed the undulating surface allows for the light to glow through the translucent porcelain, creating an ethereal effect.

Available in finishes shown; unglazed translucent, gold and green verdigris glaze or custom finishes on request

Metal base is available in matte brass or polished nickel

Lamping; 7 Watt LED, 60 watt equivalent, standard medium base, with gold or silver top, included.

13.5" diameter x 7" high, exact dimensions may vary given the hand worked process.

Mounting 4.5" diameter

Item TL01





## Helianthus Table Lamp

Hand built, high fire porcelain, when unglazed the undulating surface allows for the light to glow through the translucent porcelain, creating an ethereal effect.

Available in finishes shown; unglazed translucent, gold and green verdigris glaze or custom finishes on request

Metal base is available in matte brass or polished nickel

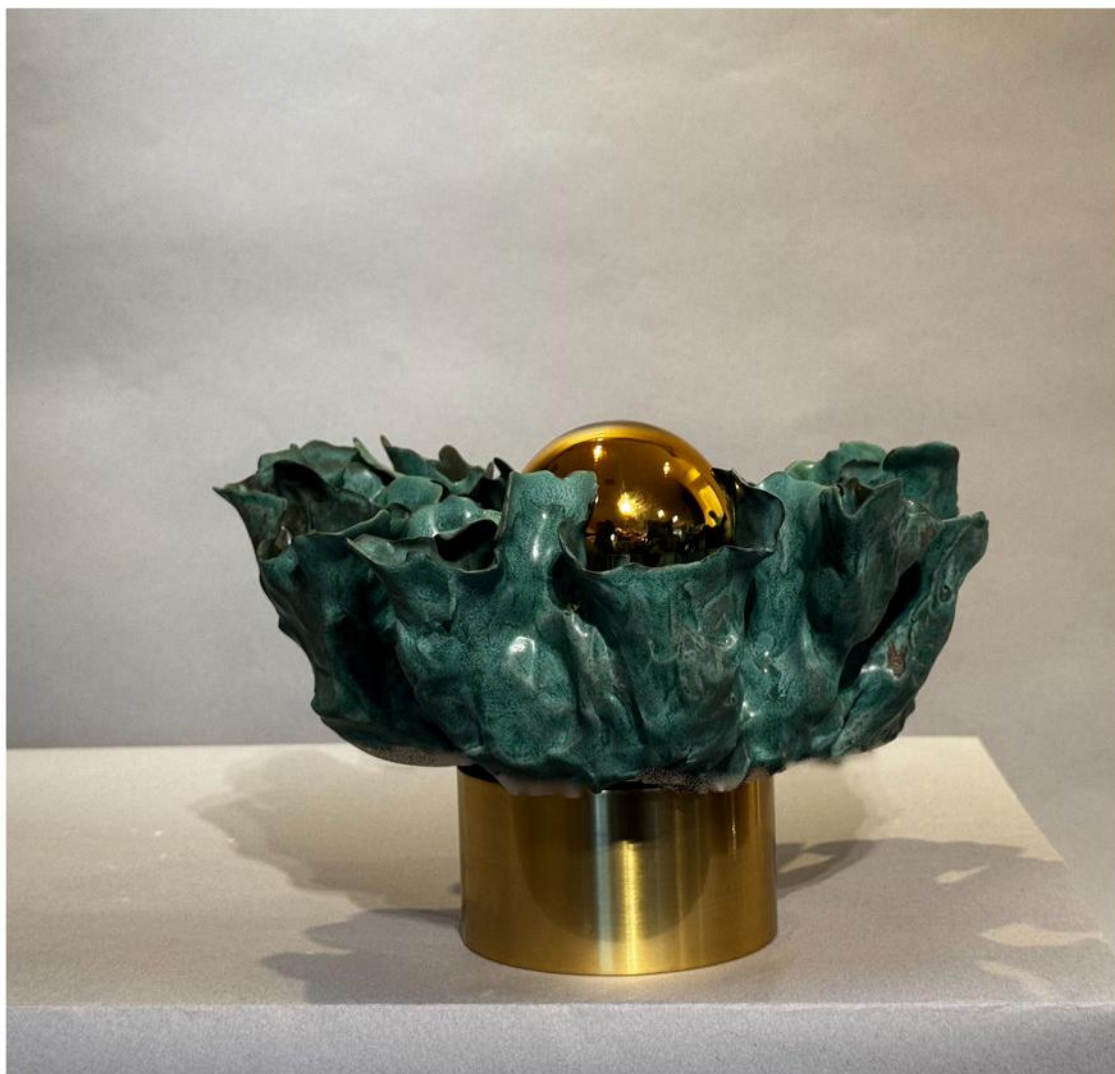
Lamping; 7 Watt LED, 60 watt equivalent, standard medium base, with gold or silver top, included.

15" diameter x 7.5" high, exact dimensions may vary given the hand worked process.

Mounting 4.5" diameter

Item TL02





## Acanthus Table Lamp

Hand built, high fire porcelain, when unglazed the undulating surface allows for the light to glow through the translucent porcelain, creating an ethereal effect.

Available in finishes shown; unglazed translucent, gold and green verdigris glaze or custom finishes on request

Metal base is available in matte brass or polished nickel

Lamping 7 Watt LED, 60 watt equivalent, standard medium base, with gold or silver top, included.

10" diameter x 7" high, exact dimensions may vary given the hand worked process.

Mounting 4.5" diameter

Item TL04





## Ranunculus Table Lamp

Hand built, high fire porcelain, when unglazed the undulating surface allows for the light to glow through the translucent porcelain, creating an ethereal effect.

Available in finishes shown; unglazed translucent, gold and green verdigris glaze or custom finishes on request

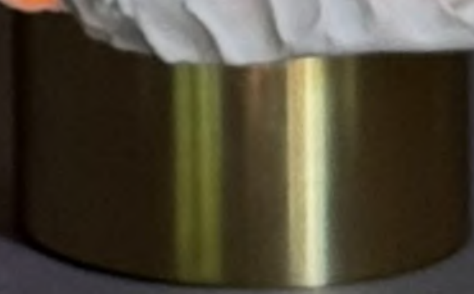
Metal base is available in matte brass or polished nickel

Lamping; 7 Watt LED, 60 watt equivalent, standard medium base, with gold or silver top, included.

15" diameter x 7.5" high, exact dimensions may vary given the hand worked process.

Mounting 4.5" diameter

Item TL03





## Sabelica Table Lamp

Hand built, high fire porcelain, when unglazed the undulating surface allows for the light to glow through the translucent porcelain, creating an ethereal effect.

Available in finishes shown; unglazed translucent, gold and green verdigris glaze or custom finishes on request

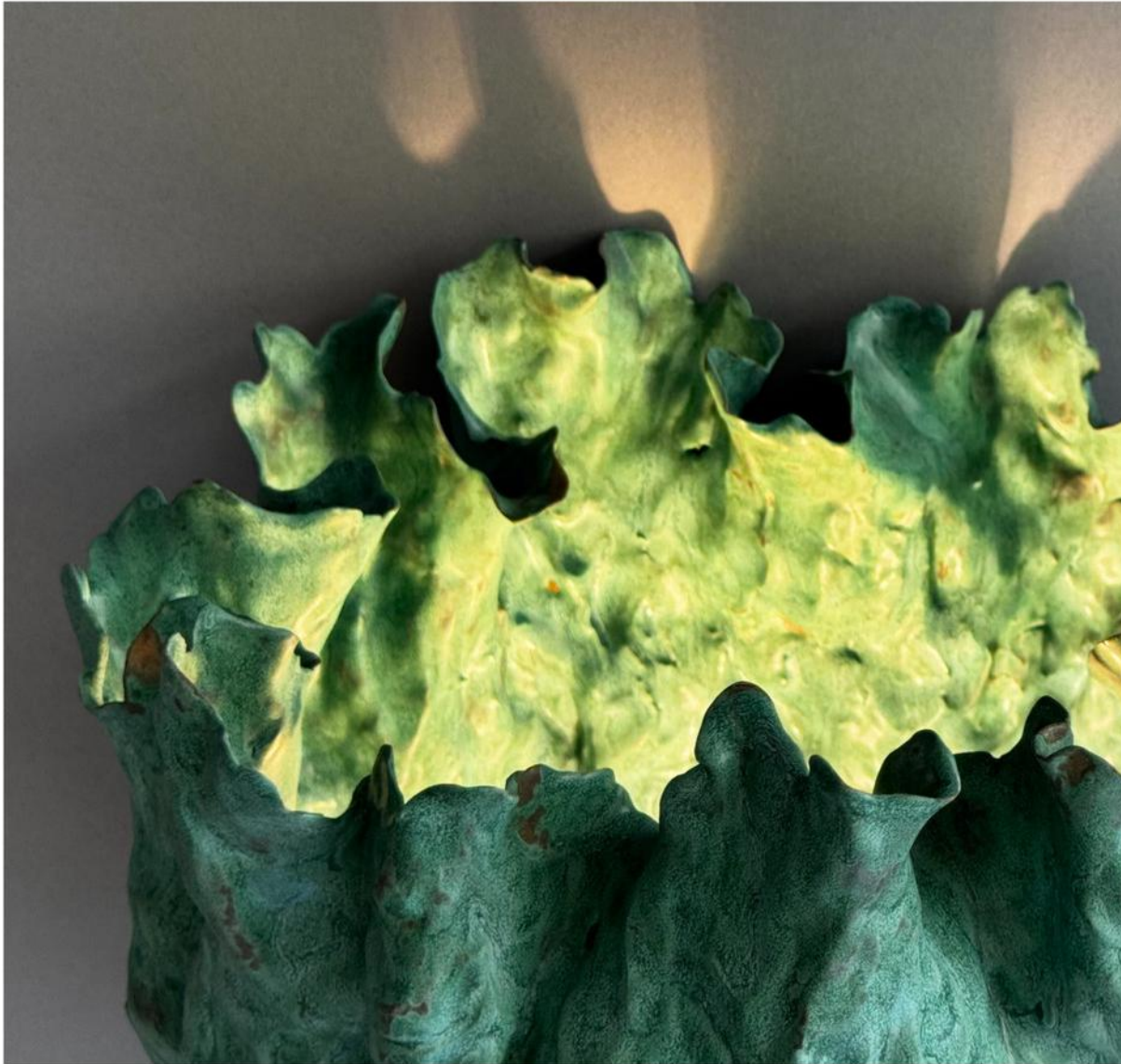
Metal base is available in matte brass or polished nickel

Lamping; 8 Watt LED, 60 watt equivalent, standard medium base, included.

10.5 diameter x 13" high, exact dimensions may vary given the hand worked process.

Item TL05





## Sabelica Table Lamp

Hand built, high fire porcelain, when unglazed the undulating surface allows for the light to glow through the translucent porcelain, creating an ethereal effect.

Available in finishes shown; unglazed translucent, gold and green verdigris glaze or custom finishes on request

Metal base is available in matte brass or polished nickel

Lamping; 8 Watt LED, 60 watt equivalent, standard medium base, included.

10.5 diameter x 13" high, exact dimensions may vary given the hand worked process.

Item TL05

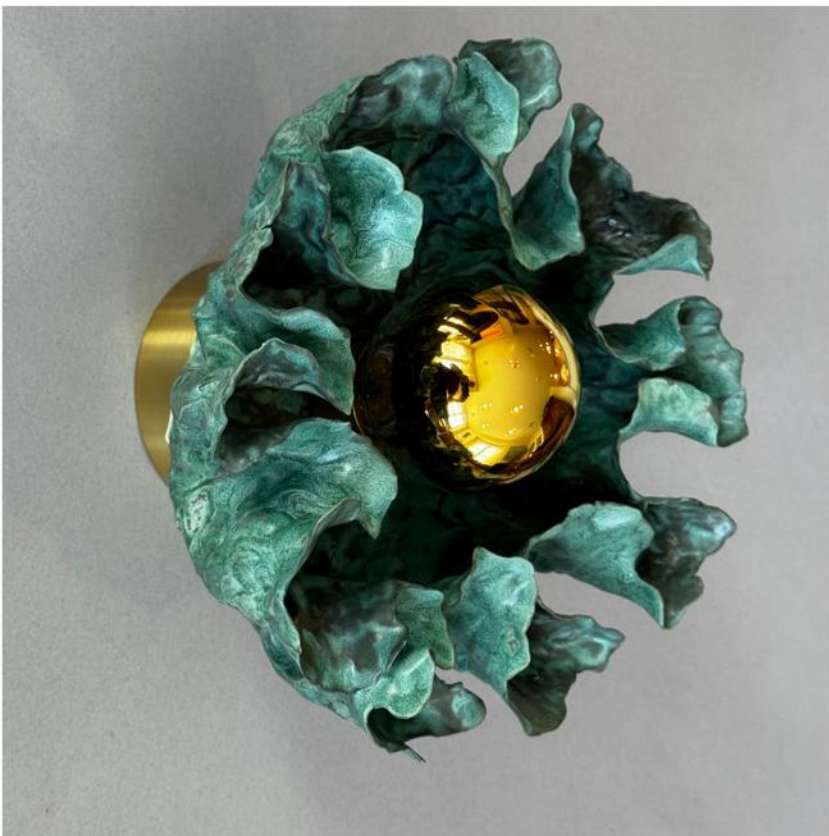
# Wall Mount Fixtures Overview



Lisianthus



Helianthus



Acanthus



Ranunculus

# Ceiling Mount Fixtures Overview



Lisianthus



Helianthus



Acanthus



Ranunculus

## Pendants Overview



Sabelica Bisque



Sabelica Veridgris



# Table Lamps Overview



Lisianthus



Helianthus



Acanthus



Ranunculus



Sabelica Bisque



Sabelica Veridgris

# Glaze Finish Options



## A note about finishes

For the translucent effect, the piece is unglazed or bisque fired leaving a creamy white matte finish. A clear gloss glaze can also be applied, this will not affect the translucent quality.

Alternatively opaque colored glazes can be applied. In addition to the finishes shown in the catalog; a sampling of available glazes is shown on the preceding page.

Herbarium Collection

Hand Built Porcelain Lighting by Charles Burleigh

[charles@charlesburleigh.com](mailto:charles@charlesburleigh.com), 917.355.3022

[www.charlesburleighporcelain.com](http://www.charlesburleighporcelain.com), @burleighporcelain

