

Winchelsea Star

Price \$1

Your Weekly Community Newspaper

Since 1977

Vol 48 Ed 29

Tuesday 29 July 2025

winchelseastar.org.au



Bacus Beagh



CPR Kids Ambulance



Men's Shed Ray, Frank, Bill



CWA, Kim

Winchelsea Community Market



Cakes & Preserves



Fromage



La Caseta



MK Fresh Seafoods

NEXT SUNDAY

9-1pm

Shire Hall Car Park
Main St, Winchelsea



Bees, Matt

1



3

Winchelsea Community Bus



5

SURF COAST

ARTS Trail

18

What's On in Winchelsea July/August

Centrespread

CONTENTS

29 July 2025

FEATURES

Your community market	Elaine Atkinson	2
Help shape our Youth Action Plan	Surf Coast Shire	2
Domestic Animal Management Plan	Surf Coast Shire	6
Shaping the future of our town	Elaine Atkinson	7
Future events for Winchelsea	Elaine Atkinson	7
Homelessness emergency	Council Homeless	9
Fire season preparation	Surf Coast Shire	10
Roadside weeds and pests	Vic Government	10
AI is not intelligent at all	Charles Darwin Uni	14
Winchelsea Health & Wellness Expo	Elaine Atkinson	15
Hesse Rural Health Board of Directors	Hesse Rural Health	15
Dementia	UNSW Sydney	24

PHILOSOPHY & THE ARTS

Cromwell's Quirks	C Forgansen	5
Surf Coast Arts Trail	Veronica McDonald	5

HISTORY & CULTURE

Barwon Park	Michael Donovan	9
-------------	-----------------	---

THE ENVIRONMENT

Climate Report	Judy Cameron	12
Recycling in Surf Coast Shire	Surf Coast Shire	12
Update on Deep Sea Mining	Surfrider Found Aus	13

CHILDREN

Winchelsea Primary School	WPS	17
---------------------------	-----	----

CHURCHES

Church Services & Thought of Week	John Bader	14
-----------------------------------	------------	----

COMMUNITY INFORMATION

Community Noticeboard	11
What's On July/August 2025	18
Services & Activities in Winchelsea	21
Winchelsea Facebook Pages	23

FARMING

Victorian Drought Freight Network	Ag Vic	25
Victorian Drought Support program	VFF	25

LETTERS TO THE EDITOR

Winchelsea Community Bus	Ray Atkinson	3
Hesse Street Greening and Stormwater Treatment Project	Richard Butcher	27

SPORTS & EXERCISE

Winchelsea Tennis Club	Fletcher Allen	25
Blues News	Janet Fletcher	27
Parkrun 73 Winchelsea	Neil McInnes	31
Junior Netball	Shae Callahan	35

Your community market: a launchpad for local business and connection

Elaine Atkinson

Community markets play a vital role in supporting business start-ups by offering an affordable and low-risk entry into the world of business. For many, they are the first step in testing ideas, learning how a business operates, and gaining valuable customer feedback — all without the significant overheads of traditional retail.

Beyond business, markets create powerful connections. They offer a rare chance to meet producers face-to-face, hear their stories, and better understand the passion and effort behind every product. It's a setting where community spirit thrives, encouraging interaction, support, and shared success.

Our market is proudly driven by the community. Not only does it serve as an economic stimulator, but it also supports local organisations in raising much-needed funds. Every stall and every visit helps keep that cycle strong.

We invite you to join us at our next market on Sunday, 3 August 2025. Be part of something local, welcoming, and inspiring. Whether you're looking for handcrafted goods, fresh produce, or simply a great conversation — you'll be surprised by the diversity of products and people you'll find.

Support local. Connect with community. Discover something new.

Help shape our Youth Action Plan

Surf Coast Shire

Calling all young people aged 10-25: Surf Coast Shire Council wants to hear from you! Whether you're at school, uni, working, or just hanging out in the shire, your voice matters.

Council is developing a new Youth Action Plan and wants to know young people's views, ideas and issues to guide this work.

There are three different surveys targeted at those aged:

- 10-13 years
- 14-17 years
- 18-25 years.

Young people can complete the survey at surfcoast.vic.gov.au/YouthSurvey.

"Being a teen today is unlike any other time in history and it's important we understand young people's interests and the issues affecting them," Cr Rebecca Bourke said.

"Our youth team will be visiting schools and encouraging young people to fill out the survey. We'd love it if parents could do the same, as these answers matter and will be used to guide our Youth Action Plan for the next four years."

"The plan will help us support young people as they grow and address the issues affecting them where we can."

"It only takes about five or so minutes to complete the survey and the more voices we hear from the better," she said.

The Youth Action Plan will set priorities for Council's work with young people from 2025-2029, covering things like health and wellbeing, connection, learning, safety, inclusion and more.



Winchelsea Community Bus

Ray Atkinson

Letter to the Editor

To: Winchelsea Star Editor <editor@winchelseastar.org.au>

I am concerned by the decreasing interest in the bus that goes to The Hub every Thursday during Footy season - over the past 12 months I have seen a gradual decline in numbers using the bus because of continually increasing the cost from a free service to then paying \$5 per trip - to now paying \$10 per trip. This week only 4 people took up the offer. There are many members in our community who live in isolation who would use the service.

Regards, Ray Atkinson, Concerned Citizen

Community Bus Faces Uncertain Future

Ray Atkinson, a previous long-serving volunteer bus driver for ADIDAS Hesse Rural Health, has voiced his disappointment at the gradual decline in passengers using the weekly community bus to The Hub. Once a vital, free service for people living in social isolation, the bus was created to bring connection, friendship, and a sense of belonging to those with limited transport options.

Over time, however, the service—originally funded by generous local community groups—has introduced a fee to cover rising costs. The fare now sits at \$10 per week, a barrier that has unfortunately led many regular riders to stop attending. For many, particularly seniors and individuals on low incomes, this small fee

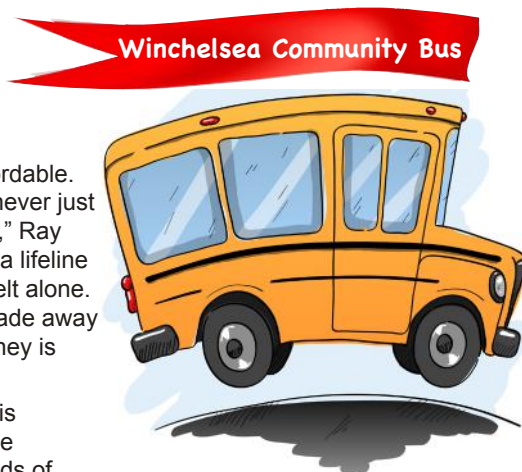
is simply unaffordable. "This bus was never just about transport," Ray shared. "It was a lifeline for those who felt alone. Watching that fade away because of money is heartbreaking."

The future of this essential service rests in the hands of the community and those who make these decisions. There is talk of it being closed down altogether. With renewed local support—whether through lobbying, donations, sponsorships, and spreading the word—there is hope that this bus can once again serve those who need it most.

Let's come together to keep this connection alive. If you or your organisation can help fund, promote, or support the continuation of this service, your involvement could make a real difference in someone's life.

Together, we can bring back the heart of our community—one ride at a time.

Ray Atkinson, Concerned citizen



WINCHELSEA COMMUNITY MARKET

NEXT SUNDAY
9-1pm

1st Sunday monthly (except Nov)
Shire Hall Car Park, Main St

[growingwinchelsea.com/project/
winchelsea-community-market/](http://growingwinchelsea.com/project/winchelsea-community-market/)

FUTURE EVENTS 4 WINCHELSEA!

MONDAY AUGUST 11TH
7PM

@ EASTERN RESERVE HUB

Be **INSPIRED** by the story of
how a small volunteer run
community event in Lucindale
that started 48 years ago is
still going strong with 22,000
visitors each year!



Kids enjoying a day out at the community event in Lucindale.

YOUR VOICE MATTERS!

Come along and share your ideas for
a **Major Annual Event** to put our town on
the map in 2026!



Community Bank
Winchelsea and District
Bendigo Bank



SCAN
TO
RSVP
OR
LEARN
MORE.



✂ CUT HERE & STICK ME ON YOUR FRIDGE! ✂



SURF COAST

ARTS Trail 2025

Saturday 2 & Sunday 3 August
10am-4pm



Begin planning your weekend!

Contact us via email artsteam@surfcoast.vic.gov.au or phone **03 5261 0600**
Follow us on Facebook & Instagram [@surfcoastartmatters](https://www.instagram.com/surfcoastartmatters)

Photo: Lauren McQuade Handmade Credit: Bobby Dazzler Photography



Wadawurrung,
Gulidjan, Gadubanud Country

surfcoastartstrail.com.au #SurfCoastArtsTrail



Winchelsea Taxis is now Surfcoast Taxis

Our fleet of vehicles are growing to all late models and we are covering an extended area including Winchelsea, Colac, Bannockburn, Inverleigh, Great Ocean Road and Geelong.
We have a fleet of 10 seater Maxi Vans, all with capacity to carry wheelchairs.

Surfcoast Taxis Pty Ltd
All Bookings: 0408 325 992
Fax: 5267 2699
Email: bannotaxis@gmail.com
 (Admin or Stan 0429 672 888)
 66A Batson Street
 Winchelsea 3241





Book your next ride with **smartHAIL**

Download on the App Store | GET IT ON Google Play

Accounts NDIS provider. TAC, DVA etc

NDIS provider number 4050001044
NDIS provider number 4050001048



SUNNY GYM
GYM BUT JOYFUL

Strength training and martial arts for the whole family in Winchelsea

PERSONAL TRAINING

STRENGTH CLASSES

KIDS KUNG FU

BOXING

0401417387
sunnysunngym.com.au
evan@sunnysunngym.com.au

*group classes only, excludes personal training.



Intro Deal: \$35 for 2 weeks*



Moriac Veterinary Clinic

0447 781 089

PHONE 24 HOURS

784 Hendy Main Road Moriac
info@moriacvet.com
www.moriacvetclinic.com.au

HOURS // Monday - Friday: 8am - 5pm

- Domestic and Commercial hire equipment
- Digging and Earthmoving equipment
- Firewood
- LPG for domestic and commercial requirements

- Industrial welding gas
- New trailers and trailer repairs
- Stockists of Royal Oil Lubricants products

Give Chris and the Team a call on **5232 1177** or email info@colachire.com.au

www.colachire.com.au

101 Wallace St Colac 3250





STORAGE KING

SIMPLE STORAGE SOLUTIONS

- Personal & Business Storage
- Boat, Caravan & Vehicle Storage
- High Security Premises
- Individually Alarmed Units
- Electric Gate Access
- 7 Day Access & CCTV

YOUR STORAGE PROBLEMS SOLVED

5267 3116

6 ALSOP DRIVE, WINCHELSEA 3241



This weekend ➡
 Saturday & Sunday
 2 & 3 August 10am-4 pm

SURF COAST ARTS Trail

Three local artists from the Winchelsea Riverlee Arts Group are participating in the 2025 Arts Trail.

We invite you to support our hinterland artists and maybe acquire a painting to start or add to your collection of original work

Veronica McDonald



Blue Wren, Dee Matheson

Dee Matheson is the inspiring teacher for the Riverlee art group in Winchelsea.

Her Wyuna Studio No 53 in Gherang is a delightful place to visit in winter.

Flowering grevillea and a variety of native plants in her new but well established garden will reveal the inspiration for her work.

You will be captivated by her bird paintings and the birdsong which surrounds her studio.



Snow Gum, Veronica McDonald

Veronica McDonald has exhibited in the Art Trail in her VronxArt Studio Number 56, in Batson St. since the beginning. Moving from oils to pastels, acrylics and watercolour she is forever searching for the perfect subject.

As Veronica is challenged by our native redgums those huge ancient trees with their spreading branches, straggling and untidy, she hopes to capture their own individual identity and beauty.

Seascapes in pastels and watercolour also take pride of place on her studio walls.



Laurel McLennan

Laurel McLennan at Shrek Gallery No 54 in Gherang is extremely content with watercolour painting.

Her lifetime of country living has given her a perception of the beauty in nature. Her cozy studio set in the rolling paddocks of the Hinterland at Gherang, is an inspiring place to visit.

The Surf Coast Arts Trail is a vibrant annual celebration of the creativity that defines our region. Over 200 artists are opening their studios, sheds, galleries and homes—offering you the chance to meet the makers, see work in progress, and explore the creative energy of the Surf Coast and Hinterland.

Art has held a special place in human culture for centuries, transcending time, borders and languages. Every piece of art has an artist behind it, a creator with a unique vision and voice. It has the power to stir your emotions which can serve as a constant source of inspiration and introspection.

Art brings beauty into our lives. When you purchase your first piece of art you are starting on a journey of discovery and appreciation. The walls of your home become a gallery of your own, where each piece contributes to the overall ambience, enhancing your daily life with visual pleasure.



Cromwell's Quirks

Cromwell Forganssen

This issue's "Cromwell's Quirks" Belladonna and Bluntness (On the Pharmacology of Personality) was unfortunately thought to be contentious in discussing the effects of poisonous plants (and cheekily equating them to human personality types!), but for those prepared to swear they will not apply anything therein to any ill purpose whatsoever, then he is happy to forward them a copy, he is contactable by SMS on 0448 365 191.



Take the lead and contribute to Domestic Animal Management Plan

Surf Coast Shire

Surf Coast Shire Council invites people to take the lead and contribute to the next Domestic Animal Management Plan.

The plan will outline how Council and the community can play their role in making the Surf Coast a place where people and pets can enjoy shared spaces and live together safely.

With more than 4,500 registered dogs and 570 registered cats across the shire, Surf Coast residents love their pets.



Cr Schonfelder and Whistler

Whether you're a pet owner or not, whether you're a local or someone from outside the shire who loves bringing their dog here – all input will be valuable.

People are invited to complete a survey at surfcoast.vic.gov.au/DAMP25 before 14 August.

Feedback will help shape a draft plan, to be considered by Council.

Through the development of the Domestic Animal Management Plan, Council is calling on both locals and visitors to take the lead and be responsible pet owners.

From registering your pet and picking up dog poo when you're out and about, to keeping a close watch on your furry friend and sticking to our 24-7 cat curfew – it all helps.

For more information on the Domestic Animal Management Plan and to have your say, visit surfcoast.vic.gov.au/DAMP25.

People seeking a printed copy of the survey can call Council on 5261 0600 to arrange one to be posted.

The tom cats heard a tweet.

Contribute to Council's next Domestic Animal Management Plan.

Share your feedback about cats and dogs across the shire and how we can all play our role so the Surf Coast is a place where people and pets can live together safely.

As we develop the plan, we're calling on locals and visitors to take the lead and be responsible pet owners by:

- Registering their pet.
- Picking up dog poo when out and about.
- Keeping a close watch on their furry friend.
- Sticking to our 24-7 cat curfew to protect native wildlife.

SCAN ME

HAVE YOUR SAY
surfcoast.vic.gov.au/Damp2025



Shaping the future of our town

Winchelsea residents gathered on 14 July to talk about the town's future

Elaine Atkinson

Despite a brisk winter's chill, 31 dedicated residents gathered at the Winchelsea Senior Citizens Centre on Monday evening, 14 July 2025, for a community forum focused on shaping the future of their town.

"The event formed part of the Winchelsea Place Plan process, with Kate Sullivan, Manager of Integrated Planning at Surf Coast Shire, guiding attendees through the planning framework and engaging the community in an open discussion about the town's growth and development," said John Tebbutt, President of Growing Winchelsea.

Key topics included an update on the Windfall Gains Tax, providing clarity on how it may impact local landowners and development. A lively conversation followed around the Riverside Amphitheatre concept – a potential new public space aimed at enhancing local events and cultural life. Attendees contributed a range of innovative ideas and valuable local insights.

The forum also provided an update on the Growing Winchelsea initiatives, highlighting recent achievements and outlining next steps in continuing the town's sustainable growth and liveability.

Community engagement remains central to the Place Plan process, and Monday night's turnout and enthusiasm



Adrian Schonfelder, David Goodfellow, Kevin McDonald, Charlie Earl (back), Victoria Hastings, John Tebbutt, Tony Phelps, June Rowe

underscored Winchelsea's strong community spirit and shared vision for the future," continued John.

Further opportunities for involvement will be promoted in the coming months as planning continues.

For more information, visit the Surf Coast Shire website www.surfcoast.vic.gov.au

Future events for Winchelsea

If you want your ideas heard, come along to the Winchelsea Forum run by Growing Winchelsea - Monday, 11 August 2025 Eastern Reserve, Winchelsea

Elaine Atkinson

The Winchelsea Forum is inviting community members to help shape the future of local events by sharing their thoughts on what types of events they'd like to see, when they should be held, and any other ideas or feedback.

A short survey is now open for community input. The results will directly inform a collaborative **brainstorming workshop** taking place at the Forum on **Monday, 11 August 2025 at Eastern Reserve, Winchelsea**.

Whether you're passionate about music, markets, sport, arts, agriculture, culture, family activities, or something entirely different – **your voice matters**. This is your chance to influence the future of events in our town.

Complete the survey and help shape the calendar of events that reflect our community's spirit, celebrates its unique character and promotes our natural assets.

Tell us what you think – and be part of creating something great for Winchelsea!

Survey Link: Winchelsea Events - Have your Say!

Forum: Future Events 4 Winchelsea

When: Monday, 11 August 2025 at 7.00 pm

Where: The Hub Eastern Reserve, Winchelsea

Who should attend: Community organisations, Service providers, Surf Coast Shire staff, volunteers, interested community members

More information: Elaine Atkinson, Mobile 0458009616
Email: secretary@growingwinchelsea.com

WINCHELSEA Osteopathic Clinic

Back pain • Neck pain • Sporting injuries • Headaches • Shoulder pain • Sciatica


Ph: 5267 2948

34 Main Street, Winchelsea (within *The Exchange*)

Book online at:

www.winchelseaosteopathicclinic.com.au







Family Healthcare - Naturally through Chiropractic

Get out of pain and back to life.
Build a foundation for lifelong wellness.
Perform at your absolute best.

Here for your Vitality...







www.onebodychiropractic.com.au
 03 52672240 Shop 4/21 Hesse St Winchelsea

MET BUILDING & CONSTRUCTION

NEW HOMES | EXTENSIONS | RENOVATIONS

Ph: 0409 433 687


 REGISTERED Building Practitioner



* Farm & Machinery Sheds * Residential Sheds
 * Garages & Carports * Patios
 Offering a diverse range of shed kits including C section, RHS, and U Beam, ensuring you have the options to create your ideal structure.
 We service Colac, Ballarat, Geelong and surrounding areas.
 Check us out on Facebook or visit our website
huttonbuild.com.au
 0488 031 332
sales@huttonbuild.com.au



Scott McDonald
 0423 413 829



S.J.R AUTOMOTIVE
 ADN 842 483 846 39
 13 ALSOP DRIVE, WINCHELSEA VIC 3241



SPECIALISING IN QUALITY





REGISTERED Building Practitioner

• NEW HOMES	• EXTENSIONS	• RENOVATIONS
• ALTERATIONS	• DECKS	• PERGOLAS
• CARPORTS	• VERANDAHS	• RE-GLADS
• BATHROOMS	• WINDOW REPLACEMENTS	

Leigh Lupton
 0438 840 104

LEIGHLUPTON17@GMAIL.COM

Est. 1977

HESSE RURAL HEALTH



Acute Care*
 Urgent Care*
 Residential Aged Care*
 Community Nursing
 Dietetics
 Physiotherapy
 Occupational Therapy

Diabetes Education
 Social Support Groups
 Counselling
 Home Care
 Health Promotion
 * services from Winchelsea only

www.hesseruralhealth.com.au
 P: (03) 5267 1200 E: reception@hesse.vic.gov.au



Mansions that made Winchelsea

Barwon Park

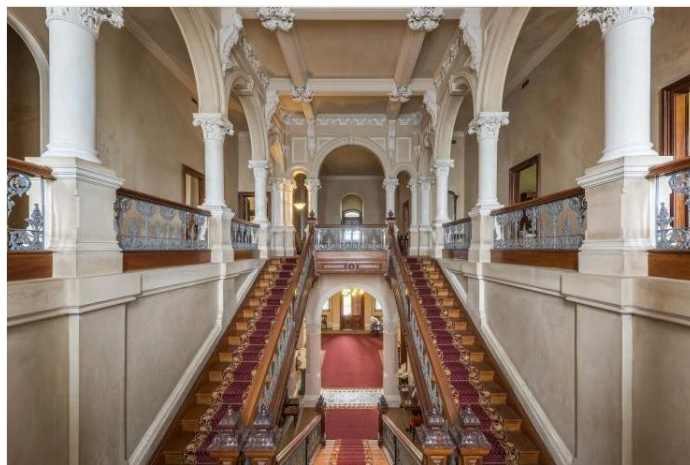
Mícheál P O'Dhonnabháin

This week's history focuses on one of the most well known colonial homesteads in Winchelsea; Barwon Park. The Barwon Park Estate is on the traditional lands of the Wadawurrung people, with Barwon River frontage. Colonial settlement of the Barwon Park Run started in 1837 by brothers Solomon and Josiah Austin, who were later joined by their brother Thomas, eventually creating a run of 29,000 acres (12,000 ha). The property was used for sheep and cattle grazing and horse training including "Banker", the 1863 Melbourne Cup winner. Following weeks we will focus on Austin's Sports career and other contributions to the local culture of Winchelsea.



Barwon Park *National Trust*

The Austins had felt embarrassed by the state of their first homestead on their vice-regal visit in 1867 and felt they needed a grander home for hosting guests. In 1869-71 they built the 42 room Italianate mansion, designed by Davidson & Henderson of Geelong at a cost of c.10,000 pounds. In 1871, work was completed on the bluestone mansion that Austin designed and built on his property. The mansion is now owned by the National Trust of Australia and is open to the public. Austin died six months after the mansion was completed, but his widow continued to live there. Mrs. Elizabeth Austin continues to be one



Barwon Park Interior *National Trust*

of the most significant historical figures in Winchelsea, and an entire article will be dedicated to her in coming weeks.

Barwon Park Mansion is Open to the public by guided tour only on the hour 11am-3pm on the second and last Sunday of the month during June, July & August and Wednesday & Sunday September to May. The extensive grounds also offer plenty of space to enjoy a picnic with family and friends. The mansion and stables are also an ideal venue for weddings, photography and group functions.



Mícheál P O'Dhonnabháin has lived in the Winchelsea area since 2010. Michael completed a Bachelor in History and Anthropology and a Master of Cultural Heritage at Deakin University, then went on to complete a PhD at Federation University, focusing on colonial and European collections of Indigenous Australian Cultural Heritage. Michael lectured at Federation and Monash Universities, lecturing in World History, Folklore Studies, Indigenous Studies and literary studies. Michael has worked in museums and cultural collections across Victoria, and can usually be seen in and about Winchelsea with his wolfhound.

New social homes welcome, but are a fraction of what's needed to end homelessness emergency

Council to Homeless Persons

Council to Homeless Persons has welcomed the announcement of one-thousand new social homes to be built in Victoria, and called for this to be the start of ongoing social housing building.

The Government's commitment to build 1,043 homes follows a joint commitment by the Victorian and Federal Governments earlier this month to fund construction of more than 1,200 social homes.

Council to Homeless Persons CEO Deborah Di Natale said, "We have 66,000 applicants languishing on Victoria's social housing waitlist. Women and children are sleeping in their cars at night, living in fear. That is completely unacceptable.

One third of Australians seeking homelessness assistance are in Victoria, yet the state has the lowest proportion of social housing.

Fast Facts:

- 102,000 people sought assistance from homelessness services in Victoria in 2023/24 (up 4 per cent from the previous year)
- 60,000 of them (58 per cent) were women
- 13,000 were working Victorians (up 23 per cent in five years)
- Family violence was the number 1 reason given for seeking assistance from homelessness services in Victoria in 2023/24
- One third of people seeking homelessness assistance in Australia are in Victoria, but we have the lowest proportion of social housing in the country (2.9 per cent). The national average is 3.9 per cent.
- Infrastructure Victoria's number one recommendation in its report "Victoria's draft 30-year infrastructure strategy" (released March 2025) is that the Victorian Government fund a program to build 4,000 new social homes per year for the next 15 years.

Fire season preparation underway for high-risk Surf Coast towns

Surf Coast Shire

To increase resident and visitor safety, Council is preparing for the bushfire season by working with local communities to manage vegetation in high-risk parts of the shire.

Council has been carrying out a winter fuel reduction program each year since 2009, targeting selected areas on a rotating basis. This year the focus is on Moggs Creek and parts of Fairhaven and Lorne, taking in an area of around 800 properties.

Councillor Libby Stapleton said parts of the Surf Coast Shire are among the most vulnerable to bushfire in the state. "It's important to work during these cooler months to get ready for the high risk times ahead," Cr Stapleton said.

"With such low rainfall during the first half of 2025, conditions are very dry and that means we're bracing for a potentially early, long and severe bushfire season. Managing vegetation now can reduce the risk to life and property, and give us the best chance of prevention and control of bushfires once the season starts."

Vouchers entitling residents to free drop-off of up to one cubic meter of green waste at the Anglesea, Lorne and Winchelsea transfer stations will be provided with their rates notices, with further green waste vouchers provided ahead of the fire season.

For more information about fire prevention visit surfcoast.vic.gov.au/fireready.

To contact a Community Fire Safety and Environment Officer call 5261 0600 or lodge a request at surfcoast.vic.gov.au/Contact.

Guidelines for removing vegetation include:

- Always consider safety first;
- Trim vegetation to create a clearance zone from buildings of two metres;
- Remove any woody weeds (find out more about woody weeds at surfcoast.vic.gov.au/weeds); and
- Thin out dense vegetation close to buildings or fences and create breaks in hedges.

Roadside weeds and pests

Victorian State Government

The Government is helping rural and regional councils be better prepared for the upcoming fire season, with additional funding announced for the Roadside Weeds and Pests program. 45 councils will receive up to \$85,000 each to help manage harmful weeds and pests along rural and regional roads.

Councils can use the funding for treating and preventing the spread of weeds including blackberry, boxthorn and serrated tussock. They can also use it to manage rabbit populations.

Local Government Victoria and Agriculture Victoria will work closely with each council to ensure plans to tackle weeds and pests are tailored to their local area.

Invasive plant and animal species threaten native biodiversity and can have a serious negative impact on agricultural production.

**This Week's
Winchelsea Star**
Editor - Judy Cameron
Designer - Susan Corby

Winchelsea Star

Your Weekly Community Newspaper

Since 1977



**Next Production
Coffee Meeting @ La Hoot
Saturday 30 August 9-10am
Everyone Welcome!**

production

Editors: Cerrie Forgan, Yvonne Stevens, Judy Cameron
Advertising: Sasha Gauntlett, Neil McInnes
Design: Susan Corby, Tony Phelps
Printed by: Winchelsea Community House
Website by: Winch Websites

committee

President: president@winchelseastar.org.au
Neil McInnes
Treasurer: treasurer@winchelseastar.org.au
Cathy Cheadle
Secretary: secretary@winchelseastar.org.au
Tony Phelps
Members: Mick O'Mara, Linda Carter, Susan Corby, Sasha Gauntlett, Judy Cameron, Yvonne Stevens, Cerrie Forgan

The Winchelsea Star
Send your stories and photos
news@winchelseastar.org.au

LOCAL NEWS and ARTICLES WELCOME
Include name and address of the sender
Email news@winchelseastar.org.au OR
Leave hard copy at IGA Supermarket

DEADLINE 5pm Fridays
4pm Sundays - hard copy articles left at IGA
6pm Sundays - sports results and weekend events

EDITOR 5273 0295
Leave a message

ADVERTISING
advertising@winchelseastar.org.au 5273 0294

FREE DIGITAL SUBSCRIPTION
www.winchelseastar.org.au

JOIN US ON FACEBOOK
facebook.com/TheWinchelseaStar



© Winchelsea Star Org. Inc. All rights reserved
Winchelsea Star Organisation Inc.
Reg. No. A0053999F ABN 75 941 529 279
winchelseastar.org.au PO Box 5 Winchelsea 3241
Views expressed are not necessarily those of the Winchelsea Star or Committee. The Winchelsea Star reserves the right to edit or not publish any article.



Meet Sid
**RESILIENT 7-YR-OLD
MINI DACHSHUND SEEKING
HIS SPECIAL HOME**

Sid is a loving black and tan male dachshund (9.8kg) in werribee, vic. Despite two ivdd surgeries this past year, his spirit remains unshaken. He now enjoys daily 2km walks and has made remarkable recovery progress.

We have known Sid for a number of years and can vouch for him being a loving pup - he just needs to find the right home without steps, and ideally no children, and plenty of love.

He does have some special considerations, see here <https://d2dr.Org.Au/sid-6yrs-10mths-black-and-tan-smooth-male-dob-11-03-18-9-8kg/>

Email Alice alicecloake@outlook.com

**BUS TO WAURN PONDS
SHOPPING CENTRE
SHOPPING AND A CUPPA**
for Winchelsea Seniors Card Holders

Wednesdays

30 July

13 August

27 August

Contact Jill on 0427 633 277 to book

Pick up from your home between 9am and 10am, leave Waurm Ponds at 1.30pm and **drop off at your home.** You will get a reminder call.

12-seater Community bus so spots are limited!

Cost: Gold Coin Donation

**Must have a Seniors Card to be eligible.*

CUBS AND JOEYS

For information, or to get involved, contact Marie McPadden 0409330147 or mcpadden630@bigpond.com

Winchelsea Star COMMUNITY NOTICEBOARD

email editor@winchelseastar.org.au or leave at Winchelsea IGA

**UNITING GROVEDALE
MONTHLY BOOK SALE**

Friday 1st August and Saturday 2nd August 2025, at the Uniting Barwon Grovedale site (272 Torquay Road, corner of Reserve and Torquay Roads) 10.00am – 2.00pm.

Come along and browse through the great range of stock on offer. All books are only \$1.00 And children's books \$0.50!

The uniting Book Sale raises much needed funds for local services & programs.

**WINCHELSEA TENNIS CLUB
JUNIOR COACHING**

Mondays from 3.30pm
with experienced Nicole Mullen, \$10

FOR SALE - PINE CONES

WINCHELSEA LIONS CLUB
has full bags of pine cones
\$5 per bag.
Raymond 0406 371 239.

RUNNING GROUP

Winchelsea has a small run group. Its more of a social run, jog and chat. We wait for slower runners and walk when one of us needs a rest.

The aim is 10k with the option of 8 or 5k it's up to you.

To finish, a coffee at La Hoot.

Sunday mornings 8am at La Hoot.

WINCHELSEA LIONS CLUB

Recycled compressed paper logs

Great for wood burners, fires and fire pits. Burn for over an hour, ash great for gardens, no chainsaw needed.

Pack of 4 logs \$5, small rolls \$2
Contact Alan 0476 47522

**WINCHELSEA
PICKLEBALL**

Pickleball is back at Winchelsea! The Tennis Club are running this every Wednesday at 7:00PM at the Winchelsea Leisure Time Centre! Only \$5 a person
All equipment supplied
Wear suitable footwear
Lesley Mathison 0438 672 197



Help is available
Speak with someone today
Available 24 hours

13 11 14

WINCHELSEA GIRL GUIDES

Welcomes girls 6-15 yrs

Mondays, 4.30pm-6pm during school term
St John's Catholic Church Winchelsea
Guiding provides fun, friendship, and adventure. Developing teamwork, and leadership skills, whilst girls achieve goals, improve communities and grow in confidence.

3 FREE sessions to come along and try.

Yvonne Orchard ph 0448 672 630
or Lily Dell Rennie ph 0428 936 441

DEFIBRILLATOR MISSING

The newly installed Defibrillator outside the Netball change rooms has been missing for some weeks. If it could be replaced asap that would be great, no questions asked. These Defibrillators save lives

WINCHELSEA OP SHOP

DVD and CD SALE

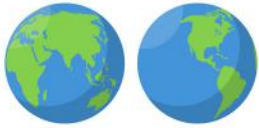
5 items for \$2.

This can include a mix of DVD's and CDs for total price of \$2
Sale ends 31/7/2025.



BRIDGE

Social Bridge is played at
Senior Citizens Centre
36 Harding Street Winchelsea
New players always welcome
Elaine Atkinson 0458 009 616



The Climate Report

Judy Cameron

Antarctic sea ice may be in terminal decline

(Source Alessandro Silvano Independent Research Fellow in Oceanography, University of Southampton in the 'The Conversation')

The ocean around Antarctica is rapidly getting saltier at the same time as sea ice is retreating at a record pace. Since 2015, the frozen continent has lost sea ice similar to the size of Greenland. That ice hasn't returned, marking the largest global environmental change during the past decade.

Melting ice typically makes the ocean fresher. But new satellite data shows the opposite is happening, and that's a big problem. Saltier water at the ocean surface behaves differently than fresher seawater by drawing up heat from the deep ocean and making it harder for sea ice to regrow.

The loss of Antarctic sea ice has global consequences. Less sea ice means less habitat for penguins and other ice-dwelling species. More of the heat stored in the ocean is released into the atmosphere when ice melts, increasing the number and intensity of storms and accelerating global warming. This brings heatwaves on land and melts even more of the Antarctic ice sheet, which raises sea levels globally.

Our new study has revealed that the Southern Ocean is changing, but in a different way to what we expected. We may have passed a tipping point and entered a new state defined by persistent sea ice decline, sustained by a newly discovered feedback loop.

Increase in Insurance Premiums

The Insurance Council of Australia says severe weather events in the first half of 2025 alone, including ex-tropical cyclone Alfred, led to \$1.8 billion in insurance claims in the past financial year. Premiums are expected to rise due to the growing frequency and intensity of extreme weather events. Insurers want the federal government to invest in mitigation and resiliency to help push premiums down.

Recycling in Surf Coast Shire

Surf Coast Shire

Ever wondered what happens to the items you put in your four kerbside bins once the truck drives away? A new set of videos lifts the lid of what happens to your recycling, food and garden waste (FOGO), glass and general waste, and the importance of getting the right things in the right bin.

Cr Leon Walker says "The technology used to sort and process materials is pretty incredible, such as the use of laser sorting for glass. However the videos clearly tell the story that if items are put in the wrong bins, this can cause major problems, such as batteries leading to fires. The most important sorting always happens at home"

Sorting your items correctly will help reduce waste, keep valuable resources in use and will help protect the environment for future generations. Did you know that 53% of what's in red-lid general waste bins doesn't belong in there? On average, general waste bins still contain 37% food and garden waste, 5% glass and 10% recycling. All of these materials can be recovered through the correct bins."

The International Court of Justice

The ICJ issued a unanimous opinion on July 23, 2025, that climate change is "an existential problem of planetary proportions that imperils all forms of life and the very health of our planet."

The court heard legal arguments from nearly 100 countries and international organizations before answering the two questions posed by the General Assembly: what are the obligations of states under international law with respect to climate change, and what are the legal consequences when such duties are breached and cause harm to people and states?

The court ruled that failure of a state to take appropriate action to protect the climate system from emissions—like fossil fuel production, consumption, exploration or the provision subsidies—may violate international law. Human Rights Watch has documented how fossil fuel production harms the rights of communities adjacent to fossil fuel infrastructure

The court also acknowledged that "conditions resulting from climate change which are likely to endanger the lives of individuals may lead them to seek safety in another country or prevent them from returning to their own," urging countries to avoid sending individuals back to their country of origin in such circumstances.

And the court concluded that countries' failure to protect the climate system triggers legal consequences, including revoking all measures contributing to climate harm.

States should now revise their national commitments on greenhouse gas emissions to collectively stay under the limit of 1.5 degrees Celsius of additional warming established by the Paris Agreement. Human Rights Watch will continue to push countries to commit to ambitious climate plans and a fossil fuel phase-out.

Letter to the Editor

Hesse Street Greening and Stormwater Treatment Project

To: <news@winchelseastar.org.au>

Plaudits to the Surfcoast Shire for the development of the proposed Hesse Street Greening and Stormwater Treatment Project.

This endeavour demonstrates that infrastructure can be generative - the outcomes are positive on multiple fronts, including the health of the Barwon River, the greening of Winchelsea township, the growth of shading, the renovation of stormwater, the protection of fauna and flora. These will undoubtedly help maintain and improve the wellbeing of locals and visitors into the future.

What's more, it says to me the shire is serious about investigating and investing in natural systems to redress environmental degradation. I'm particularly excited to see this happening in the Winchelsea township, and in this case, on the very street I feel lucky to live on.

Congratulations to the Surfcoast Shire and the Department of Energy, Environment and Climate Action.

Sincerely, Richard Butcher

Update on Deep Sea Mining

Surfrider Foundation Australia, Torquay

On Sunday 20 July, ocean lovers rallied on coastlines in 25 countries across the world in opposition to deep sea mining, a destructive new industry threatening the global ocean. In Australia over 600+ people took to the water to call on the Australian government to support a moratorium on the deep sea mining industry at this week's international meeting in Jamaica.

As surfers we spend majority of our time on the coast, surfing swells on sandbanks, points or reefs. We don't really think about it much but most of the swells that hit our coastlines are formed in the deep sea.

Unfortunately, these wild and untamed deep seas are at risk of exploitation by a destructive new industry called 'Deep Sea Mining'. Deep Sea Mining is a destructive practice that involves industrial-scale prospecting for metals and other minerals along the ocean floor. This could have severe ecological & cultural consequences, destroying sea-floors and fragile marine habitats, generating massive sediment clouds that smother marine life and release stored carbon, while harming sensitive marine mammals like whales and dolphins through noise pollution.

Currently, there are no commercial seabed mining operations - it is expensive, untested, unproven, and extremely destructive but right now, governments from around the world are convening for the crucial International Seabed Authority (ISA) meeting in Kingston, Jamaica (July 7 - 25), to decide if deep-sea mining will be permitted in international waters.

The good news

Around the world, communities are standing up to an industry that threatens our ocean, our climate, and our future. We can stop this practice before it starts by raising awareness and calling on the Australian Government to join 37 other countries globally calling for a moratorium on deep sea mining.



Now is the time to come together for the deep, just like we saw in the 1980s with the fight to protect Antarctica from being sliced up and sold off to the highest industrial bidder. We knew Antarctica had ecosystems that were playing a vital role in our earth's function and governments including Australia led the charge to protect these ecosystems. Now we are in a very similar situation with the Deep Sea. It's as biodiverse as a tropical rainforest, covering huge areas of our ocean, the deep sea is integral to healthy oceans. These unexplored depths are home to as many as 10 million species, a cornerstone of global fisheries and marine ecosystems. The deep sea also plays an important role in slowing human-induced climate change. This is why we are calling on the Australian government to support a moratorium (pause) on Deep Sea Mining.

Antique Repairs

By **Doug Burns** est. 1976

- All Furniture
- French polishing
- Carving
- Veneering
- Wood Turning
- Porcelain



Unusual Requests Welcome

180 Barwon Terrace, Winchelsea

0428 672 704



**Winchelsea
Supermarket**

Trading Hours
Monday to Saturday
8.30am to 7.30pm
Sunday
10am to 7pm
Ph: 5267 2676
29 Main St, Winchelsea



mainly music
est. 1990

Fun, Interactive music sessions for
pre-school children (0-4 y.o.) and
parents/caregivers

When: Mondays from 10 to 11 am
(runs during school terms)

Where: St Thomas' Hall
25 Barwon Tce.

To Enquire ring: 0407838256



Café La Hoot

have you tried
'owl' coffee?

1 willis st cafelahoot@gmail.com 0407 528 999

Winchelsea Churches



Winchelsea Uniting Church

0475 777 301

uca.winchelsea@gmail.com

Hesse St, Winchelsea 3241

Services 9.30am Sundays

St John the Baptist Catholic Church

0404598558

Father Joseph Panackal

Harding St, Winchelsea 3241

Winchelsea 5pm Sat. Aug 2, 9, 16, 23, 30

Anakie NO MASS

Meredith 9am Sun. Aug. 10, 24

Bannockburn 11am Sun. Aug. 3, 10, 17, 24

Inverleigh 4pm Sun. Aug. 17

St Thomas' Anglican Church

0477 672 042

Rev Barbara Colliver

stthomaswac@gmail.com

Barwon Tce, Winchelsea

Service 10am Sundays

Thought for the Week

"Find inner peace and you
will have endless energy.

The more you give, the more you receive.

After you have found your calling,
you work easily and joyously.
You never get tired."

Have a Blessed week.

John Bader
Christian Pastoral carer

'AI is not intelligent at all': Why our dignity is at risk

Charles Darwin University

The age of artificial intelligence (AI) has transformed our interactions, but threatens human dignity on a worldwide scale, according to a study led by Charles Darwin University (CDU).



Dr Maria Randazzo has found AI reshaped Western legal and ethical landscapes at unprecedented speed.

Study lead author Dr Maria Randazzo, an academic from CDU's School of Law, found the technology was reshaping Western legal and ethical landscapes at unprecedented speed but was undermining democratic values and deepening systemic biases.

Dr Randazzo said current regulation failed to prioritise fundamental human rights and freedoms such as privacy, anti-discrimination, user autonomy, and intellectual property rights – mainly thanks to the untraceable nature of many algorithmic models.

Calling this lack of transparency a "black box problem", Dr Randazzo said decisions made by deep-learning or machine-learning processes were impossible for humans to trace, making it difficult for users to determine if and why an AI model has violated their rights and dignity and seek justice where necessary.

"This is a very significant issue that is only going to get worse without adequate regulation," Dr Randazzo said.

"AI is not intelligent in any human sense at all. It is a triumph in engineering, not in cognitive behaviour.

"It has no clue what it's doing or why – there's no thought process as a human would understand it, just pattern recognition stripped of embodiment, memory, empathy, or wisdom."

Currently, the world's three dominant digital powers – the United States, China, and the European Union – are taking markedly different approaches to AI, leaning on market-centric, state-centric, and human-centric models respectively.

Dr Randazzo said the EU's human-centric approach is the preferred path to protect human dignity but without a global commitment to this goal, even that approach falls short.

"Globally, if we don't anchor AI development to what makes us human – our capacity to choose, to feel, to reason with care, to empathy and compassion – we risk creating systems that devalue and flatten humanity into data points, rather than improve the human condition," she said.

"Humankind must not be treated as a means to an end."


Human dignity in the age of Artificial Intelligence: an overview of legal issues and regulatory regimes was published in the Australian Journal of Human Rights.

THE ANGLICAN PARISH OF COLAC
WARMLY INVITES YOU TO

FESTAL EVENSONG

TO CELEBRATE AND
GIVE THANKS FOR

THE RESTORATION OF CHRIST CHURCH



AND TO HEAR FOR THE FIRST TIME
FANFARE FOR BIRREGURRA
COMPOSED BY EDWARD FAIRLIE

Sunday August 24th at 3pm

SLADEN STREET, BIRREGURRA

Rsvp anglicancolac@outlook.com August 14th

ANGLICAN PARISH OF COLAC

Rector: 03 5231 3040 www.anglicancolac.org
Fr Jeremy Morgan anglicancolac@outlook.com www.facebook.com/ColacAnglican

Winchelsea hosts Health & Wellness Expo to spotlight local health professionals and facilitate community connections

Elaine Atkinson

OUR SUPPORTERS:





Live demonstrations

- 9-9:30: Tai Chi - Desma
- 9:30-10: Kid friendly Qi Gong + Kung Fu - Evan
- 10-10:30: Kids fun activity on CPR and dialling 000 - Ambulance Victoria
- 10:45-11: Health Business strategies + specialist insights - NAB
- 11-11:30: Live Chiropractic care - Dr Emily McDonald
- 11:30-12: Core work-out with Daz - Winchelsea Health Club
- 12-12:30: 'Get moving' - exercise physiologist, Hesse Rural Health
- 12:30-1: Mindset strategies - Helen Long
- 1-1:30: Interactive Karate Demonstration - Winchelsea Karate
- 1:30-2: Sound healing - Vicki



Winchelsea is set to host a Health & Wellness Expo showcasing local health professionals and services, highlighting the Town's commitment to fostering a caring, connected, and inclusive community.

With the town's population projected to grow to 18,000 by 2051, the need for accessible, trusted, and community-focused healthcare has never been more vital. The expo will offer residents an opportunity to meet local GPs, allied health providers, and wellness professionals who are passionate about supporting the health needs of families, individuals, and the ageing population.

"This forum is about more than just services—it's about building real connections between professionals and the people they care for," said John Tebbutt, President of Growing Winchelsea. "By creating awareness and trust, we're laying the foundations for a healthier, more supported future."

Attendees will be able to explore a wide range of services available in Winchelsea, from mental health support and physiotherapy to aged care, family health, and wellness programs. The expo also aligns with Growing Winchelsea's values of inclusiveness, belonging, and endeavour, reinforcing its mission to support local initiatives that empower the community and enable sustainable growth.

As Winchelsea evolves, events like the Health & Wellness Expo ensure that the heart of the town—its people and their wellbeing—remain a top priority.

Health & Wellness Expo
 9 am - 2 pm Sunday 10 August 2025
 Shire Hall
Free Entry – All community members welcome

For media enquiries, please contact:
 Elaine Atkinson Mobile 0458009616
 Email: secretary@growingwinchelsea.com

New member on the Hesse Rural Health Board of Directors

Hesse Rural Health

In July, Hesse Rural Health welcomed Coralie Nash to our Board of Directors. Coralie is a health care professional with a commitment to quality, equity, and sustainability in health. With a background as a Registered Nurse, her career has spanned intensive care, general practice, specialist medical management, pre-clinical research, and occupational health. She currently works at WorkSafe Victoria, where she oversees the management of health care providers and leads the development of policies and services that support the recovery of injured workers.

Coralie is passionate about building strong systems through good governance and positive workplace culture. A Graduate of the Australian Institute of Company Directors, Coralie also serves as President of Duck for Cover, a nationwide not-for-profit organisation supporting independent artists. Her community involvement includes past roles with Meredith Kindergarten, Golden Plains Hockey Club, and the Teesdale Recreation Reserve. Coralie divides her time between Geelong and her farm in Barwon Downs, where she enjoys the natural beauty of the Otways and the chance to recharge.



Coralie Nash

Ian Whiting

Angela Hurren

Two existing Hesse Board Directors, Ian Whiting and Angela Hurren, were also re-appointed for a further three-year term in July. Both bring invaluable skills and provide great contributions to Hesse. Ian Whiting first joined the Hesse Board in 2020 and remains the Board Chair again this year after holding the position since December 2021. Angela Hurren commenced on the Hesse Board in 2023 and has held the Chair position of the Consumer Advisory Committee and remains the current Chair of the Finance, Risk & Audit Committee.

Hesse welcomes Coralie, and the return of Ian and Angela, to our Board of Directors.



Winchelsea Community House Inc. A6247K
 28 Hesse Street, PO BOX 75, WINCHELSEA, Vic. 3241
Phone: (03) 5267 2028 **Email:** manager@winchhouse.org.au
ABN: 48 932 340 254

Yoga

At the Winchelsea Shire Hall

Monday Nights 7pm
Vinyasa Yoga

Thursday Nights 6.30pm
Mat Pilates

Saturday Morning 8.30am
Yoga Flow

10 Class Pass - \$190

5 Class Pass - \$105

3 Class Pass - \$69

Casual Class - \$25

Phonics with Robot Reg

Friday Mornings

Walkers – 2 years 10.15am

Pre-School 3 – 5years 11.15am

'A fun, High energy class to introduce and teach Phonics Skills to Kids'

Bookings at robotreg.com.au



Friday's

10.30am – 12.30pm

"Sip, Chat, Share, Care"

In the Winchelsea Shire Hall. Everyone Welcome, Gold coin donation.

JDS WINCH
 JACQUE'S DANCE STUDIO

WINCHELSEA TODDLERS

TUESDAY MORNINGS
 9:30AM-10:00AM
 WINCHELSEA SHIRE HALL
 \$10 PER CHILD - CASH OR CARD AVAILABLE-
 PAY AS YOU GO

DM TO ENROL

Contact Jacque - 0448046551 | [@jacquedancestudio](https://www.instagram.com/jacquedancestudio)

JACQUE'S DANCE STUDIO PRIDES ITSELF ON A PRESSURE FREE, FRIENDLY AND WELCOMING ENVIRONMENT FOR CHILDREN OF ALL ABILITIES TO ENJOY DANCING!

TAI CHI

Friday Mornings in the Winchelsea Community house
 9am - 10am

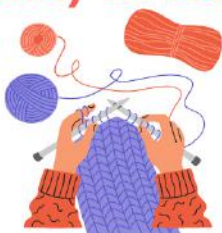
\$10 Per Class



WINCHELSEA KNITTING GROUP

Thursday Mornings 10.30 -12.00
Winchelsea community house.

All Welcome, Learn to knit or bring a project to work on while you enjoy a cuppa and a chat



Craft & Crochet Group



\$5 per person.



1pm, every second Saturday
in the Winchelsea community house.

Register your interest at
reception@winchhouse.org.au

Next Class, Aug 9th

Winchelsea Primary School

60 Main Street, Winchelsea 3241
 Email: winchelsea.ps@education.vic.gov.au
 Website: www.winchps.vic.edu.au
 Phone: 5267 2134

What's Ahead for Term 3

There are a number of activities and celebrations being planned for Term 3.

The Grade 5/6s continue their Lift Up Program on Friday mornings and have SSA Basketball and Cricket to look forward to this term. There is also a BioCats excursion on August 18. The Grade 6s also continue their community visits to Hesse Rural Health on some Thursdays. The Grade 5s will now head to the kindergartens to begin building connections with our 2026 Preps.

The Grade 3/4s are headed to the Booln Booln Cultural Centre on Friday, 8 August.

The Grade 1/2s will begin a partnership with Common Ground Project in Freshwater Creek, which is expected to include incursions and an excursion.

The Preps will celebrate 100 days of Prep on Friday, August 8.

As a whole school, some celebrations include:

- Science Week from August 11
- Book Week from August 18, with the parade and dress up day on Thursday 21 August
- Fathers Day Celebration (Stall) on September 4
- R U OK Day (wear yellow) on September 11
- Footy & Sports Colours Day on Friday 19 September



MONEY FOR FACILITIES - WHAT HAPPENS NEXT?

You may have heard that the school has received funding to work alongside the Victorian School Building Authority (VSBA) to develop a masterplan for our school site. Here's an overview of what happens next.

1 JUNE - CONSULTATION

The Principal leads broad consultation with students, staff, School Council, parents and the wider community.

The consultation seeks to identify strengths and opportunities for the current site.



2 JULY - ASSET MANAGEMENT PLAN

The Principal provides an Asset Management Plan. This part summarises the strengths and opportunities identified in the consultation. It also outlines the school's vision for learning, community and wellbeing.



3 SEPT - SCHEMATIC DESIGN

Principal works alongside VSBA and an architect to develop the masterplan.

The school will seek School Council approval for the masterplan.



4 NOVEMBER - WAIT FOR FUNDING

The school community waits for funding to be provided for building works (this could be for part or all of the project).



PREP 2026 ENROLMENTS

**ENROLMENTS ARE NOW
DUE FOR 2026**

**IF YOU HAVE A CHILD
READY FOR SCHOOL
NEXT YEAR - PLEASE
CONTACT THE SCHOOL
TO OBTAIN DETAILS OF
ENROLMENT AT OUR
SCHOOL/TOUR AND
ENROLMENT FORMS**

What's on Weekly

MONDAY-FRIDAY

WINCHELSEA COMMUNITY HOUSE

9am-2pm, 28 Hesse St, Winchelsea
(03) 5267 2028

WINCHELSEA TOY LIBRARY

9am-2pm (03) 5267 2028
Winch Community House,
28 Hesse St, Winchelsea

MONDAY-SATURDAY

WINCHELSEA HEALTH CLUB

Accessible - 24 hours
Eastern Reserve, 70 Hopkins St
5267 2336.

MONDAY

CO-WORKING & STUDYING SPACE

Mon and Thurs 9am-2pm \$10
Winchelsea Community House
28 Hesse St, Winchelsea

MAINLY MUSIC

Interactive Music 0-4yrs
10-11am (school terms)
St Thomas' 25 Barwon Tce
0407838256

WINCHELSEA GIRL GUIDES

4.30pm-6pm (School term)
St John's, Mercer /Harding St
Yvonne Orchard 0448 672 630
Lily Dell Rennie 0428 936 441



1ST MODDA/1ST WINCHELSEA SCOUTS

Cubs: 6:30-8pm (School term)
Modewarre Hall, Cape Otway Rd
Marie McPadden 0409 330147

VINYASA YOGA

7pm \$25
Winchelsea Shire Hall,
28 Hesse St, Winchelsea

WINCHELSEA CRICKET CLUB AGM

7pm Monday 4 August
Members' Room, Eastern Reserve

FUTURE EVENTS 4 WINCHELSEA WINCHELSEA FORUM

Monday, 11 August 2025 at 7.00 pm
The Hub Eastern Reserve, Winchelsea

TUESDAY



Senior Citizens Centre,
36 Harding St, Winchelsea
Elaine Atkinson 0458 009 616



1ST MODDA/1ST WINCHELSEA SCOUTS

Joeys: 5-6pm (School term)
Scouts: 6:30-8:30pm (School term)
Modewarre Hall, Cape Otway Rd
Marie McPadden 0409 330147

WEDNESDAY

WINCH WALKERS

9:30-10.30am
Mud Hut (Opposite La Hoot Cafe)
Barwon Terrace, Winchelsea
ralexander@hesse.vic.gov.au

SENIORS SHOPPING & CUPPA WAURN PONDS

for Winchelsea Seniors Card Holders
30 July, 13 August, 27 August
Contact Jill 0427 633 277 to book

Winchelsea Community Market

First Sunday on the Month (except November)



Shire Hall
9am to 1pm

Upcoming Dates:

July 6th	Nov 9th (2nd Sunday)
August 3rd	Dec 7th
Sept 7th	Jan 4th
Oct 5th	Feb 1st

Food, Produce, Coffee, Plants, Crafts
Homewares, Candles, Bags, Skincare
Jewellery, Soap + Baby Goods

Stallholders - Contact via Growing Winchelsea Inc Website
(Scroll Down to Market)



Winchelsea
Community
Foodbank

Fridays, 12 - 2PM
30-32 Hesse Street Winchelsea

For more info, contact Tess
healthpromotion@hesse.vic.gov.au
0417 848 292



All welcome
No eligibility requirements



Join a Winchelsea Community Kitchen



Learn

Cooking skills, budgeting and recipe's

Cook

With a small group on a regular basis

Share

A delicious meal cooked together

Scan the QR code to sign up



OR Contact Tess:
healthpromotion@hesse.vic.gov.au
0417 848 292



JULY/AUGUST

What's On

This is a recurring calendar. Please confirm details with the organiser/venue if you'd like to attend.

To add an event to the calendar, please email news@winchelseastar.org.au

WINCHELSEA ZUMBA DANCE

Combined Zumba Fitness and Gold class.
6:30-7:30pm @The Globe Theatre.
Simone Dunmore: 0468 375 036
zumbawithsimone09@gmail.com

MAT PILATES

7pm \$25
Winchelsea Shire Hall,
28 Hesse St, Winchelsea

WINCHELSEA MEN'S SHED

9.30am 51 Hesse Street, Winchelsea
Ray Atkinson 0407839139
winchmenshed@gmail.com

SENIOR CITIZENS CENTRE

Wednesdays 1- 3.00 pm
36 Harding St, Winchelsea
Jean Shinnars 52672263, 0427672263
jeanshinnars@gmail.com

MOTHER GOOSE SONG & RHYME

2pm (School term) FREE
Winchelsea Community House,
28 Hesse St, Winchelsea

WINCHELSEA HISTORICAL SOCIETY

Wednesday 1-4:pm, Friday 10am-3pm
Hesse St, Winchelsea
www.facebook.com/

MEL'S DANCE CENTRAL

Wed afternoons/evenings
Pre-school - teens
Winch Senior Citizens Club
www.melsdancecentral.com.au

CWA WINCHELSEA

7-8.30pm 2nd Wed monthly
Senior Citizens, Harding St
winchelsea.cwa@gmail.com



SES WINCHELSEA

7.30pm 132500
323 Mousley Drive,
Winchelsea



THURSDAY

CHAT WITH YOUR COUNCILLOR TONY PHELPS

10am-12pm First Thursday of month
Winchelsea Shire Hall
28 Hesse St, Winchelsea

COWORKING & STUDYING SPACE

Mon and Thurs 9am-2pm \$10
Winchelsea Community House,
28 Hesse St, Winchelsea

WINCHELSEA PLAYGROUP

10am-12pm (School term) \$5
St Thomas Hall, 27 Barwon Tce
winchelseaplaygroup@gmail.com

WINCHELSEA PICKLEBALL

10-11.30am
Leisure Time Centre, Gosney St
Lesley Mathison 0438 672 197

WINCHELSEA KNITTING GROUP

10.30am-12pm FREE
Winchelsea Community House,
28 Hesse St, Winchelsea

WINCHELSEA COMMUNITY FOODBANK

12-2pm 30 Hesse St, Winchelsea
healthpromotion@hesse.vic.gov.au
0417 848 292

WINCHELSEA MOVIE CLUB

7.30 (3rd Thurs each month)
Globe Theatre, Main St, Winchelsea
growingwinchelsea.com/project/winchelsea-movie-club/

FRIDAY

TAI CHI

9am-10am \$10
Winchelsea Community House,
28 Hesse St, Winchelsea

PHONICS WITH ROBOT REG

10.30am (1-3 yrs) 11.30am (3-5 yrs)
(School terms)
www.robotreg.com.au/pages/shae

WINCHELSEA MEN'S SHED

For the Community

NEW MEMBERS WELCOME

Every Wednesday from 9.30am
51 Hesse Street, Winchelsea

KINDLING/OFFCUTS \$7.00 bag

Pickup Wednesdays 9.30-2.30
For delivery, call Bill 0438 083 373

NESTING BOXES Birds/animals

NEED A JOB DONE?

Woodworking, Furniture Repairs
Call in Wednesdays to order

Ray Atkinson (Co-ordinator)
0407839139
winchmenshed@gmail.com



Fun, Interactive music sessions for
pre-school children (0-4 y.o.) and
parents/caregivers

When: Mondays from 10 to 11 am
(runs during school terms)

Where: St Thomas' Hall
25 Barwon Tce.

To Enquire ring: 0407838256



What's on Weekly

CHATTY CAFÉ

10.30am-12.30pm
Gold Coin Donation
Winchelsea Shire Hall,
28 Hesse St, Winchelsea

WINCHELSEA HISTORICAL SOCIETY

Friday 10am-3pm
Hesse St, Winchelsea
www.facebook.com/

WINCHELSEA SENIOR CITIZENS

Fridays 1.00 pm - 3.00 pm
36 Harding Street, Winchelsea
Jean Shinnars 52672263, 0427672263
jeanshinnars@gmail.com



WINCHELSEA RSL

7.30 15 August,
1.30 19 Sept, 17 Oct,
7.30 21 Nov, 12.00 19 Dec
Winchelsea Men's Shed,
Hesse St, Winchelsea
David Loone 0488 165 109

GEELONG REGIONAL LIBRARY

(MOBILE) 2-5pm
Old Shire Hall, 28 Hesse Street
0408384331 (During scheduled stops)

SATURDAY



PARKRUN

8am Trebeck Reserve
Sussex St, Winchelsea
www.parkrun.com.au/trebeckreserve/

FLOW YOGA

8am, \$25
Winchelsea Shire Hall,
28 Hesse St, Winchelsea

WINCHELSEA LAND AND RIVERCARE

MONTHLY WORKING BEE

Saturday August 2
9am End of Dwyer St.
Rod Stone 0428 549318
Stewart Mathison 0428 672054



Landcare
Victoria

SURF COAST ARTS TRAIL 2025

Saturday 2 & Sunday 3 August



WINCHELSEA STAR PRODUCTION/COFFEE MEETING

9-10am (Last Sat monthly)
La Hoot Cafe, Main Street
www.winchelseastar.org.au
5273 0295

WINCHELSEA CROCHET GROUP

1.30pm 2nd Saturday each month \$5
Winchelsea Community House,
28 Hesse St, Winchelsea
reception@winchhouse.org.au

ST JOHN THE BAPTIST CATHOLIC CHURCH

Mass 5pm each week (Winter season)
Harding St, Winchelsea 0404598558

WINCHELSEA COMMUNITY DINNER

6.30pm (Last Sat each month)
Hall, Harding St Winchelsea
Bring plate & gold coin donation if you can

SUNDAY

RUNNING GROUP

8am Meet at La Hoot

CHEESE MAKING WORKSHOP

24 August Shire Hall
shirehall@winchhouse.org.au
52672028



WINCHELSEA COMMUNITY MARKET

9-1pm, 1st Sunday monthly (except Nov)
Shire Hall car park, Main St
growingwinchelsea.com/project/winchelsea-community-market/

WINCHELSEA UNITING CHURCH

Service 9.30am each week
Hesse St, Winchelsea
0475 777 301
uca.winchelsea@gmail.com

ST THOMAS' ANGLICAN CHURCH

10am each week Barwon Tce, Winchelsea
0477 672 042, stthomaswac@gmail.com

WINCHELSEA ZUMBA DANCE

Combined Zumba Fitness and Gold class.
Fun for all ages and abilities.
10:30am-11:30am @The Globe Theatre.
Simone Dunmore: 0468 375 036
zumbawithsimone09@gmail.com
(Pre-booking required for by EOB Wed)

Chat with your Councillor

Tony
Phelps

1st Thursday of the month
10am-12pm
Winchelsea Shire Hall
co-working/study space



AGM



We declare all positions vacant

President

Vice President

Junior Vice President

Secretary

Treasurer x 2

Junior Co-Ordinator

Committee Members

Monday 4th August 7PM

Members Room - Eastern Reserve



SERVICES & ACTIVITIES IN WINCHELSEA

VLINE TRAIN SERVICES

TO MELBOURNE:

Mon - Fri 6.21(coach) 07.55, 11.10, 14.04, 16.58, 19.21
Sat - Sun 9:34, 14.04, 16.58 19.18

TO WARRNAMBOOL:

Mon - Fri 8.58, 11.51, 14.46, 17.28 (coach), 18.43, 20.53
Sat - Sun 8:48, 11.41, 14.46, 20.38



COUNTRY WOMEN'S ASSOCIATION

7pm second Wednesday of month
Winchelsea Senior Citizens' Hall

Join us. *A role for everyone*



Nationally accredited training to help our community.
Pop in to meet your crew **Wednesdays 7:30pm**

Winchelsea Unit 325 Mousley Drive **132 500**

Winchelsea and District COMBINED PROBUS CLUB



Senior Citizens Rooms,
Harding St, Winchelsea.
New members always welcome.
Enquiries Lorraine 0417 467 927



SOCIAL BRIDGE

Senior Citizens Centre
36 Harding Street Winchelsea
New players always welcome
Contact Elaine Atkinson 0458009616

WINCHELSEA TRANSFER STATION

55 Cressy Road, Winchelsea

Tuesday	2pm-4pm	Saturday	1.30-3.30pm
Thursday	2pm-4pm	Sunday	9.30-12.30pm



Closed on Christmas Day,
but open on other public holidays
that fall during their normal operating hours.
www.surfcoast.vic.gov.au/disposalsites



WINCHELSEA GIRL GUIDES

Our Unit meets at the Catholic Church Hall,
Harding St Winchelsea each Monday 4.30pm-6pm
All girls 5yrs- 15yrs Welcome!
Contact Yvonne Orchard 0448 672 630
or Lily Del Rennie Ph. 0428 936 441



1st Modda & 1st Winchelsea SCOUT GROUP

Joeys: Tuesdays of school term 5-6pm
Cubs: Mondays of school term 6:30-8pm
Scouts: Tuesdays of school term 6:30-8:30pm
All at Modewarre Hall, Cape Otway Rd
Venturers: Wed at Walton's Rd Venturer Den
Contact Marie McPadden 0409 330147



BUS TO THE HUB

For reservations on the weekly bus
to the Eastern Reserve Hub,
please phone 52671202.

SURF COAST MOBILE LIBRARY

Hesse St, Fridays, 2pm-5pm
Surf Coast Mobile Library
parked in Hesse Street (outside Shire Hall)
Fridays 2:00 and 5:00pm unless it is a Public Holiday.

WINCHELSEA TAXI

0429 672 888 or 5267 2888

Wheelchair accessible
10 seater bus available.

WINCHELSEA PLAYGROUP

Every second Thursday 10am-12pm
St Thomas Anglican Church Hall
cnr Barwon Tce and Hopkins St, Winchelsea
Contact: Danni Menzies 0432019944
winchelseaplaygroup@gmail.com
Facebook - Winchelsea Playgroup 2019
New families welcome

WINCHELSEA CONCRETING

• Driveways • Sheds • Decorative Concrete • Raft Slabs

Robert Murphy

☎ 0438 235 237

✉ winchelseaconcreting@outlook.com

DownRyte Excavations



- Excavations
- Drilling and Piling
- Rock Placement
- Tree and Stump Removal

Sean Hunwick

Mobile: 0409 447 288
Email: downryte@activ8.net.au

direct TEMPORARY FENCING

FOR HIRE - SUPPLIED & ERECTED - 7 DAYS
GEELONG - BELLARINE - COLAC - SURF COAST
PHONE CAM 0417 310 800

SOUTH-WEST — PAINTING — GROUP

Contact us:



0431 719 218



www.southwestpaintinggroup.com.au



matt@southwestpainting.com.au

We specialise in:

- New Homes
- Texture Feature Finishes
- New and Old Cabinetry Coatings
- Commercial Projects
- Maintenance Work
- Residential Work
- Wallpapering
- Pre-Sale Painting
- Timber Decking Rejuvenations

M & L DRAYTON

PLUMBING SERVICES

REG No 24356 C/A No C02594

- Domestic and Rural Plumbing
- Roofing
- Sewerage & Septic
- LPG & Natural Gas Connections
- Motorised Drain Cleaning
- Backhoe Hire

Phone Mark 5288 7244

PO BOX 98 WINCHELSEA 3241

Mobile 0428 520 142



DRIVEWAYS, CARPORTS, CROSSOVERS,
FOOTPATHS, SHED SLABS, STAIRS
HOUSE SLABS, EXPOSED, SEALING & MORE

CONTACT ALISTER NOW FOR A QUOTE

☎ 0411871950

✉ AMACONCRETING1@GMAIL.COM



WINCHELSEA FACEBOOK



Community, Sports, Churches and Non-profits

What's on in Winchelsea	facebook.com/WhatsoninWinchelsea
Winchelsea FREE	facebook.com/groups/winchelseafree
Winchelsea Community Information	facebook.com/groups/207538644446972
Winchelsea Classifieds 3241	facebook.com/groups/216942861684082
Winchelsea Lost and Found	facebook.com/groups/768187693217518
Winchelsea Op Shop	facebook.com/HospitalAuxiliaryOpShopWinchelsea
Winchelsea Shire Hall	facebook.com/WinchelseaShireHall
Winchelsea Community House	facebook.com/winchelseacommunityhouse
The Green Winchelsea Residents	facebook.com/groups/515322772623126
Growing Winchelsea Inc	facebook.com/growingwinch
Winchelsea Star	facebook.com/TheWinchelseaStar
Winchelsea Movie Club	facebook.com/winchelseamovies
Winchelsea Community Market	facebook.com/100083362387611
Winchelsea Land and River Care Group	facebook.com/envirowinchelsea/
Upper Barwon Landcare Network	facebook.com/UpperBarwonLandcare
Winchelsea & District Historical Society Inc	facebook.com/Winchelseaanddistricthistoricalsociety/
Winchelsea Wildlife Shelter	www.winchelseawildlifeshester.com/
SCARS - Surf Coast Animal Rescue Service	facebook.com/groups/415211698950674
Winchelsea Gardeners	facebook.com/groups/779878518703025
Winchelsea & District Historical Society	facebook.com/Winchelseaanddistricthistoricalsociety/
Winchelsea Repertory Society Inc	facebook.com/winchrep/
Winchelsea Globe Theatre	facebook.com/Winchelsea-Globe Theatre-164790897641678
Winchelsea Uniting Church	facebook.com/winchelseaunitingchurch
St Thomas' Anglican Church	facebook.com/StThomasWinchelsea
St John the Baptist Catholic Church	facebook.com/pages/Winchelsea-Catholic-Church/101775670163180
Winchelsea Mainly Music	facebook.com/groups/668500343953191/
Winchelsea Health Club	facebook.com/WinchelseaHealthClub
Winchelsea Playgroup (School terms only)	facebook.com/groups/551663435367031
Winchelsea Girl Guides	www.guidesvic.org.au/
Winchelsea/Modewarre Scouts	facebook.com/1stModewarreScouts
Winchelsea Fire Brigade	facebook.com/winchelseafirebrigade/
Winchelsea SES	facebook.com/groups/WinchSES
Country Women's Association - CWA Winchelsea	facebook.com/pg/CWAWinchelsea/
Winchelsea Bowls Club	facebook.com/Winchelsea-Bowls-Club-533783333344345/
Winchelsea Blues Cricket Club	facebook.com/groups/8999049476/
Winchelsea Blues FC	facebook.com/WinchelseaFNC/
WYLD Winchelsea Youth Leisure and Drop in	facebook.com/groups/569737570027065/
Lions Club of Winchelsea	facebook.com/LionsWinchelsea
Winchelsea Probus	facebook.com/893535194971083
Winchelsea Golf Club	facebook.com/winchelseagc/ facebook.com/groups/1324943804676697
Winchelsea Zumba Crew	facebook.com/groups/479475585109144

Dementia expert calls for urgent investment in brain health at National Press Club

UNSW Sydney

- UNSW's Scientia Professor Henry Brodaty calls for a national brain health campaign to boost productivity
- New research shows dementia risk can be reduced with no added cost to the health system
- Dementia could cost Australia over \$7 billion a year by 2058 without action on prevention



This week at the National Press Club of Australia, Professor Henry Brodaty, a renowned clinician, researcher, policy advisor and Co-Director of UNSW's Centre for Healthy Brain Ageing (CHeBA), delivered a powerful address: 'Hope Beckons', urging the Federal Government to back

prevention-focused dementia research as a national productivity strategy.

"We are at a turning point in the fight against Alzheimer's disease. The science is clear: dementia is not inevitable, and we now have the tools to delay onset and slow progression," Prof. Brodaty said.

Over 400,000 Australians live with dementia, and this is expected to double by mid-century, carrying an estimated \$3.7 billion economic burden in direct costs annually. "We don't have a magic doorway out of this crisis, but we do have prevention, through smart investment in proven programs," Prof. Brodaty said.

Evidence of impact without additional cost

In his address, Prof. Brodaty highlighted the delivery of the world's largest digital dementia prevention trial led by CHeBA: Maintain Your Brain. The findings were compelling, highlighting that personalised, lifestyle-based intervention could significantly reduce dementia risk and improve cognitive and other health outcomes, all without adding extra burden to the healthcare system.

New results announced today and published in the Journal of Prevention of Alzheimer's Disease, quantified the differences in costs – direct healthcare and program costs – and effectiveness outcomes between the intervention and control groups from a healthcare sector perspective.

The findings confirm that the intervention is cost-neutral over three years, delivering measurable cognitive and health benefits at no additional cost compared to standard care.

The trial was the largest online randomised controlled trial of its kind, involving more than 6,100 Australians aged 55-77 with at least two modifiable risk factors for dementia.

After three years, participants who received personalised online coaching in physical activity, nutrition, cognitive training, and mental health showed significant improvements in cognitive performance and greater reductions in dementia risk compared to those who received general health information alone.

Crucially, there was no significant difference in cost per person over the trial period. The costs of the program were almost completely matched by the savings in health costs over three years, indicating that the program delivers results without straining health budgets.

"With Australia's ageing population and growing dementia burden, investing in preventive programs could offer substantial

health system savings while improving quality of life for older Australians," said Prof. Brodaty.

Brain health is a productivity issue

Dementia is not only a health crisis - it's an economic one.

Australia's workforce is ageing. The proportion of workers aged 55 and over has doubled over the past three decades, now sitting at 19%. Maintaining their cognitive health is vital to national productivity.

"With retirement ages rising and older adults participating more in the workforce, supporting cognitive health is a smart economic strategy," Prof. Brodaty said.

Family carers, often women, also face career sacrifices to care for loved ones with dementia, compounding productivity losses. Prevention is not just about adding years to life, but keeping Australians engaged, independent, and contributing longer.

"People engaged in Maintain Your Brain use fewer healthcare resources which offsets the cost of delivering the program. In the long run, the program will deliver additional benefits on cognitive, physical, mental and social health that will more than pay back its costs," Prof. Brodaty said.

A field transformed: The rise of dementia research

The Maintain Your Brain trial builds on decades of scientific momentum – and Australia has played a major role in that progress.

"Research is our friend here," Prof. Brodaty said. "And the evidence base is growing stronger every year."

Next week, over 8,000 researchers and clinicians – many of them early-career – will gather at the Alzheimer's Association International Conference in Toronto to explore the latest global developments in dementia prevention, diagnosis and care.

"This is a dramatic shift from just 50 years ago," Prof. Brodaty said. In 1972, not a single journal was devoted to dementia or Alzheimer's disease. Today, there are more than 100 specialised journals publishing cutting-edge research across these fields.

"Over four decades, we've moved from hopelessness to hope, from stigma to science. I'm proud to have been part of this transformation."

A call to action

In 2024, the Australian Government released its National Dementia Action Plan. Prof. Brodaty says there needs to be immediate investment in a National Dementia Risk Reduction Program, built on the proven Maintain Your Brain model.

"It's time for a national movement for brain health, backed by research, scaled with urgency, and funded to save lives and money."

Australia cannot afford to delay. Investing in dementia prevention now will secure a healthier, more productive, equitable and resilient future for all Australians.

Photo: AAP/Lukas Coch



Winchelsea Tennis Club 21 Armytage St Winchelsea
<https://www.facebook.com/groups/770786371589798>

Winchelsea Tennis Club

Fletcher Allen

Round 6 Review – The Rematch Rumble

After a mid-season nap, the Winch night squad returned to settle the score with Wandana Heights – remember that spicy draw from Round 1?

Matt and Fletch kicked things off with a 6-1 smackdown, while Karthik got off to a flyer... then got crash-landed 3-6.

Fletch and Michelle finally found their groove and took the W 6-3 (about time), while Matt dished out a fresh donut – 6-0, zero crumbs given.

Adri and Karthik teamed up for a new combo... and might be heading back to the lab after a 2-6 loss. Skipper Fletcher brought it home with a tidy 6-2 win!

Final score: Winch 4 sets to 2, 29 games to 18. Boom.

Revenge served. Weather might rain on next week's parade – but we'll be ready either way!



Victorian Drought Freight Network will improve freight routes for fodder transport

Agriculture Victoria

Changes will now allow loads up to 84 tonnes – a 15-tonne increase on the usual limit. Eligible vehicles include 36.5 metre long A-Doubles and B-Triples.

The Victorian Drought Freight Network allows operators to deliver grain and fodder to central pick-up points. Farmers can then collect and transport the feed to their properties in smaller vehicles.

This initiative has been developed with the Department of Transport and Planning, Victorian Farmers Federation and the Livestock and Rural Transport Association of Victoria.



Get more information or apply for a free network permit at: <https://shorturl.at/l345G> Permits are free and essential to avoid a fine.

If bringing in fodder from other states (except NT or Tas) drivers must apply for either a plant health certificate or a permit issued by Agriculture Victoria.

For more information or to apply for a free permit visit <https://go.vic.gov.au/4kKwr1R>

Perhaps a one-stop-shop for drought relief could help you access the support you need

Victorian Farmers Federation

The new Nutrien Ag Solutions funded initiative, the Victorian Drought Support Program, will support the VFF to employ a Drought Support Advisor to help farmers to access drought support grants, coordinate well-being events and act as a link between farmers and decision makers to identify gaps in drought support.

VFF President Brett Hosking said "Farmers are telling us they need a central point to contact for drought assistance and the issues they're facing. Farmers can directly contact VFF Drought Support Advisor, Kim Tupper, who will help streamline drought applications, connect farmers with financial counsellors and mental health services, and provide risk management support."

"We know the impact of this drought is far-reaching and will linger for years. It's so important we have a resource on the ground listening to farmers every day and feeding that back, so we can direct support to where it's needed and most effective," Mr Hosking said.

Farmer feedback received from the initiative will be used to help guide decision making regarding further drought support administered by the VFF's Disaster Relief Fund.

More information, including drought assistance resources and how to contact the Drought Support Advisor can be found on the VFF website.

CONCRETER

- * DRIVEWAYS
- * FOOTPATHS
- * KERB & CHANNEL
- * GARAGES & SHED SLABS
- * STEPS
- * WHEELCHAIR RAMPS
- * VERANDAHS
- * PATIO AREAS
- * PLAIN OR COLOURED CONCRETE
- * CONCRETE CUTTING & REMOVAL

VINCE

0412 840 704

Mowers & Chainsaws

Repairs to all makes and models of ride on mowers, domestic mowers, pumps, chainsaws, brushcutters and small engines.

Trading Hours: Mon - Fri 8am - 5pm Saturday 8am - 12 noon

5267 2266 Cnr Princes Hwy & Lennox St Winchelsea

www.allaboutmowers.com.au

accounts@allaboutmowers.com.au



TRENCHES & HOLES PTY LTD.



PHILLIP ROBERTSON

☎ 0427 672 945

WINCHELSEA

- General Earth Works
- Driveways
- Trencher
- Kanga Loader
- Grader
- Excavator Work (3.5 & 6.5 Tonne)
- Tip Truck
- Rock Breaker
- Post Holes & Shed Footings

A.B.N 74006896898

STS
ACCOUNTING
GROUP

**Your Taxation
&
Superannuation
Specialists.**

Winchelsea

5267 2673

www.surftax.com.au

venig1064

WINCHELSEA LIONS CLUB 022559

30 Members

Last financial year contributed 4000 hours of time and effort which generated in excess of \$24,000 to support local community, national and international projects

**COME AND JOIN
WINCHELSEA LIONS**

winchelsea.vic@lions.org.au
(03) 4224 0226

Contact us today and a Lions member will be in touch to welcome you to the Club.



**WORPEL
CUSTOM
FURNITURE**

- BESPOKE TIMBER FURNITURE
- TIMBER VANITIES
- BARNDOORS
- KITCHEN, BATHROOM & WARDROBE JOINERY
- REPAIRS & RESTORATION

0439013145

worpelsam@yahoo.com.au

25A Alsop Drive Winchelsea



MRP
Steelworx

Matthew Partridge
p 0418 672 334

[e mrpsteelworx@yahoo.com.au](mailto:mrpsteelworx@yahoo.com.au)

Welding Service

- Onsite welding
- Farm maintenance
- Farm machinery & equipment repairs
- Cattle & sheep yards
- Custom built trailers
- Supply & install gates



Winchelsea Football Netball Club Inc

Hopkins St, Winchelsea winchelseafnc@hotmail.com

Blues News

Janet Fletcher

ROUND 14 - SATURDAY 26 JULY 2025

WINCHELSEA BLUES VS GEELONG WEST GIANTS.

Welcome to Blue's News to read the results of Round 14 where the Winchelsea Blues played host to the Geelong West Giant at Eastern Reserve. The weather forecast was for cold and wet conditions with little wind, and it was spot on. The Winchelsea area has missed a lot of the rain that has passed through the state but not last Saturday with water runs around the ground and carparks not seen for the last couple of years. The oval stood up well for the most part and now has 2 weeks to recover before the next home game.

RESERVES:

Winchelsea Blues 4.7.31 were defeated by Geelong West Giants 5.11 41

The Reserves were slow to get going in that first crucial quarter with the wet conditions that presented for both teams, Geelong West Giants clearly winning the first 25 minutes of footy going into the first break with a lead of 13 points. The second quarter saw the Blues lift but were inaccurate in front of goal kicking 5 points to West's 2 points.

After an impassioned plea from Coach Jarryd Messenger the home team came to life and kicked 2 goals straight to 1 goal 2 points from the opposition setting up the final quarter to be a tight affair to get over the line just 6 points in it. Winchelsea had a couple of chances in the last quarter but just couldn't capitalise in front of goal to get that winning score across the line. Injuries are still across a significant number of quality players for the Winchelsea Blues.

Finals are looming and it would be great to see the Winnie Blues Reserves play off in the Finals Series.

GOALS :

Declan Chibnal, Jude Cloverdale 1, Harry Irving 1, Noah Harvey 1.

BEST:

Alex Hackett, Fraser Amos, Callum Harrison, Nic Martignago, Jude Coverdale, Jack Milbourne

SENIORS:

Winchelsea Blues 8.14.62 defeated Geelong West Giants 6.7.43

The rain continued through the afternoon and was showing no sign of letting up by the time 2pm arrived for the Senior game.

Winchelsea's first half of footy was forgettable, going in at the main break 1 goal 6 points to West's 4 goals 5 points, the Blues couldn't buy a goal in the second quarter kicking 5 points and in the wet conditions the game was looking like how far Geelong West Giants.

There is a bit of "history" between these 2 sides and the Blues had lost to G.W.G. in Round 2 with some dubious tactics being allowed to continue by coaching and umpiring

alike at West Oval that round against some of our much younger side, and if you think some of our Winchelsea Blues supporters are bad, the second half of Round 2 found the G.W.G. reserves side being absolutely feral looking down from their beautiful new double storey facility. A memorable match for all the wrong reasons.

So, back to the second half of football in Round 14 – the Winchelsea Blues came out and stunned G.W.G. in that third quarter having all the play, marking cleanly and found their kicking boots with a score of 5 goals 6 points while keeping the opposition scoreless for the quarter. For the few supporters who braved the weather it was a great reward to see the turnaround from the Blues.

Whatever the coaching staff had said at half time clearly flicked a switch and there was plenty more on display in the last quarter. Again some dubious tactics were made by the opposition, but this time around the Blues stood up and went on to have a great win on their home turf. Exciting stuff Blues!

GOALS:

Cameron Primmer 2, Joshua Freeman 2, Tavae Sauni 1, Jack Sampi 1, Matthew Gillespie 1, Jack Symmonds 1.

BEST:

David Isbister, Caleb Brown, Indi Parish, Jordan Huff, Lachie Gemmill, Baxter Boddington.

This week the Winchelsea Blues travel to Anakie Reserve on Saturday the 2nd of August, to play the Anakie Roos who are travelling quite well this season. Games are at the usual times, it would be good to see a sea of Blue in the crowd and Committee along with Life Members attending the President's afternoon tea, Anakie always put on a great spread.

THE BLUE'S BISTRO:

Great to hear good feedback from last week's Chow Mein featured on the Menu, this week we have Apricot Chicken, Seafood Baskets and Rissoles.

Our Volunteers in the Blue's Bistro kitchen have been short staffed most of the season and a huge thank you to all those who have stepped up to help and keep the kitchen running every week. Scott Mawson and Ash Gemmill keep the Bar running smoothly (amongst other things) and again, they are fabulous Volunteers for the Winchelsea Football & Netball Club.

Thanks also to Tan Budge for her role in the Canteen this season, the Budge family name is a long time and respected name within the Winchelsea Blues and the family will part of the Club's 150th anniversary next year – 2026.

Next year will be a great chance to recognise the many previous Life Members and custodians of the Winchelsea Football (and now Netball) Club. There will be more on this in coming additions of the Star.

GO BLUES!!

Water Delivery



WAZZA'S
WATER CARTAGE

Stainless Tanker Up to 22,000 ltr loads
Barwon Water Registered

Domestic & Rural Water Supplies

Call Wazza
Mob: 0428 877 260
Email: wazza@wazzas.com.au Web: wazzaswater.com



5234 6585 0417 385 984
For all your domestic & stock water.
Also available for road and civil construction
Local owned and operated.

TIP TRUCK HIRE

- * **FRONTEND LOADER**
- 4 IN 1 BUCKET**
- * **DRIVEWAYS**
- LEVELLED OFF**
- * **RUBBISH REMOVAL**
- * **GRASS SLASHING**
- & RIDE ON**
- MOWER JOBS**

VINCE
0412 840 704

Knuckey's Winchelsea Ph: 5267 2011

Knuckey's have in stock a complete range of batteries to suit tractor, heavy machinery, cars, utes

The largest range of the best oil for your vehicles—**CASTROL**—
'when only the best will do'

The largest range of V belts.
A, B, C, D M Sections
Bolts and nuts for all occasions
Steel cut to size



SOUTHERN
GRAIN STORAGE PTY. LTD.

AG SUPPLIES FERTILISER GRAIN STORAGE SEED CLEANING
(03) 5267 2351

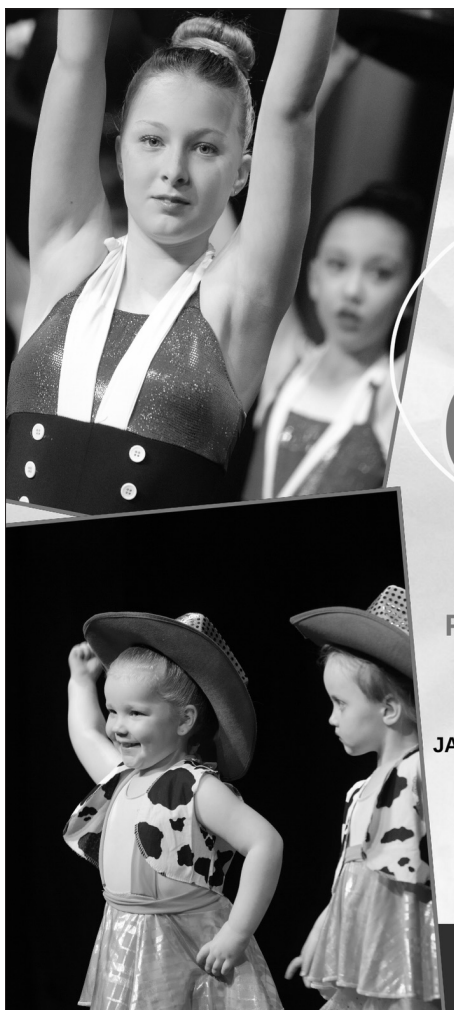
OZ TREES NURSERY & TREE PLANTING SERVICES

- Affordable seedlings—over 200 species
 - Complete plantation service—farm forestry, shelter, aesthetics
 - Deep ripping & mound ploughing. Rotary bed forming
 - Our experienced staff will help you select species for your site conditions and needs
- Also available—tree planting tools, milk cartons, plastic tree guards & bamboo stakes



569 Warrowie Rd. Colac
P: 5233 6280 F: 5233 6393
E: info@oztrees.com.au
W: www.oztrees.com.au
Open Monday—Friday
9am—4:30pm

Phone OzTrees for professional advice,



DANCE CLASSES

TAKING ENROLMENTS NOW
FOR OUR WINCHELSEA STUDIO

PRE-SCHOOLERS - ADULTS
CONTROLLED CLASS SIZES
JAZZ - THEATRICAL TAP - CLASSICAL BALLET
HIP-HOP - CONTEMPORARY DANCE

ENROL TODAY

WWW.MELSDANCECENTRAL.COM.AU



5234 6585 0417 385 984
For all your septic tank, grease traps
and interceptor pits servicing.
Locally owned and operated

52672192 **R & K Creative Framing**
for all your framing needs

free quotes
pension discount
specialist in Age &
Disability Modifications

Ray & Kim Jansen
10 Witcombe st
Winchelsea 3241
0414672192

Ray The Home
Maintenance HANDYMAN
abn 47928623462



Call Matt - 0418 319 357
mbwoodplumbing.au

Servicing Winchelsea & surrounds

- General maintenance & blocked drains
- Gas fitting & hot water service upgrades
- New homes & renovations



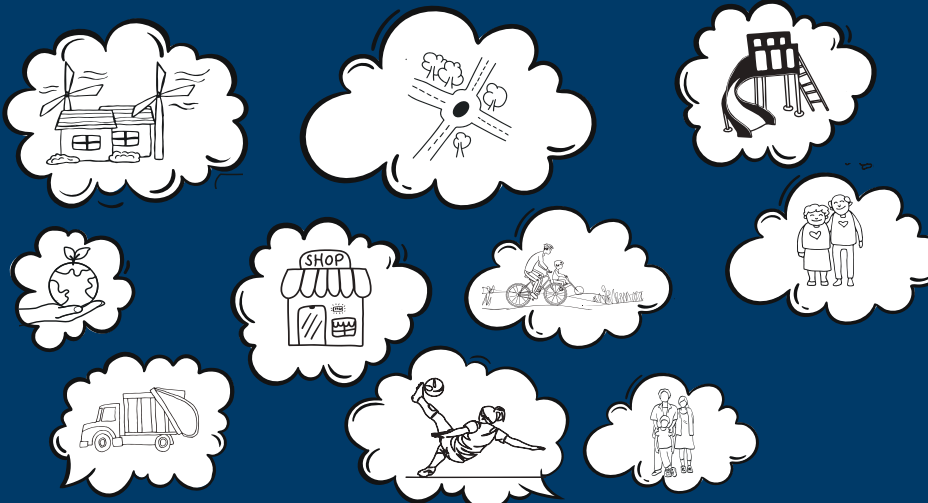
17 Alsop Drive

- ❑ LOG BOOK SERVICE
- ❑ AUTO ELECTRICAL
- ❑ TOWING
- ❑ AIR CONDITIONING
- ❑ CLUTCH & BRAKES
- ❑ TYRES
- ❑ WHEEL ALIGNMENT
- ❑ BATTERIES

CAR, TRUCK REPAIRS & Roadworthys

PH: 5267 3001

Mob: 0417 137 457



Have your say: Draft Council Plan 2025-2029

The draft Council Plan, incorporating the Health and Wellbeing Plan, sets out Surf Coast Shire Council's strategic direction for the next four years.

It has been informed by more than 1,000 community contributions and a community panel.

View the draft plan and provide feedback by 10 August

yoursay.surfcoast.vic.gov.au/OurFocusOurFuture.

Help shape where you live.



**OUR FOCUS
OUR FUTURE**





Green Lead Electrical
Connecting you to a greener future
REC 23618

0467 097 101



Servicing Geelong & the Surf Coast

Specialising in all residential electrical work including:

- Switch board & lighting upgrades
- Outdoor lighting
- Electrical safety checks
- Energy efficient LED lighting
- Ceiling sweep fans & ventilation
- Energy saving advice

Phone Martin Wilkinson:

0467 097 101

greenlead@outlook.com

1132268-CG18-14

Hesse Rural Health provide face-to-face, telehealth, and home visit options to support individuals dealing with a range of issues, offering a confidential space where you can explore your feelings and concerns



FREE

COUNSELLING SERVICES

● Relationships

● Anxiety

● Stress

● Life transitions

● Grief and Loss

● Depression

● Anger

● Caring for others

● Uncertainty

● Family Violence

● Parenting

● Life decisions

Call our phone number listed below; or email jdevonport@hesse.vic.gov.au to make an appointment at Beeac, Rokewood, Winchelsea, Bannockburn, or in your own home.

For immediate crisis support:

- Lifeline: 13 11 14
- Suicide Call Back Service: 1300 659 467
- Family Violence Support: 1800 737 732

Contact Us



Phone Number:
(03) 5267 1200



Website:
hesseruralhealth.com.au

DIGITAL ANTENNAS SALES & INSTALLATIONS

Hi-Gain Antennas P/L

1/21 Leather St, Breakwater

PH: 5222 2711

Manufactured by us in Geelong
Mon - Fri 7.30am - 4.30pm



parkrun 73



Saturday 26 July 2025 8am

Trebeck Reserve, Winchelsea

Thirty four parkrunners walked or ran the course through Trebeck Reserve this week. We had visitors from Oxford UK, Portarlington and Ocean Grove. One person completed their very first parkrun and four people recorded their personal best time for Trebeck Reserve parkrun. Congratulations to Nicholas Phelps, Greg Robinson, Sean Logan and, Mark Hubbert,.

This event was made possible by the following volunteers: Neil McInnes, Liz Bennett, David Woodall, Helen Woodall, Donna Loone, Don Smith and Kate McInnes

Full details of this week's results can be found at trebeckreserveparkrun.com.au/results or check out our Facebook page for more photos.

If you wish to join us any Saturday morning as a walker, runner or volunteer please complete the simple online registration at parkrun.com.au/register, this is free, only needs to be done once and can be used at any of the 5,000 plus parkrun events worldwide.

Well behaved dogs on a short hand held leash are welcome.

Thanks to Café La Hoot for hosting our post event coffee / breakfast.



KINDLING

Winter is almost upon us
It's time to stock up on kindling
to keep that fire going

Large bags for only \$7
PICK UP or DELIVERY

Contact the Men's Shed
0407839139
or call in at 51 Hesse Street



WANT TO JOIN PROBUS?

Enjoy fellowship with
other members
Enjoy trips & outings
Listen to guest speakers



Contact Lorraine
0417 467 927



For all your livestock, rural real estate and property management needs, speak to the Charles Stewart team

Livestock

Peter McConachy 0408 522 878
 Jamie McConachy 0418 522 879
 Matthew Nelson 0428 315 400
 Gerard Bohan 0400 005 541
 Dougal McIntyre 0439 575 612

Real Estate

Michael Stewart 0418 520 467
 Peter McConachy 0408 522 878
 Andrew Rice 0457 105 500
 Josh Lamanna 0417 586 032
 Daryl Osborne 0419 388 341
 Anthony McDonald 0418 593 597

Property Management - 5231 5011

Sarah Higgs Nathan Gray Daniella De Rooy



15 Murrell Street, Winchelsea 5231 5400



eldersrealestate.com.au

Elders

You're in Safe Hands With Peter Lindeman Delivering Exceptional Results for Over 20 Years

If you're thinking of selling a Rural or Lifestyle acreage property on the Bellarine, the Greater Geelong region or beyond then think Peter Lindeman.

Peter spent 20 years managing farms before jumping the fence to sell them; and over the last 23 years he's helped over 350 vendors achieve extraordinary results, more often than not surpassing their expectations. Why not let Peter show you how he can help you achieve an outstanding result for your property.

Peter Lindeman - 0418 525 609

RURAL AND LIFESTYLE SALES MANAGER - ELDERS GEELONG

E: peter.lindeman@elders.com.au



0400 643 976

- All general Plumbing and Gasfitting • Water tanks and Pumps
- Renovations and Extensions • Hot water and Heat pump
- Split system and Wood heaters • Roof and Gutter
- Septic and Treatment plants • Excavation, Bobcat and Tipper
- Driveways and Earthworks
- Blocked drains and CCTV Inspection

Simon McGillivray

Lic: 109610 Free Quotes, Fast & Friendly Service

NATURAL GAS CONNECTIONS

**M. & L DRAYTON
 PLUMBING SERVICES**

YOUR LOCAL LICENSED

- PLUMBERS (24356)
- GAS FITTERS
- GAS CONVERTERS
- CARBON MONOXIDE TESTING

MARK 0428 520 142





Quick Response Grants NOW OPEN!

Grants of up to \$3,000 for equipment and community led projects

To apply: surfcoast.vic.gov.au/Grants

surfcoast.vic.gov.au



Wightons Lawyers

Dispute Resolution & Litigation
Debt Collection
Property Law
Wills & Estates
Powers of Attorney
Business Law
Family Law
By appointment only

22 Willis Street, Winchelsea
ph. 5221 8777

www.wightons.com.au



Located at 36 Main Street, Winchelsea 3241

For any enquires or bookings please contact the clinic on 5292 8028.
Or visit our website: www.winchmc.com.au

Opening Hours:

Monday - Friday 8:00am - 5:00pm
(Monday Evening Clinics available and selected Saturdays)



Our clinic accepts online bookings via the app called HotDoc.
Download the app on the App Store or Google Play or head to our website.



Caring for families since 1883

Every detail matters...

Tuckers
Funeral & Bereavement Service
... for a life worth celebrating

AFDA Member
PH: 5221 4788

www.tuckers.com.au





Life's busy. Let us help you.

Contact us today

We can help you with:

- Buying your first or next family home
- Saving for your first home
- Residential Investment Lending
- Refinancing from your current lender
- Home loan reviews
- Pre-approvals

With extensive banking experience and financial expertise, we'll help bring your financial goals to life.



Ebony Berg
0400 784 249



Josie Kavenagh
0409 564 192



Community Bank
Winchelsea and District

PAPER RECYCLING

**Paper depot rear of
Senior Citizens
Rooms
Harding Street
NEWSPAPERS
MAGAZINES
PHONE BOOKS**



**All money raised used
for local community**

4224 0226



WINCHELSEA LIONS CLUB 022559
30 Members

Last financial year contributed
4000 hours of time and effort
which generated in excess of
\$24,000 to support local community,
national and international projects

**COME AND JOIN
WINCHELSEA LIONS**
winchelsea.vic@lions.org.au
(03) 4224 0226

Contact us today and a Lions
member will be in touch to wel-
come you to the Club.

A family business operating for more
than 138 years, HF Richardson services an
extensive client base throughout the greater
Winchelsea area. Our success is built on
a long history of innovation and while we've
moved with the times, our basic values of
honesty, trust and integrity have remained.



Eric Foster
0429 499 924
Sales Executive



Ken McDonald
0418 524 150
Licensed Estate Agent

**Residential | Rural Lifestyle
Agricultural Farms**

HF RICHARDSON
PROPERTY

www.hfrichardson.com.au

PAPER LOGS & ROLLS

**No Chainsaw Needed
Made By Recycled Paper
Environmentally Friendly
Ash Good For Garden**



**1 Roll
\$2
Pack of 4 Logs
\$5**

By using paper logs you save trees



**Contact Alan
0476 475 422**

All money raised used for local community





Winchelsea Football Netball Club Inc

Hopkins St, Winchelsea winchelseafnc@hotmail.com

Junior Netball

Shae Callahan

Under 11s report

Tuesdays game was a tough one for the girls, ending the first quarter with 1-1 we knew this was going to be a close game, Leopold were a strong team that tested our girls. However they persisted and took what we have been learning at training with our systems, strong passes and rebounding to come out with a win!

Ending the night 6-1, the girls were pretty pleased with themselves, coming off the court saying it was a difficult game and they knew where they could improve! Ivy and Helena definitely stood out with many intercepts and chased balls and all around pressure on the court!



Rising Stars Netball program is where to learn the basic skills

By Shae Callahan

Winch Rising Stars Netball Program

For Ages 8–10 | Confidence, Skills, and Game Readiness

The Winch Rising Stars program is where our next generation of netball talent takes flight! Designed for players aged 8–10, this exciting program builds on the basics learned in NetSetGo and prepares players for competitive play with fun, structured, and engaging training.

Over the term, our Rising Stars will focus on:

- Ball skills & movement drills
- Court positioning & game rules
- Confidence in match play
- Teamwork & communication
- Real game simulations

Led by passionate coaches and supported by our club community, Winch Rising Stars is more than training — it's about helping young players shine on and off the court.

Because every champion starts as a Rising Star!

The next generation of Blues ready to make us proud!



Our U10 Minis took to the court for the first time on Monday night. While the scoreboard didn't go our way, the girls were all smiles, full of joy just being out on the court, showing off the teamwork and skills they've been learning through the NetSetGo program.

It was fantastic to see such a big crowd on the sidelines, with so much support from our community — plenty of cheers and encouragement helped make it a really special night for the team. An incredible effort from the whole group — well done, girls! GO BLUES!

We'd love to welcome a few more players. If you know a future little netball star, send them our way!

WINCH RISING STARS NETBALL PROGRAM



FOR AGES 8-10

Confidence, Skills, and Game Readiness

- 🏐 Ball skills & movement drills
- 🏐 Game positioning team
- 🏐 Teamwork & court play
- 🏐 Real game simulations

Led by passionate coaches and supported by our club community.

Because every champion starts as a Rising Star!





Water Supply
Specialists

WATER SOLUTIONS

74 Dennis Street, Colac
5231 1861



ALL THINGS WATER:

• PUMPS • PIPES
• FITTINGS • TANKS
• POOL CHEMICALS
• IRRIGATION
• WATER PURIFICATION
• SOLAR • REPAIR

Winchelsea
Star

ISSN 2202-6851



9 772202 685002

R.A.K. DAVIS
& SONS

**CARTAGE
CONTRACTORS**

WINCHELSEA

SUPPLIER OF ALL QUARRY MATERIALS, TRUCK HIRE

CARTAGE OF GRAIN, LIME, GYPSUM & SUPER

LANDSCAPE & GARDEN SUPPLIES

56 WILLIS ST, WINCHELSEA

Ph – 5267 2094

Ryan – 0438 672 281

email: rakdavissons@gmail.com

AlfordBuilt

*New Homes, Renovations, Extensions,
Bathrooms, Decks & Pergolas*



0408 583 362



stephen@alfordbuilt.com.au



REGISTERED
Building Practitioner

DEFIBRILLATORS IN WINCHELSEA

Accessible to the public
24 hours a day



The Winchelsea Lions Club has compiled a list of public access defibrillators in Winchelsea. If anyone knows any others with 24 hour public access, please let Linda Carter know 0439 817 263.

Ambulance Victoria
33 Willis Street

Bendigo Bank
11 Main Street

Globe Theatre (Side entrance)
17 Willis Street

Hesse Rural Health
8 Gosney Street

Men's Shed
51 Hesse Street

Netball Courts
Eastern Reserve Hopkins St

Senior Citizens Club
36 Harding Street

Uniting Church
33 Hesse Street

Winchelsea Bowls Club
Hesse St,

Winchelsea Cemetery
McConachy St

Winchelsea Golf Club
13 Anderson Street

Winchelsea Primary School
Main Street

Wurdale Memorial Hall
220 Wurdale Road

