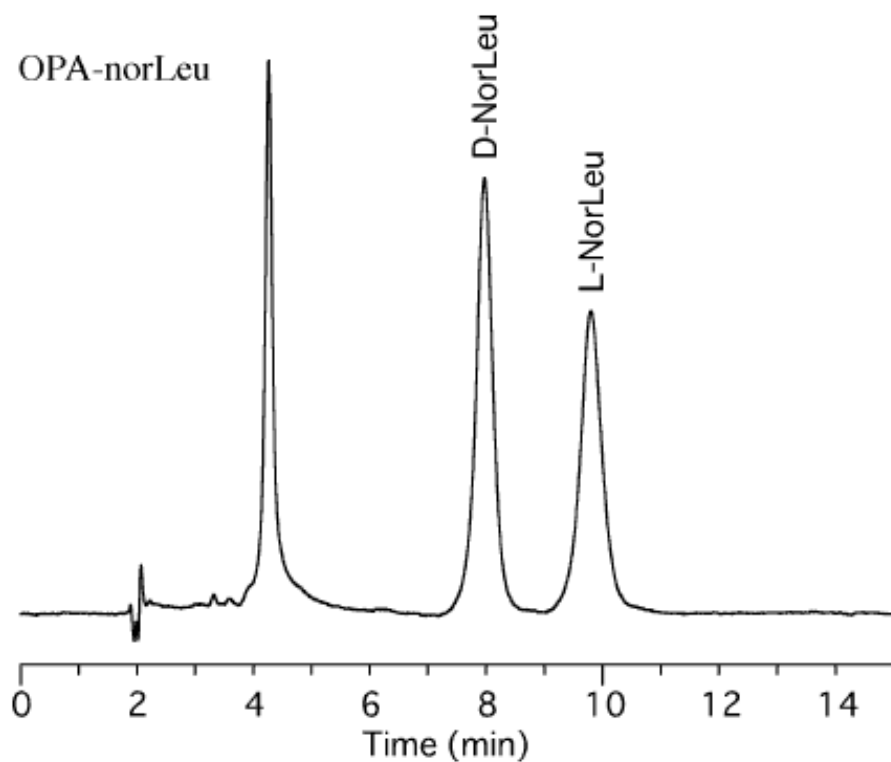


## Analysis of OPA-Norleucine (norLeu)

Data No. LA381-0000



Column : Bioptic AV-1  
5µm  
150 × 4.6 mmI.D.

Solutes : 1. OPA-D-norLeu  
2. OPA-L-norLeu

Column Cat. No. : 5020-02511

Eluent : Methanol /50mM phosphate buffer (pH6.6) = 8 / 92 (w / w)

Flow rate : 1.0 mL/min.

Col. Temp. : 40°C

Detection : UV 340nm

Injection Vol. : 5µL

Sample : 10uL Amino acid sol.(10mg/mL 50%MeOH)+ 40uL  
OPA sol.  
L 2-mercaptoethanol in 10mL borate buffer  
pH9.2)mixing