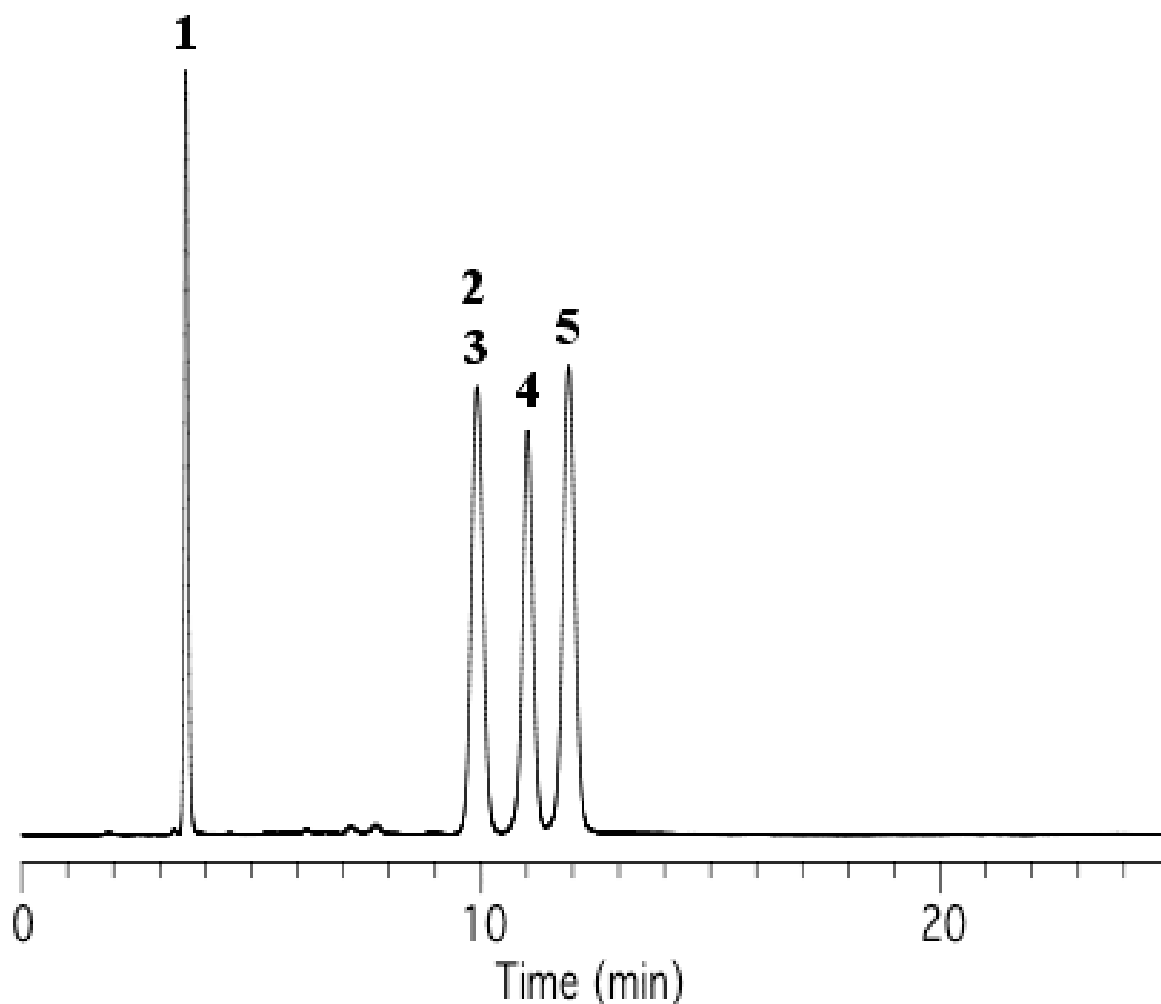


InertSearch™ for LC

Inertsil® Applications

Analysis of Steroid Hormones

Data No. LA252-0000



Column :Inertsil SIL-100A
5 µm
150 x 4.6 mm I.D.

Column Cat. No. : 5020-01711

Eluent :A) n-Hexane
B) Ethanol
A/B = 85/15, w/w

Flow rate :1.0 mL/min.

Col. Temp. :40°C

Detection :UV 254 nm

Injection Vol. :

Sample :

Solutes : 1. Progesterone
2. Corticosterone
3. Cortisone
4. Prednisone
5. Prednisolone