

PLAY GUIDE

Find Your Fun!



PEKIN PARK DISTRICT



Visit us at pekinparkdistrict.org





when you're up at night,
so are we

Peoria's only 24-hour emergency room specially designed for children and families.

- A child friendly atmosphere, including a separate entrance and waiting room for children and families, to keep kids as calm and comfortable as possible
- Nurses and doctors specially trained to treat sick and injured children
- Open 24 hours a day, 365 days a year, with a separate entrance to the right of the OSF Saint Francis Medical Center emergency room

Get a sneak peek before you need us at osfchildrenshospital.org/ER



Always call 9-1-1 in case of an emergency.



PEKIN PARK DISTRICT ADMINISTRATION

BOARD OF COMMISSIONERS

Greg Ranney, President
granney@pekinparkdistrict.org

Kristen Walraven, Vice President
kwalraven@pekinparkdistrict.org

Gary Gillis, Commissioner
ggillis@pekinparkdistrict.org

Kyle Cain, Commissioner
kcain@pekinparkdistrict.org

Sue McMillan, Commissioner
smcmillan@pekinparkdistrict.org

Mike Dralle, Commissioner
mdralle@pekinparkdistrict.org

Steve Sours, Commissioner
ssours@pekinparkdistrict.org

EXECUTIVE DIRECTOR

Cameron Bettin
cbettin@pekinparkdistrict.org



SUE MCMILLAN, KYLE CAIN, STEVE SOURS, GREG RANNEY, GARY GILLIS, KRISTEN WALRAVEN, MIKE DRALLE

TABLE OF CONTENTS

Facilities & Contact Info	4
Community Highlights	5
Pekin Park Foundation	6
Financial Assistance For Program Registration	7
Experience The Best Of Tennis & Pickleball	8
Submit Your Pekin Park Photos.....	9
Something For The Whole Family	10
Field Trips	12
Day Camp Adventures	13
Parkside Fitness	14
Golf	17
Sand Volleyball Tournament	18
IRVSRP (special needs).....	19
Veterans Memorial Arena.....	20
Tumble, Dance, and Cheer.....	22
Blazin' A Trail Riding & Boarding.....	24
Birthday Parties	25
Miller Center	26
Rental Facilities	30
Questions	31
Parks, Facilities, Amenities Matrix	32

Please go to pekinparkdistrict.org for the most up-to-date program offerings.

FACILITIES AND CONTACT INFORMATION

PARKS

Blenkiron Park

601 Park Ave.
Pekin, IL 61554

Coal Miners' Park

300 S. Parkway Dr.
Pekin, IL 61554

Independence Park

612 Lasalle Blvd.
Marquette Heights, IL 61554

James Field

101 S. 9th St.
Pekin, IL 61554

John T. McNaughton Park

217 McNaughton Park Rd.
Pekin, IL 61554

Kiwanis Park South

On the Corner of Ninth & Koch St.
Pekin, IL 6554

Miller Park

121 Court St.
Pekin, IL 61554

Mineral Springs Park & Lagoon

1701 Court St.
Pekin, IL 61554

Railsplitter's Park

268 Derby St.
Pekin, IL 61554

Riverfront Park

121 Court St.
Pekin, IL 61554

Rotary Park

1115 State St.
Pekin, IL 61554

Southside Business

Association Park

200 Sapp St.
Pekin, IL 61554

Sports Complex

300 Koch St.
Pekin, IL 61554

Tante Park

Broadway Rd.
Pekin, IL 61554

Willow Park

500 Willow St.
Pekin, IL 61554

GOLF COURSES

Lick Creek Golf Course

2210 N. Parkway Dr.
Pekin, IL 61554
Phone: (309) 346-0077
Fax: (309) 347-1262

Parkview Golf Course

2300 Broadway St.
Pekin, IL 61554
Phone: (309) 346-8494
Fax: (309) 346-6016

FUN & GAMES

Boating on the Lagoon

Phone: (309) 347-7275

DragonLand Water Park

193 Red Bud Memorial Dr.
Pekin, IL 61554
Phone: (309) 347-4000

Parkside Fitness

300 Red Bud Dr.
Pekin, IL 61554
Phone: (309) 347-6644
Fax: (309) 347-4472

Magic Dragon Mini Golf

210 Recreation Dr.
Pekin, IL 61554
Phone: (309) 353-1244

Pekin Archers, Inc.

2510 Edgewater Dr.
Pekin, IL 61554
Email: dannyterrell@gmail.com

Blazin' A Trail Riding & Boarding

217 McNaughton Park Rd.
Pekin, IL 61554
Phone: (309) 382-1268

COMMUNITY CENTERS

IRVSRA Recreational Center

1715 Dragon Dr., Suite B
Pekin, IL 61554
Phone: (309) 201-4005
Email: info@irvsra.org

Miller Center

551 S. 14th St.
Pekin, IL 61554
Phone: (309) 346-5210
Email: millercenter@pekinparkdistrict.org

Pavilion on the Lagoon

257 Pavilion Rd.
Pekin, IL 61554
Phone: (309) 201-4008
Email: rentals@pekinparkdistrict.org

ADMINISTRATIVE OFFICES

Recreation Department

Veterans Memorial Arena
250 Redbud Memorial Dr.
Pekin, IL 61554
Phone: (309) 347-7275

Robert N. Blackwell

Administration Building

1715 Dragon Dr., Suite A
Pekin, IL 61554
Phone: (309) 353-5330
Fax: (309) 353-1787

EMERGENCY NUMBERS

Park Police

Phone: (309) 346-3132

Inclement Weather Line

Phone: (309) 226-4060
rainoutline.com/search/dnis/3092264060



COMMUNITY HIGHLIGHTS



MARIGOLD FESTIVAL

September 7-10 is Pekin Marigold Festival, right here in Mineral Springs Park! The festival is celebrating it's 51st year with 'Marigolds On The Menu'. The Medallion Hunt starts on August 28 at 12:00 pm. For more information about the festival like parade times, carnival times, chalk walk, and more; visit: pekinchamber.com/pekin-marigold-festival/

MARIGOLDEN BREAKFAST

Stop in at the Miller Center, 551 S. 14th Street in Pekin, across from the Lagoon, between 8:00 a.m. & 10:00 a.m., on Sunday, September 10, 2023 for a breakfast fundraiser to support TCRC and Miller Center programs. The cost is \$6.00 a plate and includes pancakes, sausage, and coffee or juice.



LICK CREEK INVITATIONAL

You are invited to participate in the 16th Annual Lick Creek Invitational, a two-man scramble, match play tournament. Each flight will consist of eight teams. Entry forms are available at both Lick Creek and Parkview Golf Courses. More details can be found on page 17.

Event Dates: September 8 - 10, 2023

SAND VOLLEYBALL TOURNAMENT

Pekin Park District's annual sand volleyball tournament fundraiser, benefiting IRVSRA.ORG, is back this fall in Mineral Springs Park. Play for cash in the 4v4 Co-Ed Competitive Division or for trophies in the 6v6 Co-Ed Recreation Division. Details to register your team and players can be found on page 18.

Event Dates: September 23, 2023

WINTER WONDERLAND

No Grinch can stop the Christmas Spirit from entering our community! Come out to Mineral Springs Park on Sunday, November 26, 2023. There will be a parade, fireworks, and several other yet to be determined family friendly offerings. For more information about the events, entering the parade, or sponsoring a tree, visit: www.pekinwinterwonderland.info, or call the Pekin Park District Rec. Office at (309) 347-7275.



PUBLIC SKATE SESSIONS

Be on the lookout for the start of public skate sessions to begin at Veterans Memorial Arena sometime in early September. We will update the season schedule monthly on our website, and occasionally on Facebook & Instagram.

Public Skate Calendar: <https://shorturl.at/ciquZ>

PEKIN PARK FOUNDATION



The Pekin Park Foundation is a 501(c)(3) not for profit charitable organization. Its mission is to provide a means by which park supporters can help improve and beautify our parks and expand participation in activities and programs through a well-funded Gift Program and long-term sustaining Endowment Program. By having this funding mechanism in place to meet future needs and enhancements, the park will continue to serve as the cherished community icon that it has become. It also provides a means to leave a lasting legacy to be enjoyed by future generations of park users.

THE PEKIN PARK FOUNDATION:

Provides funding and acquisition assistance and in-kind donations for purchasing, developing, promoting and maintaining parks, land, buildings, facilities, equipment, supplies, activities and programs for the Pekin Park District.

Promotes programs that serve the purposes and objectives of the Foundation, including endowment, gifting, sponsorship and volunteerism.

Promotes other activities and developments for the benefit of the Pekin Park District.

Compliments and enhances, and does not conflict with the activities of the Pekin Park District, a unit of

local government. Maintains a close working relationship with the Pekin Park District so as not to in any way diminish the power and authority of the Pekin Park District in performing its mission of working with the community to preserve and enhance recreational opportunities, open space resources and wildlife protection.

Engages in other activities related to the Foundation's specific objectives and purposes.

HOW YOU CAN HELP:

Various gifting opportunities can provide maintenance, scholarships, enhancements, improvements, recognitions, and memorials. The Pekin Park Foundation will assure your anonymity in your gift or bequest, or publicly recognize you or your family if desired. Gifts to the Foundation are tax deductible.

For additional information, contact Cameron Bettin at (309) 353-4328 or cbettin@pekinparkdistrict.org or visit www.pekinparkfoundation.org/donate to view the various ways you can support the Pekin Park Foundation.



TERRI GAMBETTI SCHOLARSHIP FUND



Financial Assistance Available For Program Registration

- Financial assistance towards registration fees
- Provides equal access to Park District programming regardless of ability to pay
- Free Application Process
- Recreation benefits everyone's physical, social, & mental health

Contact

-  (309) 347-7275
-  @ppdrecreation
-  recreation@pekinparkdistrict.org
-  www.pekinparkdistrict.org/scholarships

Taking time for recreation is important to everyone's health physically, socially, and mentally. The Pekin Park District recognizes this and understands financial assistance may be required for some individuals to participate in Park District programs. To provide equal access to Park District programs regardless of ability to pay, The Terri Gambetti Scholarship Fund has been established by the Pekin Park Foundation for qualified [Pekin residents](#) to ensure everyone can experience the healthy benefits of participation in recreation programs. Eligibility is based upon family size and income level. Awards are made without regard to race, religion, age, disability, or national origin. Scholarship application packets with all the eligibility guidelines and instructions can be picked up at the Recreation Office inside Veterans Memorial Arena, or downloaded from our website.



EXPERIENCE THE BEST OF TENNIS & PICKLEBALL @ PARKSIDE

Few venues in the central Illinois area features a 55,000 square foot facility home to four indoor tennis courts and eight indoor pickleball courts, each with a cushioned surface to help reduce the impact on players' joints. The facility also has five outdoor tennis courts (two are lighted) and ten outdoor pickleball courts (four are lighted), perfect for players who prefer to play outside in the fresh air. Additionally, three indoor racquetball/wallyball courts allow athletes to play those fast-paced games at any time of year. With on-site locker rooms, saunas, showers, a lounge, and concessions, we have everything you need to run a successful event.

NCAA & USTA

Parkside Fitness is a USTA organizational member and has a USAPA Pickleball Ambassador on staff. In addition, since 2021, the Bradley University Women's Tennis team calls the facility home during the portion of their indoor season for practices and NCAA Division I matches. Parkside Fitness also plays host to numerous USTA adult league matches throughout the year.

BENEFITS OF COURT SPORTS

One of the benefits of playing tennis or pickleball is that it's a great way to stay active and healthy. Both sports improve cardiovascular health, increase endurance, and build strength. Tennis and pickleball also help to improve coordination, balance, and flexibility, which are important aspects of overall fitness.

A RICH HISTORY

Tennis has a rich history, dating back to 12th century France. However, the modern game of tennis, as we know it today, was developed in England in the 19th century. Since then, tennis has become one of the most popular sports in the world, with millions of people playing it at all levels of competition. Tennis is played in Grand Slam tournaments, such as Wimbledon and the US Open, attracting thousands of fans yearly.

On the other hand, pickleball is a relatively new sport, with its origins dating back to the mid-1960s. Pickleball was invented in 1965 by three dads in Washington State who were looking for a fun activity for their families. It proved to be a fun and easy-to-learn activity they could play together. The sport quickly caught on, and today it is played by millions worldwide.

In recent years, pickleball has become increasingly popular nationwide, and Pekin is no exception. The sport is easy to learn and can be played by people of all ages and skill levels, making it an excellent option for families and groups of friends. One of

the reasons for its growing popularity is that pickleball is a low-impact sport, which means it's easier on the joints than many other activities. As a result, pickleball is a great way for seniors to stay active and healthy.

INTERESTED IN TENNIS OR PICKLEBALL?

There are a few options if you are interested in playing tennis or pickleball at Parkside Fitness. The facility offers both drop-in play and organized leagues and tournaments. Drop-in space is open for both tennis and pickleball, and it's a great way to meet new people and improve your skills. Drop-in play is available to members and non-members.

For those interested in more competitive play, Parkside Fitness offers a variety of tennis and pickleball leagues and tournaments. These events are open to players of all ages and skill levels and are a great way to test your abilities against other players. The fees for these events vary depending on the type of event.



YOU CAN RENT PARKSIDE COURTS

If you're interested in renting the facility at Parkside Fitness for a tournament or event, the facility offers a variety of options to fit your needs. The indoor and outdoor tennis and pickleball courts and the indoor racquetball/wallyball courts can be rented.

Whether you're a seasoned player or just starting, Parkside Fitness is the perfect place to enjoy the sports of tennis and pickleball. With state-of-the-art facilities, professional coaching, and a vibrant community of players, this fitness center is a paradise for tennis and pickleball enthusiasts. So why not come down and see for yourself?

Contact Parkside Fitness today at (309) 347-6644 or email them at kknnox@pekinparkdistrict.org to inquire about renting the facility or hosting a tournament. You won't be disappointed!



**PARKSIDE
FITNESS**
Pekin Park District

SUBMIT YOUR PEKIN PARK PHOTOS

EASILY UPLOAD ONLINE

SCAN QR CODE WITH YOUR CAMERA APP



AMY W.



SARA V.



SHIRRELL W.

WE WANT YOUR PHOTO IN THE NEXT PEKIN PARK PLAY GUIDE

Have you taken an amazing photo of yourself or a family member at one of Pekin Park District's many parks, facilities, or programs? Perhaps you snapped a unique perspective during a community event, recorded a precious moment full of smiles, documented park wildlife, or captured a landscape image highlighting the seasonal beauty. Great! We would love to showcase your photo in our next Pekin Park Play Guide, website announcement, or social media post! We are accepting photos of all kinds linked to Pekin Park District in some way. Upload your submissions using the QR Code at the top of the page or by visiting: <https://am.lol/p/BgSOnIU>



CARLY S.



LINDSAY D.

SOMETHING FOR THE WHOLE FAMILY

BREAKFAST WITH SANTA

Come enjoy a delicious breakfast of pancakes and sausage cooked up by some of the best elves the North Pole has to offer. Santa will be there to hear all of your wish lists and stories. Make a craft to take home and share with your family.

Date: Saturday, December 2, 2023

Location: Miller Center

Time: 8:30 – 10 a.m.

Cost: \$6 per person for breakfast



LETTERS TO SANTA

We have contacted Santa Claus himself and he will write a letter to any child that signs up.



To sign up, simply stop in the Recreation Office or sign up online at pekinparkdistrict.org, fill out the form, and email to Andrew Richey or send it back to us in the mail. Santa's elves will take care of the rest!

Deadline to turn in your form: 5 p.m. December 8, 2023

Cost: \$5 per child

EASTER EGG HUNT & BUNNY BREAKFAST

The Easter Bunny and his friends are cooking a wonderful breakfast of pancakes and sausage for you to enjoy. The Easter Bunny will be visiting with everyone and getting pictures so make sure to bring your cameras.

Date: Saturday, March 23, 2024

Location: Pavilion on the Lagoon - Mineral Springs Park

Time: 8:30 – 10 a.m.

Cost: \$6 per person for breakfast

Easter Egg Hunt – **FREE**

8:45 a.m. | 3 and under

9:15 a.m. | 4-7-year-olds

9:45 a.m. | 8-11-Year-Olds



Contact Andrew Richey for more information
arichey@pekinparkdistrict.org | (309) 201-4006

VIP DANCE

Calling all princesses and pirates! Bring out your Very Important Person to enjoy a night of dancing, food, crafts, and making memories. This event is open to boys and girls who want to have a special date night with an important adult in their life. Come dressed in your best to fit the theme and enjoy the night.



Princess & Pirate Dance

Theme: Princesses, Princes, Pirates, & Scallywags

Date: Saturday, February 10, 2024

Location: Miller Center

Time: 5:30 – 8 p.m.

Cost: \$30 per couple, \$10 per additional child (ages 4+)

ROTTEN EASTER EGG HUNT

ADULTS, this one is for you! Come out and find some Easter Eggs hidden on the Golf Course. These eggs have been hidden for a while so they may be a little "rotten", BUT the good news is that the really "rotten" ones contain adult beverage tickets! Some eggs even have gift certificates to local restaurants. Last year was great fun, so come on out for this enjoyable evening.

Date: Friday, April 5, 2024

Location: Parkview Golf Course

Time: 5:30 p.m.

Cost: \$30 per person





SWIM LESSONS @ PEKIN COMMUNITY HIGH SCHOOL

Come join us for year round swimming opportunities! Partnering with the High School we are able to offer swimming lessons to you during the fall/winter seasons! Presented by the accredited Jeff Elis and Associates Swim Lesson program we aim to teach all the swimming basics, swimming strokes, breathing techniques, and have loads of fun too! Classes will be held at Pekin Community High School pool located through the Pillar entrance on Stadium Drive.

Classes are inclusive of all skill ranges and ages:

- Water Exploration and Safety : 6 month - 2 year
- Preschool I'm a Big Kid Now! : 3 - 5 years
- Beginner Stroke Readiness : 5 - 11 years
- Advanced Beginner Stroke Development : 6 - 12 years
- Intermediate Stroke Refinement : 6 -13 years
- Adult It's Never Too Late! : 15+ years

Sessions are 5-weeks long and include 5-classes at 30 minutes each.

Day: Mondays

Location: PCHS

Times: 6:00 p.m. – 6:30 p.m.
6:30 p.m. – 7:00 p.m.
7:00 p.m. – 7:30 p.m.

Cost: R: \$55/session NR: \$58/session

Session Dates:

Oct. 23rd - Nov. 20th
Nov. 27th - Dec. 18th (4-Week Session Price \$46/\$49)
Jan. 8th - Feb. 5th
Feb. 12th - Mar. 11th
March 18th - Apr. 15th

ILLINOIS DEPARTMENT OF NATURAL RESOURCES EDUCATIONAL BACKPACK LOANER PROGRAM

Pekin Park District is pleased to be a host site for an IDNR Field Trip Pack. The Backpack Loaner Program provides educators with a multitude of outstanding resources to help prepare students for exploration of nature. They are great for formal and non-formal educators to use. Teachers, youth

group leaders, scout leaders, home-schooling educators, preservice teacher instructors, librarians, nature-center personnel, museum staff, Ag in the Classroom staff, University of Illinois Extension staff and Soil and Water Conservation District staff are just some of the people who have borrowed and used the loaner program.



Suggested use is for students in Pre-K through 3rd grade. Please call the Pekin Park District Recreation Office at (309) 347-7275 between 11 a.m. and 8 p.m. Monday – Friday to reserve the use of this educational resource free of charge.

CREATIVE CREW ART CLUB

This art club provides artists ages 10 and up (yes, even adults) the opportunity to learn from our very own artist, Olivia Torrey. Each month we explore a different way to look at art to help participants find new ways to explore their creativity.

Creative Crew Art Club meets on a weekly basis. Drop in for one class or sign up for each monthly session.

Location: IRVSRA Rec. Center
Time: 7 p.m. – 8 p.m. Tuesdays
Cost: \$60 R/\$65 NR per month or \$15 R/\$18 NR (per class drop-in)



MONTHLY ART CLUB THEMES:

September: Acrylic Painting	January: Crafts
October: Mixed Media	February: Drawing
November: Water Color	March: Clay/Mosaic
December: (No Classes)	

CPR/First Aid Class

Completing just one class will give you an American Heart Association certificate accepted by most employers and daycare facilities. You will learn life-saving skills through Video and Hands-on based learning. Units covered will be Adult/Pediatric/Infant CPR and First Aid. Your instructor will also provide real-life scenarios to provide the best learning environment. Minimum class size is 4.

Location: IRVSRA Rec. Center
Times: 9 a.m. - 2 p.m.
Cost per class: \$55/person

Dates: September 30 October 21
November 18 January 22



FIELD TRIP ADVENTURES

ATTENTION EDUCATORS:

Pekin Park District offers field trips to McNaughton Park where students can discover the flora and fauna of the Illinois River Valley. In each workshop, park educators introduce key concepts tied to state learning goals and present lessons through discussion, storytelling, show and tell, walks in the woods, highly engaging games, and arts and craft activities. School field trip programs are available to public, private elementary and middle schools, and home-school groups of 10 or more students. Offered September through May.

Cost is \$5 per child.

AVAILABLE WORKSHOPS

Wild or Not? (Grades K – 2)

Participants will learn the differences between wild and domesticated animals, compare natural environments with man-made environments, and consider appropriate interactions between humans and wildlife.

Nature All Around (Grades K – 3)

Participants will learn that through careful observation and knowing what clues to look for, one can quickly discover a great diversity of living things. Using our senses, examining clues animals leave behind, and understanding the concept of “habitats” and what they provide will be presented through show and tell items, hiking, and hands-on activities.

Feasts, Famine, & Food Webs (Grades 4 – 7)

Examine the relationships between predators and prey, what happens when animal populations explode and crash, what makes animal food sources unstable, and the elements of an ideal balance in these interrelationships.

For further information or to register, contact Andrew Richey at arichey@pekinparkdistrict.org or call (309) 201-4006.

Field Trips may also be brought to your space for an additional fee.



Owl Pellet Discovery (Grades 4 – 8)

Who, who, whoo ever knew that the habits of owls could be learned in examining their pellets? In this workshop, students will have the opportunity to dismantle owl pellets to discover what surprises might be inside!



Pond Explorations (Grades 4 and up)

Water, water everywhere! Water is important for every living thing! During this program, we will look at the water cycle and talk about freshwater habitats and the creatures they support. Students will have hands-on activities that encourage them to learn about ponds and streams, and weather permitting, we will take a walk through the woods to one of McNaughton Park's streams (children may get dirty).



End of the Year Rewards Days (All ages)

Teachers, are you looking for a way to reward your students for their year of hard work? Rewards Day programs are three hours of activities such as a hike in the woods, team challenge games, nature art, mad scientist experiments, and simple survival skills. Pack a sack lunch.

DAY CAMP ADVENTURES

SCHOOL'S OUT DAYS (AGES K – 13)

When school is out, adventures are in with Pekin Park District! School's Out Adventure Days are one day activities held on "no school days" such as Columbus Day, MLK Jr. Day, Presidents Day, Staff Institute days, etc. Each adventure day will include a field trip (schedule and field trips subject to change). School's Out Adventure Days are open to Child Care Connection program members.

School's Out Adventure Dates:

October 9:	Bowling
October 26:	Ice Skating
October 27:	Movie
November 22:	Children's Discovery Museum
January 15:	Ice skating
February 19:	Bowling
**March 1:	Movie

Location: Veterans Memorial Arena

Cost: \$38 R/\$41 NR per day

**May be limited due staff availability



Questions?

Go to pekinparkdistrict.org for the most up-to-date information and schedule of adventures for the 2023-2024 school year or contact:

Andrew Richey, Program Manager

arichey@pekinparkdistrict.org | (309) 201-4006

WINTER CAMP - ARENA (AGES K – 13)

School's out for winter so come on out to camp for your winter break. Our trained counselors from summer will be all geared up for winter and ready to have some fun and make memories. We will do as much sledding and outdoor play as we can. Think SNOW! When we do have to stay inside we'll do dance parties, gym room time, crafts, sharing talents, games, and so much more. Breakfast is included daily.

Winter Adventures Camp Dates & Themes

SESSION 1: DECEMBER 22, 26-29

–Fun in the Snow - Ice Skating

SESSION 2: JANUARY 2 - 5

– Celebration Week - Movie

Location: Veterans Memorial Arena

Cost: Session 1: \$175R/\$190 NR

Session 2: \$165R/\$168 NR

Daily Drop-In: \$38 R/\$41 NR per day

SPRING BREAK - ARENA (AGES K – 13)

Spring break is a time to start enjoying the sun again and finding your fun in the park. Come out to camp to enjoy a fun week of games, crafts, friends, and memories. Fees include a field trip during the week, breakfast, trained staff, fun activities, and a daily snack.

MARCH 29 - APRIL 5

Location: Veterans Memorial Arena

Cost: Full 6-Day Session: \$210R/\$218 NR

5-Day Session: \$165R/\$168 NR

Daily Drop-In: \$38 R/\$41 NR per day

Child Care Connection Accepted for all Camps. You must contact Andrew at least 4 weeks prior to the start of camp to make sure we are set up with your account to accept Child Care Connection or any other grant programs.





PARKSIDE FITNESS

Parkside Fitness has everything Pekin families need to reach their health and fitness goals. If you're a beginner or an elite athlete, we have world-class solutions and trainers dedicated to helping you achieve the results you're looking for. Be our guest and discover our extensive equipment options, dynamic group fitness classes, adult and youth tennis programs, pickleball, racquetball, wallyball, personal and group training, plus a wide range of athletic programs for every fitness level and interest!

Parkside Fitness

300 Red Bud Dr.
Pekin, IL 61554
(309) 347-6644
parksidefitnesspekin.com

Hours

Monday – Thursday: 5 a.m. – 10 p.m.
Friday: 5 a.m. – 8 p.m.
Saturday: 6:30 a.m. – 8 p.m.
Sunday: 7:30 a.m. – 8 p.m.

Manager: Keith Knox

kknox@pekinparkdistrict.org or (309) 347-3278

Member Account Coordinator: Margaret Frazell

mfrazell@pekinparkdistrict.org or (309) 347-8601

Visit parksidefitnesspekin.com for information on all the classes and many fitness offerings available at Parkside Fitness!

GROUP FITNESS CLASSES

We offer a class for everyone – all included with your membership! We make fitness fun no matter your current level of fitness and work hard to motivate you to succeed. If you are not a member, you can still join in! Grab a punch card or pay to drop-in for any class. Check out parksidefitnesspekin.com for a class schedule.

PERSONAL TRAINING

ISSA Certified Personal Trainer, Nutrition Coach, and Fitness Coach, Jeremiah Miller is available to help build your body and bring you into the best shape of your life. Jeremiah is an EPN Supplement-sponsored athlete and is as equally passionate about helping you reach your fitness goals as you are. He loves to help people achieve their fitness goals and help them better themselves through nutrition and exercise. PT is available at additional session rates for both members and non-members.

PICKLEBALL

Join the Pickleball Revolution at Parkside Fitness! Pickleball is a racquet sport that combines elements of badminton, tennis and table tennis, and is played on an indoor or outdoor court that is approximately half the size of a tennis court.

Cost: FREE to members. Non-members: \$5/drop-in or \$45/punch card (10 visits).

Pickleball is offered:

Mon., Wed., & Fri.: 7 – 9 a.m., 9 – 11 a.m. and 1 – 3 p.m.

Tuesday & Thursday: 1 – 3 p.m.

Saturday: 7 – 9 a.m. and 9 – 11 a.m.

Sunday: 4 – 6 p.m.



NEW RATES
STARTING AT \$20/MONTH

MEMBERSHIP OPTIONS

• 4 STAR

Access to the entire facility. All group fitness classes are included as well as pickleball, racquetball, wallyball, use of the saunas and our entire free weight, functional training, and cardio equipment areas. Guest tennis court fees still apply to 4 Star Members.

Membership Type	Annual Agreement	Month-to-Month
Junior Fitness Pass (14-18)	N/A	\$20/mo
Junior (19-22)	N/A	\$23/mo
Individual (23-64)	\$25/mo	\$30/mo
Joint	\$50/mo	\$60/mo
Family of 3	\$75/mo	\$90/mo
Family of 4+	\$90/mo	\$105/mo
Senior (65+)	\$20/mo	\$25/mo
Senior Joint (both 65+)	\$40/mo	\$50/mo

• 5 STAR

Same access to the facility and group classes as the 4-Star Membership PLUS unlimited open tennis court usage.

Membership Type	Annual Agreement	Month-to-Month
Junior (14-22)	\$52/mo	\$65/mo
Young Adult (23-28)	\$62/mo	\$81/mo
Individual (29-64)	\$71/mo	\$97/mo
Joint	\$85/mo	\$117/mo
Family of 3	\$105/mo	\$136/mo
Family of 4+	\$113/mo	\$143/mo
Senior (65+)	\$57/mo	\$84/mo
Senior Joint (both 65+)	\$73/mo	\$110/mo

• CORPORATE & BUSINESS MEMBERSHIP PLANS

Same access to the facility and group classes as the 4-Star Membership. Guest tennis court fees still apply.

Membership Type	Annual Agreement	Month-to-Month
C&B Individual	\$20/mo	\$25/mo
C&B Joint	\$40/mo	\$50/mo
C&B Family of 3	\$60/mo	\$75/mo
C&B Family of 4+	\$72/mo	\$90/mo

ANNUAL FEES

Membership agreements require an annual \$35 fee. This fee renews each year in February for Annual Agreements. Month-to-Month Agreements pay the annual fee on the first full month which renews that same month annually. All membership agreement types are subject to the annual fee, with the exception of two: Junior Fitness Passes & Junior Memberships.

GUEST FEES & CHARGES

Group Fitness Punch Card: \$65/10 classes

Group Fitness Drop-In: \$8/class

Pickleball Punch Card: \$45/10 visits

Pickleball Drop-in: \$5/visit

Guest Fee: \$10/day

Tennis Court Fee: \$30/hour



Tennis

FALL/WINTER

CLINICS



DATES:

- Session 1:** September (M, TU, & TH: 4 p.m.)
- Session 2:** October (M: 5 p.m., TU, & TH: 4 p.m.)
No clinics October 31
- Session 3:** November (M, TU, & TH: 4 p.m.)
No clinics November 23
- Session 4:** December (M, TU, & TH: 3 p.m.)
No clinics December 25, 26, & 28
- Session 5:** January (M & TU: 4 p.m., TH: 3 p.m.)
No clinics January 1, 2, & 4
- Session 6:** February (M & TU: 4 p.m., TH: 5 p.m.)
- Session 7:** March (M, TU, & TH - 4 p.m.)
- Session 8:** April (M & TU: 5, TH - 4 p.m.)
- Session 9:** May (M: 3 p.m., TU: 4 p.m., TH: 5 p.m.)
No clinics May 27

FEES:

- 3-week rates | 1 hr. clinic: \$54 | 1.5 hr. clinic: \$81
 - 4-week rates | 1 hr. clinic: \$72 | 1.5 hr. clinic: \$108
 - 5-week rates | 1 hr. clinic: \$90 | 1.5 hr. clinic: \$135
- Members receive a 10% discount

Volley Kids (5 to 8-year-olds) | Tuesdays 5:30-6:30 p.m.

Clinic uses low-compression balls along with smaller racquets and nets. This age group also plays on 36' modified courts.

Rally Kids (9 to 10-year-olds) | Thursdays 5:30-6:30 p.m.

Clinic uses low compression balls along with smaller racquets and plays on the regular net. This age group also plays on 60' modified courts.

Junior High Smashers | Thursdays 6:30-8:00 p.m.

Clinic is for junior high students who are thinking about playing HS tennis or have taken limited lessons before.

High School Hot Shots | Mondays 5:30-7:00 p.m. | Tuesdays 6:30-8:00 p.m. (begins in November)

Clinic is for players who play JV tennis or play in the lower part of the lineup for their school.

High School Aces | Mondays 7:00-8:30 p.m. (begins in November)

Clinic is for varsity players who play in the top half of their line-up for their school or highly ranked juniors who have had tournament success.

Adult Skill Drills | Thursdays 7:00-8:30 p.m. (begins in November)

Clinic is for players with limited experience who can sustain short rallies. Instruction will be directed at stroke development and refining skills in point play. The clinic features drills that will get you moving for a great workout while playing points in a fun and competitive atmosphere.

GOLF

Lick Creek & Parkview Golf Courses

Pekin Park District Director of Golf – Cory Proehl, PGA
 cproehl@pekinparkdistrict.org | (309) 346-1969



GREEN FEES

WEEKDAYS	18 Holes	18 Holes	9 Holes	9 Holes
	Parkview GC	Lick Creek GC	Parkview GC	Lick Creek GC
Adult Resident	\$22	\$24	\$15	\$16
Adult Non-Resident	\$31	\$37	\$21	\$24
Senior Resident	\$21	\$23	\$14	\$15
Senior Non-Resident	\$27	\$32	\$19	\$22
Junior Resident	\$16	\$19	\$11	\$13
Junior Non-Resident	\$21	\$25	\$16	\$18

WEEKENDS & HOLIDAYS

WEEKENDS & HOLIDAYS	18 Holes	18 Holes	9 Holes	9 Holes
	Parkview GC	Lick Creek GC	Parkview GC	Lick Creek GC
Adult Resident	\$24	\$27	\$16	\$17
Adult Non-Resident	\$33	\$39	\$23	\$26
Junior Resident	\$17	\$20	\$12	\$14
Junior Non-Resident	\$22	\$26	\$17	\$19

GOLF CART FEES

All persons must be 16 years of age with a valid driver's license to operate a golf cart.

	Parkview GC	Lick Creek GC
18-Hole ½ Cart Fee	\$17	\$18
9-Hole ½ Cart Fee	\$10	\$11
2023 Golf Cart Pass	\$1,400 Unlimited Cart Fees at Both Courses	

For more details please contact:

Lick Creek Golf Course: (309) 346-0077
www.lickcreekgolfcourse.com

Parkview Golf Course: (309) 346-8494
www.parkviewgolfcourseil.com



THE 16TH ANNUAL

LICK CREEK

INVITATIONAL

You're invited to participate in the 16th Annual Lick Creek Invitational, a two-man scramble, match play tournament. There are eight teams per flight and entries are first come first serve – so get your entry in early!

Date: September 8 – 10, 2023

Entry deadline: September 2

Entry fees: \$260 per player

Entry forms are available at Lick Creek and Parkview Golf Course pro shops!



SAND VOLLEYBALL TOURNAMENT

Tournament Fundraiser benefiting special needs programming with Illinois River Valley Special Recreation Association (IRVSRA). Play for fun and trophies, play for money, play for a purpose.

Date: Saturday, September 23, 2023

Time: 8:00 a.m. - Elimination

Location: Mineral Springs Park Sand Volleyball Pits & DragonLand Water Park

Cost: \$30 per player

Two Divisions (max 12 teams per division)

Recreation – Co-Ed 6's (at least 2 women on the court at all times)

Competitive – Co-Ed 4's (at least 1 woman on the court at all times)

Format

Pool play & Single Elimination Tournament. Must be at least 13 years old with a guardian's signature.

Entry/Payment Deadline For T-Shirts & Goodie Bags

Sunday, September 10, 2023

How To Register

Team captain registers the entire team. Team entry must be paid by team captain prior to day of event.

Prizes

All players registered and paid before Sept. 10th will receive a T-shirt & goodie bag. One trophy will be awarded to the 1st, 2nd, and 3rd place recreation teams. Cash prizes will be awarded to the top four competitive teams: \$300** for 1st, \$200** for 2nd, \$100** for 3rd, and \$75 for 4th.

** Prize money based on 10 team entries. Prize money will increase or decrease based on entries.



In-House Registration:

Over the Phone or In Office

IRVSRA Rec. Center

1715 Dragon Drive

Pekin, IL 61554

(309) 201-4005

Open Mon-Fri

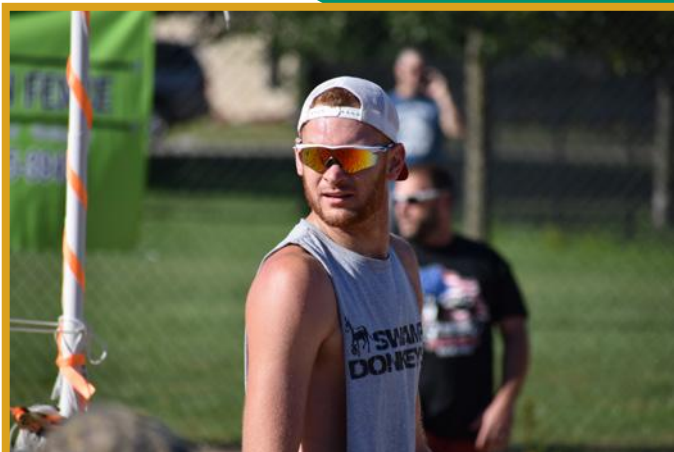
10 a.m. – 5 p.m.

Email: info@irvsra.org

Register Online:



rb.gy/w3ysed



ILLINOIS RIVER VALLEY SPECIAL RECREATION ASSOCIATION

IRVSRA.ORG

All Pekin Park activities and programs are open to individuals with special needs. We are pleased to comply with the Americans with Disabilities Act (ADA) regulations to make reasonable accommodations for participation, made on an individual basis. We provide reasonable accommodations to all participants, as needed. Pekin Park District must be notified 2 weeks prior to the individual's start date.

In addition to making any reasonable adaptive inclusions into all our Pekin Park activities, we offer additional special needs specific programs through our association with the Illinois River Valley Special Recreation Association (IRVSRA).

IRVSRA is a cooperative extension of Pekin and Fon du Lac Park Districts to provide recreational programs and leisure services for individuals with developmental disabilities. These integrated and specialized programs are available for both residents and nonresidents with special needs.

It is our pleasure to provide these athletic and social settings, through IRVSRA, to the special needs population within the Tazewell County area. IRVSRA publishes a seasonal brochure quarterly containing all their recreational programs and offerings. Some of the programs like Special Olympic Sports have age requirements while other programs like dances and parties are open to all age groups.

The IRVSRA Recreation Staff handles all IRVSRA registration, program and activity related questions. They are available to assist and advise participants, parents or caregivers to assure a comfortable, quality recreational experience. Stop by their office during business hours or visit irvsra.org anytime to connect and stay up to date.



IRVSRA.ORG specializes in:

- Special Olympic Team/Individual Sports
- Parties, Dances & Socials
- Live Shows & Movie outings
- Classes & Crafts
- Clubs & Service Projects
- Group Outings & Special Events
- Day camps for spring, summer, winter & holiday breaks

IRVSRA Contact Info:

IRVSRA Recreational Center
1715 Dragon Drive, Pekin, IL 61554
Office Hours: Monday – Friday | 10 a.m. – 5:00 p.m.
Call or Text: (309) 201-4005 | Fax: (309) 353-1787
Email: info@irvsra.org



VETERANS MEMORIAL ARENA



ICE SPORTS AND CLASS INFORMATION

PUBLIC SKATE

(Schedules updated monthly)

Our public skate sessions are great for family and friends to come have a good time on the ice together — and it may just get you excited enough to take part in our skating and hockey programs. (Skate rental is available at no additional charge.)

FREESTYLE SESSIONS

(Schedules updated monthly)

Freestyle sessions are for figure skating only. Figure skaters may work on moves-in-the-field, ice dancing, jumps, and spins. Skaters take turns playing their music as they are practicing their programs. There are higher level skaters on freestyle sessions that are moving fast and performing double and triple jumps, along with complicated footwork and dance patterns. It is important to look out for all other skaters. Due to the limited number of spots available, there are no refunds on admission fees paid online for missed sessions.



RAT HOCKEY

(Schedules updated monthly)

Rat Hockey (aka Pick-up or Open Hockey) is designated scrimmage ice time which is open to the public. Players sign up and split into teams on their own. There is no checking allowed. Players officiate themselves. Rat Hockey sessions are open to players of all skill levels and abilities in the appropriate age level for the session wishing to skate. Adult Rat Hockey is for players

ages 18 and over. Players ages 16 and 17 may also skate, but they must have a parent or guardian sign the waiver for that session.

STICK & PUCK

(Schedules updated monthly)

Stick and Puck sessions are an opportunity for hockey players of all ages to practice individual hockey skills such as skating, shooting, and passing.

Stick & Puck Requirements:

- Skaters who are under 17 years of age must wear full equipment.
- Players who are 18 and older must wear a helmet and gloves, at minimum.
- No organized practices or scrimmaging are permitted.
- All ages are permitted at every session.
- Share the ice and be mindful of others around you big and small.

PRECISE ICE TEAM

On the Precise Ice Team, skaters build strength, develop artistry on the ice, and learn choreography for performance and competitions. Participants must be at the Gamma level or higher and be registered for at least one Learn to Skate class per session.



Team practices begin August 28:

Mondays: 4 p.m.

Wednesdays: 4:15 p.m.

Saturdays: 8 a.m.

Cost: \$130 per session



LEARN TO SKATE

Learn to skate with the Pekin Park District! Ice skating lessons are a great way for all ages to learn new skills and have fun. Lessons are 45 minutes long. Rental skates are included in the session price, or you can bring your own. Lessons begin September 9 and are held on Mondays at 5 p.m. and 5:45 p.m. or Saturdays at 9 a.m.

Session cost: \$75 R/ \$78 NR

Level Descriptions

Tots (3-5 years): Preschool age skaters learn the fundamentals of skating to develop preliminary coordination and strength to maneuver on the ice. Skills include the correct way to fall, how to get up properly, skill-building games, basic movement on the ice, glides, dips, and swizzles.

Pre-Alpha: Beginning skaters are introduced to basic moves such as one and two-foot glides, dips, and swizzles.

Alpha: Progressively builds on the beginning basics. Skills include forward stroking, snowplow stop, forward crossovers, and backward swizzles.

Beta: Skaters learn backward stroking, backward crossovers, and T-stops.

Gamma: Moves at a faster pace and includes a combination of skills learned in Beta.

Delta: Skaters work on the positioning, techniques, and speed that form the foundation for jumps. Delta skaters also learn inside three turns, edges, shoot the duck, lunges, and bunny hops.

Jump and Spin: Skaters learn a progression of jumps, spins, and advanced combinations.

Team: Skaters build strength, develop artistry on the ice, and learn choreography for performance and competitions. Participants must also register for at least one Learn to Skate class per session. Final session of the season will end with an Ice Show for all skaters to participate.

For the most up-to-date class and activity schedules and registration information, go to pekinparkdistrict.org/activities-programs/ice-sports/



LITTLE STARS HOCKEY

Our popular Little Stars Hockey program is designed for the youngest hockey star hopefuls ages 3 to 5. Little Stars works on the fundamental skills of hockey: power skating, stick handling, passing, shooting, and most importantly, sportsmanship and team play. No prior skating experience is necessary. Our coaching staff has many years of hockey experience as former players and coaches.

Actual games begin at the end of the first session. All games are noncompetitive, set up to teach team play and concentrate on only the love of the game.

The league schedule will be two 45-minute practices and one game weekly. Loaner equipment will be provided at no extra charge.

Sessions are scheduled to begin September 19.

Practices and games are typically held:

Tuesdays: 5 – 5:45 p.m.

Wednesdays: 5:15 – 6 p.m.

Fridays (Games): 5:15 – 6 p.m.

Cost: \$82 R/\$85 NR per session



PEKIN PARK DISTRICT TUMBLE, DANCE, AND CHEER

Pekin Park District's Tumble, Dance and Cheer program is designed to develop coordination, balance, flexibility, and fitness in both girls and boys who are ready to learn. Physical development is one of the main benefits these classes have for children as they learn a great range of motion, body awareness, balance, muscle strength, coordination, and endurance. All classes are taught with a fun-to-learn approach and are held at the Gym & Dance Rooms located within Veterans Memorial Arena.

Classes are scheduled to begin the week of August 29. The Tumble, Dance and Cheer program has been restructured into six different six-week sessions for ease of registration. No more monthly fees. Just register for each session before it starts. This provides clear start point opportunities for new students to join the program throughout the year.

Go to pekinparkdistrict.org/activities-programs/tumbling-dance-cheer/ for the most up-to-date class and registration information.

TUMBLE

BEGINNING TUMBLE – MONDAY/TUESDAYS

5 – 5:30 p.m. Tumble Tykes #1
(Ages 2 – 3; must be potty trained)

In this class, students learn basic gymnastics skills through play. Students use the downstairs gym to work on strength, flexibility, and social skills. This class is preparation for the recreational tumble program.

5:30 – 6 p.m. Tumble Tykes #2 (Ages 4 – 6)

Tumble Tykes #2 is the advanced version of Tumble Tykes #1. Students progress at a quicker rate and work on physical and social skills.

MASTERING TUMBLE – MONDAYS/TUESDAYS

6 – 7 p.m. Tumble 1/2 (Ages 6 and up)

This is a beginner class that teaches the fundamentals of tumbling including backward and forward rolls, handstands, back-bends, bridges, and cartwheels. No experience necessary.

MONDAYS ONLY

7 – 8 p.m. Tumble 3/4 (Ages 6 and up)

In this class, we introduce front limbers, back-bends to kick overs, walkovers, running hurdle cartwheels, back handsprings, tucks, and more. Tumble 1/2 is recommended prior to participating in this class, but it is not required.

Each child will be evaluated by an instructor and placed in the appropriate tumble class level on the first week of class.



LINZEE D.



CHEER

CHEER TEAMS – WEDNESDAYS

5 – 6 p.m. Mini Cheer (Ages 3 – 5)

Mini Cheer is a great opportunity to introduce your preschooler to the sport of cheerleading. Athletes in Mini Cheer learn the basics of arm motions, tumbling, and stunting.

6 – 7 p.m. Junior Cheer (Ages 5 and up)

Junior Cheer incorporates tumbling progressions and cheer fundamentals. Students work on basic progressions such as forward rolls, backward rolls, handstands and handstand drills, cartwheels, and round-offs. Students also learn cheer motions, jumps, and stunts.

7 – 8 p.m. Elite Cheer (Ages based on skill and ability)

Elite Cheer is for the cheerleader wanting to step it up. This is a fast-paced, condition-oriented class including tumble strength and cardio endurance training. Cheer is tough and only the determined should enroll at this level.

DANCE

BALLET – TUESDAYS

5 – 6 p.m. Pre-K Ballet (Ages 3 – 5)

This is an introductory class containing ballet and creative movement. Young dancers learn basic ballet steps while learning how to follow direction and imitate movement in a positive and fun environment. Engaging music is used to get these little ones inspired to dance.

6 – 7 p.m. Ballet #1 (Ages 6 – 8)

This class is for beginner dancers ready to learn the basics of ballet. Students build off the five basic positions and master plié variations among other level-appropriate skills. Dancers utilize both barre and center floor work.



JAZZ / HIP HOP – TUESDAYS

7 – 8 p.m. Jazz / Hip Hop (Ages 6 and up)

A fun creative movement class with a dash of jazz, hip hop, and swag for tiny dancers to become comfortable on the dance floor.



HOW TO REGISTER:

Online: pekinparkdistrict.org

Fax: (309) 347-3970

Mail: 1701 Court St., Pekin, IL 61554

Walk-In: Veterans Memorial Arena

Monday – Thursday: 9 a.m. to 7 p.m.

Friday: 9 a.m. to 6 p.m.

A note about our classes:

Our more popular classes fill up quickly. Classes may be added, moved, combined, or dropped depending upon enrollment numbers.

What do I wear to Tumble, Dance and Cheer classes? For their safety, tumblers wear leotards or elastic waistband shorts with a T-shirt tucked in tightly (please no baggy shirts or jeans). Tumblers are barefooted or wear non-skid tumbling shoes. Hair needs to be pulled back away from the face. No jewelry please. Cheer wears a white tennis shoe (or cheer shoe). These shoes are to be worn in the gym only; no outside street shoes will be allowed on the Tumbler Trak™.

Dancers wear leotards, tights, or T-shirt with dance appropriate pants. All ballet classes wear ballet shoes; hip hop classes wear slip-on jazz shoes. Hair needs to be pulled back away from the face. No blue jeans or loose-fitting pants please.

Policy regarding observation of classes:

Because students focus and concentrate better without Mom or Dad in the class, family and friends are not allowed to observe classes. Periodically we will offer “Watch Week,” a time family and friends are invited to watch their dancer during the last 15 minutes of class. “Watch Week” dates to be announced.



BLAZIN' A TRAIL RIDING & BOARDING

HORSEBACK RIDING & CLINICS

Location:

Blazin' A Trail Riding and Boarding, Inc.
217 McNaughton Park Road
(309) 382-1268

Blazin' A Trail Riding and Boarding offers horseback riding camps, clinics, and guided trail rides through beautiful McNaughton Park. Whether you are experienced or a first-time rider, we'll take you through woods, creeks and wide-open spaces. Please dress accordingly for horseback riding — long pants and boots/shoes with a heel. Riders under 18 years of age are required to wear a riding helmet, which will be provided, or you may bring your own.

**DAY AT THE BARN
CREEK CAMP
CLINICS
SPA DAY
GUIDED TOURS
COVERED WAGON RIDES
& MORE!**

For more details, scheduling and availability, check us out on Facebook at 'Blazin' A Trail Riding and Boarding' or call (309) 382-1268



BIRTHDAY PARTIES

BIRTHDAY PARTIES AT THE PAVILION

Pekin Park District offers themed "Birthday-in-a-Box" Party Packages for children ages 4 – 10. These party kits take the hassle out of your party planning by providing a variety of fun party activities and decorations. Simply send out invitations and provide cake and refreshments. You'll be provided with a copy of instructions on how to play the party games or lead craft activities. All materials for activities are provided.

Cost: \$105/box or \$135/box plus on-site party host for up to 20 guests.

For more information, contact the Recreation Office at (309) 347-7275 or email recreation@pekinparkdistrict.org.

BIRTHDAY PARTIES AT IRVSRA RECREATIONAL CENTER

Dance Party

Packages for 3 or 5 hours include: Room rental fee, customized 190 inch backdrop/wall-splash, DJ, up lighting package, Dance & Party lights, dance floor.



Karaoke Party

Packages for 3 hours include: Room rental fee, DJ for karaoke, dance & party lights, uplighting and dance floor.

Putt-Putt Party

Package: room rental fee, customized 190 inch backdrop/wall-splash, one round of Magic Dragon mini-golf per guest.

Packages are customizable, and upgrades can be added individually per client request. For pricing and custom quotes contact (309) 201-4005 or email rentals@irvsra.org.



BIRTHDAY PARTIES AT VETERANS MEMORIAL ARENA

Party on Ice

Bring the party to Veterans Memorial Arena for ice skating fun! You provide invitations and cake, and we will provide soda, popcorn, and skates. Cost is \$7 per person.



For more information and to book a Party on Ice, call (309) 347-7275.



MILLER CENTER

Pekin Park District

Enjoy Your Age!



551 S. 14th St. | Pekin, IL 61554

Ph: (309) 346-5210

millercenter@pekinparkdistrict.org

www.pekinparkdistrict.org/facilities/miller-center/


 www.facebook.com/pekinmillercenter

Alisha Dault, M.A. – Administrator

Molly Brian, M.S. – Assistant Administrator

Sharon Hundt, Pat Look, Mary Ann Russell – Receptionists

Dick Brewer, Randy Nell, Mike Travis – Drivers

 **FREE WIFI!** ENJOY FREE Wi-Fi during your visit at the Miller Center.

Connect to: MillerCenter-Public

MILLER CENTER MAJOR SPONSORS

We extend our greatest appreciation to the following businesses that are generously sponsoring Miller Center programs, activities, and services.

- Busey Bank
- Cedarhurst of Pekin
- CEFCU
- Don Sarff, Insurance Representative
- Elmore Financial Services
- Farmington Village
- Health Alliance
- Humana
- ICPR
- John 3:16
- Liberty Village of Pekin - Pekin Manor & Pekin Estates
- OSF HealthCare
- Preston Hanley Funeral Home
- United Way of Pekin
- Unland Companies
- Villas of Holly Brook Pekin

The Miller Center engages adults 50+ in active life through active living! Drop by the center to meet with friends and make new ones too! Feel active and youthful when participating in the various activities and events offered here. There is always a friendly face to greet you as you enter. Once inside, join friends for a class or one of many games; express yourself through woodcarving and crafts; maintain a healthy body, mind, and spirit through exercise classes; or hop on the Miller Center bus for an adventurous day trip. At the Miller Center you will **ENJOY YOUR AGE!**

 **NEED A RIDE?** 

LET THE MILLER CENTER PICK YOU UP!

Pekin residents 50 and older can call to schedule a ride for destinations in Pekin and the surrounding areas. Medical appointments take precedence. Wheelchair transportation is available upon request. This service is made available in part through the Pekin Park District, Pekin United Way, fundraising events, and rider donations. "In-town" suggested donation is \$5. "Out-of-town" suggested donation is \$15. Wheelchair transport suggested donation is \$30. No one is turned away for inability to pay.

Call (309) 346-5210 to schedule your ride today!



RENT THE MILLER CENTER FOR YOUR NEXT:



- RECEPTION
- REUNION
- PARTY
- SHOWER
- LUNCHEON
- MEETING
- VENDOR SHOW



**AUDIO & VIDEO
AVAILABLE**



Come enjoy a free lunch while listening to a presentation on an age-related topic. There will be plenty of time to visit with vendors and learn more about local resources. Space is limited. RSVP to Miller Center.

Fee: FREE, registration required

The Power of Age Expo
CHANGING THE CONVERSATION ON AGING

Save the date **THE 4TH TUESDAY EACH MONTH**
DOORS OPEN AT 10:30

VENDORS | LUNCH | SPEAKER

Space is limited, please register in advance.

DATE	SPONSOR	TOPIC
September 26	CEFCU	Scams
October 24	Solvera Health	TCRC - Disability Etiquette
November 28	Health Alliance	Speaking Up for your Health
December 19	Villas of Holly Brook Pekin	A chat with Mrs. Claus
2024 Dates	Coming Soon	Coming Soon



FIND YOUR FUN AT MILLER CENTER

There is no shortage of fun and engaging activities at the Miller Center; there is something here for everyone! For a full schedule of activities, stop by the Miller Center for a copy of our monthly newsletter or check out our website for a complete schedule of fun and games.

PLAY & FUN

Drop in for **FUN & GAMES** throughout the week.
Check the newsletter or website for dates and times.

- Bingo
- Breakfast Bingo
 - 2nd Tuesday of the month
- Sponsored by Don Sarff, Insurance Representative
 - 5th Tuesday of the month
- Sponsored by Cedarhurst Senior Living
- Dartball
- Double Pinochle
- Euchre
- Game Day
- Hand & Foot
- Mah-Jongg
- Pinochle
- Popcorn Fridays! - Sponsored by Humana, Diane Houlihan
- Pool
- Show Time
- Shuffleboard

LEARN: Expand your mind and the rest will follow!

- AARP Driver's Safety Course
- Diabetes Prevention Program
- Digital Literacy Classes (YWCA Adult Literacy & AARP)
- Computer Lab – open to the public
- Matter of Balance – 8-week classes offered in Spring/Fall
- Rules of the Road

EAT

The Taste of TCRC is at the Miller Center! 11 a.m. to 1 p.m.
Monday – Friday. Call (309) 202-2368 to place your order!

MOVE: Get fit on any level!

- Exercise with Ann – sponsored by ICPR
- Line Dance Lessons
- Square Dances & Lesson
- Walking Club – sponsored by Farmington Village

CREATE: Get inspired to CREATE or learn a new skill with our many groups!

- Crafters & Conversations
- Lapidary Workshop
- Paint Days
- Quilters
- Woodcarving Shop

CLUBS

- Book Club - sponsored by Pekin Library
- Bottle Collector's Club
- Miller Melodies
- Pekin Garden Club

GO!

- Day Trips
- Golden Tours - Call Tracy: (309) 369-3171
 - Celebration Belle Fall Foliage Cruise - 10/14/23
 - Christmas Walk in St. Charles, MO - 12/02/23
 - More tours to come in 2024!

RIDE

- Transportation Service

SPECIAL EVENTS

- **Power Of Age Expo Mini Series** - See Page 27
- **Halloween Party** - Sponsored by Cedarhurst of Pekin
- **Friendsgiving**
 - Join us as we celebrate FRIENDSHIP on November 17, 2023 at Miller Center. We'll have a light lunch, dessert, games and a craft beginning at noon. This is a free special event brought to you by The Villas of Holly Brook.



MILLER CENTER MERCHANDISE

We are now selling branded items to help support the Miller Center! Call or stop by the front desk to place your order!

RESOURCE AND REFERRAL CENTER

Contact us for information or assistance concerning education, nutrition, health issues, legal aid, employment, transportation, recreation, counseling, and other topics for mature adults.

REFLECTIONS NEWSLETTER

Pick your copy up today!

Liberty Village of Pekin, Pekin Estates, and Pekin Manor sponsor our monthly newsletter, Reflections. It can be picked up at the Miller Center at the beginning of each month or check our website for a digital copy.



The Taste of TCRC is at the Miller Center!

Monday - Friday: 11:00 a.m. - 1:00 p.m.
Call (309) 202-2368 to place your order!



CHEF'S SPECIAL: SWEET-N-SOUR PORK

For catering details, visit: www.tcrorg.com/taste-of-tcrc/






10/14/23
Celebration Belle Fall Foliage Cruise in Moline, IL

12/02/23
Christmas Walk in St. Charles, MO

More tours to come in 2024!



TO MAKE RESERVATIONS, CALL TRACY (309) 369-3171



RENTAL FACILITIES

Spaces & Places Available for Rent

INDOOR FACILITIES

Pavilion on the Lagoon
Phone: (309) 201-4008

- Historic facility
- Kitchen access
- Includes tables and chairs
- Air conditioned/heated
- Overlooking the beautiful lagoon

Miller Center
Phone: (309) 346-5210

- Three spacious rooms
- Kitchen facilities
- Fireplace in McNaughton Lounge overlooking lagoon

IRVSRA Recreational Center
Phone: (309) 201-4005

- Two spacious rooms
- Includes tables and chairs
- Dance floor
- Audio visual equipment available



IRVSRA REC CENTER

OUTDOOR FACILITIES

Pekin Park District offers small and large shelter rentals at local parks. Outlying parks are first come, first serve. For reservation information call (309) 201-4008.

- Royal Avenue Shelter
- 4-H Shelter
- Rotary Park Shelter

SEASONAL FACILITIES

During specific seasons, there are opportunities to rent the following facilities. For reservation information call (309) 347-7275.

- DragonLand Water Park | (309) 201-4008
- Magic Dragon Mini Golf | (309) 347-7275
- Veterans Memorial Arena | (309) 353-4319
- Boating on the Lagoon | (309) 347-7275

WEDDING FACILITIES

During specific seasons, there are opportunities to rent the following facilities for your outdoor wedding. Call (309) 201-4008 for reservation information.

- Fountain
- Gazebo
- Pergola



GAZEBO

QUESTIONS?

AMERICAN DISABILITIES ACT

The Pekin Park District complies with the Americans with Disabilities Act (ADA) which prohibits discrimination in the provision of programs, services or activities to individuals with disabilities. We invite any resident with special needs to contact our staff upon registration so that a smooth inclusion may occur. Our district provides additional specialized services for people with developmental disabilities through IRVSRA. Feel free to call (309) 353-4328 if you:

- Have questions about the Pekin Park District's commitment regarding the ADA (Americans with Disabilities Act) policy
- Believe you have been unfairly discriminated against by the Park District
- Wish to file a complaint alleging discrimination on the basis of a disability in the provision of programs, services or activities by the Pekin Park District

CONTACT:

Cameron Bettin

Executive Director

ADA Coordinator/Compliance Officer

Pekin Park District

Robert N. Blackwell Administration Building
1715 Dragon Drive, Pekin IL 61554

Office Phone: (309) 353-4328

E-mail: cbettin@pekinparkdistrict.org

HOW TO REGISTER

Online: pekinparkdistrict.org

Fax: (309) 347-3970

Mail: 1701 Court St., Pekin, IL 61554

Walk-In: Veterans Memorial Arena

9 a.m. to 7 p.m.

Monday – Thursday

9 a.m. to 6 p.m.

Friday

QUESTIONS ABOUT A PROGRAM?

Program descriptions contain the Program Manager's contact information. Please call or email them with any questions you have.

PROGRAM REFUNDS

Refunds are given if a request is received seven days prior to the start of a program, less \$5 service charge. Refund requests less than seven days prior to the start date will receive a 50% refund. Refunds are mailed within three weeks. If a credit card was used with your online registration, your card will be credited. Refunds are not given after the start of a program, except for illness (note from doctor must be submitted) or if moving from the area.

SCHOLARSHIPS

Scholarships are available to Pekin Park District residents in need. Forms are available in the Recreation Reception Office. See page 7 for more information.

PARK DISTRICT RESIDENCY

Residency is available to anyone living within the Pekin Park District boundaries and paying taxes to the Pekin Park District. If you are in question regarding your residency, please call the Recreation Office at (309) 347-7275. Non-residents will pay an additional \$3 per program (unless otherwise noted).

PROGRAM WAIT LIST

Popular programs fill up fast! If this happens, please ask to be placed on a wait list for the next available opening.

LOST & FOUND

Items found on park grounds are turned into the Recreation Office located in Veterans Memorial Arena. If you discover you've lost something, please call the Recreation Office at (309) 347-7275 to inquire.



PEKIN PARK DISTRICT

	Blenkiron Park 601 Park Ave.	Coal Miners' Park 300 South Parkway Dr.	Everette McKinley Dirksen Park Route 98	Independence Park Enter at LaSalle Blvd.	James Field 101 South 9th St.	Kiwanis Park South 9th and Koch Streets	Kiwanis Park North 1620 Parish Ave.	John T. McNaughton Park 217 McNaughton Park Rd.	Miller Park 121 Court St.	Mineral Springs Park & Lagoon 701 Court St.	Railsplitter's Park 268 Derby St.	Riverfront Park 121 Court St.	Rotary Park 715 State St.	Southside Business Assoc. Park 200 Sapp St.	Sports Complex 300 Koch St.	Tante Park Broadway Rd.	Willow Park 500 Willow St.	Lick Creek Golf Course 2210 N. Parkway Dr.	Parkview Golf Course 2300 Broadway Rd.
PARKS, FACILITIES, AMENITIES & MORE	25 acres	47 acres	459 acres	340 acres	2 acres	6.5 acres	6.5 acres	800 acres	2.5 acres	220 acres	3 acres	2.5 acres	1.9 acres	1.2 acres	82 acres	43 acres	25 acres	160 acres	101 acres
Archery Range			1																
Ball Diamonds					2	1				4	1		1	1	12				
Basketball Courts										2			1	2			1		
Boating (fee at Mineral Springs Park)										1		1							
Camping (tent only) (fee)								1											
Concession Stands										2					2			1	1
Disc Golf								1											
Dog Park (lighted)										1									
Driving Range (fee)																		1	
Fishing (Lake Butterfield, Zuercher, Lagoon & River)								1		1		1							
Football Fields															4				
Golf Pro-Shop																		1	1
Hiking/Biking/Paths/Lagoon (total length trails) (x around = miles)		4.3 m	1	12.3 m	5x= 1m			1	1	2x= 1m		4.3 m			1x= 1.6 m	1			
Horse Stables (fee)								1											
Horseshoe Pits									1										
Indoor Ice Skating Rink (fee)										1									
Facility/Room Rentals (fee) Pavilion, Shelters, Miller Center, IRVSRA										5			1					1	
Miniature Golf (fee)										1									
Pekin Bike Trail - 4.3 miles (Allentown Rd. to Riverfront Park)		1							1	1									
Playgrounds	1					1	1	1	1	1	1	1	1	1	2		1		
Racquet & Full Fitness Facility (fee)										1									
Radio Controlled Airplane			1																
Restrooms/Comfort Stations	1	1						1	1	5		1	1		2			1	1
Rollerblade Hockey Court																	1		
Senior Center (50+)										1									
Shelters (fee)/TeePee Shelters	1	1	2			1	1	7	1	2		1	1	1		2			
Skate Board Park										1									
Soccer Field															10				
Swimming/Water Play Area										1		1							
Tennis Courts										5									
Volleyball Courts										4									

THANK YOU TO OUR SPONSORS



Borrow Local, Save BIG!

Pay 3X Less than National Online Competitors on Your Next Home Loan

Apply In-Person or Online @
firstpekinsavings.com



CORDTS

Heating & Air Conditioning, Inc.



120 E. Elizabeth St. Pekin, IL 61554 Phone: (309) 346-8392



Finding the right cleaning equipment & supplies doesn't have to be a dirty job.
Whether your needs are commercial or residential, stop by & see us!

WE BELIEVE IN CLEAN

SUPPORTING PEKIN FOR
MORE THAN 30 YEARS

STOP BY 2000 N. 8th Street Pekin, IL 61554 CALL 309.347.1584 EMAIL office@AtlasSupplyCompany.com VISIT AtlasSupplyCompany.com

Forbes AMERICA'S BEST BANKS

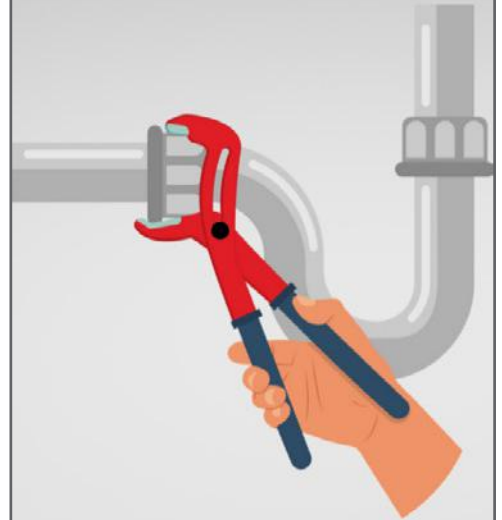
BuseyBANK®

Business | Wealth Management | Personal

Building **Business.**
Growing **Wealth.**
Since **1868.**

I OFFICIAL BANK OF THE FIGHTING ILLINI
busey.com Member FDIC

TUCKER
P L U M B I N G C O



- NEW CONSTRUCTION
- REMODELING
- SERVICE & REPAIRS
- QUALITY WORKMANSHIP

121 N. PARKWAY DRIVE • PEKIN, IL

347-6735



Proudly Serving Pekin
for Over 35 Years

Family Owned &
Operated

Commercial &
Residential

Lic# 058-136516

TUCKER
P L U M B I N G C O

SCHWARTZ ELECTRIC

Serving the Area for Over 60 Years
Prompt Service and Repair
Commercial • Industrial • Residential
Licensed and Bonded Electrical Contractor
309-347-2196





Custom Screen Printing •
Embroidery •
Pekin Apparel & much more •

T-SHIRT
HOUSE
PEKIN, ILLINOIS

(309) 346-0336
219 South Second St.

PROUD PRINTER FOR THE PEKIN PARK DISTRICT

TSHIRTHOUSE1@YAHOO.COM



**PEKIN PARK
DISTRICT**

Visit us at pekinparkdistrict.org

