



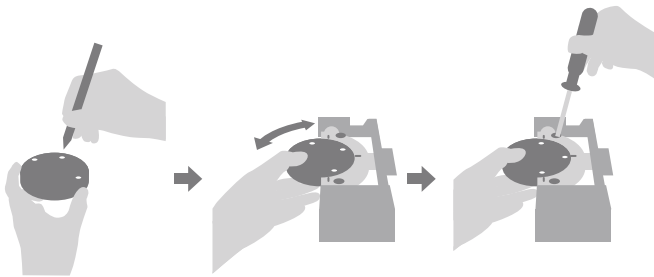
5-Axis Dental Mill  
***DWX-52Di Plus***

## DWX-52Di Plus

## Precision Performe and Efficiency Expert

### Introducing the New DWX 52Di Plus 5-Axis Dental Mill for Maximum Efficiency and Production

When designing this new model of the industry's best-selling series of dental mill. It was important to keep everything users love. Then make it even better, capable of producing a wide range of restorations, including crowns, copings, bridges, inlays and onlays, veneers, abutments, implant bars, screw-retained crowns, the DWX-52Di Plus 5-Axis dental mill offers a high reliable, precise, enhanced capabilities to make your lab more efficient and productive.



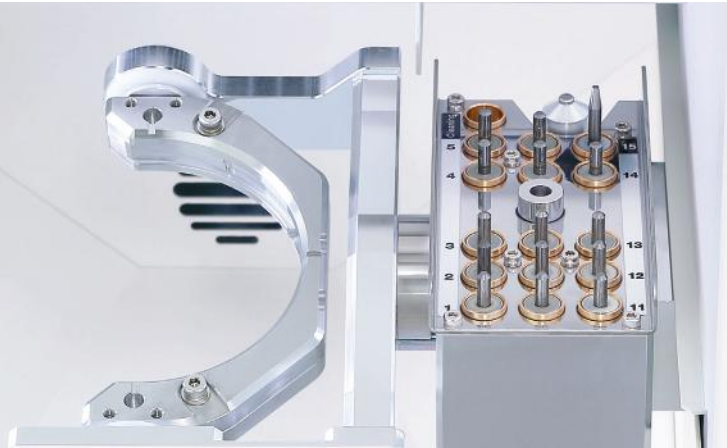
### New C-type Clamping System

The new C-type clamp system for 98.5mm discs offers fast and secure set-up of Zirconia, Wax, PMMA, gypsum, PEEK, glass fiber-reinforced resin, composite resin and CoCr sinter metal materials. The new C-type clamp enables greater material utilization.



### More Comprehensive Solution

The DWX-52Di Plus 5-Axis dental mill can produce a wide range of restorations, including crowns, copings, bridges, inlays and onlays, veneers, abutments, implant bars, screw-retained crowns.

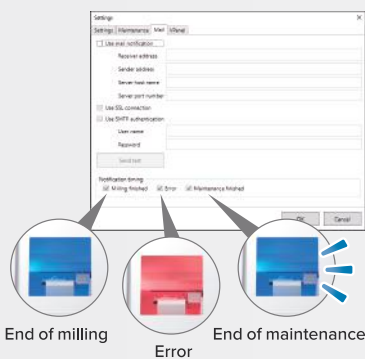


### 15-Station Automatic Tool Changer (ATC)

The DWX-52Di Plus provides continuous, unattended milling with a 15-station Automatic Tool Changer (ATC) and includes dedicated slot for an included cleaning tool. Now you can load the included cleaning tool into the ATC and set it up to automatically sweep away zirconia powder and other material dust for a cleaner milling surface.

### User-friendly Design

A user-friendly Virtual Machine Panel (Vpanel) enables convenient production and device monitoring from computer. Email notifications keep you informed of operational status, including milling and maintenance completion, or any errors in order to minimize down time.



### Precision 5-Axis Milling

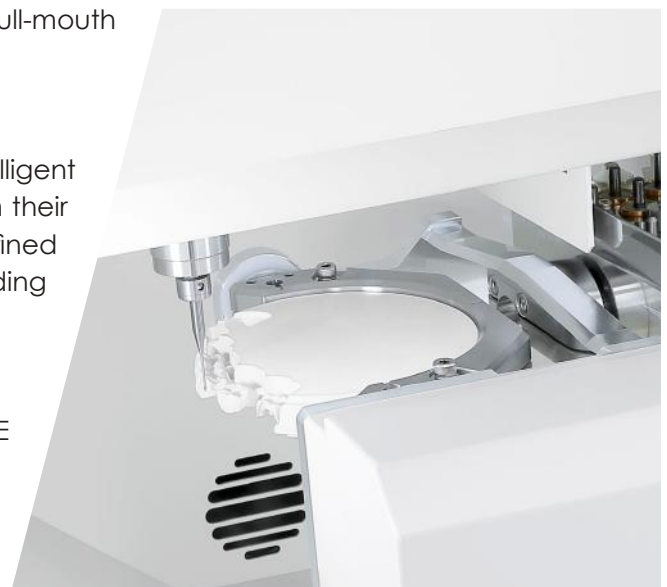
The DWX-52Di Plus simultaneously rotates and tilts discs for deep undercuts and milling large arch applications and other full-mouth restorations with ease.

### Intelligent Tool Control

Vpanel operation has upgraded to include the Intelligent Tool Control function that intuitively swaps out tools from their stocker position when they have reached their user-defined lifespan with a designated replacement tool without needing to pause production.

### Comprehensive Support Network

In addition to online or telephone assistance, DGSHAPE also offers educational seminars aimed at increasing customers' familiarity and confidence with products and services. Service engineers are also available worldwide to assist customers with any questions they may have.



Specifications	
<b>Millable Material</b>	Zirconia, Wax, PMMA, Composite Resin, PEEK, Gypsum, Glass-Fiber-Reinforced Resin, CoCR sinter metal
<b>Loadable workpiece shape</b>	Disc-type (with step) Step section: 98.5 mm (3.88 in.) (diameter), height 10 mm (0.39 in.) Body section: 95 mm (3.74 in.) (diameter), height max. 60 mm (2.36 in.)
<b>Operating speed</b>	XYZ axis: 6 to 1,800 mm/min. (0.24 to 70.9 in./min.)
<b>Spindle motor</b>	Brushless DC Motor
<b>Spindle rotating speed</b>	6,000 to 30,000 rpm
<b>Rotatry axis travel angle</b>	A: $\pm 360^\circ$ , B: $\pm 30^\circ$
<b>Number of milling burs housed</b>	15
<b>Attachable milling bur</b>	Shank diameter: 4 mm (0.16 in.), Length: 40 to 55 mm (1.57 to 2.17 in.)
<b>Compatible compressed air</b>	0.02 to 0.2 Mpa
<b>Control command set</b>	RML-1, NC code
<b>Interface</b>	USB
<b>Power requirements</b>	AC 100 V to 240 V $\pm 10\%$ , 50/60 Hz (overvoltage category II, IEC60664-1), 2.0 A
<b>Power Consumption</b>	Approx. 200 W
<b>Operating noise</b>	During operating: 70 dB (A) or less (when not cutting), During standby: 45 dB (A) or less
<b>External dimensions</b>	Widht x Depth x Height: 495 x 660 x 600 mm (19.5 x 26.0 x 23.6 in.)
<b>Weight</b>	67 kg (147.7 lbs.)
<b>Installation environment</b>	Indoor use, Altitude: Up to 2,000 m (6,562 ft.), Temperature: 5 to 40°C (41 to 104° F), Humidity: 35 to 80% (no condensation), Ambient pollution degree: 2 (as specified by IEC 60664-1), Short-term temporary overvoltage: 1,440 V, Long-term temporary overvoltage: 490V
<b>Included Items</b>	Power cord, USB cable, Manuals, DGSHAPE Software Package CD, Detection pin, Automatic correction jig, Material Adapter Rack, Pin-type material adapter, Hexagonal driver, Spanner (for clamp), Spanner (for spindle), Milling bur holders, Milling bur positioner, Cleaning tool, Option adapter ID labels, Dust collection hoses, Dust collection hose adapter, Regulator, Cleaning brush etc.