

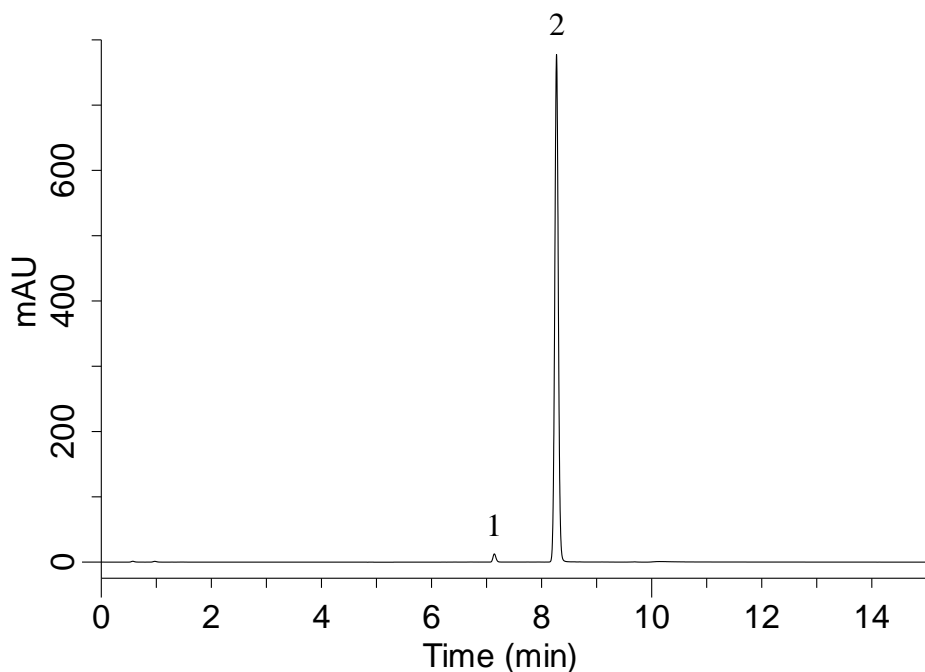
InertSearch for LC

Inertsil Applications

Analysis of Telmisartan and Amlodipine besilate

(Under the Condition of the draft for the Japanese Pharmacopoeia,
Telmisartan and Amlodipine Besilate Tablets)

Data No. LB631-0952



Conditions

System : GL7700 HPLC system
Column : Inertsil C8-3
(5 μ m, 75 x 3.0 mm I.D.)
Column Cat. No. : 5020-04923
Eluent : A) CH₃CN
B) 2 g/L NH₄H₂PO₄ in H₂O (pH 3.5, H₃PO₄)

Time (min)	A (vol%)	B (vol%)
0.0	10	90
2.0	10	90
7.0	80	20
8.0	80	20

Flow Rate : 0.8 mL/min
Col. Temp. : 40 °C
Detection : UV 270 nm (UV7750 UV Detector)
Injection Vol. : 5 μ L
Sample : Standard

Analyte:

1. Amlodipine besilate 28 mg/L
2. Telmisartan 320 mg/L

Resolution (1,2) : 10.4 (≥ 5)
RSD of the peak area of 2 (%) (n=6)
: 0.08 (≤ 1.0)