

THE HOMESCHOOL HERALD

FALL 2023

Washington County
Early Industries

VOL 1 ISSUE 1

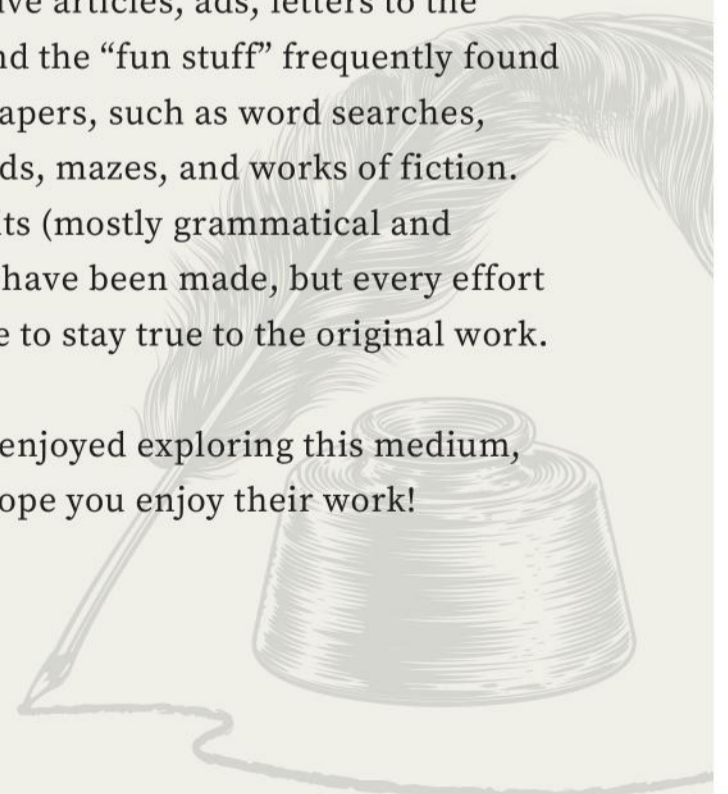


INTRODUCING 'THE HOMESCHOOL HERALD'

This fall, we introduced a unit study approach to our homeschool program. The classes, which typically range in age from 8-14, focused on **Washington County's early industries**. Each class builds on the other and the activities combined created this newspaper! We're thrilled by the positive responses to the unit study approach - from students and parents - and are excited to announce that our next unit study (fall 2024) will explore **Natural History!**

This issue contains various pieces, including informative articles, ads, letters to the editor, and the "fun stuff" frequently found in newspapers, such as word searches, crosswords, mazes, and works of fiction. Slight edits (mostly grammatical and spelling) have been made, but every effort was made to stay true to the original work.

The kids enjoyed exploring this medium, and we hope you enjoy their work!



WASHINGTON COUNTY'S ALUMINUM INDUSTRY



INTRO TO ALUMINUM

Written by Ava K. & London M.

Aluminum comes from a rock called Bauxite. It's very hard to remove the aluminum from these rocks. For a while, mining was difficult because they had to do it by hand. Eventually, they used electricity to pull out the aluminum. Once they have some, it can be put into sheets so they can cut it out and can be melted into different molds. In 1854, aluminum cost \$17.00 per pound, but it was reduced to \$0.34 per pound in 1900 when it became less difficult to mine.

WHY WISCONSIN?

Written by Iommi H. & Roman R.

By 1920, over half of the aluminum cookware was made in Wisconsin, and for more in-depth, five hundred pieces of aluminum were made in West Bend. The reason why Wisconsin had so much aluminum is because Wisconsin was right next to Lake Michigan so it was easier to transport the aluminum by boat!

THE EARLY YEARS: 1911-1935

Written by Stella D. & Burton S.

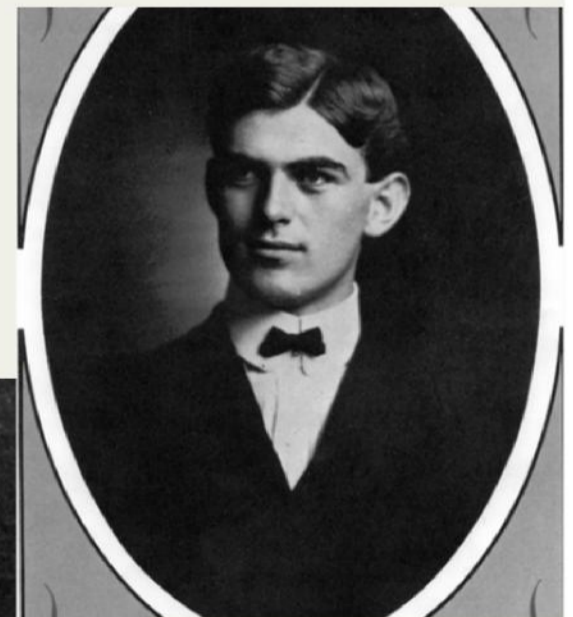
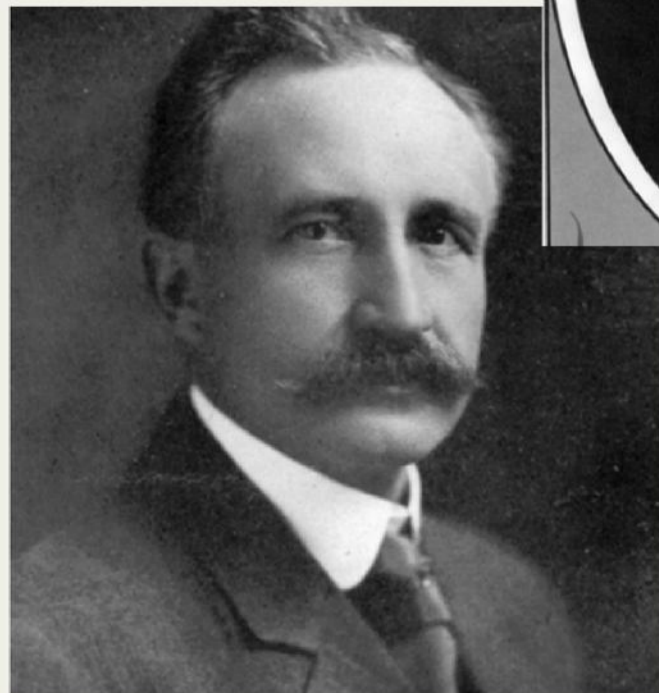
Who - B. C. Ziegler (top left) and Adolph Rosenheimer (bottom left)

What - B. C. Ziegler started West Bend Aluminum Company and Adolph Rosenheimer started Kewaskum Aluminum Company (would become Regal Ware).

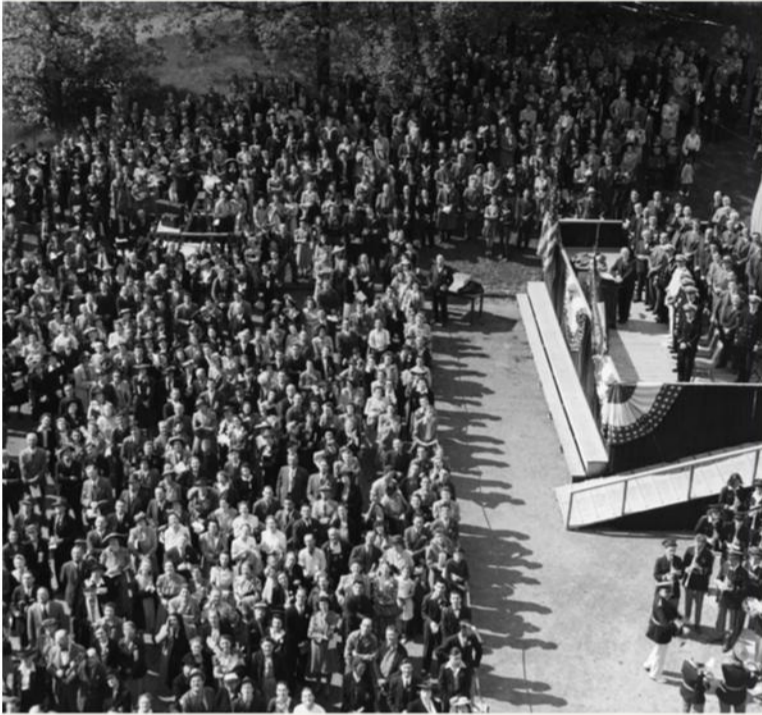
When - B. C. Ziegler started in 1911. Adolph Rosenheimer started in 1919.

Where - B. C. Ziegler started in West Bend. Adolph Rosenheimer started in Kewaskum.

Why - Adolph started because of Prohibition (needed a use for his . B. C. was inspired by what he saw in Manitowoc.



WASHINGTON COUNTY'S ALUMINUM INDUSTRY



THE WAR YEARS

Written by Leuie K., Evaline S., & Jack W.

Inquiring minds want to know: what was the aluminum industry like in World War II? The company started by making household wares but transitioned into making weapons and ammo for the war. They got their first Navy E Award in May of 1942. Just one month later, Adolph Rosenheimer, the head of the company, died. They got six Navy E awards since. Later that same year, James Riegler took the company into his own hands. He changed the name to Regal Ware to embed in people's minds that "this is for the royal! If they like it, I will like it too!" The success of Regal Ware has continued until the present, and still sells wares in aluminum and copper, too.

(Pictured at top: May 1942 - West Bend Aluminum Company receives the Navy E Award.)

Washington County's Automotive Industry CLASSIFIEDS



1923 KISSEL MODEL 6-55 -\$3,000

Luxury model for a more stylish ride. You can enjoy a smooth ride while enjoying our new deluxe opera rear windows. Travel for longer trips with our storage space on the back. Rear mechanical brakes offer a safer option for your family. - London M. & Ryker V.

**YOU NEED TO GET
SOMEWHERE IN 20
MINUTES!**

What do you do? Well, buy a Kissel, of course! The all new five passenger Kissel is a car fit for kings with its soft roof, rear mechanical brakes, standard transmission, and windshield wipers! It also comes with a customizable license plate! Buy now at the Kissel Motor Car Company for only \$1,999! Call us for any additional questions at (262) 8KI-SSEL. - Jack W.



Washington County's Automotive Industry

CLASSIFIEDS



**1925 KISSEL
MODEL 8-75 -
\$3,085**

This eight-cylinder, 75-horsepower rare enclosed speedster has the best engine Kissel ever made. Features include two free golf club sets, two spare tires, and a sunshade so you can see while it's sunny. - Blaine R. & Burton S.



BUY THE GRAY 1918 KISSEL MODEL 6-38

This Kissel features a staggered door entrance. The summer top came as standard equipment, the sedan top cost an additional \$350 (optional to buy). The cost of this car when it's new is \$1,935. It has a six-cylinder engine, 25 horsepower, and a 116" wheelbase.- Stella D.

**FOR SALE:
1923 MODEL
6-45 KISSEL
SPEEDSTER
"GOLD BUG"**



Manufactured by the Kissel Motor Car Company in Hartford, WI, this car features a six-cylinder, 45-horsepower engine along with wire wheels, two spare tires, storage space in back, and slide-out "suicide seats" on both sides. Many Hollywood stars own one of these beauties. Own one today for only \$3,500. - Kallen R.

**1926 KISSEL MODEL 8-75
DELUXE - \$2,985**

The price is very reasonable - a very nice car, a beautiful color, and as you can see a very cool wheel color. The red wheel color with a navy blue body color is a very cool combo. It has an eight-cylinder engine, a 140" wheelbase, and some of the most comfortable seats. With a 75-horsepower engine, this car features four headlights and two spare tires. - Beau K.



1925 KISSEL

This 61-horsepower Kissel drives fast and is made to carry golf clubs! Color: orange. A side mirror is included on the spare tire. Two spare tires are included. - Elijah & Evelyn R.

**BUY THE GRAY
KISSEL CAR!**

It was made in 1918. No matter what, it will stay shiny, and to top that, it is one of Kissel's groundbreaking and award-winning all-year cars! It is only \$1,935! And if you buy it, you will never regret it! - Iommi H.



Washington County's Automotive Industry

CLASSIFIEDS



THE 1912 KISSEL

This is not your particularly ordinary car/Kissel. This Kissel is extraordinarily still in running condition, and it was made in 1912. This old automobile was discovered in Green Bay, WI, 111 years ago! This Kissel might have been discovered in Green Bay but was manufactured in Hartford, WI. Something special about the 1912 is that it was the last year Kissel manufactured steering wheels on the right-hand side. This is why you should look into a Kissel.
- Lola K. & Roman R.

ARE YOU TIRED OF YOUR CAR ALWAYS BREAKING DOWN?

Maybe it's time for a new one. How about...THE 1914 KISSEL WOOD WHEEL CAR? It has won many hill climb contests and it's been owned by the same family since the late 1950s. And they are looking for a lucky buyer. Is that you? - Gemma R. & Evaline S.



WASHINGTON COUNTY'S LEATHER INDUSTRY

LETTERS TO THE EDITOR

DEAR EDITOR,

I love this purse! But I dislike the diamond pattern. The color is good. It is smooth and hard at the same time.

**Signed,
Evaline S.**

DEAR EDITOR,

I love my new Enger-Kress wallet! It is a magnificent dark purple, and it is very smooth, so it is nice to touch. It has many compartments so it can fit everything I would like to put in it, from money to pictures. And it is big enough to fit in my pocket or my purse. So, overall, this is a great wallet. Thank you, Enger-Kress.

**Signed,
Iommi H.**

DEAR EDITOR,

This Enger-Kress is the best wallet ever. I like the scaly texture, brown color, and how small it is. It works so good to hold everything. I really like it.

**Signed,
Leuie K.**

DEAR EDITOR,

This wallet I really like. The color is a pretty red with hits of black, which looks nice. It is nice and small and can fit many things with its seven compartments. There is also a little compartment with a buckle so nothing can fall out. I like the buckle that keeps it closed. Overall, I really like this wallet, and it looks nice.

**Signed,
London M.**



DEAR EDITOR,

This wallet is a very nice size. It can fit a lot of credit/debit cards and money. It has a very nice texture. The wallet fits very nicely into your pocket and opens and closes very easily. I am not very happy with the color - I wish it were the same brown instead of a light and dark brown pattern. But it is a very nice wallet.

**Thank you,
Beau K.**

DEAR EDITOR,

I love the new wallet I just bought. I love the texture of the leather. And the secret pocket is so cool. I would definitely buy it again. I like the colors - the dark brown and light brown are so cool.

**Signed,
Burton S.**



WASHINGTON COUNTY'S LEATHER INDUSTRY

LETTERS TO THE EDITOR

DEAR EDITOR,

This wallet from Enger-Kress is not my favorite. For starters, it is very standard. The genuine sheepskin emits particles into my hands. It is a dull dark brown, and I couldn't figure out how to open it at first. It has five different compartments, so I always forget where I put each thing. I have a lot of valuables, so my wallet looks like a meatball. I try to condense by putting much less stuff into it, but it's already warped beyond fixing. With the dull color, nobody would expect a bright red with it, but it exceeds confusion. As I sort of said before, it is way too small! I need to cram everything into it. The worst part about this is when I'm cramming things in. It spews about 30 particles every second, so when I'm done shoving things in, it looks like I came back from a coal mine! This is not as good as I thought it would be, but I don't know what I expected. Someone needs to make a better version or modify it soon.

Signed,
Jack W.

DEAR EDITOR,

The things I like about this wallet are the natural green color and smooth texture. The pattern is sort of a snakeskin pattern. The details include a pocket in the front that can't even fit my debit card and a flap to keep stuff from falling out, which is nice, but it feels like I'm going to break the button whenever I open it. Inside, there are not a lot of pockets, but overall, I give it a 4 out of 10.

Anonymous



DEAR EDITOR,

The gold zipper on the inside seems like it would come in handy for keeping things safe or secret. The soft feeling on the outside of the bag is nice, but it seems like it might be slippery. I feel that there could be more zippers or pockets, etc., because it has considerable space. Enger-Kress did an impressive job with the detail and color. I love the pinkish-redish color. It reminds me of watermelon, which reminds me of summer. I definitely would carry this in my backpack with a pair of keys, change, and money. This product is overall nice quality.

Signed,
Lola K.

DEAR EDITOR,

I like the Enger-Kress genuine Cabretta. It has space for an identification card and calendar. I do not like the color (red), and it is big and bulky.

Signed,
Blaine R.

DEAR EDITOR,

This wallet is red and kind of looks scaly - like snake skin. What I like about it is its size because it's a good size to fit in a pocket. The texture is really smooth and a little bumpy. What I don't like about it is its color. It's too shiny for me. The scaly pattern is mainly vertical, but it is horizontal in some parts. Thank you for reading this!

Signed,
Stella D.

DEAR EDITOR,

I really liked Enger-Kress' key case in Heritage Saddle Cowhide. The case is a dark red on the outside and closes with a snap button. Inside, there are six brass hooks fastened to a metal plate. It is small enough to fit in a pocket but large enough to hold all my keys. I like the fact that the hooks can swivel out of the case to make using the keys easy. The only thing I dislike about this key case is that the leather is a little stiff. Thank you for recommending this excellent item.

Signed,
Kallen R.

Washington County's Lumber Industry ENTERTAINMENT & AMUSEMENTS

WORD

SEARCH

BY KALLEN R.



Find the following words in the puzzle.
 Words are hidden → ↓ and ↘ .

BARK
 CAMP
 COOK
 FLAPJACKS
 FOREMAN

LOG
 LUMBERJACK
 MAPLE
 OAK
 OXEN

SAW
 SPRUCE
 TIMBER
 WALNUT

WORD

SEARCH

BY BLAINE R.

& BURTON S.



Find the following words in the puzzle.
 Words are hidden → ↓ and ↘ .

ASH
 AX
 BEANS
 BLACKSMITH
 BOOTS

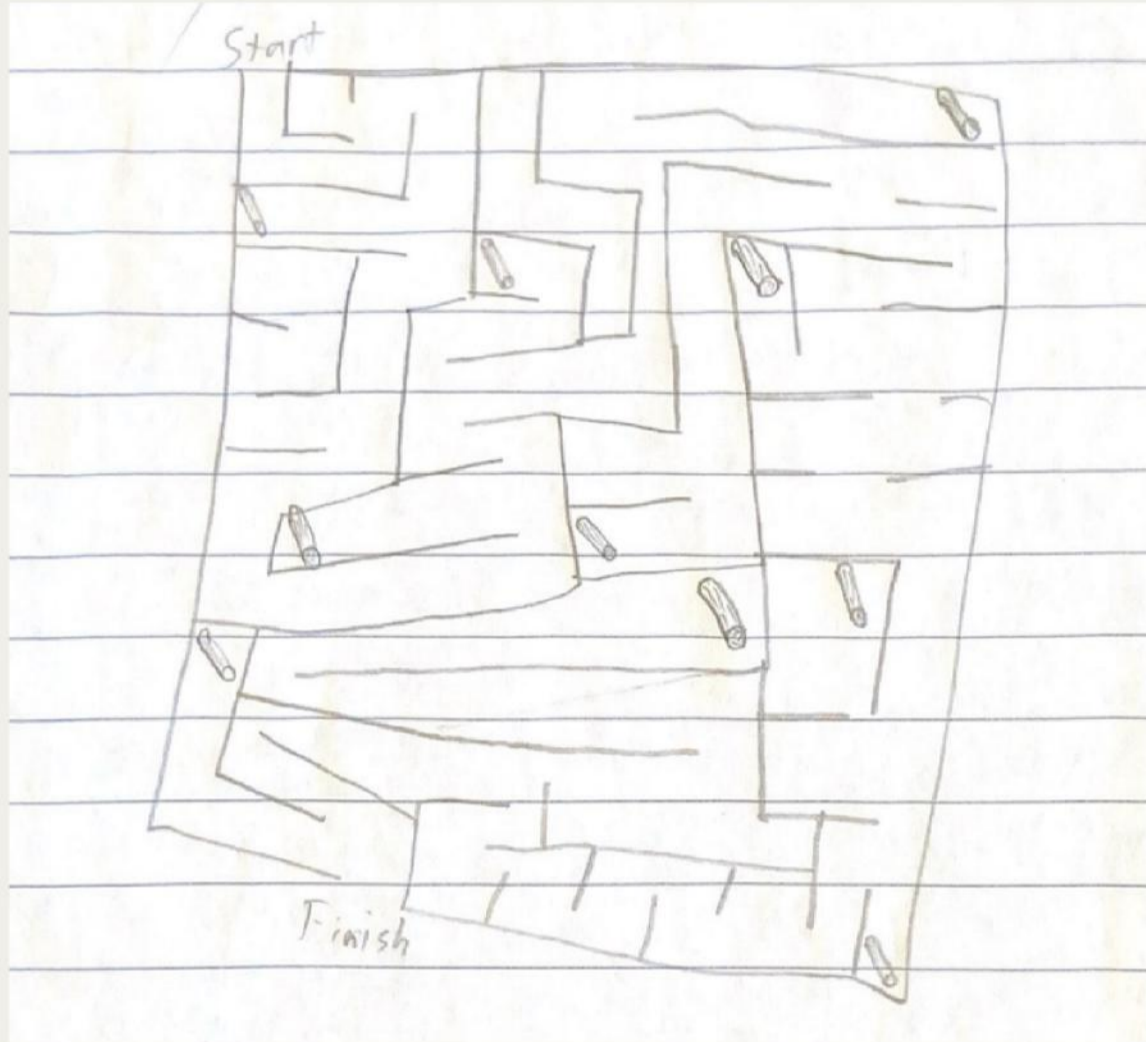
COOK
 COOKEES
 DONUTS
 MAPLE
 MILL

OAK
 PINE
 SLED

Washington County's Lumber Industry ENTERTAINMENT & AMUSEMENTS

MAZE

BY ROMAN R.



WORD

SEARCH

BY STELLA D.

& EVALINE S.



Find the following words in the puzzle.

Words are hidden → ↓ and ↘ .

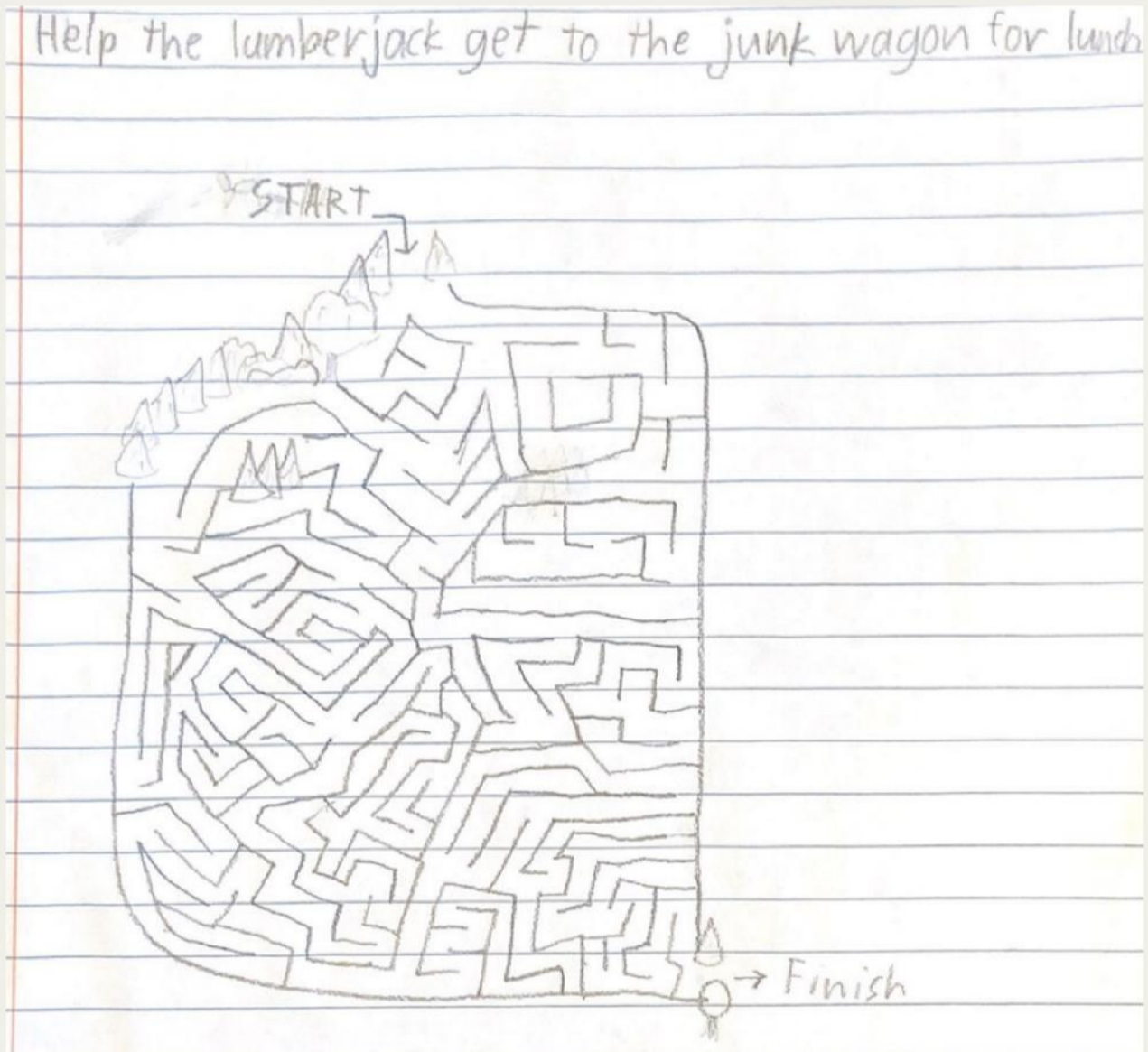
BLACKSMITH
CHOPPERS
COOK
COOKEES

LUMBER
PULPMILLS
SAWMILLS
STOREKEEPER

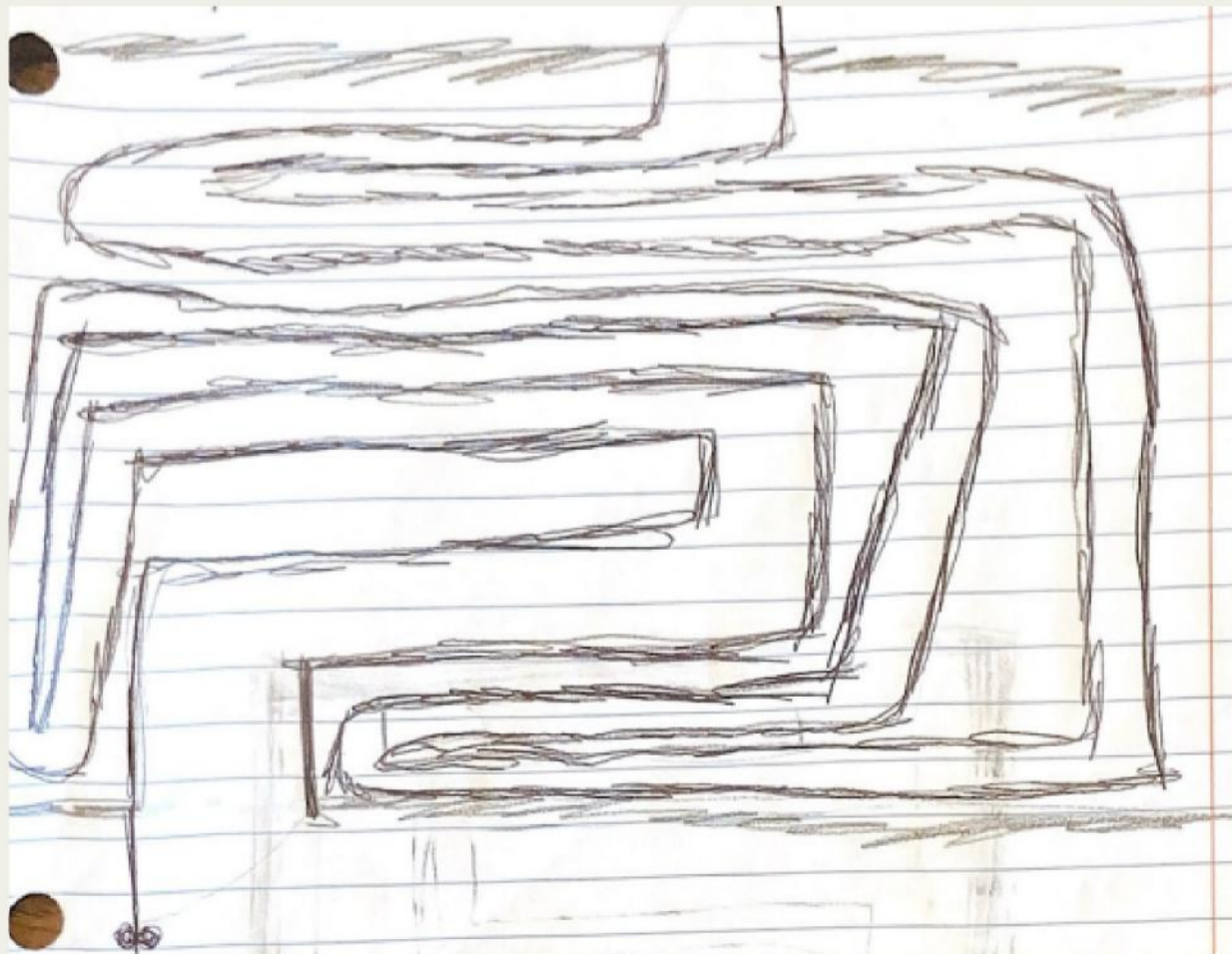
TREE

Washington County's Lumber Industry ENTERTAINMENT & AMUSEMENTS

**MAZE BY
KALLEN R.**



**WORD
SEARCH
BY STELLA D.
& EVALINE S.**



Washington County's Lumber Industry ENTERTAINMENT & AMUSEMENTS

MAD LIBS!

"BABE THE

BLUE OX"

BY IOMMI H. &

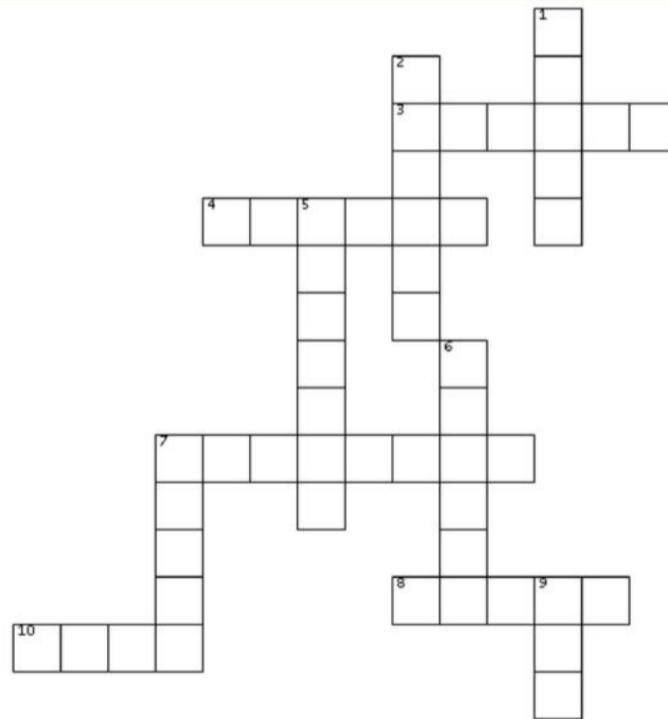
ROMAN R.

Before Paul Bunyon came around there was a baby blue ox named Babe. Babe loved to go out and _____ with other oxen but he got bullied because he was too _____. But then one day, he met a girl pink ox named Baba and she also got bullied because she was too _____ too. Once they met, they immediately became best _____. After they became best _____ they did everything together. They _____ together, they _____ together, they even _____ together! Then one day the both decided to _____ to a magical land where other different colored oxen lived. Then, they lived happily ever after! The end

CROSSWORD

PUZZLE BY

JACK W!



ACROSS

- A fruit-bearing tree prized for its beautiful blossoms and delicious, juicy cherries.
- A coniferous tree characterized by its spire-like crown and short, prickly needles.
- A tropical hardwood tree valued for its rich, reddish-brown wood used in fine furniture.
- A fragrant tree with reddish wood, often used for its natural resistance to insects.
- A common type of coniferous tree known for its needle-like leaves and pine cones.

DOWN

- A tree with distinctive white bark and small, serrated leaves.
- A genus of trees known for their distinctive pods and often found in arid regions.
- A towering coniferous tree native to California, known for its height and longevity.
- A dense, tropical forest characterized by lush vegetation and diverse wildlife.
- A tree famous for its vibrant autumn foliage and the source of delicious maple syrup.
- A tree with opposite compound leaves, known for its strong and flexible wood.

Washington County's Lumber Industry ENTERTAINMENT & AMUSEMENTS

Oaky the Oak Tree by Stella D. & Evaline S.

This tree here, the name is Oaky. Oaky is four years old. His mom and dad had been chopped down by humans. Oaky is a tall tree. But he has many friends to hang out with. One day he was playing with his friends and then all of a sudden, a very mean tree pushed Oaky and his friends into the river. The river was heading straight towards a saw mill. DUN DUN DUN!



Choose Your Own Adventure! by Iommi H. & Roman R.

It's December 20, 1905. You are a lumberjack searching for a nice tree to cut down and you find three good trees. Which tree should you cut down? A big oak tree, an aspen tree with beautiful yellow leaves, or a small pine tree? Choose wisely.

If you chose the big oak tree, it's actually the biggest tree in the forest and fell on another tree, causing the forest to collapse like dominoes. If you cut down the beautiful aspen tree, it was the prettiest tree in the world and now it's gone. But, if you chose the pine tree, you may have noticed at the beginning of the story that it's almost Christmas! So now, you have the perfect Christmas tree.



Lumberjacks and What They Ate by Jakk S.

Lumberjacks ate a lot of sugary food and other food like meats, beans, donuts, and pancakes. When it was winter, the food could get very cold, so they ate their food fast.

