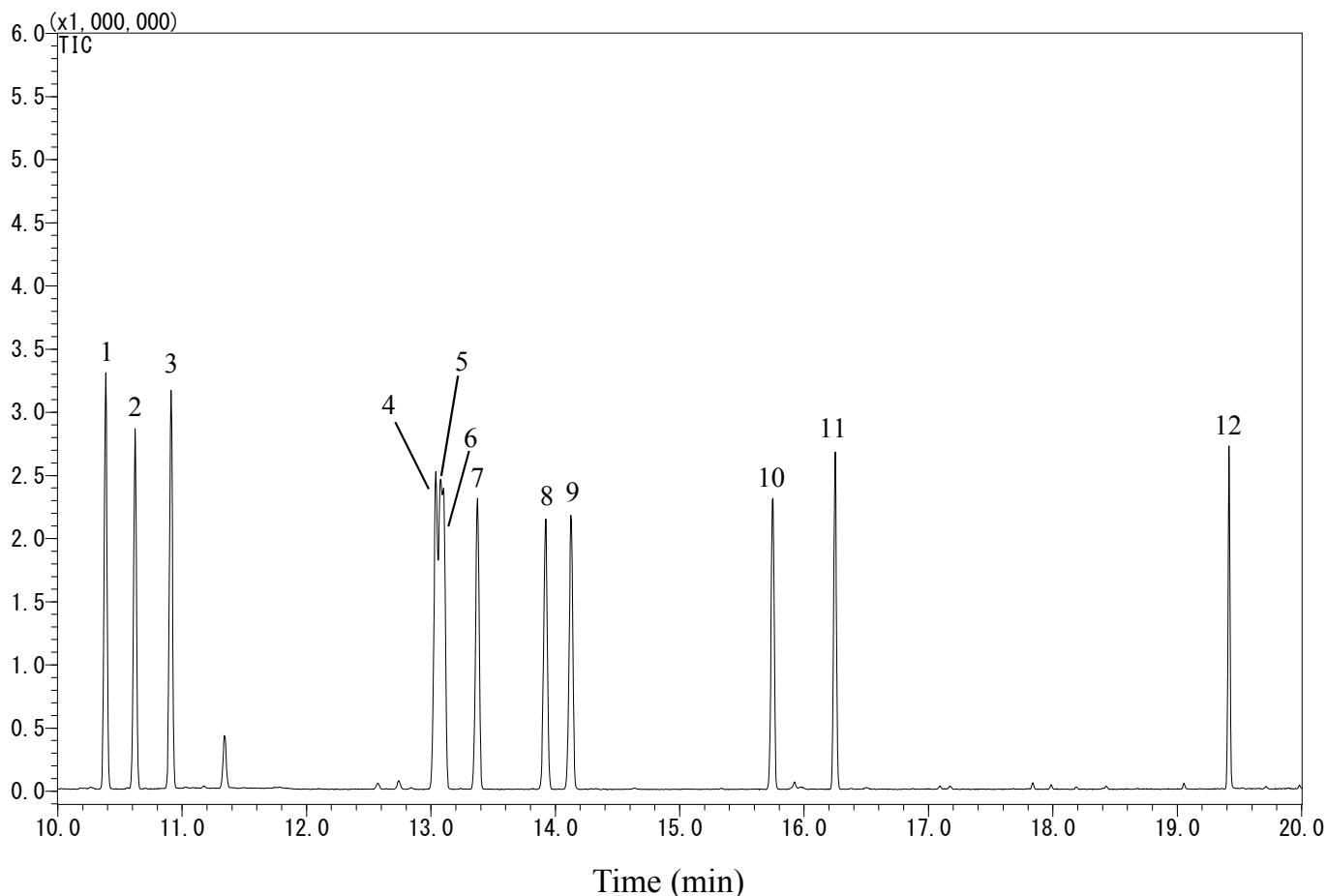


Chlorophenols

Data No. GA 257-0644



Conditions

System : GC-MS
Column : InertCap 5MS/NP
0.25 mm I.D. x 30 m df = 0.25 µm
Col. Cat. No. : 1010-18642
Col. Temp. : 40 °C (1 min hold) - 10 °C/min - 120 °C
- 5 °C/min - 150 °C - 20 °C/min
- 280 °C (5 min hold)
Carrier Gas : He 36.1 cm/s
Injection : Splitless 1min
250 °C
Detection : MS Scan (*m/z* 35 - 450)
Interface Temp. 280 °C
Sample Size : 10 µg/mL in Acetone
1 µL

Analyte :

1. 2-Chlorophenol
2. 3-Chlorophenol
3. 4-Chlorophenol
4. 2,5-Dichlorophenol
5. 2,6-Dichlorophenol
6. 3,5-Dichlorophenol
7. 2,4-Dichlorophenol
8. 2,3-Dichlorophenol
9. 3,4-Dichlorophenol
10. 2,4,6-Trichlorophenol
11. 2,3,6-Trichlorophenol
12. Pentachlorophenol
(TMS Deriv. by BSTFA)