



# California Farm Equipment Magazine

MAY 2026 Volume 45 • Number 5

[www.californiafarmequipment.com](http://www.californiafarmequipment.com)



**LS** Tractor

Start Blue. Stay Blue.

*For your Dealer See Page 23*



# PROUDLY SERVING FARMERS SINCE 1954

NEW & USED SALES - SERVICE - PARTS - RENTALS

## A PARTNER IN YOUR COMMUNITY



Colusa, CA - Dixon, CA - Dos Palos, CA - Merced, CA - Redding, CA  
Stockton, CA - Stratford, CA - Turlock, CA - Willows, CA - Yuba City, CA  
Reno/Sparks, NV - Harrisburg, OR - Madras, OR  
Rickreall, OR - Woodburn, OR

# (888) 246-0892



\*PER MANUFACTURER AGREEMENTS, ITEMS LIMITED TO AUTHORIZED LOCATIONS.



The new Farmall 35A and 40A compact tractors highlight Case IH's focus on comfort, visibility and all-day versatility.

## Case IH Launches Farmall 35A and 40A Compact Tractors for Enhanced Operator Comfort and Versatility

Case IH is expanding its Farmall® family: the Farmall 35A and 40A compact tractors. Built for versatility, engineered for comfort and designed to keep operations moving forward, the new Farmall compact series tractors deliver comfort-built power from sunup to sundown. Their adaptable design helps operators save both time and money.

Created for maximum operator comfort and safety, the Farmall 35A and 40A feature a wide platform and a spacious step-through design that make it easy to enter and exit the tractor. A premium cushioned seat and ergonomic controls ensure all-day comfort, while clear sightlines enhance safety and a strategically placed loader joystick allows for intuitive operation.

“From operator station comforts to powerful capabilities, these compact

*“The new Farmall 35A and 40A tractors are not only more comfortable, they make work easier and more efficient.”*

*— Leo Bose. Case IH*

tractors are designed with the operator in mind, simplifying tasks and maximizing control and productivity.”

Operators can choose between a 3-range hydrostatic transmission or a 12x12 gear transmission to best meet their needs. To maximize runtime by reducing fuel

stops and maintenance, the Farmall 35A and 40A come standard with an easy-fill 12.6-gallon tank and a common-rail diesel injection system.

Powering implements is simple with an optional live third-function loader control, higher 3-point lift capacity and optional stackable hydraulic remotes. The new Farmall tractors also feature a dual pedal design for quick forward-to-reverse changes and also offer a factory-matched loader and improved backhoe with a quick-mount system for faster setup and better ground clearance.

The Farmall 35A and 40A come ready for an entry-level telematics modem to be installed. This enables easy and simple integration into Case IH FieldOps™ for 5 years of connectivity, where customers can monitor their machines in real-time and view GPS location through the app.

# Electric Weed Control Demonstrations Begin in California Specialty Crop Fields



For many growers, weed control isn't getting easier—it's getting more complicated. Fields that were once manageable with a standard spray program are now requiring multiple passes, tighter timing, and more cost, with results that don't always hold. While new chemical solutions may extend the lifecycle of weed control tools, they don't fundamentally change the cycle of resistance farmers are now confronting.

As a result, more growers are beginning to look at additional approaches that can work alongside existing programs. One option gaining attention is **electric weed control**. At LASCO, the **Lightning Weeder™** system uses targeted electrical discharge to move through the plant's internal water channels and into the root structure, disrupting the weed from the inside out—without chemical application or soil disturbance.

Because the process relies on electricity rather than chemistry, it does not contribute to resistance buildup. At the same time, it offers a way to reduce reliance on repeated herbicide applications while preserving soil biology and field conditions.

As input costs rise and herbicide performance becomes less predictable, the path forward for many farms may not come from a single new product, but from combining multiple tools. Integrating non-chemical technologies like electric weed control into existing practices is one way growers are beginning to rethink long-term weed management.

## Expanding into Specialty Crops

Most electric weed control systems to date have largely focused on broad-acre row crop operations, while attention is now beginning to shift toward specialty crop environments where precision, maneuverability, and equipment size play a critical role. Crops such as blueberries, vineyards, orchards, and vegetables are typically managed with smaller tractors and tighter field spacing, creating a different set of operational requirements.

As interest in alternative weed control methods expands into these environments, equipment is evolving to better match the needs of specialty crop growers.

As part of this effort, LASCO is working alongside California growers to introduce a **compact version of its Lightning Weeder™ system** designed for specialty crops, including blueberries, vineyards, and other row-grown produce. Built to operate with smaller tractors in the ~45 horsepower range, the unit is being adapted for conditions where tighter spacing and maneuverability are essential.

Field demonstrations and small grower meetups planned for **May** in regions such as **Tulare** and **Marysville** will give farmers the opportunity to see the system in real working conditions. These sessions are intended to help growers understand how electric weed control can fit into everyday field operations, while also providing valuable feedback to support continued refinement of the system for precision farming environments.

## A Broader Shift Toward Electrification

Interest in alternative weed management strategies continues to grow, driven not only by resistance concerns but also by rising input costs, regulatory considerations, and the need for more diversified approaches within integrated weed management programs. At the same time, agriculture is seeing a broader shift toward **electrification**, with new technologies exploring how energy-based systems can complement traditional field practices.

For specialty crop growers, the ability to integrate new tools without significantly altering existing operations remains a key consideration. As compact electric weed control systems continue to be developed through field demonstrations and grower collaboration, they may offer a practical addition to the evolving set of options available for managing weeds in modern agriculture.

## About LASCO

LASCO develops electric-based weed control systems designed to provide growers with an alternative to chemical herbicides. Its **Lightning Weeder™** utilizes an electric discharge system (EDS) to target weeds through applied electrical energy, supporting integrated weed management strategies while minimizing impact on surrounding crops. The company focuses on delivering practical, farm-scale solutions that can be integrated into existing agricultural operations, helping growers address weed resistance and evolving field management challenges.

To support adoption during the growing season, **LASCO is offering free setup and delivery for new systems through June 15.**

Learn more at [www.lightningweeder.com](http://www.lightningweeder.com).

# Inspired by Farmers. Grounded in Performance.



NEW COMPACT UNIT DEMOS IN CA – MAY  
CALL FOR DETAILS 218.791.6536

At **LASCO**, we develop proven, chemical-free weed control systems shaped by science and on-farm experience, that give farmers reliable tools that reduce complexity, restore soil vitality and diminish chemical dependence, safeguarding farmers, our lands, and our future generations.

The **LASCO ELECTRIC DISCHARGE SYSTEM (EDS) LIGHTNING WEEDER** cuts costs, increases yield—a smart investment. The patented applicator is hydraulically controlled for height adjustment to address a wide variety of crops effectively eliminating those chemical resistant weeds organically, providing cost savings both in labor as well as materials and water.

When you have tried everything else to address your weeds, contact us. Lightning Weeder works.



[lightningweeder.com](http://lightningweeder.com)



Look for Lightning Weeder at an equipment distributor near you

## US farmers expect to plant less corn and more soybean acres

Producers surveyed across the United States intend to plant 95.3 million acres of corn in 2026, down 3% from last year, according to the Prospective Plantings report released today by USDA's National Agricultural Statistics Service (NASS).

Planted acreage intentions for corn are down in 37 of the 48 estimating states. Acreage decreases of 300,000 acres or more from last year are expected in Illinois, Iowa, Minnesota, Nebraska, North Dakota, South Dakota, and Wisconsin. If realized, the area of corn planted in Nevada and Washington will be the largest on record, while Connecticut, Massachusetts, Pennsylvania, and Rhode Island will be the smallest on record.

Soybean growers intend to plant 84.7 million acres in 2026, up 4% from last year. Acreage increases from last year of 300,000 or more are expected in Arkansas, Iowa, Kansas, Mississippi, Nebraska, South Dakota, and Wisconsin. Record high acreage is expected in Wisconsin.

The Prospective Plantings report provides the first official, survey-based estimates of U.S. farmers' 2026 planting intentions. NASS acreage estimates are based on surveys conducted during the first two weeks of March from a sample of nearly 74,000 farm operators across the nation. Other key findings in the report are:

All wheat planted area for 2026 is estimated at 43.8 million acres, down 3% from 2025.

Winter wheat planted area, at 32.4 million acres, is down 2% from both the previous estimate and from last year.

Area planted to other spring wheat for 2026 is expected to total

9.42 million acres, down 6% from 2025.

Durum wheat planted is expected to total 1.95 million acres for 2026, down 11% from last year.

All cotton planted area for 2026 is expected to total 9.64 million acres, up 4% compared to last year.

Today, NASS also released the quarterly Grain Stocks report to provide estimates of on-farm and off-farm stocks as of March 1. Key findings in that report include:

Corn stocks totaled 9.02 billion bushels, up 11% from the same time last year. On-farm corn stocks were up 21% from a year ago, while off-farm stocks were down 2%.

Soybeans stored totaled 2.10 billion bushels, up 10% from March 1, 2025. On-farm soybean stocks were up 3% from a year ago, while off-farm stocks were up 16%.

All wheat stored totaled 1.30 billion bushels, up 5% from a year ago. On-farm all wheat stocks were down 3% from last year, while off-farm stocks were up 8%.

Durum wheat stored totaled 46.5 million bushels, up 21% from March 1, 2025. On-farm Durum stocks were up 40% from a year ago, while off-farm stocks of Durum wheat were down 4%.

The Prospective Plantings, Grain Stocks, and all other NASS reports are available online at [www.nass.usda.gov](http://www.nass.usda.gov).

The Spring Data Users' Meeting will be held on April 22, 2026, from 1 – 4:30 p.m. CST. This meeting will be held in-person in Kansas City, MO and virtually on Zoom. It is free and open to the public. Registration is required to attend.

## FEATURES

**8 Ranching with wolves:** Three decades after the reintroduction of gray wolves (*Canis lupus*) in central Idaho and Yellowstone (1995–1996), they now inhabit much of northeastern California. In 2011, the first wolf was documented in California, and the first confirmed pack established in 2015. Since then, wolf populations have expanded in both number and range. In the most recent California Department of Fish and Wildlife report from December 2025, there are nine active packs in the state, the most southern in Tulare County.



8

**10 KIOTI Expands CS30 Series with New ROPS Models:** Kioti Tractor, a division of Daedong-USA, Inc., has expanded its CS30 Series of sub-compact tractors with the addition of two new ROPS models: the CS2230 and CS2530. Earlier this year, Kioti made a splash with the launch of the CS2530 cab model, featuring the industry's first factory-installed climate-controlled cab and class-leading torque. Now, the new models deliver open-air versatility, along with the power and performance operators expect from Kioti.



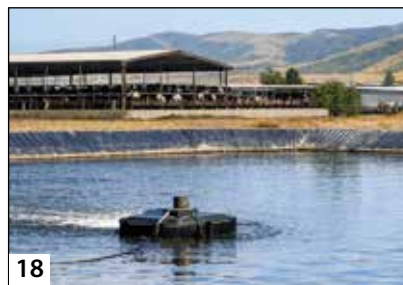
10

**16 Dogs with Jobs: Pups go on Pest Patrol as Rodenticides Phase Out.** JJ is a rodent detection dog. For seven years, the yellow Labrador retriever has lent his nose to Working Dogs for Conservation, an international environmental nonprofit. In addition to tracking rare or invasive species on natural landscapes, the organization trains rescue pups to perform integrated pest management in manmade environments.



16

**18 UC Cooperative Extension and UC Davis Exploring Quicker Measurement of Dairy Lagoon Water Nitrogen** - Farm advisors from UC Cooperative Extension covering the entire San Joaquin Valley, where most of California dairies are located, are collaborating with a UC Davis nutrient specialist to research faster ways to measure how much nitrogen (N) is in dairy lagoon water. The project is supported by the California Dairy Research Foundation and local dairy producers.



18

**20 Tomato Industry: Taking Steps to Stop Spread of Parasitic Weed. Equipment Cleaning Could Prevent Branched Broomrape, Help Growers.** California's processing tomato industry for the first time this past harvest season agreed to voluntary equipment cleaning and notification guidelines to prevent the spread of branched broomrape, a parasitic weed that attaches to roots and sucks out key nutrients.

On The Cover

LS Tractor

See Page 23 for your  
LS Tractor Dealer

[lstractorusa.com](http://lstractorusa.com)

## ADVERTISER INDEX

Case IH Tractor Company	
Linder Equipment Co .....	30
N&S Tractor .....	30
Sonsray Machinery .....	30
Wilkinson International .....	30
Gould Auction & Appraisal Co .....	9
Kioti Tractor Company	
American Loan Masters .....	11
Exeter Mercantile .....	11
San Joaquin Tractor Co.....	11
Trailer Superstore .....	11
Kubota Tractor Corporation	
Dolk Tractor Co.....	15
Garton Tractor, Inc.....	15
Linder Equipment Co.....	15
Pioneer Equipment Co .....	15
Lasco Lighting Weeder .....	5
Linder Equipment Co .....	13
LS Tractor Company	
Lane Tractor Sales Inc .....	23
Simply Country .....	23
Tractor City Inc .....	23
Valley Forklift Inc .....	23
Mulrooney Auction Co .....	24
New Holland Tractor Company	
Coastal Tractor Co .....	26
Dolk Tractor Co.....	26
Garton Tractor, Inc.....	26
N&S Tractor .....	26
N&S Tractor .....	2
Precision Air Systems, Inc .....	32
Smith Welding & Machine Shop .....	9
Sonsray Machinery .....	24
Synthetic Grass Solutions .....	19
Taylor Ag Equipment Appraisals.....	24



## International Agri-Center® Opens RFP for On-Site Hotel Development

*Expanding guest services to support long-term campus growth*

The International Agri-Center® has issued a formal Request for Proposals (RFP) seeking qualified developers to design, build, and operate a full-service hotel on its Tulare campus. This initiative aims to provide much-needed on-site accommodations for the thousands of guests who attend the Agri-Center's events and exhibitions each year.

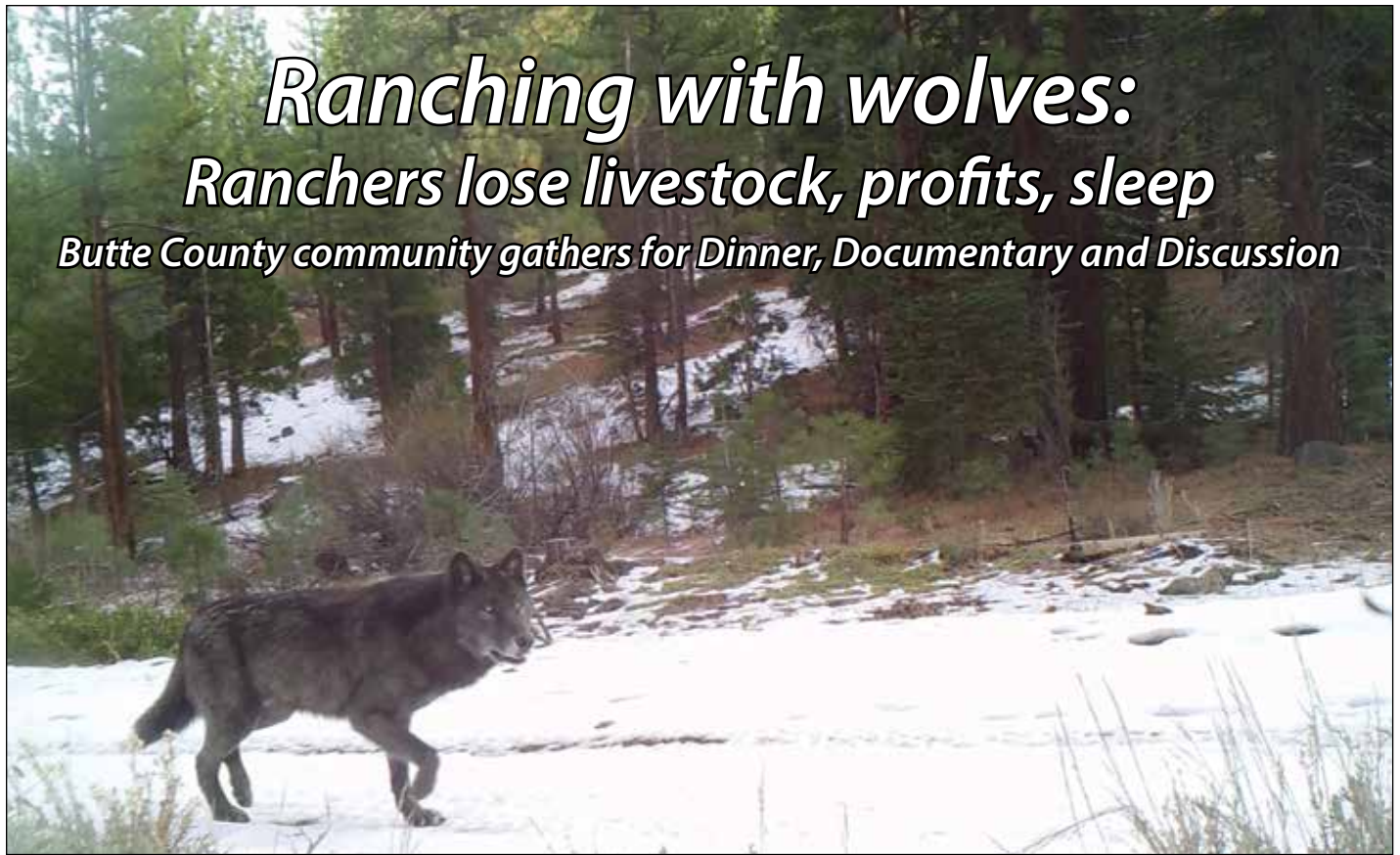
*"We are excited to take this next step in growing our campus" said Jerry Sinift, CEO of the International Agri-Center® "An on-site hotel will allow us to better serve our guests, exhibitors, and partners as a premier destination for events."*

Proposals are being solicited from experienced developers with a strong track record in hotel management. Submissions will be evaluated based on design quality, financial feasibility, and alignment with the Agri-Center's strategic vision.

**Learn more and view the RFP at [InternationalAgriCenter.com](http://InternationalAgriCenter.com).**

### RFP SNAPSHOT

- Full-service hotel project
- On-site lodging for events
- Proven developer experience
- Financial viability essential
- Details at [InternationalAgriCenter.com](http://InternationalAgriCenter.com)



# *Ranching with wolves: Ranchers lose livestock, profits, sleep*

*Butte County community gathers for Dinner, Documentary and Discussion*

*By Tracy Schohr*

*University of California Cooperative Extension livestock and natural resources advisor in Plumas, Sierra and Butte counties*

Three decades after the reintroduction of gray wolves (*Canis lupus*) in central Idaho and Yellowstone (1995–1996), they now inhabit much of northeastern California. In 2011, the first wolf was documented in California, and the first confirmed pack established in 2015. Since then, wolf populations have expanded in both number and range. In the most recent California Department of Fish and Wildlife report from December 2025, there are nine active packs in the state, the most southern in Tulare County.

Gray wolves remain protected under both federal and California Endangered Species Acts. For many people, unaware of the impacts to livestock producers, the growing wolf populations signal a conservation success.

"This is a full-blown crisis in many of our rural communities," said Wade Crowfoot, California's Natural Resources Secretary, during Assembly Committee on Water, Parks and Wildlife hearing in January on predators.

To bridge the gap, California State University, Chico professor Kasey DeAtley collaborated with University of California Cooperative Extension to host "Ranching with Wolves: Dinner, Documentary and Discussion" to bring together students, ranchers, researchers, local leaders and community members for a real conversation about wolf cohabitation in working landscapes. The dinner for guests was sponsored by the Butte County Cattlemen's Association.

"As wolves continue to expand across the state, the impacts on ranching operations are increasing," said Kyle Daley, rancher and president of the Butte County Cattlemen's

Association. "We proudly sponsored this event to create a space to share firsthand accounts of the economic impacts to public safety to boots-on-the-ground realities on ranching with wolves."

More than 100 attendees enjoyed a BBQ beef sandwich dinner and watched the PBS documentary "American Grown: My Job Depends on Ag - Sierra Valley Wolves." This documentary provides an in-depth look at the complex challenges associated with the return of wolves to California. It highlights the experiences of Sierra Valley ranchers with the Beyem Seyo Wolf Pack during the summer of 2025 as they strived to protect their livestock and the sustainability of their livelihoods.

Following the documentary, guests engaged in a thoughtful dialogue with Paul Roen, Sierra Valley Ranch manager and Sierra County Supervisor; Sierra County Sheriff Mike Fisher and Tina Saitone, professor of Cooperative Extension at the University of California, Davis. The panelists provided additional context to the documentary, answered questions from the audience about wolf management strategies, and dove deep into the costs of ranching with wolves.

There is an emotional divide on wolves, but this event created a venue for information sharing and thoughtful conversations. The students listened intently.

"It is essential that we continue communicating how wolves are affecting ranchers — economically, mentally and through the injustice of limited restitution. We have insufficient tools to protect livestock and prevent wolves from becoming habituated to cattle," said Roen.

Reflecting on the challenges associated with the Beyem Seyo pack, which killed dozens of Roen's cattle last summer,

*See Ranching with wolves: next page*

## Ranching with wolves:

continued from previous page  
the rancher added, "I spent last summer up at all hours of the night working with California Department of Fish and Wildlife game wardens and biologists, along with U.S. Department of Agriculture - Wildlife Services, trying to stop the wolves. This is the reality that needs to be shared. Ranchers have tried — and we continue to try — but we need more options and meaningful support."

Fisher discussed the broader community impacts of wolves, highlighting the stress and strain he witnessed firsthand last summer as ranchers dealt with daily cow deaths. Fisher described the toll of sleepless nights and constant vigilance, underscoring the human and social dimensions of wolf conflicts in rural communities.

Saitone, an agricultural economist, shared her research on impacts from direct losses from cows killed and injured along with indirect impacts to cows, including reduced weight gain, lower conception rates and other stress-related consequences on cattle herd health.

"Ranchers in California are bearing a very real and substantial economic burden as wolf populations expand across the state," said Saitone. "Quantifying these losses — not just the cattle that are killed, but the indirect effects on reproduction, weaning weights and herd behavior — is essential to having an honest conversation about coexistence. Without that data, it is impossible to design policies that accurately reflect the true cost to the ranching families and rural communities that are living with wolves every day."

Wolves are changing the profitability of livestock producers, changing the way ranchers use the landscape and changing families who live on the land. The Dinner, Documentary and Discussion was held to foster awareness among community members and inform policymakers. It is essential to continue sharing economic research on the impacts of wolves on livestock producers, along with the social and cultural lived experiences of those directly affected by wolves.

This event was an extremely impactful experience for many Chico State students, offering a rare opportunity to engage directly with industry professionals and real-time perspectives on a complex issue.

"I am grateful for the chance students, policy makers and producers had to broaden understanding of this complex topic while also fostering meaningful connections within the field. Opportunities like this — featuring current information, experienced producers and open dialogue — are invaluable in preparing students for future careers," said co-host DeAtley.

She extends appreciation to the documentary filmmaker, panelists and the Butte County Cattlemen's Associations for their support in making this experience possible.

For more information on the topic and to watch the PBS documentary "American Grown: My Job Depends on Ag - Sierra Valley Wolves," parts 1 and 2, visit <https://link.ucanr.edu/wolves>.

UC Agriculture and Natural Resources brings UC information and practices to all 58 California counties. Through research and Cooperative Extension in agriculture, natural resources, economic growth, nutrition and youth development, our mission is to improve the lives of all Californians. Learn more at [ucanr.edu](http://ucanr.edu) and support our work at [donate.ucanr.edu](http://donate.ucanr.edu).

## GOULD AUCTION & Appraisal Co. LLC



*Integrity, Experience, Results*

### UPCOMING AUCTIONS

**SATURDAY June 13th, 2026 9:00 AM**

Inspection: Friday June 12th, 9:00 to 4:00 PM

Location: 6200 Price Way, Bakersfield, CA 93308

#### Accepting Consignments Now

Early Listing: 50+ Vehicles, 2 Case Backhoes 580E & 580L, Big Tex Trailer, Sullair 85CM Air Compressor, Portable Sand Blaster, Oxygen & Acetylene Cages, Caterpillar BH 150 3pt Backhoe Att., 3pt Sweeper, 6"-16" Pipeline Clamps, Barton Temp & Flow Gauges, Sockets to 1" Drive Torque Wrenches, Power Tools, Pipe Plugs, Pipe Cutters & Threaders, Expecting Office Trailer

#### Special Offsite Live Estate Auction In Riverlakes Estate

**SATURDAY, May 2, 2026, 10:00 AM**

Inspection: Friday, May 1, 2026, 10:00 AM to 2:00 PM

**High End Beautiful Furnishings, All Goes**

See Webpage For More Information: [www.gouldauction.com](http://www.gouldauction.com)

**LIVE & ONLINE BIDDING at [www.Proxibid.com](http://www.Proxibid.com)**  
**Proxibid handling all online bids for AUCTIONS**

6200 Price Way, Bakersfield, CA 93308

Office (661) 587-3123 • Jerry (661) 333-3040

[www.Gouldauction.com](http://www.Gouldauction.com) • Email: [Gouldhitch@aol.com](mailto:Gouldhitch@aol.com)

Bond #CA MS150-49-03 USA MS2892233

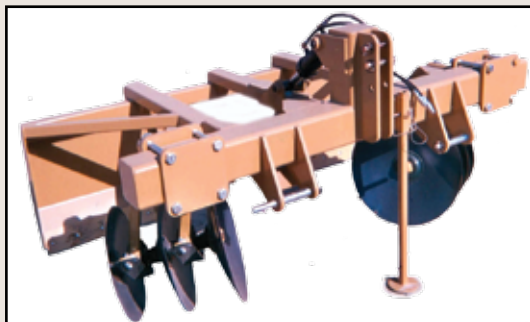
## Smith Welding & Machine Shop

179 So. 10th Avenue

Hanford, CA 93230

Phone (559) 584-8652

### Ridger-Blocker



[www.smithweldingshop.com](http://www.smithweldingshop.com)



New CS2230 and CS2530 bring open-air versatility to the KIOTI CS30 lineup

## KIOTI Expands CS30 Series with New ROPS Models

KIOTI Tractor, a division of Daedong-USA, Inc., has expanded its CS30 Series of sub-compact tractors with the addition of two new ROPS models: the CS2230 and CS2530. Earlier this year, KIOTI made a splash with the launch of the CS2530 cab model, featuring the industry's first factory-installed climate-controlled cab and class-leading torque. Now, the new models deliver open-air versatility, along with the power and performance operators expect from KIOTI.

“The initial release of the CS30 was a game changer, delivering unparalleled comfort and performance,” said Joel Hicks, product line manager for tractors at KIOTI. “Now, we’re building on that success by providing even more options. No matter the task or property size, KIOTI offers a proven, powerful solution built to meet our customer’s needs.”

**New ROPS Models Deliver a Smooth Operator Experience**  
The CS2230 and CS2530 ROPS tractors expand the CS30 Series lineup with reliable, open-platform versatility. Featuring a responsive hydrostatic transmission for smooth speed control, a rear differential lock, four-wheel drive, and wet disc brakes, these models deliver precise handling across a variety of applications. The illuminated digital instrument panel gives operators critical information at a glance, including vehicle status, warnings, and TMS alerts.

Designed with operator comfort in mind, the ROPS models feature an ergonomic control layout with an illuminated in-

strument panel for improved visibility in low light. A premium, high-back seat enhances comfort during long work periods, ensuring a smooth and productive experience.

**Built with Power and Performance Top of Mind**

The ROPS tractors incorporate the proven power and performance features found on the CS30 Cab model. To maximize efficiency, both models include mid and rear PTOs with an optional quick-connect system to support a wide range of implements, as well as a Category 1 three-point hitch offering a 700 lb. lift capacity.

Designed for operators who need reliable performance in a compact footprint, the CS2530 delivers 24.5 horsepower and 51.63 lb.-ft. of class-leading torque, while the CS2230 provides 21horsepower and 46.47 lb.-ft.

**Compatible with KIOTI Connect**

The new models are compatible with the KIOTI Connect smart connected service app. This application gives operators access to a user-friendly dashboard that displays key data and updates related to their machines. Operators benefit from real-time alerts and performance data to simplify operations, anticipate issues before they occur, and maintain high productivity. KIOTI Connect is available for download on the App Store and Google Play, with its full range of features free for the first three years.

**RX40**  
SERIES

**66-73 HP**  
UTILITY TRACTORS



**0%** UP TO **60** MONTHS **OR** **\$4000** UP TO **CASH BACK\* (T-L)**  
FINANCING\* MONTHS CASH BACK\* (T-L)

**0%** *Financing on all KIOTI Tractors,  
Compact Loaders, UTVs and ZTRs.\**

**Call Your Local KIOTI Dealer Today!**

**ACTON**  
TRAILER SUPERSTORE  
(661) 233-1166

**DELANO**  
SAN JOAQUIN TRACTOR  
(661) 725-2531

**RIDGECREST**  
AMERICAN LOAN MASTERS  
(760)-308-1018

**BAKERSFIELD**  
SAN JOAQUIN TRACTOR  
(661) 324-4517

**EXETER**  
EXETER MERCANTILE  
(559) 592-2121

**WASCO**  
SAN JOAQUIN TRACTOR  
(661) 758-3053

***KIOTI.com***

\*Offer available April 1, 2026 -- June 30, 2026. Rebates and/or financing based on the purchase of eligible equipment defined in promotional program. Pricing and rebates in US dollars. Additional fees including, but not limited to, taxes, freight, setup and delivery charges may apply. Financing must be through DCL or Sheffield using one of the available financing options. Financing is subject to credit approval. Customers must take delivery prior to the end of the program period. Some customers will not qualify. Some restrictions apply. Offer available on new equipment only. Prior purchases are not eligible. Offer subject to change without notice. Offer valid only at participating Dealers. See your dealer for details. © 2026 Kioti Tractor Company a Division of Daedong USA, Inc.

# CDEA Farm to School Grant

## “Sparks” support of women in agriculture

### – expanding local citrus into school meals

CDEA's California Farm to School Incubator Grant Program supports small to midsize farms while increasing healthy food choices for school meals. And in California, where women outpace the nation by making up 38% of producers, that includes supporting women in agriculture.

For example, Karina Sparks, owner and operator of citrus farm Sparks Ranch in Yolo County, received funding in the 2023/24 grant cycle. Via the farm to school grant, Sparks has increased sales of her high-quality, delicious oranges directly to local school districts – which supports her small, local farm and provides meaningful opportunities for women in agriculture.

Sparks utilized CDEA Farm to School grant funding to build a larger sorting and storage shed, making it easier and more efficient to move and pack citrus, hire additional crew members and expand local citrus offerings into school meal programs.

While her farm to school project is only halfway complete, Sparks noted that “Progress so far has been remarkable – time savings and increased efficiency have made a real difference.”

*“School districts are my most valued customers, not only because of the volume they purchase, but because of how much students enjoy the oranges,” Sparks said. “Hearing that they love the fruit—and often come back for seconds—is the best reward, especially during winter when vitamin C matters most.”*

With 2026 being celebrated as International Year of the Woman Farmer, Sparks noted that being a woman in agriculture means “breaking barriers. For a long time, agriculture has been a male-dominated field, but women are steadily making their mark. Every year, I see more women stepping into leadership roles across the farming industry. We are proving

that there should be no gender barriers in agriculture. As a woman farmer, the shoes I had to step into at the beginning felt very large. But over time, I found my path. After 15 years of running a farm, those shoes no longer feel oversized – I’ve grown into them and am now filling my own shoes. The journey has been incredibly fulfilling. While there is still progress to be made, I’m confident we will continue moving forward quickly.”

The advice Sparks would give to the next generation of women in agriculture is simple: “Don’t give up and work hard. Farming can be challenging, but persistence and dedication will take you far. At the same time, remember to slow down and appreciate the beauty of nature around you. Take time to smell the air, feel the soil and enjoy the land you’re working with. And don’t be afraid or too shy to ask for help. Agriculture is built on community. There is always support to be found in your neighbors, friends and the people around you. Working together and learning from others is one of the greatest strengths in this industry.”

Sparks finds pride and joy in farming.

“I’m proud to be a woman in farming, and I’m proud to keep the Sparks name going strong,” she added. “When I first took over the ranch, I honestly had no idea what I was doing. It truly took a village – support from my community, neighbors, friends and mentors – to help me learn and grow. Now, I can confidently say: I can do this. And not only am I doing it, I’m loving every minute of it.”

For more information about Sparks Ranch and its citrus, please visit <https://www.facebook.com/Sparks-RanchOranges> or contact Karina Sparks at [Sparksoranges@gmail.com](mailto:Sparksoranges@gmail.com). Please visit the CDEA Farm to School Program webpage for more information and to engage in CDEA's statewide Farm to School Network.

# California Farm Equipment

California Farm Equipment is Published Monthly. The Publisher does not assume responsibility for statements by Advertisers, Editorial or for Products advertised in California Farm Equipment Magazine. The Publisher and Advertisers are not responsible for erroneous statements, ad misrepresentation or typographical errors. Copyright 2025. All rights reserved by California Farm Equipment.

Publisher Joe L. Neyer III  
Associate Publisher Mona L. Neyer

Subscription Rate: Anywhere in the U.S. is \$18 for one year and \$36 for three years, payable in advance.

Website: [californiafarmequipment.com](http://californiafarmequipment.com)  
Email: [info@cfemag.com](mailto:info@cfemag.com)

Postmaster: Please send “Address Service Requested” corrections to California Farm Equipment, Post Office Box 1128, Visalia, CA 93279

Telephone: 559-627-2182

## CONTACTS

Editorial Office  
California Farm Equipment  
P.O. Box 1128, Visalia, CA 93279  
Telephone (559) 627-2182. Website at: [www.californiafarmequipment.com](http://www.californiafarmequipment.com)

Advertising  
Contact the Advertising Department at 559-627-2182 or email: [info@cfemag.com](mailto:info@cfemag.com)

Subscriptions  
For a one year subscription \$18.00 and for a three year subscription \$36.00. Out of the country one year \$75.00 except for Canada and Mexico \$50.00.

For all inquiries, send to California Farm Equipment, P.O. Box 1128, Visalia, CA 93279, call 559-627-2182 or email us at [info@cfemag.com](mailto:info@cfemag.com)

## International Agri-Center Announces Megan Lausten as Assistant General Manager



Megan Lausten, International Agri-Center Assistant General Manager

The International Agri-Center is pleased to announce the appointment of Megan Lausten as Assistant General Manager. In this new role, Lausten will continue to lead the organization's marketing efforts while taking on expanded leadership responsibilities across the organization.

As Assistant General Manager, Lausten will oversee the day-to-day operations of the International Agri-Center, supporting the organization's ongoing programs and events, including World Ag Expo®. Her dual role reflects her continued commitment to advancing the Agri-Center's mission.

Lausten has been with the International Agri-Center for four years and has played a key role in shaping the organization's marketing and communications efforts. A Tulare native and graduate of California State University, Fresno, she brings a strong connection to the local community and agricultural industry.

"We're excited to see Megan step into this expanded role," said Jerry Sinift, CEO of the International Agri-Center. "She is a well-respected and trusted member of our team, and we look forward to her continued leadership and contributions across all our programs."

Lausten resides in Tulare with her husband and two children and is actively involved in the local community.

**Come and see our huge inventory of Case IH and Kubota tractors**  
*Low Rate Financing Available and or Lease Options!*

**READY FOR RENT OR PURCHASE**  
*from 25 hp to 620 hp*

**Also, for rent many implements to choose from!**

**Linder EQUIPMENT CO.**  
*SERVING AGRICULTURE SINCE 1884*

311 E. Kern Avenue  
 Tulare, California 93274

*Serving Agriculture Since 1884*

**CASE IH**  
 AGRICULTURE



**(559) 685-5000** [www.linderequipmentkubota.com](http://www.linderequipmentkubota.com)

**HARTNELL COLLEGE**  
 AGRICULTURAL BUSINESS AND TECHNOLOGY INSTITUTE

**21ST ANNUAL**  
**THE WESTERN FOOD SAFETY CONFERENCE**  
 presented by HARTNELL COLLEGE

**ADVANCING A CULTURE OF FOOD SAFETY EXCELLENCE**

**SAVE-THE-DATE | MAY 6-7, 2026 | SHERWOOD HALL, SALINAS**

# Your Vision. Our Mission. Let's Build it Together. Apply for a \$50,000 Kubota Hometown Proud® Grant Today

To continue its longstanding commitment to strengthening hometowns where Kubota customers and dealers live and work, Kubota Tractor Corporation is now accepting applications for its annual Kubota Hometown Proud® grant program. Nonprofits with projects where Kubota equipment can make a difference are encouraged to apply until May 7, 2026, for a chance to receive a grant valued at \$50,000 (\$25,000 cash and a \$25,000 Kubota equipment voucher). Ten grant recipients, one from each of Kubota's 10 operating districts across the country, will be awarded this year.

"In 2026, we are once again building on the millions in funding and equipment grants we've awarded to a range of organizations over the past five years," said Alex Woods, President, Kubota Tractor Corporation. "Kubota's grant program has helped fund many meaningful projects, all led by passionate local dealers working together with nonprofit leaders to make a difference in hometowns across the country. We look forward to meeting our next group of grant winners to continue this important tradition of giving back to our communities."

Any nonprofit with a project where Kubota funding and equipment can positively impact a community is encouraged to apply. Past grant winner examples include renovating fairgrounds, rodeo arenas and barns; expanding Ag education centers and farm incubator programs; building new parks, trails, green spaces, and community gardens; and revamping youth sports fields and other public recreation spaces. Whatever the community project and vision, Kubota's mission is to help build it, together.

## Enter Today in Three Easy Steps

Any authorized employee or officer with the authority to act on behalf of the registered 501(c)(3) nonprofit organization can enter. Follow three easy steps to submit your application today:

- Step One: Visit [KubotaHometownProud.com](https://KubotaHometownProud.com) until May 7, 2026.

- Step Two: Fill out the short application form, including information on your organization, your community project in need, and how Kubota equipment can help you reach your goals.

- Step Three: Upload a short video, then click 'enter.' That's it!

## Kubota Invests in Our Neighborhoods

Kubota's nationwide footprint includes 1,100 dealers



who take immense pride in supporting the communities in which they live and work. The Kubota Hometown Proud grant program provides local dealers with the opportunity to engage with their communities through projects that make an impact for their neighbors. The program is open to nonprofits with a community project located within a 50-mile radius of an authorized Kubota dealer, and includes Alaska, Hawaii and, new for 2026, Puerto Rico.

After the application period closes on Thursday, May 7, Kubota will review all submitted applications and select 10 winners — one from each of the company's 10 operating districts — to receive a grant of \$25,000 and a \$25,000 Kubota equipment voucher. Grant recipients will be announced in September. Organizations who have entered before can enter again; however, previous winners are not eligible.

Additionally, consumers nationwide will have their own opportunity to participate in the Kubota Hometown Proud Win & Give Sweepstakes launching on May 8. Individuals can enter for a chance to win either a Kubota zero-turn mower or a BX tractor. No purchase required.

For more information on the Kubota Hometown Proud grant program and the Kubota Hometown Proud Win & Give Sweepstakes, visit [kubotausa.com/hometown-proud/rules](https://kubotausa.com/hometown-proud/rules).

# Big Dreams Deserve Big Savings



**SELECT COMPACT TRACTORS**

**0%** APR AVAILABLE

— OR —

SAVE UP TO **\$5,500\*** ON SELECT EQUIPMENT

**FRESNO**

Pioneer Equipment Co.  
559-486-7580

**MERCED**

Garton Tractor, Inc.  
209-726-4600

**MODESTO**

Garton Tractor, Inc.  
209-538-0911

**NEWMAN**

Garton Tractor, Inc.  
209-862-3760

**REEDLEY**

Pioneer Equipment Co.  
559-638-9201

**RIO VISTA**

Dolk Tractor Company  
707-374-6438

**SANTA ROSA**

Garton Tractor, Inc.  
707-586-1790

**STOCKTON**

Garton Tractor Inc.  
209-948-5401

**TULARE**

Linder Equipment Co.  
559-685-5000

**TURLOCK**

Garton Tractor, Inc.  
209-632-3931 • 877-872-2867

**UKIAH**

Garton Tractor, Inc.  
707-468-5880



KubotaUSA.com



\*Based on EDA/UCC Data from 01/01/2020 - 12/31/2024 for sales of new tractors 0-200 Hp in the USA. © Kubota Tractor Corporation, 2026. \$0 Down, 0% A.P.R. financing for up to 36 months on purchases of new Kubota LX2620 CAB equipment dealers' in-stock inventory is available to qualified purchasers through Kubota Credit Corporation, U.S.A.; subject to credit approval. Example: 36 monthly payments of \$27.78 per \$1,000 financed. Customer instant rebate of \$5,500 on Kubota LX2620 CAB available with cash or standard rate financing. Offers expire 06/30/26. Terms subject to change. For complete warranty, disclaimer, safety, incentive offer and product information, consult your Dealer or KubotaUSA.com.

# Dogs with Jobs:

## Pups Go on Pest Patrol as Rodenticides Phase Out

UC Cooperative Extension explores how trained dogs help detect and control rodent populations.



Vick and JJ gave a demonstration of their teamwork during the 2026 Vertebrate Pest Conference in San Diego. Photo by Rob Padilla

### Pest Management in Transition

- California bans key rodenticides (AB 1298, AB 1322, AB 2552)
- Researchers explore canine detection alternatives
- Dogs pinpoint rodent activity early
- Field trials continue through 2026

JJ has a uniform to keep himself safe on the job. As a consummate professional, he always wears a collar. A harness fits snugly around his shoulders. When he treads on dangerous terrain, he sports protective booties on all four paws.

JJ is a rodent detection dog. For seven years, the yellow Labrador retriever has lent his nose to Working Dogs for Conservation, an international environmental nonprofit. In addition to tracking rare or invasive species on natural landscapes, the organization trains rescue pups to perform integrated pest management in manmade environments.

"The dogs give us insights into odor-based information beyond the limitations of what we can see," said Mark Vick, JJ's trainer and assistant director of programs with the organization. "A dog's superpower is how they interpret and communicate that infor-

***"A dog's superpower is how they interpret and communicate odor-based information."***

*Mark Vick, Working Dogs for Conservation*

mation in a way we can actually use."

JJ's capabilities were recently on full display during the 2026 Vertebrate Pest Conference in Southern California. Conference attendees were invited to visit a working farm owned by Mellano & Company, a multigenerational flower-growing business in coastal San Diego County, to watch JJ in action.

Mike Mellano owns the farm with his family. He was candid with the crowd – the farm has a mouse problem. The rodents chew on drip irrigation tape in the fields and cut into the farm's profits.

"Once they chew on it, the integrity

of the system is shot. We have leaks. Uniformity is gone. We have excess water. Poor crop performance. Poor yields," Mellano said. "Vertebrate pest control is a big issue and it's getting bigger."

As a long-time collaborator with UC Agriculture and Natural Resources and chair of the UC President's Advisory Commission on Agriculture and Natural Resources, Mellano is enthusiastic about testing new pest management practices. He often conducts research alongside UC Cooperative Extension human-wildlife interactions advisor Niamh Quinn, who organized the field trip.

"I'm a scientist; I love science," said Mellano, who holds a Ph.D. in plant pathology. "Working with UC researchers allows us to try new ideas that can improve pest management while protecting the environment."

When Quinn pitched the idea of bringing a detection dog to the farm,

Mellano was game. Over the last five years, California passed AB 1298, AB 1322 and AB 2552, which banned second-generation anticoagulant rodenticides to reduce unintended poisoning of wildlife. But rodents aren't going away on their own, so Mellano is shopping for other management strategies.

Dogs are a solution worth studying, Quinn says. By identifying rodent activity before infestations become obvious, dogs can help land managers rely less heavily on toxic measures.

"We know that dogs can do amazing things, right? We've seen them sniff out cancer and COVID and bombs," Quinn said. "Dogs have potential."

Vick and JJ began their demonstration at the entrance of a bungalow on the farm property. As they traced the building's perimeter, JJ locked in on his task.

"It's all the subtle cues," said Pete Coppolillo, executive director of

Working Dogs for Conservation. "As you watch JJ work, you may see his nose go up and then go down. His ears perk up or his tail just starts to wag."

Vick knows how to read his pup partner after all their years working together. Briefly, the dog stopped in front of a wall, bringing Vick's attention to a small hole leading into the building. But, based on JJ's signal, that trail was cold.

"Rodents leave complex odor signatures as they move through landscapes and structures. There was odor here... but right now it's not an active entry," Vick said.

Based on JJ's behavior, Vick believes rodents previously used that access point to get into the building and then holed up with resources inside. The demo ended there, leaving attendees and JJ begging for more.

"He wants to go inside the building," Vick said, restraining JJ from climbing the stairs and continuing his work.

After attendees left, JJ got his way. His nose led the team to boxes of materials stacked in the corner of the room – bingo.

"After moving those items, we were able to access the source," Vick said.

Behind the clutter, they found an oversized opening around a pipe where rodents had chewed the gap larger, along with a nearby hole in the wall. Disturbed insulation and hollowed-out wall space suggested this was a primary nesting and access area.

"At that point, it became very clear how they're moving through the structure and where management efforts



*JJ uses his sense of smell to detect odors in the manmade environment, like farms. Photo by Caroline Champlin*

should be focused," Vick said.

Following the demo, attendees buzzed with questions. They were eager to learn more about the four-legged pest management expert – and pet him.

"Field demonstrations like this are a hallmark of Cooperative Extension's approach to problem solving," said Quinn, the event organizer. "I was trying to open people's eyes to alternative rodent management."

According to Quinn, rat detection isn't the only career path available to modern canines. In the last few years, she's also noticed the proliferation of rat abatement companies, which train dogs to catch and kill pests. (One of Quinn's contacts has dispatched 300 rats in a single night using two dogs, and that's apparently on the low end of the spectrum.)

While "ratter" dogs have been around for centuries, Quinn believes public pressure to limit rodenticides is giving working dogs a new relevance.

"It's an old school thing that's becoming a new school thing," Quinn said.

Based on her experience with Vick, JJ and other pest-management professionals, dog-based pest control could have a future in the pest management industry. Still, Quinn wants to know more before fully endorsing the practice. She's currently pursuing grants to further study their efficacy.

"Our integrated pest management toolbox is just becoming more and more restricted with legislation surrounding pesticide in California. It's important to explore the viability of alternative tools," Quinn said. "But we need to know if they work."



*Vick is careful to protect his furry work partner, equipping the dog with glow-in-the-dark gear and booties when necessary. Photo by Caroline Champlin*

# UC Cooperative Extension and UC Davis

## Exploring Quicker Measurement of Dairy Lagoon Water Nitrogen

Farm advisors from UC Cooperative Extension covering the entire San Joaquin Valley, where most of California dairies are located, are collaborating with a UC Davis nutrient specialist to research faster ways to measure how much nitrogen (N) is in dairy lagoon water. The project is supported by the California Dairy Research Foundation and local dairy producers,

### Why Lagoon Water Matters

Dairy farmers often irrigate their forage crops with fresh water blended with lagoon water. Lagoons are storage ponds on dairies that hold dairy process wastewater and contain water used for cleaning and cooling cows as well as flushing barns where the animals excrete urine and manure. Irrigating with lagoon water is like fertilizing because many plant nutrients are found in lagoon water, and N is abundant. This is good because N is the most limiting plant growth and development nutrient. However, there are challenges with using lagoon water as a crop nutrient source.

### Understanding Nitrogen Availability

- Not all nitrogen in lagoon water is immediately available for plant uptake. Typically one-third to two-thirds of the nitrogen is in organic form, while the remainder is ammonium, a mineral form plants can absorb right away. Organic nitrogen must first be decomposed by soil microbes and converted to ammonium before plants can use it.



- Electrical conductivity (EC)
- Turbidity
- Specific gravity
- Solids content
- Ammonium concentration



*Nick Clark, UC Cooperative Extension advisor - working on nitrogen measurement in dairy lagoon water.*

### The Challenge of Measurement

Currently, there are no known direct measurements of N in lagoon water beyond what a laboratory can measure. Despite local ag labs providing highly accurate analyses with a relatively short turnaround, samples of lagoon blended irrigation water analyzed at a lab only allow the farmer to know how much N was applied to their crop a few days after it was applied. It may have been too little, just the right amount, or more than planned. We think this can be improved.

### Toward Real-Time Nitrogen Estimates

Farmers need to know how much nitrogen is being applied as irrigation occurs. Real-time data would allow them to adjust lagoon blends to meet target nitrogen applications.

**Preliminary results show electrical conductivity strongly correlates with total nitrogen in lagoons.**

**For more information about this project contact the author, Nick Clark, by email: [neclark@ucanr.edu](mailto:neclark@ucanr.edu).**

**“STOP MUST READ” \* MASSIVE SAVINGS!!!**

**IF YOU HAVE 10K, 15K, 20K SQ. FT. OR MORE - GET YOUR SYNTHETIC GRASS INSTALLED FOR \$7.50 SQ. FT. INSTALLATION, LABOR AND TAX INCLUDED.**

**WE'VE BEEN TAKING CARE OF PROPERTIES SINCE 2010**

- FARMERS
- RANCHERS
- COMMERCIAL
- RESIDENTIAL

**Synthetic Grass**



**A Lawn You Can Be Proud Of!**  
From a family owned company you can depend on.

**Stay WATER SMART**

**STOP WASTING WATER! GO SYNTHETIC!**



**We Specialize in Commercial & Residential Properties**

**SGS Synthetic Grass Solutions**  
*Locally and Family Owned Since 2010!*

**Call us. We can help.**  
**559-917-6901**

visit us online at [www.SGSfresno.com](http://www.SGSfresno.com)

# Tomato Industry: Taking Steps to Stop Spread of Parasitic Weed

## Equipment Cleaning Could Prevent Branched Broomrape, Help Growers



Branched broomrape growing among tomatoes in a research field. (Jael Mackendorf / UC Davis)

by Emily C. Dooley

California's processing tomato industry for the first time this past harvest season agreed to voluntary equipment cleaning and notification guidelines to prevent the spread of branched broomrape, a parasitic weed that attaches to roots and sucks out key nutrients.

The weed's tiny seeds can be smaller than finely ground spices, survive dormant in soils for decades and be carried by wind, footwear and other methods. Its resurgence in 2017 in Yolo County threatens the productivity of an industry that brought in \$1.6 billion in 2024.

The University of California, Davis, in conjunction with industry, federal authorities and state regulators, is playing a key research role in the battle against broomrape by testing and developing in-field sanitation guidelines for tomato harvesters and other field equipment. Researchers across campus are also evaluating herbicide treatments, weeding methods, ways to detect the weed and disrupt its ability to affect crops.

### Harvesting with conditions

Under former state quarantine rules, any broomrape detection would require a field be destroyed before harvest. With

the new guidelines, growers may harvest if they adhere to certain management practices, including equipment cleaning standards developed by the California Broomrape Board, formed in 2024 to advise the California Department of Food and Agriculture.

"There's 1,000 acres that are actually reported but we know from observation that it's probably much greater than that," said Cassandra Swett, a UC Davis plant pathologist who is leading efforts to sanitize field equipment. "There are two main goals: reduce the economic impacts of broomrape on growers in the affected region by allowing them to harvest, and on the other side, keep broomrape out of the regions that do not currently have it."

In 2025, nearly all growers and processors in the state signed on to compliance agreements regarding cleaning and notification, and this year the California Department of Food and Agriculture is expected to require them, said Zach Bagley, managing director of the California Tomato Research Institute, which has been working on broomrape control issues since 2018.

"It's overall seen as a positive in the industry," Bagley said. "The driver for sanitation is not just the biology of this

weed and the reality in the field, but it also has regulatory components."

Also, this year, all processing tomato canneries in the state have agreed to build on-site wash stations or set up cleaning protocols for the 2026 season to help stop the spread from harvest trailers.

"We can never have a 100% guarantee that we're not moving seed, but we can do our best to take it off in the fields where we know we have a problem, and that's where the research comes in," said Bagley, whose organization helps fund related UC Davis research.

### Effectiveness and timing key

Swett, fabricators with the Department of Biological and Agricultural Engineering, a Cooperative Extension farm advisor and others in the industry are working on prototypes of sanitizing equipment, evaluating spray nozzle size, water pressure, aim and other factors.

Cleaning is no simple task, and it consists of removing debris with physical cleaning and sanitizing. The right combination of debris removal followed by a sanitizer can substantially reduce dispersal risk, Swett said.

The goal is to reach under and around tractors and remove mud, soil, plant material or anything that can collect and carry broomrape seeds. Some versions of these prototype cleaning systems are in the field and others roll under the equipment.

"These machines are running 24 hours a day," Swett said. "Taking that downtime to clean the machine is really messing up harvest schedules."

At present, cleaning a tomato harvester can take hours, but industry is hoping it can get to less than an hour to meet labor, costs and logistics needs. "One of the drivers of this work has been, 'How can we make it faster but still be acceptable at the end of the day?'" Bagley said. Agricultural engineer Dan Frank and crop advisor Patricia Lazicki have developed and are testing prototypes of automated systems that can improve cleaning time

*See Tomato Industry page 26*



# Subscribe to California Farm Equipment

Digital - FREE Subscription • Print - Paid Subscription

California Farm Equipment (CFEM) has assisted in the "Growth" of the Agriculture Business for over 40 years. The structure of the magazine has proven, over the years to be of great value in the agriculture world. Each issue contains small to large equipment for sale, new products, up-to-date editorial, research and technology updates, along with agribusiness news. CFEM is published monthly. Subscribe now and get each issued delivered to your mailbox or your digital issue delivered to your inbox monthly.



## Subscription - Print

- Annual Subscription \$18.00     3 Year Subscription \$36.00
  - 12 issues delivered to your mailbox monthly.    36 Issues delivered to your mailbox monthly. (One year free)
- (Check the subscription you want to subscribe to)  
International Subscribers call (559) 627-2182

### Billing Information

First Name \_\_\_\_\_

Last Name \_\_\_\_\_

Email \_\_\_\_\_

Address \_\_\_\_\_

City \_\_\_\_\_ State \_\_\_\_\_ Zip Code \_\_\_\_\_

### Card Details

Visa     MasterCard     American Express

Cardholder Name \_\_\_\_\_

Account Number \_\_\_\_\_

Expiration Date \_\_\_\_ / \_\_\_\_

CVV \_\_\_\_\_ Zip Code \_\_\_\_\_

\*We do not share or sell your information.



## Sign Up for our FREE Digital Subscription

Delivered to your Inbox monthly.

First Name \_\_\_\_\_

Last Name \_\_\_\_\_

Email \_\_\_\_\_

Website: [www.cfemag.com](http://www.cfemag.com)  
Email: [info@cfemag.com](mailto:info@cfemag.com)

\*We do not share or sell your information.

Mail form to: CFEM • P.O. Box 1128 • Visalia, CA 93279 or Email to: [info@cfemag.com](mailto:info@cfemag.com)



By Kimberly Steele

### Top Implements and Attachments

Buying a tractor is only the beginning. The real versatility of a compact or utility tractor comes from the implements you pair with it. With the right tools, a single machine can handle landscaping, property maintenance, agriculture, and material-handling tasks with ease.

LS Tractor offers a wide range of durable implements designed to help operators get more from their equipment. Whether you're managing acreage, maintaining a farm, or caring for rural property, these attachments dramatically expand what your tractor can do.

Below are five essential implements every tractor owner should consider — plus an honorable mention for those who face heavy winter weather.

#### 1. **Front-End Loader**

A front-end loader is one of the most versatile and widely used tractor attachments. Mounted to the tractor's frame, it allows operators to scoop, lift, and move loose materials quickly and safely.

Loaders reduce manual labor, improve precision, and dramatically increase productivity for property owners and

businesses alike.

- Common uses include:
- Moving soil, gravel, or sand
- Transporting hay bales and feed
- Clearing debris or rubble
- Spreading mulch or stone
- Removing snow
- Handling manure, fertilizer, or topsoil

#### 2. **Rotary Cutter or Finishing Mower**

Vegetation management is a constant task for many landowners, and choosing the right mower makes all the difference.

##### **Rotary Cutter**

Built for rough, overgrown areas such as fields, pastures, and roadsides. Ideal for tall grass, thick weeds, brush, and small saplings.

##### **Finishing Mower**

Designed for well-maintained lawns and properties requiring a clean, manicured appearance. Perfect for parks, estates, and large lawns.

Together, these implements cover everything from rugged pastures to polished landscapes.

#### 3. **Box Blade**

One of the most versatile grading tools available, the box blade excels at leveling, spreading, and reshaping soil or gravel.

Adjustable scarifiers break up compacted ground, while the box carries and distributes material evenly.

Typical applications:

- Maintaining gravel driveways
- Leveling uneven terrain
- Filling ruts or potholes
- Backfilling trenches
- Spreading gravel, soil, or sand
- Creating drainage paths

#### 4. **Rake Grapple or Root Grapple**

Grapple attachments turn a tractor into a powerful land-clearing machine.

##### **Rake Grapple**

Curved tines pull up roots, vines, and small stumps while sifting out soil — ideal for clearing overgrown land and reclaiming fence lines.

##### **Root Grapple**

Clamping jaws grip and lift heavy, uneven materials such as logs, brush piles, and boulders. Perfect for debris removal and material handling.

Many operators eventually use both styles for maximum versatility.

#### 5. **Rotary Tiller**

A rotary tiller is essential for preparing soil for planting. Rotating tines break up and aerate the ground, improving soil structure and promoting healthy root growth.

- Common uses:
- Preparing gardens and crop fields
- Mixing compost or fertilizer
- Breaking up compacted soil
- Controlling weeds
- Managing crop residue

##### Honorable Mention: **Snow Blower**

For regions with heavy winter weather, a snow blower attachment is invaluable. Unlike plows that push snow aside, snow blowers lift and throw snow clear of the path — ideal for deep or icy conditions

Used for:

- Clearing driveways and sidewalks
- Maintaining farm lanes
- Keeping access routes open during storms

Used for:

##### Get More from Your Tractor

The right attachment can turn a compact or utility tractor into a true multi-purpose machine. From mowing fields and grading driveways to clearing land and preparing soil, these implements help operators work with greater efficiency and precision.

LS Tractor offers a full lineup of rugged implements designed for demanding jobs. Choosing the right tools ensures you get the most from your tractor investment.

# LS Tractor

Start Blue. Stay Blue.

# MT774

## NEW LS FAMILY LOOK

- Sleek, aggressive exterior design with new deep sky-blue paint and silver rims
- Redesigned hood allows for improved engine performance and serviceability
- LED lamps



Start Blue. Stay Blue. Stop in at your local dealer!

Earlimart, CA  
**VALLEY FORKLIFT INC**  
559-268-6285

Fresno, CA  
**VALLEY FORKLIFT INC**  
800-959-5532

Grass Valley, CA  
**SIMPLY COUNTRY**  
530-273-3886

Modesto, CA  
**VALLEY FORKLIFT INC**  
209-846-6960

Stockton, CA  
**VALLEY FORKLIFT INC**  
209-933-0206

Auburn, CA  
**TRACTOR CITY INC**  
530-820-3011

West Sacramento, CA  
**VALLEY FORKLIFT INC**  
916-371-6165

Los Molinos, CA  
**LANE TRACTOR SALES INC**  
530-384-1016

Sacramento, CA  
**TRACTOR CITY INC**  
916-309-4146

## APPRAISALS

### Taylor AG Equip. Appraisals

ASAA Certified 34 Years  
 ASFMRA 2014  
 USPAP & Valuation  
 Retail AG Sales 40 + Years  
**916-806-7431 David**

## FARM EQUIPMENT

**1500 Gallon Water Tank Trailer.** Has good running Honda pump. Good condition. \$2500 cash. Call 559-284-5940

**2000 F250 SUPER DUTY V8.** Has 7.3L engine, 331,000 miles, 2 new batteries \$5,500.00  
 Call 559-740-8444



**SMITH WELDING AND MACHINE SHOP**  
 Row Crop Equipment  
 Open Field Equipment  
 Orchard Equipment  
 Border and Irrigation Equipment  
 For more information call  
**(559) 584-8652**



**Donahue Swather Trailer CS266**  
 2 new tires. Fits Swather tire min. 8' max 11'. Adjustable caster set for Hesston 6555 at 82" \$1000 Call 916-425-4763.

## RENTALS

**RENTALS:** We Rent Farm Equipment. Linder Equipment Co., Tulare, CA. 559-685-5000.

## PACK MACHINE

- 16 pack stations
  - 2 variable speed belts (20 in. x 35 ft.)
  - attached 8 ft. rotating tub
  - and exit conveyors
- .....\$23,000.00  
 Call  
**530-570-7211**



**PUMA 200 RENTAL #ZGES03031 200 PTO HP, FRT: 380/85R30 RT: 380/90R46 w/ duals, RW: 1,100 LBS, GPS ready, 3 Electronic remotes, Warranty: only warranty 6/21/21 warranty end date or 5000 hrs. Whichever comes first, Hours 3511 .....Call for Price**  
**PLUS More Rentals to Choose From**  
**LINDER EQUIPMENT CO.**  
**559-685-5000**



**2023 Bobcat CT5550.....\$43,000**



**1-844-766-7729**



**2022 TYM T1104, 100 HP to 174 HP**  
 .....\$54,500.  
**San Joaquin Tractor Co.**  
 Bakersfield, California 93305  
**Phone:(661) 705-6133**

## WANTED

**FORD BACKHOE** for a Ford 4500, 450 Industrial 2000 old gas Skiploader w/bucket.  
**FORD NAA JUBILEE 1953** Flathead Tractor.  
**INTERNATIONAL TD9** Bulldozer, has B&E side/arms, front pump, angle blade.  
**CAT D4 7U SERIES** (1948 TO 1960) Bulldozer w/Cat hydraulic system. For Cat D2, D4 Tractors; BE-GE rear pump.  
**Tim at 661.733.7677 • 661.492.9057**  
 (Palmdale, Antelope Valley)

**Gould Auction & Appraisal Co. LLC**  
**661.587.3123**  
**GouldAuction.com**  
 gouldhitch@aol.com

Integrity  
 ~~~~~  
 Experience  
 ~~~~~  
 Results



## AUCTIONEERS & APPRAISERS

Office 209-366-0600 Cell 209-481-2200

info@mulrooneyauction.com • www.mulrooneyauction.com

## SPRING SALE!



**2023 AGCO LT85, 40 HP to 99 HP Tractors**  
 .....\$35,000\*



**2025 BAD BOY MAVERICK 4800, Zero Turn Lawn Mowers..... \$6,800\***



**2020 ANDERSON 590HS Bale Wrappers**  
 ..... \$19,900\*



**1-888-246-0892**

www.nstractor.com

QUALITY EQUIPMENT & SUPERIOR  
 CUSTOMER SERVICE

\*Plus tax, shipping, etc.

## WANTED - MISC.

**CAT D4 7U Series** wide gauge w/CAT bulldozer blade, CAT front pump & hydraulic cylinder.  
**Speedstar 71** Cable tool Drill Rig w/6" bit tool string & bailor.  
**Colt/Fairbanks** - Morse semi-modern 1 cyl. engine w/condensor radiator/fan on top of hopper, 6 hp.  
**Massey Ferguson 4WD** Skiploader.  
**Tim at 661.733.7677**  
 (Palmdale)

## Don't Forget to Pray!

- Pray for your people and your products.
- Pray for your grounds and your gear.

If you would like prayer support  
 Call Kevin  
**925-765-4849**

**(2) LILISTON 6200 EDIBLE BEAN HARVESTERS 2010**  
 Liliston Edible Bean Harvester. Refurbished in Good Working Condition. \$13,000.00 each.  
 Reasonable Offers Will Be Considered.  
 Call (209) 614-9486



# JM ENTERPRISES

FOR ALL YOUR PRINTING NEEDS



- BROCHURES
- FORMS
- BUSINESS CARDS
- LABELS
- DIRECT MAIL
- LETTERHEAD
- ENVELOPES
- SIGNS/BANNERS

LETTERHEAD

INVOICE



GIVE US A CALL  
**(559) 627-2182**

## Stop By and See Your Local New Holland Dealer Today!

### FAIRFIELD

GARTON TRACTOR INC.  
707-425-9545

### FRESNO

GARTON TRACTOR INC.  
(Kuckenbecker Tractor)  
559-485-9090

### KING CITY

COASTAL TRACTOR CO.  
831-385-5401

### MADERA

GARTON TRACTOR INC.  
(Kuckenbecker Tractor)  
559-674-2496

### MERCED

N&S TRACTOR CO.  
209-383-5888

### MODESTO

GARTON TRACTOR INC.  
209-538-0911

### NEWMAN

GARTON TRACTOR INC.  
209-862-3760

### PASO ROBLES

COASTAL TRACTOR CO.  
805-239-5772

### RIO VISTA

DOLK TRACTOR CO.  
707-374-6438

### SALINAS

COASTAL TRACTOR CO.  
831-757-4101

### SANTA ROSA

GARTON TRACTOR INC.  
707-586-1790

### STOCKTON

GARTON TRACTOR INC.  
209-948-5401

### STRATFORD

N&S TRACTOR CO.  
559-947-3301

### TULARE

GARTON TRACTOR INC.  
559-686-0054

### TURLOCK

GARTON TRACTOR INC.  
209-632-3931

### UKIAH

GARTON TRACTOR INC.  
707-468-5880

**Solutions for a changing world!**



Dirt, mud and plant debris found on a tomato harvester. (UC Davis)

## Tomato Industry

continued from page 20  
and coverage, Swett said.

### A better picture

Before the broomrape compliance agreements, it was difficult to determine how many of the 185,000 to 250,000 tomato production acres might be infected because reporting would mean losing a

crop and the money invested on planting, irrigation and other efforts with no hope of insurance covering the loss.

The agreements have changed that, said Brad Hanson, a professor of Cooperative Extension in plant sciences who is an ad hoc member of the Broomrape Control Board.

“With the risk of crop quarantine off the table for growers under the compliance agreements, we can talk about the problem out in the open,” Hanson said. “The daylighting part of this has been really helpful because for the last five years, we’ve been really in the dark.”

Now it’s about working toward a common solution, said Neil McRoberts, a UC Davis plant pathologist who researches ways to support plant health and regulations. He is also a non-voting member of the board and familiar with pests that have caused widespread damage to other crops. With broomrape, the attention is focused before the weed has spread widely across fields in California and potentially to other crops like carrots, potato and sunflower.

“I’m hopeful because the issues are being faced very early on,” he said.

**0% DEALS<sup>1</sup>**  
**OR BIG CASH BACK<sup>2</sup>**



## Roll in for big savings on utility tractors.

Save now with your choice of 0% financing<sup>1</sup> deals or pocket big cash back<sup>2</sup> offers on select utility tractors, like the WORKMASTER™ Series II and PowerStar™ Series lineup. These reliable New Holland tractors deliver up to 100 PTO HP and plenty of versatility to check off all the jobs around your farm or jobsite. Get rolling with big savings—and big performance—from New Holland.

**Hurry, offers end June 30, 2026.**

**Stop in today for complete details or visit [nhoffers.com](http://nhoffers.com)**



**CNH** CAPITAL

<sup>1</sup>For commercial use only. Customer participation subject to credit qualification and approval by CNH Industrial Capital America LLC. See your participating New Holland dealer for details and eligibility requirements. Eligible equipment limited to dealer inventory in stock. Previous retail sales are not eligible. Down payment may be required. Offer good through June 30, 2026. Not all customers or applicants may qualify for this rate or term. CNH Industrial Capital America LLC. standard terms and conditions will apply. This transaction will be unconditionally interest free. Taxes, freight, setup, delivery, additional options or attachments not included in suggested retail price. Offer subject to change or cancellation without notice. <sup>2</sup>For commercial use only. See your participating New Holland dealer for details and eligibility requirements. Cash back applied at time of sale. Offer is nontransferable. Offer ends June 30, 2026. Offer subject to change or cancellation without notice. ©2026 CNH Industrial America LLC. All rights reserved. CNH Industrial Capital and New Holland are trademarks registered in the United States and many other countries, owned by or licensed to CNH Industrial N.V., its subsidiaries or affiliates.

### Auctions/Appraisals

- Gould Auction**  
.....www.gouldauction.com
- Mulrooney Auction**  
.....www.mulrooneyauction.com
- Taylor Ag Equipment Appraisals**  
www.linkedin.com/in/david-g-taylor-  
b4226a19

### Equipment

- Agco Corporation**  
.....www.agcocorp.com
- American Loan Masters**  
.....www.pjtrailers.com/stores/  
american-loan-masters/
- Bobcat Central**  
.....www.bobcatcentral.com
- Case Corporation**  
.....www.caseih.com
- Coastal Tractor Company**  
.....www.coastaltractor.com
- Dolk Tractor Company**  
.....www.dolktractorcompany.com
- Donahue Corporation**  
.....www.donahuetrailers.com
- Empire Agriculture**  
.....www.empireag.com
- Exeter Mercantile**  
.....www.exetermercantile.com
- Garton Tractor Inc**  
.....www.gartontractor.com
- Grasshopper**  
.....www.grasshoppermower.com
- Hanford Equipment Company**  
.....www.hanfordequipmentco.com
- Kubota Corporation**  
.....www.kubotausa.com
- LAFORGE Systems Inc**  
.....www.laforgegroup.com
- Lane Tractor Sales Inc**  
.....www.lanetractor.com
- Linder Equipment**  
.....www.linderequipment.com
- Live Earth**  
.....www.liveearth.com
- Massey Ferguson**  
.....www.masseyferguson.com/en\_us
- N & S Tractor** .....www.nstractor.com
- New Holland**  
agriculture.newholland.com/en-us/nar

- Pacific Ag Rentals**  
.....www.pacificagrentals.com
- Peltzer Enterprises Inc**  
.....www.peltzerenterprises.com
- Pioneer Equipment**  
.....www.pioneerequipment.com
- Plantel Nurseries**  
.....www.plantelnurseries.com
- Powerland Equipment**  
.....www.powerlandequipment.com
- Precision Air Systems Inc**  
.....www.precisionairsystems.com
- Quality Machinery**  
.....quality-mc.com
- Quinn Company**  
.....www.quinncompany.com
- Rubicon Equipment**  
.....www.rubiconequipment.com
- San Joaquin Tractor**  
.....www.sanjoaquintractor.com
- Sonsray Machinery**  
.....www.sonsraymachinery.com
- South Kern Machinery**  
.....www.kernmachinery.com
- Tractor City Inc**  
.....www.tractorcityinc.com
- Trailer Superstore**  
.....www.pjtrailers.com/stores/  
trailer-super-store/
- Valley Forklift Inc**  
.....www.valleyforklift.com
- Valley Tractor**  
.....www.valleytractor.com
- Wilkinson International**  
.....www.wilkinsoninternational.com
- Manufacturers**
- McIlroy Equipment**  
.....www.mcilroyequipment.com
- Nikkel Iron Works**  
.....www.nikkelironworks.com
- Smith Welding & Machine Shop**  
.....www.smithweldingshop.com
- Farm Shows**
- Antique Farm Show**  
.....www.antiquefarmshow.org
- Colusa Farm Show**  
.....www.colusafairgrounds.com/  
colusa-farm-show/
- World Ag Expo**  
.....www.worldagexpo.com/

### Federal Government

- Army Corps of Engineers**  
.....www.nwpl.sec.usace.army.mil
- Bureau of Land Management**  
.....www.blm.gov
- Farm Service Agency**  
.....www.fsa.usda.gov
- National Weather Service**  
.....www.weather.gov/

### Organizations

- Almond Board of California**  
.....www.almonds.com
- California Assn. of Winegrape Growers**  
.....www.cawg.org
- California Cattlemen's Association**  
.....www.calcattlemen.org
- California Dairy Research Foundation**  
.....www.cdprf.org
- California Farmland Trust**  
.....www.cafarmtrust.org
- California Poultry Federation**  
.....www.cpif.org
- California Raisins**  
.....www.calraisins.org
- California Rangeland Trust**  
.....www.rangelandtrust.org
- California Strawberries**  
.....www.californiastrawberries.com
- Associated Equipment Distributors**  
.....www.aednet.org/

### Real Estate

- Valley Real Estate**  
.....www.valleyre.net

### State Government

- Department of Agriculture**  
.....www.usda.gov
- Department of Conservation**  
.....www.consrv.ca.gov
- Department of Food and Agriculture**  
.....www.cdffa.ca.gov
- Department of Pesticide Regulation**  
.....www.cdpr.ca.gov
- Department of Water Resources**  
.....www.dwr.water.ca.gov

### Syntentic Grass

- Synthetic Grass Solutions**  
.....www.SGSfresno.com

### Weather

- National Weather Service**  
.....www.weather.gov/

If you would like to have your website listed here contact us at:

Website: [californiafarmequipment.com](http://californiafarmequipment.com)

Telephone: (559) 627-2182

E-mail: [info@cfemag.com](mailto:info@cfemag.com)

# FREE CLASSIFIED ADS



**REACH YOUR  
AUDIENCE EASILY**

**FREE AD  
POSTING**

◆ **DISCOVER THE POWER OF FREE CLASSIFIEDS** ◆

**VISIT OUR WEBSITE TODAY: [www.cfemag.com](http://www.cfemag.com)**

# California launches new strategy to protect The agriculture and food sectors from climate change Building Climate Resilience in California Agriculture

The California Department of Food and Agriculture (CDFA) announces the release of the Climate Resilience Strategy for California Agriculture (Strategy). The document provides a comprehensive overview of state actions designed to help the agricultural community prepare for, respond to, and thrive under the many conditions imposed by climate change, from uncertainty about water supply and drought to extreme weather events, wildfires, flooding and more.

“The Strategy celebrates the importance of what agriculture does for California every day and also acknowledges the tremendous challenges that California agriculture is facing today,” said CDFA Secretary Karen Ross. “This Strategy focuses on how we bring together all that we’ve learned about climate smart agriculture and the ability for agriculture to be a part of the climate solution.”

California farmers and ranchers are facing an increasingly difficult landscape, including climate change effects as well as perennial challenges like the cost of inputs and other economic uncertainties. The state is dedicated to supporting our agricultural industry and food systems, and the Climate Resilience Strategy for California Agriculture is a key step in ensuring that the state is fostering resilience in the agricultural sector.

Californians might be most aware of climate impacts on agriculture like the historic drought of 2020-2023 that led to the fallowing of over 750,000 acres and estimated economic losses of \$3 billion. But other effects critical to agriculture are also compounded by our changing climate: extreme weather events such as flooding, freezes and heat waves can spell disaster for crops and livestock across the state; and wildfires – whether in urban regions like Los Angeles or rural areas like California’s valleys and foothills – can imperil farms outright, while the smoke and wind can pose a threat to workers and even damage crops, as it did with grapes in Wine Country in 2020. Less obvious but still impactful are climate-driven increases in pest pressure that cost growers and the state millions to combat.

The sheer scale of California agricul-

ture means there’s a lot at risk – but it also means this sector can meaningfully contribute to curbing climate change. The Strategy builds upon California’s Ag Vision 2030, which prioritizes “fostering climate smart, resilient, and regenerative food systems” that can help mitigate climate change, improve soil health, restore biodiversity, enhance ecosystems, and contribute to human health.

This strategy highlights climate-related agricultural challenges, policies, and actions across State government; lays out areas of opportunity for further action; explores connections with local, statewide, federal, and private-sector initiatives; and provides Equity Principles that help state agencies ensure that their programs are accessible to California farmers.

It includes important context, strategies and actions, and implementation plans to support California farmers, ranchers, farmworkers, and agricultural communities and ensure California agriculture thrives in the faces of climate change and is an integral part of the solution.

## **The Strategy is organized under three pillars:**

- *Support a Thriving and Resilient Food Sector*
  - *Protect Natural Systems Critical to Agriculture*
  - *Encourage Resilient Agriculture Practices*
- Each pillar has Key Objectives representing a unique aspect in the agricultural system, such as animal health, pest management, or supporting agricultural workforce. These Key Objective have associated strategies and actions that align under one or more of the four overarching goals:
- *Provide Health and Environmental Benefits*
  - *Improve the Bottom Line for Farmers*
  - *Reduce Greenhouse Gas Emissions*
  - *Support Economic Development*

The Strategy was developed with input from farmers and ranchers, nonprofits, technical experts, state agencies, and more to ensure that the key objectives, goals, strategies, and actions reflect stakeholder input and needs.

Visit our website to learn more about the Strategy at <https://www.cdfa.ca.gov/climate/>.

## See Your Local Case IH Dealer Today!

### BAKERSFIELD

Sonsray Machinery  
661-327-1641

### FIVE POINTS

Sonsray Machinery  
559-884-2431

### FRESNO

Sonsray Machinery  
559-834-2277

### SALINAS

Sonsray Machinery  
831-240-0378

### STOCKTON

N&S Tractor Co.  
209-944-5500

### STRATFORD

N&S Tractor Co.  
559-947-3301

### TULARE

Linder Equipment Co  
559-685-5000

### WILLOWS

N&S Tractor Co.  
530-934-3382

### WOODLAND

Wilkinson International  
530-662-7373



## THE NEW FARMALL® MEDIUM UTILITY C SERIES FULL POWER. FULL COMFORT. FULL FEATURES.

How do you build on the hard-working performance of the legendary Farmall® Medium Utility C Series? You start by updating the styling and upsizing features like the front axle, hydraulic power, gross vehicle weight, and rear lift capacity. These deluxe utility tractors offer both 12-speed Power Shuttle and 24-speed Hi-Lo transmissions — so you're more than equipped to tackle livestock duties, hay operations, and loader work. For added comfort and a better driving experience, you get updated controls, greater visibility, ActiveClutch II™ brake to clutch, and soft-start PTO. Want more precision farming tech? The new model versions offer factory-installed track-and-trace fleet management and ISOBUS compatible implement control.

For more information visit [caseih.com](http://caseih.com) or contact your local Case IH dealer.



All rights reserved. Case IH is a trademark registered in the United States and many other countries, owned by or licensed to CNH Industrial N.V., its subsidiaries or affiliates. [www.caseih.com](http://www.caseih.com)

# CASE IH

# SPRING DEALS!

## Compressor-Welder-Generators

- Industrial grade gas or diesel engine
- Industrial grade welder/generator
- Heavy duty industrial compressor pump
- Belt guard after cooler
- Battery mounted and wired
- Electric start engine
- Vibration pads
- Stainless steel flex lines
- Automatic tank drain
- Freight pre-paid in lower 48 states and southern Canada



Reciprocating  
Compressor  
Welder  
Generator



Rotary Screw  
Compressor • Welder • Generator



**Give us a call. We can help you find the equipment to meet your needs, no matter how big, small, or rugged the job may be.**

# PRECISION AIR SYSTEMS, INC.

661.631.2295 Toll Free 866.270.5520

JACOB "JAKE" DUNCAN  
[jduncan@precisionairsystems.com](mailto:jduncan@precisionairsystems.com)

TOM DUNCAN  
[tduncan@precisionairsystems.com](mailto:tduncan@precisionairsystems.com)