



THE HUB

FAMILY RESOURCE CENTRE

2022-2023 ANNUAL REPORT



**Healthy Children, Healthy Families,
Healthy Communities.**

Mission

The Hub Family Resource Centre works to strengthen capacities and encourage the best possible development of children and families in Wood Buffalo.

Vision

Healthy children, healthy families, healthy communities.

TABLE OF CONTENTS

EXECUTIVE DIRECTOR REPORT	 1
MESSAGE FROM THE PRESIDENT	 3
PROGRAM OUTCOMES	 4
THE HUB TEAM	 5
BOARD OF DIRECTORS	 6
AUDITORS REPORT & EXPENSES	 7
FUNDERS, SPONSORS, & DONORS	 9
CAPITAL CAMPAIGN	 11

EXECUTIVE DIRECTOR REPORT

Board Members, Staff, Partners, and Stakeholders:

It is with gratitude that I reflect on the 2022-2023 year with The Hub Family Resource Centre.

As we all know, the Hub is a pillar of support and connection for families in our community. Our commitment to the well-being of families, the growth of children, and the development of healthier communities has remained unwavering since our inception in 2003.

Program Highlights:

Over the past year, the Hub has made significant strides in our mission. Our comprehensive services touched the lives of more than 1000 families this year and have been instrumental in helping them overcome challenges and thrive. Some of the highlights from the past year include:

- 1. Early Childhood Development:** Our programs catering to various stages of early child development continue to reach countless families. From postpartum support to toddler playgroups, we are actively nurturing child development and fostering lifelong health.
- 2. Parenting Supports:** The Hub continues to be a trusted resource for parents and caregivers seeking guidance and support. Our workshops, classes, and support groups have empowered parents to build stronger relationships with their children and help them reach their potential.
- 3. Family Access Services:** We continue to offer Safe Visitation and Safe Exchange services for families who have experienced family violence. This remains an integral service for those who are in high conflict co-parenting relationships and those who have experienced custody and access issues.
- 4. Community Engagement:** We continue to engage with families throughout Wood Buffalo through The Hub on Wheels program, reaching families in remote areas of the region. This mobile initiative has allowed us to increase equitable access to critical programming.
- 5. Partnerships:** Our collaboration with the Wood Buffalo Family Resource Network partners at the YMCA and WJS Canada has strengthened our ability to provide comprehensive services. Together, we are working towards a shared vision of fostering resilient children and families.

I would also like to thank our numerous other partners who help make this work possible including, but not limited to, the United Way Fort McMurray and Wood Buffalo, Alberta Health Services, the Nistawoyou Association Friendship Centre, Athabasca Tribal Council, Aunties Within Reach, Athabasca Chipewyan First Nation, the Fort McKay Family Centre, Fort McMurray First Nation 468, Chipewyan Prairie First Nation, and the Regional Recreation Corporation of Wood Buffalo.





Financial Overview:

Our financial health remains stable due to the continued support of our funders, sponsors, and donors. We have diligently managed our resources to ensure the sustainability of our programs and services. I would like to extend our gratitude to all those who have contributed.

The *It Takes a Village Campaign* was a tremendous success thanks to our many donors and sponsors. This campaign allowed us to design the Hub's new space to meet the needs of our community, including adding a sensory room, Indigenous corner, and numerous imaginative play spaces.

Challenges and Resilience:

While we celebrate our successes, we must acknowledge the challenges we've faced in the past year. Despite the continued decrease in funding and organizational capacity, we see the need for services rising steadily. In the 2022-2023 fiscal year, we served 47 per cent more unique individuals than the 2021-2022 year, and we are well on our way to surpassing that number in the upcoming year.

Looking Ahead:

As we move forward, the Hub remains committed to its core values and mission. We are actively exploring ways to expand our reach and enhance our impact. This includes seeking sustainable funding options, exploring new partnerships, and conducting outreach to identify emerging needs in our community.

In conclusion, I want to express my heartfelt gratitude to our dedicated staff, the board of directors, our funding partners, volunteers, and the families we serve. Your unwavering support and dedication have been the driving force behind the Hub's success.

I look forward to continuing to work together to foster *Healthy Children, Healthy Families, and Healthy Communities*. With your support, we will build a brighter future for the families of Wood Buffalo.

Sincerely,

Samantha Simpson
Board President



MESSAGE FROM THE PRESIDENT

As I embark on my second year as board chair, I am filled with immense pride and gratitude for the dedicated efforts of our exceptional staff and volunteers at The Hub Family Resource Centre. Together, they have tirelessly worked to provide invaluable programs and services to families in the Regional Municipality of Wood Buffalo. I would also like to extend my heartfelt appreciation to the community, our invaluable partners, and our dedicated investors. Your unwavering support has made it possible for us to extend our reach to families in and around Fort McMurray.

The past year has been a whirlwind for us, primarily due to our capital campaign ***It Takes a Village to Raise a Child***. The resounding success of this campaign has allowed us to relocate to a more central location and create an optimized space to deliver our essential programs and services. This achievement, made possible through the support of our community and investors, coupled with the relentless efforts of our board of directors, has enabled our staff and volunteers to establish a warm and welcoming haven for families in Fort McMurray.

With our expanded facility, we are now able to accommodate a larger number of families participating in our programs and drop-in-play sessions. However, the growing demand for our services presents us with the challenge of doing more with limited resources.

I am delighted to announce that we recently completed our first successful casino event. As we eagerly anticipate the proceeds from this event, it is important to acknowledge that its success would not have been possible without the generous contributions of our volunteers, dedicated staff, and committed board members who generously offered their time and energy.

Our rural community programs, which resumed last year, remain a cornerstone of our mission. We recognize the ongoing need to support members of our rural community and are committed to sustaining the delivery of these vital programs. Currently, staffing and funding for these initiatives pose our primary challenges; however, our board of directors, in close collaboration with our executive director, are actively exploring solutions to address these challenges.

As we look ahead to the upcoming year, The Hub remains steadfast in its commitment to our community, staying true to our vision of ***Healthy Children, Healthy Families, and Healthy Communities***. Together, with your continued support, we will overcome challenges and continue making a meaningful difference in the lives of the families we serve.

Thank you for being an integral part of our journey. We look forward to another year of growth, impact, and community-building.

Sincerely,

Kate Buczulak
Board President



2022-2023 PROGRAM OUTCOMES



COMMUNITY

94%

Agree that because of the Hub programs they are less isolated.

90%

Agree they have more knowledge of community resources and how to access them.

92%

Agree that because of the Hub they have created positive connections with new people.



SUPPORTS

100%

of Primary Caregivers agree that because of Safe Visitation, they feel safer.

100%

of Exchange Caregivers agree that because of Safe Exchange their co-parenting conflict has decreased.



CHILD DEVELOPMENT

92%

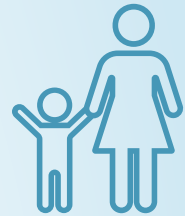
Agree they have more information on how to support their child's development.

100%

Agree that because of Hub programs their children have more opportunities to develop independence.

96%

Agree that because of Hub programs their children have the opportunity to engage in social-emotional learning.



CAREGIVER CAPACITY

100%

Agree that because of Hub programs they have more tools to encourage positive interactions with their children/teens.

100%

Agree that because of Hub programs they are more aware of how to foster their child/teen's healthy development.



THE HUB TEAM



**Alana
Hansen**



**Amiee
Reid**



**Ana
Oliveira**



**Cindy
Julaton**



**Crystal-Lee
Combdon**



**Frank
Power**



**Hilaryann
McCorrison**



**Julie
Penney**



**Katarina
Semacikova**



**Lauren
Odland**



**Maire
Castro**



**Maysie
Telan**



**Monique
Williston**



**Samantha
Simpson**



**Sierra
Budesheim**



**T.J.
Carabeo**

Past Staff: Adewunmi Odetundun, Becca Woodill, Cavell Griffiths-Blair, Jennifer Champion, Jibrán Hamayun, Magnifique Umutoni, Maira Khan, Melanie Wabano





BOARD OF DIRECTORS



Kate Buczulak
President



Jadene Spitzer
Vice President



Caileigh Rhind
Secretary



Amanda Stuart
Treasurer



Farhat Pervin
Director



Rhonda Blanchette
Director



Oliva Best
Director



THE HUB FAMILY RESOURCE CENTRE
Statement of Revenues and Expenditures
Year Ended March 31, 2023

	2023	2022
REVENUES		
Grants	\$ 928,759	\$ 947,779
Fundraising	63,794	43,132
Donations	14,178	11,493
	<u>1,006,731</u>	<u>1,002,404</u>
EXPENSES		
Salaries and benefits	627,489	682,446
Rent	171,805	161,555
Program development	27,897	11,112
Office	19,193	23,372
Computer network maintenance	17,808	17,914
Advertising and promotion	15,384	7,622
Materials	13,686	10,411
Insurance	13,353	11,339
Professional fees	12,813	12,081
Training	12,614	6,763
Utilities	10,926	10,516
Telephone	10,024	11,833
Amortization	9,462	11,803
Facility repair and maintenance	7,985	9,700
Photocopying	3,957	8,059
Vehicle	2,980	1,794
Fundraising expenses	1,110	6,459
Interest and bank charges	725	825
Repairs and maintenance	634	5,655
	<u>979,845</u>	<u>1,011,259</u>
EXCESS (DEFICIENCY) OF REVENUES OVER EXPENSES FROM OPERATIONS	<u>26,886</u>	<u>(8,855)</u>
OTHER INCOME		
Expense recoveries	23,193	-
Government assistance (Note 10)	-	10,655
	<u>23,193</u>	<u>10,655</u>
EXCESS (DEFICIENCY) OF REVENUES OVER EXPENSES	<u>\$ 50,079</u>	<u>\$ 1,800</u>



FINANCIAL STATEMENTS

THE HUB FAMILY RESOURCE CENTRE Statement of Financial Position March 31, 2023

	2023	2022
ASSETS		
CURRENT		
Cash (Note 6)	\$ 544,489	\$ 426,809
Goods and services tax receivable	7,574	3,635
Prepaid expenses	13,473	14,522
	565,536	444,966
PROPERTY AND EQUIPMENT (Note 4)	35,404	21,803
	\$ 600,940	\$ 466,769
LIABILITIES AND NET ASSETS		
CURRENT		
Accounts payable	\$ 63,932	\$ 44,309
Wages payable	37,938	34,584
Source deductions payable	6,863	7,199
Deferred revenue (Note 5)	223,602	162,151
Other payables (Note 9)	1,237	1,237
	333,572	249,480
NET ASSETS		
General fund	197,824	147,745
Board designated reserve fund (Note 7)	69,544	69,544
	267,368	217,289
	\$ 600,940	\$ 466,769
LEASE COMMITMENTS (Note 11)		



FUNDERS, SPONSORS, & DONORS

Core Funders & Sponsors:



Donors:

Amy Lynn Clarke
Charles Servandil
Daniel MacGilvray
Derrick Trottier
Gydabelle Murphy
Kevin Hendricks
Mark Wehmeyer

June Bug Sponsors:

Syncrude
Canadian Natural
TC Energy
Telus
Inter Pipeline
Finning
Birch Mountain
Enterprises and Fort
McKay Group of
Companies
Enbridge
CNOOC
Mix 103.7 (in kind)
West Jet
TD
Diversified
Gallo LLP
Complitzy (in kind)



The Hub has completely changed mine and my children's lives for the better. Even if it is something as small as the staff giving the parents reassurance that we are doing the right things with the children, that helps a great amount. The amount of love and support my family had received from the staff has been unmatched! We love The Hub!

~ Hub Parent



2023 CAPITAL CAMPAIGN

Our vision for a larger, more accessible space with enhanced play opportunities became a reality in the spring of 2023. Kick started with our ***It Takes A Village*** capital campaign, which launched in January 2023 and garnered heartfelt community support, raised \$13,665 from families, individuals, and small business. We were also able to secure \$85,000 in corporate sponsorship to sustain The Village and the new, custom play structures over the next five years.

Village Sponsors:



It Takes a Village Donors

Absolutely She
Aliona Panaid
Amanda Ward
Andrew & Lena Hudy
Andrusiv Family
Arjun Saran
Ashley Barrington
Ashley Coutts
Beau & Chloé
Benjamin Moore (in kind)
Budget Blinds (in kind)
Carole Cardinal
Christina Hynes
Cindy Julaton
Danica Osmond
Danielle Fowler
Danielle Moore
Deanna Hasselaar
Diane Michel
Elise Bancroft
Elizabeth Benner
Everly House
Farhat Pervin
Fernanda e Ana Julia
Dutra
Greg House
Grover & Harvey Arsenault
Heather Barrett
Heather McCann
Heather Warford
Heena Batra

Hope Moffatt
Irene Gida
Irene Tumbaga
Jack & Charlie Beaver
Jaden Hiscock
JaJeJi
Jamal e Fatima Rafat
Jamie Peters
Jazmine Roberge
Jenista Conway
Johanie Stpierre
Jordan Ratzlaff
Kate Buczulak
Kathryn MacDonald
Kaye-Lani Murphy
Kenneth Fulcher
Krystal Alexander
Letty Lumhod
Lilibeth Sarinas
Lori Gould
Maddie Amyotte
Mark and Rhonda
Blanchette
Maysie & Cristy
Melissa Redden
Monica Raike
Nancy Smith
Narinder Pal Si
Nicole Ramm
Norie Sanchez
Olivia & Kari-Ann

Rachel Drapeau
Rahma Hassan
Rhonda McKay
Rivers Casino Lounge
Staff
Robyn Sucilan
Samantha Faulkner
Samantha Hare
Sarah Grant
Schmidt Family
Shannon and Deanna
Whitty
Shannon B
Shantelle Heiskanen
Stacey Wenger
Tabitha Michel
Taylor Hunter
The Pike Family
The Proudfoot Family
The Spitzer Family
Vanessa Wood
Violet and Amanda

We always feel very welcomed by the support workers at The Hub. We feel it's a safe place to come and learn and not be judged by others. My child has definitely learned how to socialize and play with others during our time there.

~ Hub Parent





Free Child &
Youth
Programming
Drop-In Free Play
Parent & Baby
Groups
Resources &
Support for
Parents &
Caregivers
Rural
Community
Supports
Developmental
Screenings



CONTACT US

W: thehubfrc.ca

E: inquiries@thehubfrc.ca

P: 780.743.9225

Shell Place West Entrance, 1 C. A. Knight Wy, Fort McMurray, AB T9H 5C5

