

HIKVISION®

**New Ultra-Series Cameras**  
More intelligence, sharper night vision

IR  White light

**New Ultra-Series Cameras**  
More intelligence, sharper night vision

**DarkFighter** 



www.hikvision.com  
support@hikvision.com



Distributor Address

Meet Hikvision's

# Ultra-Powerful

## Cameras

Hikvision designed Ultra-Series Network Cameras to upgrade security in virtually any setting with excellent hardware, expanded software capabilities, and the Hikvision Embedded Open Platform (HEOP) for third-party applications.

The Ultra Series offers unmatched reliability and scalability to boost success for systems integrators and installers in a host of markets.

Read on to see how these powerful cameras can provide a critical, cost-effective solution in your next installation.



### Feature Highlights

#### Surprising image quality in virtually any light

Select cameras in the Ultra Series feature Hikvision's **DarkFighterS technology**, producing professional-quality color imaging in low light. Even in total darkness, users can still get sharply-focused HD images, whether in color or black & white.

#### Superb Low-light Imaging

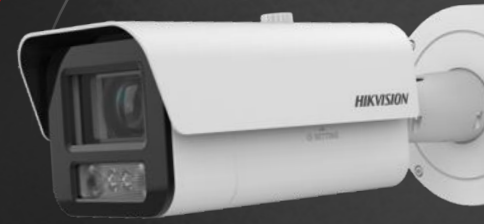
F1.0 fixed lens and advanced sensor ensure excellent color reproduction in low light.

#### Smart Hybrid Light

Three supplemental lighting modes available – infrared, white light and smart mode – to meet the needs of different environments.

#### Super Confocal Lens

Designed with micron-level precision for masterly focus and long-lasting, high-resolution images with an F1.0 large aperture.



**DarkFighter**

### How smart hybrid light works

There are three lighting modes available: **IR, white light, and the smart "hybrid" mode.**

In IR mode, the camera uses its IR lighting in darkness. In white light mode, the camera uses a visible light to ensure continual color imaging overnight.

In smart mode, the camera maintains infrared illumination and only employs the visible light when triggered by the detection of a person or vehicle. By smartly switching the lighting modes, users can get all the details at those key moments.



When there is no target in the area, the infrared light turns on



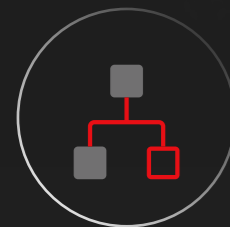
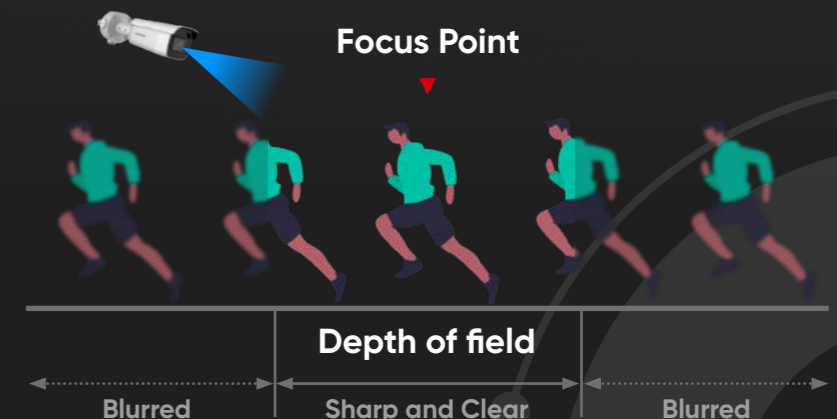
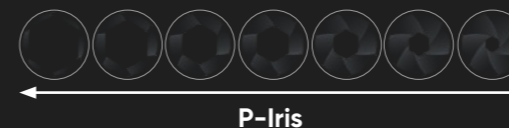
When a car or person appears, the white light turns on



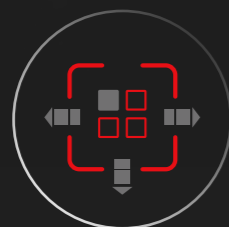
When the car or person leaves, the camera switches back to the infrared light.

### More precise iris control

Select Ultra-Series Cameras feature **Precise Iris Control (P-Iris)**, a technology designed to provide precise, automatic control over the camera's iris opening. By optimizing the amount of light that enters the lens, P-Iris helps improve the overall image quality, maintain the right depth of field, and render details in high clarity.



Equipped for third-party algorithms



Intelligence for varied scenarios



Smart Hybrid Light



Excellent imaging performance

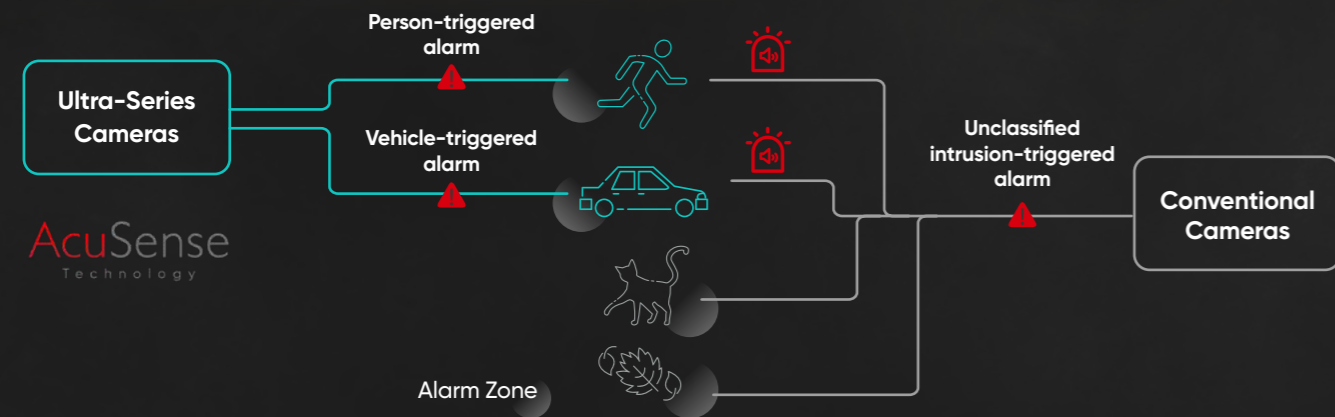
### Variable intelligence for a variety of scenarios

Switch from among four embedded AI algorithms specifically designed for intelligent applications, including **People Counting**, **Perimeter Protection**, and more.



### Automated object detection that continues learning

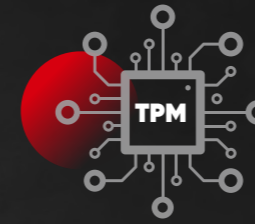
With **AcuSense classified object detection**, Ultra-Series Cameras automatically detect persons and vehicles, pushing instant notifications to users or triggering **Live Guard visual and auditory warnings**.



This advanced technology is now enhanced with the **Learn-by-Example** mode of **Self-Learning Analytics**. Users note the false alarms generated within a particular scene, and the algorithm will learn from the examples and minimize similar errors in the alarm triggering that follows.

### Running third-party algorithms with HEOP

Users can now go beyond general-purpose algorithms. With the **Hikvision Embedded Open Platform (HEOP)**, select Ultra-Series Cameras can run deep-learning algorithms tailored by third-party providers for users' unique installation environments or business-enhancing scenarios.



### Cybersecurity and Data Protection

Ultra-Series Cameras support **IEEE 802.1x**, **SRTP** and **SFTP** protocols, **security logs**, and **SD card encryption**, along with other data protection measures.

### Long-term Performance Guaranteed

Hikvision's global after-sales service network and 5-year warranty for Ultra-Series Cameras provide reliable project maintenance and improve cost efficiency.



### Typical Applications



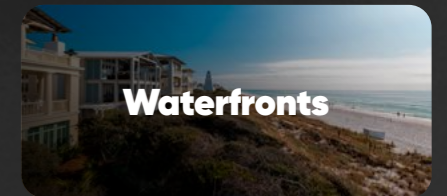
**Perimeters**

Helping users stay focused with classified object detection and sharply-focused images in either color or black & white



**Shops**

Rendering excellent imaging even in challenging light and providing automated people counting at entrances



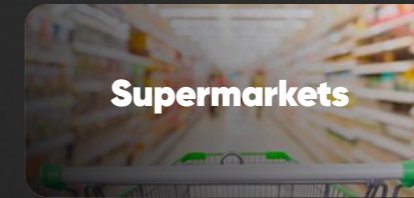
**Waterfronts**

Operating in coastal areas with corrosion-resistant coatings and NEMA 4X certification



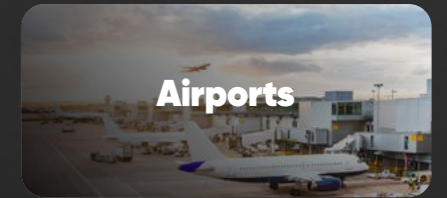
**Parking Lots**

Providing 180° panoramas in 4K resolution, with colorful imaging around the clock



**Supermarkets**

Outputting live HD video directly on an in-store display via the HDMI ports



**Airports**

Covering ultra-long distances with up to 15x optical zoom and high-performance IR LEDs

### Towards a Greener Footprint

Ultra-Series Cameras feature a **low-power mode** to reduce the camera's power consumption by up to 50%. Hikvision also continually refines the cameras' packaging by maximizing the use of **eco-friendly, biodegradable materials**.



Reduce the camera's power consumption by up to **50%**

