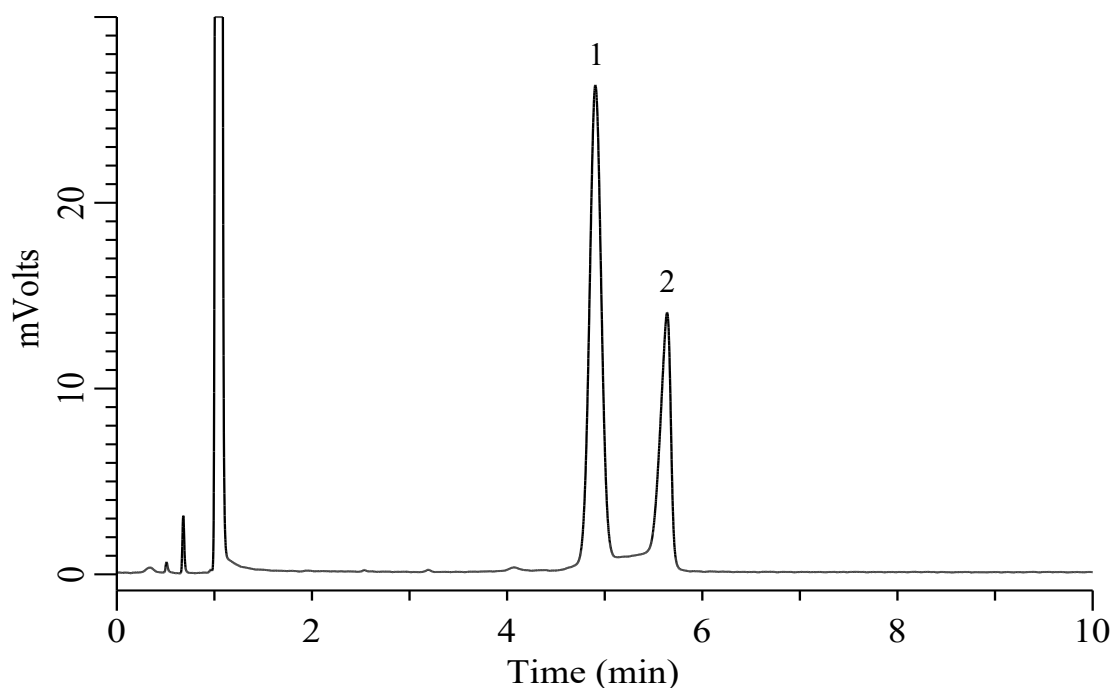


Analysis of Acrylic Acid and Methyl Methacrylate

(Under the Condition of the Japanese Pharmaceutical Excipients 2018. Polyvinyl Alcohol, Acrylic Acid and Methyl Methacrylate Copolymer)



Conditions

System : GC-4000 Plus /FID
Column : InertCap 1 (GL Sciences Inc.)
 0.53 mm I.D. x 30 m df = 5.0 μ m
Col. Cat. No. : 1010-11449
Col. Temp. : 45 °C
Carrier Gas : N₂ 19 mL/min , Constant Flow
Injection : Splitless 2.00 min
 200 °C
Detection : FID Auto Range
 200 °C
Sample Size : 1 μ L

Analyte

1. Methyl Methacrylate 500 mg/L
 2. Acrylic Acid 300 mg/L
 Resolution (1, 2) : 3.39 (\geq 1.5)
 RSD of the peak
 area of 1 (%) (n=6) : 2.11 (\leq 15)
 RSD of the peak
 area of 2 (%) (n=6) : 3.18 (\leq 15)