



be seen
be heard
belong

Preparation for Employment & Supported Internships

2025/2026



Helping you make
the journey from
education into
employment.



be seen
be heard
belong

We support people aged 16-24 with learning difficulties and/or autism to make the journey from education to employment.

We help you **prepare for the world of work through two employment programmes.**

We match you with a programme that suits your needs and abilities.






Ofsted
**Good
Provider**

We are proud to be rated by Ofsted as a '**Good**' provider overall, with '**Outstanding** in Behaviour and attitudes', and '**Outstanding** in Personal Development'.

'Learners value the positive culture that leaders and staff have successfully created... staff articulate with confidence the organisation's ethos of 'be seen, be heard and belong' which they consistently embody in their work'.

Our programmes can help you:

- Build confidence
- Become more independent
- Develop employability skills
- Grow ambitions and goals
- Increase communication skills

Preparation for Employment

Supported Internships



Preparation for Employment

Preparation for Employment is a **full-time, 1 year programme.**

It is a **pre-internship year** – preparing you for going into a Supported Internships year.

If you need a little more support to prepare for the world of work, this is the programme for you.

be seen. be heard. belong.





During the programme, we work with you to understand what you want to learn.

This may include growing your confidence, building work-related skills and choosing what career paths you want to focus on.

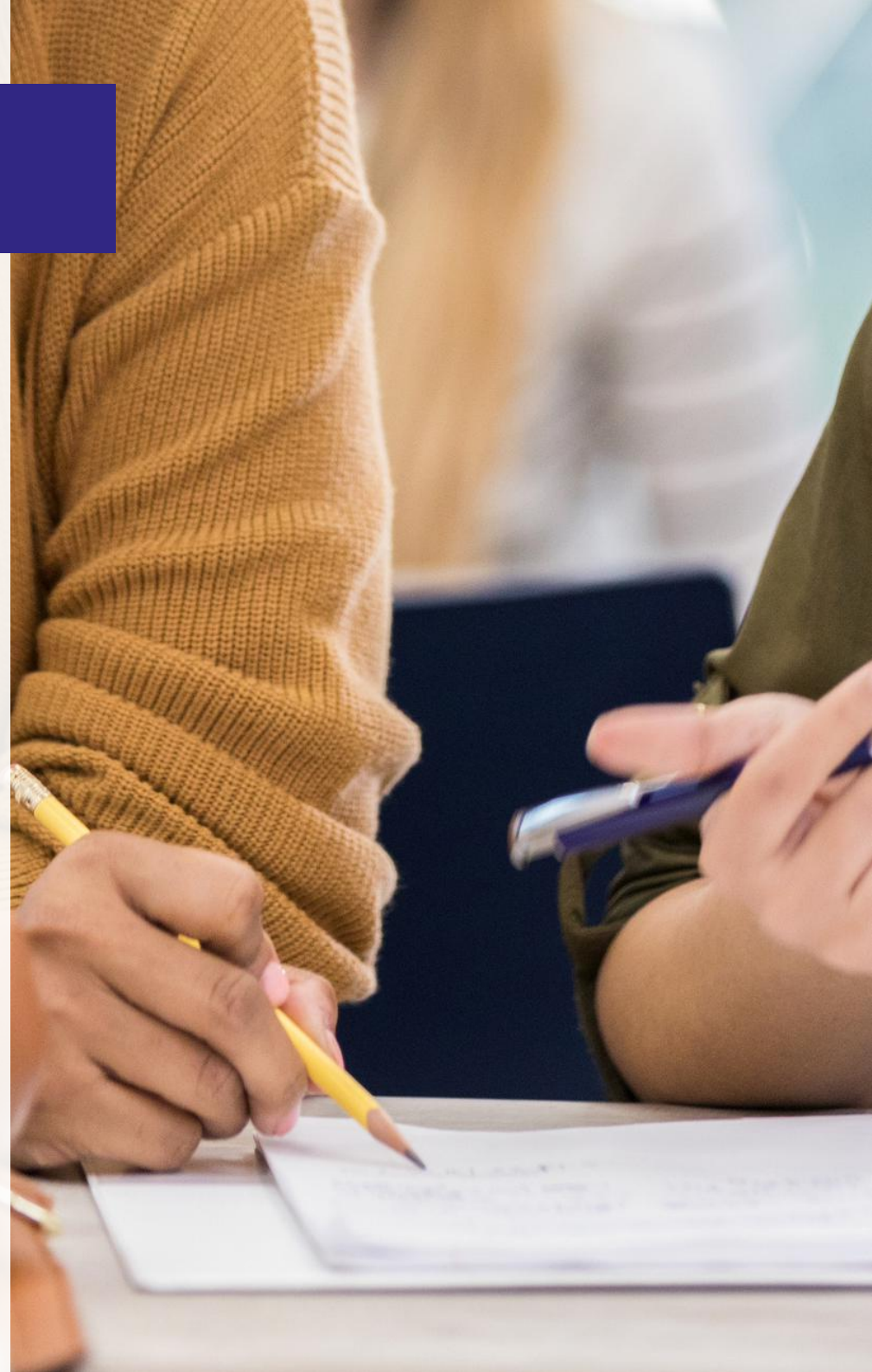
Preparation for Employment

Preparation for Employment

Full-time hours are made up of days in a **classroom** and days at work experience placements.

Up to 3 days per week are spent in a classroom focussing on:

- Functional Skills, Maths and English
- Citizenship activities
- Personal Development lessons
- Support from Employment Specialists to prepare you for work placements





On **non-classroom days**, you will take part in work experience placements, building skills in:

- Confidence
- Teamwork
- Communication
- Time management
- Following instructions
- Understanding responsibility
- Taking initiative

Preparation for Employment

Supported Internships





Robert

Young person

bemix Supported Employment

"I really enjoy working at the Adult Education Centre. Everything there is perfect, from the room, my desk, the equipment and the people there. Every time I go to work I always enjoy it... there hasn't been one day where I've thought I didn't do well or "I don't enjoy this", because I enjoy working there... I am really hoping to get paid employment from the job when the Supported Internship ends."

Supported Internships

A Supported Internship is a **full-time, 1 year programme.**

You will be supported to achieve high-quality paid work that lasts so you can begin to build your career.

You can join this programme instead of, or after, 6th form or college. You can join whenever the time is right for you to move from education to work.

be seen. be heard. belong.





The programme focuses on getting you into a workplace.

We match you to employment opportunities by working closely together and completing a Vocational Profile.

Once the work placement begins, you will be learning and training within the role.

Supported Internships

Supported Internships

The internship is unpaid but with the aim of leading to paid work afterwards.

You will be supported by your employer and a bemix Employment Specialist. As you gain confidence and skills, the Employment Specialist support will reduce and eventually stop, but they are always there if you need more help.

We also offer travel training.





Young people spend up to 2 days per week in a **classroom** focussing on:

- Functional Skills, Maths and English
- Personal Development lessons
- Support from Employment Specialists to prepare you for work placements

Supported Internships

Preparation for Employment & Supported Internships

Functional Skills classroom lessons focus on Maths, English and Employability. You will work towards EHCP outcomes. We mix subjects with activities and practical lessons, set to your learning level.

Personal Development lessons focus on CV writing, interview skills and vocational qualifications.





During **Citizenship**, groups learn skills for everyday life when entering adulthood. From budgeting, learning to vote, reading pay slips and tax codes, to different types of housing. You will also have class visits to different employers, the perfect opportunity to actually see and ask questions about what it's like to work in different environments.

Preparation for Employment & Supported Internships

Harry's journey with Azets

INTERN STORIES >

From placement to paid employment

Harry's remarkable progression throughout his Supported Internships placement meant that international accountancy firm, Azets, offered him paid employment. A role based on his strengths, whilst also matching the needs within their business. Harry quickly became an asset to the organisation.



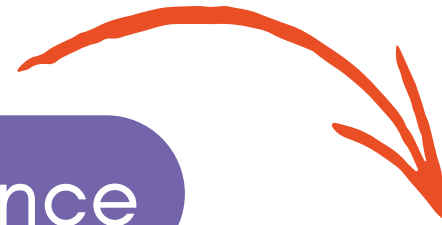


Harry

I feel like I've reached a major milestone in my life
which I've been wanting to reach and have got there:
I'm now in a job and it's nice to be employed.

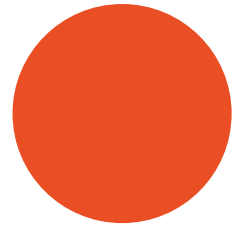
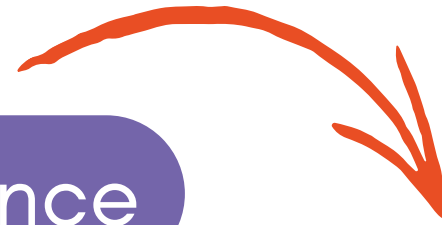
Rob's

Supported Internship experience



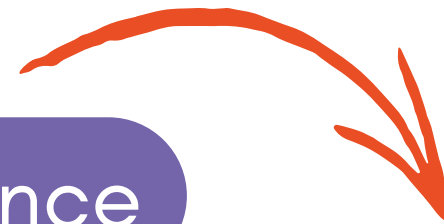
Danielle's

Supported Internship experience



Alex's

Supported Internship experience



Alex's

Supported Internship experience



Alex's Mum, Kirsty

entry criteria



- Have an Education, Health and Care Plan
- Be 16-24 years old
- Can travel to Medway, Swale or Canterbury
- Able to travel to venues for classroom-based lessons
- Ready to move on from education and into work
- Have goals of growing independence and gaining employment

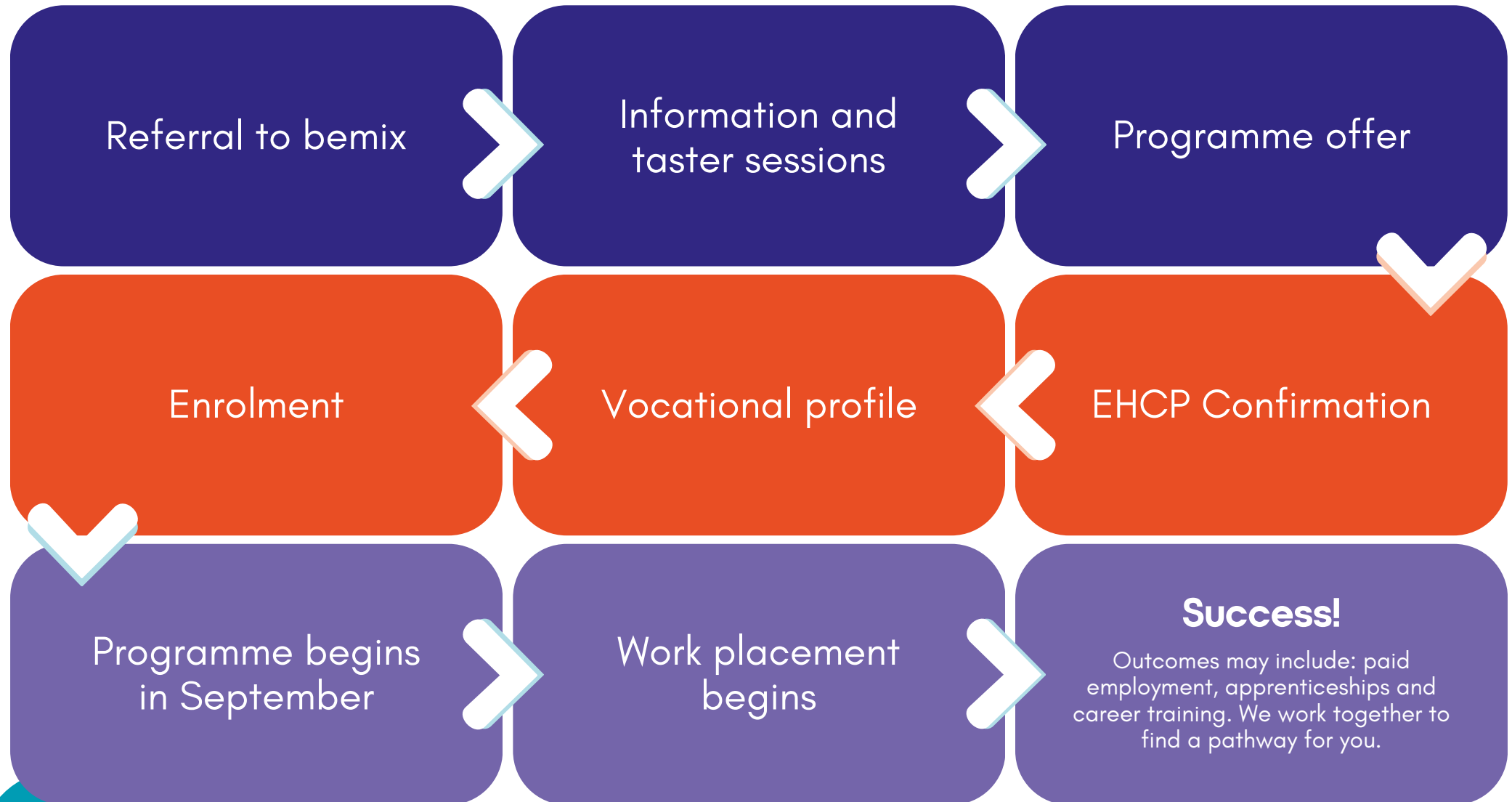
entry criteria

- Willing to travel for work (travel training can be provided)
- Qualification criteria:
 - Kent EHCP**
Entry Level 1-3 and Level 1-2
 - Medway EHCP**
Assessed on a case-by-case basis
- Have a bank account or be willing to set one up
- Able to provide a National Insurance Number
- Not currently in employment



the process

Preparation for Employment and Supported Internship





the referral process

Preparation for Employment and Supported Internships

- 1 Referral or consultation via Local Authority, parent or other
 - 2 Contact made to attend an information session or a 1:1 referral meeting at the venue
 - 3 Referral meeting or information sessions with Supported Employment Specialist and bemix staff to ensure we are the right next step
 - 4 Provisional offer – this is a conditional offer based on bemix being able to meet the needs as identified in EHCP from the local authority.
 - 5 If we already have had Consultation from Local Authority this will also be responded to
 - 6 Once we have received a Consultation and we have agreed we can meet needs then we can start the enrolment process
- 

our venues

Canterbury

Canterbury Innovation Centre



Swale

The Pulse



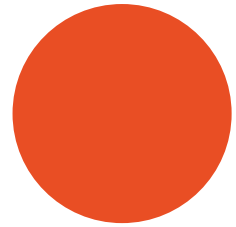
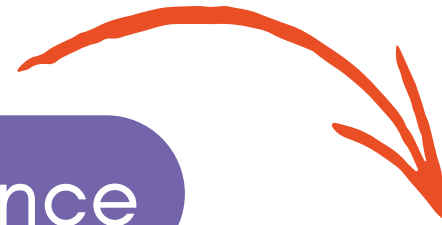
Medway

5a Community Hub, Rochester



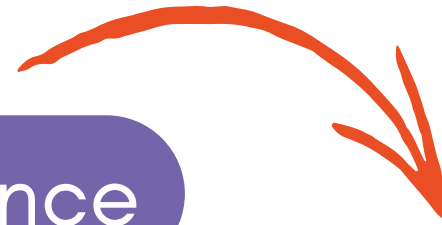
Daniel's

Supported Internship experience



Monty's

Supported Internship experience



We would love the opportunity to meet and tell you more about how we can support you to prepare for the world of work and hopefully, find paid employment.

Please contact us to learn more or discuss the next step.

Contact our Employment Specialists



www.bemix.org



referrals@bemix.org



01227 374285





be seen
be heard
belong