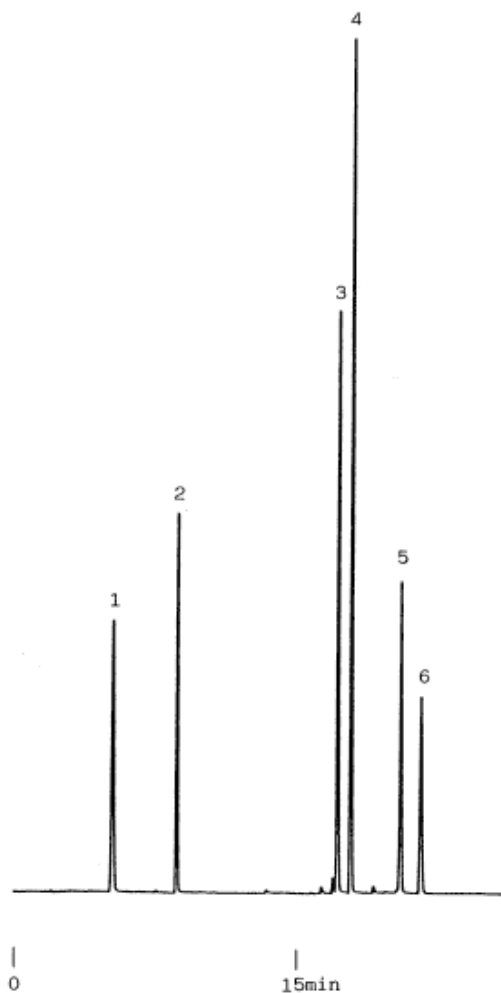


### 6. Synthetic food dyes

Data No. LA061-0000



Column :Inertsil ODS-2  
5µm  
150 × 4.6 mm I.D.

Column Cat. No. :5020-01101

Eluent :A: CH<sub>3</sub>OH/10 mM (NH<sub>4</sub>)<sub>2</sub>HPO<sub>4</sub> = 10/90  
B: CH<sub>3</sub>OH/10 mM (NH<sub>4</sub>)<sub>2</sub>HPO<sub>4</sub> = 70/30  
A/B = 100/0 - 15 min - 0/100

Flow rate :1.0 mL/min.

Col. Temp. :50°C

Detection :VIS 530 nm

Injection Vol. :

Sample :Synthetic Food Dyes

Solutes : 1. R-2  
2. R-102  
3. R-3  
4. R-106  
5. R-104  
6. R-105  
each 100 ng