

JULY 2025

imag

informative | interesting | interactive

WORKING TO RESTORE ERME

A free event will highlight local charity's efforts

DEVON BREATHERS

Group support for people with breathing difficulties

GO ON A DEEP SEA ADVENTURE

Sign up for library's summer book quest



Find out about the project encouraging Ospreys to become resident on the Erme – see page 13

Need a will?
Need an LPA?
Home visit service?
Free initial consultation?

GARD & CO



Solicitors

01752 648336

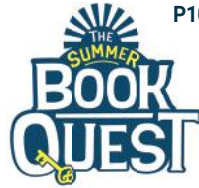
gardandco.com



↑ Ivybridge Theatre Company is looking for new members *Clubs & groups p22*



P28



P10



P13



P29

FEATURES

- Charity is working to restore river Erme p13
- 'Boarding out' pauper children p14
- New local history storytellers p18
- Sale of impressive collection of clocks p24

WHAT'S ON

- Plym Piecemakers' Quilt Show p9
- Bingo like you've never seen before p5
- Evening lecture – Lost to the Sea p6
- Male voice choir in concert p5

MORE

- Deep sea adventure at library this summer p10
- Support for those with breathing difficulties p17
- Open day at the Clay Factory p28
- Harriers win own relay races p29

CONTACT THE IMAG

Do you have an article or story, or details of an event, you'd like to share in the imag?

It may be a charity fundraising quest, a report about your club or a personal achievement – whatever, we'd like to hear about it! Please email us at info@theimag.co.uk. The deadline for the August issue is 30th July.

ADVERTISE IN THE IMAG

Advertise alongside informative, interesting local content – not just page after page of other adverts.

We deliver 8,650 copies each month to homes in Ivybridge and 12 surrounding towns and villages including Yealmpton, Ugborough, Ermington, South Brent and Cornwood.

DID YOU RECEIVE THE IMAG?

Do you think you should be receiving the imag but do not get it delivered at the moment?

Dogs and notices (of varying politeness) stating that free things aren't wanted aside, we aim to deliver to as many properties as possible in the area we cover. If you're not receiving a copy, please do let us know.

MAKING THE ERME FIT FOR AN OSPREY

Welcome to the latest issue of the imag.

The Erme river may be one of the South Hams' 'lesser-known' rivers, but it makes an indelible mark on the areas it meanders its way through on its journey to the sea.

But its serene beauty masks a sad truth – it is not in very good condition, indeed water quality at the mouth of the river is rated 'poor'.

Fortunately, there is a local charity, run entirely by volunteers, that is working hard to restore the Erme. And Wild About The Erme River (WATER) is holding a free event in Ivybridge to tell people about its work (see page 13).

There will also be a speaker from the Devon Osprey Partnership, who will talk about the increasing number of ospreys making their home in south coast estuaries and the work being done to encourage them to make the Erme home, too.

Inside are also the usual informative and interesting articles and features you expect, as well as details of a host of forthcoming events.

Until next time...

Steven – editor

Helen Moore

Your Independent
Estate Agent

Specialising in the sale of
residential & new homes
in the South Hams &
Plymouth



Call 01752 962162

www.helenmoore.exp.uk.com

HELEN MOORE
PROPERTY



WESTERN
Carpets & Pine Ltd

www.westerncarpets.co.uk



Create the perfect space

Your Flooring and Furniture Specialists Since 1995

Visit our *new* showroom

Unit 6, Richmond Place, Central Avenue, Lee Mill Industrial Estate, Ivybridge PL21 9RL

Tel: 01752 896776 • Email: sales@westerncarpets.co.uk

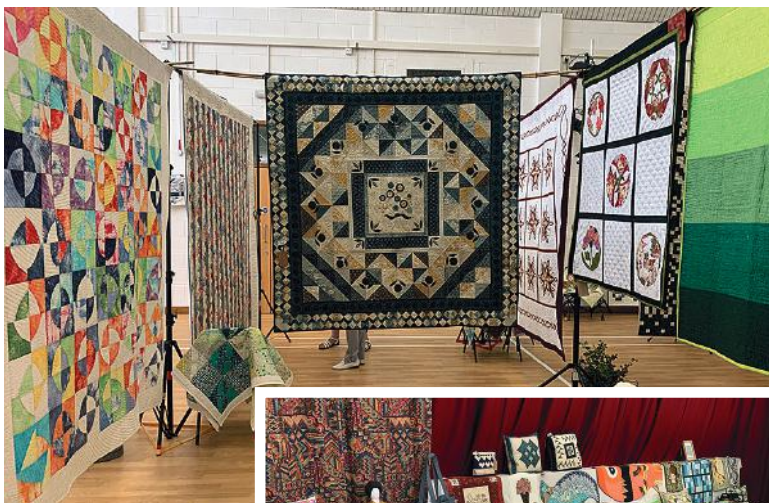
Open 9am-5pm Monday to Friday, Saturdays by appointment only.

Male voice choir in concert

Saturday, 19th July, 7pm
Ivybridge Methodist Church
 The Tamar Valley Male Voice Choir and performing a 'concert not to be missed' in aid of community transport service, Ivybridge Ring & Ride.

Tickets are £10 (U18s free) and are on sale at The Ivybridge Bookshop. They are also available from Ring & Ride (01752 690444), Chris Gunning (07983 116395) or on the door (cash or card).

Refreshments on sale during the interval.



Shilstone House tour

Sunday, 20th July, 2.30pm
Shilstone, nr Modbury
 Owner Lucy Fenwick will take you around the house, including some of the private rooms, and will explain its history.

Shilstone has been virtually entirely rebuilt, by local craftsmen who have worked on the site since it was purchased in 1997.

The corner stone was laid in 2000, and the outside building work completed in 2010. The interior was finally completed in 2019 with the remarkable oak-panelled drawing room with its fine 17th century style plaster ceiling.

Lucy will explain this work as you pass from room to room and explore what is largely a completely new house. She will be delighted to answer any questions you may have as you go around.

For more details and to book go to shilstonedevon.com/whats-on.

Music Bingo

Saturday, 26th July, 7pm
Ivybridge Rugby Club
 Party, sing and win at bingo like you've never seen before!

There will also be cocktails and dancing.

Bingo starts at 7.30pm. £10 per person (all games included). Book now at irfc.bytable.net/menu/SO-CIAL-EVENTS.

Piles Copse walk

Saturday, 26th July
Starting at St Petroc's, Harford

The next Harford Special Spaces event is a walk to Piles Copse.

En route, there will be a look at the ancient burial kistvaens. There will be an opportunity for a swim at Piles Copse, so bring swimming gear if you are interested.

Please bring a packed lunch. This is a moderately easy walk. Wear sturdy shoes. Dogs are welcome on leads.

→ P6



Plym Piecemakers is holding its Quilt Show in Yealmpton – see page 9

Printmaking | Music | Drama | ChatGPT
 Circus Skills | Maths | English | Creative Writing | Song Writing
 Interview Skills | Local History Storytelling

FREE Life Skill Sessions
 for young adults aged 16-25

Brent Roots
 NEW GEN SKILLING UP

at South Brent Old School Community Centre and the Rec

Search
 Brent
 Roots

8 different sessions to discover between 11th July and 22nd August

Yealmpton Agricultural Show

Wednesday, 30th July, 8am
Kitley Lawns, Yealmpton

The Yealmpton Show is a one-day agricultural show showcasing all that is good about country life.

The show features a busy schedule of livestock and other competitions, including cattle, horses, homecrafts and, new this year, the Egg Show!

There is also a varied main ring programme, featuring a vintage tractor display, parade of the hounds, terrier racing and Supreme Horse Championship.

Visitors can also browse exhibitor and trade stands and partake in fabulous local food and drink.

Gates are open 8am-



A walk to Piles Copse is the next Harford Special Spaces event

5.30pm. Discounted advance tickets are available at yealmptonshow.co.uk.

CLAY FACTORY OPEN DAY - P28



FUNDED BY: ST PETROC'S CHURCH


SUMMER FUN FOR YOUTH

SECONDARY SCHOOL AGE
MONDAYS 1-3PM

21/07/25 - POTTERY WORKSHOP
MAX. 12 PEOPLE*

28/07/25 - BOARD GAMES

04/08/25 - FUN FOOD FEST

ALL AT PALSTONE PARK REC.
FREE

*£3 REFUNDABLE DEPOSIT FOR POTTERY

CONTACT ELIS ON 07966 911560
BOOKING & CONSENT FORM REQUIRED

ADMIN@IVYBRIDGE.YFC.CO.UK

PLEASE BOOK EARLY
DUE TO LIMITED AVAILABILITY

Bingo @ Hannahs

Friday, 1st August
Dame Hannahs, Woodlands Road, Ivybridge

Enjoy an evening of fun with family, children and friends..

Doors open 7pm, with eyes down at 7.30pm sharp

Refreshments and cake available throughout. Half time raffle.

Evening lecture – Lost to the Sea

Thursday, 7th August, 7pm
Devon Rural Archive, Shilstone, near Modbury

In this lecture, award-winning author Lisa Woollett will talk about her latest book 'Lost to the Sea: A Journey Round the Edges of Britain and Ireland'.

Inspired by growing up on the island's eroding cliffs, she goes in search of traces of lands lost to the sea and shifting sands.

Lisa is the author and photographer of several award-winning books, including her memoir 'Rag and Bone: A History of What

We've Thrown Away', which won the Royal Society of Literature Giles St Aubyn Award for Non-fiction.

The Shilstone Café will be open between 6pm and 7pm for drinks and cake.

Go to devonruralarchive.com/events for more information and to book tickets.

Quiz night

Thursday, 7th August 7pm
Dame Hannahs, Woodlands Road, Ivybridge

Book now for Dame Hannahs' our next quiz Night.

Test your knowledge while having fun with family and friends. Teams of up to six people, so either create your own team or join others on the night.

Tickets are £10 each and includes quiche, salad and new potatoes. Booking essential – register your team by calling the fundraising team on 01752 898135 or by emailing supportus@discoverhannahs.org.

➔ **For more What's On turn to page 9**



COMMERCIAL PROPERTY AT HOWARD & OVER SOLICITORS

At Howard & Over, we know that when it comes to property, timing is everything, and so is expert advice. Whether you're buying your first industrial unit, selling a shopfront, or growing your commercial portfolio, our expert commercial property team is here to make sure your next move is the right one.

Thinking of Taking the Next Step?

The market is moving, and if you've been waiting for the right time to invest or expand, this is it. Rising demand, shifting trends, and regional growth mean that acting early could make all the difference. Whether you're an experienced investor or just starting out, we'll support you every step of the way, without the jargon, without the hassle.

Why Work With Us?

We bring deep local knowledge and sharp commercial insight to every deal. Based in the South West, our team has built a reputation for trusted, jargon-free advice that helps clients seize opportunities and structure their investments for long-term success.

From identifying high-performing properties to managing lease agreements, contracts, and complex transactions, we're here to keep things clear, compliant, and moving at the right pace.

If you're considering your next commercial property move, don't wait. Speak to our expert team at Howard & Over today. We'll listen, advise, and help you take the first step toward a smart, secure investment. We're your trusted local law firm.

9 Glanvilles Mill • Ivybridge • PL21 9PS
e: ivybridge@howard-over.co.uk
t: 01752 690123



HOWARD & OVER
SOLICITORS EST. 1914

www.howard-over.co.uk





gth

COME AND SEE US AT YEALMPTON SHOW

Please do pop in to our marquee for refreshments, goodies and chats with our friendly staff about all property related matters - you might even spot our special guest Gloria too!



01752 393737

residential.ivybridge@gth.net

GREENSLADE TAYLOR HUNT
www.gth.net

We know that a financial adviser is key for those life changing moments, those milestones when your priorities change and you need to rethink.



01752 837 950



www.manningandco.co.uk



MANNING & COMPANY
Independent Financial Advisers
Authorised and regulated by the Financial Conduct Authority

Plym Piecemakers' Quilt Show

15th & 16th August
Yealmpton Community Centre

If you are interested in colourful, handmade textile art, you are in for a treat when local quilt group Plym Piecemakers holds its quilt show in Yealmpton.

This show is only held every three years, so it's a rare opportunity to see the group's collection of work.

The group is a mixture of local people from Ivybridge, Yealmpton and Plymouth who specialise in making all sorts of textile pieces. Some of these quilts could be described as traditional, using hand sewing and familiar patterns. Some more modern, with vibrant colours and a less formal, looser style.

At the show, there will be the chance to talk to the makers about their work, as well as opportunities to buy items made by the group, including cushions, bags and other decorative handmade items.

There will also be delicious home-made cakes, savoury scones and tea and coffee.

There will also be a raffle, with the chance to win a beautiful handmade quilt, a hamper of locally made food and drink and other small prizes. There will be a chance auction and a Name That Tune competition.

This year, the group's chosen charity is Huntington's Disease Association.

The show will be open between 10am and 3pm on both days.



Community Festival Funday

Friday, 22nd August
Dame Hannahs, Woodlands Road, Ivybridge

Dame Hannahs is holding a Community Festival Funday on Friday, 22nd August, 11am-4pm.

There will be live music and entertainment, stalls, games, crafts, bouncy castle, refreshments and much, much more.

Dame Hannahs look forward to welcoming members of the local Ivybridge community for a day of fun.

If you would like to be a part of the festival or would like more information, email louisa.traynor@discoverhannahs.org.

Summer Barn Dance

Saturday, 30th August, 6pm
Lukesland

All are welcome to the Harford Summer Barn dance.

There will be live music from local musicians, a BBQ, a raffle and an auction of promises.

Tickets are £17.50 for adults (£8 for under 16s) which includes the BBQ. There will be a bar for drinks (cash or card).

Tickets from deirdre.pope@some.oxon.org.

Proceeds will support St Petroc's Church.

Artisan Market takes a summer break

Ivybridge Artisan Market takes a break in August. The market, held in The Watermark, resumes on 6th September.

Fishing coaching

Every Saturday until 23rd August, 2-5pm

Filham Lake, Filham Park
Plymouth and District Coarse Angling Club, with support of the Angling

Trust, is holding fishing coaching sessions at Filham Lake.

Three fully accredited coaches will help and support people in their introduction into fishing.

Whether you are a lapsed angler looking to get back into fishing, or a complete beginner, the coaches will be there to guide you. For juniors, a parent/guardian must be present.

Coaching is open to everyone, irrespective of age or physical ability.

For more information and to find out availability and book, contact John Thompson on 07525 713833 or email chriswenlock@icloud.com.

COMMUNITY DIARY - P30-31

THE THREE MUMS FOUNDATION

Family FUN DAY

Join us for a day of fun, laughter, and community spirit as we celebrate the launch of The Three Mums Foundation supporting children with complex needs and disabilities.

SATURDAY 19TH JULY 11:00AM - 3:00PM

Ivybridge LEISURE CENTRE

- Bouncing Castle
- Kids Disco
- Inflatable Swim Fun
- Food and Bar services.

Arts & Crafts, Baking, Face Paints, Mud Pies, Disney characters, Moo Music And MUCH MORE!!

VISIT OUR WEBSITE TO BOOK YOUR POOL SEAT

Leisure Centres, Ivybridge PL21 0SL

VISIT THE LIBRARY THIS SUMMER **FOR A DEEP SEA ADVENTURE**



This summer, Ivybridge Library has its very own reading challenge – The Summer Book Quest, Deep Sea Adventure.

Completing the book quest is easy, just:

1. Visit the library
2. Read what you like
3. Enjoy quest activities

Children who sign up for the Book Quest will receive a Deep Sea Adventure booklet to record their visits to the library, log their

reading and tick off quest activities.

For each element, children will be given a sticker. When they have completed all three sections and collected all their stickers, they will receive a certificate and a ninja starfish key chain.

The library has also partnered with The Watermark and Fusion Leisure Centres, so children will receive two vouchers, one for a free swim and one to see a film

at The Watermark cinema. We also have two free Crealy tickets for one lucky finisher.

The Summer Book Quest is completely FREE and runs until 6th September. Children do not need to be members of the library to do the Quest, but it's free (and quick) to join and membership gives your child access to a wealth of free books.

To add to the fun, a num-

ber of exciting activities are planned throughout the holidays, including an art workshop to create a sea themed window display in the children's area, visits from Wembury Marine Centre, and VR headsets to explore the local marine environment.

See the library's website or Facebook page for details of times, dates and ticket information, plus more exciting events!

learndevon 
adult learning and skills

Adult education courses in Devon

Learn Devon offers free, face-to-face and online courses and qualifications for adult learners across Devon. New courses starting throughout the year.

Visit the website or contact our team to find out more and enrol.

www.learndevon.co.uk 

English and maths GCSEs and Functional Skills qualifications starting in September 2025.
Contact our team to enrol

Nature's Larder

Health Store & Natural Health Centre

Health Foods • Supplements

Beauty Products

Complementary Therapies

10 Glanvilles Mill • Ivybridge • 01752 894197

www.natureslarder.co.uk



Citizens Advice

at The Watermark, Ivybridge

Every Monday

9.30am - 12.30pm

(EXCEPT BANK HOLIDAYS)

citizens
advice



50% OFF
sale
continues

21 Fore Street
Ivybridge
PL21 9AB

Diana
BOUTIQUE

Tues-Fri
10am-3pm
Sat: 10am-1pm

info@dianaboutique.co.uk 01752 894562 www.dianaboutique.co.uk

THE IVYBRIDGE BOOKSHOP

Upcoming Events - Meet the Authors!



Kate Lord
Brown

The Golden Hour

Thu 17th July, 5:30pm

A dual timeline story combining 1970's Beirut, and 1930's Cairo in a tale of love, sacrifice and war, and the undiscovered tomb of Nefertiti.



Liz Fenwick

The Secrets of Harbour House

Thu 24th July, 5:30pm

Kerensa is captivated by the story of Newlyn artist Bathsheba Kernow, escaping a stifling existence in 1930's Cornwall for a new life in the underbelly of Paris and the palazzos of Venice.

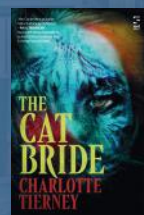


Charlotte Tierney

The Cat Bride

Thu 31st July, 5:30pm

A mesmerising and dark tale combining fairytale, adolescence, and the beast of Dartmoor. Sixteen years after a big cat escaped from a Dartmoor Zoo, stories emerge again of a predator on the loose.



Free to join, please email info@ivybridgebookshop.com to register

The Ivybridge Bookshop

18 Fore Street, Ivybridge

Tel 01752 963 521

www.ivybridgebookshop.com

WE BUY GOLD

ALSO SILVER & COLLECTABLES

Hectors House Antiques Centre

112 Ridgeway, Plympton PL7 2HN

We stock gifts for all occasions, antiques, vintage items, art, gold and silver and 3 floors packed with conversation pieces from around the world. Bring us your Antiques and Collectables and your unwanted Gold & Silver.

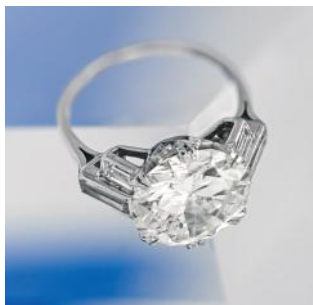
WE PAY TOP PRICES! Call us now on 01752 341681

WE ALSO BUY:

Military Items, Watches and Clocks, Coins and Stamps, Vintage Toys and Trains
Postcards and Old Books, Costume Jewellery, Bank Notes
BOX THEM UP AND POP IN FOR A CASH OFFER!

AMAZING GIFTS FOR ALL OCCASIONS

LOCAL SALEROOM • LONDON PRICES Outstanding Results for Local Clients



Fine 5.5ct Diamond Ring
SOLD for £21,700



'Sailors & Seagulls' by Beryl Cook
SOLD for £20,000



George I Memento Mori Ring
SOLD for £12,200

Sell with confidence - entries now invited for our upcoming auctions



plymouthauctions.co.uk
359 Faraday Mill Trade Park, Plymouth, PL4 0SE

01752 254740

info@plymouthauctions.co.uk



FREE EVENT WILL HIGHLIGHT HOW LOCAL CHARITY IS WORKING TO RESTORE THE RIVER ERME

AND HOW IT IS FACILITATING NESTING SITES FOR OSPREYS

The Erme is one of the South Hams' lesser-known – but no less beautiful – rivers, so you could be forgiven for thinking why does it need restoring?

A recent, stark reminder of why our local river needs help was when water quality at Coastguards Beach – on the Erme estuary – was classified as 'Poor' by the Environment Agency (EA) last November. This was after only one season of the EA's regular testing, which became mandatory when Wild About The Erme River (WATER) successfully campaigned for Coastguards Beach to be officially designated as bathing water. Only two bathing waters in the whole of Devon had a 'Poor' classification in 2024 and Coastguards was one of them.

Pollution coming into the estuary from upstream is the cause, and the EA is now actively investigating the nature and sources of that pollution, as they are required to do by law.

WATER is a local environmental charity focused on restoring water quality and habitat from the Erme's source on Dartmoor to where

its estuary meets the sea. It is staffed entirely by volunteers and is funded only by donations, membership and grants.

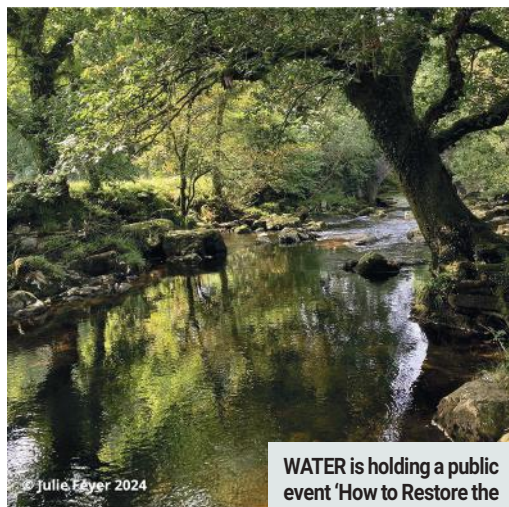
The charity has multiple workstreams that cover the ever-changing nature of the river's catchment as the Erme makes its 24km journey from source to sea.

Rain enters the river via its many tributaries and feeder streams by flowing over, or percolating through, the surrounding landscape. So what happens on the land directly affects the water quality in the river.

Pollution can arise from multiple sources, such as sewage overflows, road and field run-off, bank erosion, livestock access and human activity.

Habitat and biodiversity in the water and along its corridor are all under threat when the delicately-balanced ecosystem is disrupted. Restoring such a large and complex environment requires careful planning.

A Catchment Action Plan is currently being developed by WATER, supported by the EA and the Rivers Restoration Centre, the acknowledged



© Julie Fayer 2024

experts in this field, who have guided WATER's team in a series of online workshops.

WATER's Catchment Action Plan (CAP) team includes volunteers who are also highly qualified in specialist environmental sciences, GIS, landscape architecture, farm and land management. That is why they are uniquely equipped to undertake a rivers restoration project more typically undertaken by expensive specialist consultants. Unsurprisingly, government funding for such plans on smaller rivers is sparse.

Rivers can be restored, but it requires a carefully planned holistic approach, so that each action builds on the next as part of a wider process of continual, interconnected and prioritised improvement. This can only be done at a catchment-wide scale.

water
Wild About The Erme River
www.erneriver.org

WATER is holding a public event 'How to Restore the Erme' at The Watermark in Ivybridge on Tuesday, 22nd July, at 6.30pm. Everyone is welcome.

You will hear about the group's many projects and activities and be able to talk directly to individual members of the WATER team during a planned interval.

Then, guest speaker Seb Loram, from the Devon Osprey Partnership, will reveal more about the increasing number of Ospreys making their home in south coast estuaries and how WATER is encouraging them to become resident on the Erme.

Entry is by free ticket. Details can be found by scanning the QR code below or by visiting the 'News' page of the charity's website – www.erneriver.org.



'BOARDING OUT' PAUPER CHILDREN

By Andrew Jewell

The word pauper, an old-fashioned word to describe someone who is very poor, takes one back to Dickensian times when social and economic inequality prevailed.

The early part of the 19th century witnessed a rapid growth in the population and a migration to industrial urban areas. Poor living conditions prevailed, and child labour was sadly commonplace. Many people fell on hard times and became destitute.

Under the provisions of the Poor Law Amendment Act, 1834, also known as the "New Poor Law", the country was divided into Poor Law Unions, grouping individual parishes. These unions were administered by an elected Board of Guardians who were responsible for providing support for the impoverished under a poor relief system. Each union established a Workhouse to accommodate anyone unable to support themselves.

Before 1834, the cost of caring for the poor was paid for by the middle and upper classes through local taxation. Each parish would have its own Poor House. The new Poor Law was meant to reduce this cost and impose a system which would be uniform throughout the country.

A Union Workhouse was a deliberately harsh environment, intended to limit intake to only those who desperately needed help. There were strict rules and regulations

to follow, and families were split up into separate wards for men, women and children. The nearest one to Ivybridge was at Underwood, Plympton St. Mary Union, which formed in October 1836.

Union Workhouses, as well as offering accommodation, provided food and clothing and some schooling for children. In exchange, those who stayed were required to work for several hours each day. Work for the men included heavy manual work such as breaking up stone, or tedious work such as picking oakum, untwisting and separating the strands of old rope to make new. The food was basic and included gruel, soup, bread and cheese. It then followed that only poor people in receipt of relief were defined as a pauper.

Workhouses were certainly not a place for children to thrive, so where possible, they were accommodated in separate schools, taking them from several surrounding workhouses. These schools were often independently run, either by small private establishments or national charities such as Barnardo's. However, where such facilities did not exist, children were

accommodated by families within the community under a practice referred to as 'boarding out', what would be termed as fostering today. Such action helped to de-pauperise the

children in the care of the poor law authorities. It also gave these orphaned, neglected or impoverished young people the opportunity for a better life within a caring family.

In Ivybridge, a Ladies' Committee were entrusted with finding good foster homes for the children under the care of the Local Government Board. The committee included Mrs Anstiss, the wife of the Anglican vicar, Mrs Tanner of Stowford House and later Filham House, and Mrs Morris of Nirvana.

Foster parents undertook to bring up the children in their care as if they were their own. As today, there were childless couples longing for offspring as well as other good Samaritans answering the appeals of the Boards of Guardians.

Locally, there was a case of three brothers aged four, seven and nine who found a convenient home with a farmer and his wife, the family having no boys of their own. The older boys were able to attend the local school.

The boarding out system, whilst providing a stable home environment, also offered the opportunity for the children to mix with others of working class. The intention was that they would forget about their pauper origins and grow up to become good citizens contributing to society.

Once within a new family, the committee ladies

had to regularly check on the welfare of each child, visiting them both in their homes and during the day. The families had to observe the Union rules regarding schooling, cleanliness and attendance at church or chapel.

Regulations existed to prevent exploitation. Generally, foster families were limited to two children, and they could not employ the children for pecuniary or personal profit. Nor were they permitted to 'farm out' or place the children with relatives. Families where the father was engaged in night-work were unable to take in children under these arrangements.

Entering the 20th century, public attitudes towards poverty started to change as the state began to accept more responsibility for welfare. The Local Government Act 1929 officially abolished the system of Poor Law Unions and their Boards of Guardians, transferring their powers to local authorities. Workhouses and the term 'pauper' then disappeared.

The workhouse at Plympton, like many others, continued to provide care for the elderly, infirm, and destitute as a Public Assistance Institution until the National Health Service was created in 1948.



for lots more
local history



www.ivybridge-heritage.org



MILLSWOOD
Day Nursery

**Explore.
Learn. Grow.**



We are proud to have
been graded **Outstanding**
once again by Ofsted.

February 2025



**Call to explore our
space — 01752 698224**

- 0 – 5 year olds
- 8am – 6pm
(7.30am starts available)
- 51 weeks a year
- Fresh home cooked meals

millswoodnurseries.co.uk



Stowford Nursery

Respect





Excellence

Friendship

**We pride ourselves at Stowford Nursery on offering children a
stimulating environment with enriching learning activities.**



**We explore and
learn through play**

-  Jump in the tyres
-  Dig in the sandpit
-  Hunt for bugs
-  Play in the mud kitchen



We are a term time only setting with
wrap around options
8.00am-5.45pm.

We have a highly qualified,
experienced and committed team
who provide the best start to
a child's educational journey.

Call to arrange a visit today!

01752 894163

www.stowford.devon.sch.uk
Stowford School, Exeter Road,
PL21 0BG

FULL CIRCLE MOTORS

Mechanical Repair, MOT's and Servicing on all makes of Cars and light Commercial



Class 4 - Cars



Class 5 - MPVs



Class 7 - Vans

Servicing & Repair | Diagnostic Services
Air Conditioning | Key Cutting & Programming
Mot's | Courtesy cars available

HERE WHEN YOU NEED US

Ermington Road, Ivybridge, Plymouth, PL21 9DG
Tel: **01752 698282** Fax: **01752 698291**
E-mail: **info@fullcirclemotors.co.uk**
Find us at **www.fullcirclemotors.co.uk**



We also cut and program ignition keys
Both standard and laser key cutting machines, our state of the art innovative
automobile key cutting solution for any vehicle. Ask us more for details



● THE ERME PRIMARY

There was sunshine and smiles at The Erme Primary's sports day.

Pupils, staff and families came together to enjoy a brilliant sports day under glorious sunshine. The day was a celebration of sport, teamwork and community.

The morning was packed with a variety of fun activities. Children took part in bench ball, dodgeball, and frisbee golf, rotating around the field and school to try each sport.

There was something for everyone, and the focus was on participation, enjoyment and giving things a go.

Alongside the physical games, the children also enjoyed making colourful team banners, adding a creative splash to the



morning.

After lunch, families were welcomed onto the school field to join in the fun and cheer on the children during the afternoon races. From speedy sprints to more light-hearted novelty relays, there was something for all to enjoy. The children gave it their all and showed

W G Friend & Son Ltd

More than just an 'ordinary' garage

FRIEND'S GARAGE

8-10 Stowford
Business Park
Ivybridge
01752 690584

MOTs • Servicing • Repairs • Brakes • Tyres • Exhausts
MOTORBIKE & SCOOTERS

Sales • Repairs

CYCLES FOR ALL THE FAMILY

Servicing • Repairs • Accessories • Clothing



FRIEND'S SERVICE STATION

Leonards Road,
Ivybridge
01752 690717

Petrol • Car wash • Jet wash • Vacuum

Premier CONVENIENCE STORE

Essential groceries • Wine, beers & spirits

Hot food including Devon pasties and pies

Hot coffee • Collect BP points





fantastic sportsmanship – cheering one another on, celebrating effort as much as success, and creating a wonderfully supportive atmosphere.

The whole day had a warm, joyful feel, made even better by the presence of so many parents and carers who came to show

their support.

The school offers a huge 'thank you' to all those who made the day possible, and to the families who came to support. Most of all, well done to the children for their energy, effort and wonderful team spirit.

It was a sports day to remember!

GROUP SUPPORT FOR PEOPLE WITH BREATHING DIFFICULTIES

Do you have breathing difficulties?

Perhaps you have a diagnosis of COPD, bronchitis, emphysema, pulmonary fibrosis or asthma. If you do, you do not need to feel alone.

Devon Breathers offers advice and guidance, exercise, speakers and the chance to meet others for peer support.

The group meets at the Yealmpton Community & Resource Centre, Stray Park, Yealmpton (PL8 2HF) on the second and fourth Tuesday of the month, 1-3pm.

For more information,



contact Jim Shaylor on 07780 812462 or 01548 810562. Alternatively, email devonbreathers@gmail.com.

There is free parking at the centre. A donation of £3 per session is requested to help cover the cost of hall hire and refreshments.

Mon-Fri: 8am-6pm Sat: 8am-12.30pm | billlomasmotorservicesivybridge.co.uk | billlomasmotorservices@btconnect.com

BILL LOMAS MOTOR SERVICES

Blachford Road, Ivybridge // Tel: 01752 896 107



Impeccable customer service



Providing complete care



Courtesy car & collection available

30 YEARS' EXPERIENCE

Bill Lomas Motor Services is your one-stop-shop in Ivybridge for all of your vehicle servicing and repair requirements.



- Servicing • Repairs • MOTs • Tyres • Diagnostics
- MOT chassis repairs • Gearbox repairs • 4-wheel laser wheel alignment

NEW LOCAL HISTORY STORYTELLERS FOR BRENT

By Steph Bradley

Founder and manager, South Brent Storytellers and Archive

Last month, people got to visit the fourth annual exhibition by South Brent Storytellers and Archive. The theme was 'Then and Now – The History of My House' to commemorate the final sale of the Marley Estate in 1925.

This historic event marked the end of large land ownership in Brent and Rattery and saw the beginning of tenant farmers owning their land for the first time, and many ordinary people becoming first-time homeowners.

Along the Corridor Gallery in South Brent's Old School Community Centre were to be found panels of images of local homes over the past 100 years, along with stories of the people who lived in them, and maps of the original Marley estate. There

were also six special panels created following research carried out by local people who had entered The History of My House Competition for the inaugural Local History Storytellers annual prize.

The prize was jointly won by Laurette Guest and Mandy Haley for their work on Chapel Mews – once an old Slaughter house – and Farnborough, a house once rented by the well-known local Victorian photographer, painter and postcard maker WR Gay.

Local historian Greg Wall helped judge the entries, along with Lyn Dent and Ginny Jones.

The prize was the coveted Andy Jones Memorial Cup which Laurette will get to keep for one year. Andy was a founder member of South



Local History Storytellers winners Laurette Guest (left) and Mandy Haley (right) with local historian Greg Wall

Photo: Phil Dean

Brent Storytellers and Archive, working as part of the primary school project, teaching local children the skills they need to become skilful storytellers, until his sad death a few years ago. A cash prize of £25 was also awarded to Mandy.

If you missed the exhibition you can see it displayed again during our autumn talks:

■ Saturday, 27th September: Black Hall with Marigold Seager-Berry, 2pm at the Old School Hall.

■ Saturday, 25th October: Syon Abbey at Marley – video

footage with the archive team, 2pm at the Old School Hall.

■ Friday, 5th December: The Elmhursts at Dartington – film screening and Q&A with Peter Nicholson, 2pm at Rattery Village Hall.

Tickets will be on sale from Artworks in the village up to a month before each event.

● If you are interested in the history of houses in South Brent, the archive will be publishing a book on the subject. If you'd like to research and write a chapter, contact us with your proposal.



ABOVE: Greenbank with Farnborough in the centre c1920s South Brent Archive

RIGHT: Greenbank with Farnborough in the centre, 2025

Mandy Haley Collection



Chapel Mews and Wesley Barn being constructed from the old Slaughter House c1980s and (right) the property today Laurette Guest Collection



THE ART OF LETTING GO: A GENTLE JOURNEY TOWARD EMOTIONAL FREEDOM

Letting go doesn't mean giving up – it means allowing space to heal, grow and move forward at your own pace.

It's about choosing to release the weight of anger, regret, or resentment when you're ready, for emotional well-being.

1. Gently practice mindfulness and acceptance

Notice your thoughts and emotions without trying to change them. With gentle curiosity, see them as passing experiences, not reflections of your worth. This can soothe emotional pain and help you respond with greater clarity and care.

2. Journal what you are ready to release

When feelings feel too heavy to carry, writing can offer relief. Whether you keep a private journal or write a letter you never send, putting your thoughts to paper can bring clarity and comfort. It's a space just for you – to express, reflect and slowly unburden what's within.

3. Offer yourself the compassion you deserve

Letting go can be tender, vulnerable work. Be kind to yourself as you navigate it. Remind yourself, "I'm allowed to feel this," or "I'm doing the best I can." Compassion is not a luxury – it's a necessity in healing.

4. Visualise the act of release

Imagine holding your pain gently in your hands, then releasing it like a balloon rising into the sky. You don't have to force anything – just notice how it feels to imagine letting go, even for a moment.

5. Clear with care

Clearing physical clutter can also ease mental clutter. By creating a calmer environment, you bolster focus, reduce stress and support a clearer mindset.

Letting go isn't linear. It unfolds over time, in quiet moments of courage and compassion. With each small step, you create room for peace, healing, and for something new to begin.



COLLABORATIVE
COUNSELLING

Providing Holistic Tailored Counselling for a range of areas, including:

Anxiety, Depression, Stress, Grief, Loss & Trauma.

Working collaboratively to support you through whatever challenges you are facing.

Nicky Jilks MNCPS (Acc)

Local Qualified Accredited Counsellor

07303 044 787

www.collaborativecounselling.co.uk

2 Pynewood House, 1A Exeter Road Ivybridge PL21 0FN



Living with memory problems or mild to moderate dementia?

Ivybridge Cognitive Stimulation Therapy Group (CST)

Cognitive Stimulation Therapy helps through:

- Improving memory, communication, concentration & thinking skills
- Increasing confidence & wellbeing
- Helping to delay cognitive decline

Thursday afternoon 1.30 - 3.30pm

at St John's Church Hall

Blatchford Road, Ivybridge PL21 0AD

To find out more about CST, the group and how to book a place please contact Kathrine

m: 07899 993134

kathrine@conversationworks.co.uk

www.conversationworks.co.uk



Community Interest Company
Registered Company Number 14087082

Put your feet in safe hands

Ivybridge Podiatry

@ Nature's Larder
10 Glanvilles Mill • Ivybridge
01752 426075 / 07369 223733

Victoria Wanyu
BSc(Hons)
MRCPod

www.ivybridgepodiatry.com | feet@ivybridgepodiatry.com

Moor Podiatry



Louise Hinds

Podiatrist
MRCPod/H.C.P.C. Reg

Home visiting practice

Specialising in High Risk Patients (Diabetic footcare).
Diabetic wound care/post surgical wound care.
Routine Care (Nails, Corns, Callus).
Vascular Assessment.

30 years NHS experience

- Onward referral/GP letter.

Treatment in the comfort of your own home.



Tel - 07518 789992





HELEN JONES
BSC (HONS)
MRCPOD

01752 880819

SOUTH DEVON FOOT CLINIC

PODIATRY / CHIROPODY SERVICES

Helping you take the right steps to better foot health...

15 Fore St, Yealmpton, Plymouth PL8 2JN
01752 880819 | www.southdevonfootclinic.co.uk



LISA'S MOBILE HAIRDRESSING



*All your hairdressing
needs in the comfort
of your own home*

Call 07769 206644

PRIVATE EAR WAX REMOVAL

Your local ear care practitioner



Qualified professional
ear care practitioner.

Micro-suction wax
removal.

Irrigation wax removal.

View the obstruction
using the latest ear
camera technology.

Ear care advice and
after-care.

DBS checked.

CPD member.

Fully insured.

A bespoke service in the comfort of your own home

Telephone Clear Ears South Devon on 07709 146644 | Email amanda.wain@email.com

A Confident Smile, A Confident You!

Discover the
Lasting Benefits of
Quoris(Chrome)
Implants!

- ✓ Feel Like Your Natural Teeth
- ✓ Long Lasting
- ✓ Comfortable Chewing
- ✓ No Food or Drinking Restrictions

Book your consultation today
for only **£801**

Call us on 01752 661631



Experts in
Neurology and
MusculoSkeletal
Physiotherapy



Premier Physiotherapy Clinic in Ivybridge

We pride ourselves
on providing quality
physiotherapy when it
is needed.

All our physiotherapists
are highly skilled
and registered
with the HCPC and
Chartered Society of
Physiotherapy.

Services

We offer a variety
of physiotherapy
treatments

- Manual Techniques
- Treatment of pain
- Mobility
- Rehabilitation
- Physiotherapy
reports

Contact us

South Hams Physio
56b Fore Street,
Ivybridge
PL21 9AE

01752 691604

info@southhams

physio.co.uk

southhamsphysio.co.uk

Experience Premium Quality At Home Care with Visiting Angels

Visiting Angels provide exceptional
assistance and personalised care for
your loved ones to foster independence
and enhance quality of life.

KEY SERVICES :

- Companionship
- Meal preparation and planning
- Light housekeeping
- Medication reminders
- Assistance with mobility
- End of life care
- Post hospital stay care
- Personal care



Visiting Angels South Devon

Call 01752 422105

southdevon@visiting-angels.co.uk

VisitingAngels 
QUALITY AT HOME CARE

Upcoming walks for Ivybridge Walking Club are as follows (all Sundays):

- 13th July
- 27th July
- 10th August
- 24th August

Check out the Diary page on the club's website – ivybridgewalkingclub.com – for more information.

Ivybridge Flower Club's monthly meeting again saw five lucky winners take home some beautiful arrangements by regular demonstrator, Churchstow florist Lisa Davis.

Lisa amazed attendees with the sheer number of flowers she could fit into one container! Her arrangements were entitled 'Early Summer' and featured a variety of unusual flowers in all colours and shapes. The flowers were all fabulous quality and gorgeous!

Why not join us and come to Ivybridge Flower Club for a visit? Visitors are most welcome (£10) and raffle tickets and refreshments are available. The club meets every second Monday in the month at The Bridge (Salvation Army), Leonards Road, at 7.30 pm.



Members of **Ivybridge Trefoil** had beautiful weather in June for a day out to Bowerman's Cottage (a cottage on Dartmoor owned by Devon Guides). Everyone contributed to a veritable feast for lunch, then some members walked on the moor. It was a great day of fun, sun and fellowship.

Ivybridge Theatre Company have a busy year ahead, with various productions and events planned.

Their next production, *Life and Beth* by Alan Ayckbourn, which is a two act tragic-comedy, has been confirmed for 7th and 8th November at The Watermark.

They are also looking forward to organising some fun events such as an 'open evening', drama workshops and murder mystery nights.

If you are looking for a new challenge and ever wondered what Ivybridge Theatre Company is all about, now is the time to find out. Whether you're a

first-timer, a seasoned performer, or have an interest in drama including back-stage activities, the group is looking for new members to join their friendly, community group. Why not go along to an 'open evening' on Wednesday, 16th July, at 7.30pm in Chapel Place, off Fore Street in Ivybridge?

Simon Dell is the guest speaker at the next Ivybridge U3A meeting on Monday, 21st July, at The Watermark (2pm).

An ex-policeman, Simon is a Dartmoor National Park guide and a member of the Police History Society, the

Devon and Cornwall Police Museum. He has published books on policing, Dartmoor Prison and in 1997 was awarded an MBE for his work with the Dartmoor Rescue Group and Tavistock community.

Simon will talk about Sermon's in Stone, Rev'd Bray's bardic boulders. If you follow the Cawsic River you might see carvings and dedications to Spencer, Burns, Shakespeare and Milton. Simon's talk describes the story of these stones and the intriguing life of Edward Atkyns Bray, the Vicar of Tavistock.

Ivybridge U3A meets on the third Monday afternoon of each month at The Watermark.

South Hams Authors Network's next general meeting is on Wednesday, 16th July, at the Imperial Inn in Ivybridge (7.30pm)

The meeting will include news update, a short talk about audio books and some book readings from members.

All welcome. Free entry,

There will be no meeting in August, but will resume in September.



COFFEE SHOP

Serving a variety of hot and cold drinks, handmade cakes, traybakes, scones and teacakes, cooked breakfast and lunch selection. Wednesday Specials and Fish Friday. Lots of seating inside and out.

01752 892 220 / info@ivybridgewatermark.co.uk / ivybridgewatermark.co.uk

**PALLADIUM
BUILDING SUPPLIES**

Sadolin®

Superior Wood Protection



Blair Road Ivybridge PL21 0UR tel 01752 896140 ivybridge@palladiumbm.co.uk

www.palladiumbm.co.uk

**KPT™ TIMBER
& BUILDING SUPPLIES**

"Pour yourself a brew and we'll get it to you!"

01752 393939 www.kpttimber.co.uk

Local family business - serving Plymouth, Ivybridge, South Hams and Tavistock areas



SALE OF IMPRESSIVE COLLECTION OF CLOCKS

Plymouth Auction Rooms is delighted to present for sale, on behalf of the Executors, The Nigel Trevelyan Collection of Cornish Grandfather clocks, dial and carriage clocks, art and antiques.

Nigel Trevelyan was a well-respected auctioneer who conducted numerous sales across the West Country, including at his own saleroom. Over the years, he built an impressive collection of clocks.

His charming home on the Lizard Peninsula in Cornwall was filled with treasures – including 22 longcase clocks, over 20 West Country watercolour paintings (featuring several



Victorian works by W H Pike), as well as carriage clocks, dial clocks, pottery, and antique furniture.

The longcase clocks are by notable makers from across Cornwall, including Truro, Falmouth, Redruth,



Bodmin, St Erth, Marazion, St Austell, Helston, and even St Keverne.

The auction will take place at Plymouth Auction Rooms on Tuesday, 22nd

July, at 10.30am. Lots can be viewed online at plymouthauctions.co.uk, or for more information please contact the team on 01752 254740.



- Windows • Doors • Bi Folding Doors
- Composite Doors • Patio Doors
- Conservatories • Porch
- Conservatory Roof Replacement
- Misted/Broken Glass
- Hinges, Handle and Lock Replacement

Guaranteed for 10 Years
Wide Range of colours

Tel: 07766 202 091

www.southhamsdoubleglazing.co.uk f
email: southhamsdoubleglazing@yahoo.co.uk

South Hams Double Glazing, 37 Torne Close, Ivybridge, PL21 0BX



LOGIC ELECTRICAL & FIRE

NEED A RELIABLE ELECTRICIAN?

PROFESSIONAL. RELIABLE. QUALIFIED.

ABOUT US

Logic Electrical & Fire LTD is a fully insured, Napit and TrustMark-endorsed company with 17+ years' experience serving South Devon. Founded on military values of discipline, punctuality, and trust, we offer reliable domestic and commercial electrical services, including fire safety systems. We provide free quotes and transparent pricing, with a strong focus on safety, quality, and professionalism. Contact us today for service you can trust.

OUR SERVICES

- ✓ House rewire full & partial
- ✓ Consumer unit upgrade
- ✓ Sockets & lighting
- ✓ Outdoor power & lighting
- ✓ Landlords EICRs
- ✓ Smoke alarms

WHY CHOOSE US?

- ✓ NAPIT EAS accredited
- ✓ Trustmark endorsed
- ✓ Fully insured
- ✓ Free quotation

CONTACT US
office@logic-electrical-fire.com



07361 494763
07495 656266



IVYBRIDGE BREWING CO

Come and Visit Ivybridge's Own Brewery and Taproom

LOCATED ON THE BANKS OF THE RIVER ERME

We are a social enterprise that changes the lives of people with learning disabilities and autism.

See where we brew our award-winning beers and meet our wonderful team.

**VISIT OUR NEW TAPROOM.
TASTE OUR BEERS.
BUY BEER FROM OUR SHOP.
COME TO OUR FOOD EVENTS.**

WE LOOK FORWARD TO WELCOMING YOU!

 GREAT BEER CHANGING LIVES  Find us at: 3, Glanvilles Mill Ivybridge, PL21 9PS



For all your glass and glazing requirements

We are now recognised Installers of the Sure Flap Cat Flap.

We also supply and fit Staywell Cat Flaps & Pet Flaps.

cat flaps...

A pet door is found to be convenient by many owners of companion animals, especially cats, because it lets them come and go as they please, reducing the need for pet-owners to let or take the pet outside manually, and curtailing unwanted behaviour such as loud vocalisation to be let outside, scratching on doors or walls, and excreting in the house. They also help ensure that a pet left outdoors can safely get back in the house in the case of inclement weather.

Stop unwanted animals entering your home and give your pet their own door key.



Free Estimates call

01752 769832 or 07846 475217



I FIX I REPAIR I REPLACE

Multi-skilled career tradesman

33 years' experience – established 1990

Friendly, honest advice

Fully insured



Highest award of 5 Gold Crowns for quality of work, service and value for money, by Trading Standards

BACK TAKING ON NEW JOBS

ROOFLINE MAINTENANCE

Soffit | Fascia | Guttering
Dry Verge installation

PLUS
**DEPENDABLE
MAINTENANCE
SOLUTIONS**

in and around the home

• No job too small •

Probably one of the best in Ivybridge for quality work and attention to detail. Photos of work provided to show job is done correctly.

**NO
VAT
ON ANY
WORK**



David Walrond

www.wareandtare.co.uk

HAMMER AND MOW



FENCING/CARPENTRY AND GARDEN SERVICES

- ▶ FENCING
- ▶ GATES MADE TO MEASURE
- ▶ CARPENTRY
- ▶ HEDGE CUTTING
- ▶ GRASS CUTTING
- ▶ GARDEN MAINTENANCE

CONTACT 07938 996615

 Find us on Facebook



- * qualified
- * fully insured
- * free quotes
- * local

WARE & TARE

PROPERTY CARE

LONG ESTABLISHED IVYBRIDGE COMPANY

01752 473528 or 07769 974152



South Hams

Accounting
by Simon Jilks FCCA

Your Local Qualified Accountant

- Business Accounts and Tax
- New Business Startup
- Tax Planning
- Personal Tax Returns
- Payroll and Bookkeeping

ACCA

☎ 07726 798 358

✉ simon@southhamsaccounting.com

🌐 www.southhamsaccounting.com

LOCAL EXPERTS

DO I NEED A WILL AND A LASTING POWER OF ATTORNEY?

Most people know the importance of a Will but fewer are aware of Lasting Powers of Attorney.

Of those that are, many are unclear of the distinction between the two and some assume that because they have a Will, they automatically have some kind of power of attorney.

What is the difference?

A Lasting Power of Attorney is actually quite different to a Will.

A Will does nothing until you die. Then, it tells those left to deal with your

GARD & CO

estate exactly what your wishes were and what you intended to happen with your assets. It protects the people you want to benefit from your assets and wishes.

A Lasting Power of Attorney is a document that is intended to come into effect whilst you are alive but no longer able to deal with your assets and/or to look after yourself properly. It gives someone you trust the authority to make decisions on your behalf and in your best

We visit you in your own home for your convenience and privacy



Willwritersservices.co.uk

Member Of Society Of Will Writers

We are a long established, local, family run business, all professional, qualified and fully insured

WILLS ~ LASTING POWER OF ATTORNEY PROBATE ~ PROPERTY PROTECTION TRUSTS

EVERYONE NEEDS A WILL

Please do not think that all of your assets will automatically pass to your spouse or children – this often is not the case.

Martin Lewis and most of the financial journalists now advise everyone to take out a Lasting Power of Attorney. This is very important for older people as when in hospital they or their spouses often are not allowed to make decisions, without a LPA the social services step in instead.

Please do not fall for 'free' or cut-priced Will Services. They often come with many conditions and 'add ons'. *Our quotations are our prices.*

**SINGLE
WILL
£245***

As members of the Society of Will Writers we have to adhere to their very strict code of practice



(*without a Property Protection Trust)

Contact us: 01752 770094 / www.willwritersservices.co.uk



interests – while you're still living and breathing.

When you die, the Lasting Power of Attorney ceases, and your Will becomes the relevant document. There is no overlap between the two.

So, do I need a Lasting Power of Attorney?

A power of attorney is vital for anyone – regardless of age – who has money and assets to protect and/or who wants someone

to act in their best interest in terms of healthcare choices should they be unable to make decisions for themselves.

Of course, many people will never need someone to look after them or their affairs and consequently the Lasting Power of Attorney will never be used. It's like insurance in that respect.

But, if the worst happens and you do reach a point in time where you need someone to act for you, it is normally too late to put one in place at that time. It needs to be set up while you have the mental capacity to do so.

With no Lasting Power of

Attorney in place, people would have to go through a lengthy and costly procedure to get court permission to look after you. And those people might not be the people you trust to look after you. So, it is sensible to set up powers of attorney before you need it so that you can forget about it and hope it never has to be used.

The prospect of no power of attorney is also a great concern to anyone with a relative who may at some point need care. It is worth discussing this with them to try to see what arrangements can be made to avoid

difficulties in the future.

Making a Lasting Power of Attorney is straightforward, and it gives reassurance that if you do become incapacitated, for whatever reason, whoever you choose as your attorney can act immediately on your behalf and in your best interests.

You can do this yourself, but if you would like some assistance, the Wills and powers of attorney team at Gard & Co Solicitors would be happy to help – call

01752 648336 or

email enquiries@gardandco.com

Alternatively, scan the QR code to find out more.



Lasting Power of Attorney

If you can't make your own decisions, who will?

Key services:

- Charities
- Commercial
- Conveyancing
- Disputes
- Farming
- Lasting Power of Attorney
- Trusts & Estates

Appoint a trusted person/people to make health and finance decisions on your behalf, and keep your values and priorities at the centre of any decision-making process.

A Lasting Power of Attorney (LPA) is a legal document used if you're temporarily or permanently unable to make your own decisions. It can help avoid lengthy and expensive court applications and limit family disputes, bringing peace of mind.

Call today for your personalised advice.

Accompanying financial services are provided by our sister company **SW Financial Planning**.



Lexcel
Legal Practice Quality Mark
Law Society Accredited

SW Law - for every stage of life
01752 205202 | swlaw.co.uk

SW Law Ltd - This firm is regulated by the Solicitors Regulation Authority (No 558154)

SW Law

ROTARY CLUB'S FUNDRAISING FUN RUNS

Ivybridge Rotary Club is in the process of organising a brand new fundraising event and is looking for some help from the community.

The Flete 10K and Family Fun Day – including 5K and 1K fun runs – will be held on Saturday, 13th September at the Flete Estate. They are looking for people to act as marshals to help with car parking and on the route and local stallholders who would like to attend the event.

If you are interested, contact Paul on 07730 651543 or Nicky on 07725 868767.

THE CONVENIENT WAY TO GET THE THINGS YOU NEED

Imagine needing a power drill for a quick DIY job, a projector for a special movie night, or a tent for a weekend camping trip – but instead of buying these items, you simply borrow them from a friendly local service.

That's exactly what the Share Shed – A Library of Things – offers. With over 350 items in its collection, the Share Shed is all about making life easier, more sustainable and more affordable.

To find out more and browse the full inventory visit shareshed.org.uk.



OPEN DAY AT CLAY FACTORY

Local people are invited to the Redlake Trading Estate between Ivybridge and Bittaford for the very first Clay Factory open day on Saturday, 9th August.

There will be a vibrant mix of stalls, live music and freshly prepared food and drink in a welcoming atmosphere for all ages.

There will also be a car

boot sale, a holistic and wellbeing fair, and creative arts and crafts from local makers.

Visitor entry is free. Stallholders and car boot pitches are just £5.

To book a space in the boot sale or in the holistic or arts and crafts areas, contact Paul by email at HawkmasterUK@gmail.com.

DROP-IN LEGAL CLINIC

Local law firm SW Law is holding a free legal clinic in Ivybridge Library on 22nd July between 2-4pm.

People will be able to get free legal advice at the monthly clinic.

Just drop in, no appointment needed.

ERMINGTON ORAL HISTORY PROJECT

Devon Rural Archive recently started an oral history project in conjunction with the Ermington Local History Group, tapping into people's knowledge and memories of the village.

The first interview was with Richard Hendey, who runs the Plantation House boutique hotel and restaurant in the village.

This beautiful house used to be the Rectory and was where the Reverend Pinwill lived with his family in Victorian times. The Pinwill sisters, Mary, Ethel and especially Violet, were renowned throughout the South West

and beyond for their wood carving skills, and many churches, including Ermington Church itself, bear witness to their expertise.

Richard was asked about the rumour that a secret tunnel exists between Plantation House and Freehamlet, an unusually-named house next to the Church. This might conceivably have functioned as a sort of priest hole when Catholic clergy were persecuted in the 16th and 17th centuries – or even as a way of getting to the Church in inclement weather. Richard provided the following rather cryptic response:

"I love rumours: living in a small village, rumours and gossip are rife, of course, which is a constant source of great amusement, as long as one doesn't take them seriously. I am aware of the rumours and I am possibly aware of the facts behind it.

"I think in this day and age of health and safety, keeping an underground tunnel as an unknown dark secret is probably the safest way to leave it."

To listen to Richard's full interview or to read a transcript visit the Archive; all its oral histories are available on the visitor PC.

Erme Valley Harriers had a successful night at their annual Relay Race, retaining the title which they won last year for the first time, writes Dave Fox.

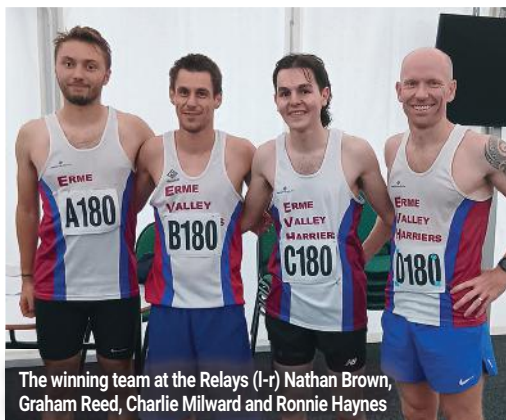
The men's team of Nathan Brown, Graham Reed, Charlie Milward and Ronnie Haynes won the overall race by just seven seconds from a strong Newquay & Par junior team.

Brown (12.52) ran the fastest leg for the Harriers, whilst Haynes (13.22) had to pull back a deficit on the last leg to overtake the Newquay & Par athlete on the long hill to Ivybridge Rugby Club. Reed (13.43) and Milward (13.53) both ran solid legs.

The Harriers ladies' team of Alison McEwing, Jessica Ashworth, Hannah Cox and Sophie Gilvear did well, finishing second ladies team. The Harriers' ladies' vet 35 team went one better, winning their age group. Steph Rogers, Hannah Downing, Lindsay Lane and Alison McEwing, running her second leg of the evening, all did well.

There was a good turnout on the evening as 80 teams took part, with the Harriers entering eight teams.

It has been a busy month for racing, with Harriers travelling far and wide. At the National Inter Counties Fell race in Pen-y-Ghent in North Yorkshire, the 11K race saw athletes for all the counties in the UK, including Devon. Matthew Gilvear finished 35th overall in 52.19 and was first scorer for Devon. Fellow Harrier Chris Prall was 97th in 1.01.14, with the Devon team finishing 11th overall. Becky Prall was 72nd in the ladies' race in a time of 1.17.07 and



The winning team at the Relays (l-r) Nathan Brown, Graham Reed, Charlie Milward and Ronnie Haynes

HARRIERS WIN RELAY RACE

third scorer for Devon.

A few days before this race, Gilvear broke the four minute barrier (3.57.88) for the first time in a 1500m race at Loughborough. He was only four hundredths of a second outside the club U20 record held by former Ivybridge Community College and Erme Valley Harriers athlete Will Battershill.

Several Harriers went to the Giants Head races in Sydling St Nicholas in Dorset for the weekend. The event weekend provides something for all the family, with the Marathon and 10K on the Saturday, a barn dance in the village hall and then the Half Marathon on the Sunday. Lindsey Lane was the only Harrier in the Marathon and did well to survive the searing heat. Lane, in the mainly 'off road' race, finished in a time of 6.29.57.

In the Half Marathon, there were several category winners, with Dave Engledew

1st mv60, Helen Chapell 1st fv50, Alison Engledew 1st fv60 and Carol Hansen 2nd fv60. All these awards were in the Half Marathon, which Jessica Newman also completed.

In the 10K, Andrew Chapell was 2nd mv50 and Ken Summers 1st mv70. Lynne Whitfield, Richard Lane, Francesca Walker, Alan and Jane Makeham also ran.

More locally, at the Race the Tide races at Mothecombe, Dan Adderley had a great run in the 8.5 mile Woodland Trail race, finishing third overall. Phil Adderley



(L-r) Matthew Gilvear, Chris Prall and Becky Prall at the National Inter Counties Fell Race

and Alan and Jane Makeham also completed this distance. In the Long Half (15 miles), Sophia Tolfree did well, whilst Claire Moorcraft tackled the demanding Long Marathon (28 miles),

At the scenic multi-terrain Buckland Bounder (just over six miles), which is part of the summer fair starting and finishing in Buckland Monachorum, Ken Summers (52.34) was the first Harrier home, closely followed by Alison Engledew (54.45), Lindsay Lane (54.47) and husband Richard (57.59).

At a very warm Solstice Fell Race from Merrivale, tackling Staple, Roos and White Tors on a tough but fairly runnable 8.5K loop, the Harriers did well as they took home the team prize, with Chris Prall second (1st mv40), Peter Allen fourth and Charlie Milward eighth (1st U23).

The Burrator Horseshoe Fell Race was also popular, with Chris Prall fourth and second mv40. Sophie Gilvear was fourth and second U221. Jenny Hayes was first fv40, with her team mate Becky Prall third fv40. Ewan Lake, Edward Smith, Justin and Jacob Frost all completed the distance. Young Esme Prall ran in the junior race.

John Riley also remained local, running well in the Rame Head 10.6K Trail Run in the area of the Mount Edgcombe Peninsula. On a hilly course and warm day Riley did well to finish 10th overall in 55.53 and first mv50.

Ken Summers was the Harriers' only athlete at the Run Exe 5K. Summers' time was 25.08.

MONDAY

SOUTH HAMS CITIZENS ADVICE

09:30-12:30 The Watermark. Drop-in consultations every Monday (excluding bank holidays).

SINGING MAMAS

10-11:30 Singing, cuppa & cake in the woods. FREE taster session, £10 after. Term-time. Booking: www.tothewoodsforestschoo.com.

DIGITAL SKILLS

10:00-12:00 Ivybridge Library. Learn basic digital skills with help from a friendly volunteer.

ST JOHN'S TODDLERS

10:30 St John's Church Hall, Blachford Road, Ivybridge. Toddler group for under 5s. Term time only. FFI: call Sheena on 01752 939757.

STAY AND PLAY 10:30-12:00 Ivybridge Library. For children up to 5 years old. No need to book.

COFFEE MORNING

10:30-12:00 The Hub, The Old School, South Brent. Donation. FFI: Contact Susanne, South Brent Caring - 01364 700282. Free/donation.

SOUTH HAMS COMMUNITY ORCHESTRA

10:30 Ivybridge Rugby Club. FFI see www.shco.co.uk £5/session payable termly.

RAMBLERS

WELLBEING

WALKS 10:00 Meet outside The Watermark. FFI: contact Tim 07745 650516.

LUNCH CLUB

12:00-13:15 The Old School, South Brent. Soups/light lunch, a pud & tea/coffee & conversation. Book via South Brent Caring 01364 700282. £5 min donation.

VETERANS PEER SUPPORT GROUP

12:00-14:00 The Farmyard Cafe, Wotter. Contact Trevor Gracey on 07964 319683.

IVYBRIDGE TREFOIL GUILD

First Monday. Please contact Joy on 07813 609317.

U3A GENERAL MEETING

14:00-16:30 The Watermark. 3rd Monday of month (excluding bank holidays). FFI: 01752 658164/ivybridge.u3a@gmail.com.

POLICE DROP IN SESSION

14:30 Ivybridge Library. First Monday of month.

RAF AIR CADETS

19:00-21:00 Cadet Centre, Filham Park. FFI: cc.339@rafac.mod.gov.uk.

ERME WI 19:30 The Bridge, Leonards Road. 3rd Monday of month. All welcome. FFI: contact 07779 534853.

IVYBRIDGE FLOWER CLUB

The Bridge, Leonards Road. Every second Monday. FFI: contact Lindsey Reid 01752 894579.

SEQUENCE DANCING CLUB

19:30-22:00 Lee Moor Public Hall. 01752 892741.

TUESDAY

WARM SPACE FOR ALL

10:00 St John's Church Hall, Blachford Rd. Every Tues. Contact Sheena 01752 939757.

LITTLE FISHIES PARENTS AND TODDLERS GROUP

09:30-11:00 The Bridge, Leonards Road. Term time. £2 per family. FFI: 01752 896974/ ruth.j.hammond@salvationarmy.org.uk.

RAMBLERS WELLBEING WALKS

10:00 Every Tuesday. Meet at Ivybridge Leisure Centre. FFI: Lisa Alford - 07582 350349 / lisa.alford@activedevon.org.

TODDLERS 10:00-11:30 Ivybridge Baptist Church. Term times only. 07516 085121 / iebc@hotmail.co.uk.

SO SOCIAL SNAPS

13:00 Informal photography group. Phone or camera. Free. FFI: search FB/07929 923649.

IVYBRIDGE COMMUNITY HUB

10:30-12:00 Ivybridge Library. www.innercompassguide.com/community-hub.

IVYBRIDGE FOOD CLUB

12:00-14:00 St John's Church Hall, Blachford Road Every Tuesday. The Community Cafe is open from 12-2pm, serving homemade food, and shopping, to prevent food wastage, is from 1-1.30pm. Everyone welcome.

IVYBRIDGE PROBUS CLUB

From 12:00 Rose & Crown, Yealmpton. 07780 150750 / rnonoven@icloud.com.

TUESDAY LUNCHES

12:15-13:30 Ivybridge Methodist Church. Children welcome.

IVYBRIDGE ARTY CRAFTY GROUP

13:30-16:30 Scout and Guide HQ, Blachford Rd. FFI: contact Gerry 01752 690176 or Hazel 01752 892438.

MEN'S TENNIS & PICKLE BALL

FOR MENTAL WELLBEING 14:30 every Tuesday. South Devon Tennis Centre.

5th IVYBRIDGE RAINBOWS

17:30-18:30 Ivybridge Methodist Church. Contact Jenny 01752 894265 / email ivybridgerainbows5th@outlook.com.

3rd IVYBRIDGE BROWNIES

18:00-19:30 Ivybridge Methodist Church. Contact Jenny 01752 894265 / 3rdivybridgebrownies@gmail.com.

CUBS

18:30-20:00 Scout Hut, Leonards Road car park. FFI: 1stivycubs@gmail.com or 1stivygsl@gmail.com.

ERME VALLEY HARRIERS

- **SENIORS TRAINING** 18:00-19:00 Ivybridge Rugby Club. FFI: Keith Reed 01752 893573/ernevalleyharriers.co.uk.

ARMY CADETS

19:00-21:00 Cadet Centre, Filham Park. FFI: 1399boyn@armymail.mod.uk.

IVYBRIDGE COMMUNITY CHOIR

19:30-21:30 Douro Court. southdevonsingers@gmail.com / 07915 053950.

IVYBRIDGE & DISTRICT CAMERA CLUB

7.30pm on two Tuesdays per month alternating between Zoom and Bittaford Jubilee Hall. www.ivybridgecameraclub.org.

IVYBRIDGE YOUNG FARMERS

19:30 The Hunting Lodge, Cadleigh Lane. First Tuesday of the month. FFI: www.facebook.com/IvyYFC/ call 07472904700.

WEDNESDAY

IVYBRIDGE CARING VOLUNTEERS

09:30-12:00 The Watermark. Drop in for a chat about donating a couple of hours of your time for elderly people in the community.

MUSTARD TREE CANCER CAFE

9:30-12:30 Ivybridge Methodist Church. Alternate Wednesdays. Drop in. FFI: 01752 430060 Facebook - Mustard Tree Macmillan Cancer Support.

SO SOCIAL SPANISH

10:00 Rochelles River Cafe. Informal conversation group. Any level. No cost. FFI: 07929 923649.

WALK & TALK 10:30

Accessible 30+ min walk for those with limited mobility or wishing for company, with tea/cake at the end at The Hub, South Brent. Drop-in. Free/donation.

LITTLE STARS

10:30-11:30 Ivybridge Library. Aimed at pre-school children looking at numbers, colours and letters. No need to book.

READ AND REMINISCE

10:30-12:30 Ivybridge Library. Listen to poems and stories read aloud. Share your memories over a cup of tea or coffee. Free. Contact

Ivybridge Library on 01752 893140.

COMMUNITY CAFE

11:00-15:00 The Bridge, Leonards Road. FFI: ivybridge@salvationarmy.org.uk.

SO SOCIAL - COFFEE MORNING

11:00-12:00 The Bridge Community Cafe. Everyone welcome. Facebook: So Social Ivybridge / call Shirley Weeks on 07934 999404.

IVYBRIDGE FOODBANK

13:00-15:00 Ivybridge Methodist Church. Open to all. FFI: [www.ivybridge.foodbank.org.uk/](http://www.ivybridge.foodbank.org.uk/email_info@ivybridge.foodbank.org.uk/) 07706 457336. Food donations welcome 10am-12pm.

SO SOCIAL UKRAINIAN

SUPPORT GROUP 13:00 The Bridge, Leonards Road. Last Wednesday of the month. FFI: search Facebook - So Social Ivybridge/phone 07934 999404 / connector@southhamscvs.org.uk.

THE BRIDGE STROKE GROUP

13:30-15:30 Ivybridge Town Hall. Second Wednesday of the month. For details call 01752 896931.

IVYBRIDGE MEMORY CAFE

14:00-16:00 The Watermark. Fortnightly for entertainment, refreshments and a chat together. If your loved one is suffering from cognitive impairment give us a call on 07498746944.

FRIENDS DAY WEDNESDAY

14:00-16:00 The Old School, South Brent. Friendly fun group, games, quizzes, singing, themes, craft and more, open to all, particularly with dementia. FFI: Susanne on 01364 700282 for a space. Free/donation.

IVYBRIDGE BLOOMERS

14:00-16:00 The Leat Garden, off Fore Street. Search Facebook - Ivybridge Bloomers, see ivybridgebloomers.community or phone 07934 999404.

KNITTING GROUP

15:00-17:00 The Hub, South Brent. Friendly fun group, adults and children with an adult welcome, all abilities. Free/donation.

1st IVYBRIDGE GUIDES

18:00-20:00. Timings and location can vary depending on the activity. FFI: contact Leah Parsons ivybridgeguides@hotmail.com.

4th IVYBRIDGE GUIDES

18:30-20:00. The location will depend on the activity. FFI: call Sharon on 01752 698656, fourthivybridgeguides@outlook.com.

IVYBRIDGE ROTARY CLUB

20:00 The Bridge Cafe. Fortnightly on the 2nd and 4th Wednesday of the month. FFI: IvybridgeRotary@gmail.com or see www.facebook.com/IvybridgeRotary.

ERME VALLEY RANGERS 18:30-20:30. Part of Girlguiding for girls aged 14-18. Location will depend on the activity. For information call Sharon on 01752 698656.

ROYAL BRITISH LEGION 19:00-21:00 Ivybridge Constitutional Club. FFI: contact Dermot Roberts on 01752 691645.

IVYBRIDGE THEATRE COMPANY 19:30-22:00 Chapel Place Community Centre, off Fore Street. FFI: 01752 893308 / howard-davis@live.co.uk

SONGBIRDS Women's singing circle at Lukesland 19:00-20:30. 1st & 3rd Weds. FREE taster, then £10. Book at - tothewoodsforestschoo.com

THURSDAY

IVYBRIDGE CARING VOLUNTEERS 09:30-12:00 The Watermark. Drop in for a chat about donating a couple of hours of your time for elderly people.

RAMBLERS WELLBEING WALKS 10:00 Every Thursday. Meet Ivybridge Leisure Centre. FFI: contact Lisa Alford - 07582 350349 / lisa.alford@activedevon.org.

COMMUNITY CAFE 10:00-15:00 The Bridge, Leonards Road. ivybridge@salvationarmy.org.uk.

MASS 10:00 St Austin's Priory.
BOUNCE & RHYME 10:30-11:00 Ivybridge Library. For children under 3 and their carers. No need to book. Suggested donation 50p per child.

SHARE SHED Borrow hundreds of useful items at a low cost. Glanvilles Mill car park, Ivybridge, 10am-12noon. FFI: www.shareshed.org.uk, call 07516 908237 or info@shareshed.org.uk.

BOOK GROUP 11:00 Every 2nd Thursday at Ivybridge Library. Pop into the library to find out more.

SONGS & STORIES 13:15-14:45 Term time for babies & children under school age. Ivybridge Methodist Church. Contribution of £2 requested.

SO SOCIAL IVYBRIDGE - PEER SUPPORT 14:00-15:00 The Bridge, Leonards Road. Free peer support group for people living with long-term medical conditions and

disabilities. FFI: Facebook: search So Social Ivybridge or call 07934 999404.

KNIT AND NATTER 14:30-16:30 Ivybridge Library.

1st IVYBRIDGE RAINBOWS 16:10-17:20 St John's Church Hall. FFI: contact Jackie: firstivyrainbows@live.co.uk.

2nd IVYBRIDGE RAINBOWS 17:10-18:20 St John's Church Hall. FFI: firstivyrainbows@live.co.uk.

ERME VALLEY HARRIERS - JUNIOR TRAINING 18:00-19:15 Ivybridge Community College. For those aged 8+ of all abilities. FFI: 01752 893573 www.ernevalleyharrisers.co.uk.

SO SOCIAL STITCHES The Imperial 18:00-21:00. FFI: sosocialivybridge@gmail.com.

VOLUNTEER POLICE CADETS 18:30 Ivybridge Community College (term time only). £3/week. dc.police.uk/cadets/joiningcadets@dc.police.uk.

SCOUTS 19:00-21:00 Scout Hut, Victoria Park, Blachford Road. Contact ivybridgescouts@gmail.com or 1stivygsl@gmail.com.

ARMY CADETS 19:00 Cadet Centre, Filham Park. FFI: contact Abigail Boyne 0n1399bbyn@armymail.mod.uk or visit armycadets.com/

TABLE TENNIS 19:15-20:45 Peverell Hall, Ivybridge Community College. FFI: contact Alan on 07712 896185 or ivybridgegett@aol.com.

CROOKED TEMPO SAMBA BAND 19:30-21:30 Ermington Church. Every Thursday. Session fees are £3 per person/per week.

FRIDAY

LITTLE FISHIES PARENTS AND TODDLERS GROUP 09:30-11:00 The Bridge, Leonards Road. Term time only. £2/session/family.

BUSY BEES 10-12:00 Parent & child group (18m-5yrs) £12/session. Term-time. Booking: www.tothewoodsforestschoo.com.

SHARE SHED Borrow hundreds of useful items at a low cost. Old School Community Centre, Totnes Road, South Brent, 10am-12noon.

IVY CRAFTERS 10:00-12:00 Endsleigh Garden Centre. £10 per session, all materials included. Call 07706 317825 or theivycrafters@gmail.com.

CATHOLIC WOMEN'S LEAGUE

11:00 St Austin's Priory. First Friday of each month. All welcome.

COMMUNITY CAFE 11:15-15:00 The Bridge, Leonards Road. ivybridge@salvationarmy.org.uk.

ART FOR CALM 13:00-14:30 Every 2nd Friday. Ivybridge Library. Word art and doodling 'accidental' art therapy.

RAMBLERS' WELLBEING WALKS SOUTH BRENT 14:00 Every Friday. Walks start at the junction of Station Approach and Hillside. Scenic, friendly and varied walks of around 90 minutes (level 3). Then drinks and chat at the Station House.

PAGE TURNERS First Friday of the month, 2-3pm, Ivybridge Library. An hour of talking about our favourite things - books! FFI: call Ivybridge Library on 01752 893140.

WISE AND WONDERFUL 14:30-16:00 Ivybridge Methodist Church. A fellowship group open to everyone. £1 per person. Contact Val 893614, Maureen 945799, Sue 896444, Carole 894676, Christine and David 892858, Judy 894829.

ERME VALLEY HARRIERS - SENIORS TRAINING 18:00-19:00 Social run for all abilities. Contact Keith Reed - 01752 893573 / ernevalleyharrisers.co.uk.

THE BRIDGE PROJECT YOUTH CAFE 18:30-22:00 The Bridge, Leonards Road. Drop-in evening. Free. 6.30-8pm for Years 6, 7 & 8. 8.30-10pm for Years 9 & above (up to 18). Call Elis Norton: 07966 911560/admin@ivybridge.yfc.co.uk.

RAF AIR CADETS 19:00-21:30 Cadet Centre, Filham Park. FFI: cc.339@rafac.mod.gov.uk.

SATURDAY

IVYBRIDGE ARTISAN MARKET 09:30-13:00 The Watermark. First Saturday of the month. ivybridgeartisanmarket.co.uk.

COFFEE MORNING 10-12:00 South Brent Methodist Church School Room. First Saturday of month. All welcome

THE STORE - IVYBRIDGE'S REPAIR CAFE + SHARE SHOP 10:00 Makers Mews, Harford Road, Ivybridge. Final Saturday of each month.

LEGO CLUB 10:30-12:30 Ivybridge Library. All ages welcome. No need to book. Suggested donation 50p per child.

SO SOCIAL - COFFEE MORNING 11:00-12:00 The Bridge Cafe. Everyone welcome. Facebook: So Social Ivybridge or phone 07934 999404.

THE ART PLAYGROUND 11:00-14:00 The Clay Factory. First Saturday of the month. Community art making for all ages, adults and children. Free. jamilajamilahanan.com.

COMPASSIONATE CAFÉS Bereavement support café, listening, friendship and cake! Open to all. 10:00-12noon, 2nd & 4th Saturday of month, Chapel Place, Ivybridge. 10:00-11:30 3rd & 4th Saturday of month, The Old School Community Centre, South Brent.

MESSY CHURCH 14:00-15:30 The Bridge, Leonards Road. Second Saturday of each month. Suitable for ages 3-10. ivybridge@salvationarmy.org.uk for details.

SUNDAY

FAMILY WORSHIP 10:30 Ivybridge Methodist Church. Lively family worship with activities for all ages of young people. Contact Pam Montgomery imcbookings@gmail.com or 01752 894083.

SALVATION ARMY SUNDAY WORSHIP 10:30-10:30 The Bridge, Leonards Road. FFI: ivybridge@salvationarmy.org.uk.

MORNING WORSHIP 10:30 St John The Evangelist. One hour service followed by refreshments. Contact Paul Hincley - vicar. sdmc@gmail.com/01752 895227.

SERVICE 10:30 Ivybridge Baptist Church. Junior church and crèche during the message. Tea/coffee after the service. Pastor John Williams - email iebco@hotmail.co.uk / 07853 620648.

MASS 11:00 St Austin's Priory. With children's liturgy. Tea/coffee afterwards.

IVYBRIDGE WALKING CLUB 10:00-16:00. Fortnightly walks in and around the South Hams and beyond. FFI: ivybridgewalkingclub.com.

IVYBRIDGE BLOOMERS 14:00-16:00 The Snail Garden, Harford Road. Phone Shirley Weeks on 07934 999404.

SERVICE 18:00 Ivybridge Baptist Church. Communion on the 3rd Sunday of the month. Pastor: Andrew Holland - email: iebco@hotmail.co.uk.



F1 [12A]
15-17 JULY



HOW TO TRAIN YOUR DRAGON [PG] 19-24 JULY



ELIO [PG]
26-31 JULY



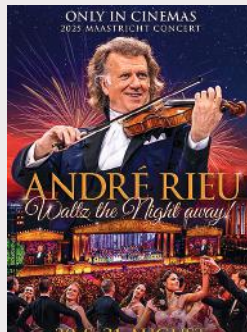
SMURFS [CERT TBC]
9-21 AUGUST



FOUR LETTERS OF LOVE [12A] - COMING SOON



NAKED GUN [12A] - COMING SOON



ANDRÉ RIEU'S WALTZ THE NIGHT AWAY!
- 31 AUGUST 2PM



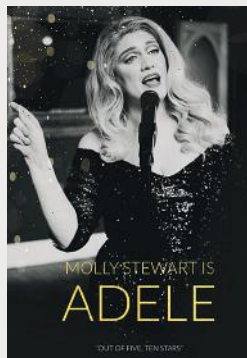
PLEASE CHECK OUR WEBSITE FOR FULL CINEMA LISTINGS



ALBERT LEE - 18 JULY



IVYBRIDGE COMEDY CLUB
- 19 JULY



MOLLY IS ADELE
- 2 AUGUST 1.30pm



WELLBEING FAIR
- 13 SEPT

Bookings for stalls being taken now

The Watermark
ERME COURT - LEONARDS ROAD - IVYBRIDGE

BOX OFFICE

01752 892 220

ivybridgewatermark.co.uk

LIVE EVENTS / CINEMA / COFFEE SHOP / INFO CENTRE / WEDDINGS / CONFERENCES / PRIVATE PARTIES