

 **DynaFlex**[®]



THE
Norris **SYSTEM**

THE CHOICE OF ORTHODONTISTS WORLDWIDE



THE Norris SYSTEM

Created by Dr. Robert "Tito" Norris—orthodontist and mechanical engineer—this system integrates cutting-edge design enhancements that overcome the limitations of today's appliances, delivering unprecedented performance for modern orthodontists.

The Norris 20/26[®] Bracket System sets a new standard in treatment efficiency, representing the most advanced leap in passive self-ligation and arch form technology to date. In addition to the current, well-known metal line, a clear bracket line is available!

The result is a true twin, passive/active self-ligating appliance system with a reduced slot dimension of .020" x .026", combined with a series of extra broad arch form wires.



Dr. Tito Norris

Orthodontist and Creator of The Norris System

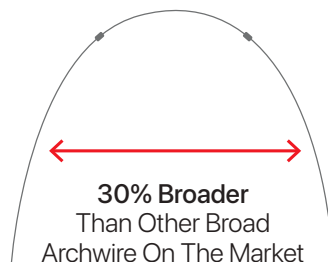
Norris 20/26[®] BRACKET SYSTEM

- Metal & Ceramic Options
- A Precise .020" x .026" Slot
- Universal Bicuspid Hooks
- Deep Tie Wing Undercuts
- Rounded Leading Edge Of Door



Norris EXTRA BROAD ARCHWIRE

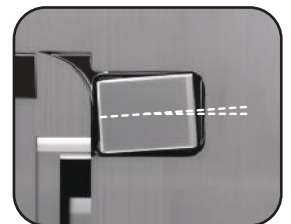
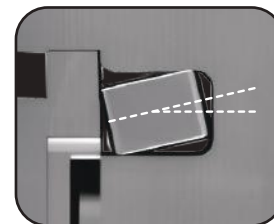
- Maximum Leveling & Alignment
- Treating Posterior Crossbite
- Produces A Beautiful Broad Smile
- Pre-Stopped
- .019" x .025" Rounded Rectangular



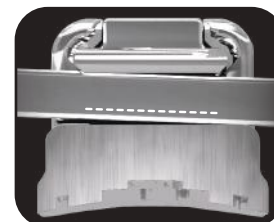
Control *Without* Compromise

Traditional
.022" x .028" Slot

Norris 20/26[®]
.020" x .026" Slot



Door



.019" x .025" Archwire

.019" x .025" Archwire



Norris 20/26[®] METAL

Discover more on pages 4 and 5.

- Nickel-Free Chromium Cobalt Alloy
- Rounded Leading Edge Of Door
- Universal Bicuspid Hooks
- Deep Tie Wing Undercuts
- .020" x .026" Slot



Norris 20/26[®] CLEAR

Discover more on pages 6 and 7.

- Proprietary Blend of Alumina & Zirconia
- Structurally Reinforced Door and Channel
- Universal Bicuspid Hooks
- Deep Tie Wing Undercuts
- .020" x .026" Slot



First Molar Tubes



Second Molar Tubes

Norris 20/26[®] TUBES

Discover more on page 10.

- Nickel-Free Chromium Cobalt Alloy
- First Molar Tubes Feature Self-Ligating Door
- Second Molar Tubes Are Low-Profile & Non-Convertible



“I simply cannot believe the improvement since switching to The Norris System bracket. They go on easier, much less breakage, their shape allows my patients to brush easier, and I’m finishing with less adjustments - meaning less appointments and less treatment time than my previous PSL system! Simply amazing!”

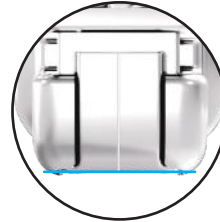
Dr. Rich Miller | Exeter, New Hampshire

Norris 20/26[®] METAL

BRACKET SYSTEM

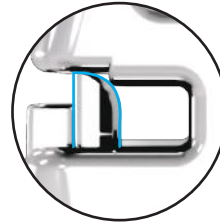
Nickel-Free SL Bracket With Truly Precise .020" x.026" Slot

Reduced slot dimension delivers unparalleled control. Clinically shown to be 26% more efficient* than the leading PSL bracket system. Allows for three common wire sizes.



Straight Occlusal Edge

The occlusal edge of the new gingivally offset premolar bracket base is straight so that it can more easily be used as a paralleling guide to the marginal ridges of a premolar.



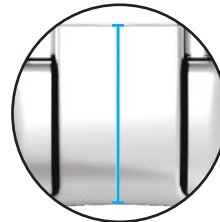
Rounded Leading Edge Of Door

Aids in archwire seating.



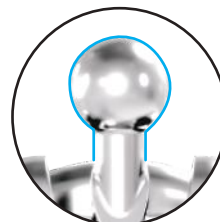
Deep Tie Wing Undercuts

Optimal tie wing depth for elastic chain, ties or steel ligatures.



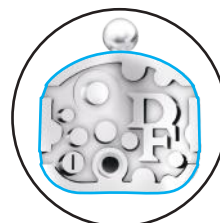
Center Scribe Line

Aligns the long axis for accurate placement.



Universal Bicuspid Hooks

Reduces inventory with multiple interchangeable brackets. One bracket is interchangeable per arch.



Unparalleled Bond Strength

Engineered to conform to each tooth and create unmatched bond strength.

Reduce Patient Visits & Chair Time Without Expensive Lab Fees.

**Based on a single-practice evaluation of 500 finished cases between Norris and a leading .022" PSL system.*

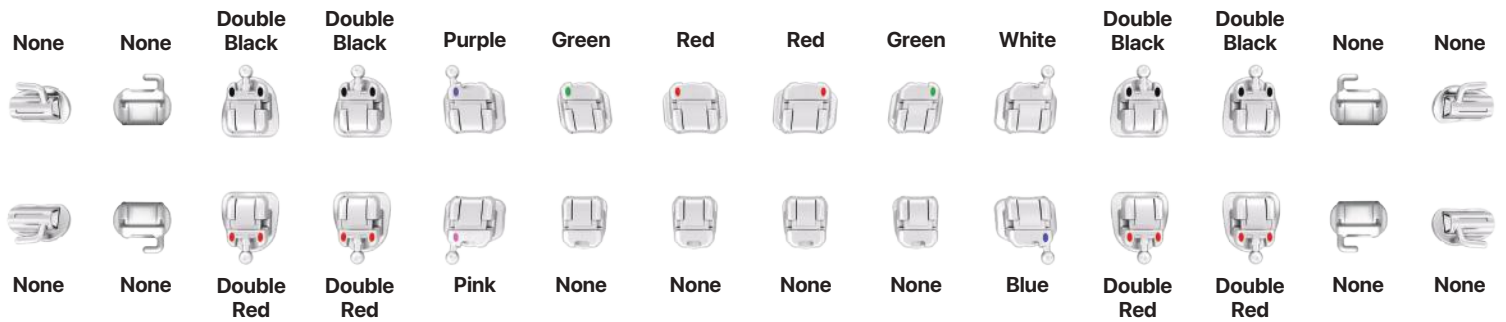
Suggested Bracket Placement Guide

The bracket placement guide was developed by Dr. Norris with the projection of the smile in mind. It optimizes the smile arc via the fluid gradient of increasing tooth display.



UPPER CENTRAL INCISOR	UR7	UR6	UR5	UR4	UR3	UR2	UR1	UL1	UL2	UL3	UL4	UL5	UL6	UL7
12mm	3.5	4.0	5.0	5.5	6.0	6.0	6.5	6.5	6.0	6.0	5.5	5.0	4.0	3.5
11mm	3.0	3.5	4.5	5.0	5.5	5.5	6.0	6.0	5.5	5.5	5.0	4.5	3.5	3.0
10mm	2.5	3.5	4.0	4.5	5.0	5.0	5.5	5.5	5.0	5.0	4.5	4.0	3.5	2.5
9mm	2.0	3.0	3.5	4.0	4.5	4.5	5.0	5.0	4.5	4.5	4.0	3.5	3.0	2.0
LOWER CENTRAL INCISOR	LR7	LR6	LR5	LR4	LR3	LR2	LR1	LL1	LL2	LL3	LL4	LL5	LL6	LL7
11mm	6.0	5.0	5.5	6.0	6.0	5.0	5.0	5.0	5.0	6.0	6.0	5.5	5.0	6.0
10mm	5.5	4.5	5.0	5.5	5.5	5.0	5.0	5.0	5.0	5.5	5.5	5.0	4.5	5.5
9mm	5.0	4.0	4.5	5.0	5.0	4.5	4.5	4.5	4.5	5.0	5.0	4.5	4.0	5.0
8mm	4.5	3.5	4.0	4.5	4.5	4.0	4.0	4.0	4.0	4.5	4.5	4.0	3.5	4.5

Bracket Color Coding



Bracket Prescription Reference Chart

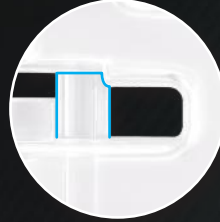
		Univ HKS	Univ HKS	Distal HKS				Distal HKS	Univ HKS	Univ HKS				
UPPER	UR7	UR6	UR5	UR4	UR3	UR2	UR1	UL1	UL2	UL3	UL4	UL5	UL6	UL7
Torque	-20	-15	-5	-5	0	8	12	12	8	0	-5	-5	-15	-20
Tip	0	0	0	0	5	9	5	5	9	5	0	0	0	0
Rotation	0	12	0	0	0	0	0	0	0	0	0	0	12	0
In/out	0.90	0.90	0.69	0.69	0.69	0.89	0.89	0.89	0.89	0.69	0.69	0.69	0.90	0.90
LOWER	LR7	LR6	LR5	LR4	LR3	LR2	LR1	LL1	LL2	LL3	LL4	LL5	LL6	LL7
Torque	-20	-20	-12	-12	0	-5	-5	-5	-5	0	-12	-12	-20	-20
Tip	0	0	0	0	5	0	0	0	0	5	0	0	0	0
Rotation	0	0	0	0	0	0	0	0	0	0	0	0	0	0
In/out	0.90	0.90	0.69	0.69	0.69	1.0	1.0	1.0	1.0	0.69	0.69	0.69	0.90	0.90

Norris 20/26[®] CLEAR

BRACKET SYSTEM

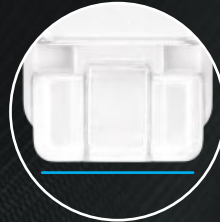
The Norris 20/26[®] Clear Bracket System offers the same advanced design as the Norris Metal Bracket System, with the added benefit of a nearly invisible, tooth-colored appearance that blends seamlessly with the smile — enhancing aesthetics and boosting patient confidence.

Backed by over four years of research and development, the Norris 20/26[®] Clear Bracket System has undergone multiple clinical trials to validate performance, precision, and reliability in real-world applications.



Enhanced Door Performance

Through extensive testing, we refined the door channels and door mechanism to ensure the door is both esthetic and reliably durable.



Straight Occlusal Edge

Serves as a reliable guide for paralleling the marginal edges of premolars during bracket positioning.



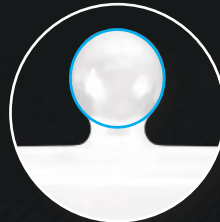
Deep Tie Wing Undercuts

Optimal tie wing depth for elastic chain, ties or steel ligatures.



Center Scribe Line

Aligns the long axis for accurate placement.



Universal Bicuspid Hooks

Reduces inventory with multiple interchangeable brackets. One bracket is interchangeable per arch.



Engineered For Optimal Bonding

Engineered to conform to each tooth and create unmatched bond strength.

Reduce Patient Visits & Chair Time Without Expensive Lab Fees.

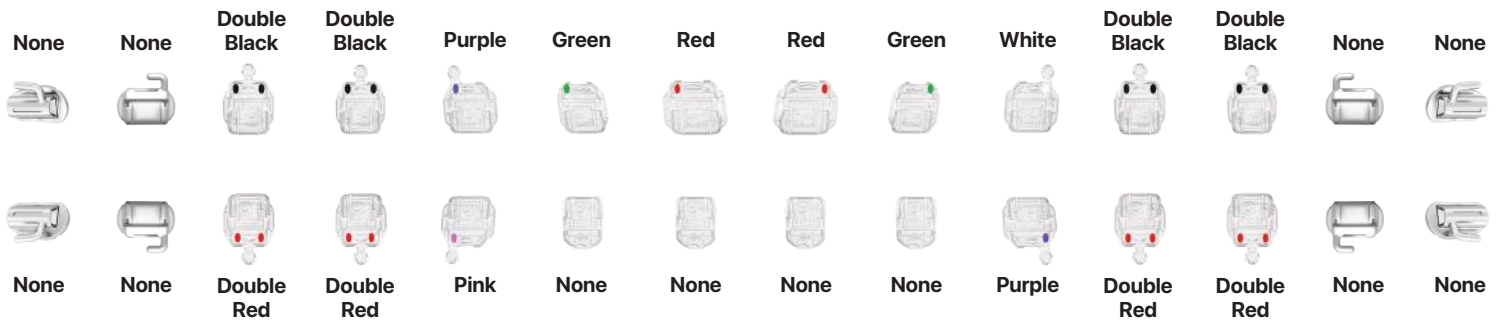
Suggested Bracket Placement Guide

The bracket placement guide was developed by Dr. Norris with the projection of the smile in mind. It optimizes the smile arc via the fluid gradient of increasing tooth display.



UPPER CENTRAL INCISOR	UR7	UR6	UR5	UR4	UR3	UR2	UR1	UL1	UL2	UL3	UL4	UL5	UL6	UL7
12mm	3.5	4.0	5.0	5.5	6.0	6.0	6.5	6.5	6.0	6.0	5.5	5.0	4.0	3.5
11mm	3.0	3.5	4.5	5.0	5.5	5.5	6.0	6.0	5.5	5.5	5.0	4.5	3.5	3.0
10mm	2.5	3.5	4.0	4.5	5.0	5.0	5.5	5.5	5.0	5.0	4.5	4.0	3.5	2.5
9mm	2.0	3.0	3.5	4.0	4.5	4.5	5.0	5.0	4.5	4.5	4.0	3.5	3.0	2.0
LOWER CENTRAL INCISOR	LR7	LR6	LR5	LR4	LR3	LR2	LR1	LL1	LL2	LL3	LL4	LL5	LL6	LL7
11mm	6.0	5.0	5.5	6.0	6.0	5.0	5.0	5.0	5.0	6.0	6.0	5.5	5.0	6.0
10mm	5.5	4.5	5.0	5.5	5.5	5.0	5.0	5.0	5.0	5.5	5.5	5.0	4.5	5.5
9mm	5.0	4.0	4.5	5.0	5.0	4.5	4.5	4.5	4.5	5.0	5.0	4.5	4.0	5.0
8mm	4.5	3.5	4.0	4.5	4.5	4.0	4.0	4.0	4.0	4.5	4.5	4.0	3.5	4.5

Bracket Color Coding



Bracket Prescription Reference Chart

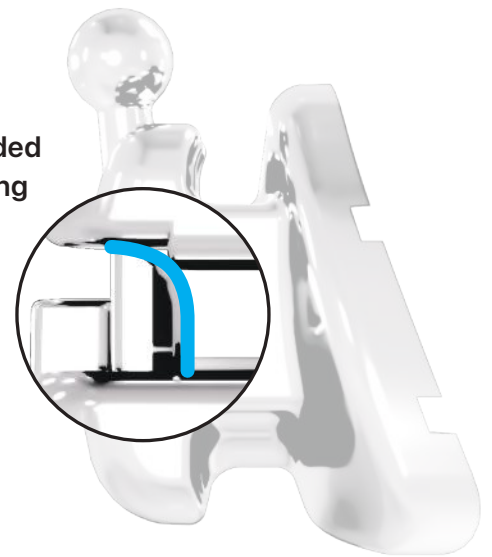
		Univ HKS	Univ HKS	Distal HKS				Distal HKS	Univ HKS	Univ HKS				
UPPER	UR7	UR6	UR5	UR4	UR3	UR2	UR1	UL1	UL2	UL3	UL4	UL5	UL6	UL7
Torque	-20	-15	-5	-5	0	8	12	12	8	0	-5	-5	-15	-20
Tip	0	0	0	0	5	9	5	5	9	5	0	0	0	0
Rotation	0	12	0	0	0	0	0	0	0	0	0	0	12	0
In/out	0.90	0.90	0.69	0.69	0.69	0.89	0.89	0.89	0.89	0.69	0.69	0.69	0.90	0.90
LOWER	LR7	LR6	LR5	LR4	LR3	LR2	LR1	LL1	LL2	LL3	LL4	LL5	LL6	LL7
Torque	-20	-20	-12	-12	0	-5	-5	-5	-5	0	-12	-12	-20	-20
Tip	0	0	0	0	5	0	0	0	0	5	0	0	0	0
Rotation	0	0	0	0	0	0	0	0	0	0	0	0	0	0
In/out	0.90	0.90	0.69	0.69	0.69	1.0	1.0	1.0	1.0	0.69	0.69	0.69	0.90	0.90

Where Innovation Meets Precision

The Norris 20/26[®] Metal & Clear Brackets Feature a *Flawless, Self-Gliding Door Mechanism*

Unfailing door with reciprocal mechanism and audible opening and closing “click”, proven to last throughout treatment. Opening the bracket door has never been easier.

Rounded Leading Edge



STEP 1:

Insert the Norris Exclusive “Triple Tool” horizontally into the door slot.



STEP 2:

Rotate the “Triple Tool” 90 degrees in either direction.



STEP 3:

The bracket door will “glide open” and “glide closed” once the door travels 50% in either direction.



Scan To Watch A Clinical Demonstration Of The Norris Bracket Opening And Closing On A Patient.



“

The unique spring clip inside the door of the bracket allows the door to actually spring open and spring closed once the door passes 50% of its travel in either direction. This spring clip assisted opening and closing is the first and only one of its kind, and is a HUGE step forward in PSL technology.

Dr. Robert “Tito” Norris

”

The Same Process Applies For *The Norris Clear Brackets* By Utilizing The Norris Clear Opening Tool.

Norris Metal Brackets: Repositioning & Final Debonding

The Norris 20/26® Bracket features notably higher bond strength compared to conventional brackets. For routine removal, the bracket can be debonded using a debonding plier by gripping in an occlusal-to-gingival direction; however, this method may distort the bracket wings and archwire slot. When debonding with the intention of repositioning the same bracket, grasp the bracket diagonally at approximately a 45° angle to help preserve the integrity of the wings and archwire slot. In either case, have the patient firmly bite down on a cotton roll to stabilize the tooth during the debonding process.

Debonding For Repositioning

Position Plier Diagonally



Final Debond

Position Plier Occlusal-Gingival



Norris Clear Brackets: Repositioning & Final Debonding

Similar to the Norris Metal brackets, the Norris Clear Brackets have a notably high bond strength. Please use the **Clear Debonding Plier (#216-5025)** for debonding. Please remember to close all of the bracket doors before debonding. Ensure all flash is properly removed. Repositions can be performed just like the metal brackets. We recommend that any repositioning is done while the patient is still in NiTi wire for best results.



Works Well With Any Ceramic Or Metal Bracket

Learn more on page 11

Repositioning & Final Debonding

Position Plier Occlusal-Gingival



Norris 20/26[®]

BUCCAL TUBES

The Norris Bondable Tubes Are **Designed To Work Seamlessly**
With The Norris 20/26[®] Bracket System.



First Molars:
**Nickel-Free Self-Ligating
Bondable Tubes**



Second Molars:
**Low-Profile Non-Convertible
Bondable Tubes - 3.0mm**



Self-Ligating Door
"Assisted" opening and closing
similar to the Norris brackets.
Only on the Norris 6's.



**Engineered For
Optimal Bonding**
Engineered to conform to
each tooth and create
unmatched bond strength.



**Standard And
Expanded Bases**
Available in 2 base options
to fit your needs.



**Nickel-Free And
Biocompatible**
For safe use in patients with
nickel sensitivity.



**Scan To
Purchase**



**Scan To
Purchase**

The Norris System Tools



HIP TOOL

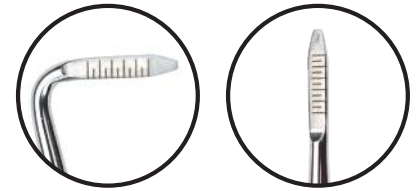
Aids in effortlessly seating the wire in the archwire slot and makes placing torque in rectangular wire easy. **Item #216-5000**



METAL TRIPLE TOOL

Three tools in one; door opener, positioner, ruler.

Item #216-5005



DOUBLE TAKE MIRROR

Double-sided intraoral mirror allows the doctor to simultaneously retract and visualize groups of teeth. **Item #216-5010**



METAL BRACKET OPENING TOOL

A single-ended opening instrument that works seamlessly to open Norris Metal SL doors. **Item #216-5015**



CLEAR BRACKET OPENING TOOL

A single-ended opening instrument that works seamlessly to open Norris Clear SL doors. **Item #220-5015**



BRACKET HEIGHT GAUGE

Crafted from high-quality steel, the Norris gauge features increased height dimensions, ranging from 5.5 mm to 7.0 mm, to accommodate higher bracket placements. The Norris gauge is compatible with both .018 and .020 slots. **Item #216-5020**



CLEAR DEBONDING PLIER

The DynaFlex Clear Debonding Plier features two uniquely designed claw tips and a carefully crafted wedge. The claw tips securely grip bracket bases occlusal-gingivally, while the wedge applies optimal pressure for a comfortable, efficient debonding process. Perfect for ceramic brackets, this versatile tool also works exceptionally well with metal brackets. **Item #216-5025**

*Preferred For Debonding
Norris Clear Brackets*



**Scan To View Helpful Animations
Demonstrating Norris System Tools**

Norris **EXTRA BROAD** ARCHWIRE



Like the Norris 20/26® Brackets, the Norris Extra Broad Wires break convention by redefining expanded arches and aesthetic expression. Drawing on years of observation and trial and error, Dr. Robert “Tito” Norris transformed existing broad arch forms into today’s extra broad design. Thirty percent broader than the widest arch on the market, this non-coordinated form treats both the maxilla and mandible with one wire—delivering maximum space, alignment, and leveling, while engaging soft tissue and bracket-wire dynamics earlier for greater efficiency and outcomes.

Throughout the later working and finishing stages of treatment, a “Rounded Rectangular” (.019”x.025”) archwire is introduced (yet another DynaFlex® exclusive) that makes insertion, clip closure, and seating smoother than ever. Norris Extra Broad Wires are the perfect complement in how they fully express the torque and tip of the bracket over existing passive systems, yet without the binding of other higher frictional systems. Most importantly, however, is how they both fit to produce broader, more expressive smiles than anything else available today.

The Norris Extra Broad Archwires are 30% broader than the broadest arch on the market. This extra broad arch achieves a number of key efficiencies and effects:

Maximum Leveling & Alignment:

Teeth are afforded a greater range of motion.

Treating Posterior Cross Bite:

The broad shaped archwire can often be effective at correcting crossbites.

Produces A Beautiful Broad Smile:

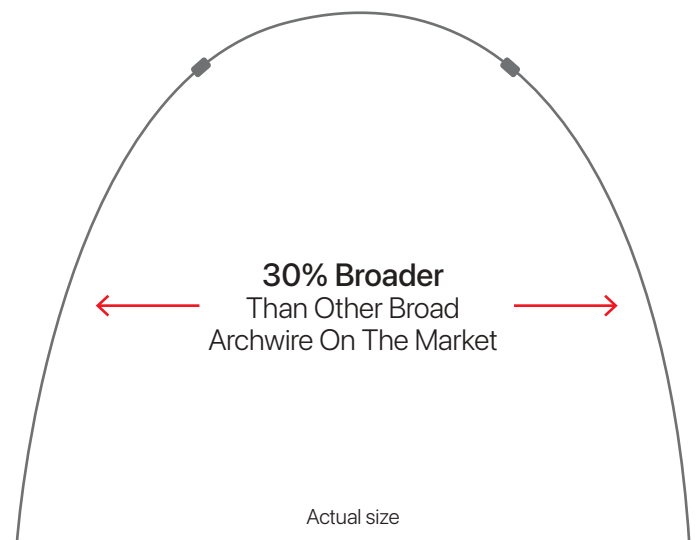
Reduces the dark posterior buccal corridors and expresses each tooth to its full outer-most potential.

Pre-Stopped:

This helps control archwire shifting and can be tightened at any position along the arch in accordance with the doctor’s preference.

.019” x .025” Rounded Rectangular:

The “Rounded-Rectangular” NiTi and Beta archwire shape ensures smoother insertion, clip closure, and seating, while retaining torque control by only rounding the sharp corners.



**Scan To
Purchase**

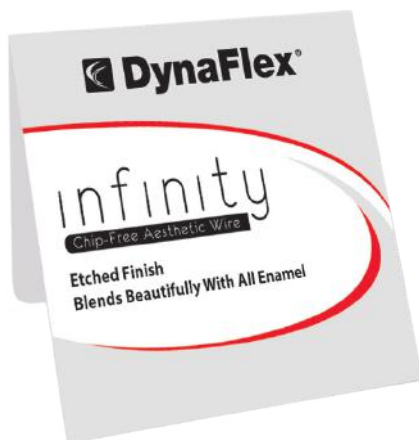
infinity

Chip-Free Aesthetic Wire

Finally, an aesthetic archwire that looks beautiful from **start to finish.**

Discover a revolutionary solution in the orthodontic market with our Infinity Aesthetic wire! Unlike traditional coated aesthetic wires, our Infinity Wire is not coated; instead, it undergoes a unique etching process that eliminates the common drawbacks found with traditional coatings. This etching process ensures the natural color finish is incredibly durable, will not wear off, and the original wire size is retained and not increased or altered by a coating thickness. Moreover, our etching technique will not increase friction, ensuring optimal performance. The result is a wire that beautifully blends with all enamel, providing a discreet and aesthetic orthodontic experience.

Available in packs of 10 wires.

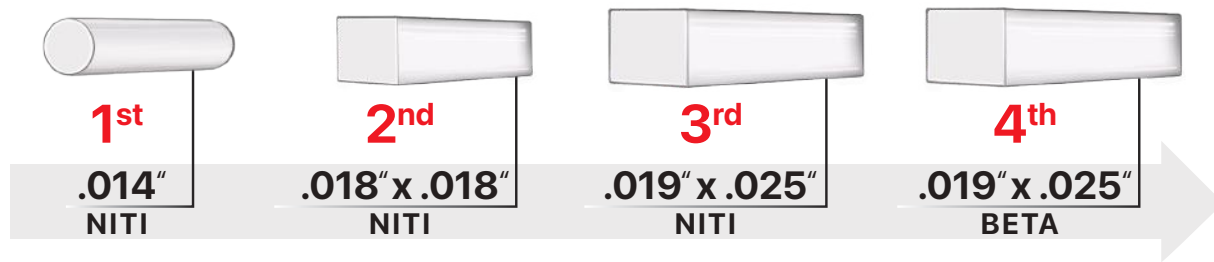


Scan To Purchase

Infinity Wires Paired With Norris Clear Brackets Are Virtually Invisible.

Archwire Sequencing Guide

Please use the following archwire sequencing guide for the Norris Metal & Clear Brackets utilizing the Norris Extra Broad archwire and the Infinity Aesthetic archwire.



PHASE	INITIAL ALIGNMENT	WORKING ALIGNMENT	WORKING FINISHING I	WORKING FINISHING II
WIRE	.014" NiTi	.018" x .018" NiTi	.019" x .025" Rounded NiTi	.019" x .025" Rounded Beta
DURATION	10 Weeks	10 Weeks	10 Weeks	8 Weeks Or Until Finished

Important Instructions For Norris Clear Brackets

Allow the .014" NiTi wire to fully express before progressing.

The maximum recommended stainless steel wire is .017" x .025".

Ensure the .018" x .018" NiTi wire has resolved all rotations before transitioning to .019" x .025" NiTi.

Beta wire should only be used after one month of .019" x .025" NiTi wear.

Elastic Sequencing Guide

WIRE	ELASTICS	INTERVAL
.014" NiTi Extra Broad	-	8 - 10 Weeks
.018" x .018" NiTi Extra Broad	2.5 oz.	8 - 10 Weeks
.019" x .025" NiTi Extra Broad	4 oz.	8 - 10 Weeks
.019" x .025" NiTi Extra Broad	4 oz.	8 - 10 Weeks
.019" x .025" Beta-Ti Extra Broad	6 oz.	4 - 6 Weeks
.019" x .025" Beta-Ti Extra Broad	-	4 - 6 Weeks
.019" x .025" Beta-Ti Extra Broad	-	4 - 6 Weeks
.019" x .025" Beta-Ti Extra Broad	-	4 - 6 Weeks
.019" x .025" Beta-Ti Extra Broad	-	4 - 6 Weeks

PATIENT 1

- **Initial:** Class II Division 1 deep bite with palatal impingement, dento-alveolar extrusion, narrow arches, and splayed incisors.
- **Appointment 1:** Brackets were indirectly bonded at initial appointment. Norris Extra Broad, .014" NiTi.
- **Appointment 3:** Norris Extra Broad, .019" x .025" NiTi wires placed at 4 months treatment/3rd appointment. Class II elastics began bilaterally at this appointment.
- **Appointment 5: Total Treatment Time = 6.5 months**



PATIENT 2

- **Initial:** Class III with an anterolateral open bite, reverse smile arc, maxillary crowding and mandibular spacing.
- **Appointment 1:** Brackets were indirectly bonded at initial appointment. Norris Extra Broad, .014" NiTi.
- **Appointment 3:** Norris Extra Broad, .019" x .025" NiTi. Strong tongue pushed the mandibular anterior teeth into an anterior cross-bite. Mandibular lingual bite turbos & elastic chains were placed to assist in re-capturing positive overjet.
- **Appointment 8: Total Treatment Time = 12 months**



PATIENT 3

- **Initial:** Class II Division 1 deep bite case with ectopically positioned mandibular cuspids, narrow arches and crowding.
- **Appointment 1:** Brackets were indirectly bonded at initial appointment. Norris Extra Broad, .014" NiTi.
- **Appointment 3:** Norris Extra Broad, .019" x .025" NiTi placed at 4 months treatment/3rd appointment. Class II elastics began bilaterally at 2nd appointment.
- **Appointment 9: Total Treatment Time = 8.5 months**



Meet DR. TITO NORRIS

ORTHODONTIST & CREATOR OF THE NORRIS SYSTEM

Dr. Robert Norris is devoted to creating smiles for a lifetime. His unique background in mechanical engineering provides him with a distinct advantage in mastering the forces, vectors, and movements inherent in performing orthodontic treatment. Dr. Norris is a 1992 graduate of the University of Texas Health Science Center at San Antonio Dental School. He then moved to Washington, D.C. where he completed a General Practice Residency at the V.A. Hospital followed by orthodontic specialty training at Howard University. After serving as an Air Force orthodontist in Misawa, Japan, Dr. Norris returned to San Antonio, TX in 1998 and opened a thriving private orthodontic practice. He holds several patents and trademarks, is Board Certified by the American Board of Orthodontics, and is a member of 10 dental organizations and study clubs. He lectures nationally and internationally on topics including aesthetics, efficiency, sustainability, customer service, accelerated treatment, and aligner treatment. He has created and manages several other companies pertaining to real estate investments, marketing, retail sales, and a non-profit providing complimentary orthodontic care to children in need.

Professional Affiliations

- American Dental Association
- American Association of Orthodontists
- Board Certified by the American Board of Orthodontics
- Texas Dental Association



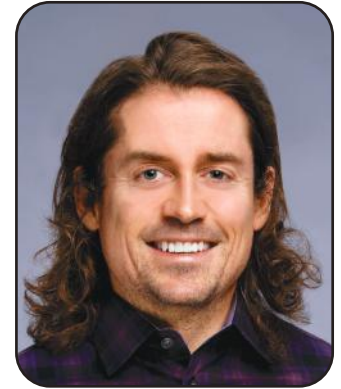
Elevate Esthetics

Esthetics and Finishing For Clinical Excellence

Featuring Dr. Tito Norris & Dr. Chad Foster



Dr. Tito Norris



Dr. Chad Foster



Key Course Topics

Multi-Disciplinary Approaches To Achieving The Most Predictable And Esthetic Results

Bracket Placement Mastery For Earlier Engagement, Esthetics, And Occlusion

A Simple Process To Diagnose And Treat The Most Challenging Interdisciplinary Cases

Diagnosing and Treatment Planning For Borderline Extraction Cases



“

This course made me a better diagnostician and a better technician.

It's been a long time since I've been tested, so I must admit I was nervous/intimidated that on the last day we would be breaking into small groups to develop treatment plans for five difficult cases; It turned out to be the very best part...It's been 2 months since my seminar and I've had many parents thank me for describing esthetic problems that their previous orthodontic opinions never mentioned. Thanks Docs and thanks DynaFlex!

P.S. I went "all-in" on the Norris System and I'm loving it!

Dr. Michael Naborowski | Addison, Illinois

”



**SCAN TO VIEW
UPCOMING COURSES**

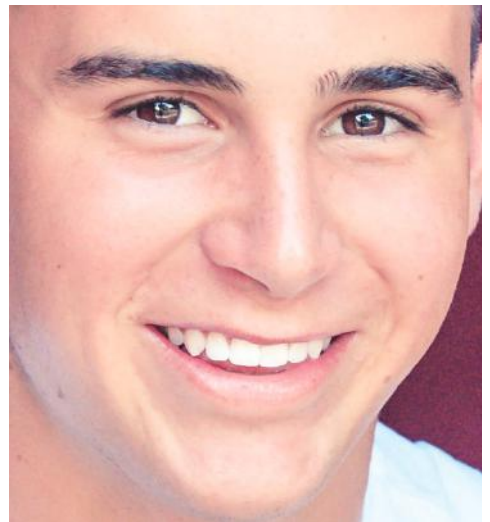
Please Note: This course is specifically designed for board-certified orthodontists, current orthodontic residents, and orthodontic staff members seeking advanced insights and techniques. While we appreciate the interest of all dental professionals, the content is tailored for those with a specialized background in orthodontics rather than general practice.

Connect With A DynaFlex[®] Specialist To Learn More

www.dynaflex.com/the-norris-system



Scan The QR Code To Get Started



www.dynaflex.com | 866-346-5665

122525 2026 © DynaFlex[®], Lake St. Louis, MO 63367. Printed in U.S.A. All rights reserved.

It is a violation of copyright law to reproduce all or part of this material, including photography, without the permission of DynaFlex[®].