

# Standard Negative Busbar Enclosures for the Rail Industry

2023

Edition V4 - April 2023

Design & Manufacturers of:

| AC Switchgear | DC Switchgear | Bespoke Control Panels | AC & DC PDC's & PDU's |  
| Copper Junction Boxes | Marshalling Panels | Transition Boxes | Earth Bars |

# Contents

## Page

2	Introduction
3-4	Standard Negative Bus Bar Enclosure Catalogue
5-6	Technical Drawings

All ratings based on an operating temperature of 40°C ambient temperature, with 50°C temperature rise

### Head Office:

34 Forest Road

Hinckley

Leicestershire

LE10 1HB

Tel: 01455 234996

Email: [info@amjelectricaldesigns.co.uk](mailto:info@amjelectricaldesigns.co.uk)

Web: [www.amjelectricaldesigns.co.uk](http://www.amjelectricaldesigns.co.uk)

### Workshop:

Units 53 & 73 Sparkenhoe Business Centre

Southfield Road

Hinckley

Leicestershire

LE10 1UB

Tel: 01455 616686

Email: [info@amjelectricaldesigns.co.uk](mailto:info@amjelectricaldesigns.co.uk)

# Standard Negative Busbar Enclosure Range

Negative Busbar Enclosures built for the Rail Industry, fully rated at 750V DC. Supplied in an IP66, Fully Electrically Insulated GRP Polycarbonate Enclosure Finished in RAL 7035 Light Grey with impact resistance up to IK10 in 35c and IK08 in -25c temperatures.

We have 13 main ranges from stock, however with our large and vast stock of copper bar and great working relations with our suppliers for enclosures, we can offer quick turn arounds on bespoke versions to suit your needs and at competitive prices.





### Part number: AMJ/NBB/1

- 400mmW x 300mmH x 200mmD
- IP66 Fully Electrically Insulated GRP Polycarbonate Enclosure, Finished in RAL7035 Light Grey
- 60 x 6mm HDHC Copper Busbar Tin Plated and Mounted on M8 x 50mm High LSHF Stand Off Insulators.
- Rated 1000A 750V DC.
- To accept upto 2 x 240mm Aluminium Cables onto M16x40mm studs
- 2 x M10x40mm studs for Negative metering connections

**£463.86** .....ex VAT

Inc. UK Main Land Delivery  
For Electrical Dimension Drawing  
please see page 10 figure 1.1



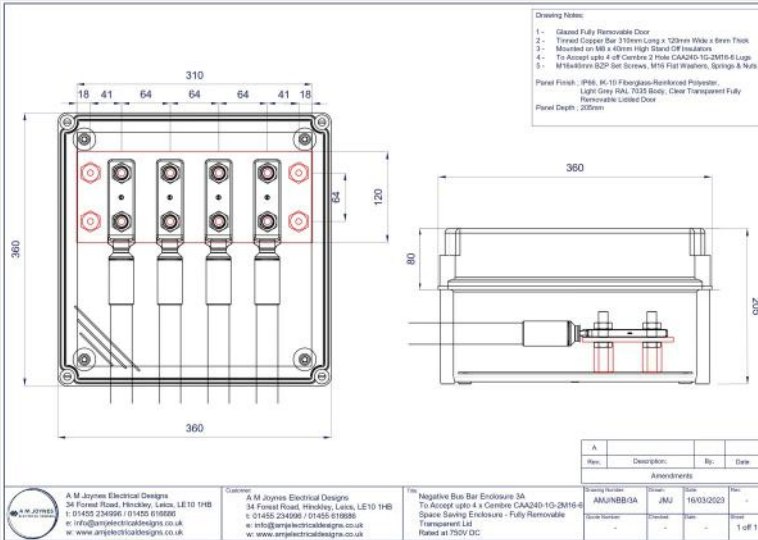
### Part number: AMJ/NBB/2

- 500mmW x 400mmH x 200mmD
- IP66 Fully Electrically Insulated GRP Polycarbonate Enclosure, Finished in RAL7035 Light Grey
- 120 x 6mm HDHC Copper Busbar Tin Plated and Mounted on M8 x 50mm High LSHF Stand Off Insulators.
- Rated 1800A 750V DC
- To accept upto 4 x Aluminium Cables onto M16x40mm studs 64mm Centres for Cembre Lugs CAA240-IG-2M16-64

**£713.60** .....ex VAT

Inc. UK Main Land Delivery  
For Electrical Dimension Drawing  
please see page 10 figure 1.2

## Part number: AMJ/NBB/3A



- 360mmW x 360mmH x 205mmD with Transparent Fully Removable Door IP66 Fully Insulated Polycarbonate Enclosure - RAL7035 Light Grey
- Space Saving Negative Box For Tight & Limited Spaces on Site
- 120 x 6mm HDHC Copper Busbar Tin Plated Mounted on M8 x 30mm High LSHF Stand Off Insulators. RATED 1800A 750VDC.
- To accept upto 4 x Aluminium Cables onto M16x40mm studs 64mm Centres for Cembre Lugs CAA240-IG-2M16-64

**£679.98** .....ex VAT

Inc. UK Main Land Delivery  
For Electrical Dimension Drawing  
please see page 11 figure 2.1

## Part number: AMJ/NBB/4



**£946.25** .....ex VAT

Inc. UK Main Land Delivery  
For Electrical Dimension Drawing  
please see page 11 figure 2.2

- 800mmW x 600mmH x 300mmD
- IP66 Fully Electrically Insulated GRP Polycarbonate Enclosure, Finished in RAL7035 Light Grey
- 120 x 6mm HDHC Copper Busbar Tin Plated and Mounted on M8 x 50mm High LSHF Stand Off Insulators
- RATED 1800A 750V DC
- To accept upto 8 x Aluminium Cables onto M16x40mm studs 64mm Centres for Cembre Lugs CAA240-IG-2M16-64

### Part number: AMJ/NBB/5



- 500mmW x 400mmH x 200mmD
- IP66 Fully Electrically Insulated GRP Polycarbonate Enclosure, Finished in RAL7035 Light Grey
- 120 x 6mm HDHC Copper Busbar Tin Plated and Mounted on M8 x 50mm High LSHF Stand Off Insulators.
- Rated 1800A 750V DC
- To accept upto 5 x Aluminium Cables onto M16x40mm studs 64mm Centres for Cembre Lugs CAA240-IG-2M16-64

**£724.21** .....ex VAT

Inc. UK Main Land Delivery  
For Electrical Dimension Drawing  
please see page 12 figure 3.1

### Part number: AMJ/NBB/6



- 500mmW x 400mmH x 200mmD
- IP66 Fully Electrically Insulated GRP Polycarbonate Enclosure, Finished in RAL7035 Light Grey
- 120 x 6mm HDHC Copper Busbar Tin Plated and Mounted on M8 x 50mm High LSHF Stand Off Insulators.
- Rated 1800A 750V DC
- To accept upto 6 x Aluminium Cables onto M16x40mm studs 64mm Centres for Cembre Lugs CAA240-IG-2M16-64

**£752.07** .....ex VAT

Inc. UK Main Land Delivery  
For Electrical Dimension Drawing  
please see page 12 figure 3.2

## Part number: AMJ/NBB/7

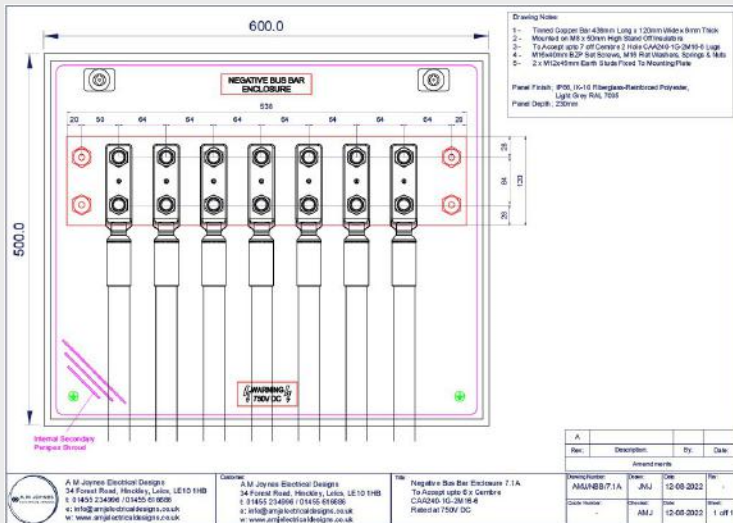


- 600mmW x 500mmH x 230mmD
- IP66 Fully Electrically Insulated GRP Polycarbonate Enclosure, Finished in RAL7035 Light Grey
- 120 x 6mm HDHC Copper Busbar Tin Plated Mounted on M8 x 30mm High LSHF Stand Off Insulators. RATED 1800A 750VDC.
- RATED 1800A 750V DC
- To accept upto 6 x Aluminium Cables onto M16x40mm studs 64mm Centres for Cembre Lugs CAA240-IG-2M16-64

**£814.20** .....ex VAT

Inc. UK Main Land Delivery  
For Electrical Dimension Drawing  
please see page 13 figure 4.1

## Part number: AMJ/NBB/7.1A

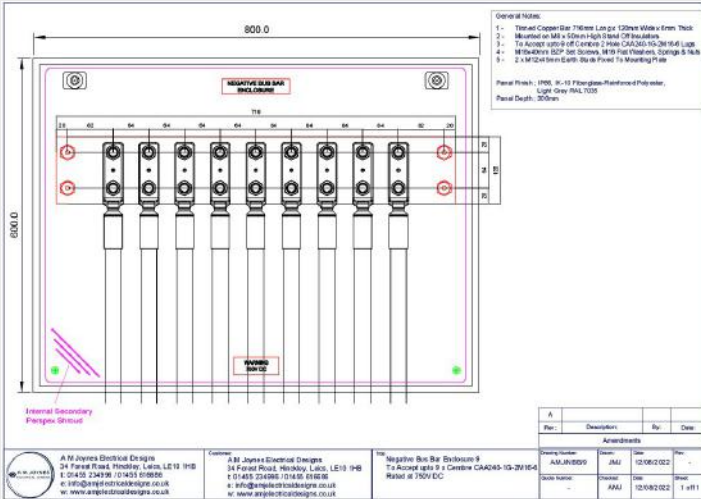


**£832.20** .....ex VAT

Inc. UK Main Land Delivery  
For Electrical Dimension Drawing  
please see page 13 figure 4.2

- 600mmW x 500mmH x 230mmD
- IP66 Fully Electrically Insulated GRP Polycarbonate Enclosure, Finished in RAL7035 Light Grey
- 120 x 6mm HDHC Copper Busbar Tin Plated and Mounted on M8 x 50mm High LSHF Stand Off Insulators
- RATED 1800A 750V DC
- To accept upto 7 x Aluminium Cables onto M16x40mm studs 64mm Centres for Cembre Lugs CAA240-IG-2M16-64

## Part number: AMJ/NBB/9

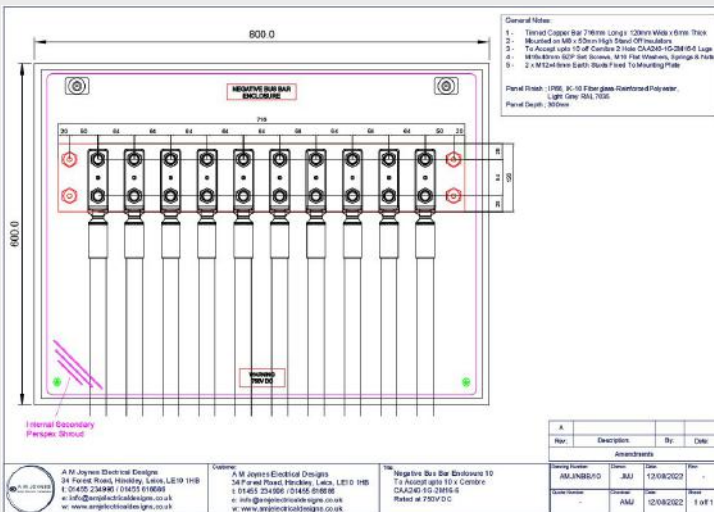


- 800mmW x 600mmH x 300mmD
- IP66 Fully Electrically Insulated GRP Polycarbonate Enclosure, Finished in RAL7035 Light Grey
- 120 x 6mm HDHC Copper Busbar Tin Plated and Mounted on M8 x 50mm High LSHF Stand Off Insulators.
- Rated 1800A 750V DC
- To accept upto 9 x Aluminium Cables onto M16x40mm studs 64mm Centres for Cembre Lugs CAA240-IG-2M16-64

**£1032.92** .....ex VAT

Inc. UK Main Land Delivery  
For Electrical Dimension Drawing  
please see page 14 figure 5.1

## Part number: AMJ/NBB/10



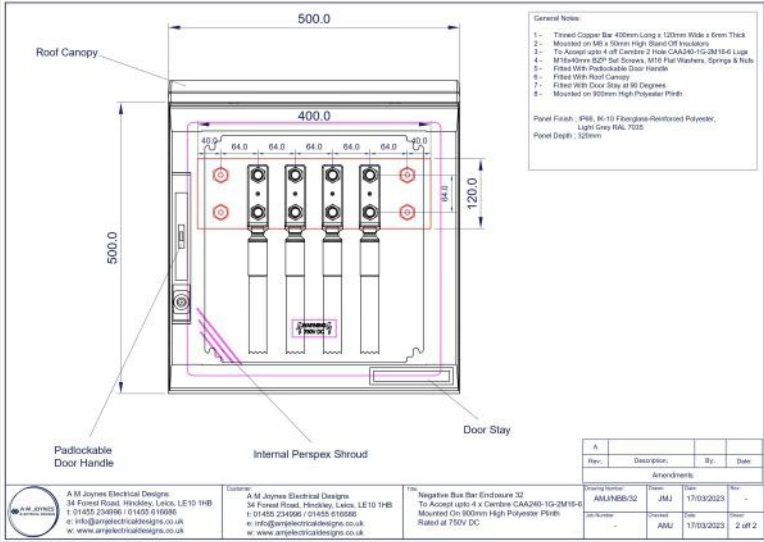
- 800mmW x 600mmH x 300mmD
- IP66 Fully Electrically Insulated GRP Polycarbonate Enclosure, Finished in RAL7035 Light Grey
- 120 x 6mm HDHC Copper Busbar Tin Plated and Mounted on M8 x 50mm High LSHF Stand Off Insulators.
- Rated 1800A 750V DC
- To accept upto 10 x Aluminium Cables onto M16x40mm studs 64mm Centres for Cembre Lugs CAA240-IG-2M16-64

**£1070.32** .....ex VAT

Inc. UK Main Land Delivery  
For Electrical Dimension Drawing  
please see page 14 figure 5.2



## Part number: AMJ/NBB/32

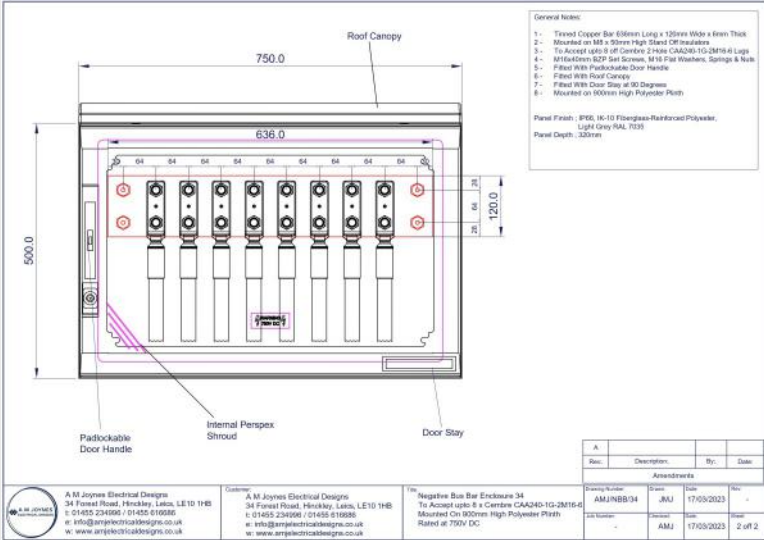


- 500mmW x 500mmH x 320mmD IP66 Fully Insulated GRP Poly Carbonate Enclosure, Finished in RAL7035 Light Grey
- Mounted on RAL 7035 GRP Plinth – Overall Height 950mm
- 120 x 6mm HDHC Copper Busbar Tin Plated Mounted on M8 x 50mm High LSHF Stand Off Insulators.
- RATED 1800A 750V DC
- To accept upto 8 x Aluminium Cables onto M16x40mm studs 64mm Centres for Cembre Lugs CAA240-IG-2M16-64

**£1503.85** .....ex VAT

Inc. UK Main Land Delivery  
For Electrical Dimension Drawing  
please see page 15 figure 6.1

## Part number: AMJ/NBB/34

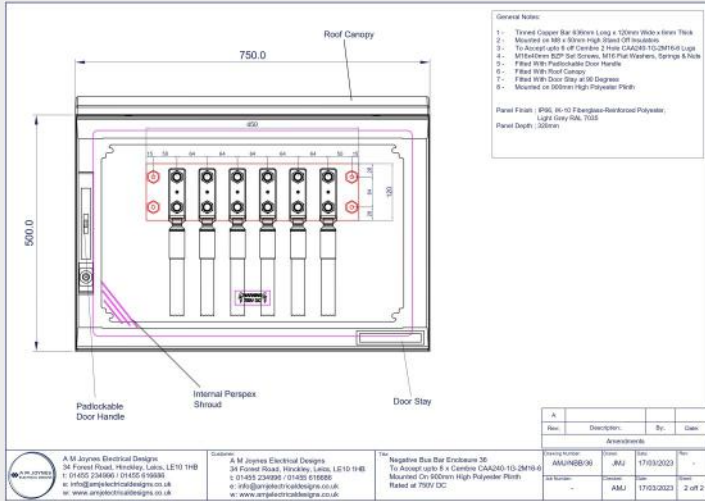


- 750mmW x 500mmH x 320mmD IP66 Fully Insulated GRP Poly Carbonate Enclosure, Finished in RAL7035 Light Grey
- Mounted on RAL 7035 GRP Plinth – Overall Height 950mm
- 120 x 6mm HDHC Copper Busbar Tin Plated Mounted on M8 x 50mm High LSHF Stand Off Insulators.
- RATED 1800A 750V DC
- To accept upto 8 x Aluminium Cables onto M16x40mm studs 64mm Centres for Cembre Lugs CAA240-IG-2M16-64

**£1869.39** .....ex VAT

Inc. UK Main Land Delivery  
For Electrical Dimension Drawing  
please see page 15 figure 6.2

## Part number: AMJ/NBB/36

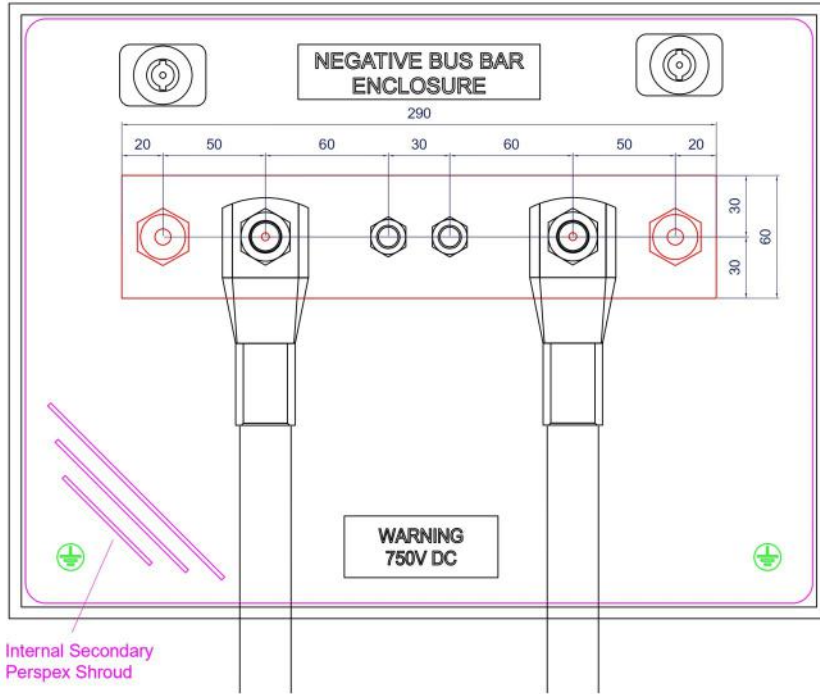


- 750mmW x 500mmH x 320mmD IP66 Fully Insulated GRP Poly Carbonate Enclosure, Finished in RAL7035 Light Grey
- Mounted on RAL 7035 GRP Plinth – Overall Height 950mm
- 120 x 6mm HDHC Copper Busbar Tin Plated Mounted on M8 x 50mm High LSHF Stand Off Insulators.
- RATED 1800A 750V DC
- To accept upto 6 x Aluminium Cables onto M16x40mm studs 64mm Centres for Cembre Lugs CAA240-IG-2M16-64

**£1754.42** .....ex VAT

Inc. UK Main Land Delivery  
 For Electrical Dimension Drawing  
 please see page 14 figure 7.1

Figure 1.1 - AMJ/NBB/1



- Drawing Notes:
- 1 - Tinned Copper Bar 290mm Long x 60mm Wide x 6mm Thick
  - 2 - Mounted on M8 x 50mm High Stand Off Insulators
  - 3 - To Accept 2 off upto 400mm Cables
  - 4 - M16x40 BZP Steel Set Screws, M16 Washers/Nuts/Springs
  - 5 - Provision for Additional Connections via M10x40mm Studs
  - 6 - 2 x M12x45 Earth Studs Fixed To Mounting Plate
- Panel Finish : IP66, IK-10 Fibreglass-Reinforced Polyester,  
Light Grey RAL 7035  
Panel Depth ; 200mm



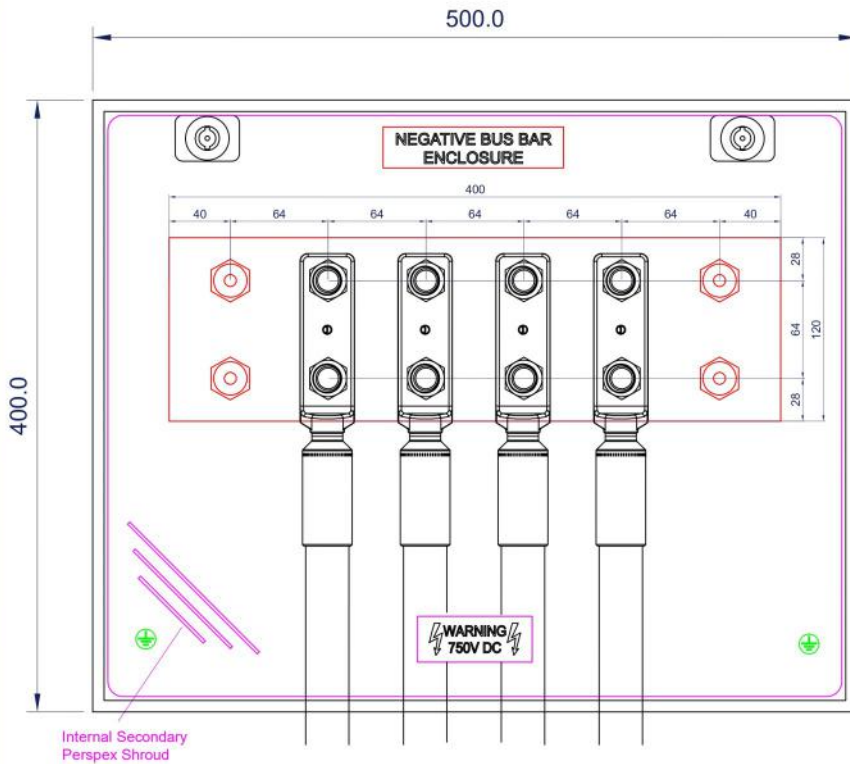
A M Joynes Electrical Designs  
34 Forest Road, Hinckley, Leics, LE10 1HB  
t: 01455 234996 / 01455 616686  
e: info@amjelectricaldesigns.co.uk  
w: www.amjelectricaldesigns.co.uk

Customer:  
A M Joynes Electrical Designs  
34 Forest Road, Hinckley, Leics, LE10 1HB  
t: 01455 234996 / 01455 616686  
e: info@amjelectricaldesigns.co.uk  
w: www.amjelectricaldesigns.co.uk

Title: Negative Busbar Enclosure 1

A	Rev:	Description:	By:	Date:
Amendments				
	Drawing Number:	AMJ/NBB/1	Drawn:	JMJ
	Quote Number:	-	Checked:	AMJ
			Date:	12-08-2022
			Sheet:	1 off 1

Figure 1.2 - AMJ/NBB/2



- General Notes:
- 1 - Tinned Copper Bar 400mm Long x 120mm Wide x 6mm Thick
  - 2 - Mounted on M8 x 50mm High Stand Off Insulators
  - 3 - To Accept upto 4 off Cembre 2 Hole CAA240-1G-2M16-6 Lugs
  - 4 - M16x40mm BZP Set Screws, M16 Flat Washers, Springs & Nuts
  - 5 - 2 x M12x45mm Earth Studs Fixed To Mounting Plate
- Panel Finish : IP66, IK-10 Fibreglass-Reinforced Polyester,  
Light Grey RAL 7035  
Panel Depth ; 200mm



A M Joynes Electrical Designs  
34 Forest Road, Hinckley, Leics, LE10 1HB  
t: 01455 234996 / 01455 616686  
e: info@amjelectricaldesigns.co.uk  
w: www.amjelectricaldesigns.co.uk

Customer:  
A M Joynes Electrical Designs  
34 Forest Road, Hinckley, Leics, LE10 1HB  
t: 01455 234996 / 01455 616686  
e: info@amjelectricaldesigns.co.uk  
w: www.amjelectricaldesigns.co.uk

Title: Negative Bus Bar Enclosure 2  
To Accept upto 4 x Cembre CAA240-1G-2M16-6  
Rated at 750V DC

A	Rev:	Description:	By:	Date:
Amendments				
	Drawing Number:	AMJ/NBB/2	Drawn:	JMJ
	Job Number:	-	Checked:	AMJ
			Date:	14/10/2021
			Sheet:	1 off 1

Figure 2.1 - AMJ/NBB/3A

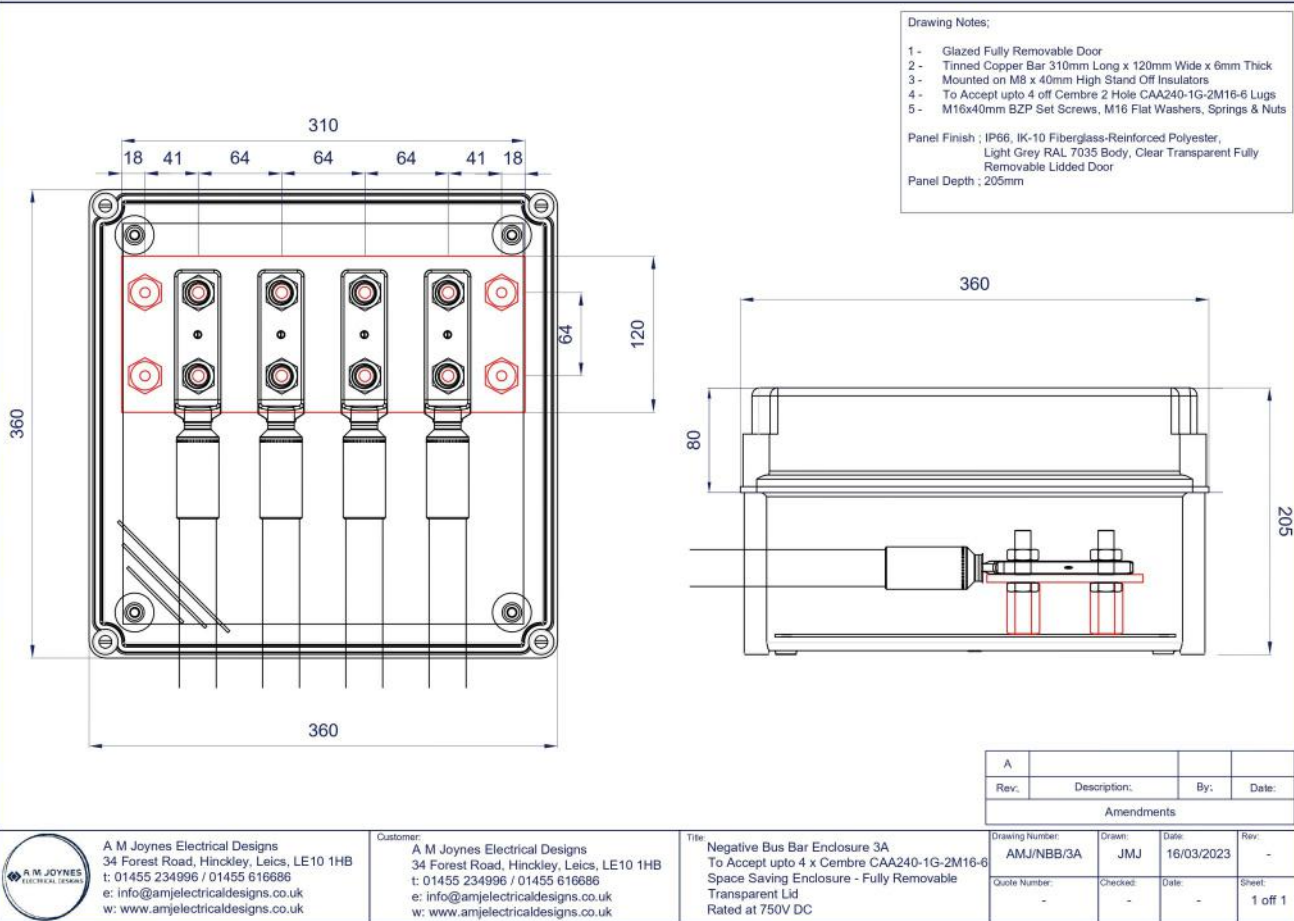


Figure 2.2 - AMJ/NBB/4

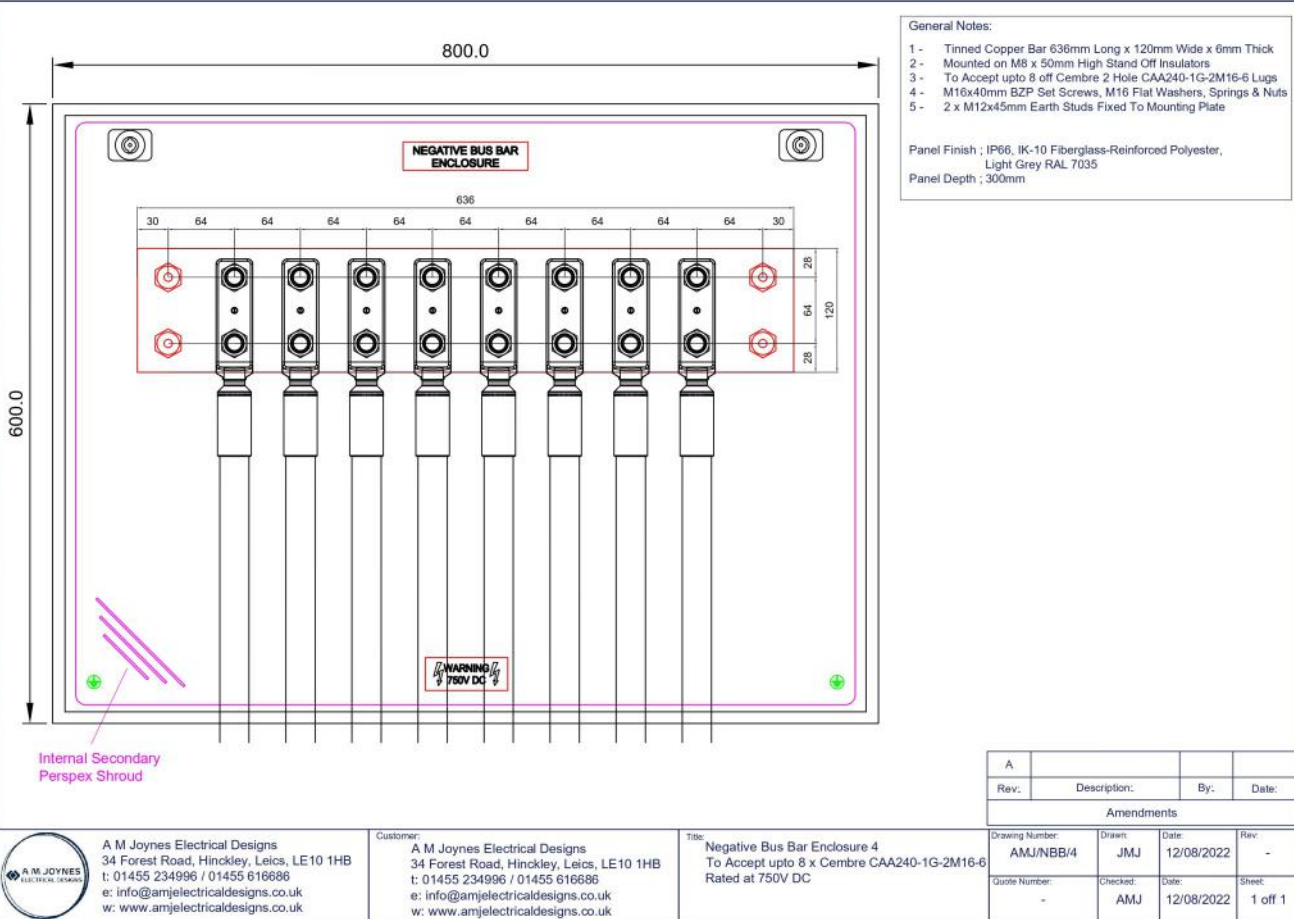


Figure 3.1 - AMJ/NBB/5

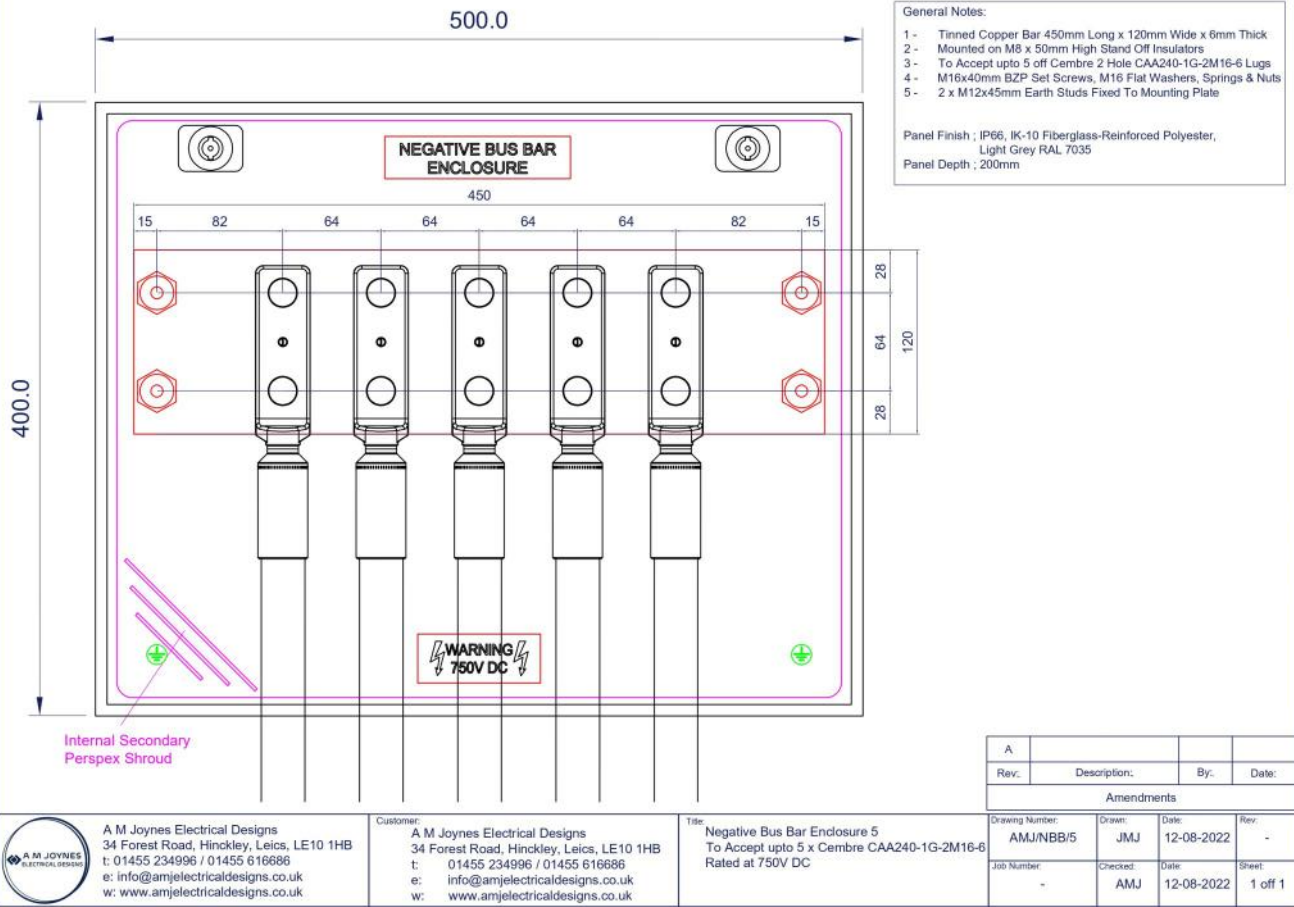


Figure 3.2 - AMJ/NBB/6

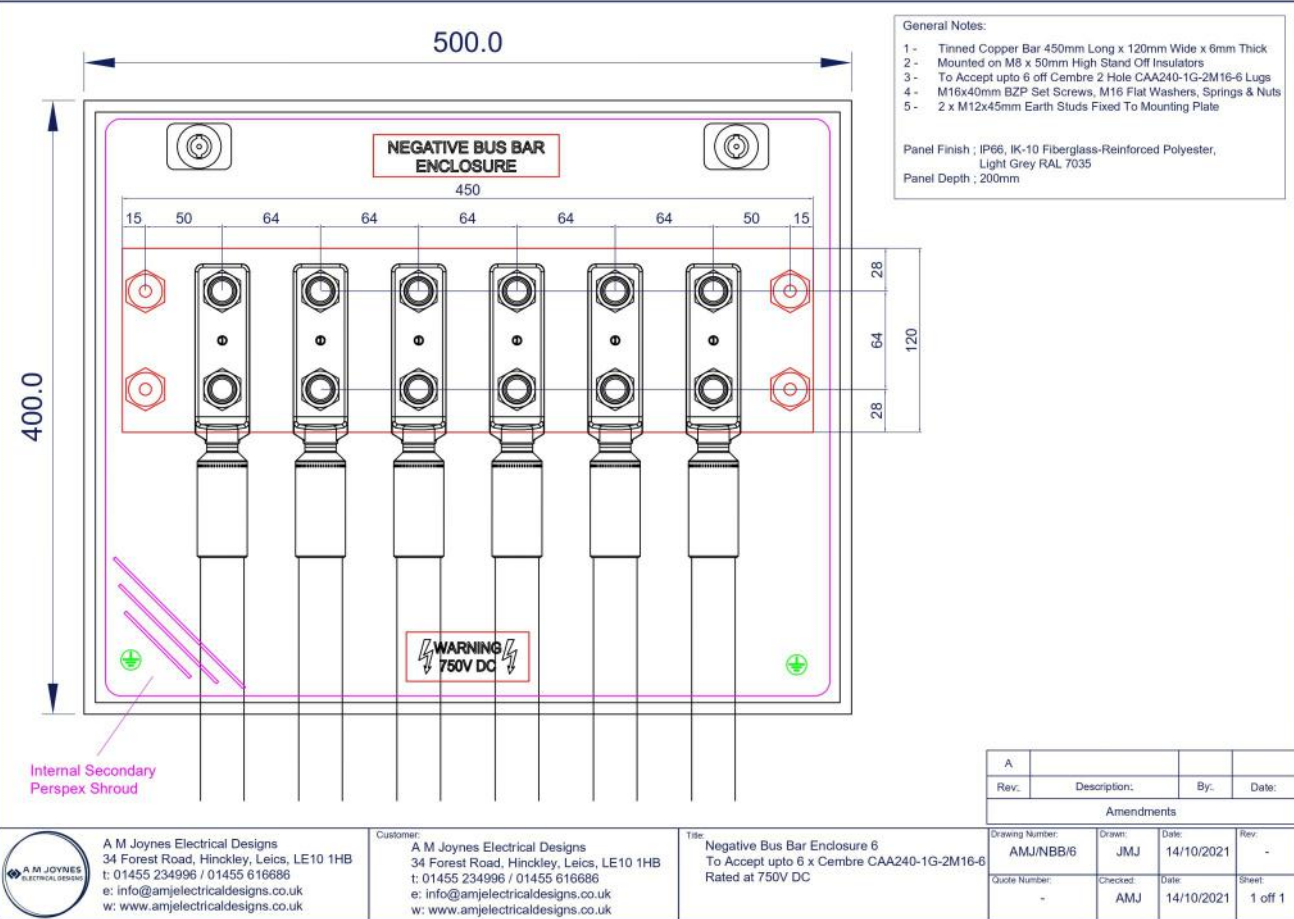


Figure 4.1 - AMJ/NBB/7

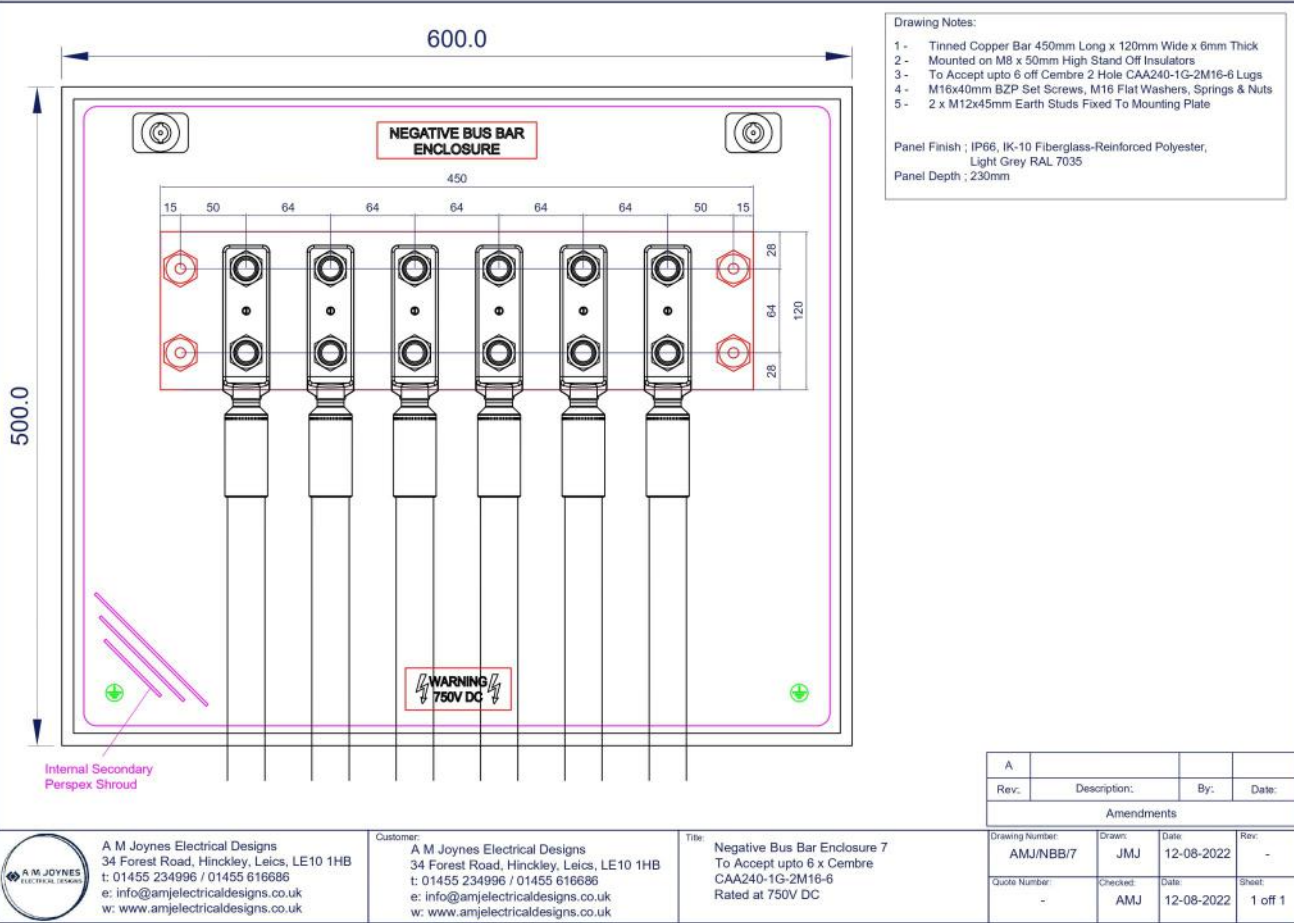


Figure 4.2 - AMJ/NBB/7.1A

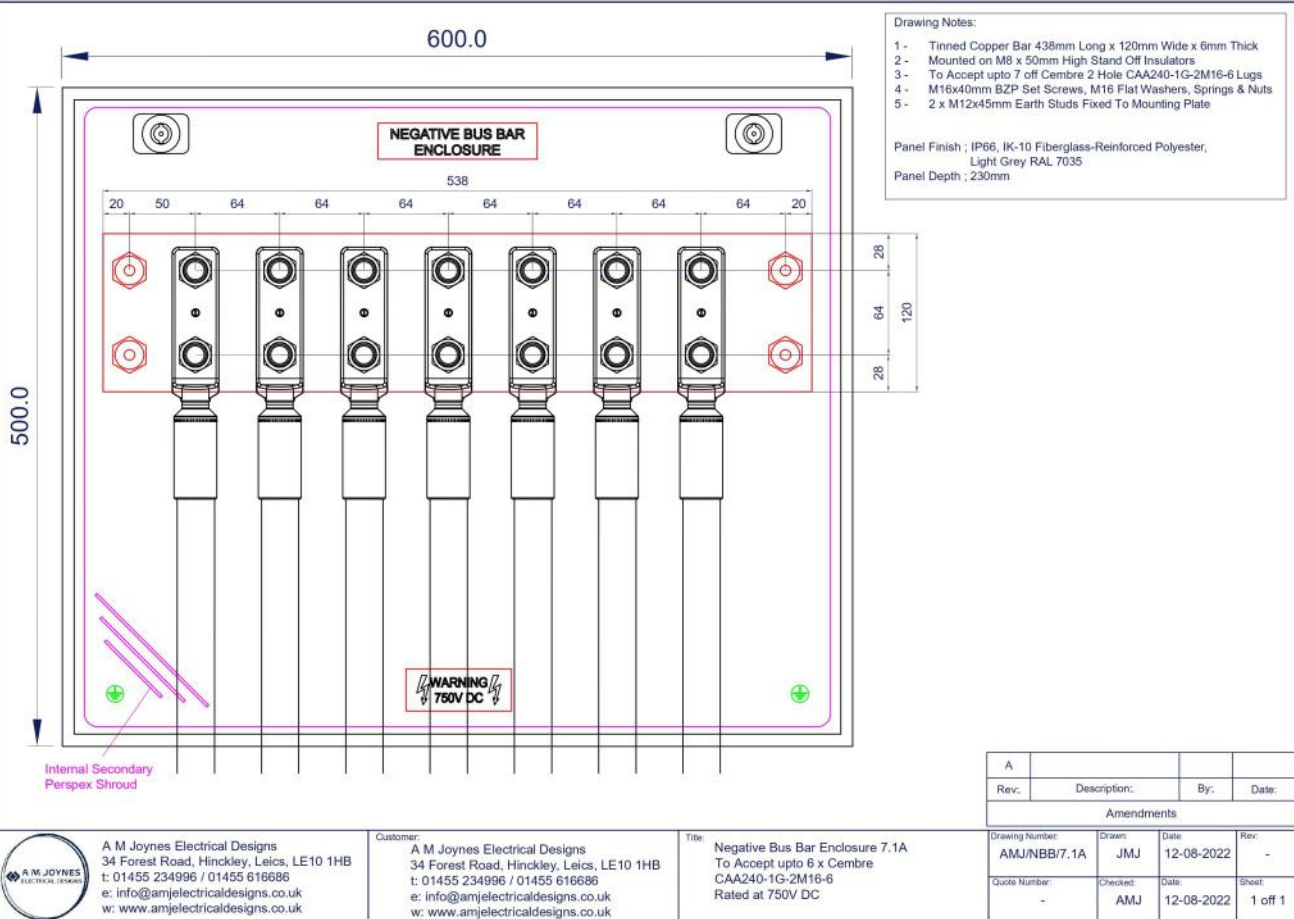
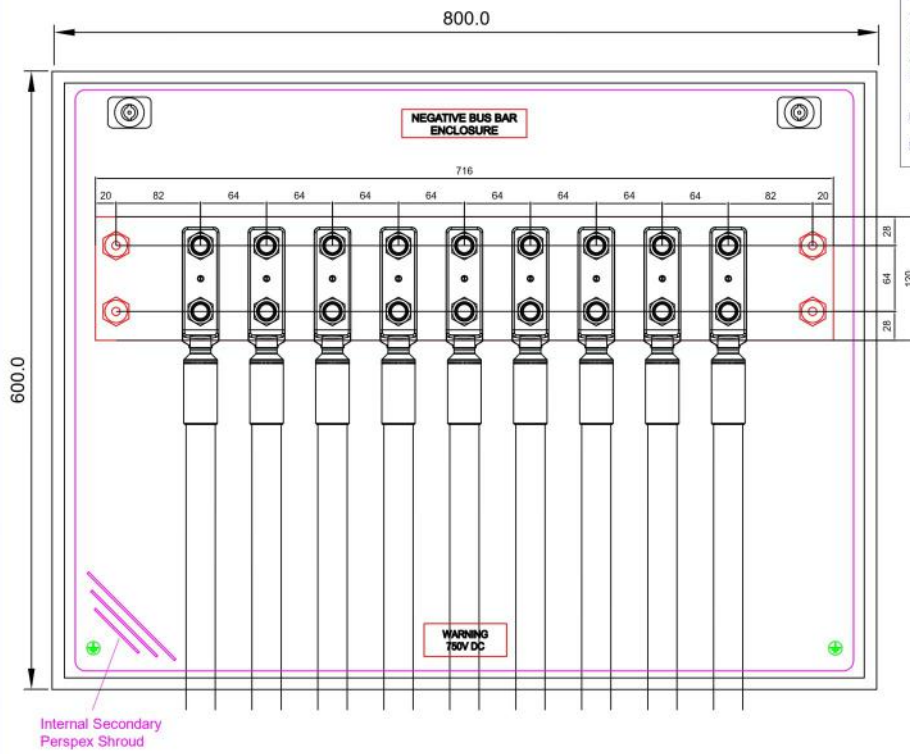


Figure 5.1 - AMJ/NBB/9



General Notes:  
 1 - Tinned Copper Bar 716mm Long x 120mm Wide x 6mm Thick  
 2 - Mounted on M8 x 50mm High Stand Off Insulators  
 3 - To Accept upto 9 off Cembre 2 Hole CAA240-1G-2M16-6 Lugs  
 4 - M16x40mm BZP Set Screws, M16 Flat Washers, Springs & Nuts  
 5 - 2 x M12x45mm Earth Studs Fixed To Mounting Plate

Panel Finish : IP66, IK-10 Fibreglass-Reinforced Polyester,  
 Light Grey RAL 7035  
 Panel Depth ; 300mm

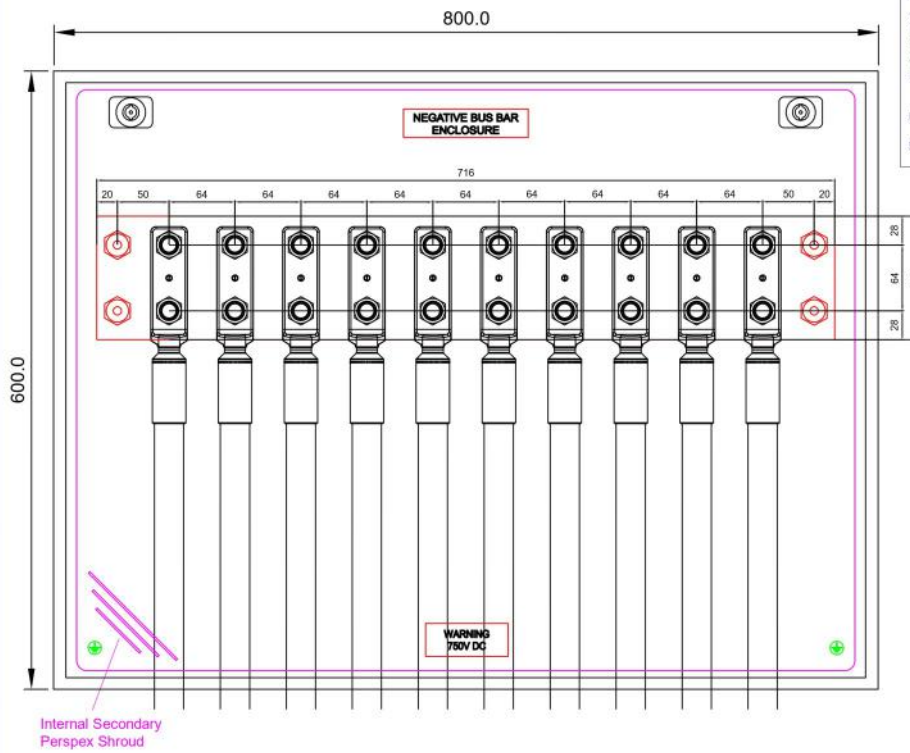
A M Joynes Electrical Designs  
 34 Forest Road, Hinckley, Leics, LE10 1HB  
 t: 01455 234996 / 01455 616686  
 e: info@amjelectricaldesigns.co.uk  
 w: www.amjelectricaldesigns.co.uk

Customer: A M Joynes Electrical Designs  
 34 Forest Road, Hinckley, Leics, LE10 1HB  
 t: 01455 234996 / 01455 616686  
 e: info@amjelectricaldesigns.co.uk  
 w: www.amjelectricaldesigns.co.uk

Title: Negative Bus Bar Enclosure 9  
 To Accept upto 9 x Cembre CAA240-1G-2M16-6  
 Rated at 750V DC

Rev:	Description:	By:	Date:
Amendments			
Drawing Number:	AMJ/NBB/9	Drawn:	JMJ
Quote Number:	-	Checked:	AMJ
Date:	12/08/2022	Date:	12/08/2022
Rev:	-	Sheet:	1 off 1

Figure 5.2 - AMJ/NBB/10



General Notes:  
 1 - Tinned Copper Bar 716mm Long x 120mm Wide x 6mm Thick  
 2 - Mounted on M8 x 50mm High Stand Off Insulators  
 3 - To Accept upto 10 off Cembre 2 Hole CAA240-1G-2M16-6 Lugs  
 4 - M16x40mm BZP Set Screws, M16 Flat Washers, Springs & Nuts  
 5 - 2 x M12x45mm Earth Studs Fixed To Mounting Plate

Panel Finish : IP66, IK-10 Fibreglass-Reinforced Polyester,  
 Light Grey RAL 7035  
 Panel Depth ; 300mm

A M Joynes Electrical Designs  
 34 Forest Road, Hinckley, Leics, LE10 1HB  
 t: 01455 234996 / 01455 616686  
 e: info@amjelectricaldesigns.co.uk  
 w: www.amjelectricaldesigns.co.uk

Customer: A M Joynes Electrical Designs  
 34 Forest Road, Hinckley, Leics, LE10 1HB  
 t: 01455 234996 / 01455 616686  
 e: info@amjelectricaldesigns.co.uk  
 w: www.amjelectricaldesigns.co.uk

Title: Negative Bus Bar Enclosure 10  
 To Accept upto 10 x Cembre  
 CAA240-1G-2M16-6  
 Rated at 750V DC

Rev:	Description:	By:	Date:
Amendments			
Drawing Number:	AMJ/NBB/10	Drawn:	JMJ
Quote Number:	-	Checked:	AMJ
Date:	12/08/2022	Date:	12/08/2022
Rev:	-	Sheet:	1 off 1

Figure 6.1 - AMJ/NBB/32

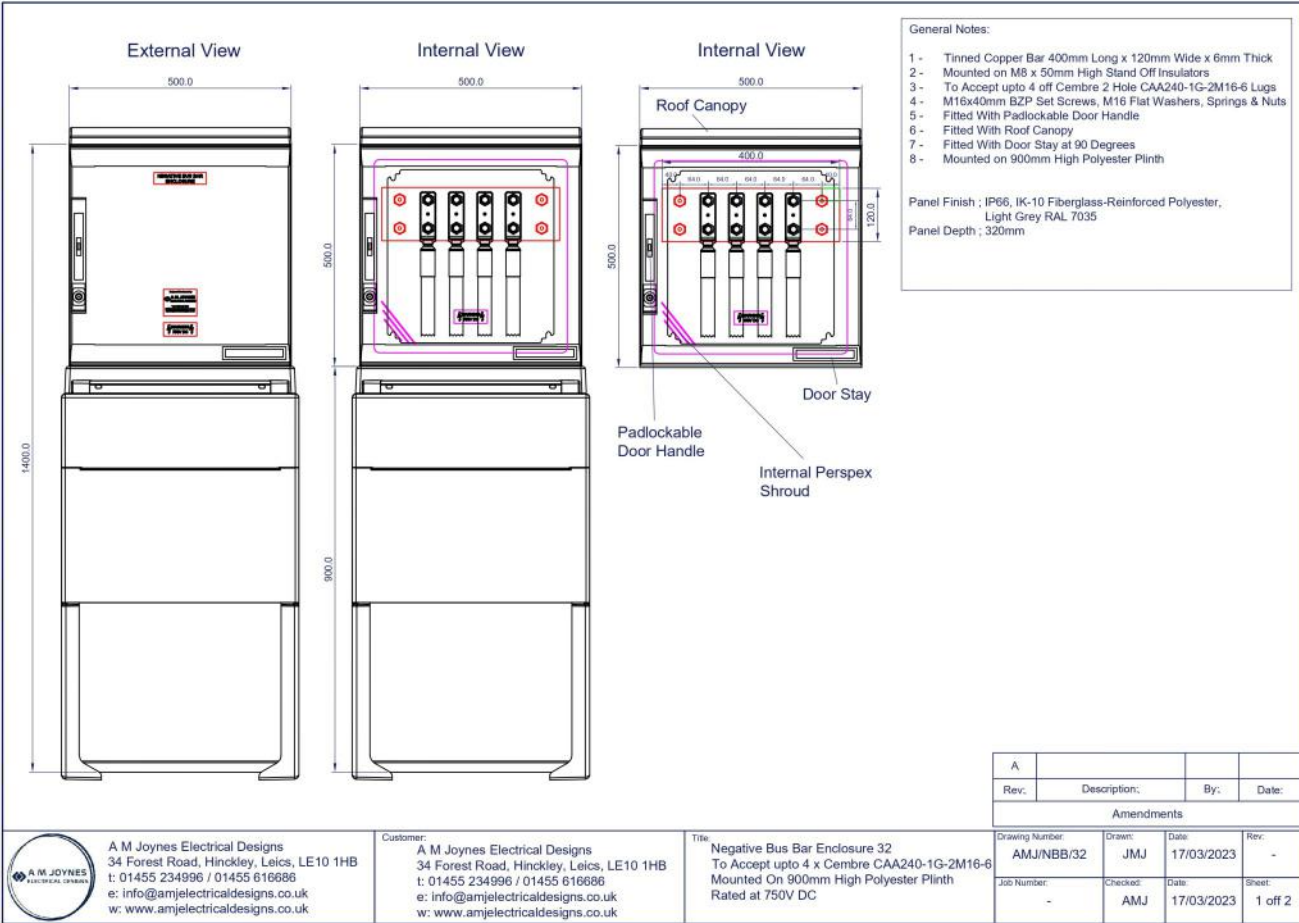


Figure 6.2 - AMJ/NBB/34

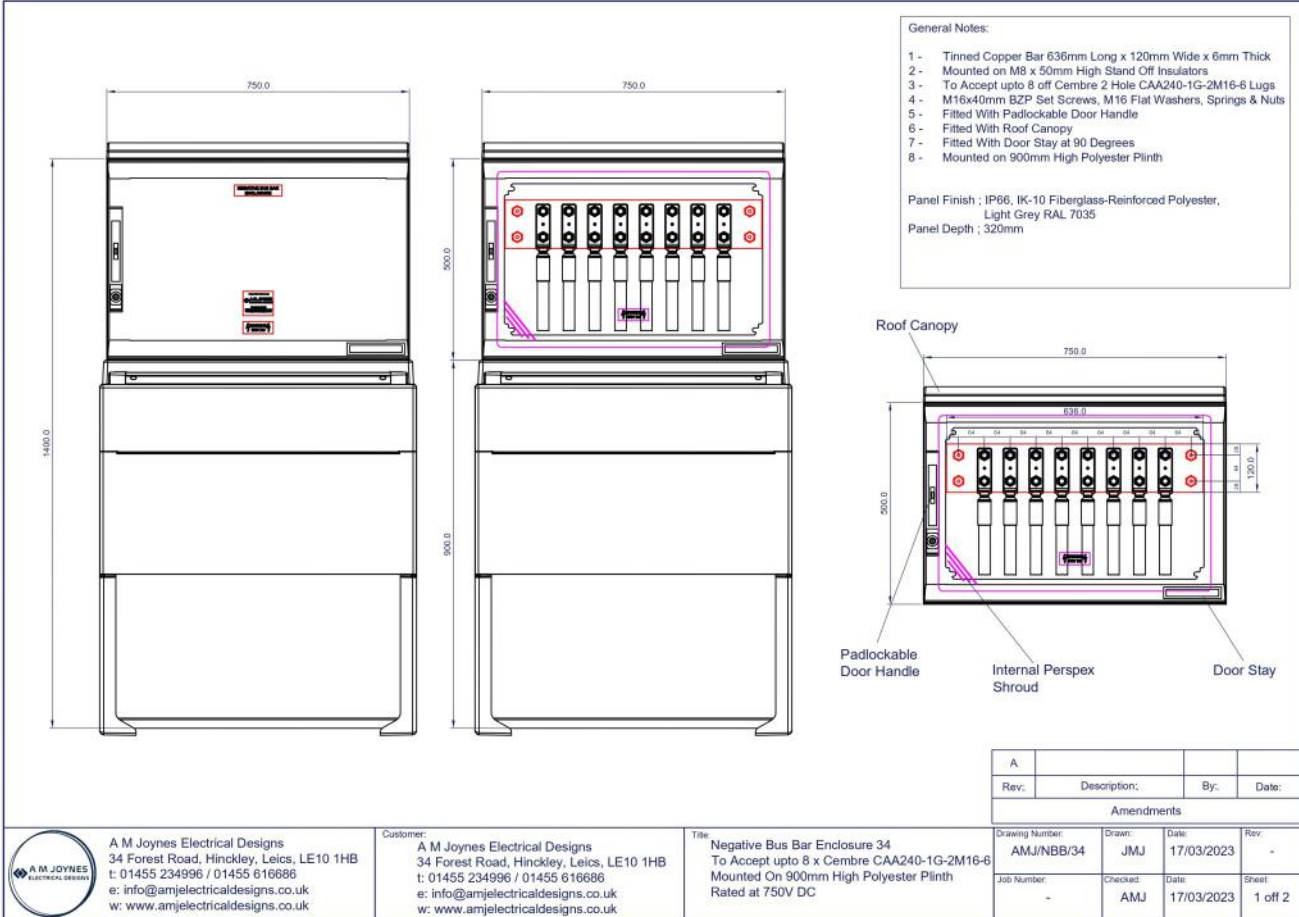
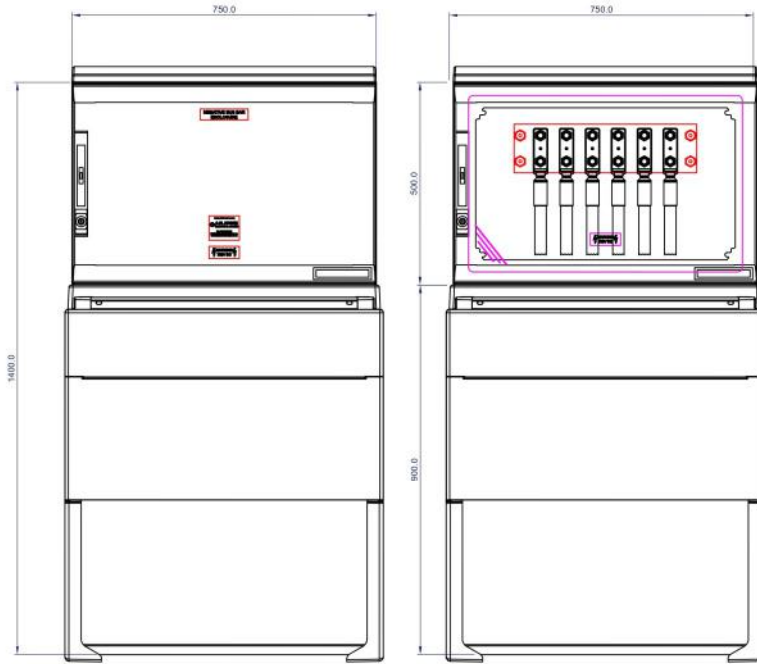




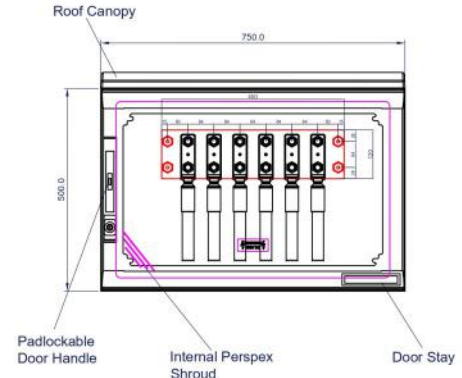
Figure 7.1 - AMJ/NBB/36



General Notes:

- 1 - Tinned Copper Bar 450mm Long x 120mm Wide x 6mm Thick
- 2 - Mounted on M8 x 50mm High Stand Off Insulators
- 3 - To Accept upto 6 off Cembre 2 Hole CAA240-1G-2M16-6 Lugs
- 4 - M16x40mm BZP Set Screws, M16 Flat Washers, Springs & Nuts
- 5 - Fitted With Padlockable Door Handle
- 6 - Fitted With Roof Canopy
- 7 - Fitted With Door Stay at 90 Degrees
- 8 - Mounted on 900mm High Polyester Plinth

Panel Finish ; IP66, IK-10 Fiberglass-Reinforced Polyester,  
Light Grey RAL 7035  
Panel Depth ; 320mm



A			
Rev:	Description:	By:	Date:
Amendments			
Drawing Number:	Drawn:	Date:	Rev:
AMJ/NBB/36	JMJ	17/03/2023	-
Job Number:	Checked:	Date:	Sheet:
-	AMJ	17/03/2023	1 off 2

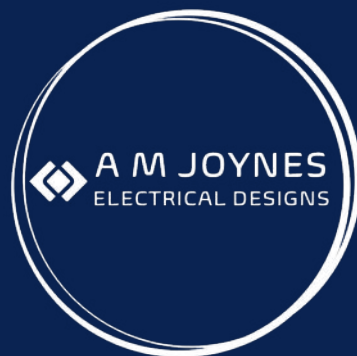


A M Joynes Electrical Designs  
34 Forest Road, Hinckley, Leics, LE10 1HB  
t: 01455 234996 / 01455 616686  
e: info@amjelectricaldesigns.co.uk  
w: www.amjelectricaldesigns.co.uk

Customer: A M Joynes Electrical Designs  
34 Forest Road, Hinckley, Leics, LE10 1HB  
t: 01455 234996 / 01455 616686  
e: info@amjelectricaldesigns.co.uk  
w: www.amjelectricaldesigns.co.uk

Title: Negative Bus Bar Enclosure 36  
To Accept upto 6 x Cembre CAA240-1G-2M16-6  
Mounted On 900mm High Polyester Plinth  
Rated at 750V DC

Figure 5.2 - AMJ/NBB/-



Head Office:

34 Forest Road

Hinckley

Leicestershire

LE10 1HB

Tel: 01455 234996

Email: [info@amjelectricaldesigns.co.uk](mailto:info@amjelectricaldesigns.co.uk)

Web: [www.amjelectricaldesigns.co.uk](http://www.amjelectricaldesigns.co.uk)

Workshop:

Units 53 & 73 Sparkenhoe Business Centre

Southfield Road

Hinckley

Leicestershire

LE10 1UB

Tel: 01455 616686

Email: [info@amjelectricaldesigns.co.uk](mailto:info@amjelectricaldesigns.co.uk)