



Ellenborough Park Spa







A wooden pergola with a stone archway in the background, leading to a garden path. The pergola is made of light-colored wood and has a stone wall with an arched opening in the background. A paved path leads through the archway. There are green plants on either side of the path.

Take some much needed time for *yourself*

Our soul-soothing Spa is a capsule of serenity and wellbeing, complete with enticing treatments, a sauna, steam room, Jacuzzi, outdoor heated pool, and gym, not forgetting the exclusive Spa Garden Retreat. Whether it's a relaxing afternoon or a lazy weekend filled with some much-needed pampering, our cosy and intimate spa set in our historic, listed building and surrounded by glorious Gloucestershire countryside is the perfect place.



# ELEMIS

## EXPERT TOUCH FACIALS

GLOBALLY RENOWNED, HANDS-ON FACIAL TREATMENTS

25 MINUTES £85 / 50 MINUTES £115

### NOURISH FACIAL

*Cleanse, Rebalance & Revive*

Boost skin radiance with our triple-cleanse facial with a blend of superfood-infused facial oils to leave your skin feeling nourished, rebalanced and revived.

### REVEAL FACIAL

*Resurface, Smooth & Glow*

Powered by our patented Tri-Enzyme technology, this facial helps to minimise the look of pores and uneven skin texture, revealing skin that looks visibly resurfaced, smoothed and glowing.

### RENEW FACIAL

*Hydrate, Lift & Firm*

Improve skin firmness, whilst reducing the look of fine lines and wrinkles with our clinically proven formulas and skin-lifting massage techniques. After just one treatment the complexion looks supremely hydrated, lifted and firm.

### DEFINE FACIAL - 80 MINUTES £145

*Energise, Rejuvenate & Sculpt*

This innovative facial captures the power of clinically proven, intelligent skincare to deliver transformative results for energised, rejuvenated and sculpted-looking skin.



# ELEMIS

## EXPERT TECH FACIALS

GROUND-BREAKING TECHNOLOGY MEETS ACTIVE  
INGREDIENTS & TRANSFORMATIVE TOUCH

50 MINUTES £120

### RADIANCE + REVIVE FACIAL

*Rebalance, Nourish & Glow*

Revive tired skin with our advanced Ultrasonic Peel, teamed with Oxygen Infusion to plump and Galvanic technology to nourish, leaving your skin rebalanced, nourished and radiant.

### SMOOTH + POLISH FACIAL

*Reset, Resurface & Brighten*

Reset uneven skin tone and texture with our Ultrasonic Peel to refine, LED Light Mask to re-energise and Galvanic technology to nourish, revealing bright, polished and smooth skin.

### LIFT + REJUVENATE FACIAL

*Renew, Plump & Tone*

Restore your skin's vitality with our targeted Microcurrent technology for the ultimate skin lift, Ultrasonic Peel to gently exfoliate, and Oxygen Infusion to plump. Skin will appear renewed, toned and lifted.

### SCULPT + FIRM FACIAL - 80 MINUTES £150

*Revitalise, Strengthen & Define*

Our ultimate treatment, this multi-faceted facial is customised to target your skin needs using all BIOTEC technologies for a transformative facial experience like no other. Your complexion will be left revitalised, strengthened and defined.





# ELEMIS

## EXPERT BODY TREATMENTS

### DEEP TISSUE TENSION-EASE MASSAGE

*Renewed, Focused & Grounded*

25 MINUTES £85 / 50 MINUTES £115 / 80 MINUTES £145

Perfect for combating a busy lifestyle, this massage offers more than just muscle relaxation: it is tailored to ease tension and target deep-seated muscle knots, leaving you feeling renewed, grounded and focused.

### TRANSFORMATIVE HOT STONE MASSAGE

*Soothe, Relax & Relieve*

25 MINUTES £85 / 50 MINUTES £115 / 80 MINUTES £145

This deeply transformative treatment incorporates heated volcanic stones that are worked into the body, persuading the muscles to relax and soothe a tired mind and relieve aching muscles.

### PEACEFUL PREGNANCY MASSAGE

*Nurture, Restore & Calm*

25 MINUTES £80 / 50 MINUTES £110 / 80 MINUTES £140

This tranquil and restorative mother-to-be massage deeply hydrates skin. Designed for optimum wellbeing, leaving you nurtured, restored and calm.

### ABSOLUTE FACE + BODY RITUAL

*Restore, Rejuvenate & Renew*

50 MINUTES £115 / 80 MINUTES £145 / 100 MINUTES £205

Immerse yourself in luxury with this tailored treatment. Choose your own combination of facial and body treatment, or let your therapist prescribe the perfect treatment to leave you feeling restored from head to toe.

## **FREESTYLE SWEDISH MASSAGE**

25 MINUTES £80 / 50 MINUTES £110 / 80 MINUTES £140

A tailored massage designed to release tension and stress. The therapist will adapt the pressure to help sweep you off to the land of eased muscles and calm thoughts.

## **BACK AND SCALP MASSAGE**

40 MINUTES £95

Tension and stress will be relieved as the therapist will simply concentrate on your back, neck, shoulders and scalp.

## **SCALP MASSAGE**

25 MINUTES £80

A blissful massage focusing on melting the tension around the shoulders, neck and scalp. Using a blend of oils to hydrate and nourish both hair and scalp.

## **INTENSELY CLEANSING SALT SCRUB**

25 MINUTES £80

The extraordinary cleansing power of salt gently sloughs away dead skin cells, encouraging the regeneration of new cells and perfectly prepping the skin. Followed with deeply nourishing body oil, delivering velvety soft and invigorated skin.







© Cotswold Tourism, ByEmmaJane





# SIGNATURE RITUALS

## DE-STRESS BODY RITUAL

50 MINUTES £115

A tailored treatment designed to target areas of tension and leave the body de-Stressed and relaxed. Targeting the Back, Neck and Shoulders followed by a foot massage and finishing on the Scalp to alleviate daily stress.

## REVITALISE FACE RITUAL

50 MINUTES £115

Refresh & Revitalise tired skin with this tailored treatment, designed to leave skin radiant and brightened. Relax with a facial followed by Scalp massage & Aromatic foot treatment.

## ELLENBOROUGH PARK SIGNATURE TREATMENT

80 MINUTE £155


The ultimate experience featuring an aromatic foot ritual with full body exfoliation, followed by a back, neck and shoulder massage. You will be completely rejuvenated and relaxed from head-to-toe.

## TAILORED FOR YOU

100 MINUTES £215

A truly Indulgent experience Tailored just for you. Your therapist will combine different massage techniques to create a bespoke massage and face treatment.





# JAPANESE HEAD SPA

## CLASSIC TREATMENT

50 MINUTES £115

Experience deep relaxation, inspired by traditional wellness rituals. This luxurious session includes a scalp analysis, essential oil massage, exfoliation, double cleanse, conditioning mask, and steam therapy – all designed to soothe the mind, boost circulation, and promote healthy, radiant hair.

## LUXURY TREATMENT

80 MINUTES £145

Immerse yourself in pure tranquility. This revitalising ritual includes a scalp analysis, essential oil stimulation, exfoliation, double shampoo, conditioning mask, soothing waterfall halo, steam therapy, and a rejuvenating Elemis facial—promoting deep relaxation, healthy hair, and radiant skin.

## JAPANESE HEAD SPA PACKAGES

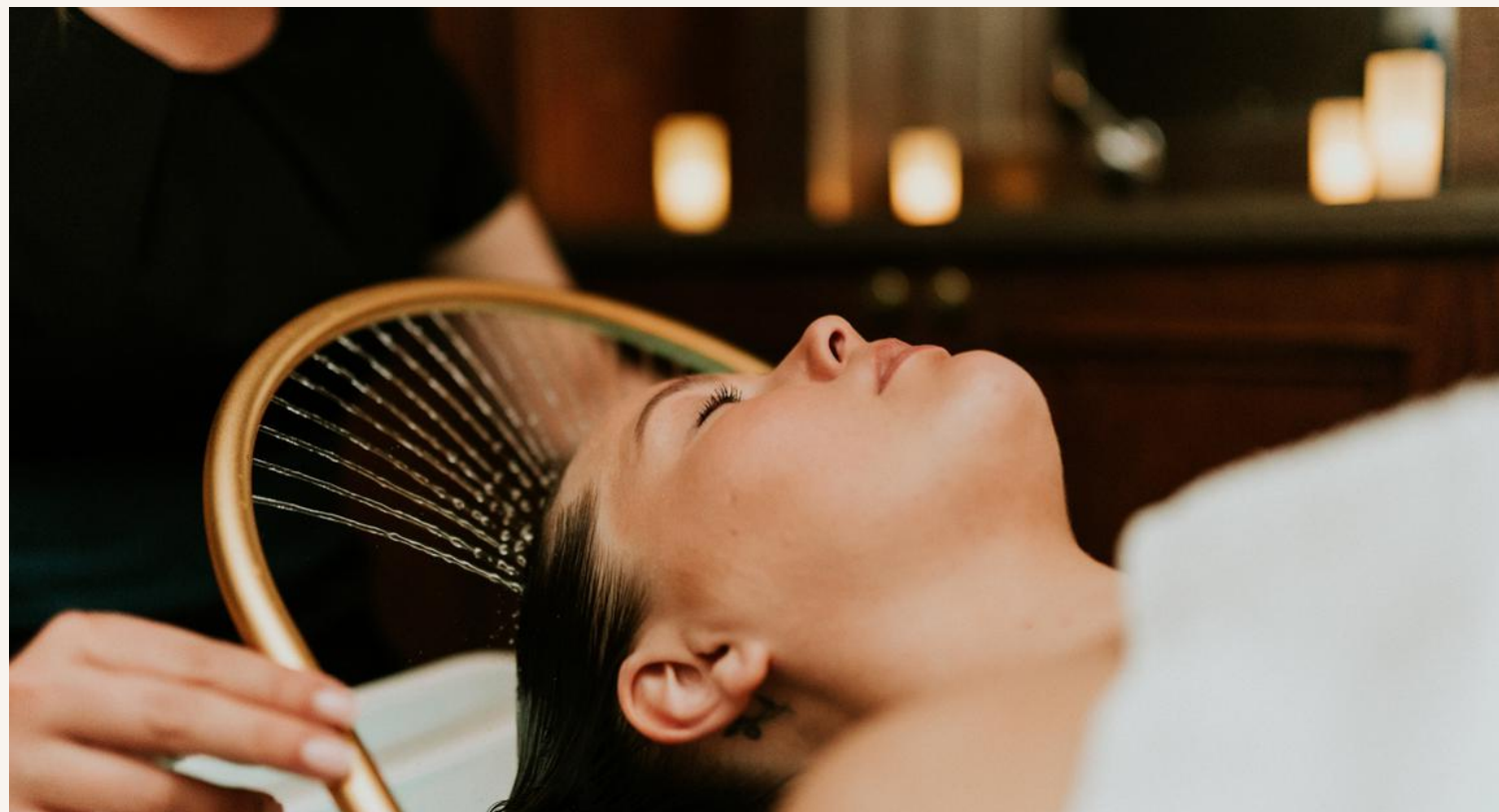
FROM £145

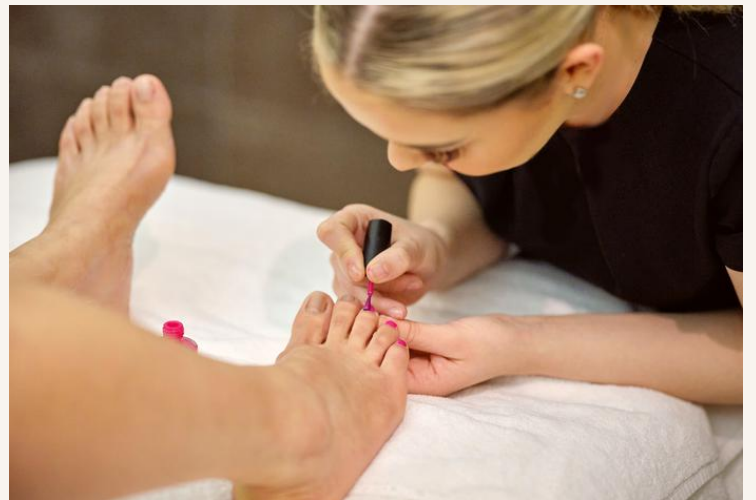
Unwind with our Tranquil Waters, or Essence of Tranquility spa packages, both featuring a Japanese Head Spa Treatment of varying lengths, spa access, light lunch with Prosecco, and use of robes, towels, and slippers. Essence of Tranquility also includes an Elemis Facial for deeper relaxation.

## BOOK ALL SPA TREATMENTS & PACKAGES:











# MANICURES & PEDICURES

PLEASE NOTE WE CANNOT REMOVE GEL POLISH

## LUXURY MANICURE

55 MINUTES £80

A luxurious Manicure with the added benefits. Hands and cuticles are conditioned and moisturised. Nails are beautifully shaped and finished with nail polish.

## LUXURY PEDICURE

55 MINUTES £80

Hard skin is removed, feet and legs are massaged with conditioning creams. Cuticles are groomed & toe nails are shaped and perfectly polished.

## WAXING

EYEBROW WAX £14

EYEBROW TINT £19

EYELASH TINT £34

EYELASH, EYEBROW TINT &

EYEBROW WAX £50

LIP WAX £14

CHIN WAX £14

UNDER ARM WAX £14

HALF LEG WAX £29

FULL LEG WAX £34







# SPA GARDEN RETREAT

## *Rejuvenate, Relax & Unwind*

Take some much-needed time for yourself and escape to our Spa Garden Retreat.

Hide away in our exclusive secret allowing you to be in a state of total of relaxation and indulgence to nurture your wellbeing in the heart of the Cotswolds.

Embrace the natural surroundings and reduce stress whilst enjoying our outdoor thermal facilities. Practice mindfulness as you let the combination of water and the natural environment whisk you away to another world.

An oasis of relaxation, and oozing luxury, the enchanting space is open year-round. Featuring one of only five in the world, relish an ice cold glass of Taittinger Champagne from your very own Taittinger Yacht Box, or why not enjoy light refreshments in a private and relaxed setting.

Soak in the warmth of the hot tub and sauna, relax in the sunshine, take the plunge in our ice bath, or simply rejuvenate and bask in the tranquillity of the surrounding nature.

BOOK NOW





# USEFUL INFORMATION

## ATTIRE

We request that underwear or swimwear is worn for all treatments. During treatments our therapists are trained to observe client modesty at all times. Swimwear is also requested in the steam room and sauna.

## ARRIVAL

We ask you to arrive 15 minutes before your treatment to allow time to get ready and fill in a consultation form.

## HEALTH CONCERNS

Some treatments are not suitable for certain medical conditions or during pregnancy. To avoid disappointment, please raise any concerns at the time of booking.

## VALUABLES

We recommend phones are put on silent, and that you leave valuables in your locker. Please ensure to retrieve all valuables before leaving and check the pockets of robes as we cannot be held responsible for any losses.

## CANCELLATION POLICY

Spa Treatments require a minimum of 48 hours notice and Spa Packages require 7 days to cancel for a full refund.

## BOOK ALL SPA TREATMENTS & PACKAGES:









ELLENBOROUGH PARK

+44 (0) 1242 545426

[ellenboroughpark.com/spa](https://ellenboroughpark.com/spa)

[spa@ellenboroughpark.com](mailto:spa@ellenboroughpark.com)

Southam Road, Cheltenham, Gloucestershire, GL52 3NJ

