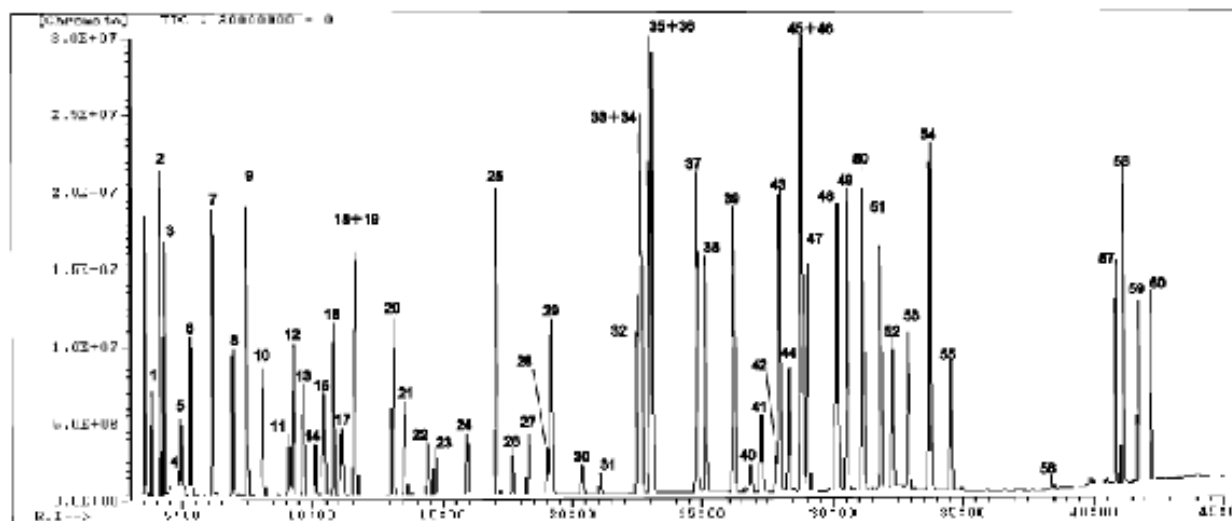


Volatile organic compounds

Data No. GA022-0000



System	: GC/MS	Solutes :	1. Dichlorodifluoromethane	31. 1,2-Dibromoethane
Column	: InertCap AQUATIC 0.32mm I.D. × 60m df=1.4µm		2. Chloromethane	32. Chlorobenzene
Column Temp.	: 40°C (1min) → 3°C/min → 150°C → 10°C/min → 200°C		3. Vinylchloride	33. 1,1,1,2-Tetrachloroethane
Detection	: MS Scan		4. Bromomethane	34. Ethylbenzene
Sample	: Volatile organic compounds		5. Chloroethane	35. m-Xylene
			6. Trichlorofluoromethane	36. p-Xylene
			7. 1,1-Dichloroethene	37. o-Xylene
			8. Dichloromethane	38. Styrene
			9. trans-1,2-Dichloroethene	39. i-Propylbenzene
			10. 1,1-Dichloroethane	40. Bromoform
			11. 2,2-Dichloropropane	41. 1,1,2,2-Tetrachloroethane
			12. cis-1,2-Dichloroethene	42. 1,2,3-Trichloropropane
			13. Chloroform	43. n-Propylbenzene
			14. Bromochloromethane	44. Bromobenzene
			15. 1,1,1-Trichloroethane	45. 2-Chlorotoluene
			16. 1,1-Dichloropropene	46. 1,3,5-Trimethylbenzene
			17. Carbon Tetrachloride	47. 4-Chlorotoluene
			18. 1,2-Dichloroethane	48. tert-Butylbenzene
			19. Benzene	49. 1,2,4-Trimethylbenzene
			20. Trichloroethene	50. sec-Butylbenzene
			21. 1,2-Dichloropropane	51. 4-Isopropyltoluene
			22. Bromodichloromethane	52. 1,3-Dichlorobenzene
			23. Dibromomethane	53. 1,4-Dichlorobenzene
			24. cis-1,3-Dichloro-1-propene	54. n-Butylbenzene
			25. Toluene	55. 1,2-Dichlorobenzene
			26. trans-1,3-Dichloro-1-propene	56. 1,2-Dibromo-3-chloropropane
			27. 1,1,2-Trichloroethane	57. 1,2,4-Trichlorobenzene
			28. 1,3-Dichloropropane	58. Hexachloro-1,3-butadiene
			29. Tetrachloroethene	59. Naphthalene
			30. Dibromochloromethane	60. 1,2,3-Trichlorobenzene