

Winchelsea



Star

Price \$1

Your Weekly Community Newspaper

Since 1977

Vol 46 Ed 6

Tuesday 21 February 2023

winchelseastar.org.au

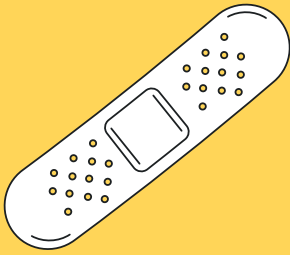


**Robbie Clark receiving
Builder key for services
to Lions Club (Page 3)**



THIS SUMMER, IF WE DON'T GET COVID WE CAN'T SPREAD COVID.

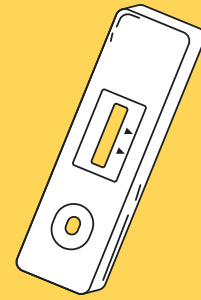
Staying well this summer can be as easy as



staying up to date with your booster vaccine.



talking to your doctor: if you are at risk of becoming unwell, you may be eligible for COVID medicines.



always testing with a RAT if you feel unwell.



staying home if you feel unwell.



catching up outdoors or in places with open doors and windows.



wearing a mask when it's crowded indoors.

🔍 coronavirus.vic.gov.au

STAY WELL THIS SUMMER



Winchelsea Lions Club inducts new members

Winchelsea Lions Club had great pleasure in inducting three new members at a dinner at the Golf Club.

On a warm summer night our meal was incredibly catered for by Sweet Thyme, many thanks guys for a wonderful meal and also many thanks to the guys from the Golf Club who very capably manned the bar.

Our guests were Sue and Rob Eyton from Lara Lions.

Sue very capably inducted our new members Maureen and Raymond Gunson and Graham Kenafacke into the Lions family.

Our own member Robbie Clark also received the builder key for his services to the club.

Sue is also one of the wonderful Lions who travel with the skin cancer care truck. Both she and Rob attended when it visited Winchelsea last June. Sue emphasised the importance of regular skin checks.

A great night out for all who attended.



Business Collaboration Grants OPEN




**Are you part of a business network group?
Is your group looking to increase your members and get some events going for 2023?**

Council wants to support thriving and connected business networks to ensure Surf Coast Shire is a place which is resilient, sustainable and inspires innovation. \$2K Grants are available to help with promoting your groups' activities.

Applications close 31 March

For guidelines and eligibility visit surfcoast.vic.gov.au/BusinessGrants

The grants are competitive. Call to discuss your idea and how to submit a great application: **0429 981 653.**



Winchelsea Playgroup

BACK FOR 2023
ON

*Due to Hail Damage to the hall;
Playgroup will not be on until 23/2/23*

ANGLICAN CHURCH,
CNR BARWON TCE &
HOPKINS STREET

\$5 PER FAMILY
BRING A PIECE OF FRUIT TO
SHARE



**Breeze Health and Wellness, Exercise Physiology
32-34 Main Street, Winchelsea (old post office)**

Chronic disease? Injured? Wanting improved athletic performance?
We can help you manage, rehabilitate and prevent many common ailments through movement.
Speak with your GP about a referral for a care plan.
Private health accepted - no referral needed.
Call Brenton on 0428 790 023 to discuss or email breezehealthandwellness@gmail.com
Exercise is Medicine, Motion is Lotion. Move with Ease at Breeze.



**STS
ACCOUNTING
GROUP**

**Your Taxation
&
Superannuation
Specialists.**

Winchelsea
5267 2673
www.surftax.com.au



**Water Supply
Specialists**

WATER SOLUTIONS

74 Dennis Street, Colac
5231 1861

ALL THINGS WATER:
 - PUMPS - PIPES
 - FITTINGS - TANKS
 - POOL CHEMICALS
 - IRRIGATION
 - WATER PURIFICATION
 - SOLAR - REPAIR

- Domestic and Commercial hire equipment
- Industrial welding gas
- Digging and Earthmoving equipment
- New trailers and trailer repairs
- Firewood
- Stockists of Royal Oil Lubricants products
- LPG for domestic and commercial requirements

Give Chris and the Team a call on **5232 1177** or email info@colachire.com.au
www.colachire.com.au
 101 Wallace St Colac 3250




**Made for
more
possibilities**

Victoria Police is made for ambitious people looking for a career with more challenges, excitement, purpose, and possibilities.

Authorised by the Victorian Government, 1 Treasury Place, Melbourne



**MADE
FOR
MORE**



Parent/Carer Meet and Greet Afternoon

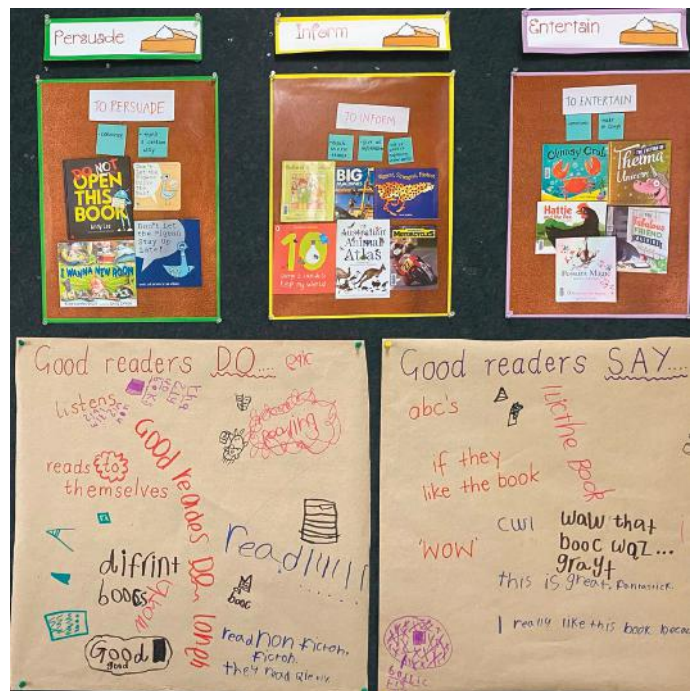
Winchelsea Primary School



Tuesday the 15th of February provided an opportunity for the teachers of Winchelsea Primary School to open up their classrooms for a Parent/Carer Meet and Greet afternoon to strengthen our school and community connection. This was a great chance for parents and carers to come into the school with their

children and be shown how classes have been creating the conditions for a successful year of learning. Many students involved their family members in a math warm up game or showed them around the classroom, pointing out and explaining specific displays.

Attendance was extremely high which allowed for teachers to introduce themselves to parents and carers and have an informal chat about the beginning of the year and what's ahead. We look forward to continuing to involve families and the wider community in school events throughout the year.



Winchelsea Bowls Club By Kitty 'N Jack



Division 3 Saturday Pennant team 2022/23

Geoff Orchard, Alex Heaton-Harris, Paul Sorenson, David Yandell, Andrew Doyle, Rob Knuckey, Ray O'Brien, Jamie McConachy.

Wendy Walters, Annie Walker, Jenny McConachy, Ross Erwin, Geoff Hateley

Good work teams and don't you all look great!

PENNANT RESULTS

Tuesday February 14th Winchelsea Division 1 were defeated by Colac Central in the Qualifying final under the dome at Colac. Winchelsea won 1 rink, 65 shots to 69 shots. It all came down to the last bowl of the day as we were

holding 3 on the green and may have been able to force the extra end per rink. We have a second chance this Tuesday at Colac Central against Camperdown Golf.

Saturday February 18th Winchelsea 1 were defeated by Simpson at home, winning 1 rink 81/115 shots. This was not the ideal way to end the season and

Winchelsea will play Colac in the elimination final next Saturday.

Saturday February 18th Winchelsea Division 3 defeated Simpson away, winning 3 rinks 95/55 shots. Winchelsea 3 play in the Qualifying final next Saturday and finishing on top have the double chance.

To all finals players and supporters, may the bowls be with you !!

WINCHELSEA LIONS CLUB

PAPER RECYCLING

Paper depot rear of Senior Citizens Rooms
Harding Street
NEWSPAPERS,
MAGAZINES,
PHONE BOOKS WANTED



RAISING FUNDS FOR
OUR TOWN & DISTRICT
5267 2011 or 0408 520 606

GREAT Bundle Deal on Bosch Hot Water... FROM ELGAS
Buy any Bosch Blueooth continuous flow hot water model - 16Litre, 20Litre or 26Litre and **Receive \$100* in Elgas bonus LPG gas credits**

*For more details: www.elgas.com.au/appliances/bosch-aptflow-16-20-26-lpg-bundle-sale

AND... for new customers, an additional \$80 WORTH OF LPG GAS CREDITS when you open a new LPG Gas account with Elgas**

**Further details can be viewed at www.elgas.com.au

Ask about the Elgas Easy Payment Plan - 12 months interest free*** on selected LPG appliances
***Further details can be viewed at: www.elgas.com.au/epp

Automatic tanker gas bottle refill OR gas bottle exchange refill is available for home or business....
Call today or visit our website for our many customer benefits and latest offers

131 161
www.elgas.com.au

ELGAS

Scott McDonald
0423 413 829

S.J.R AUTOMOTIVE
ABN 848 483 846 39
13 ALSOP DRIVE, WINCHELSEA VIC 3841

Pixie Wash
Mobile Doggie Care
Dogs up to 20kg
Pixie Heath
0417 586 080

Winchelsea Star

Articles are most welcome and must carry the name and address of the sender.

Weekly deadline is 5pm Friday.

Copy for sports results and weekend events is Sunday 6pm (4pm for hard-copy articles/results left at IGA) unless by prior arrangement.

Copy should be emailed to news@winchelseastar.org.au or left at IGA Supermarket.

The Winchelsea Star reserves the right to edit or not publish any article.

Views expressed are not necessarily those of the Winchelsea Star or its Committee.

500 online subscribers, 250 copies printed for outlets around Winchelsea.

Free subscription to digital version at winchelseastar.org.au

© Winchelsea Star Org. Inc.
All rights reserved.

Winchelsea Star Organisation Inc.
Reg. No. A1479, ABN: 57 207 411 958
winchelseastar.org.au
Po Box 5, Winchelsea, Vic, 3241

Editors:

Carrie Fogan, Yvonne Stevens
Judy Cameron
editor@winchelseastar.org.au

Advertising:

Sasha Gauntlett and Neil McInnes
advertising@winchelseastar.org.au
0408 102 802

Layout/Sub Editors:

Susan Corby, Charles Corby
Stuart Fountain
production@winchelseastar.org.au

Committee

President: Mick O'Mara
president@winchelseastar.org.au

Treasurer: Cathy Cheadle
treasurer@winchelseastar.org.au

Secretary: Tony Phelps
secretary@winchelseastar.org.au

Committee Members:
Linda Carter

Printer: Mud Group
Website: Winch Websites



WINCHELSEA CONCRETING

· Driveways · Sheds · Decorative Concrete · Raft Slabs

Robert Murphy

☎ 0438 235 237

✉ winchelseaconcreting@outlook.com



mels 
MEL'S DANCE CENTRAL

2023 DANCE ENROLMENTS NOW OPEN!

Winchelsea dance
classes commence
1st February 2023

REGISTER NOW

www.melsdancecentral.com.au

Pre-School - Adults
Beginner - Advanced Levels

All About

Mowers & Chainsaws

Repairs to all makes and models of ride on mowers, domestic mowers, pumps, chainsaws, brushcutters and small engines.

Trading Hours: Mon - Fri 8am - 5pm Saturday 8am - 12 noon

5267 2266 Cnr Princes Hwy & Lennox St Winchelsea

www.allaboutmowers.com.au
accounts@allaboutmowers.com.au

FERRIS  STIHL  VICTA

What's happening in Winchelsea



Diamond Day

Saturday 4th March 12 till 4
 \$5 entry
 Senior Citizens Rooms
 Harding Street Winchelsea
 Everybody welcome

Free Evaporative cooler on wheels

“Convair Megacool” -
 Very simple to operate



Free Three Old Couches

Suitable for shed or verandah

Text 0405 632 802 for more information

Singing

Winchelsea Community House has supported the beginning of a regular singing group at the Winchelsea Shire Hall.

2023 will see the continuation of weekly singing Wednesday at 4.45pm at the Shire Hall.

The cost is as follows:

- 10 weeks - \$70
- Concession - \$50 (10 weeks)
- Children under 16 - free

You can also attend on a weekly basis - \$10 a session.

Email your registration to shirehall@winchhouse.org.au

This is an inclusive group that welcomes anyone who wants to experience the joy of singing with others



The Shire Hall

The Shire Hall is becoming a hub for creatives, and there are many creative minds residing here in the Winchelsea community. Voices ring true every Wednesday evening - rumours say the sounds are like a tonic to the ear. The Riverlee arts collective bring their energy every alternate Wednesday, the building absorbs these beautiful qualities. Louise Hall is bringing her years of teaching experience to art classes - a huge opportunity for learning under the guidance of a skilled artist.

If you read this and think you'd like to get involved contact the Winchelsea Community House or email Jill Evans at shirehall@winchhouse.org.au

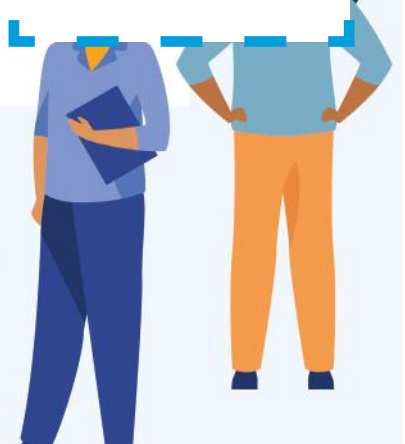
There are two new groups forming in March:

- **Big Ideas** - with food, Friday nights starting Friday 17th March (more news to come)
- **Knitting and Knattering** - Thursday mornings, 10.00am - 12 noon starting Thursday 9th March
-

Jill Evans
 Community Developer

Winch Hospital Auxiliary

Next Auxiliary meeting
 6th March, 3pm,
 Globe Theatre Supper Room.



WINCHELSEA SHIRE HALL
COMMUNITY EXPO
FRIDAY 24TH FEBRUARY 2PM-7PM

WINCHELSEA COMMUNITY HOUSE AND SHIRE HALL IS HOSTING A FREE COMMUNITY EXPO FOR COMMUNITY GROUPS TO COME TOGETHER AND BE AVAILABLE TO NETWORK WITH THE COMMUNITY

COME ALONG AND LEARN MORE ABOUT YOUR COMMUNITY. THERE WILL BE SOME FOOD AVAILABLE FOR PURCHASE ON THE EVENING (BBQ , WOOD FIRE OVEN PIZZA, ICY POLES AND DRINKS) AND AN EASTER COLORING COMPETITION FOR THE LITTLE ONES!

WYLD YOUTH GROUP WILL HAVE THE POD OPEN
 WE LOOK FORWARD TO SEEING EVERYONE THERE



Winchelsea Girl Guides are seeking volunteers

Winch Guides are looking for female adult volunteers interested in joining an enthusiastic, self-motivated team working with girls 5-15yrs in Winchelsea.

Training provided free. Membership of a world wide organisation, travel opportunities, and friendships.

Help us to provide leadership development opportunities for girls and young women, as well as promoting fun and friendship.

Phone Yvonne 0448 673 630
 or Bonnie 0401 386 274



MARKET dates for 2023

- | | |
|--------------------------|---------------------------|
| 1 st January | 2 nd July |
| 5 th February | 6 th August |
| 5 th March | 3 rd September |
| 2 nd April | 8 th October |
| 7 th May | 5 th November |
| 4 th June | 3 rd December |



St Vincent de Paul Society
good works

Covering Meredith, Bannockburn, Anakie, Lethbridge, Inverleigh, Teesdale, Shelford, Elaine and Winchelsea

52219170

Monday - Friday 9am to 2 pm
<http://www.vinnies.org.au>

A caring Catholic organisation offering "a hand up" to all people in need.

Winchelsea Men's Shed



For The Community

51 Hesse Street

Every Wednesday from 9:30am

New members always welcome

For more detail contact:
 Ray Atkinson (Co-ordinator)
 0407 839 139

or
winchmensed@gmail.com

Need a job done?
 Woodworking jobs,
 furniture repairs, small jobs.
 Drop in and talk to us.



Winchelsea Supermarket

Trading Hours

Monday to Saturday

8.30am to 7.30pm

Sunday

10am to 7pm

Ph: 5267 2676

29 Main St, Winchelsea



Market News

Our next Market is Sunday March the 5th

We have a great opportunity for community groups to fundraise by running the Devonshire teas in the Shire Hall, we have March available, please contact Leslie winchelseamarket@gmail.com

We're on the lookout for a social media extraordinaire to help us with our social media posts and general marketing tasks, please contact Kim on 0418 56670.

So our market can run smoothly we are looking out for volunteers to help, once a month early Sunday to assist with arriving stallholders and being a general happy helper.



Winchelsea Historical Society

Winchelsea Street Names

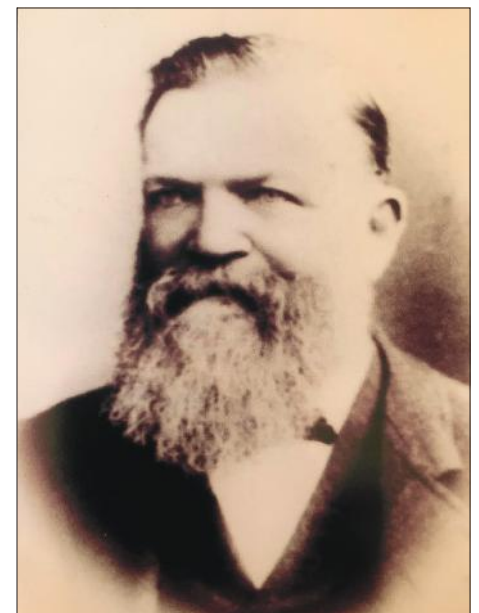
Beal and Trebeck Courts



BEAL AND TREBECK COURTS

Prosper Nicholas Trebeck and Charles Beal built the Barwon Inn 1842 (after being burnt down rebuilt as Barwon Hotel) - the first building in Winchelsea.

Prosper married Eliza Beal, the sister of Charles.



Charles Beal

Simco Plumbing and Gasfitting
 24/7 Emergency service Ph:0400643976

- All General Plumbing and Gasfitting
- Roof and Gutters, Hot Water service changeover
- Split Systems, Air Conditioning and Wood Heaters
- Irrigation, Septic and Treatment plants
- Excavation, Bobcat and Tipper
- Rain water Tank installation
- Renovations and Extensions
- Gas conversions and servicing

Simon McGillivray
 Lic:109610. Free quotes, Fast and friendly service

Free Community Service Advertisements

Services and Activities in Winchelsea



TRAIN SERVICES

To Geelong

Mon - Fri

6:41 am, 7:59am, 11:34am,
2:01pm, 7:37pm

Sat and Sun

9:35am, 1:36pm, 7:18pm

To Warrnambool:

Mon - Fri

9:29am, 2:56pm, (to Colac
5:27pm), 6:45pm, 8:53pm

Sat and Sun

8:47am, 2:49pm, 8:37pm

Country Women's Association



7pm Second Wednesday of Month
Winchelsea Senior Citizens' Hall

Bus to the Hub

For reservations on the weekly bus
to the Eastern Reserve Hub,
please phone 52671202.

Surf Coast Mobile Library

Surf Coast Mobile Library
parked in Hesse Street
(outside Shire Hall) on Fridays
between 2:00 and 5:00pm
unless it is a Public Holiday.

Winchelsea Taxi

0429 672 888 or 5267 2888

Wheelchair accessible
10 seater bus available.

Winchelsea SES

Meeting and training
2nd Wednesday

Training 4th Wednesday

Visitors and inquiries welcome

0408 102 802

Winchelsea and District Combined Probus Club



Meets 1st Monday of the
month at 10am. Senior
Citizens Rooms, Harding
St, Winchelsea. New
members always
welcome.

Enquiries Linda 0439 817 263.

Body Therapy Classes

Yoga, Pilates, Qi Gung and Mindfulness Meditation Practices

Tuesdays 6.15pm \$13 Cash
Catholic Church Hall -School Term Only

Dr Haidee Benning, 0428 177 964

Winchelsea Playgroup

Every second Thursday 10am-12pm
St Thomas Anglican Church Hall
cnr Barwon Tce and Hopkins St, Winchelsea
Contact: Melissa 0456181268
Facebook - Winchelsea Playgroup 2019

New families welcome

Winchelsea Girl Guides

Our Unit meets at the Catholic Church
Hall, Harding St Winchelsea

each Monday 4.30pm-6pm

All girls 5yrs- 15yrs Welcome!

Contact Yvonne Orchard 0448 672 630
or Bonnie Stokes 0401 386 274

1st Modewarre and Winchelsea Scout Group

Joey's: Tuesdays of school term 5-6pm

Cubs: Mondays of school term 6:30-8pm

Scouts: Tuesdays of school term
6:30-8:30pm

All at Modewarre Hall, Cape Otway Rd

Venturers: Wed at Walton's Rd Venturer Den

Contact Marie McPadden 0409 330147

Winchelsea Transfer Station

Opening Hours

Monday	Closed
Tuesday	2pm-4pm
Wednesday	Closed
Thursday	2pm - 4pm
Friday	Closed
Saturday	1.30pm - 3.30pm
Sunday	9.30am - 12.30pm

55 Cressy Road, Winchelsea.

Accepts household garbage,
mixed commercial and industrial waste,
mixed construction and demolition
waste. Accepts recyclable materials.
Accepts one recycle bin two waste bins.
Does NOT accept clean fill.

Thank You. Run Free Amaros

I would like to thank the following people

Charlie Earl (Burial), Phil Robertson and apprentice (Pick-up) for the pick-up of Amaros my pony who passed away on 16/2/23 age 29 years.

Also thank you to the Vet Yurg Cavello who was too late, she'd already passed, but I did get him to do my gelding's feet and learnt something new, how to get long hooves down fast. Also thanks to Lynn Rossiter (sister) for arranging pick-up and burial. Once again thanks to everyone involved it is forever grateful. Now she can rest in peace.

Run on wild horses, run on and be free. I'll take the best one to run under me.

Song by Kenny Rodgers in his movie "Wild Horse Roundup". Which is a great movie.

Thanks to all involved again
Libby Lomas

Winchelsea Land and Rivercare

Working bees are back for 2023

First Saturday of the month. 9am – 10.30

March 4, April 1, May 6.

Meet at Guye Reserve, Barwon Terrace

This month will be spreading mulch and weeding.

All helpers welcome.




direct
TEMPORARY FENCING

FOR HIRE - SUPPLIED & ERECTED - 7 DAYS
GEELONG - BELLARINE - COLAC - SURF COAST
PHONE CAM 0417 310 800

DownRyte Excavations

- Excavations
- Drilling and Piling
- Rock Placement
- Tree and Stump Removal

Sean Hunwick
Mobile: 0409 447 288
Email: downryte@activ8.net.au



Café La Hoot

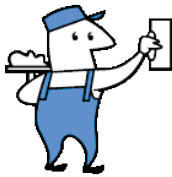
have you tried 'owl' coffee?

1 willis st cafelahoot@gmail.com 0407 528 999

Plasterer & Painter

Daryl Hecker

Domestic & Commercial
Renovations & Repairs
Suspended Ceilings
Dustless Sanding
New Homes
Extensions



Ph 0419 194 799

Antique Repairs

By **Doug Burns** est. 1976

- All Furniture
- French polishing
- Carving
- Veneering
- Wood Turning
- Porcelain



Unusual Requests Welcome

180 Barwon Terrace, Winchelsea

0428 672 704

B & H Modifications Bob Verity

55 Stephenson Road
Winchelsea 3241

Ph: 5267 2467

Mobile: 0411 610 678



Industrial Sewing Machine Work

Caravan Annexes, Trailer Covers,
Shade Sails, Alterations and
Repairs to
Camping and Tents.
Clear PVC Blinds
Repairs to CLEAN Horse Rugs
No Job Too Small
Email: bobverity@southernphone.com.au

Knuckey's Winchelsea Ph: 5267 2011

Knuckey's have in stock a complete range of batteries to suit tractor, heavy machinery, cars, utes

The largest range of the best oil for your vehicles—**CASTROL**—
'when only the best will do'

The largest range of V belts.
A, B, C, D M Sections
Bolts and nuts for all occasions
Steel cut to size

AFS BOOKKEEPING



"Your local bookkeeper"

Bookkeeping
Administration
Payroll
BAS Services
Xero / Myob
Reckon / Quickbooks
Registered BAS Agent

Angelique Snetselaar

0456 077 485

info@afsbookkeeping.com.au
www.afsbookkeeping.com.au



Women's Workshop

Wednesdays 2:00 to 4:30pm.

Learn practical home maintenance skills.

Learn basic woodworking design & construction techniques and hand tool use.

Discuss your ideas/needs with us.

SMS Stuart - 0468 358 282 at the Winchelsea Men's Shed

email: winchmenshed@gmail.com



mainly music
est. 1990

Fun, Interactive music sessions for pre-school children (0-4 y.o.) and parents/caregivers

When: Mondays from 10 to 11 am
(runs during school terms)

Where: St Thomas' Hall
25 Barwon Tce.

To Enquire ring: **0407838256**



holistic health colac

Helping you find permanent relief from chronic physical, mental or emotional conditions



KINESIOLOGY
SPINAL FLOW TECHNIQUE
HYPNOTHERAPY
QUIT SMOKING
REIKI

Karen Wigley

0409 706 727
admin@holistichealthcolac.com.au
www.holistichealthcolac.com.au

Water Delivery

WAZZA'S
WATER CARTAGE

Stainless Tanker Up to 22,000 ltr loads
Barwon Water Registered

Domestic & Rural Water Supplies

Call Wazza
Mob: 0428 877 260

Email: wazza@wazzas.com.au Web: wazzaswater.com

Kyeema
Rural Fencing Pty. Ltd.
Jason Armstrong & Jay Hawker
1080 Prices Lane, Ombertley, Victoria, 3241
0419 565085 (Jason)
0416 585817 (Jay)
kyeemafam@kyeemafam.com.au
Also incorporating domestic and rural tree trimming services.

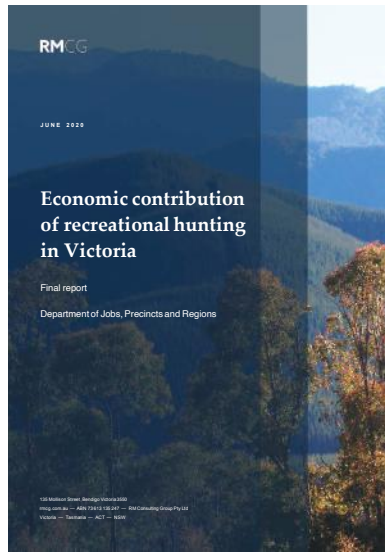
Letter to the Editor

Dear Editor,

I am writing In relation to your unattributed and largely misleading article on Duck Hunting on Tuesday 14th February.

All Australians have the right to go about their private legal business without the tacit approval of the entire population, your assertion is that in order to do anything we need approval of a majority of society. This is not how society works. People need to let people do what they want to do.

Your assertion about economic benefit is totally incorrect. A recent government study I have supplied shows a hunting contributes a gross economic benefit of \$356 Million Dollars, \$65 million from duck hunting and on top of this 3138 full time equivalent jobs, 587 from duck hunting. There are more than 20 regional towns in Victoria where hunting expenditure is above \$2million dollars



annually, this is clearly a large benefit to those towns.

Also your assertion around animal welfare is misleading. Nobody claims that there is no animal suffering. However all efforts are made that it is

absolutely minimised as we all accept in agriculture and our daily lives. Is a duck that lives it's life wild and is then shot worse off than a duck that is fed grain in a shed and then gassed? You may well be against eating meat, in which case what about the birds that have their habitat destroyed and are poisoned and shot in order to grow your food? Sustainable wild harvest is the most ethical food we have and long may it remain so. In future I would like to see less extreme bias and at least have the fortitude to attribute an article.

Regards,
Tony Francis

Editor's note: The article, 'Not all its quacked up to be---the truth about duck hunting', published in the Winchelsea Star on Tuesday 14th February, was in fact sourced from an article of the same name from the RSPCA, of which the attribution was regrettably omitted.

Chief Health Officer Update

COVID-19 Weekly Data

There were 3,344 COVID-19 cases reported in Victoria this week, an increase of 14 per cent on the previous week. The average daily number of new cases this week was 478, up from 420 last week.

The seven-day rolling average of patients with COVID in Victorian hospitals is 106. There are currently 104 COVID patients in Victorian hospitals, with 7 patients in intensive care, including 2 cleared cases. There are 4 COVID patients on a ventilator.

Of Victorians aged 50 to 64 years, 80.1 per cent have had their third dose and 32.6 per cent have had their recommended fourth dose. Of those

aged over 65, 90.9 per cent have had their third dose and 68.7 per cent have had their fourth dose. 70.6 per cent of people aged 16 and over have had three doses.

A total of 56 COVID-related deaths were reported to the Department in the past week. This represents a 69 per cent decrease when compared to the same period the previous month.

The total number of reported COVID-related deaths in Victoria since the pandemic began is 7,286.

Advice for COVID-19 boosters

From February 20, all Victorians who have not had a Covid vaccination or confirmed infection in the past six months will be eligible for a booster. This is irrespective of how many prior doses a person has received.

The national eligibility change follows advice from the Australian Technical Advisory Group on Immunisation.

For those not infected or vaccinated in the past six months, a 2023 booster is recommended for:

- All adults aged 65 years and over
- Adults 18-64 years who have medical comorbidities or disability with significant or complex health needs
- For those not infected or vaccinated in the past six months, a 2023 booster should be considered for:
- Adults 18-64 with no risk factors for severe Covid
- Children and adolescents aged 5-17 who have medical comorbidities or disability with significant or complex health needs

DAVIC AG

CONTRACTING AND EARTHMOVING

For all your harvesting needs

Mowing, raking, round bailing, paddock prepping, spreading and sowing

Call Dave on **0417 579 973** Bambra

52672192 R & K Creative Framing
for all your framing needs

free quotes
pension discount
specialist in Age &
Disability Modifications

Ray & Kim Jansen
10 Witcombe st
Winchelsea 3241

Ray The Home
Maintenance HANDYMAN
abn 47928623462

0414672192



MRP Steelworx
 Matthew Partridge
 p 0418 672 334
 e mrpsteelworx@yahoo.com.au

Welding Service

- Onsite welding
- Farm maintenance
- Farm machinery & equipment repairs
- Cattle & sheep yards
- Custom built trailers
- Supply & install gates

NO MATTER WHAT YOUR PROBLEM, DODDS ELECTRIX CAN DEFUSE THE SITUATION.

RURAL, INDUSTRIAL, COMMERCIAL. DOMESTIC
 PHONE 0438 887 360
 EMAIL: DODDSY@FASTMAIL.FM
 PO BOX 36 BIRREGURRA, VICTORIA 324
 REC: 17520 ABN: 64 581 250 880



5234 6585 0417 385 984
 For all your domestic & stock water.
 Also available for road and civil construction
 Local owned and operated.

OZ TREES NURSERY & TREE PLANTING SERVICES

- Affordable seedlings—over 200 species
- Complete plantation service—farm forestry, shelter, aesthetics
- Deep ripping & mound ploughing. Rotary bed forming
- Our experienced staff will help you select species for your site conditions and needs

Also available—tree planting tools, milk cartons, plastic tree guards & bamboo stakes

569 Warrowie Rd. Colac
 P: 5233 6280 F: 5233 6393
 E: info@oztrees.com.au
 W: www.oztrees.com.au
 Open Monday—Friday
 9am—4:30pm



Phone OzTrees for professional advice,

TRENCHES & HOLES PTY LTD.



PHILLIP ROBERTSON
 ☎ 0427 672 945
WINCHELSEA

- General Earth Works
- Driveways
- Trencher
- Kanga Loader
- Grader
- Excavator Work (3.5 & 6.5 Tonne)
- Tip Truck
- Rock Breaker
- Post Holes & Shed Footings

A.B.N 74006896898



WINCH WEBSITES
 WEB SOLUTIONS SIMPLIFIED.

WEBSITES

GROW business INCREASE reach SAVE time



Find out what a website could do for you
winchwebsites.com.au
 04 887766 20

CONCRETER
 Alister Aitken

No job to big or small

- Driveways - Carports - Crossovers - Footpaths - Sheds Slabs - Colored Concrete - Concrete sealing - Exposed Aggregate - & more -

Call or text for a no obligation free quote

Servicing our local Winchelsea & Surrounding Areas

alaitken.aa@gmail.com or Alister - 0411 871 950

A.B.N 47 228 574 460



St Vincent de Paul Society
good works

Covering Meredith, Bannockburn, Anakie, Lethbridge, Inverleigh, Teesdale, Shelford, Elaine and Winchelsea

52219170

Monday - Friday 9am to 2 pm
<http://www.vinnies.org.au>

A caring Catholic organisation offering “a hand up” to all people in need.



Winchelsea Community House and Shire Hall

Hours: Monday – Friday, 9.00am - 2.00pm

Address: 28 Hesse Street, Winchelsea

Phone: 5267 2028

www.winchhouse.org.au

Email: reception@winchhouse.org.au

Term 1 2023

Mini Movers Program

Wednesday afternoons 1pm to 1.45pm

Winchelsea Shire Hall Space

Suitable for 3-6 year olds

\$90 for six week program

Dates: 1/3, 8/3, 15/3, 22/3, 29/3 and 5/4

Bookings now open via email to

reception@winchhouse.org.au

WYLD

Youth Group

Friday 3rd March and

Friday 10th March

6pm to 8.30pm

FREE

Food provided

Meet at the Skate Park

Art Classes Creative Drawing

Tuesdays 1pm-3pm

Winchelsea Shire Hall Space

\$55 per class

Term 1, 6 classes \$330

All materials included.

Media: including ink, charcoal, conte, pencils and pastels, technical drawing instructions, relax through an explorative and enjoyable approach.

Suitability: All levels of experience and abilities.

Technically informative, providing skills, individuals progress in preferred direction.

Bookings and enquiries via email to
Hinterlandartschool@gmail.com

PH: 0493 479 447

Experienced Tai Chi

Friday mornings 9.30am-10.30am

Winchelsea Community House Space

\$90 for 9 week term program

Commencing Friday 3rd February, 2023

Bookings now open via email to

reception@winchhouse.org.au

Crochet Group

Alternate Saturday afternoons 1.30pm

Winchelsea Community House Space

\$5 per session

First Aid & CPR Refresher Course

Saturday 25th February, 2023

Winchelsea Shire Hall Space

\$160 Full First Aid (8.30am-3.30pm)

\$65 CPR Refresher (8.30am –11.00am)

Bookings now open via email to

reception@winchhouse.org.au

Music Program

Suitable for 2-4 year olds

2/3, 9/3, 16/3, 23/3, 30/3 and 6/4

Thursday mornings 10am to 10.30am

Winchelsea Shire Hall Space

\$60 for six week program

Bookings now open via email to

reception@winchhouse.org.au

Art Classes Painting

Thursdays 1pm-3pm

from 2 March, 2023

Winchelsea Shire Hall Space

\$65 per class

Term 1, 6 classes \$390

All materials included.

A class that progresses through water-based mediums, to the use of oil paint, with a dual focus on subject matter and materials.

Suitability: All levels of experience and abilities.

Technically informative, providing skills, individuals progress in preferred direction.

Bookings and enquiries via email to
Hinterlandartschool@gmail.com

PH: 0493 479 447

Singing Group

Wednesday afternoons 4.45pm-5.45pm

Winchelsea Shire Hall Space

\$70 for 10 week program

Concession \$50 for 10 week program

Under 16 Free

Bookings now open via email to

reception@winchhouse.org.au

Sound Healing Sessions

Wednesday 15th Feb and

Wednesday 29th March, 2023

7.30pm-8.30pm

Winchelsea Shire Hall Space

\$40 per session

Bookings now open

Please call Vicki on 0400 149 749



Winchelsea Community Facebook pages

What's on in Winchelsea

**FLYERS, LOCAL EVENTS,
SMALL BUSINESS,
PROMOTING WINCHELSEA**

facebook.com/WhatsoninWinchelsea

Winchelsea FREE

FREE ONLY

facebook.com/groups/winchelseafree

Winchelsea Community Information AUSTRALIA

POSITIVE DISCUSSION

facebook.com/
groups/207538644446972

Winchelsea Classifieds 3241

FOR SALE ONLY

facebook.com/
groups/216942861684082

Winchelsea Lost and Found

LOST PETS

facebook.com/
groups/768187693217518

Winchelsea Op Shop

facebook.com/
HospitalAuxiliaryOpShopWinchelsea

Winchelsea Tea Rooms (Community Centre)

facebook.com/WinchelseaTeaRooms

Winchelsea Community House

facebook.com/
winchelseacommunityhouse

Winchelsea Coronavirus Community Support Group

facebook.com/
groups/2676957719207927/

The Green Winchelsea Residents

facebook.com/
groups/515322772623126

Growing Winchelsea Inc

facebook.com/growingwinch

Winchelsea Star

winchelseastar.org.au/step/subscribe/

Winchelsea Movie Club

facebook.com/winchelseamovies

Winchelsea Community Market

facebook.com/
winchelseacommunitymarket

Winchelsea Land and River Care Group

facebook.com/envirowinchelsea/

Upper Barwon Landcare Network

facebook.com/UpperBarwonLandcare

Winchelsea & District Historical Society Inc.

facebook.com/
Winchelseaanddistricthistoricalsociety/

Winchelsea Wildlife Shelter

www.winchelseawildlifeshelter.com/

SCARS - Surf Coast Animal Rescue Service

facebook.com/groups/415211698950674

Winchelsea Gardeners

facebook.com/
groups/779878518703025

Winchelsea & District Historical Society

facebook.com/
Winchelseaanddistricthistoricalsociety/

Winchelsea Repertory Society Inc

facebook.com/winchrep/

Winchelsea Globe Theatre

facebook.com/Winchelsea-Globe-Theatre-164790897641678

Winchelsea Uniting Church

facebook.com/winchelseaunitingchurch

St Thomas' Anglican Church

facebook.com/StThomasWinchelsea

St John the Baptist Catholic Church

facebook.com/pages/Winchelsea-Catholic-Church/101775670163180

Winchelsea Mainly Music

facebook.com/
groups/668500343953191/

Winchelsea Health Club

facebook.com/WinchelseaHealthClub

Winchelsea Playgroup 2019

facebook.com/
groups/551663435367031

Winchelsea Girl Guides

www.guidesvic.org.au/

Winchelsea/Modewarre Scouts

facebook.com/1stModewarreScouts

Winchelsea Fire Brigade

facebook.com/winchelseafirebrigade/

Winchelsea SES

facebook.com/groups/WinchSES

Country Women's Association - CWA Winchelsea Branch

facebook.com/pg/CWAWinchelsea/

Winchelsea Bowls Club

facebook.com/Winchelsea-Bowls-Club-533783333344345/

Winchelsea Blues Cricket Club

facebook.com/groups/8999049476/

Winchelsea Blues FC

facebook.com/WinchelseaFNC/

Mel's Dance Studio

facebook.com/melsdancecentral

Winchelsea Golf Club

facebook.com/winchelseagc/
facebook.com/
groups/1324943804676697

Winchelsea Kyokushin Karate Club

facebook.com/winchelseakyokushin

WYLD Winchelsea Youth Leisure and Drop in

facebook.com/
groups/569737570027065/

Lions Club of Winchelsea

facebook.com/LionsWinchelsea

Winchelsea Probus

10am 1st Mon month at Sen Citz Hall



Do you need Residential Aged Care?

50% off respite fees for February.

Estia Health in Bannockburn, Grovedale and Leopold has current vacancies for both respite and permanent care.

To look any of our lovely homes or for any further questions please call Gabrielle on **0419 336 841**.

Bannockburn, Grovedale and Leopold.



Ash Wednesday Remembered, 40 years on

Survivors reflected on brutal experience and loss alongside community strength and recovery during an event marking the 40th anniversary of the Ash Wednesday bushfires which razed the Surf Coast and Otway ranges.

More than 200 people from across the region attended the Surf Coast Shire Council commemorative event at Aireys Inlet Community Centre.

The inferno torched 41,000 hectares and claimed 729 homes. Mayor Liz Pattison introduced a period of silence in memory and recognition of the three lives lost in the disaster – Ilie Mierla, Lloyd Venables and Colin Barton.



Winchelsea AUTO SERVICES
One stop auto shop
17 Alsop Drive

- ❑ LOG BOOK SERVICE
- ❑ AUTO ELECTRICAL
- ❑ TOWING
- ❑ AIR CONDITIONING
- ❑ CLUTCH & BRAKES
- ❑ TYRES
- ❑ WHEEL ALIGNMENT
- ❑ BATTERIES

CAR, TRUCK REPAIRS & Roadworthys

PH: 5267 3001

Mob: 0417 137 457



MyGolf is Australia's introductory golf program for 5 to 12 year olds.

The program introduces kids to golf in a safe and friendly environment.

Participants learn new skills, make new friends and most importantly, HAVE FUN!

REGISTER NOW AT MYGOLF.ORG.AU

Winchelsea Golf Club
Term 1 5 Week MyGolf Program
Fridays 5pm - 6pm, March 3rd to 31st
Total Cost: \$40
For more information contact Brent Kahle
brentkahle22@yahoo.com.au or 0410 641 460
To register
<https://www.golf.org.au/mygolf/programdetails?programId=24065>





Chiropractic - Remedial Massage - Myotherapy - Sound Healing - Breathwork



Chiropractic care for:

Stress & Anxiety	Pain Management
Body Aches & Tension	Family Wellbeing
Poor Sleep	Health Longevity

03 5267 2240 Shop 4/21 Hesse St Winchelsea   <https://onebodychiropractic.com.au/>




Winchelsea Medical Clinic

Located at 36 Main Street, Winchelsea 3241

For any enquires or bookings please contact the clinic on 5292 8028.
Or visit our website: www.winchmc.com.au

Opening Hours:
Monday - Friday 8:00am - 5.00pm
(Monday Evening Clinics available and selected Saturdays)



Our clinic accepts online bookings via the app called HotDoc. Download the app on the App Store or Google Play or head to our website.



Aquafire Healing
TRANSFORMING YOUR HEALTH THROUGH THE HEALING POWER OF NATURE

**NATUROPATHIC MEDICINE • HERBAL MEDICINE
NUTRITIONAL MEDICINE • HOMOEOPATHY
REMEDIAL MASSAGE**

www.aquafirehealing.com
Ph: 0415 530 276



NATURAL GAS CONNECTIONS

M. & L DRAYTON PLUMBING SERVICES

YOUR LOCAL LICENSED

- PLUMBERS (24356)
- GAS FITTERS
- GAS CONVERTERS
- CARBON MONOXIDE TESTING

MARK 0428 520 142



Moriac Veterinary Clinic
0447 781 089
PHONE 24 HOURS
784 Hendy Main Road Moriac
info@moriacvet.com
www.moriacvetclinic.com.au
HOURS // Monday - Friday: 8am - 5pm



Lupton BUILDERS
SPECIALISING IN QUALITY




REGISTERED Building Practitioner

• NEW HOMES	• EXTENSIONS	• RENOVATIONS
• ALTERATIONS	• DECKS	• PERGOLAS
• GARPORTS	• VERANDAHS	• RE-GLADS
• BATHROOMS	• WINDOW REPLACEMENTS	

LEIGH LUPTON 0438 840 104 | CHRIS LUPTON 0407 681 514

LEIGHLUPTON17@GMAIL.COM Est. 1977



TANGO
Pet Grooming

RONNIE.
Winchelsea's pet groomer.
For appointments
0436 008 989
tangopetgrooming@gmail.com



R.A.K. DAVIS & SONS

CARTAGE CONTRACTORS

WINCHELSEA

**SUPPLIER OF ALL QUARRY MATERIALS, TRUCK HIRE
CARTAGE OF GRAIN, LIME, GYPSUM & SUPER
LANDSCAPE & GARDEN SUPPLIES**

**56 WILLIS ST, WINCHELSEA
Ph – 5267 2094
Ryan – 0438 672 281
Email: rakdavis@bigpond.com**

All your caulking & waterproofing needs

- Bathrooms (tiles, mirrors, vanities, bathtubs, shower)
- Kitchens • Flooring (skirtings, tiles, floorboards)
- Splash Backs • Pool Joints • Brick Work
- Expansion Joints

Phone/Text/Email: luke@westcoastsealants.com

**LUKE BATH
CAULKING CONTRACTOR**

0406 845 098
westcoastsealants.com
PROVIDING QUALITY WORK SINCE 1995

SIMPLE STORAGE SOLUTIONS

- Personal & Business Storage
- Boat, Caravan & Vehicle Storage
- High Security Premises
- Individually Alarmed Units
- Electric Gate Access
- 7 Day Access & CCTV

YOUR STORAGE PROBLEMS SOLVED

5267 3116
6 ALSOP DRIVE, WINCHELSEA 3241

Big on products. Big on service.

And big on local banking

Find out more. Call us on 5267 3189 or search Bendigo Bank Winchelsea & District.

Bendigo Bank

Community Bank
Winchelsea & District

Bendigo and Adelaide Bank Limited ABN 11 068 049 178, AFSL/Australian Credit Licence 237879 A1455027 OUT_25157106, 18/08/2022



Draft Tree Risk Mangement Plan

Council has reviewed and updated its **Draft Tree Risk Management Plan**.



DID YOU KNOW?

Council has a Tree Risk Management Plan

The Tree Risk Management Plan outlines how we inspect, identify and evaluate the health, condition and defects that may contribute to the loss of structural integrity in trees. We then program and undertake maintenance works for those trees.

For more information go to surfcoast.vic.gov.au/TreeRisk



M & L DRAYTON PLUMBING SERVICES

REG No 24356 C/A No C02594

- Domestic and Rural Plumbing
- Roofing
- Sewerage & Septic
- LPG & Natural Gas Connections
- Motorised Drain Cleaning
- Backhoe Hire

Phone Mark 5288 7244
PO BOX 98 WINCHELSEA 3241
Mobile 0428 520 142

Commercial | Industrial | Domestic

HAMILTONS Truck & Bobcat Hire Give Aaron a Call **0438 438 623**



5234 6585 0417 385 984
 For all your septic tank, grease traps
 and interceptor pits servicing.
 Locally owned and operated

Winchelsea Taxis is now Surfcoast Taxis

Our fleet of vehicles are growing to all late models and we are covering an extended area including Winchelsea, Colac, Bannockburn, Inverleigh, Great Ocean Road and Geelong.

We have a fleet of 10 seater Maxi Vans, all with capacity to carry wheelchairs.

Surfcoast Taxis Pty Ltd
All Bookings: 0408 325 992
Fax: 5267 2699
Email: bannotaxis@gmail.com
 (Admin or Stan 0429 672 888)
 66A Batson Street
 Winchelsea 3241



Book your next ride with **smarHAIL**

Book Track Pay Rate

Download on the App Store GET IT ON Google Play

Accounts NDIS provider. TAC, DVA etc

NDIS provider number 4050001044
 NDIS provider number 4050001048

Wightons Lawyers

Dispute Resolution & Litigation
 Debt Collection
 Property Law
 Wills & Estates
 Powers of Attorney
 Business Law
 Family Law

By appointment only

22 Willis Street, Winchelsea
 ph. 5221 8777

www.wightons.com.au




Volunteers Required

- Bus Driver & Outings Assistant
- Resident Visitor
- Events and Activities Assistant
- Group Wheelchair Walks Assistant
- Appointments Escort
- Social Support Activities
- Gardening - Winchelsea

Volunteers are essential to our aged care system, supporting the wellbeing of older people in their homes and in residential settings



For more information please contact Jessica Culhane, Communications and Community Partnership Officer via phone on [03152671200](tel:03152671200) or via email jculhane@hesse.vic.gov.au

Funeral Planning

Working out what is best for you.
Prepaid Funerals, Funeral Bonds, Pay-by instalments...

There are many options and its important to make the right choice.



Alyson Burchell will be available by appointment to answer any questions about funerals and planning ahead.

For more information or to make an appointment contact Sue on 5221 4788

Tuckers Community Office,
Surf Coast Taxation Services, 22 Willis Street,
Winchelsea

**First Tuesday of the Month,
by appointment 10.00am - 12.00pm**

Caring for families since 1883



5221 4788
www.tuckers.com.au

Preparing tomorrow's students today.

→ www.journey.edu.au






Winchelsea Towing
24 Hour Accident and Breakdown Towing
0418 535 402



ISSN 2202-6851



HF RICHARDSON

PROPERTY

Servicing all your real estate needs

Ken McDonald **0418 524 150**



Residential | Rural Lifestyle | Agricultural Farms



Charles Stewart & Company are leading livestock and real estate service providers covering Victoria's south west

	LIVESTOCK
Jamie McConachy	0418 522879
Peter McConachy	0408 522878
Matt Nelson	0428 315400
Gerard Bohan	0400 005541
Lachie Barclay	0438 346291
John Thornton	0408 526367
Dougal McIntyre	0439 575612
Ross Spitty	0419 539717



	REAL ESTATE
Michael Stewart	0418 520467
Daryl Osborne	0419 388341
Anthony McDonald	0418 593597
Gerard Bohan	0400 005541
Stephen Lugg	0417 556098
Josh Lamanna	0417 586032



Office
 56 Bromfield Street, Colac
www.charlesstewart.com.au

Green Lead Electrical
 Connecting you to a greener future
REC 23618

0467 097 101



Servicing Geelong & the Surf Coast

Specialising in all residential electrical work including:

- Switch board & lighting upgrades
- Outdoor lighting
- Electrical safety checks
- Energy efficient LED lighting
- Ceiling sweep fans & ventilation
- Energy saving advice

Phone **Martin Wilkinson:**
0467 097 101

greenlead@outlook.com

132268-CG18-14

MGT BUILDING & CONSTRUCTION

NEW HOMES | EXTENSIONS | RENOVATIONS

Ph: 0409 433 687

