



# READY FOR THE REAL WORLD?



**THE  
OUTDOOR  
EDUCATION  
GROUP**



association for  
experiential education



# OUR STORY

The Outdoor Education Group (OEG) is an independent for-purpose not-for-profit organisation that provides outdoor experiences for more than 48,000 participants per year. Founded in 1984, with a history spanning over 40 years and with more than 300 staff working across the country, we are Australia's most established outdoor education provider.

We believe all young people deserve to be equipped with the skills they need to make a positive impact in society. We use the natural world to enrich student learning and strengthen essential capabilities such as leadership, resilience, self-belief, communication, social cohesion, and critical and creative thinking.

We are experts in taking learning beyond the classroom and inspiring the development of a range of skills and understandings, allowing your students to explore their potential and face life's obstacles with confidence and strength.





# OUR PURPOSE

To create positive change in the lives of young people through outdoor education.

# OUR VALUES

## CARING

Respect others, yourself and the environment.

## CONNECTED

Create community through building meaningful relationships.

## COURAGEOUS

Trust the strength within you.

## RESPONSIBLE

Act with integrity and consideration.

# WHY PARTNER WITH US



## EMPOWER YOUNG PEOPLE TO THRIVE

Immersion in the outdoors builds core skills for their future.



## STRENGTHEN CURRICULUM IMPACT

Our commitment to outcomes enhances your curriculum.



## SCALE YOUR EXPERIENCE

Our national footprint and scale support 48,000+ students each year.



## REDUCE RISK

Your students are in experienced hands with our extensive risk management.



## DELIVER OUTCOMES WITH EASE

Our trusted and end-to-end processes allow for a superior student experience.

# WHAT WE OFFER



## **CAMPS | 3-5 Days (Standard)**

We guide students through adventure activities, thrilling challenges and exploration at our hardtop camps.



## **INTRODUCTION TO JOURNEYS | 3-5 Days (Standard)**

These programs incorporate base-camp and journey components to enable students to extend themselves with full support.



## **JOURNEYS | 3-5 Days (Standard)**

Journeys focus on experiential learning through adventure activities, camping and community living throughout Australia.



## **EXPEDITIONS | 10-30 Days (Standard)**

Expeditions form the peak experience of a robust outdoor education sequence and are uniquely created in partnership with your school.



## **THE DUKE OF EDINBURGH'S INTERNATIONAL AWARD AUSTRALIA**

Working to the requirements of the Award and under the guidance of qualified instructors, we can assist with Bronze, Silver and Gold Practice Journey and/or Qualifying Journey.

# KEY LOCATIONS

Programs can be delivered in various locations, including but not limited to:

## **VICTORIA**

Camp Marysville | Camp Jungai | Eildon Region | Wilsons Promontory National Park | Mornington Peninsula | Grampians National Park | Murray River | Waratah Bay | Arapiles | Hattah | Alpine National Park | Mt Stirling | Mitchell River | Glenelg River | North East Rail Trail | Local Parks & Nature Reserves.

## **NEW SOUTH WALES & AUSTRALIAN CAPITAL TERRITORY**

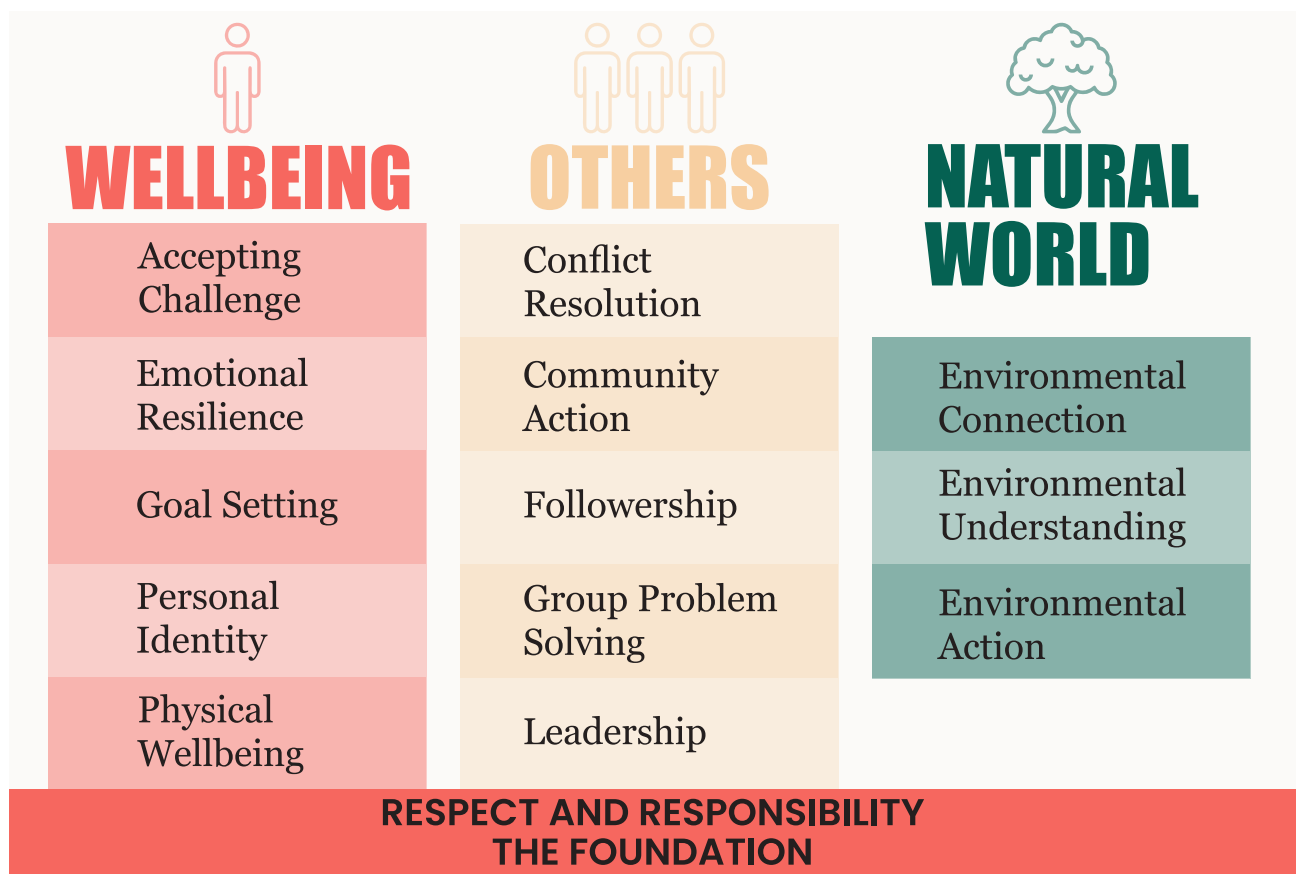
Camp Wombaroo | Bush Camp Biluela | Kangaroo Valley | Cooleman Plains | Great North Walk | Hawkesbury River | Kosciuszko National Park | Myall Lakes | Canberra | Murrumbidgee National Park | North Coast | Local Parks & Nature Reserves.

## **WESTERN AUSTRALIA**

Nanga Bush Camp | Manjedal Scout Camp | Bush Camp Margaret River | Yanchep National Park | Margaret River Region (Leeuwin Naturaliste/ Cape To Cape Trek) | Wellington Dam | Ninghan Station | Bibbulmun Track | Local Parks & Nature Reserves.

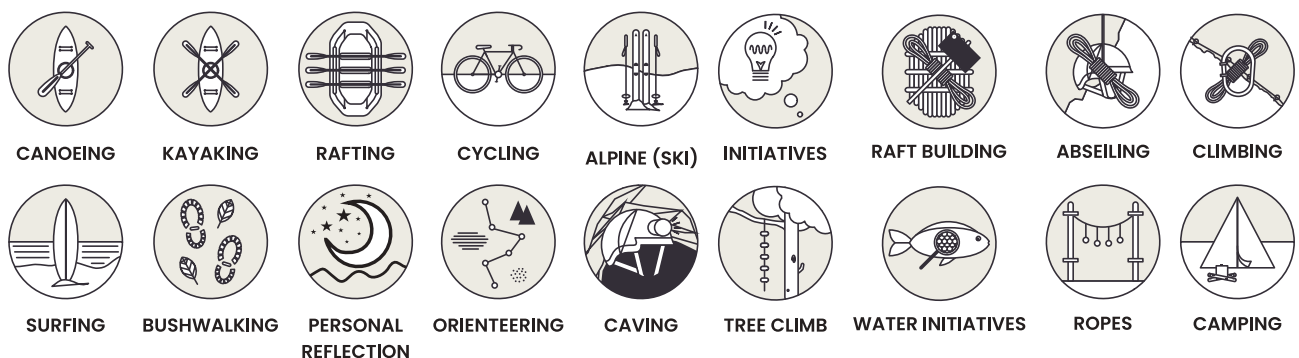
# EDUCATION FRAMEWORK

OEG's education framework is based on the core values of respect and responsibility. The framework is structured around three key pillars of learning; individual wellbeing, fostering connections with others, and developing a deep appreciation and care for the natural world. These elements, which form the cornerstone of our educational approach, are designed to cultivate well-rounded individuals who are mindful of their surroundings and interactions:



## EXAMPLE ACTIVITIES

Our outdoor activities support your curriculum and teaching framework to deliver social, physical and psychological outcomes:







# CHILD SAFETY

Child safety is The Outdoor Education Group's top priority. We are committed to maintaining the highest standards of conduct and professionalism, ensuring that we have in place the relevant standards and policies relating to child safety, including a specific Code of Conduct. All of our team hold a current satisfactory Working with Children Check relevant to the state in which they are working.

# RISK MANAGEMENT

As leaders in outdoor education, risk management is at the heart of everything that we do at The Outdoor Education Group; before, during and after program. A continual focus on risk management procedures and research results in all programs having robust strategies and systems in place to ensure, as far as reasonably practicable, the safety of all; staff, participants, and others who are associated with our programs.

Our standards align with Australian Adventure Activity Standards (AAAS), and we are the first Australian organisation to receive accreditation with the Association of Experiential Education. This reflects 40 years of industry leading experience.

A dedicated Risk, Safety and Compliance department is responsible for researching best practices from around the world, tracking and reviewing incidents, informing training, updating policies and maintaining our Administrative Practices and Field Practices Manuals, that define our operating guidelines and standards.

We take a systems-based approach to managing risk and work to embed best practices at every step of program preparation, delivery, and review. For each specific program, there are detailed components of both our proactive and reactive strategies.

The components of The Outdoor Education Group's Risk Management strategies are:

- ▲ Communication & Consultation
- ▲ Risk Evaluation & Treatment
- ▲ Establishing Context
- ▲ Monitoring & Review
- ▲ Risk Identification & Analysis
- ▲ Training

# SUPPORT



## PROGRAM INCLUSIONS

The Outdoor Education Group programs encompass a comprehensive range of services. This includes the OEG program team, provision of food for both staff and students, all camping and activity equipment for students\*, accommodation, coverage of camping, parks and landowner fees, and transportation costs for team, vehicles, trailers and fuel.

For Journeys clients, dedicated support is provided in the form of a Client Relationship Manager and Program Coordinator, who offer assistance throughout the program and conduct briefing sessions for students, staff and parents.

*\*except sleeping bags and personal gear*





## **JOINT SUPERVISION PLANS**

Our group leaders co-create a facilitation team with your staff, combining their own areas of skill and experience with your teachers and support staff to maximise the benefits for students. This co-creation results in a Joint Supervision Plan outlining how your staff and our group leaders will support each other and promote adequate rest and recovery for team members to ensure they can sustainably fulfil their roles in the field.



## **SCHOOL PORTAL**

The Outdoor Education Group provides a central communication platform for your staff, students and parent body. This password-protected School Portal presents customised information regarding your school's outdoor education program, providing parents and students with up-to-date information and documents.



## **ONE PLANET PARTNERSHIP (GEAR & EQUIPMENT)**

The innovation that One Planet has brought to the outdoor industry has extended to Camplist; an online store that provides suitable, affordable and high-quality gear for school outdoor education programs at discounted prices.



## **OUTDOOR EDUCATION FOUNDATION**

We have created The Outdoor Education Foundation to provide high-quality outdoor education programs to young people impacted by disadvantage so they can build resilience and learn skills to tackle both the ordinary and extraordinary challenges of life.



# WHERE TO NOW?

To start your next outdoor adventure  
and for further information, please contact:

OEG Enquiries  
[enquiries@oeg.edu.au](mailto:enquiries@oeg.edu.au)  
1800 880 900