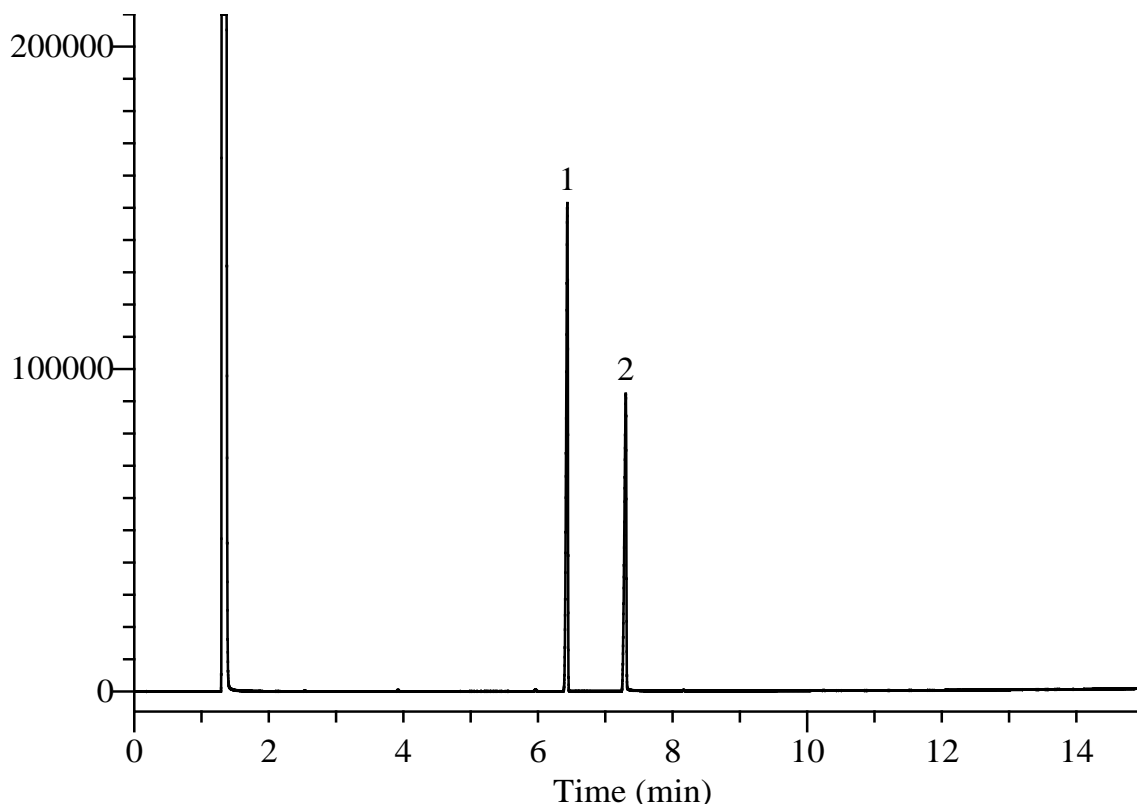


# InertSearch™ for GC

InertCap® Applications

## $\beta$ -Thujaplicin by Japanese Standards of Food Additives

Data No. GA194-0591



### Conditions

**System** : GC/FID  
**Column** : InertCap 1  
0.25 mm I.D. x 30 m df = 0.25  $\mu$ m  
**Col. Cat. No.** : 1010-11142  
**Col. Temp.** : 100 °C - 10 °C/min - 250 °C  
**Carrier Gas** : He 160 kPa  
**Injection** : Split flow 27 mL/min  
250 °C  
**Detection** : FID Range 10<sup>1</sup>  
270 °C  
**Sample Size** : 2000  $\mu$ g/mL in Ethanol  
0.5  $\mu$ L

### Analyte

1. Diphenyl ether  
2.  $\beta$ -Thujaplicin