

GET SMART

# THE CONNECTED SHOP



**SMART MOTION DETECTOR  
USER MANUAL**

Welcome to the Smart Motion Detector User Manual. Your easy, step-by-step guide to set up and connect your Smart Motion Detector. The device is designed to be easy-to-use and to replace all motion detectors with this modern smart motion detector.



# SUMMARY

---

## I. Device Set Up



- 1. Set-up Guide
  - a) Set-up Video

## II. Initialization



- 2. Initial State of your device
  - a) Manage Device

## III. Mobile App Connection



- 3. Registering on the Mobile App
  - a) Downloading the Mobile App
  - b) Adding Devices

## PACKAGING DETAILS



1 Smart Motion Detector

3 Cable (optional)

2 Adhesive Tape or Screws

## STEP-BY-STEP SET-UP GUIDE

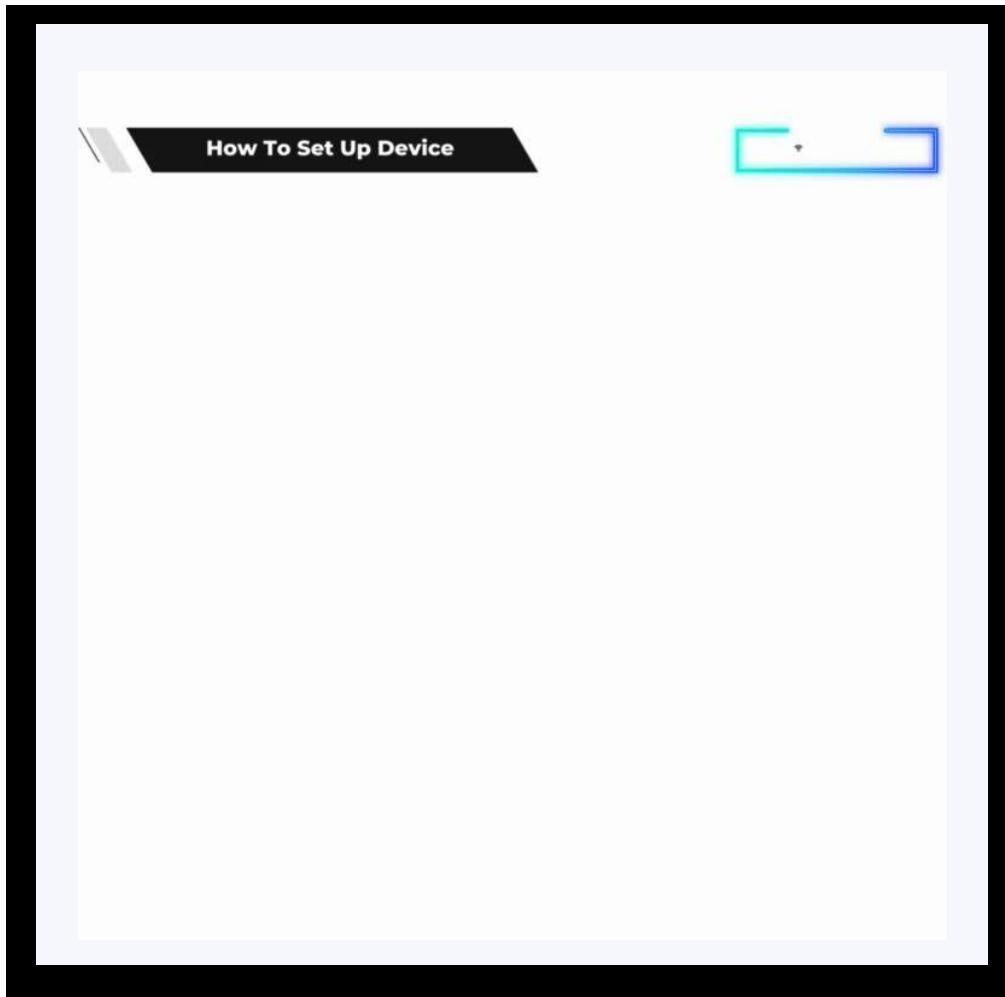
---



## 1. SET UP



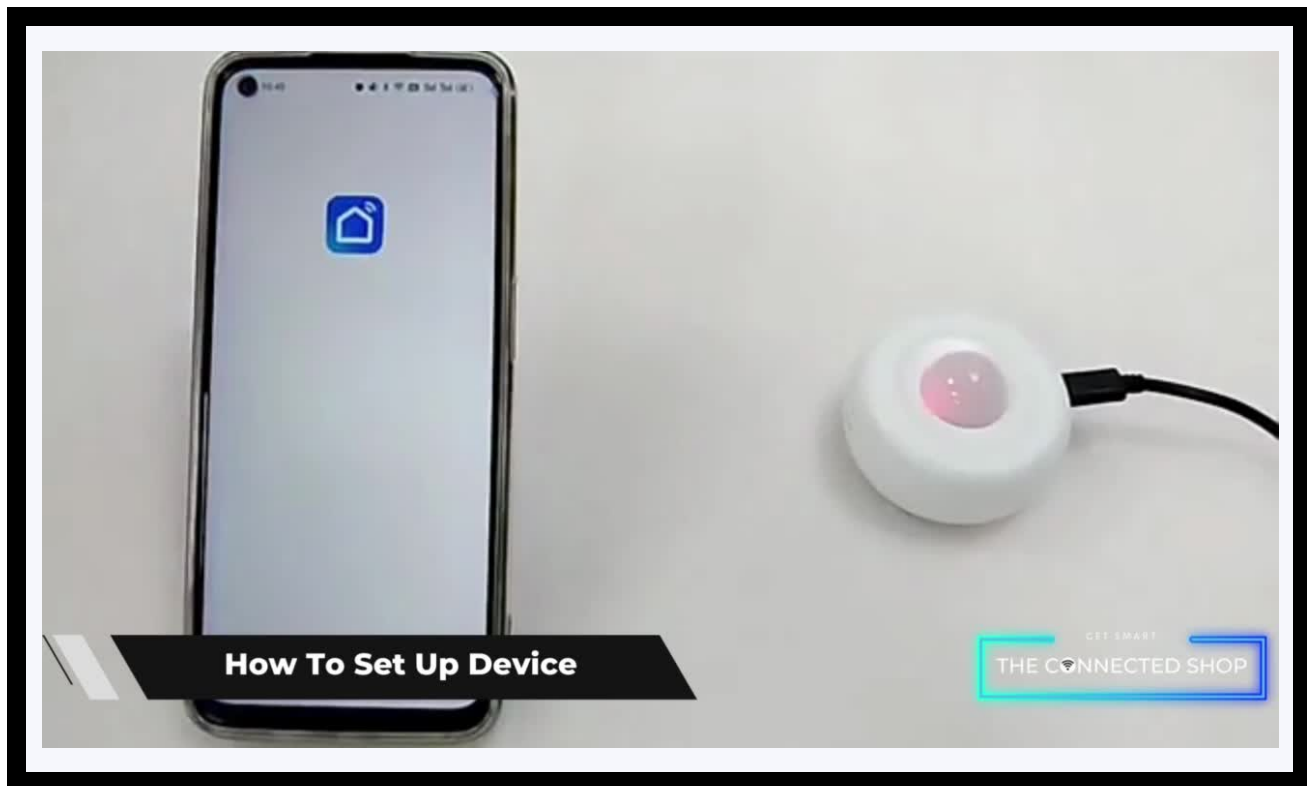
- a. Remove all items from its original box
- b. Plug in the power cable
- c. Make sure to keep the device plugged in while in use
- d. Afterwards, place the device on a flat surface (e.g., wall) and long-press the power button to activate the device
- e. You can now follow the following videos and steps on how to properly pair your device with the mobile app



## 2. INITIAL STATE OF YOUR DEVICE



- a. Remove all items from its original box
- b. Either plug in the power cable or insert new batteries into the device
- c. Afterwards, place the device on a flat surface (e.g., ceiling) and long-press the reset button to activate the device using a pin
- d. You can now follow the following videos and steps on how to properly pair your device with the mobile app



### 3. MOBILE APP CONNECTION



#### a) Downloading the App

Download the application on the Google Play Store or Apple AppStore by searching “Tuya Smart” or by scanning the QR code below



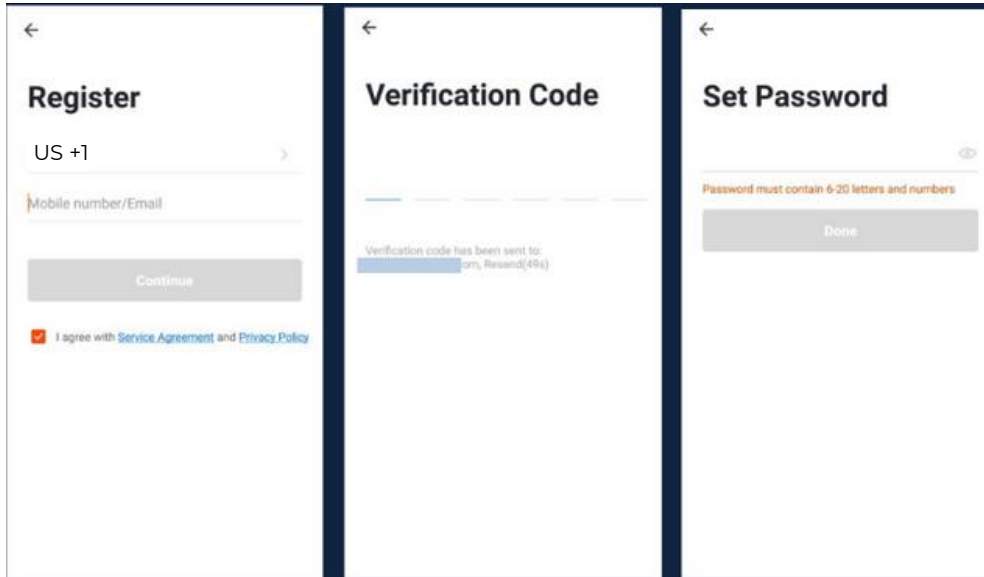
#### b) Logging in and Registering

##### After Downloading the App

- Select the country from which you will be using the device, usually the app will prompt it automatically
- You will be redirected to register via email where a verification code will be sent and proceed to enter it on the app in the allotted time limit
- Once the verification code has been entered into the app, you will be asked to set your password
- You will then have full access to the Tuya Smart Platform



### 3. MOBILE APP CONNECTION

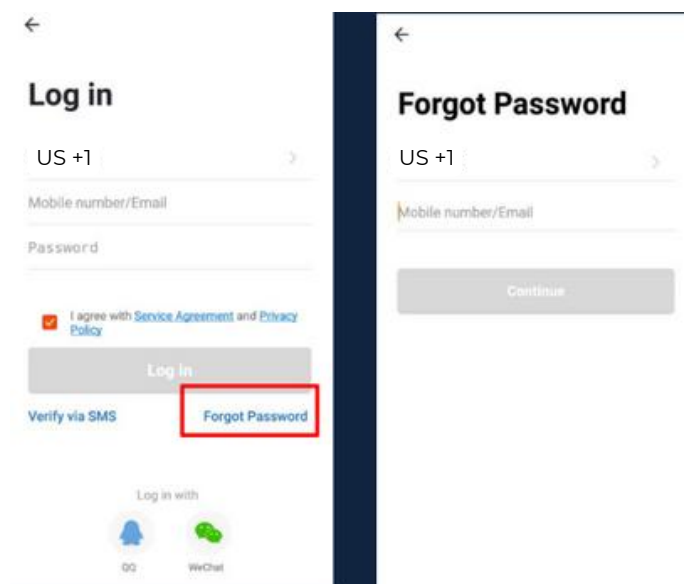


Should you be an existing user to the Tuya Smart Platform, log in using your email and password from the login page.

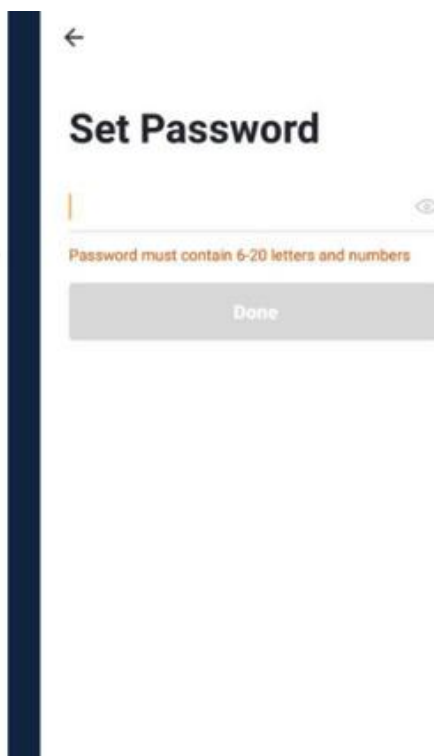
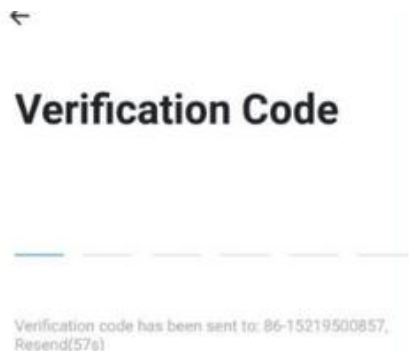
#### c) Resetting your Password

In case you have forgotten your password and need to reset it, please follow the steps below:

- On the Login Page, when prompted for your email & password, click “Forgot Password” button located below the “Login” button
- Select the country from which you will be using the device, usually the app will prompt it automatically



### 3. MOBILE APP CONNECTION



- You will be prompted to enter the email where a verification code will be sent and proceed to enter it on the app in the allotted time limit
- Once the verification code has been entered into the app, you will be asked to set your new password
- You will then have full access to the Tuya Smart Platform

In the case that you would like to change your password from the app, please follow the steps below:

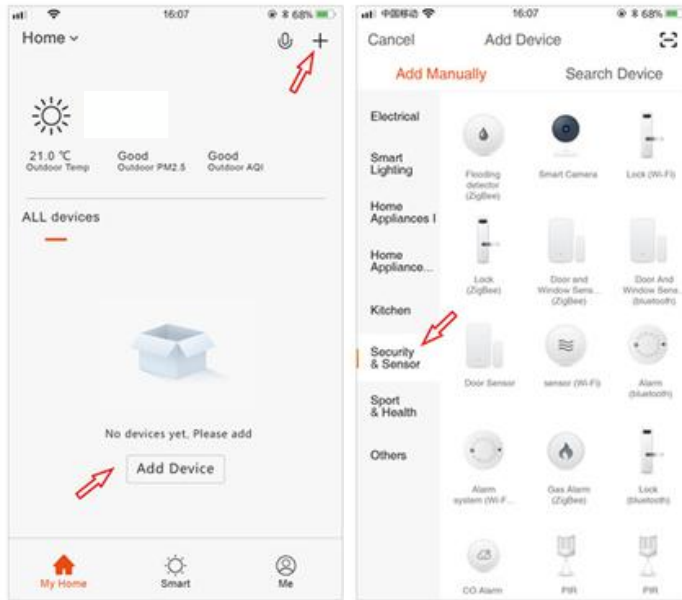
- Tap the 'Me' tab on the bottom right hand corner of your screen
- Click 'Change Login Password'
- You will be taken to the 'Account Verification' page and then tap 'Get Verification Code' button
- This will send a verification to your registered email
- Enter the code in the app
- Proceed to enter the new password

### 3. MOBILE APP CONNECTION



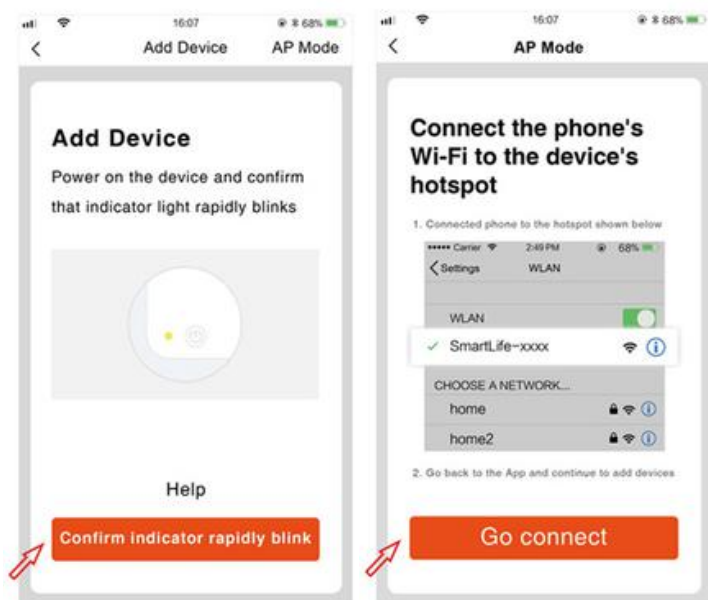
#### d) Adding Devices

To add devices on the app, please follow the instructions below. Your devices and phone must be connected to the same Wi-Fi network in order for this to work.

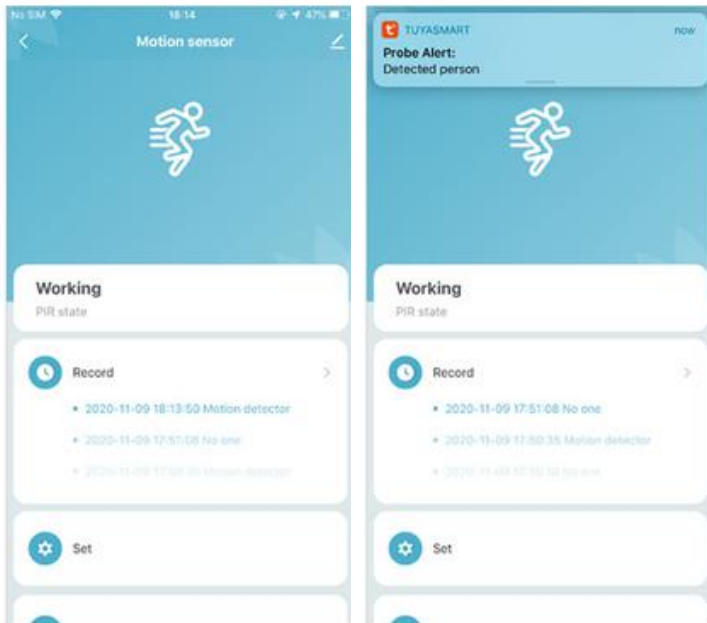


- To add a device, click the 'Add Device' or tap the 'Plus' button on the top-right corner of your screen and select 'Add Device'

- Make sure to turn on the device by pressing the power button and keeping your mobile phone in close proximity

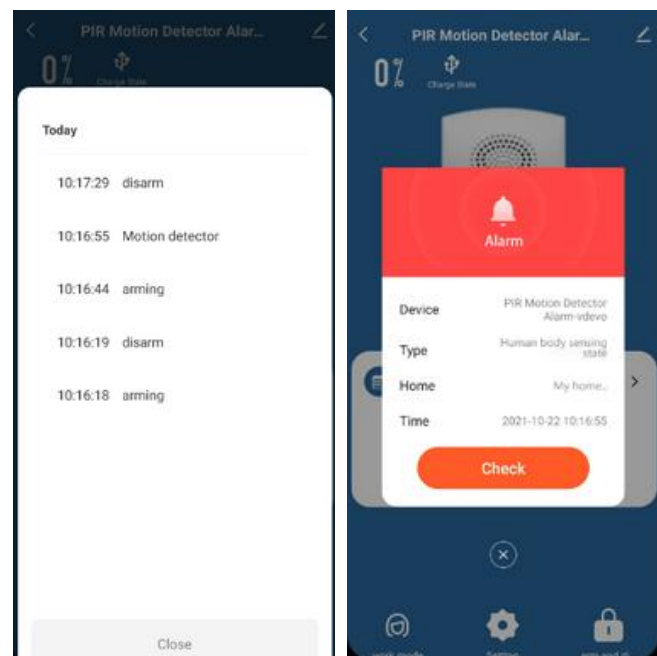


### 3. MOBILE APP CONNECTION



- Wait for the app to finish searching for the device until a successful message pops up.

- Finish adding your device. Once this has been done successfully, you can go on to change the name of your device and control its functions.



## Congratulations!

You have successfully set up your very own Smart Motion Detector.  
Thank you for being a valued customer of The Connected Shop.

[www.theconnectedshop.com](http://www.theconnectedshop.com)





# THE CONNECTED SHOP