



MURDER

AT

WESTCOTT MANOR

BONUS PACK

All of the following pages contain optional content. Feel free to print these out to enhance your murder mystery experience, or just skip them!

amazing

SEATING CARDS

Cut along the dotted lines and fold along the solid lines. Use these to assign seating at your murder mystery dinner!

Lily Westcott
(Mayor Westcott's
daughter)

Dr Fairweather
(the town doctor)

Butler John Johnson
(the
Westcott's butler)

Mrs. Dee Westcott
(Mayor Westcott's
wife)

Paula Puffleworth (the town reporter)	Slade O'Slick (shady businessman)
Roy Charms (Deputy Mayor)	Freddy Sharp (Skye Sharp's son)
Skye Sharp (The Mayor's political opponent)	Marjorie Jones (Lily Westcott's best friend)

MENU SUGGESTIONS

Feel free to use the following menu suggestions as a guide, or follow them exactly and print out the menus to post in the party space.





COCKTAIL MENU



OLD FASHIONED

2 ounces of bourbon
2 dashes Angostura bitters
1 sugar cube
club soda



CIN FIZZ

2 ounces gin
1 ounce lemon juice
3/4 ounce simple syrup
1 egg white
1 ounce club soda



SIDECAR

1 1/2 ounces cognac
3/4 ounce orange liqueur
3/4 ounce lemon juice
orange twist



amazing6





FOOD MENU



CANAPES

Shrimp Cocktail

Finger Sandwiches

Mini Quiches

Stuffed Mushrooms

Artichoke Hearts



DESSERTS

Chocolate Truffles

Pineapple Upside Down Cake

Fruit Parfait

Chocolate Dipped Strawberries

Tiramisu



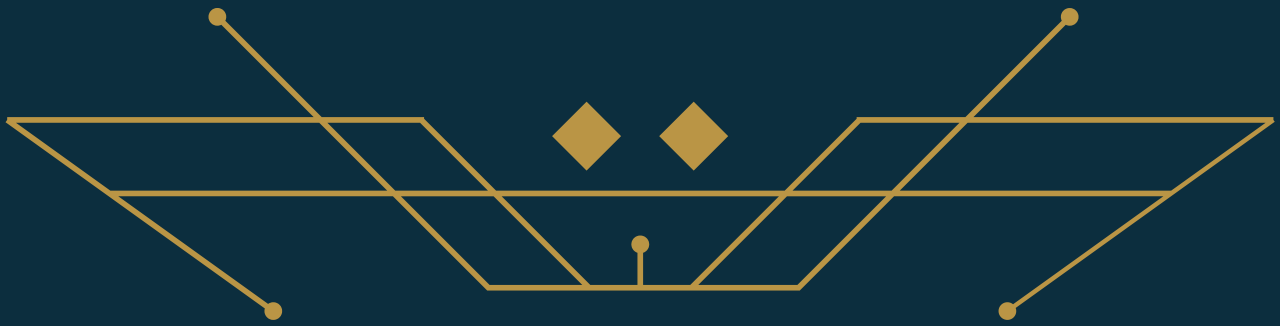
amazing



EXTRA DECOR

Use the next few pages to set the scene! Decorate your space to really get your guests in the mood to solve a murder!





1920's Slang

Top marks for anyone using 1920's language during your Murder Mystery!



Dewdropper - a lazy person

Giggle water - alcohol, liquor


Dolled up - dressed up

Egg - rich person

Heebie jeebies - a spooky feeling

Ossified - someone who is drunk

Bee's knees - an extraordinary person/thing/idea



Cat's Pyjamas - same as Bees Knees!

Heavy sugar - a lot of money



Cut down - killed



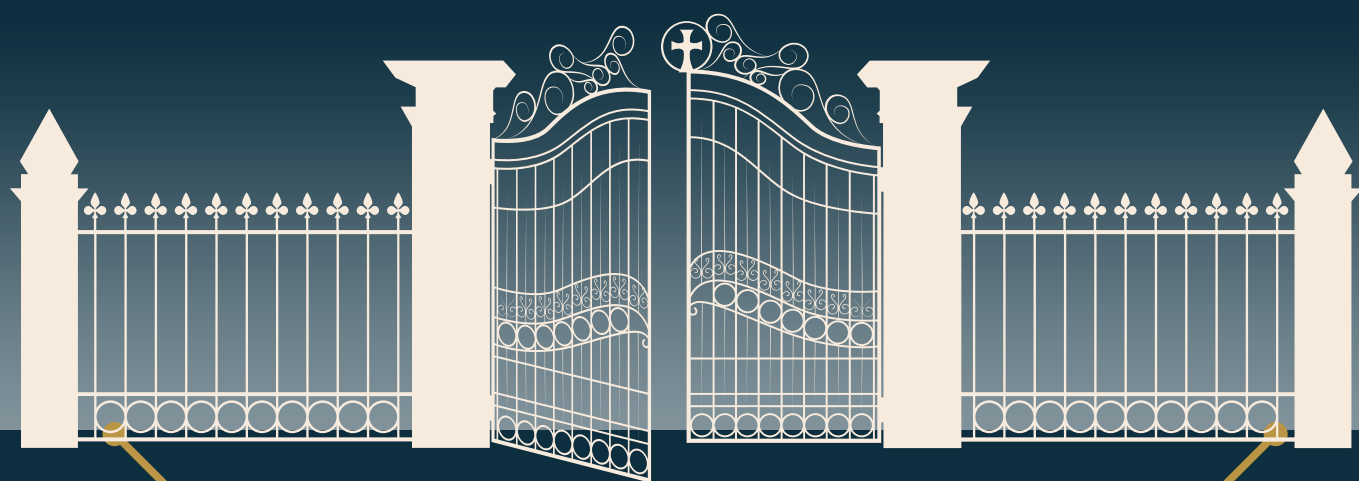
amazing

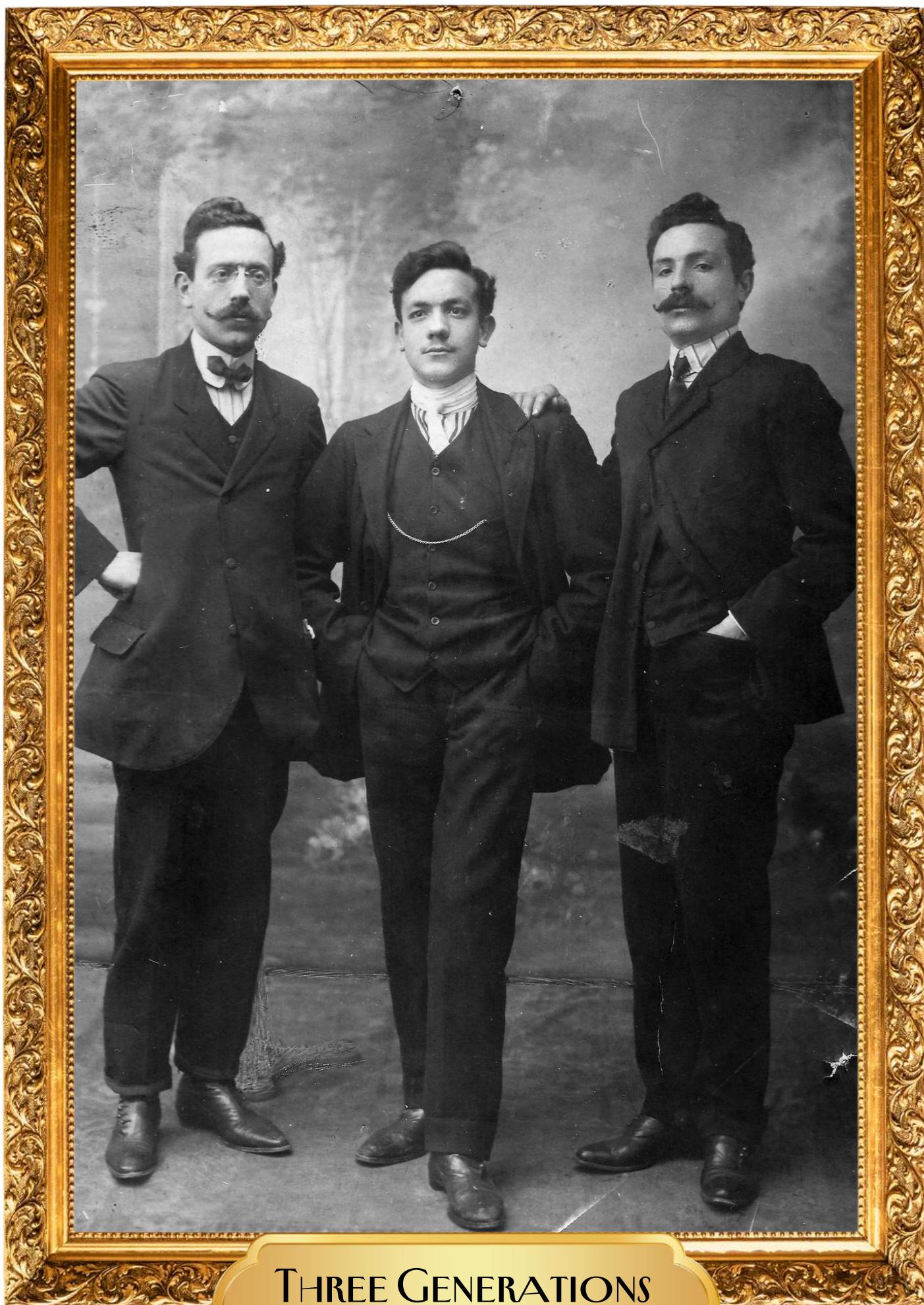


WELCOME

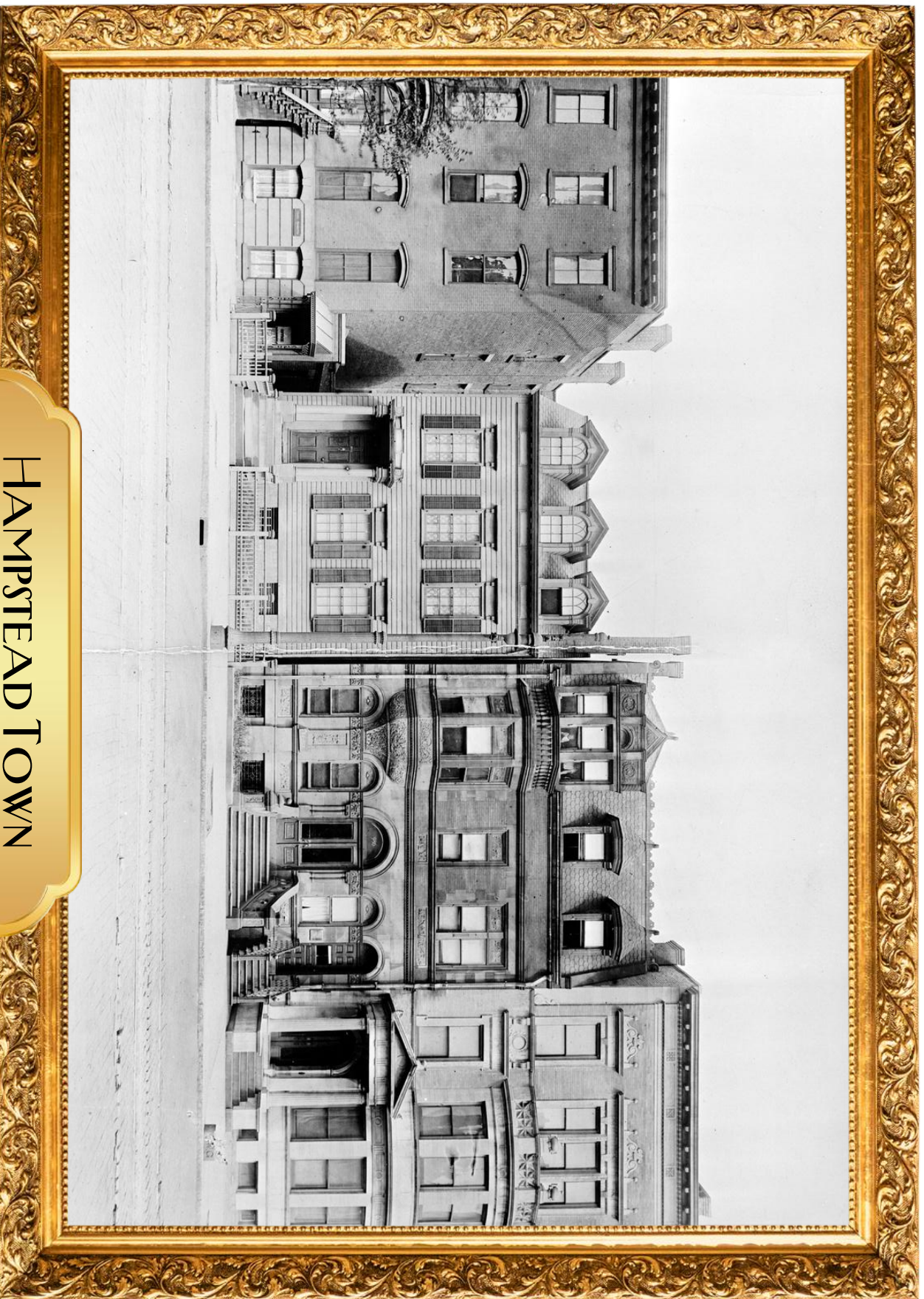
TO

WESTCOTT
MANOR





THREE GENERATIONS
OF MAYORS



HAMPSTEAD TOWN
1920